



FA01623M4A Interphone Mains Libres Came Instruction Manual

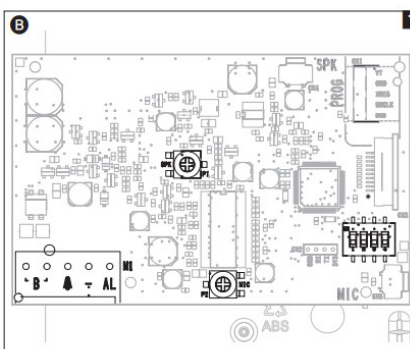
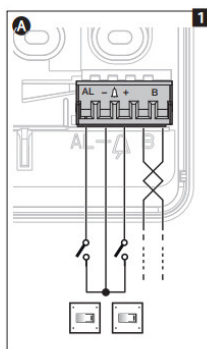
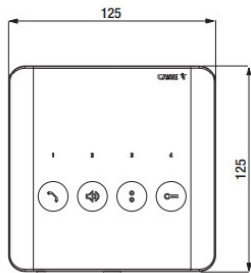
[Home](#) » [CAME](#) » FA01623M4A Interphone Mains Libres Came Instruction Manual 



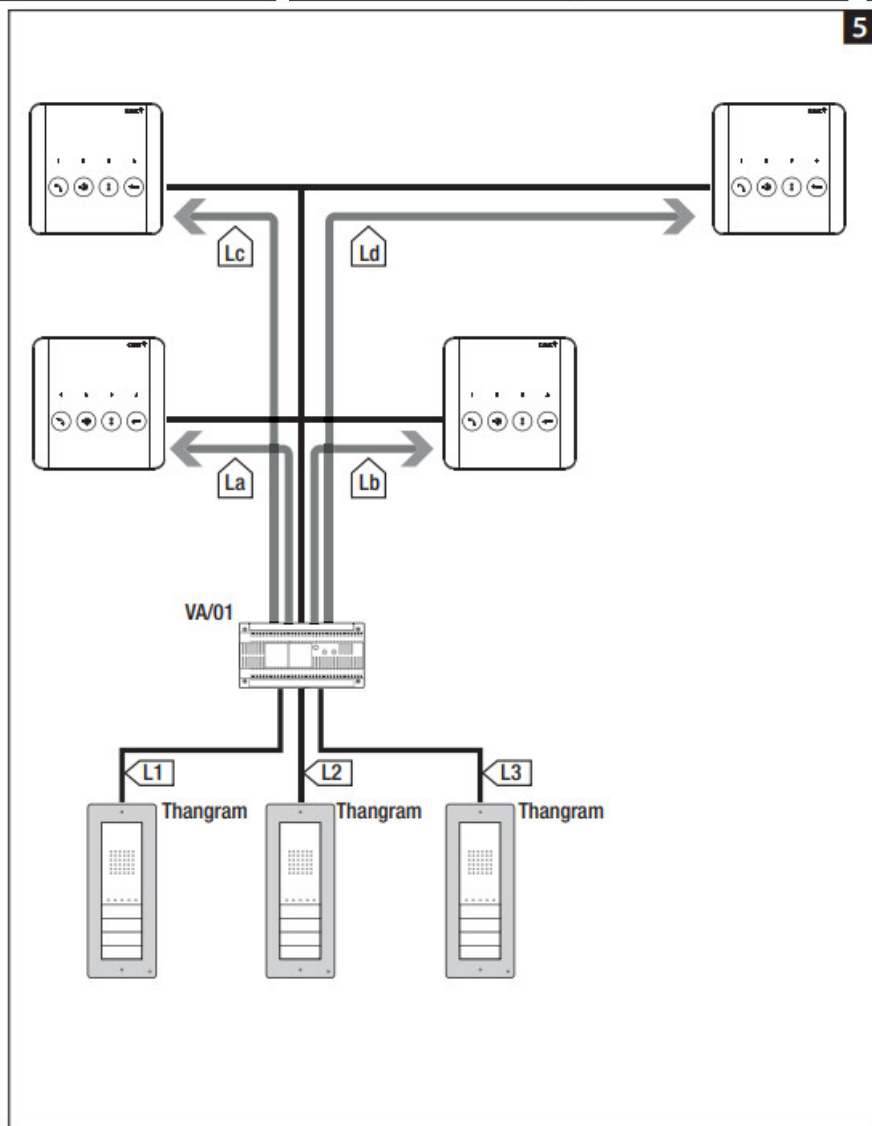
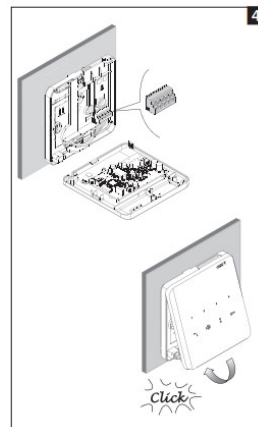
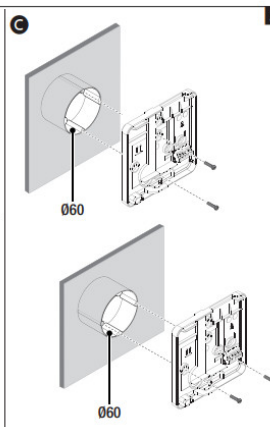
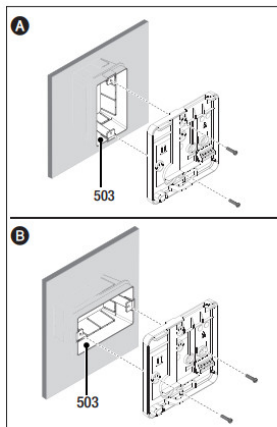
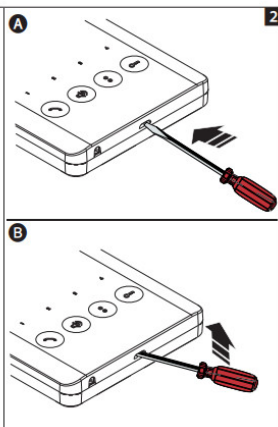
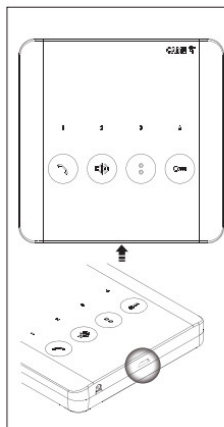
Contents


- [1 FA01623M4A Interphone Mains Libres Came](#)
- [2 General precautions](#)
- [3 Technical data](#)
- [4 Installation 2](#)
- [5 Connection examples](#)
- [6 Documents / Resources](#)
 - [6.1 References](#)

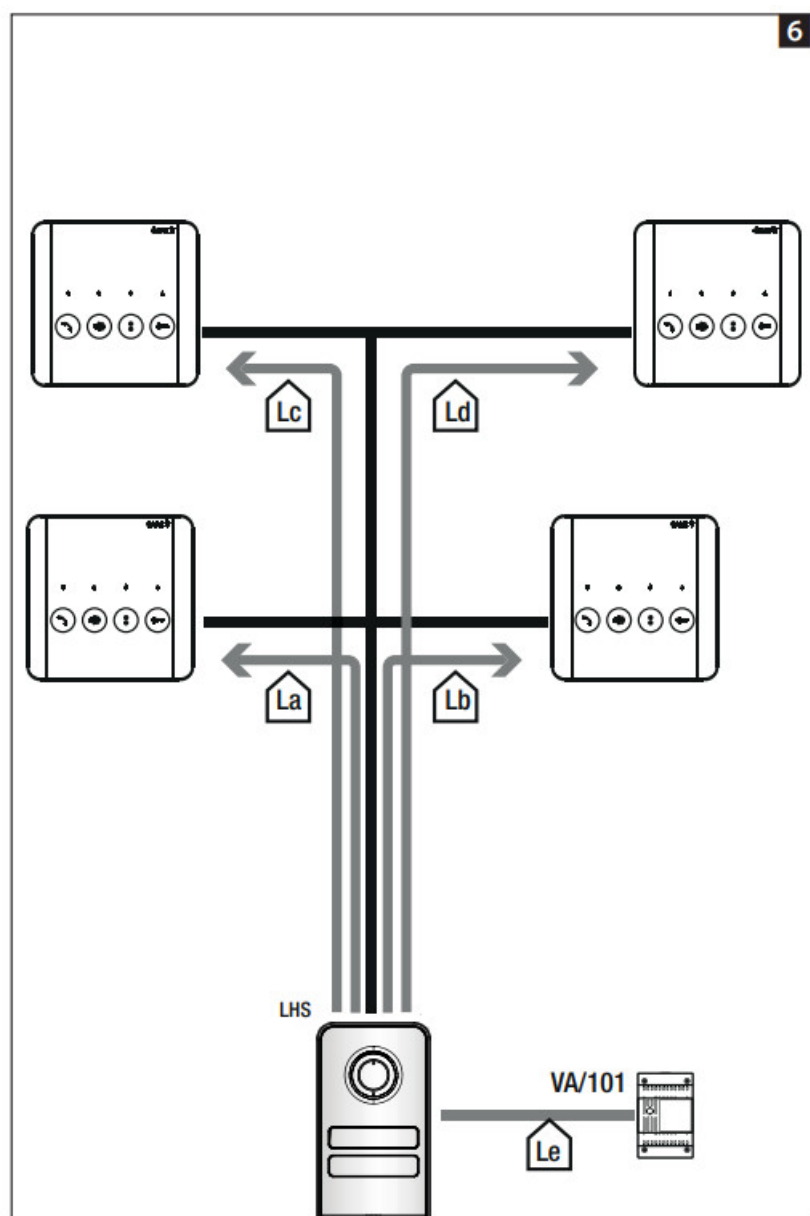
FA01623M4A Interphone Mains Libres Came




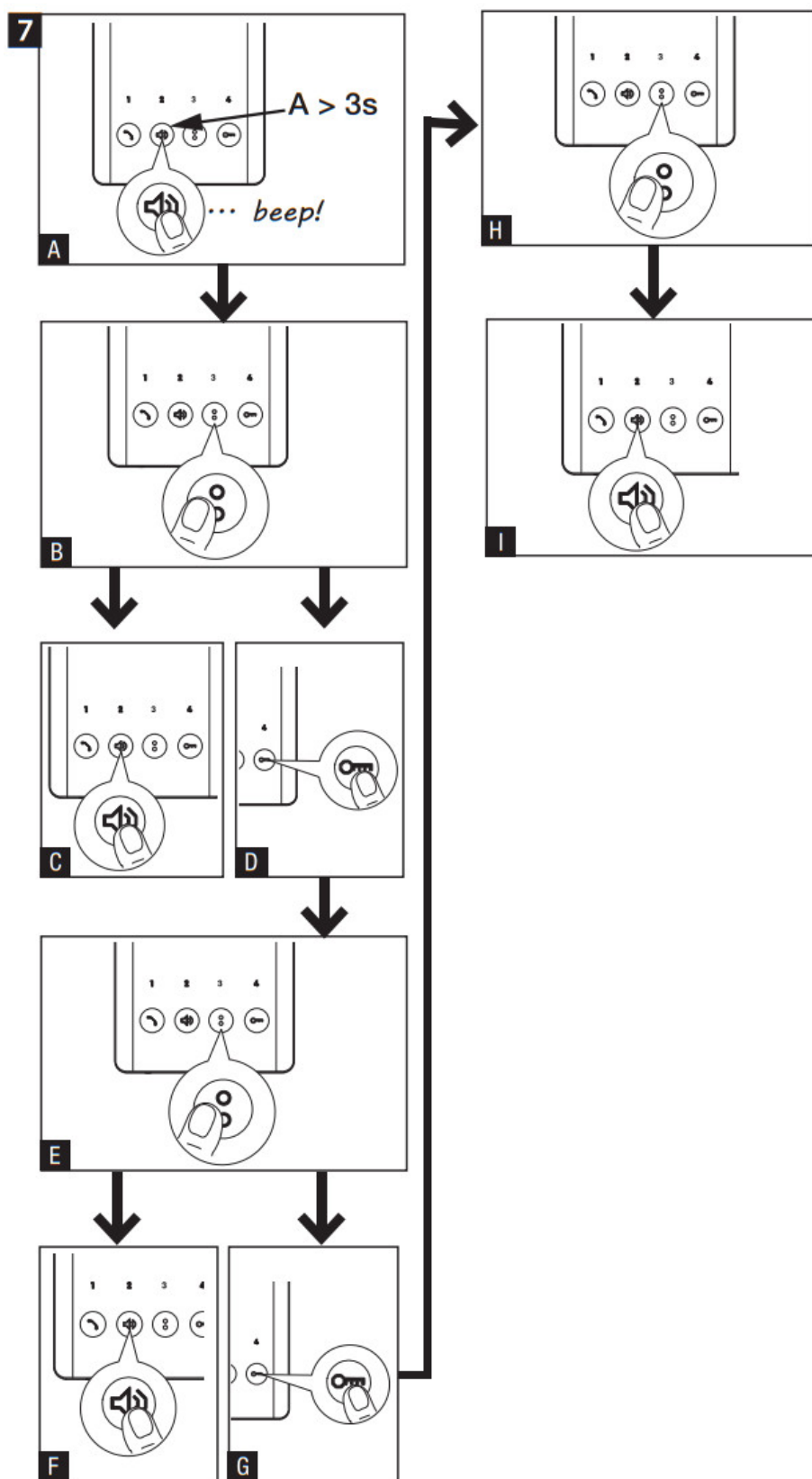
X		AUX		SW1 INT	
		ON		1 2 3 4	
				SW1 INT	
SW1-1	OFF-INT	←1	INT 1 (4)		
	ON-AUX				
SW1-2	OFF-INT	→2	INT 2 (5)		
	ON-AUX				
SW1-3	OFF-INT	↓3	INT 3 (6)		
	ON-AUX				
SW1-4	OFF-INT	↑4	INT 1-3/4-6		
	ON-AUX				



	VCM/1D	VCM/2D	UTP/CAT 5	2×2,5mm ²
La, Lb, Lc, Ld	≤250 m	–	≤250 m	–
L1, L2, L3	–	≤100 m	–	–
L1+L2+ L3	–	≤300 m	–	–
La(Lb, Lc, Ld)+L1(L2, L3)	≤250 m			
La+Lb+Lc+Ld+L1+L2+L3	≤600 m			



	VCM/1D	VCM/2D	UTP/CAT 5	2×2,5mm ²
La, Lb, Lc, Ld	≤250 m	–	≤250 m	–
Le	≤25 m	–	–	≤60 m
La(Lb, Lc, Ld)+Le	≤250 m			



General precautions

- Read the instructions carefully before beginning the installation and carry out the procedures as specified by the manufacturer.
- The product must be installed, programmed, commissioned and serviced by qualified technicians, correctly trained with regard to respecting the regulations in force, including implementing accident prevention measures.
- Before carrying out any cleaning or maintenance operation, disconnect the power supply.
- The equipment must only be used for the purpose for which it was designed.

- The manufacturer declines all liability for any damage as a result of improper, incorrect or unreasonable use.
- The product, in its original packaging supplied by the manufacturer, must only be transported in a closed environment (railway carriage, containers, closed vehicles).
- If the product malfunctions, stop using it and contact customer services at <https://www.came.com/global/en/contact-us> or via the telephone number on the website.



The manufacture date is provided in the production batch printed on the product label. If necessary, contact us at <https://www.came.com/global/en/contact-us>.



The general conditions of sale are given in the official CAME price lists.

Description of PLX A 1 A – 1 B

Intercom internal audio receiver.

Function of terminals M1

B

BBUS-line input



+

Landing call

AL

ALAlarm input

Technical data

Type	PLX A
Power supply from BUS (V DC)	15 to 20
Consumption in stand-by mode (mA)	<1
Maximum consumption (mA)	30
Single LED consumption (mA)	1
Storage temperature (°C)*	-25 to +70
Operating temperature (°C)	+5 to +40
IP Rating	IP 30
Average life (hours)**	150,000

(*) Before installing the product, keep it at room temperature where it has previously been stored or transported at a very high or very low temperature.

(**) The average product life is a purely indicative estimate. It applies to compliant usage, installation and maintenance conditions. It is also influenced by other factors, such as climatic and environmental conditions.

Installation 2

- Prise open the device by inserting a screwdriver, preferably a flat-head screwdriver measuring 5.5 mm, in the

slot in the bottom of the device as shown in 2 A and lifting it upwards as shown in 2 B.

- Separate the shell from the bottom of the device.
- Thread the connection wires through the hole in the bottom.
- Fasten the bottom of the device to the box on the wall 3 A – 3 B – 3 C.

The box must be installed at an appropriate height for the user. Avoid overtightening the screws.
Make the connections, then reattach the shell to the bottom of the device 4.

Connection examples

5 Installation limits for systems powered by VA/01.

6 Installation limits for systems powered by VAS/101.

Configuring melodies 7



Perform each of the following configuration steps one after the other:

1. Entering configuration mode


Press and hold the  button for 3 seconds.

You will hear a short beep and see a red flashing LED to confirm that you have entered configuration mode A.

2. Configuring the melody associated with the entry panel call

To listen to the melodies in sequence, press the  button B.

To select the melody and exit configuration mode, press the  button C.


To select the melody and continue configuration, press the  button.

You will hear two short beeps to confirm that you have entered landing call configuration mode D.

3. Configuring the landing call melody


To listen to the melodies in sequence, press the  button E.


To select the melody and exit configuration mode, press the  button F.

To select the melody and continue configuration, press the  button.

You will hear three short beeps to confirm that you have entered configuration mode for the number of rings per call G.

4. Configuring the number of rings per call


Press the  button as many times as the number of rings you want (from 1 to 12 rings) H.

Three seconds after the button is last pressed, the selected call will be played back with the chosen number of rings. To exit configuration mode, press the  button I.



To program a call, please see the entry panel manuals.

5. Function setting for buttons 1-4

Buttons 1-4 can be configured as intercom calls (default) or auxiliary commands by setting the relevant SW1 dipswitch positions (see Table  for the 1-4 front button functions according to the position of dipswitches SW1-1 to 1-4).

Legislative references

This product complies with the applicable standards in force at the time of manufacturing.

FCC – This device complies with part 15 of the FCC Rules.

Operation is subject to the following two conditions: (1) this device may not cause harmful interference / (2) this device must accept any interference received, including interference that may cause undesired operation.

The product complies with the relevant directives in force.

Dismantling and disposal. Dispose of the packaging and the device responsibly at the end of its life cycle, in compliance with the laws in force in the country where the product is used. The recyclable components are marked with a symbol and the material ID marker.

THE DATA AND INFORMATION IN THIS MANUAL ARE SUBJECT TO CHANGE AT ANY TIME AND WITHOUT ANY ADVANCE WARNING. UNLESS OTHERWISE INDICATED, MEASUREMENTS ARE GIVEN IN MILLIMETRES.

FA01623M4A – 11/2022

Translation of the original instructions



CAME S.p.A.

Via Martiri Della Libertà, 15

31030 – Dosson di Casier

Treviso – Italy

tel. (+39) 0422 4940

fax. (+39) 0422 4941

info@came.com

www.came.com

came.com

FA01623M4A – 11/2022

Documents / Resources



[CAME FA01623M4A Interphone Mains Libres Came](#) [pdf] Instruction Manual

FA01623M4A Interphone Mains Libres Came, FA01623M4A, Interphone Mains Libres Came, Mains Libres Came, Libres Came, Came

References

- [CONTACT US | CAME](#)
- [Homepage Installers | Came](#)
- [CONTACT US | CAME](#)
- [Homepage Installers | Came](#)
- [CONTACT US | CAME](#)
- [User Manual](#)