



CAMDOTS GD10 Dual Dash Camera User Guide

[Home](#) » [CAMDOTS](#) » CAMDOTS GD10 Dual Dash Camera User Guide 

CAMDOTS GD10 Dual Dash Camera User Guide

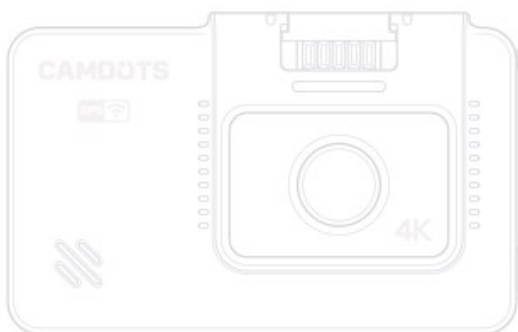


Contents

- 1 What's in the Box
- 2 Camera Overview
- 3 Installation
 - 3.1 Insert the memory card
 - 3.2 Install the bracket on the dash cam
 - 3.3 Install the dash cam on the windshield
 - 3.4 Install the rear camera
- 4 Charging
- 5 Formatting the Memory Card
- 6 Starting Recording
 - 6.1 Main interface
 - 6.2 Gestures
- 7 Time Zone Setting
- 8 Download CAMDOTS APP
 - 8.1 APP download
 - 8.2 Connect to CAMDOTS APP
 - 8.3 APP playback
 - 8.4 Using CAMDOTS APP to download videos to your phone
- 9 Frequently Q & A
- 10 (1) What to do if the dash cam does not turn on anymore?
- 11 (2) What to do if the dash cam keeps turning on and off automatically?
- 12 (3) What to do if the dash cam does not hold a charge anymore?
- 13 (4) What to do if the CAMDOTS APP can't connect to your dash cam?
- 14 (5) What to do if the Wifi is not connected?
- 15 (6) What to do if the dash cam shows Slow Card or Please Insert Card?
- 16 (7) What to do if the dash cam stops recording?
 - 16.1 Contact US
 - 16.2 User Manual
 - 16.3 FCC Statement
 - 16.4 Documents / Resources
 - 16.4.1 References
 - 16.5 Related Posts

What's in the Box

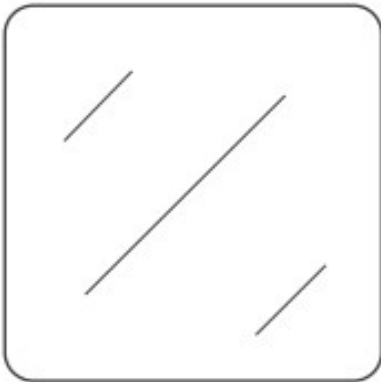
- GD10 Dual Dash Cam × 1



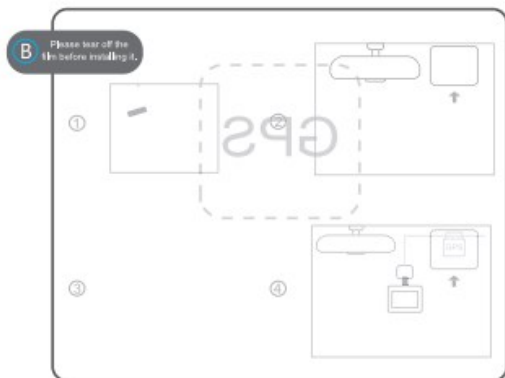
- Dash Cam Bracket × 1



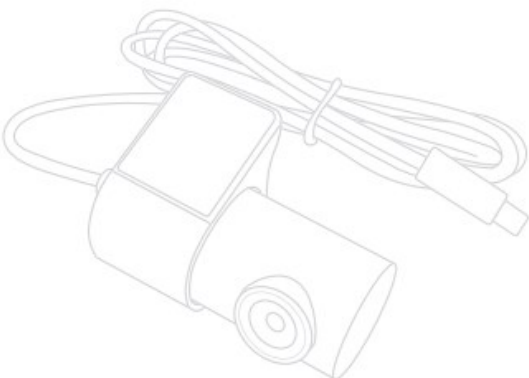
- Double-Sided Adhesive Tape for Dash Cam × 2



- Electrostatic Sticker × 2



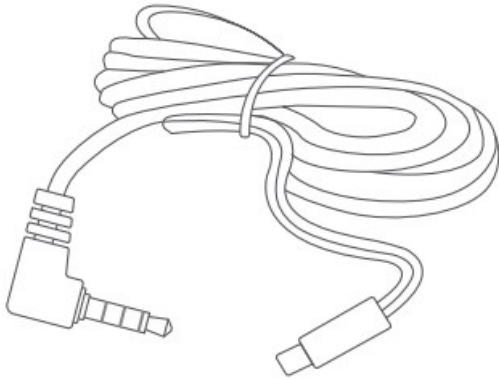
- Rear Camera × 1



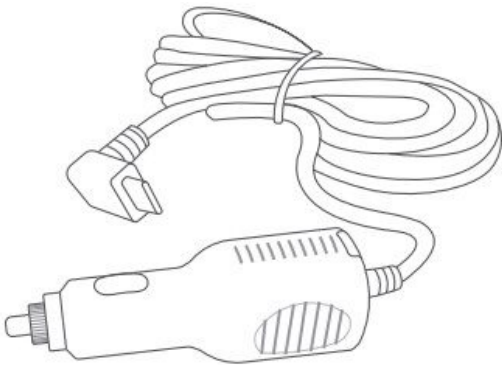
- Double-Sided Adhesive Tape for Rear Camera × 4



- 6m Rear Camera Extension Cable × 1



- Car Charger with 3.5m Power Cable × 1



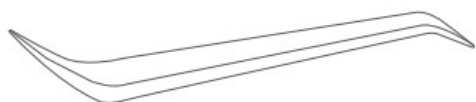
- Cable Clip × 5



- Screw × 2



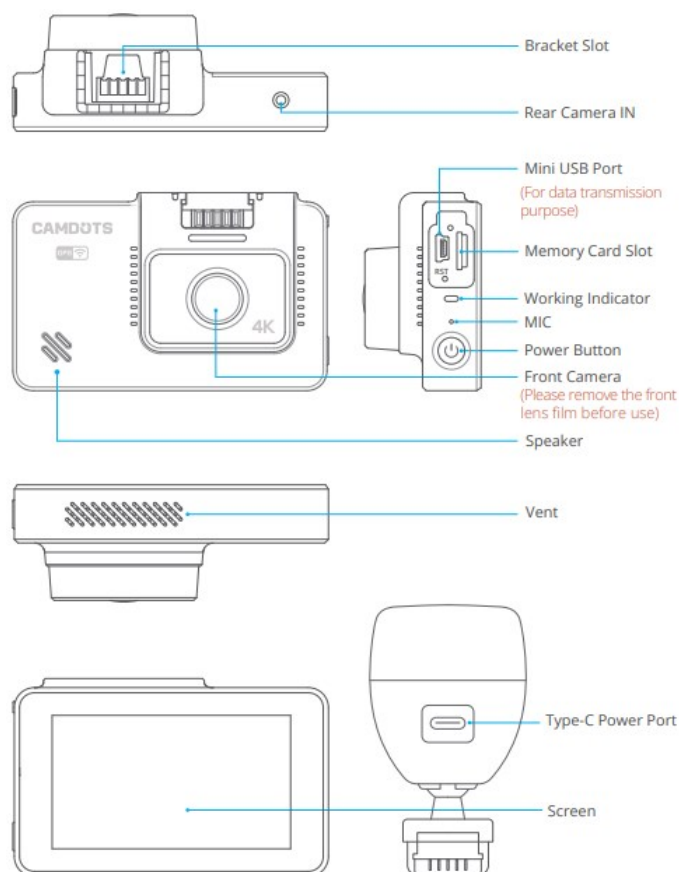
- Car Crowbar × 1



- Quick Start Guide × 1



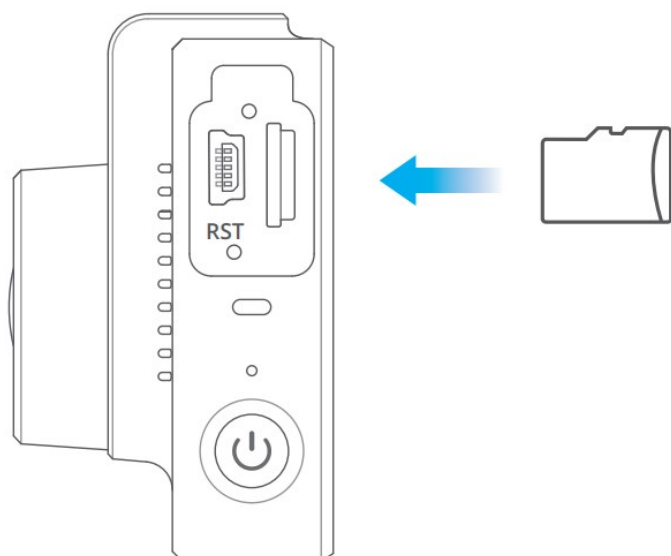
Camera Overview



Installation

Insert the memory card

Tips: The GD10 dash cam supports a Class 10 or above memory card of up to 256 GB (memory card not included). Please format the memory card on the computer first and then in the camera before using it. Do not remove or insert the memory card when the dash cam is turned on as this may damage the card.



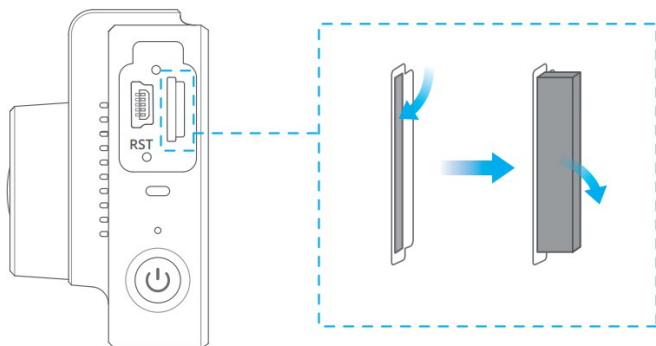
1. To install

Make sure the camera is turned OFF first. Insert the memory card half way in. Then use the finger nail to push the card all the way inward until it clicks and locks in place.

2. To remove card

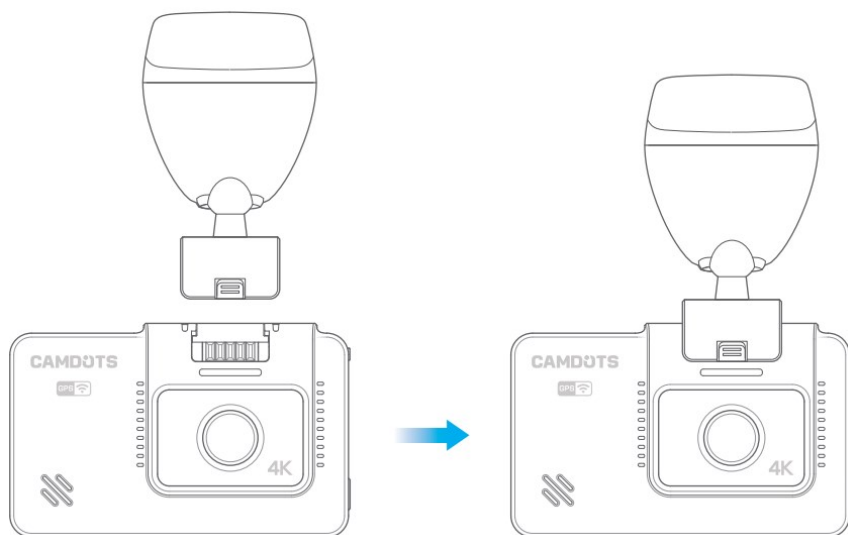
To remove the memory card, gently push its edge inward until it clicks, and then pops out, then simply pull it out

of the slot.



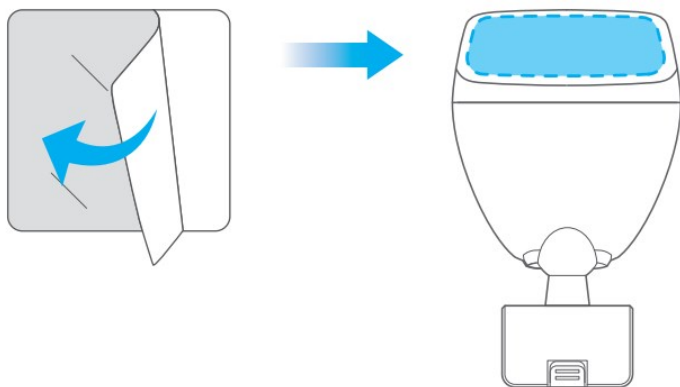
Tips: We recommend you format the card every 2 months to keep it running smoothly. The memory card has a certain life span. After repeated reading, writing, and wiping, the memory card's life will be shortened. When the card frequently reports errors, please replace it with a new one.

Install the bracket on the dash cam

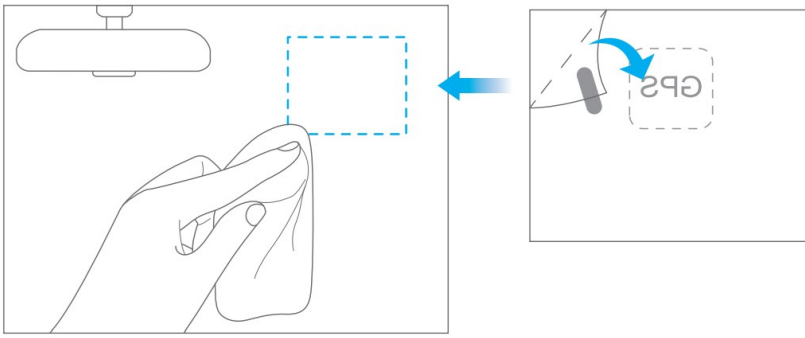


Install the dash cam on the windshield

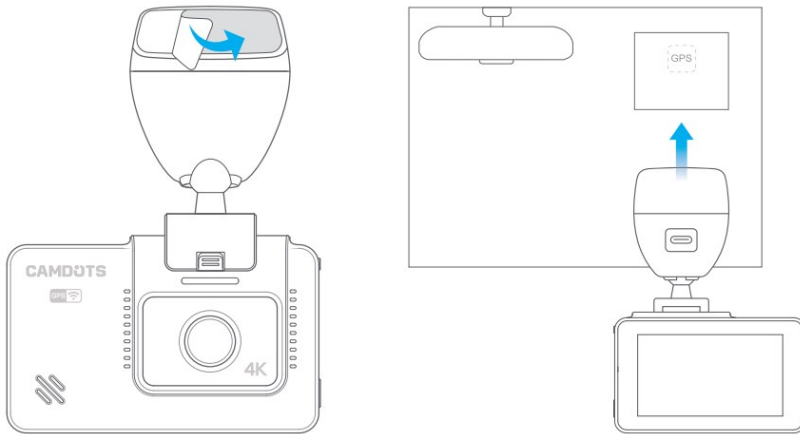
1. Take off one film on the dash cam bracket sticker, and apply it to the dash cam bracket.



2. Clean the windshield with a dry cloth, then remove the film of the electrostatic sticker and apply the sticker to the windshield. Make sure there is no air between the electrostatic sticker and windshield, which is the key point to make the installation more stable.



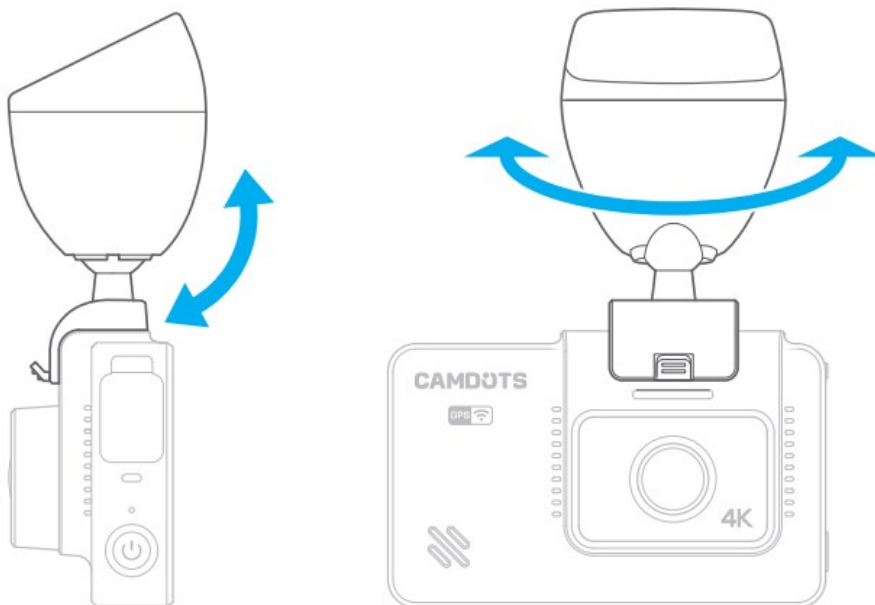
3. Peel off the other film on the dash cam bracket sticker, and secure it on the electrostatic sticker.



Notes:

1. If you want to remove the dash cam, please take off the electrostatic sticker.
2. You can stick the dash cam to the windshield without using the electrostatic sticker.
3. **Adjust the viewing angle.**

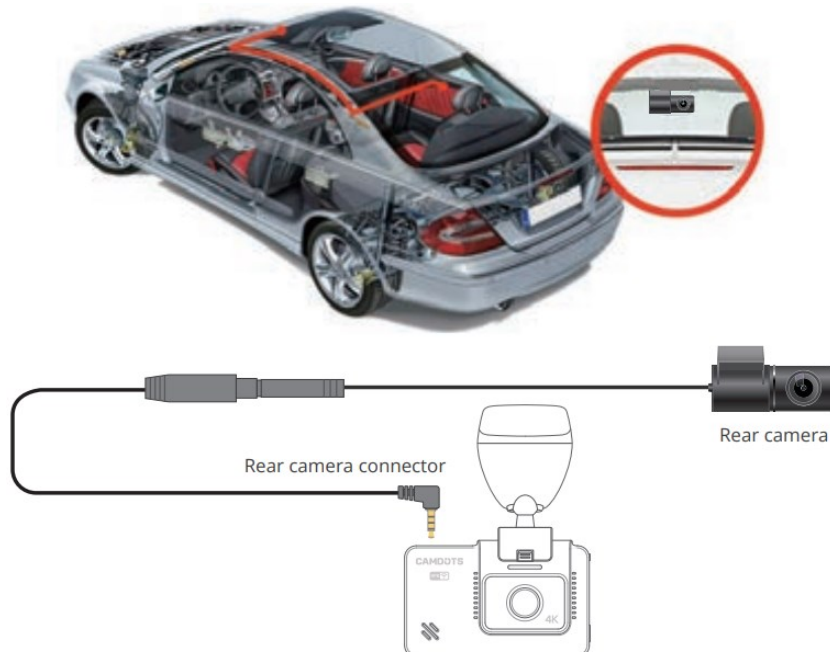
The dash cam bracket supports a 120° horizontal and 90° vertical rotation, which allows you to easily attach it to the windshield.



Install the rear camera

The rear camera supports a 360 ° free rotation. You' re free to install it. The power cables are routed as follows.

Warm tip: The rear camera is not resistant to water. Please do not install it outside your car.



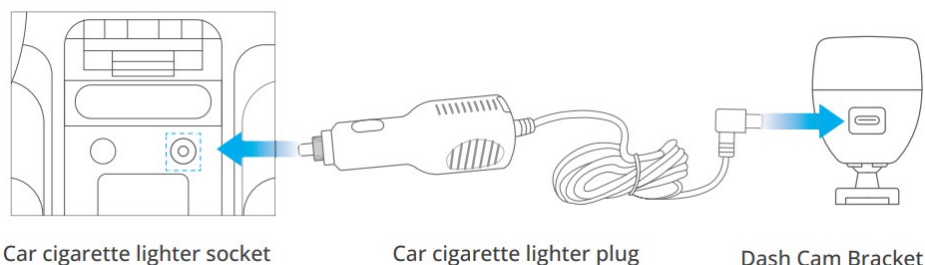
Notes:

1. When connecting the rear camera with the extension cable, please refer to the details below.
2. Please clean the position to ensure the adhesive quality before installing the rear camera.
3. Please clean the rear windshield regularly to ensure the image quality.
4. Please use the original extension cable and rear camera. If you replace the rear camera with product of other brands, the effect may be affected and the machine may be damaged.
5. Check the interface, the connecting wire and the rear camera interface and make sure they are plugged in tightly.
6. Please plug in the rear camera when the camera is turned off. Do not frequently hot-plug the interface in case any damage is caused to the camera. For more details, please refer to the attached video:

<https://www.youtube.com/watch?v=CZYaV5Dh4ok>.

Charging

Connect the USB power cable to the Type-C power port of the dash cam bracket, then plug the car charger into the cigarette lighter of your car.



Do NOT connect the camera to PC for charging. Use the 110V wall outlet instead. The device will start up automatically and record as soon as it gets connected to power, save the last video file and power off automatically after cutting the power supply.

Turning your camera ON/OFF


Auto Power ON: CAM DOTS GD10 dash cam is designed to turn ON automatically when it receives power, I.e.

when the car engine is started.

Auto Power OFF: The camera is also pre-configured to turn OFF automatically within a few seconds when the power gets disconnected, i.e. when the car key is turned to LOCK position.

Formatting the Memory Card

Please format your memory card in the camera before using this dash cam and use a high-speed memory card of Class 10 or higher.

1. Tap the **“Settings”** icon  to enter the Settings page.
2. Select **“Format SD”**, then tap the **“Confirm”** icon. Wait a few seconds to finish the formatting process. The system will then exit automatically.

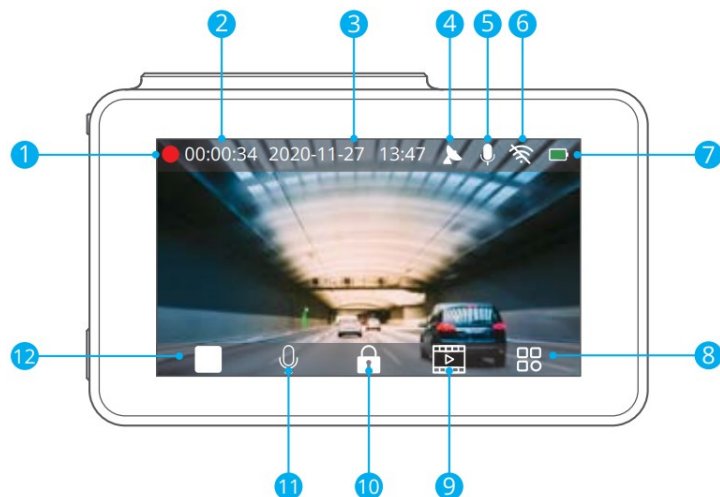


Notes:

1. All data will be deleted after formatting. So before formatting your memory card, please remember to back up your important data on your other devices.
2. Every time you insert a memory card, please format it in the camera to ensure that it is compatible with the camera.

Starting Recording

Main interface



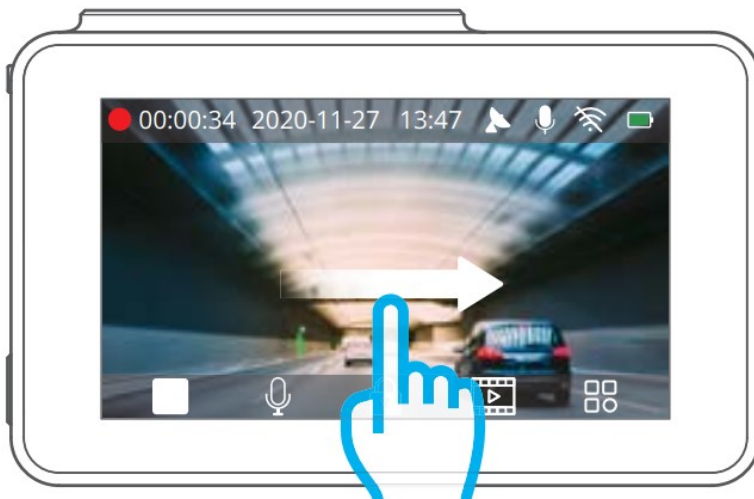
1. Recording indicator

2. Video time
3. Date/Time
4. GPS
5. Microphone indicator
6. Wi fi indicator
7. Power status
8. Settings
9. Album
10. Emergency recording
11. Audio recording (Mute/Unmute)
12. Stop/Start recording

Gestures

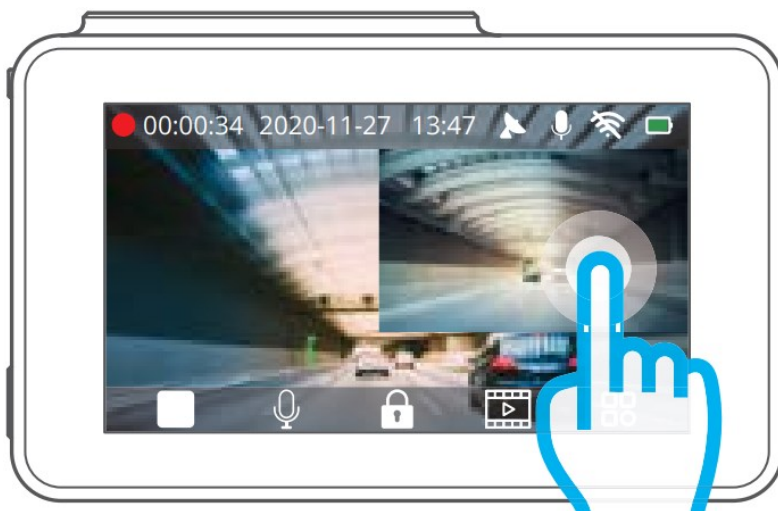
1. Taking a photo

In the video recording mode, slide from left to right to take photos.



2. Switching recording display modes

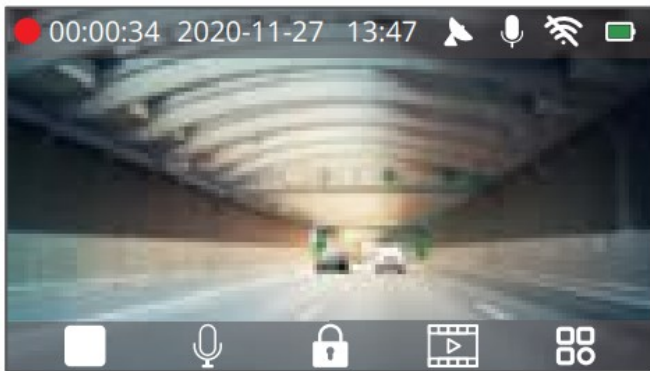
Tap the right side of the screen to quickly switch the recording display modes from either the full-screen display of the front/rear camera or the picture-in-picture display of both cameras.



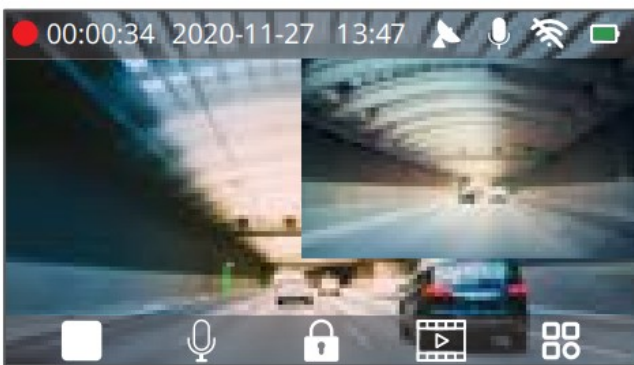
Display of the front



Display of the rear

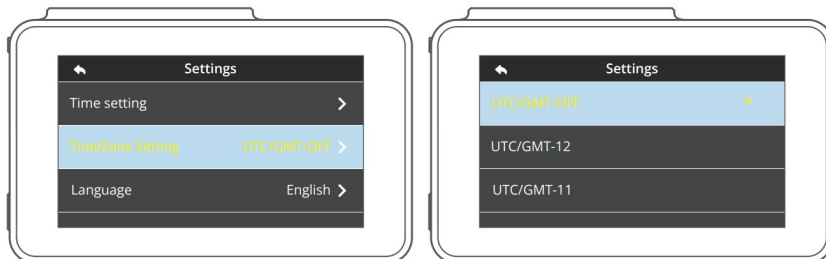


Picture-in-picture



Time Zone Setting

Choose the time zone manually. The device will then display the time of the selected time zone. (Default Setting: OFF)



Download CAMDOTS APP

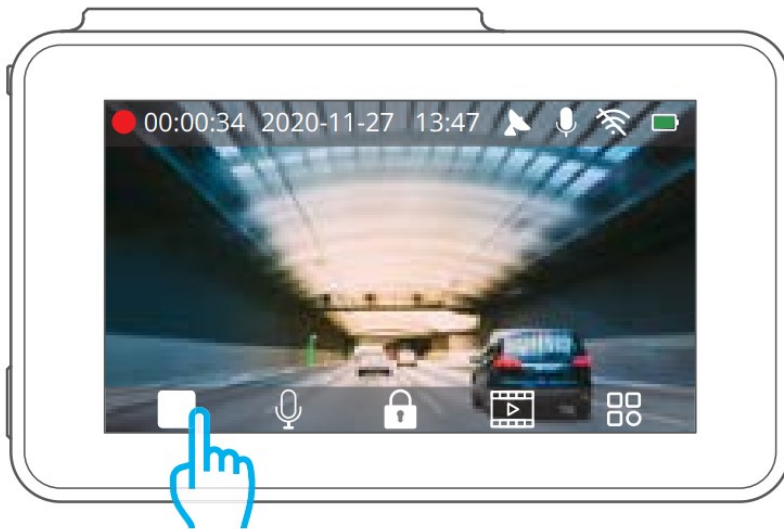
APP download


Download the up-to-date **CAMDOTS APP** on the APP Store or Google Play.



Connect to CAMDOTS APP

1. Stop video recording on the dash cam.



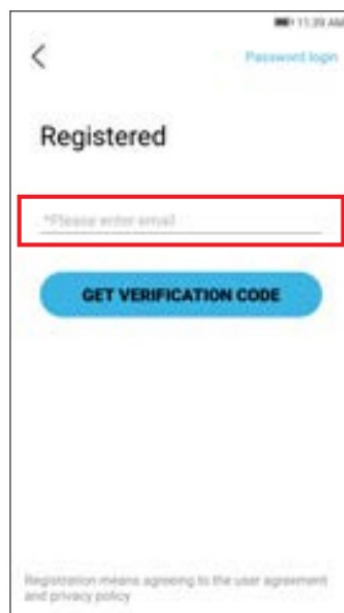
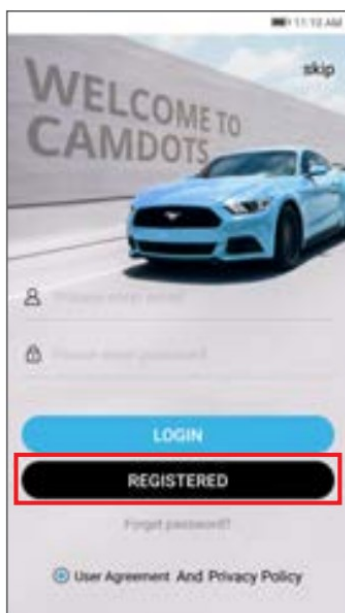
2. After pausing video recording, tap the "Wifi" icon  on the dash cam, wait for 1-2 seconds to enter Wifi mode (once you quit, the Wifi will be disconnected).



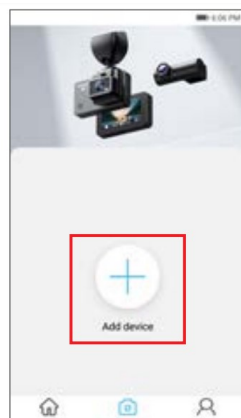
3. Go to your phone's Wifi settings, search the Wifi SSID named **CAMDOTS**_****, and enter the password: 12345678 for connection.



4. Open the CAMDOTS APP, tap the “**REGISTERED**” icon, enter your email to get the verification code for login

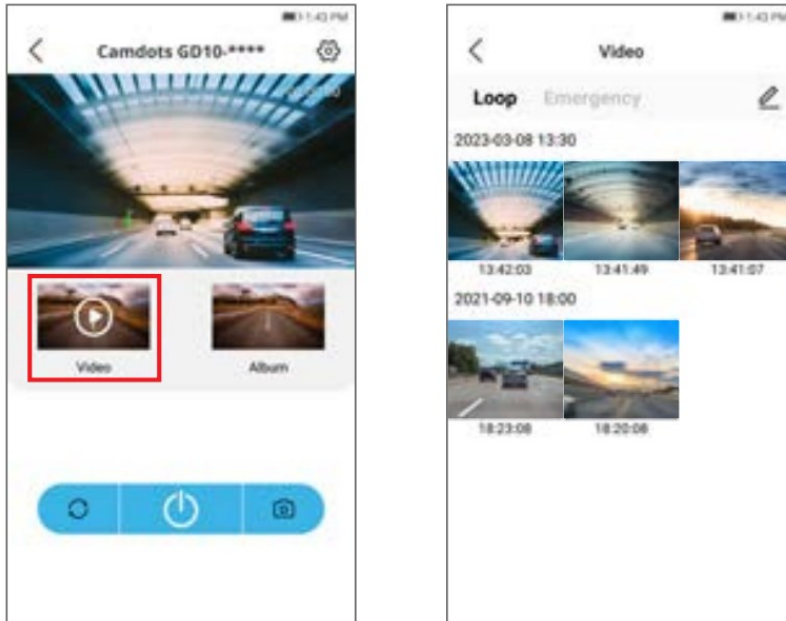


5. Tap the “**Device**” icon at the bottom center, then tap “**Add device**” to add your camera model, wait a few seconds to enter the preview interface.



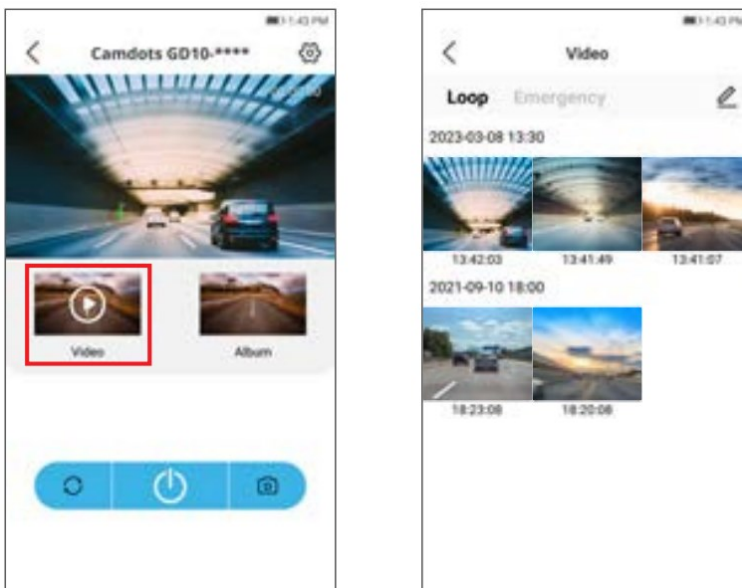
1. Connect your dash cam to the phone CAMDOTS APP.
2. Add your dash cam to the **CAMDOTS** APP by tapping '+’.
3. Enter the preview interface, tap the Video set icon to enter the video menu.
4. Tap the video you want to watch for playback.



Note: The CAMDOTS APP works with CAMDOTS dash cams only



Using CAMDOTS APP to download videos to your phone

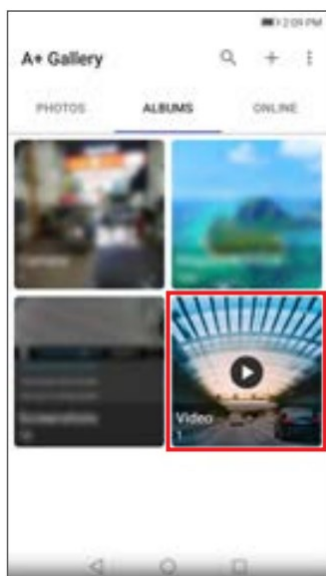
1. Tap the Video icon to enter the video menu.



2. Tap the Select icon “” at the upper right corner and choose the video you want to download.
3. Tap the Download icon  at the bottom left corner to download the video.



4. Wait for the completion of download progress, the downloaded video should be in the phone's photo album, tap the video to play back or forward.



Frequently Q & A

Warm Tips: For any product issues, please feel free to contact us anytime for technical support.

(1) What to do if the dash cam does not turn on anymore?

- ① Check if the indicator light on the car charger turns on when your dash cam is plugged in. ② If not, plug the dash cam into another cigarette lighter or USB port for about one hour to see if it finally turns on. ③ If your issue remains, kindly contact customer service for further help

(2) What to do if the dash cam keeps turning on and off automatically?

- ① Remove the memory card and then use a USB charger to check if the dash cam turns on normally. ② If so, turn off your dash cam and charge it in with the original 5V car charger for about one hour, then turn it on manually to see if it works normally. ③ If your issue remains, restore your dash cam to the factory settings or contact customer service for further technical support.

(3) What to do if the dash cam does not hold a charge anymore?

① Make sure you plug in your dash cam with the original charger. ② Plug in your dash cam with a USB charging cable to check if it holds a charge normally. ③ If the camera still does not hold a charge with the USB cable, kindly contact customer service for further help

(4) What to do if the CAMDOTS APP can't connect to your dash cam?

① Make sure you have installed the up-to-date CAMDOTS APP on your phone. ② Make sure the you have connected the camera Wifi successfully on your phone's wifi settings before connecting the APP. ③ Do not exit the APP interface during the connection process. ④ If your issue remains, kindly contact customer service for further help

(5) What to do if the Wifi is not connected?

① Check if your dash cam enters Wifi mode and displays the Wifi information after you tapped the Wifi icon. Warm tip: Do not exit the Wifi screen, otherwise, the camera Wifi will be disconnected. ② If so, check if the camera Wifi appears in your phone's Wifi list. ③ If the camera does not enter Wifi mode or if you do not find the Wifi SSID in your phone's Wifi list, kindly contact customer support for further help

(6) What to do if the dash cam shows Slow Card or Please Insert Card?

① Select the memory card according to the user manual, such as a U3 memory card or above. ② Remember to format the card on the computer first and then in the dash cam before using it.

(7) What to do if the dash cam stops recording?

① Make sure Loop recording mode is enabled. ② Format the memory card or try another SD card. ③ Make dash cam's date and time synchronize with that on your phone. ④ If your issue remains, kindly contact customer service for further help

Contact US



(888) 811-1140 (US) Mon-Fri (except holiday) 9am-5pm (EST)



cs@camdots.net



www.camdots.net

For any inquiries about **CAMDOTS** products, please feel free to contact us. We will respond within 24 hours.

User Manual

Scan the following QR Code or visit the **CAMDOTS** website to download the detailed user manual.



www.camdots.net/manual/gd10.pdf

FCC Statement

Changes or modifications not expressly approved by the party responsible for compliance could void the user's authority to operate the equipment. This equipment has been tested and found to comply with the limits for a Class B digital device, pursuant to Part 15 of the FCC Rules. These limits are designed to provide reasonable protection against harmful interference in a residential installation. This equipment generates uses and can radiate radio frequency energy and, if not installed and used in accordance with the instructions, may cause harmful interference to radio communications. However, there is no guarantee that interference will not occur in a particular installation. If this equipment does cause harmful interference to radio or television reception, which can be determined by turning the equipment off and on, the user is encouraged to try to correct the interference by one or more of the following measures:

- Reorient or relocate the receiving antenna.
- Increase the separation between the equipment and receiver.
- Connect the equipment into an outlet on a circuit different from that to which the receiver is connected.
- Consult the dealer or an experienced radio/TV technician for help This device complies with part 15 of the FCC rules

Operation is subject to the following two conditions

1. this device may not cause harmful interference, and
2. this device must accept any interference received, including interference that may cause undesired operation.

This equipment complies with FCC radiation exposure limits set forth for an uncontrolled environment. This equipment should be installed and operated with minimum distance 20cm between the radiator & your body.



Documents / Resources



[CAMDOTS GD10 Dual Dash Camera](#) [pdf] User Guide
2AYD2-GD10, 2AYD2GD10, gd10, GD10 Dash Camera, GD10, Dash Camera, Camera, GD10 Dual Dash Camera, Dual Dash Camera

References

- [Camdots](#)