



## CAMBRIDGE Rich Text Editor User Manual

[Home](#) » [Cambridge](#) » CAMBRIDGE Rich Text Editor User Manual 

### CAMBRIDGE Rich Text Editor



**CAMBRIDGE**  
**UNIVERSITY PRESS**

#### Contents

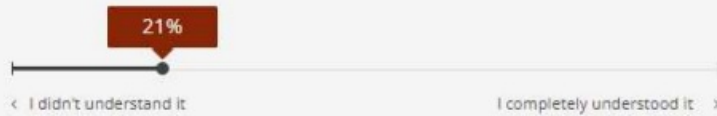
- [1 Rich Text Editor](#)
- [2 CUSTOMER SUPPORT](#)
- [3 Documents / Resources](#)
- [3.1 References](#)
- [4 Related Posts](#)

### Rich Text Editor

This new enhancement provides the students with a multifunctional rich text toolbar at the top of the “Ask your instructor a question.” text box. Allowing for better communication with the instructor.

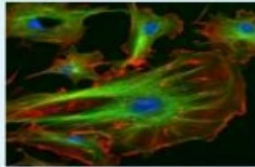
**Step 1-** Find the “Ask your instructor a question” box located at the bottom of a Learning Activity page, below the recommendation material. It’s used to send a direct message to the instructor’s inbox for quick and detailed feedback.

How well did you understand 'Membrane Proteins'?



OK. It looks as if you may want more help with this.

We recommend the following:

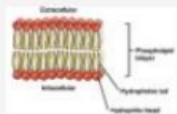


### Cells: The Basic Unit of Life

Different cell types form specialized tissues that work in concert to perform all of the functions necessary for the living organism. Cellular and developmental biologists study how the continued division of a single cell leads to such complexity and differentiation.

⌚ 3 min Start

Or try these



### Structure and Composition of the Cell Membrane

The cell membrane provides a barrier around the cell, separating its internal components from the extracellular environment. It is composed of a phospholipid bilayer, with hydrophobic internal lipid "tails" and hydrophilic external phosphate "heads."

⌚ 12 min Start



Ask your instructor a question.

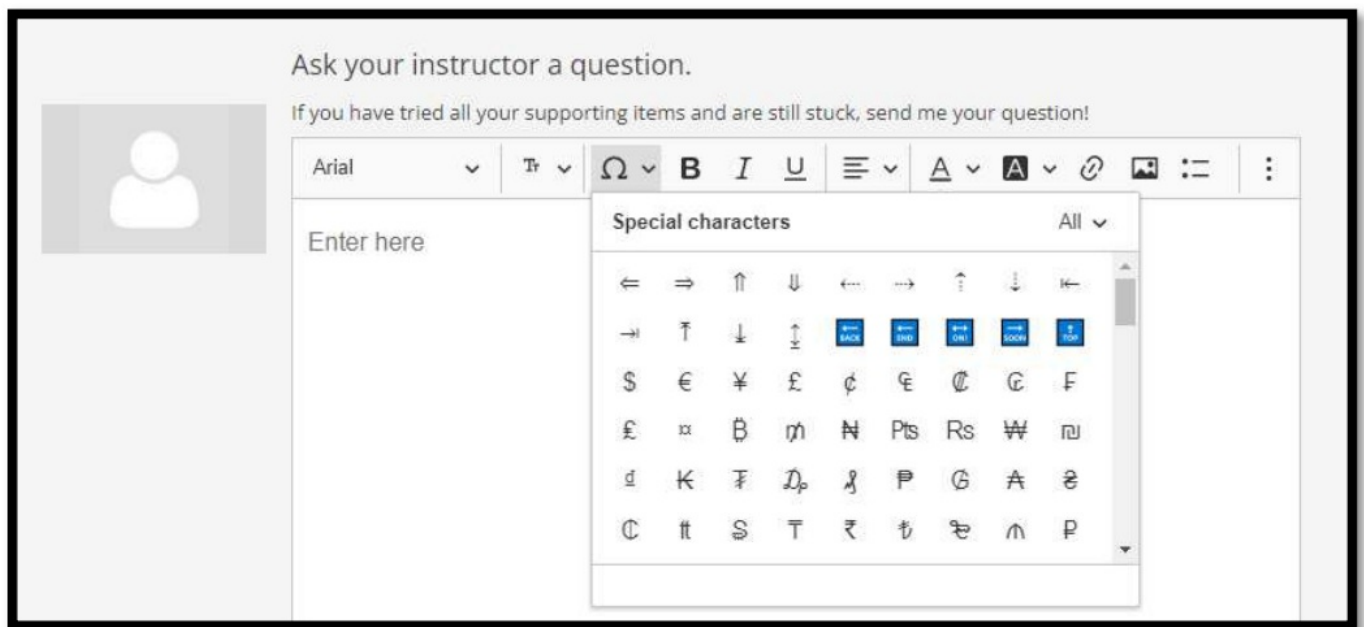
If you have tried all your supporting items and are still stuck, send me your question!

Rich text editor interface with a toolbar and a text area.

Toolbar: Arial, font size, bold (B), italic (I), underline (U), list (bulleted), link (A), unlink (A), insert image, insert video, insert table, and a menu icon.

Text area: Enter here

**Step 2** – When writing the instructor, you can use this enhancement to enter special characters, modify the font, attach a link, add an image, and add bullet points.



## CUSTOMER SUPPORT

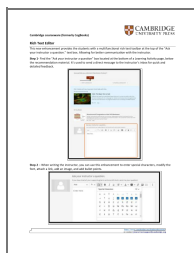
<https://www.cambridge.org/highereducation/>  
or contact [coursewaresupport@cambridge.org](mailto:coursewaresupport@cambridge.org)



# CAMBRIDGE

## UNIVERSITY PRESS

## Documents / Resources



**[CAMBRIDGE Rich Text Editor](#)** [pdf] User Manual  
Rich Text Editor, Text Editor, Editor

## References

-  [Higher Education from Cambridge University Press](#)
- [User Manual](#)

[Manuals+](#), [Privacy Policy](#)

This website is an independent publication and is neither affiliated with nor endorsed by any of the trademark owners. The "Bluetooth®" word mark and logos are registered trademarks owned by Bluetooth SIG, Inc. The "Wi-Fi®" word mark and logos are registered trademarks owned by the Wi-Fi Alliance. Any use of these marks on this website does not imply any affiliation with or endorsement.