



Cambridge Audio Edge W NQ Preamplifier with Network Player Instruction Manual

Cambridge Audio Edge W NQ Preamplifier with Network Player

Contents

- 1 ARSALAN POST INCOMPLETE**
 - 1.1 EDGE W
 - 1.2 Introduction
 - 1.3 What's included with the EDGE W?
 - 1.4 Front panel
 - 1.5 Rear panel connections
 - 1.6 Getting connected
 - 1.7 Documents / Resources
 - 1.7.1 References
 - 1.8 Related Posts

ARSALAN POST INCOMPLETE

EDGE W

Last updated: April 29, 2024 02:12. Revision #12608



Introduction

Last updated: August 9, 2022 05:04. Revision #10022

This guide is designed to make installing and using this product as easy as possible. Information in this document has been carefully

checked for accuracy at the time of printing; however, Cambridge Audio's policy is one of continuous improvement, therefore design and specifications are subject to change without prior notice.

This document contains proprietary information protected by copyright. All rights reserved. No part of this manual may be reproduced by any mechanical, electronic or other means, in any form, without prior written permission of the manufacturer. All trademarks and registered trademarks are the property of their respective owners.

© Copyright Cambridge Audio Ltd 2022.

For upcoming news on future products, software updates and exclusive offers, make sure you register your product at <https://www.cambridgeaudio.com/register> Last updated: August 9, 2022 05:04. Revision #10022
This guide is designed to make installing and using this product as easy as possible. Information in this document has been carefully

checked for accuracy at the time of printing; however, Cambridge Audio's policy is one of continuous improvement, therefore design and specifications are subject to change without prior notice.

This document contains proprietary information protected by copyright. All rights reserved. No part of this manual may be reproduced by any mechanical, electronic or other means, in any form, without prior written permission of the manufacturer. All trademarks and registered trademarks are the property of their respective owners.

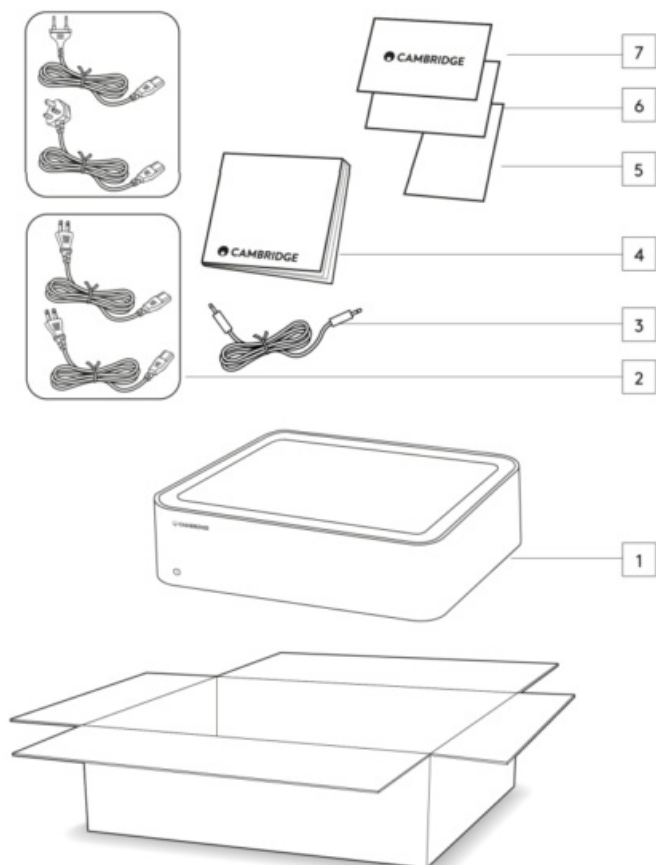
© Copyright Cambridge Audio Ltd 2022.

For upcoming news on future products, software updates and exclusive offers, make sure you register your product at <https://www.cambridgeaudio.com/register>

What's included with the EDGE W?

Last updated: August 9, 2022 05:05. Revision #10021

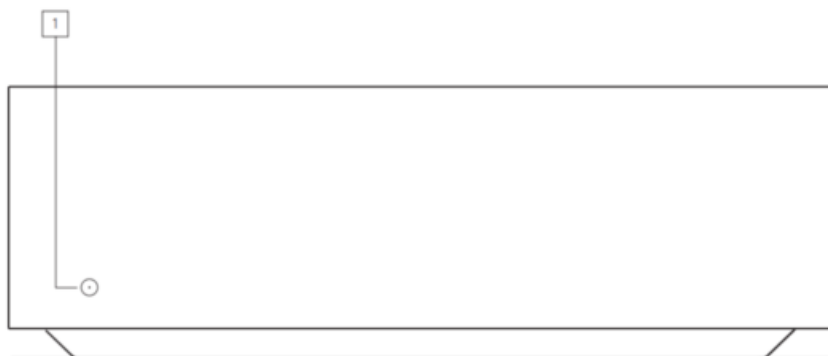
Inside the box of your EDGE W you will receive:



1. EDGE W Power Amplifier
2. UK power cord (Depending on which country the EDGE W was purchased in)
EU power cord (Depending on which country the EDGE W was purchased in)
CU power cord (Depending on which country the EDGE W was purchased in)
JP power cord (Depending on which country the EDGE W was purchased in)
3. Link Cable
4. User Manual
5. Warranty Card
6. Welcome Letter
7. Unboxing Card

Front panel

Last updated: August 9, 2022 05:05. Revision #10020



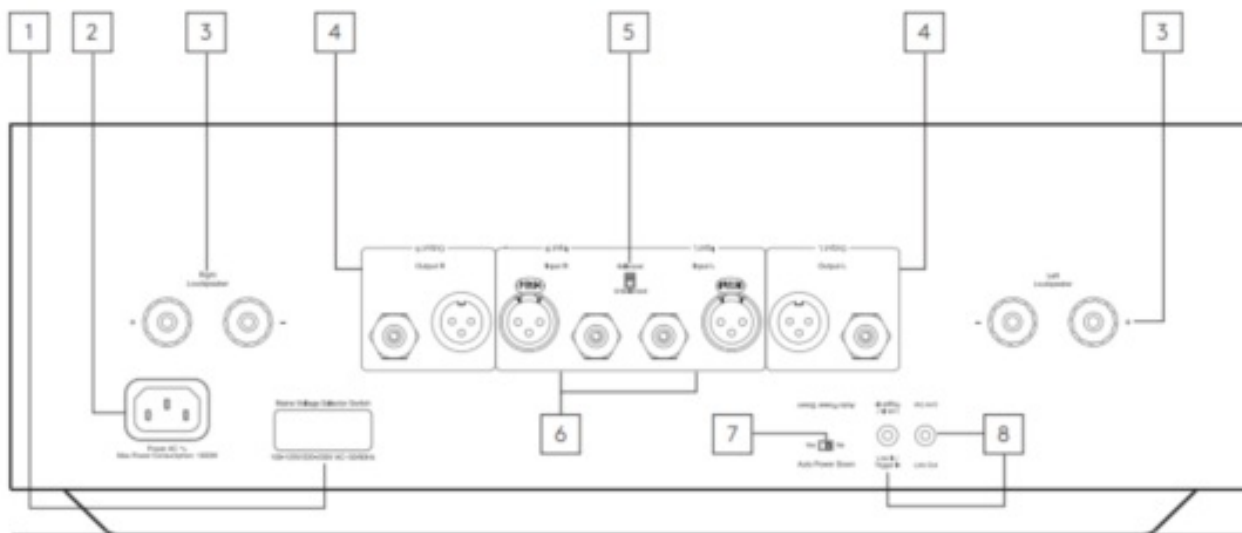
1. **STANDBY/ON** – Switches the unit between Standby mode (indicated by dim LED) and On (indicated by bright LED). Standby mode is a low power mode where the power consumption is less than 0.5 Watts.

AUTO POWER DOWN (APD)

The product will automatically switch to standby mode after inactivity of 20 minutes. To enable or disable this function, use the APD switch located on the rear of the unit.

Rear panel connections

Last updated: August 9, 2022 05:05. Revision #10019



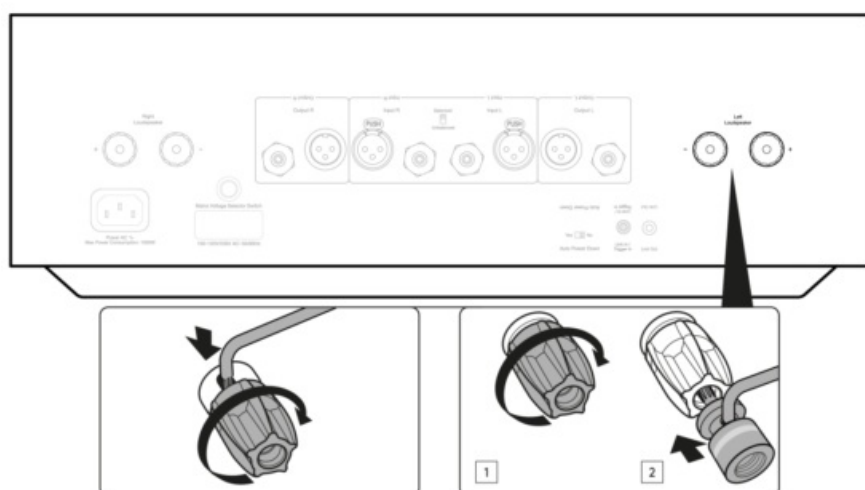
1. VOLTAGE SELECTOR SWITCH

For use by Cambridge Audio service personnel only!

2. AC POWER SOCKET

3. SPEAKER TERMINALS

Note: When using a banana plug, make sure the speaker terminals are completely tightened before inserting the plug.



Connect the wires from your left channel loudspeaker to the left positive and negative terminals and the wires from the right channel loudspeaker to the right positive and negative terminals.

In each case, the red terminal is the positive output and the black terminal is the negative output.

Care should be taken to ensure no stray strands of wire short the speaker outputs together. Please ensure that the loudspeaker terminals have been tightened completely to provide a good electrical connection.

It is possible for the sound quality to be affected if the screw terminals are loose.

4. **LOOP OUT** – This output can be used for bi-amping, daisy chaining or connecting to the input of an active subwoofer. The XLR output is balanced and the RCA output is unbalanced.
5. **BALANCED/UNBALANCED SWITCH** – Select depending on whether a source is connected to the balanced XLR or unbalanced RCA input.

Note: There will be no sound from the amp if the correct input isn't selected. If a source is connected to the balanced input, for example, ensure that the balanced switch has been selected.

6. **BALANCED/UNBALANCED INPUTS** – The XLR input is balanced and the RCA input is unbalanced.
7. **AUTO POWER DOWN (APD) SWITCH** – Switches to enable or disable the Auto Power Down function. When

enabled, the amplifier will automatically switch to standby mode after inactivity of 20 minutes.

8. LINK – Refer to the 'Power syncing' section of this manual for more information.

Getting connected

Last updated: August 9, 2022 05:05. Revision #10018

LOUDSPEAKERS

Check the impedance of your speakers. You can use types with an impedance of between 4 and 8 Ohms.

The red coloured speaker terminals are positive (+) and the black speaker terminals are negative (-). Make sure the correct polarity is maintained at each speaker connector or the sound can become weak and "phasey" with little bass.

USING BARE WIRE CONNECTIONS

Prepare the speaker cords for connection by stripping off approximately 10mm (3/8") or less of the outer insulation. More than 10mm could cause a short circuit. Twist the wires tightly together so there are no loose ends. Unscrew the speaker terminal, insert the speaker cable, tighten the terminal and secure the cable.

Note: All connections are made using standard loudspeaker cable.

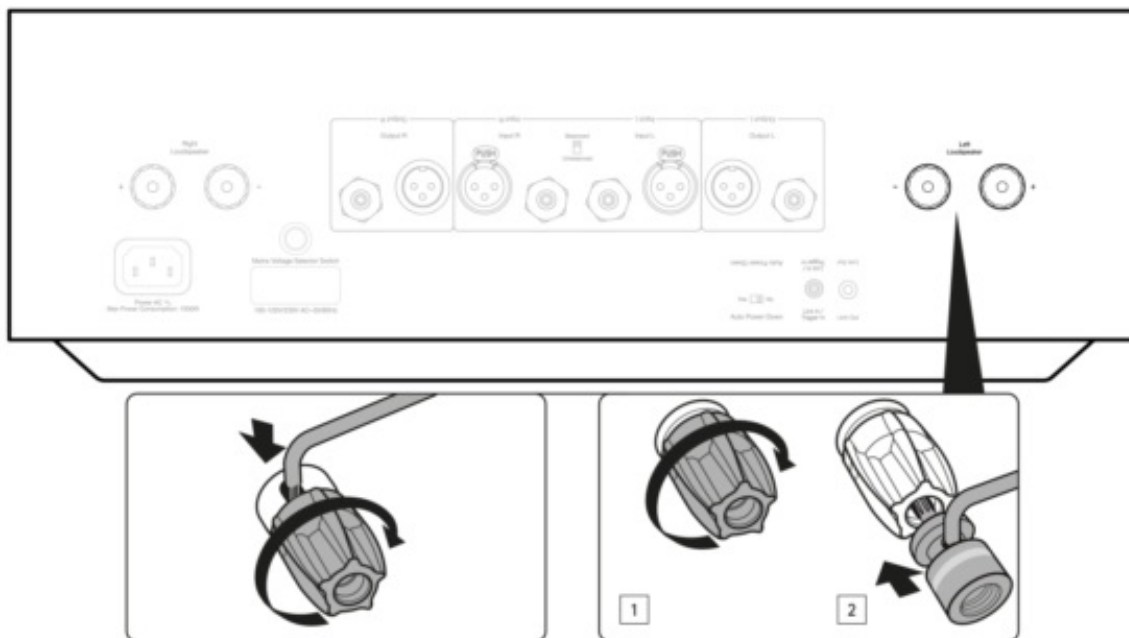


USING BANANA PLUGS

We recommend using Banana plugs with our units to establish a secure connection and ensure there are no loose strands of wire that may cause unwanted noise or interference.

Once you have stripped the outer insulation of the cable and twisted the wires as indicated below, securely connect these to your banana plugs and push the plug in as far as possible without applying excessive force.

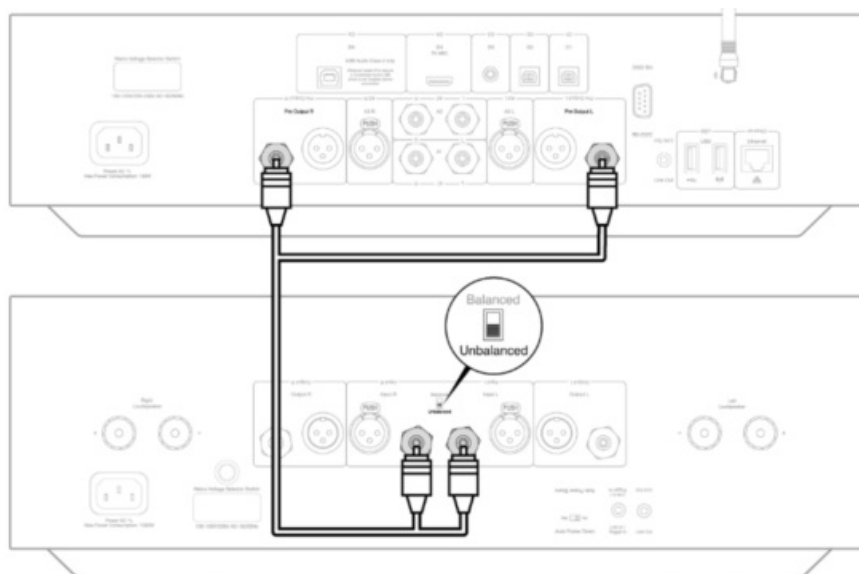
Note: When using a banana plug, make sure the speaker terminals are completely tightened before inserting the plug.



BASIC CONNECTIONS

The analogue inputs are to be connected to the Pre-Outs of a Preamplifier or Integrated amp. The diagrams below show the basic connection from a Preamplifier.


Unbalanced input:



Using RCA cables will enable an unbalanced analogue connection to your EDGE W. If using RCA cables, ensure the 'Unbalanced' switch on your EDGE W is selected.

Balanced input:

Documents / Resources

	<p>Cambridge Audio Edge W NQ Preamplifier with Network Player [pdf] Instruction Manual Edge W NQ Preamplifier with Network Player, Edge W, NQ Preamplifier with Network Player, Network Player, Player</p>
--	--

References

- [🔗 Contact Us - | Cambridge Audio UK](#)
- [🔗 Register your product | Cambridge Audio UK](#)
- [🔗 Register your product | Cambridge Audio US](#)
- [User Manual](#)

[Manuals+](#), [Privacy Policy](#)

This website is an independent publication and is neither affiliated with nor endorsed by any of the trademark owners. The "Bluetooth®" word mark and logos are registered trademarks owned by Bluetooth SIG, Inc. The "Wi-Fi®" word mark and logos are registered trademarks owned by the Wi-Fi Alliance. Any use of these marks on this website does not imply any affiliation with or endorsement.