




Cambium Networks E1722 EX5-8 Wifi 6E Indoor Access Point User Manual

[Home](#) » [Cambium Networks](#) » Cambium Networks E1722 EX5-8 Wifi 6E Indoor Access Point User Manual 



Contents

- [1 Intended Use](#)
- [2 Installation and operation](#)
- [3 Product safety information](#)
- [4 Operation in the USA](#)
- [5 Connecting what matters](#)
- [6 Documents / Resources](#)

Intended Use

The enterprise Wi-Fi products from Cambium Networks are intended for delivering indoor wireless LAN data networks.

The XE5-8 is a Multi-Radio design with internal antennas. The 802.11ax standard is more efficient than previous generations, providing performance enhancements, network segmentation, and improved battery life.



<https://www.cambiumnetworks.com/guides>

<https://learning.cambiumnetworks.com>

<https://support.cambiumnetworks.com>

<https://www.cambiumnetworks.com/support/standard-warranty/>

Cambium Networks Ltd, Unit B2 Linhay Business Park, Eastern Road Ashburton, Devon, TQ13 7UP, United Kingdom

Installation and operation

Installation and operation of this product is complex, Cambium therefore recommends professional installation and management of the system to ensure that operation complies with the regulations of the region where the product is installed. Follow the instructions in this leaflet. Further guidance on installation and operation is available in the product user guide. See weblinks.

The installer must have sufficient skills, knowledge and experience to perform the installation task and is responsible for:

- Familiarity with current applicable national regulations including radio regulations, electrical installation regulations and surge protection regulations.
- Installation in accordance with Cambium Networks instructions.
- Confirming that the equipment settings are compliant with national or regional regulations.

Observe the following important instructions during installation. This will set the equipment in compliance with national regulatory regulations:

- Ensure that XE-Series equipment is fitted with the latest firmware version. The software is available from the Cambium Networks Support Centre website.
- During equipment set-up, verify that the correct region code is set (the region code is pre-set in the factory for EU products) and then select the correct country code for the particular country where the product is being deployed.

Changes or modifications not expressly approved by Cambium Networks could void the user's authority to operate the equipment and will void the manufacturer's warranty.

Product safety information

Observe the following safety rules:

- Always power down and unplug the equipment before servicing. The power supply is the primary disconnect device. There are no serviceable parts inside this equipment.
- Always turn off the power to the XE-Series device before undertaking maintenance activities in front of the antenna.

- Observe the minimum safe distance limit for XE-Series products provided below.
- Ensure that equipment is installed in a position avoiding any radiation hazard.
- It is the user's responsibility to install the equipment in accordance with national regulations. It is recommended that installation be contracted to a professional installer.
- Always use the specified XE-Series platform power supply units (PSU) to power the equipment. Failure to use the specified Cambium supplied PSU could result in equipment damage and may cause a safety hazard.
- Connecting to a different power source to that specified on the equipment label may result in improper operation, damage to equipment or pose a fire hazard.
- Always install Cambium recommended cables.
 - Use a power cord with an integral safety ground wire intended for connection to a grounded safety outlet
 - Protective bonding must be installed in accordance with local national wiring rules and regulations
- The indoor unit enclosure may be hot to the touch when in operation.
- Please contact your local supplier to get more information about the power supply/adaptor.
- If a Class I PoE adapter or switch is used to provided power, be sure that the power cord is firmly plugged into the socket and confirm the main earth connection.
- This product is intended to be supplied by a UL Listed Power Adapter or DC power source marked "L.P.S" (or "Limited Power Source"), rated 42.5~57Vdc, 1.25A Gigabit Passive PoE injector, 802.3af/at/bt, Tma=50 degree C.

Operation in the USA

This device complies with Part 15 of the FCC Rules. Operation is subject to the following two conditions:

1. This device may not cause harmful interference, and
 2. This device must accept any interference received, including interference that may cause undesired operation.
- For the product available in the USA market, only channels from 1 to 11 for the 2.4 GHz band can be operated. Selection of other channels is not possible. This device is restricted to indoor use.

Important note

Federal Communication Commission Interference Statement :

This equipment complies with FCC radiation exposure limits set forth for an uncontrolled environment. This equipment should be installed and operated with a minimum distance of 75 cm (29.52 inches) between the radiator and your body. This equipment has been tested and found to comply with the limits for a Class B digital device, pursuant to Part 15 of the FCC Rules. These limits are designed to provide reasonable protection against harmful interference in a residential installation. This equipment generates, uses and can radiates radio frequency energy and, if not installed and used in accordance with the instructions, it may cause harmful interference to radio communications. However, there is no guarantee that interference will not occur in a particular installation. If this equipment does cause harmful interference to radio or television reception, which can be determined by turning the equipment off, and on. The user is encouraged to try to correct the interference by using one of the following measures:

- Reorient or relocate the device.
- Increase the separation between the equipment and receiver.
- Connect the equipment into an outlet on a circuit different from that, which the receiver is connected.
- Consult the dealer or an experienced radio/TV technician for help.

FCC Caution: Any changes or modifications are not expressly approved by the party responsible for compliance could void the user's authority to operate this equipment.

This device complies with Part 15 of the FCC Rules. Operation is subject to the following two conditions: (1) This device may not cause harmful interference, and (2) this device must accept any interference received, including interference that may cause undesired operation.

FCC regulations restrict the operation of this device to indoor use only. The operation of this device is prohibited on oil platforms, cars, trains, boats, and aircraft, except that operation of this device is permitted in the large aircraft while flying above 10,000 feet. Operation of transmitters in the 5.925 – 7.125 GHz band is prohibited for control of or Communications with unmanned aircraft systems.

Professional installation is required.

FCC Radiation Exposure Statement:

This equipment complies with FCC radiation exposure limits set forth for an uncontrolled environment. This equipment should be installed and operated with minimum distance 75cm between the radiator and your body.

Operation in Canada

IC Statement

This device contains licence-exempt transmitter(s)/receiver(s) that comply with Innovation, Science and Economic Development Canada's licence-exempt RSS(s). The operation is subject to the following two conditions: (1) This device may not cause interference. (2) This device must accept any interference, including interference that may cause undesired operation of the device.

The device for operation in the band 5150–5250 MHz is only for indoor use to reduce the potential for harmful interference to cochannel mobile satellite systems.

Important note

IC Radiation Exposure Statement:

This equipment complies with IC RSS-102 radiation exposure limits set forth for an uncontrolled environment. This equipment should be installed and operated with minimum distance 39cm between the radiator and your body.

Operation in the EU

Frequency bands, maximum operating power, safe distance

In the EU, the 2.4/5/6 GHz tri band XE-Series products operates in the following frequency bands up to the maximum power:

Operating frequency band	EU standard	Maximum power limit (EIRP)	Permitted usage	Units that support this frequency band
2401 – 2483 MHz	EN 300 328	100 mW / 20 dBm	Available for general usage within all EU nations	All XV \ XE Series
5150 – 5350 MHz	EN 301 893	200 mW / 23 dBm		All XV \ XE Series
5470 – 5725 MHz	EN 301 893	1W / 30 dBm		All XV \ XE Series
5945 – 6425 MHz	EN 303 687	200 mW / 23 dBm		All XE Series

For XE-Series products deployed in the EU, the minimum safe distance between the equipment and humans is 20 cm.

Restrictions and requirements for authorization for use

- This equipment is for Indoor use only.
- The XE-Series products can be configured to operate in unlicensed frequency bands subject to frequency planning within individual countries. Operators / End users must ensure that the equipment is installed and operated in accordance with the regulations applicable to the country of operation.
- Use only with Power Supply L.P.S 42.5-57Vdc, 1.25A Gigabit Passive PoE injector, 802.3af/at PSE.

Simplified EU Declaration of Conformity

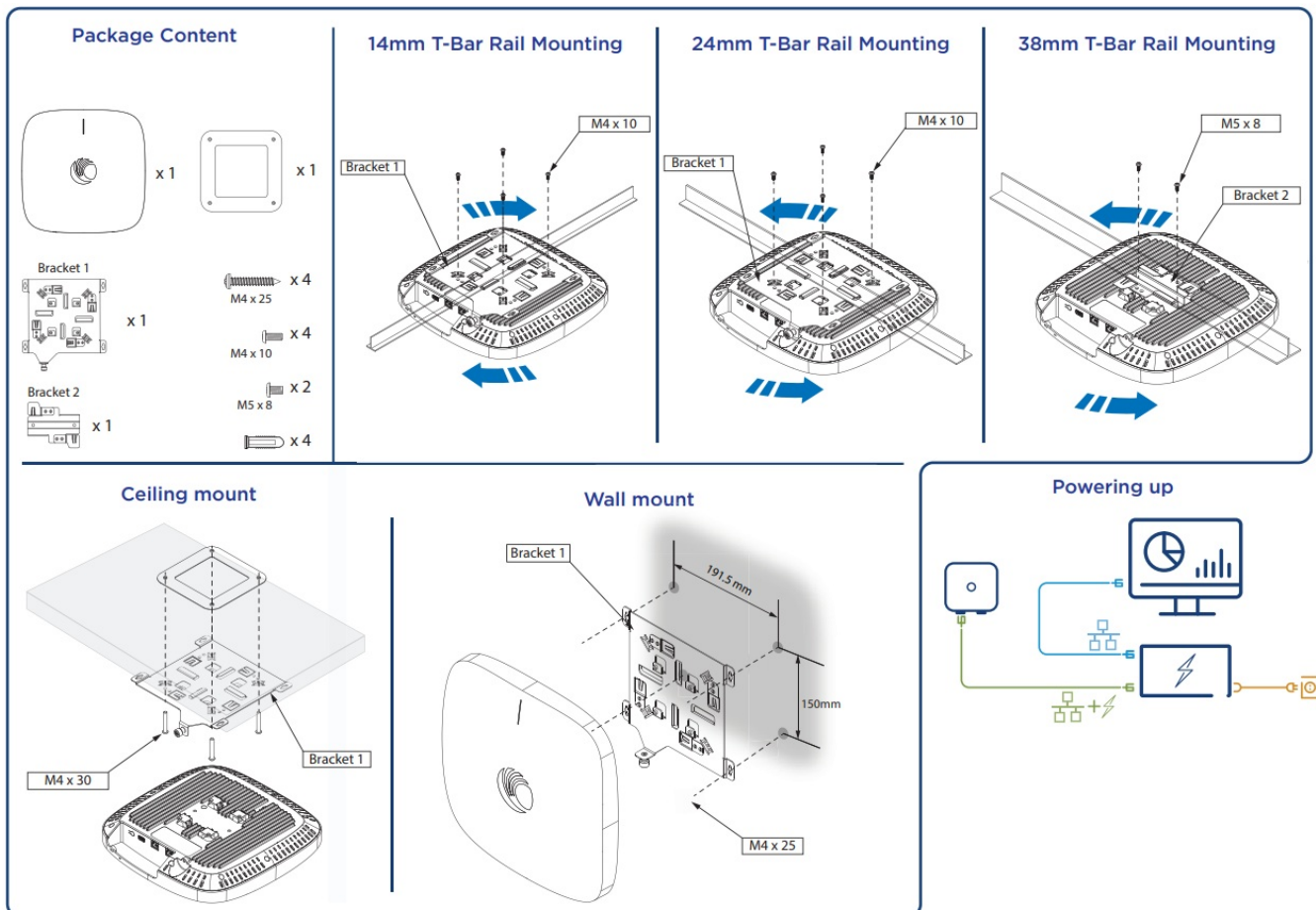
Hereby, the manufacturer Cambium Networks Ltd, declares that the radio equipment type XE5-8 is in compliance with Directive 2014/53/EU. The full text of the EU declaration of conformity is available at the following internet address: http://www.cambiumnetworks.com/eu_dofc

Waste Electrical and Electronic Equipment (WEEE) Directive



■ Please do not dispose of Electronic and Electric Equipment or Electronic and Electric Accessories with your household waste. In some countries or regions, collection systems have been set up to handle waste of electrical and electronic equipment. In European Union countries, please contact your local equipment supplier representative or Cambium Networks Support Centre for information about the waste collection system in your country.

Connecting what matters





<https://apple.co/36FohDP>



<https://play.google.com/store/apps/details?id=com.cambiumnetworks.sv>

Install Guide



<https://www.cambiumnetworks.com/qrcode/xe58/>

DHCP/192.168.0.1
<http://1192.168.0.1>
admin/admin

XMS-Cloud

1. Copy the Entitlement ID (EID) sent via email, then go to: cambiumnetworks.com > **Licensing > Activate Entitlements.**

New Customers: Create an account and login using the credentials that is sent by email.

Existing Customers: Enter EID to activate licenses for new APs.

2. Open XMS-Cloud UI and add AP serial numbers: xirrus.com > Access Point tab.
3. Connect AP to the internet. It appears in the XMS-Cloud console in a few minutes.

Swift Mobile App

1. Download the **Cambium Networks Swift** app from the Google Play Store or Apple App Store.
2. Open Swift app and follow the onscreen instructions. **cnMaestro Essentials and cnMaestro X**
3. Go to: cambiumnetworks.com and register as a new user or sign-in with the existing credentials.
4. Create a new cnMaestro account or select an existing account.
5. **To** add AP serial numbers: Go to cnMaestro Home > Onboard Devices > Claim Device.
6. Connect the AP to the internet. It appears in the cnMaestro Devices page in a few minutes. Approve the device to finish onboarding.

cnMaestro On-Premises

Consult user documentation to redirect the AP to an on-premises cnMaestro management server.

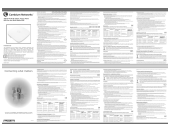


<https://support.cambiumnetworks.com>



P021186v2

Documents / Resources

	Cambium Networks E1722 EX5-8 Wifi 6E Indoor Access Point [pdf] User Manual E1722 EX5-8 Wifi 6E Indoor Access Point, E1722, EX5-8 Wifi 6E Indoor Access Point, Indoor Access Point, Access Point
---	--