



calibrite X-Rite Color Checker Display User Guide

[Home](#) » [calibrite](#) » calibrite X-Rite Color Checker Display User Guide 

Contents

- 1 [calibrite X-Rite Color Checker Display](#)
- 2 [Important Notices](#)
- 3 [Package Contents](#)
- 4 [Installation](#)
- 5 [Overview](#)
- 6 [Monitor measurement](#)
- 7 [Ambient light measurement](#)
- 8 [Projector Measurement](#)
- 9 [Warranty Conditions](#)
- 10 [Care, Support, & Service](#)
- 11 [CONTACT](#)
- 12 [Documents / Resources](#)
 - 12.1 [References](#)



calibrite X-Rite Color Checker Display



Important Notices

CE DECLARATION: Hereby, X-Rite, Incorporated, declares that this device is in compliance with the essential requirements and other relevant provisions of Directives 2014/35/EU (LVD), 2014/30/EU (EMC), and RoHS 2015/863.

Calibrite is a registered trademark of Calibrite LLC. X-Rite is a registered trademark of X-Rite Incorporated. All rights reserved

FEDERAL COMMUNICATIONS COMMISSION NOTICE

NOTE: This equipment has been tested and found to comply with the limits for a Class B digital device, pursuant to Part 15 of the FCC Rules. These limits are designed to provide reasonable protection against harmful interference in a residential installation. This equipment generates, uses and can radiate radio frequency energy and, if not installed and used in accordance with the instructions, may cause harmful interference to radio communications. However, there is no guarantee that interference will not occur in a particular installation. If this equipment does cause harmful interference to radio or television reception, which can be determined by turning the equipment off and on, the user is encouraged to try to correct the interference by one or more of the following measures:

- Reorient or relocate the receiving antenna.
- Increase the separation between the equipment and receiver.
- Connect the equipment into an outlet on a circuit different from that to which the receiver is connected.
- Consult the dealer or an experienced radio/TV technician for help.

INDUSTRY CANADA COMPLIANCE STATEMENT

- CAN ICES-003 (B) / NMB-003 (B)

EQUIPMENT INFORMATION

- Use of this equipment in a manner other than that specified by Calibrite LLC may compromise design integrity

and become unsafe.

- If this product is used in a manner not specified by the instruction, the safety protection provided by the device may be impaired or become inoperable.
- Unauthorized dismantling of the device will void all warranty claims.

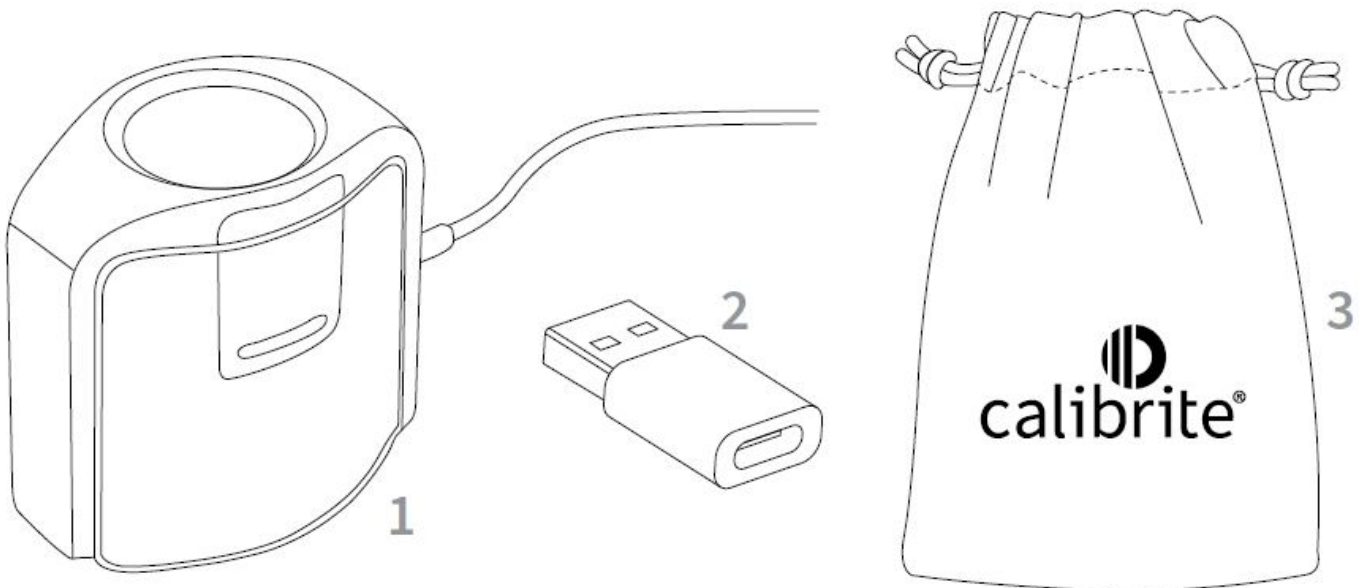
WARNING: This instrument is not for use in explosive environments.

Instructions for disposal: Please dispose of Waste Electrical and Electronic Equipment (WEEE) at designated collection points for the recycling of such equipment.



Package Contents

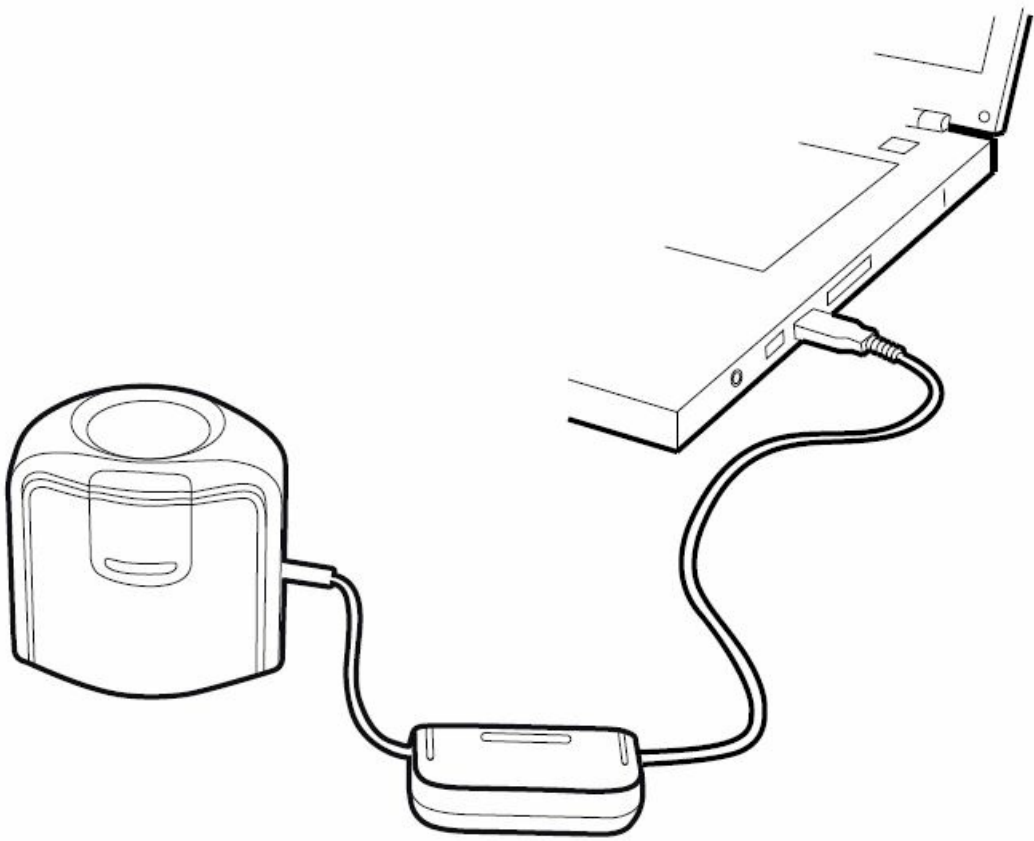
1. Calibrite Display
2. USB-C to USB-A Adapter
3. Calibrite Pouch



Installation

Before you can use your device, you will need to install the software application onto your computer. Please do not plug in the instrument USB cable to your computer until after you have installed the software application.

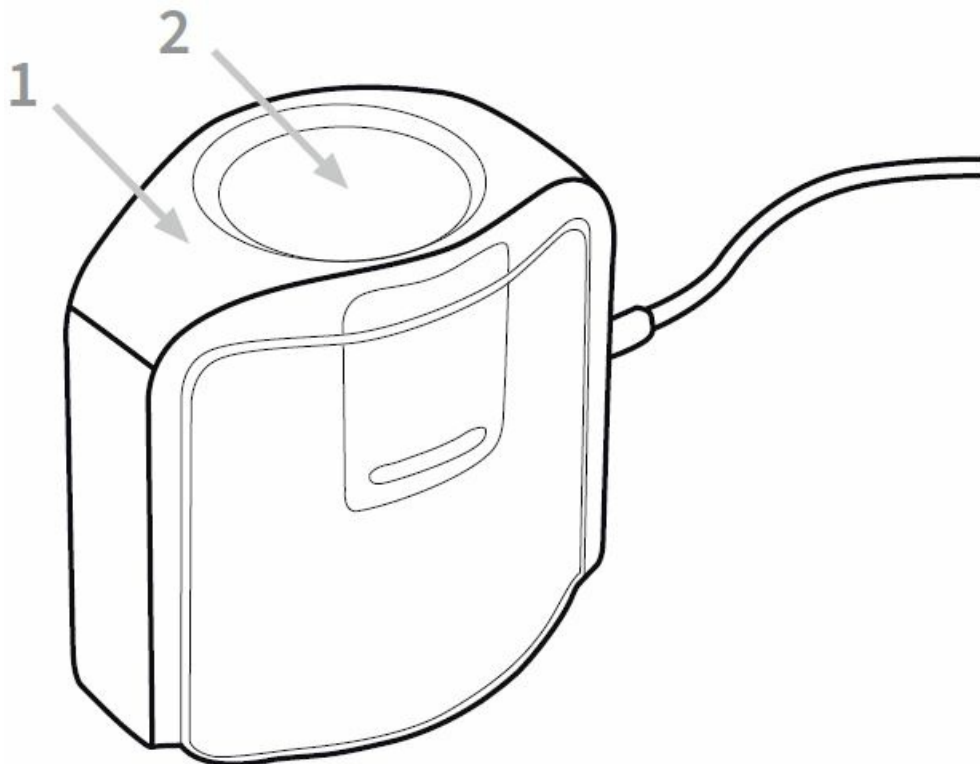
1. For all Calibrite Display devices, visit www.calibrite.com/downloads to download the Calibrite PROFILER application and install the software application on your computer.
2. Review all of the instructions in this Quick Start Guide before you start using your new device. For more detailed information, please visit www.calibrite.com.



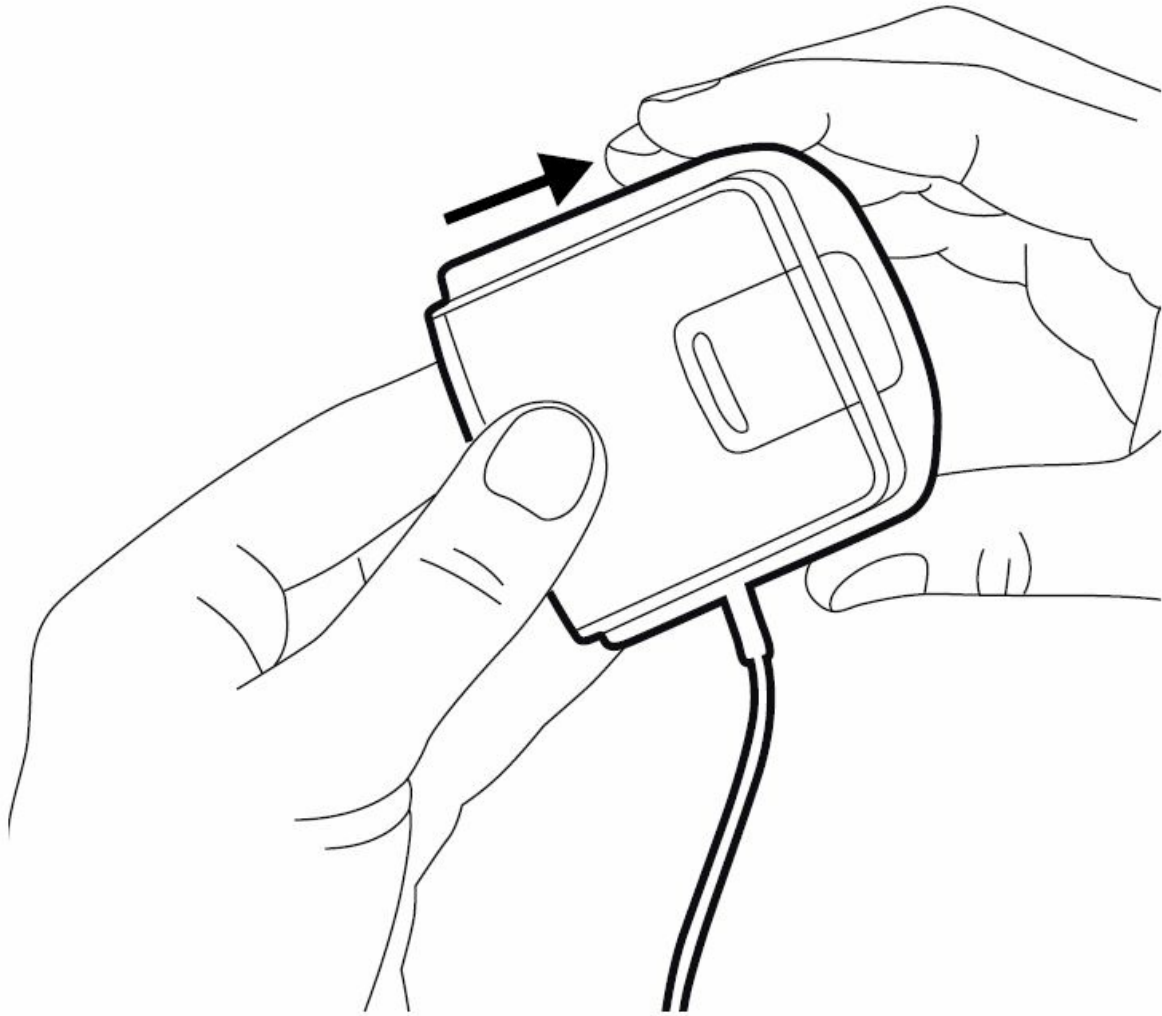
After you have completed the software installation process, attach the device to your computer's USB-C port.
NOTE: Please use the USB-C to USB-A adapter, if your computer does not have an available USB-C port.

Overview

1. Ambient Diffuser Arm.
2. Ambient Diffuser

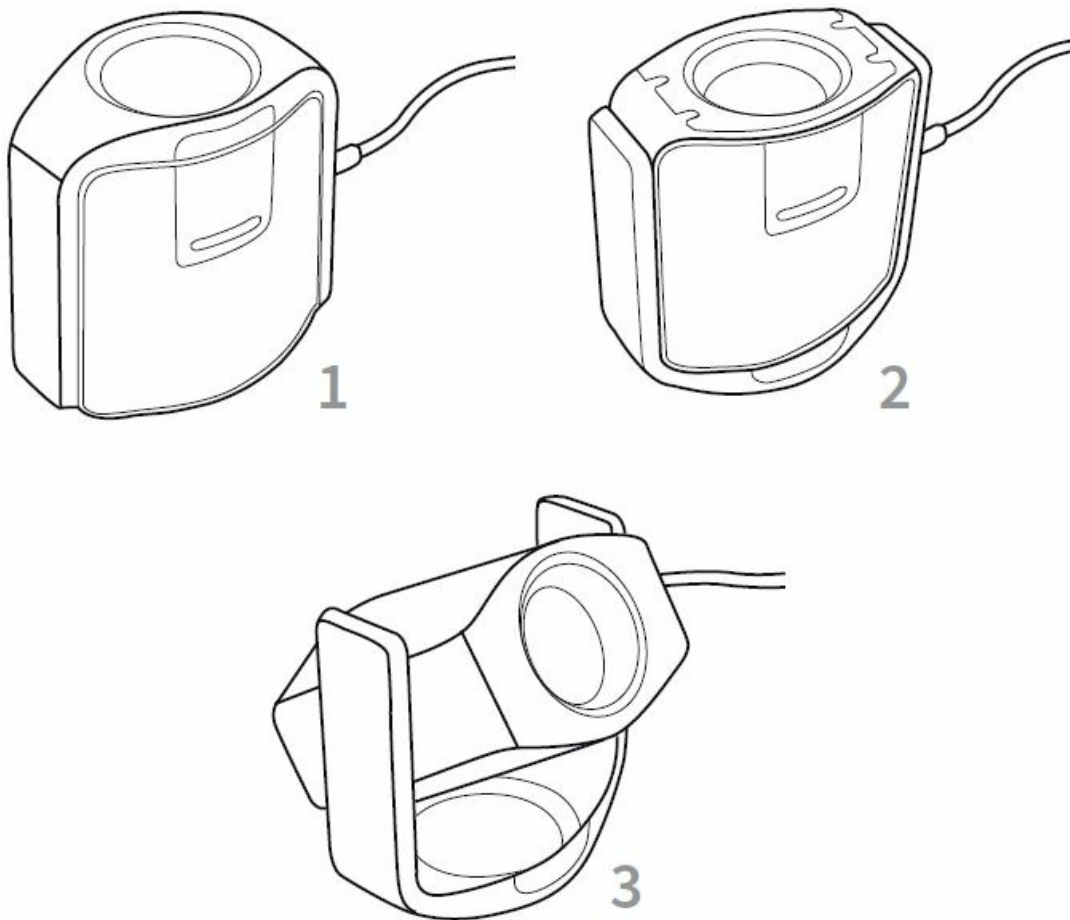


- Ambient diffuser arm snaps into place over measurement optics.
- Be sure to lift up on ambient diffuser arm before attempting to rotate into different measurement positions.



Measuring Modes

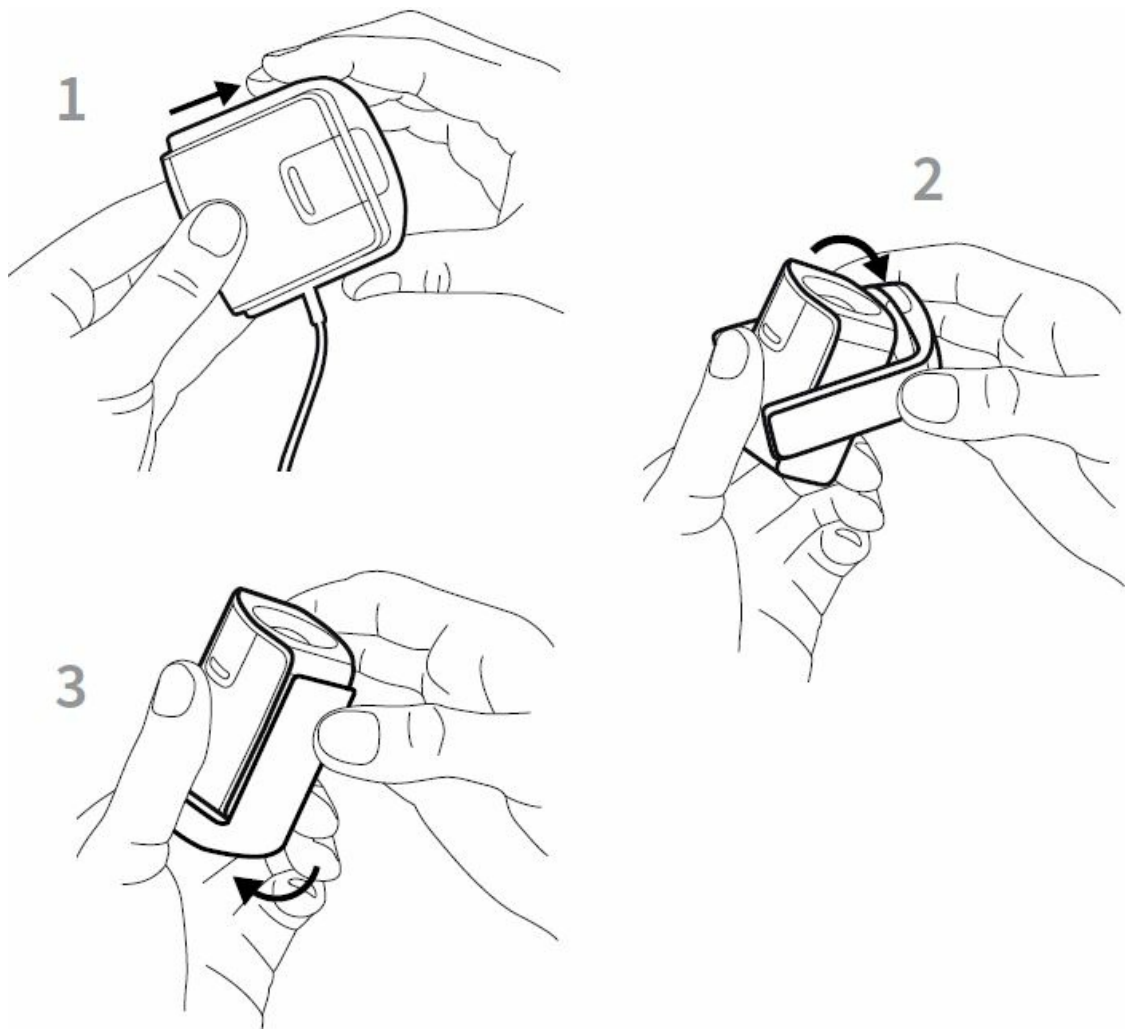
1. Ambient Light Measurement
2. Emissive Light Measurement
3. Projector Measurement



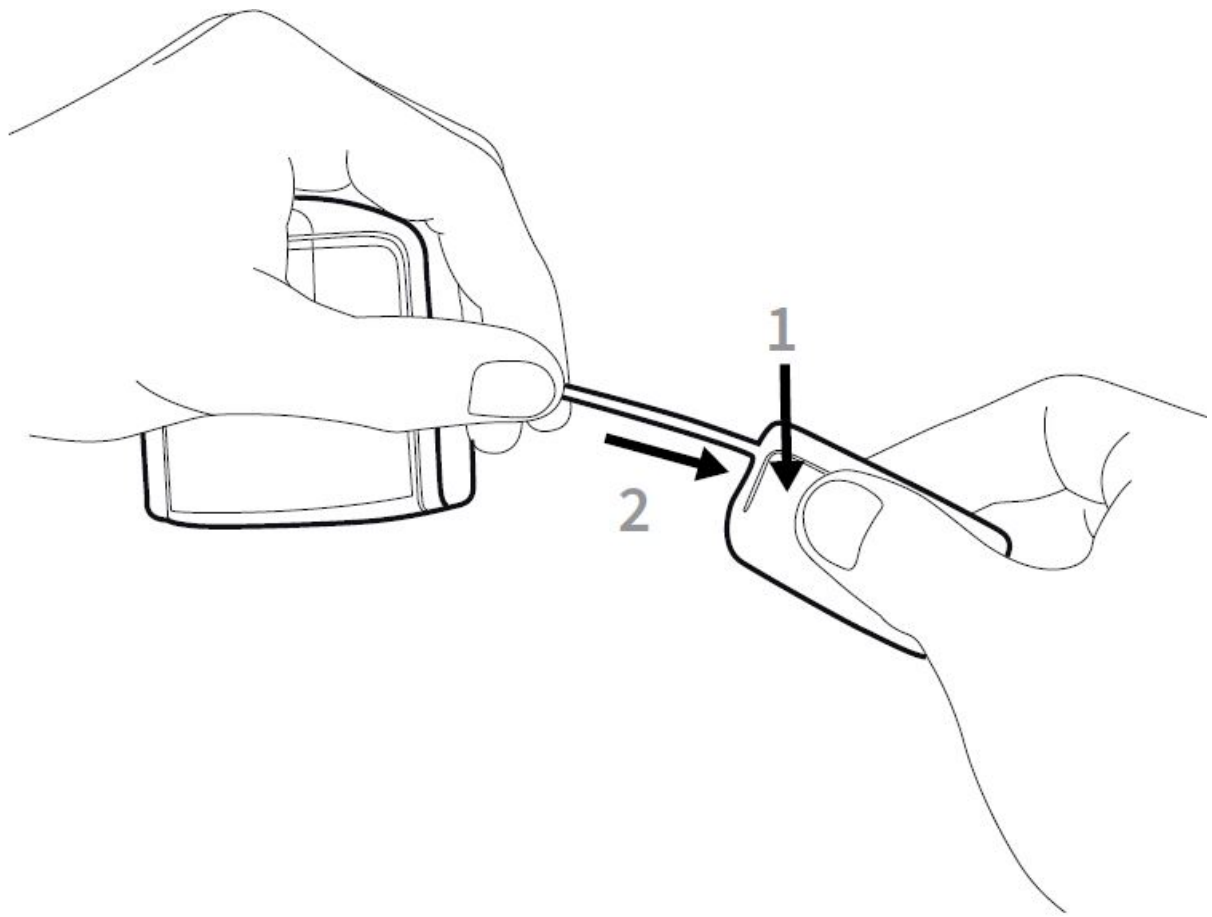
Monitor measurement

For display measurements

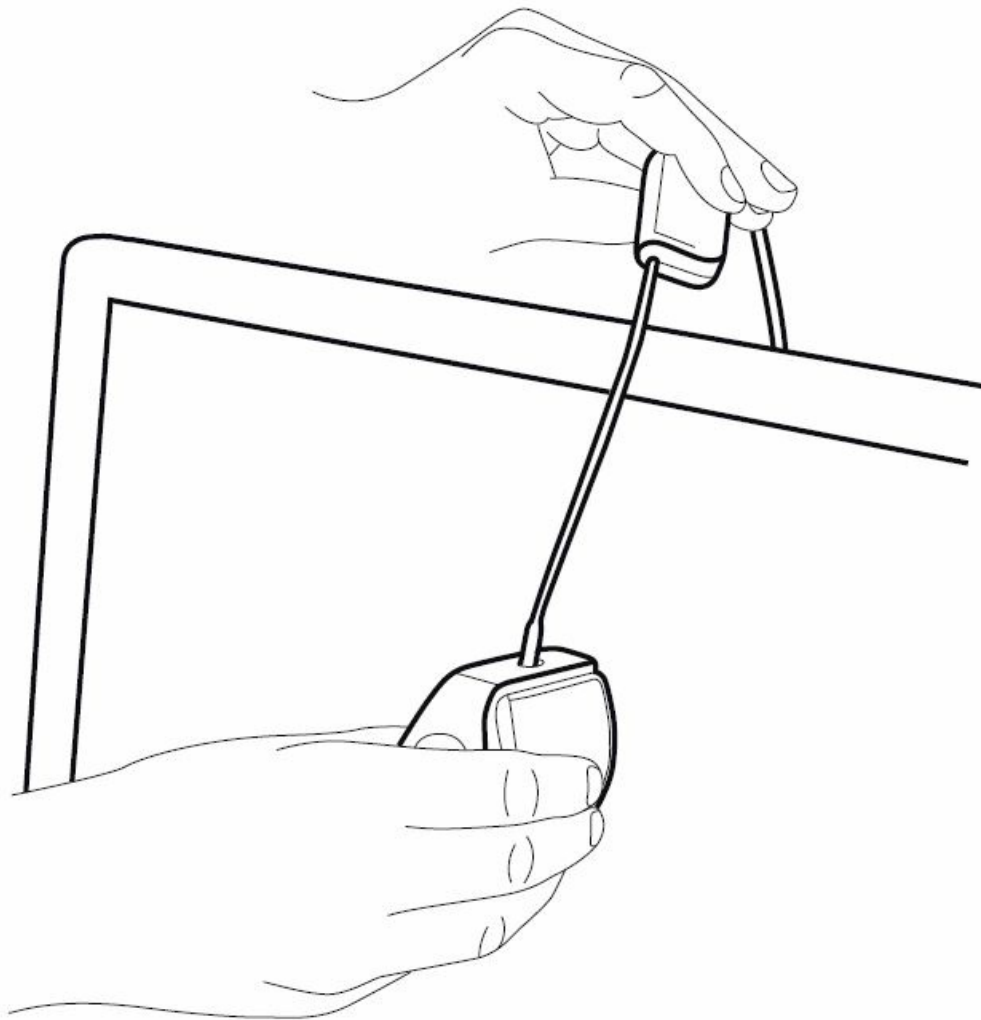
1. Lift up on ambient diffuser arm.
2. Rotate ambient diffuser arm to rear position.
3. Ambient diffuser arm will snap into place when located in rear position.



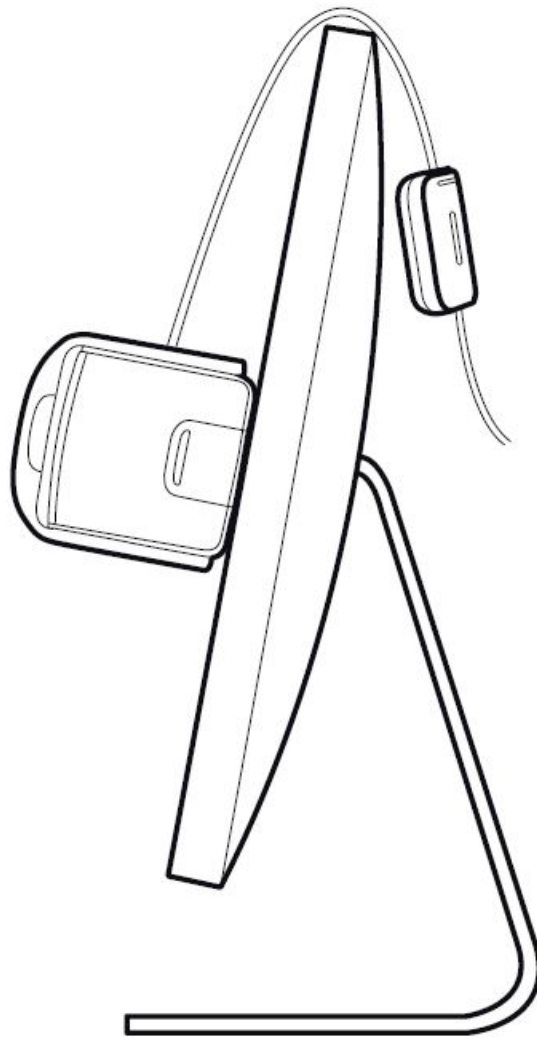
- To adjust the position of the counter weight, depress the button on the counter weight and slide counter weight simultaneously to desired location.



- To mount the device on your display, position the optics in contact with the center of your display.
- Then position the USB cable and counter weight behind your display.



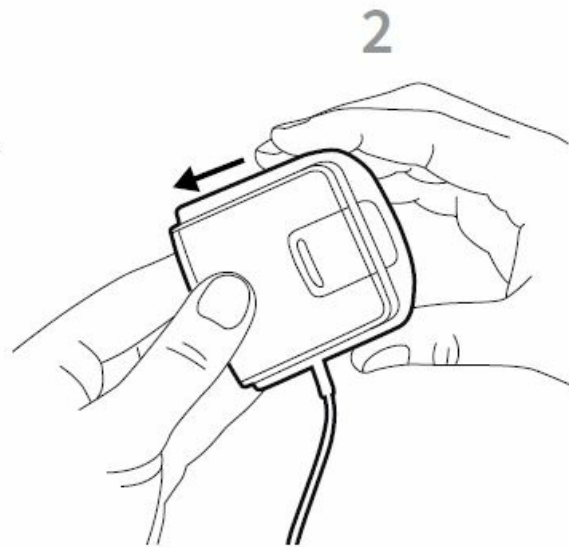
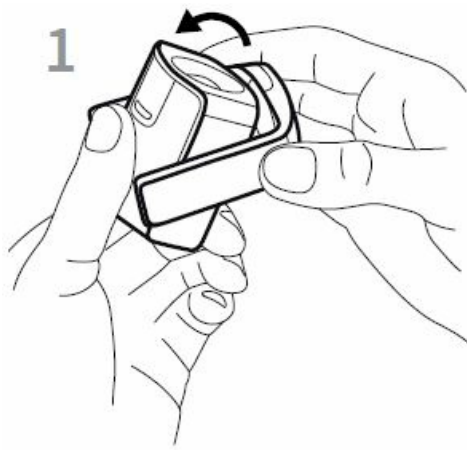
- Adjust the position of the counter weight according to the size of your display.
- Be sure the foam pad on the front of the device sits flat on your display.



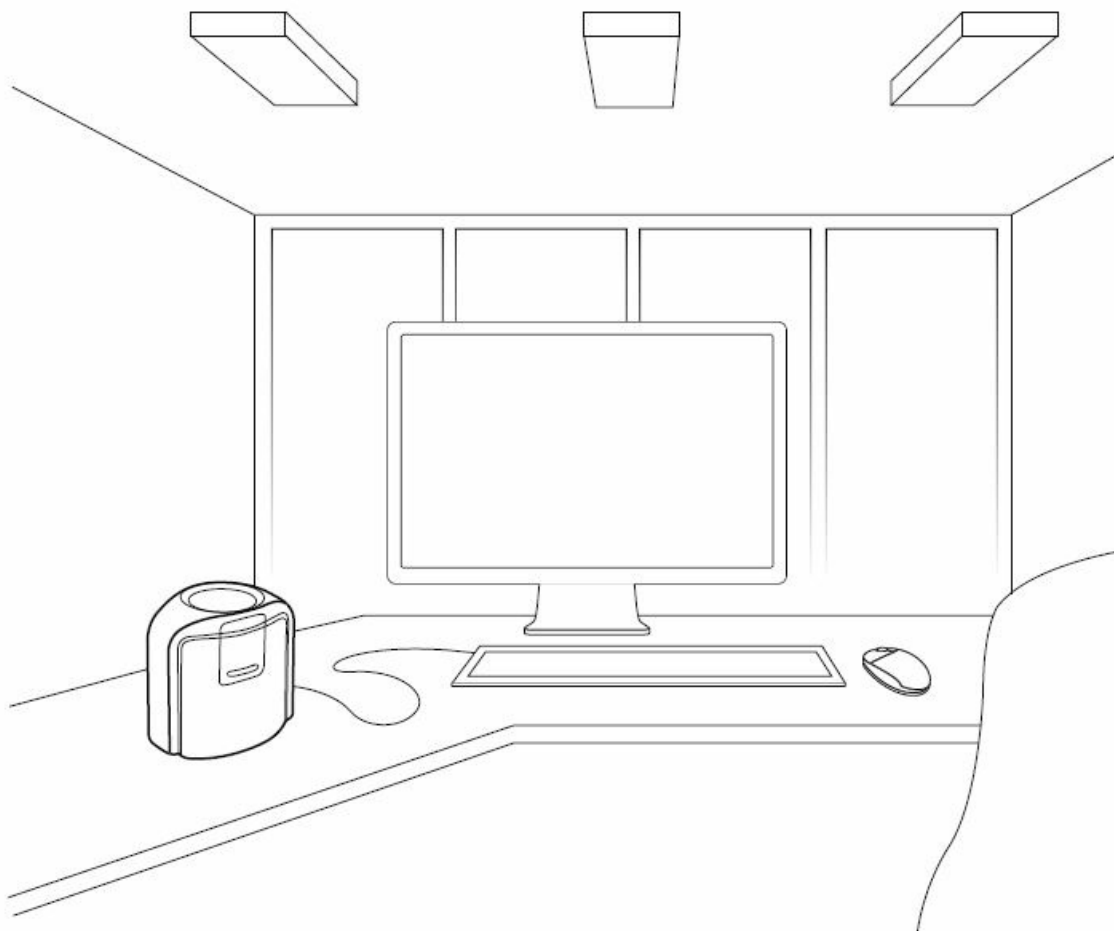
Ambient light measurement

For ambient light measurements

1. Rotate the ambient diffuser arm until the diffuser is positioned over the optics.
2. Press down on the ambient diffuser arm until it snaps into place over the optics.



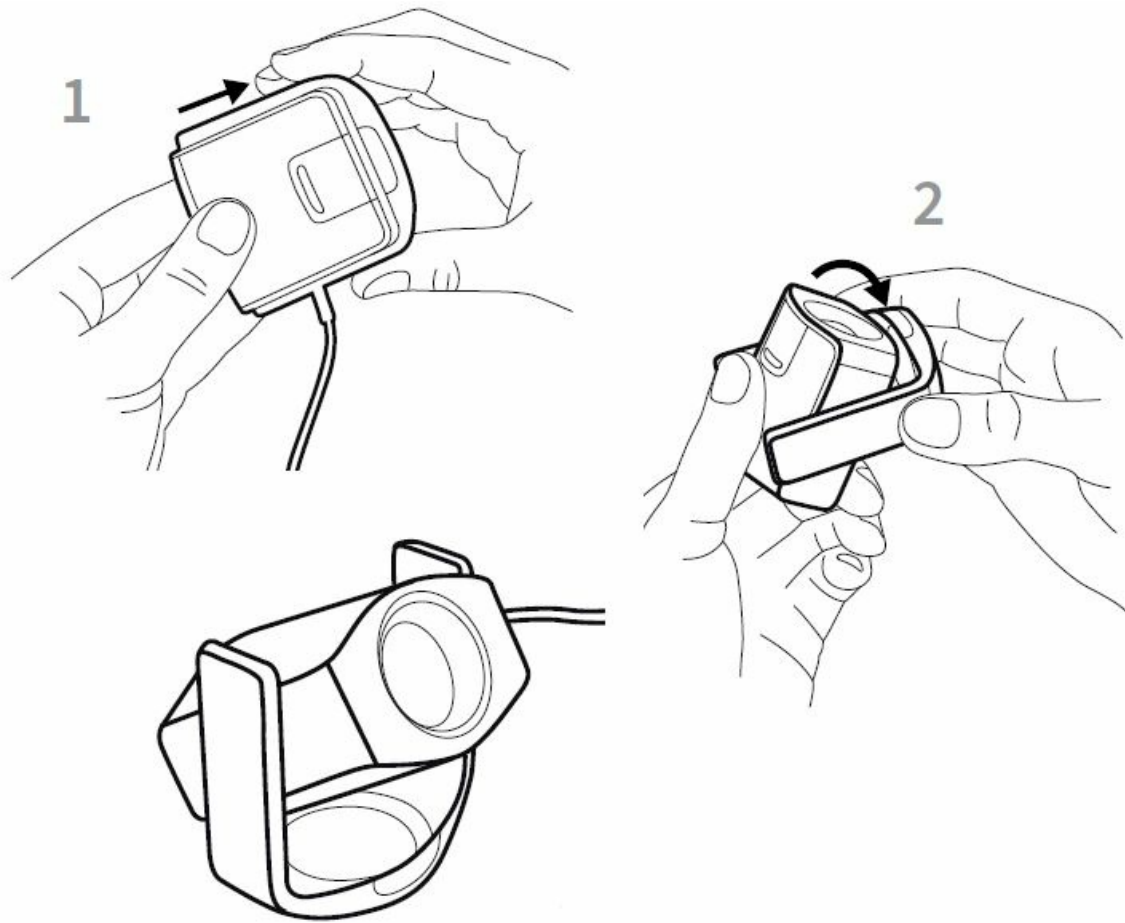
- Position the device on your work surface next to your display with ambient diffuser pointing upwards.



For projector measurements

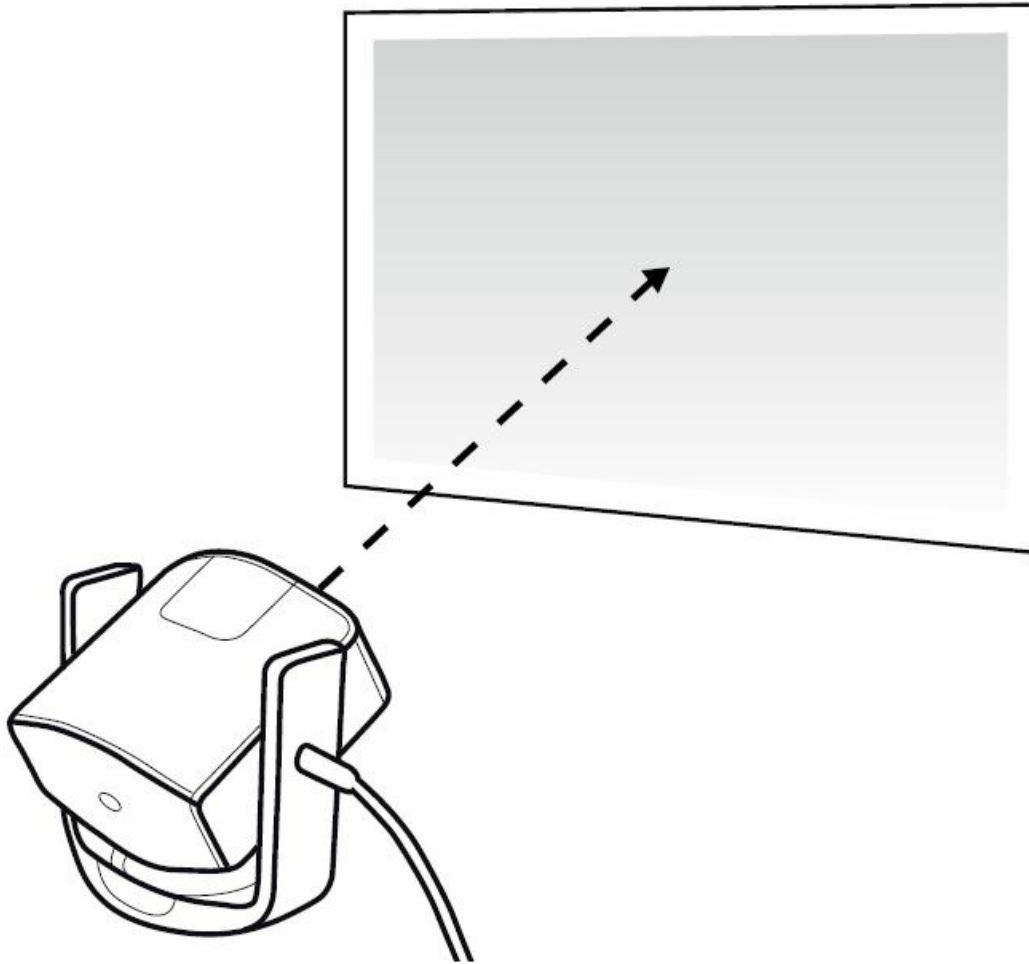
1. Lift up on ambient diffuser arm.
2. Rotate ambient diffuser arm halfway towards rear position.

3. Use the ambient diffuser arm as a stand for the device and position the device on a table in front the projector screen. (A threaded tripod mount is also available on the bottom of the device for use with a tripod.)



Projector Measurement

- Rotate the device up or down and pivot left or right until the device optics are pointing towards the center on the projector screen.



Warranty Conditions

X-Rite warrants this product against defects in material and workmanship for a period of twelve (12) months from the date of sale, unless different local regulations apply. During the warranty period, X-Rite will either replace or repair at its discretion defective parts free of charge.

This warranty shall not apply to any goods supplied hereunder which after shipment are damaged, altered in any respect, or subjected to negligent treatment. X-Rite's sole and exclusive obligation for breach of the above warranties shall be the repair or replacement of any part, without charge, which within the warranty period is proven to X-Rite's reasonable satisfaction to have been defective. Repairs or replacement by X-Rite shall not revive an otherwise expired warranty, nor shall the same extend the duration of a warranty. X-Rite shall in no event be liable for losses or costs to Buyer in manufacturing, or for Buyer's overhead, other expenses, lost profits, goodwill, or any other special, indirect, consequential, incidental or other damages to people or property resulting from a breach of any of the foregoing warranties. There are no other warranties, either express or implied, which extend beyond the warranties set forth herein. The express warranties contained herein are in lieu of all other warranties, express or implied, including, but not limited warranty or merchantability and fitness for a particular purpose or application. No representations, conversations or statements not expressly set forth herein shall be binding upon X-Rite as a warranty, guarantee or any other form of assurance. To obtain warranty service, you must take the product, or deliver the product freight prepaid, in either its original packaging or packaging affording an equal degree of protection, to an authorized Calibrite service center. Proof of purchase in the form of a bill of sale or receipted invoice which is evidence that the unit is within the Warranty period must be presented to obtain warranty service.

Care, Support, & Service

Care

Keep the ambient diffuser in place over the optics when not in use. The ambient diffuser will prevent dust or dirt from accumulating on the lens.

If cleaning is needed, first use a lens blower brush to remove loose dust. If necessary, wipe the lens gently with a soft lint free cloth.

NOTE – Never use water, solvents, or detergents to clean the lens or body of the device, as these may cause damage or deformation.

Always use and store the device between 10° C to 35° C at 20% to 80% relative humidity (non-condensing).

Service

Do not try to dismantle the device for any reason. Unauthorized dismantling of the equipment will void all warranty claims. Contact Calibrite support or the nearest Service Center, if you believe that the unit does not work anymore or does not work correctly.


Service Center

Visit www.calibrite.com to locate the nearest Service Center or contact your Calibrite dealer for more information.

CONTACT

- Corporate Headquarters
- Calibrite LLC., 1013 Centre Rd, Suite 403S, Wilmington DE 19805, USA [calibrite.com](http://www.calibrite.com).
- Please visit www.calibrite.com for a local office near you.
- Part No. CCDISSL, CCDIS3HL & CCDIS3PLHL (7/2023)

Documents / Resources

	calibrite X-Rite Color Checker Display [pdf] User Guide X-Rite Color Checker Display, X-Rite, Color Checker Display, Checker Display, Display
---	--

References

- [Welcome to Calibrite](#)
- [Welcome to Calibrite](#)
- [Software Downloads - Calibrite - United States](#)
- [Welcome to Calibrite](#)
- [Calibrite - Technischer Support - Calibrite - Germany](#)
- [Software Downloads - Calibrite - Germany](#)
- [Software Downloads - Calibrite - United States](#)
- [Welcome to Calibrite](#)
- [Calibrite Technical Support - Calibrite - Spain](#)
- [Software Downloads - Calibrite - Spain](#)
- [Welcome to Calibrite](#)
- [Software Downloads - Calibrite - France](#)
- [Welcome to Calibrite](#)
- [Calibrite Technical Support - Calibrite - Italy](#)
- [Software Downloads - Calibrite - Italy](#)
- [Welcome to Calibrite](#)

- [!\[\]\(fd4127b9e2af37bd6ea0fa06afa8e6d8_img.jpg\) **Calibrite** - Calibrite - Japan](#)
- [!\[\]\(3278d6283d12f18012b5aa7d40747611_img.jpg\) - Calibrite - Japan](#)
- [!\[\]\(bb96b32142ec45f72f12316beae3ef61_img.jpg\) **Welcome to Calibrite**](#)
- [!\[\]\(a75d0d7d1ac0ea815a0c027a77b137d5_img.jpg\) **Calibrite Technical Support - Calibrite - Poland**](#)
- [!\[\]\(adab168ecea4e2ae40993afba3fcd26e_img.jpg\) **Software Downloads - Calibrite - Poland**](#)
- [!\[\]\(e95ea1a0e297340f96c3d715d76d8c23_img.jpg\) **Welcome to Calibrite**](#)
- [!\[\]\(0e0cdd76cf8fb3c858658faf72d7f324_img.jpg\) **Calibrite Technical Support - Calibrite - United States**](#)
- [!\[\]\(c7bdebfc2a52eab4f6683b0c1c0c28d2_img.jpg\) **Software Downloads - Calibrite - United States**](#)
- [**User Manual**](#)

Manuals+, Privacy Policy

This website is an independent publication and is neither affiliated with nor endorsed by any of the trademark owners. The "Bluetooth®" word mark and logos are registered trademarks owned by Bluetooth SIG, Inc. The "Wi-Fi®" word mark and logos are registered trademarks owned by the Wi-Fi Alliance. Any use of these marks on this website does not imply any affiliation with or endorsement.