



# CALIBER HWC 102PT User Manual

[Home](#) » [CALIBER](#) » CALIBER HWC 102PT User Manual 

## CALIBER HWC 102PT User Manual



### Contents

- [1 BUTTON AND CONNECTION](#)
- [2 INSTALLATION INSTRUCTIONS](#)
  - [2.1 Wifi Configuration instructions](#)
- [3 SPECIFICATIONS](#)
- [4 PRODUCT DESCRIPTION](#)
- [5 FEATURES](#)
- [6 Documents / Resources](#)
- [7 Related Posts](#)

## BUTTON AND CONNECTION



#### 1. **Micro SD slot**

For Micro SD card, to be able to record (max. 128GB)

#### 2. **Reset button**

To reset to factory settings

#### 3. **Built-in microphone**

- To listen while live view or using the intercom
- To record audio

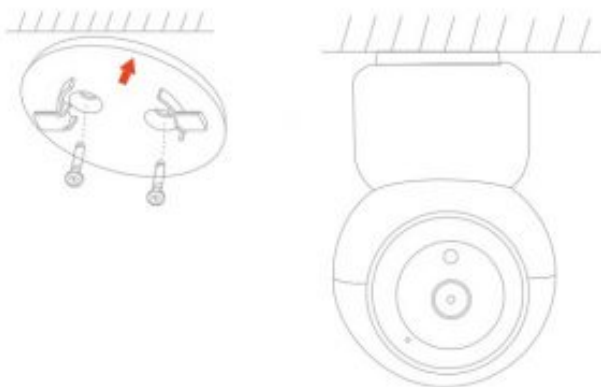
#### 4. **Built-in speaker**

For talk back in 2-way intercom function

#### 5. **DC input**

5V/1A Micro USB input

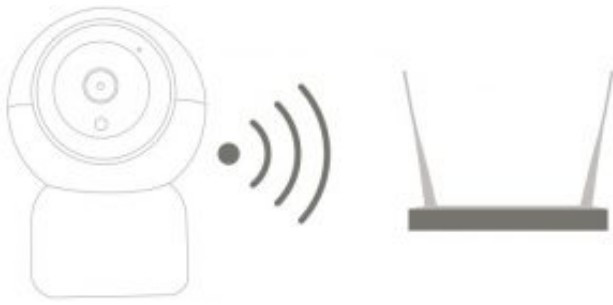
#### **Optional mounting**



Using the mounting plate the HWC102PT can also be mounted on a wall or ceiling (video image can be adjusted/flipped)

## **INSTALLATION INSTRUCTIONS**

**Warning:** Make sure the camera to be within range of the Wi-Fi network to ensure a successful connection between the camera and router.



### Wifi Configuration instructions

1. Scan QR code to download and install Caliber Smart Home



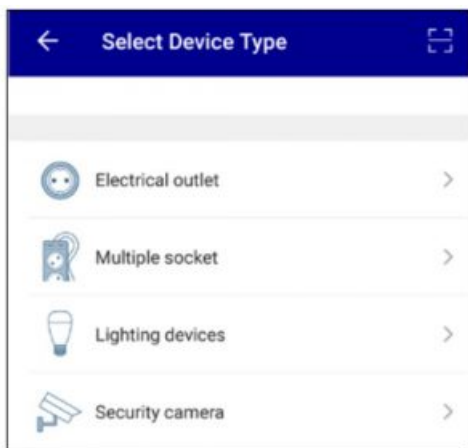
2. Sign in with cell phone number or Email

A screenshot of the app's registration screen. At the top is a blue header bar with a white back arrow and the word "Register". Below this is a form with a "Region" label and a dropdown menu showing "Netherlands +31" with a chevron. Underneath is a text input field labeled "Mobile Number/E-mail". At the bottom is a grey button labeled "Next".

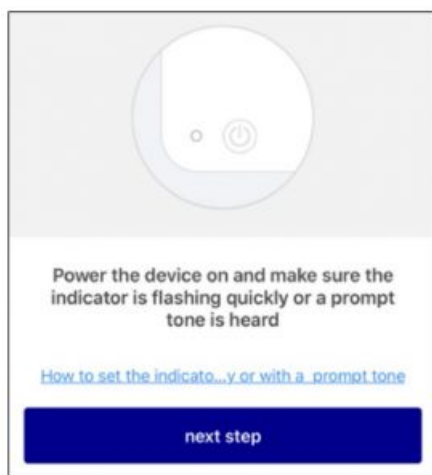
3. Make sure the device on which the app is installed, is connected to the Wifi network on which you want the camera to be too.

Once the camera is plugged in it will be powered ON and the indication LED will flash rapidly or a sound/voiceprompt will be heard.

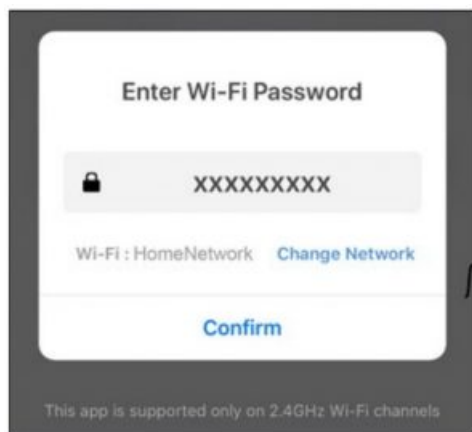
4. Click + at the top right corner to select and add the device.



5. The APP will ask if the indication LED is flashing or if the startup tone was heard. Then click “next step”. If this is not the case, please reset the camera holding the reset-button for approx 10 seconds.



6. Check if the Wi-Fi network is correct, fill in the corresponding password and confirm. Note that the password can only contain letters and numbers, no special characters.



## SPECIFICATIONS

Image sensor	1/4inch 1080p CMOS sensor
Lens/viewing angle	:335° V:110°

Night vision	IR LED's 6pcs 0 5.0mm 5-10M				
Compression Format	H.264 Main Profile				
Max. Frame rate	1-25fps				
Audio	Two way talkback function				
Network Protocol	HTTP, DHCP, DNS				
WIFI	Fi802.11b/g/n req range: 2402-2480 Mhz x e.r.p: <100mW/20dBm				
Storage mode	local storage / client storage				
Interface	Micro SD/TF, pport up to 128GB SD				
Pan-Tilt	0-355° /-10-75°				
motion detection	port motion detection				
Power input	DC5V/1A				
Working environment	Working Temperature -20-50°C				
Installation	<table border="1"> <tr> <td colspan="2">Standing or wall/ceiling using</td></tr> <tr> <td>mounting plate</td><td></td></tr> </table>	Standing or wall/ceiling using		mounting plate	
Standing or wall/ceiling using					
mounting plate					

## PRODUCT DESCRIPTION

The camera is a Wi-Fi based item. You can either control it with Android and IOS based APP by phone, anywhere, at any time.

## FEATURES


- Works with Amazon Alexa by voice control
- Product works on Echo Show and Google Cast
- Remote view and control via APP anywhere anytime
- Scene control: works with other smart products
- CITA upgrade supported
- Motion detection recording
- Object tracking

We are continuously improving/updating our products and product Information. Its therefore possible that there is a slight difference between the description in this manual to the operation of the product. If something is different or not clear; always check our website for the most current version.

The (app) images and illustrations used are indicative and may vary per device and version.

**Latest declaration form can be found at: [DeclarationHWC102PT](#) [PDF]**

## Documents / Resources

	<a href="#">CALIBER HWC 102PT</a> [pdf] User Manual HWC 102PT
---	--