

CALEX
H O L L A N D

**4611913 Up and
Down Wand Lamp**



CALEX 4611913 Up and Down Wand Lamp Installation Guide

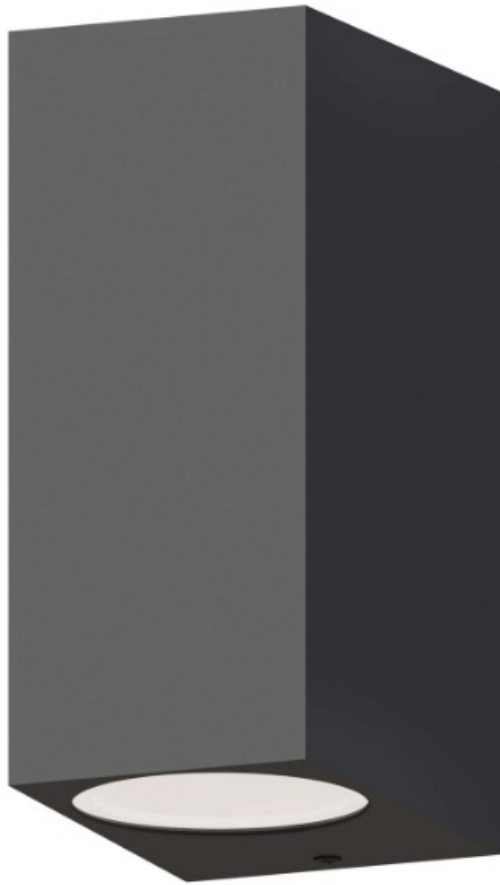
[Home](#) » [CALEX](#) » CALEX 4611913 Up and Down Wand Lamp Installation Guide 

Contents

- [1 CALEX 4611913 Up and Down Wand Lamp](#)
- [2 Product Information](#)
- [3 Parts Supplied](#)
- [4 Installation Instructions](#)
- [5 Specifications](#)
- [6 FAQ](#)
- [7 Documents / Resources](#)
 - [7.1 References](#)
- [8 Related Posts](#)

CALEX
H O L L A N D

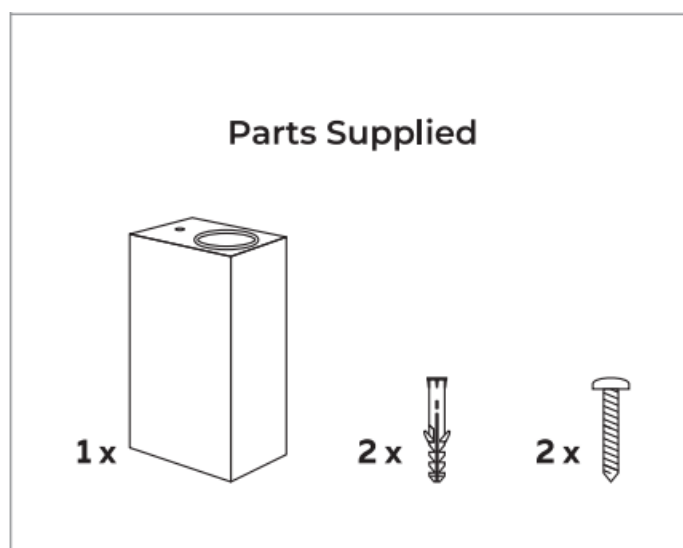
CALEX 4611913 Up and Down Wand Lamp



Product Information

- **Brand:** Calex
- **Company:** Electro Cirkel Retail B.V.
- **Address:** Lyonstraat 29, 3047 AJ Rotterdam, The Netherlands
- **Website:** www.calex.eu
- **Article Number:** 4301000800

Parts Supplied

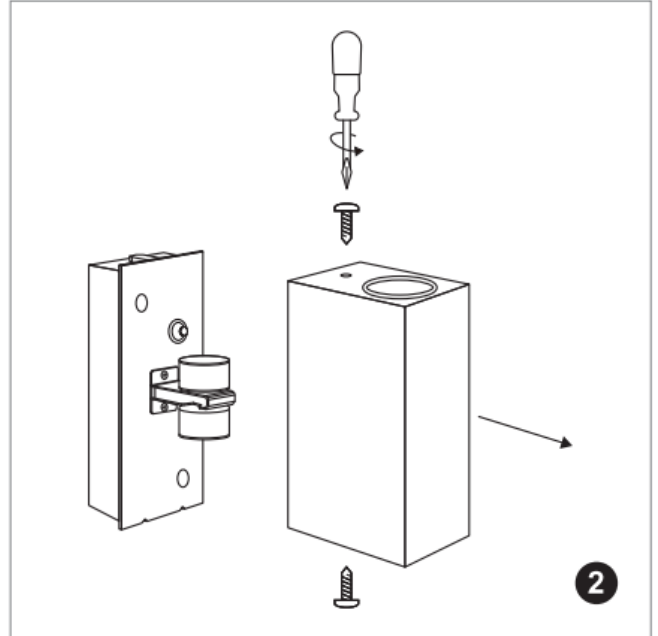
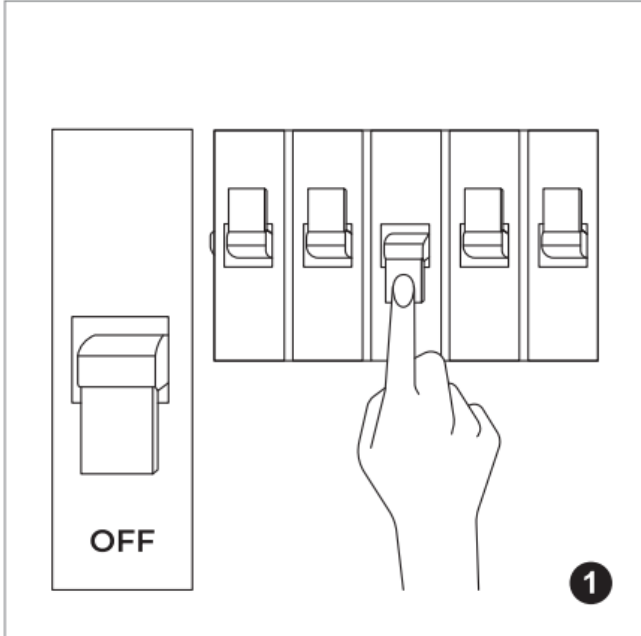


- 1 x Light Fixture

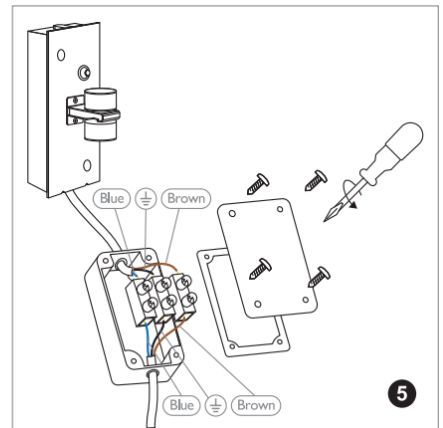
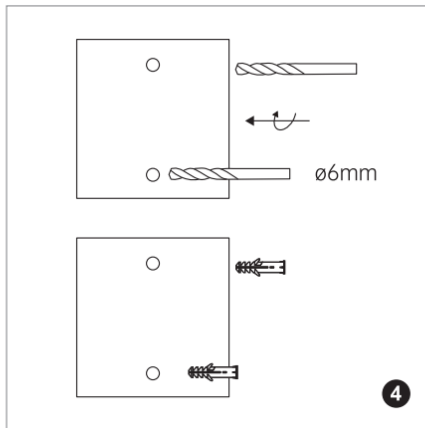
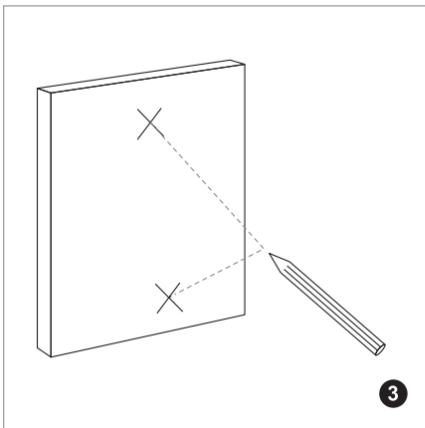
- 2 x Wall Plugs
- 2 x Screws

Installation Instructions

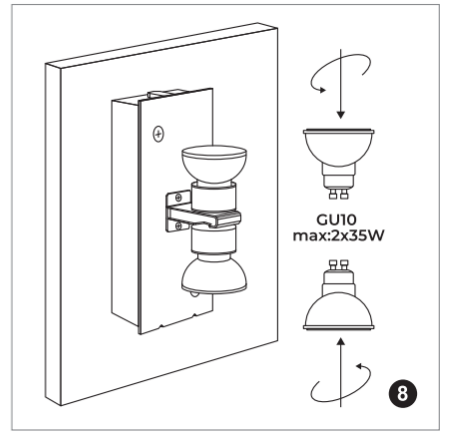
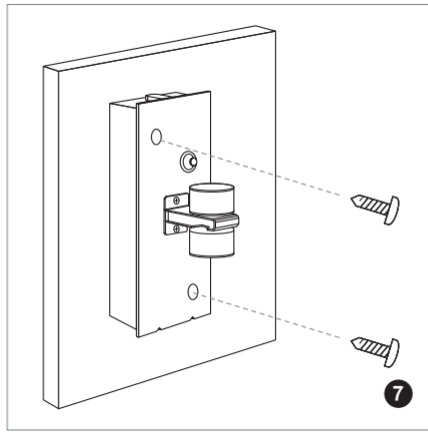
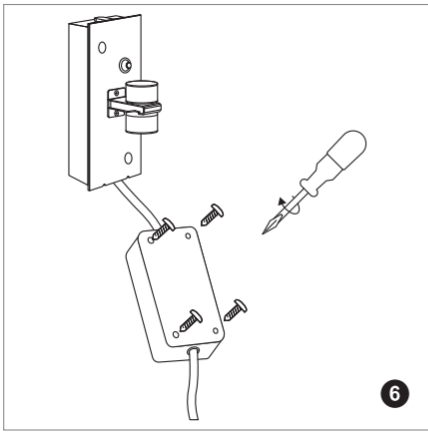
1. Turn off the power supply from the main switch.
2. Remove the screw from the light fixture and detach the mounting plate.



3. Mark the positions for drilling holes on the wall.
4. Drill holes (6mm diameter) at the marked positions and insert the wall plugs.
5. Connect the wires to the terminal block. Blue wire to 'N' and Brown wire to 'L'.



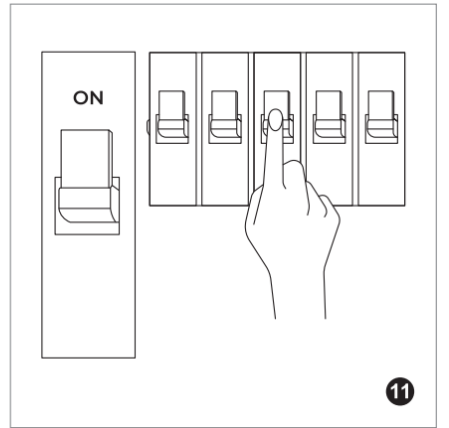
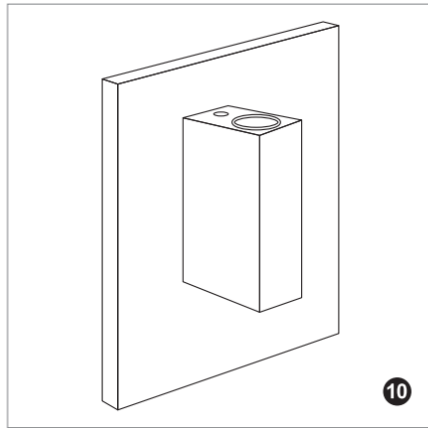
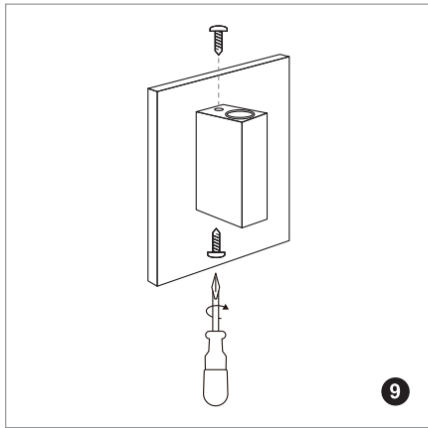
6. Attach the mounting plate to the wall using the screws provided.
7. Secure the light fixture to the mounting plate using the screw removed earlier.
8. Insert the GU10 bulb (max 2x35W) into the light fixture.



9. Secure the cover of the light fixture with the screw.

10. The light fixture should now be securely attached to the wall.

11. Turn on the power supply from the main switch.



Specifications

| Parameter | Details |
|---------------------|---------|
| Bulb Type | GU10 |
| Maximum Wattage | 2x35W |
| Drill Hole Diameter | 6mm |

FAQ

What is the maximum wattage for the bulbs?

The maximum wattage for the bulbs is 2x35W.

What size drill bit should I use for the wall plugs?

You should use a 6mm diameter drill bit for the wall plugs.

How do I connect the wires to the terminal block?

Connect the blue wire to the 'N' terminal and the brown wire to the 'L' terminal.

Is it necessary to turn off the power supply before installation?

Yes, it is necessary to turn off the power supply from the main switch before starting the installation.

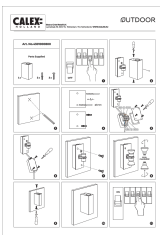
What type of bulb is compatible with this light fixture?

This light fixture is compatible with GU10 bulbs.

Electro Cirkel Retail B.V.

Lyonstraat 29, 3047 AJ Rotterdam, The Netherlands WWW.CALEX.EU

Documents / Resources

| | |
|---|---|
|  | <p>CALEX 4611913 Up and Down Wand Lamp [pdf] Installation Guide 4611913, 6e7a48b7, 4611913 Up and Down Wand Lamp, 4611913, Up and Down Wand Lamp, Down Wand Lamp, Wand Lamp, Lamp</p> |
|---|---|

References

- [User Manual](#)

Manuals+ Privacy Policy

This website is an independent publication and is neither affiliated with nor endorsed by any of the trademark owners. The "Bluetooth®" word mark and logos are registered trademarks owned by Bluetooth SIG, Inc. The "Wi-Fi®" word mark and logos are registered trademarks owned by the Wi-Fi Alliance. Any use of these marks on this website does not imply any affiliation with or endorsement.