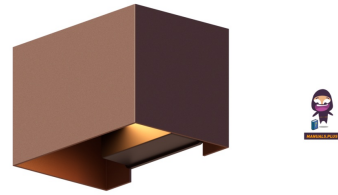


CALEX 4611908 LED Wall Lamp Rectangle Rust Color



CALEX 4611908 LED Wall Lamp Rectangle Rust Color Instruction Manual

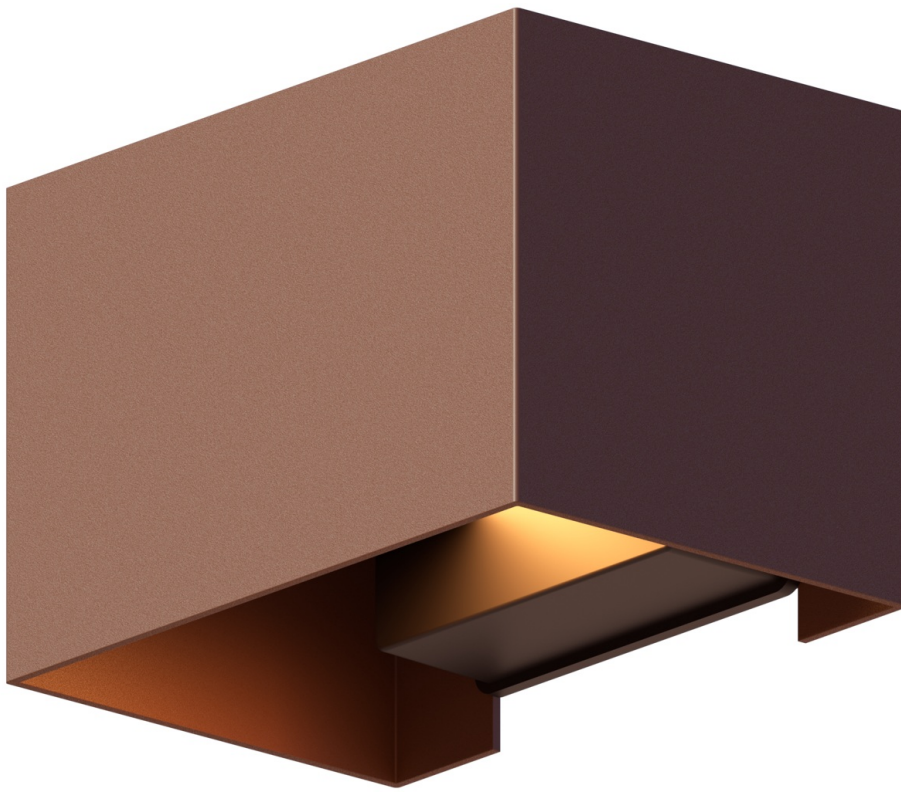
[Home](#) » [CALEX](#) » CALEX 4611908 LED Wall Lamp Rectangle Rust Color Instruction Manual 

Contents

- [1 CALEX 4611908 LED Wall Lamp Rectangle Rust Color](#)
- [2 Specifications](#)
- [3 Parts Supplied](#)
- [4 Installation Steps](#)
- [5 FAQs](#)
- [6 Documents / Resources](#)
 - [6.1 References](#)
- [7 Related Posts](#)



CALEX 4611908 LED Wall Lamp Rectangle Rust Color

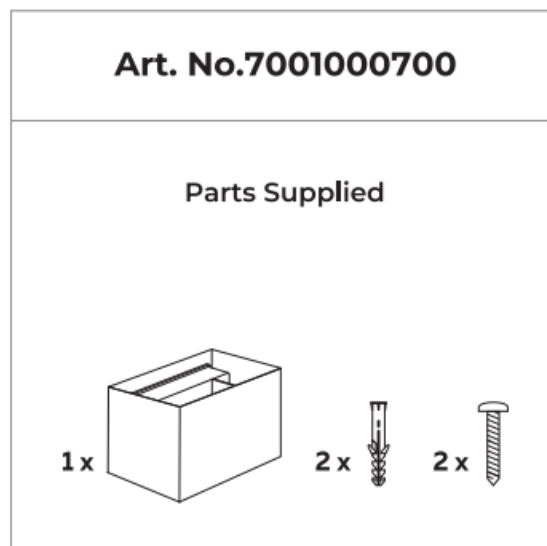


Specifications

- Electro Cirkel Retail B.V.
- Lyonstraat 29, 3047 AJ Rotterdam, The Netherlands
- **Website:** WWW.CALEX.EU
- **Art. No.** 7001000700

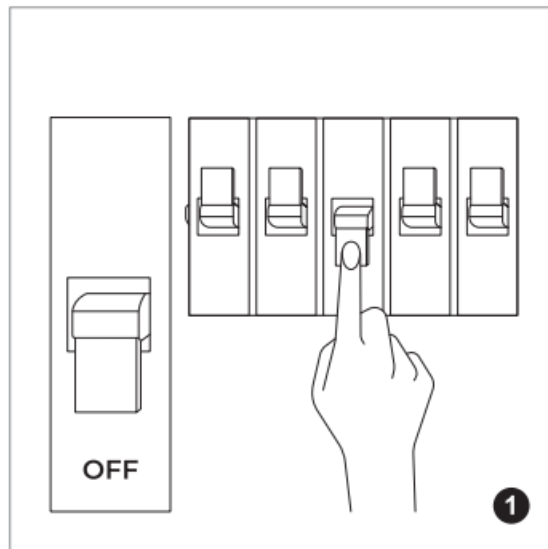
Parts Supplied

- 1x Outdoor light fixture box
- 2x Screws
- 2x Wall plugs

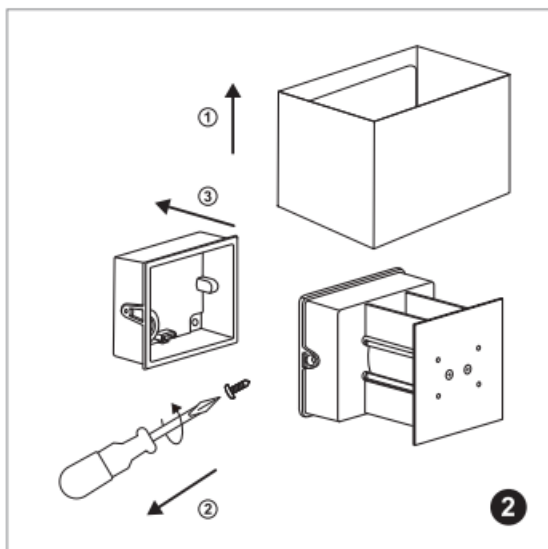


Installation Steps

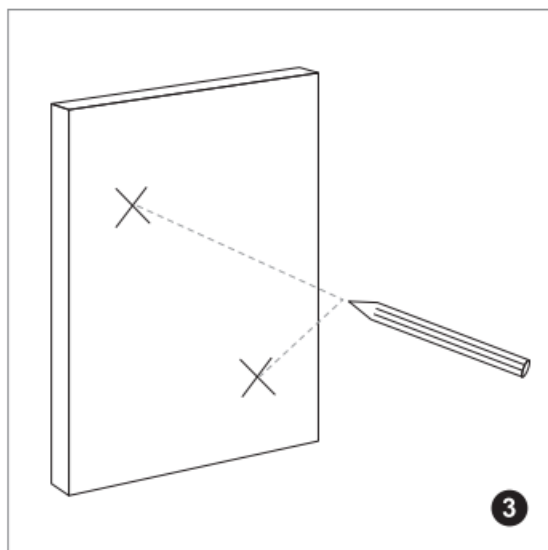
1. Ensure the power supply is turned off at the mains before installation.



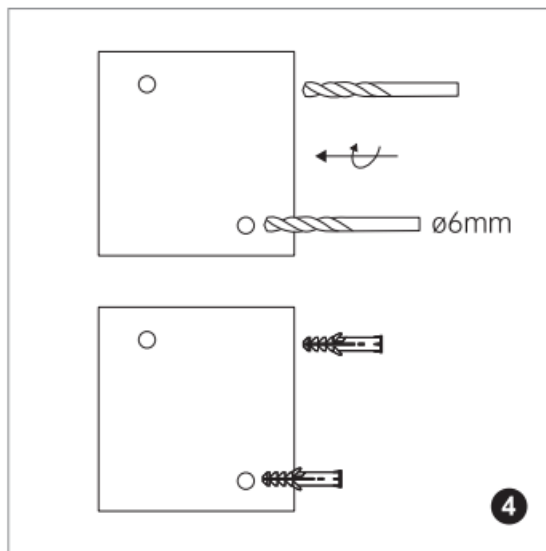
2. Prepare the outdoor light fixture box for mounting by unscrewing the lid.



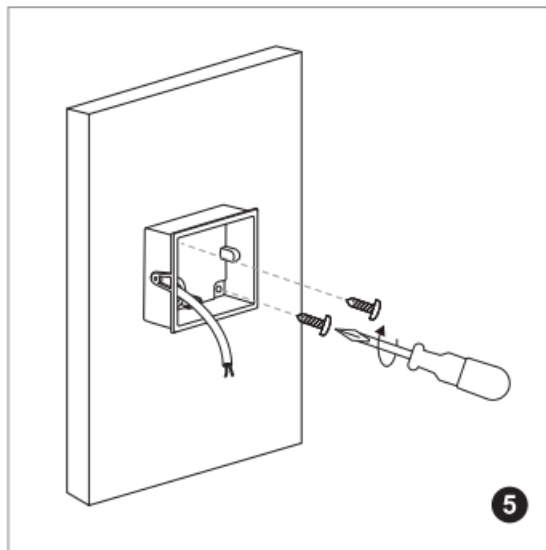
3. Use a drill to make holes in the wall where you wish to mount the fixture.



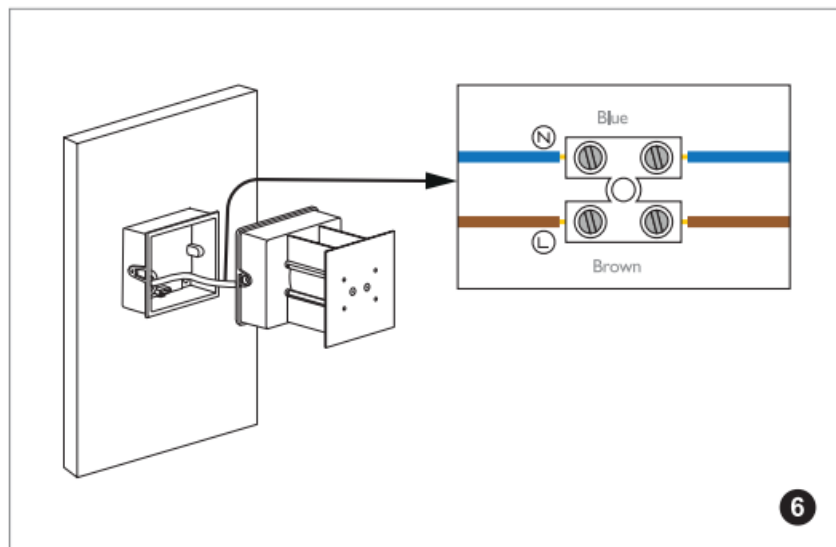
4. Drill holes should be 66mm apart to match the screw holes on the fixture.



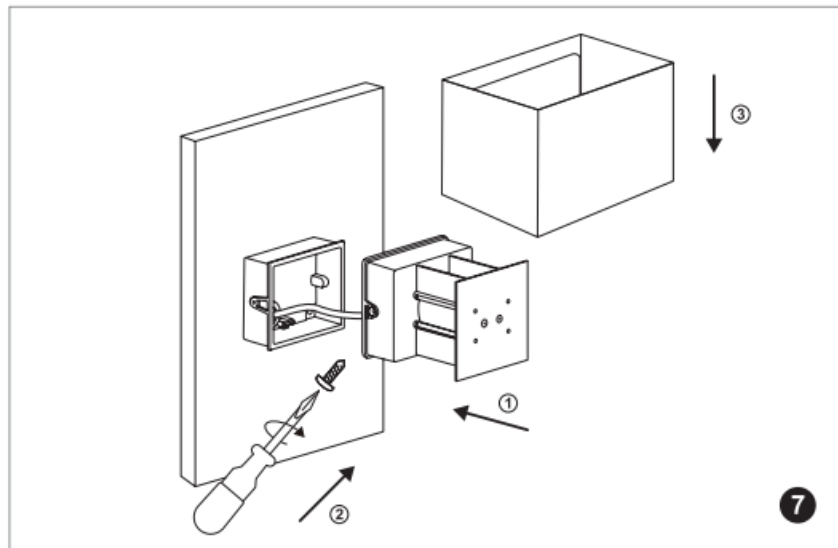
5. Secure the fixture's base to the wall using the provided screws and wall plugs.



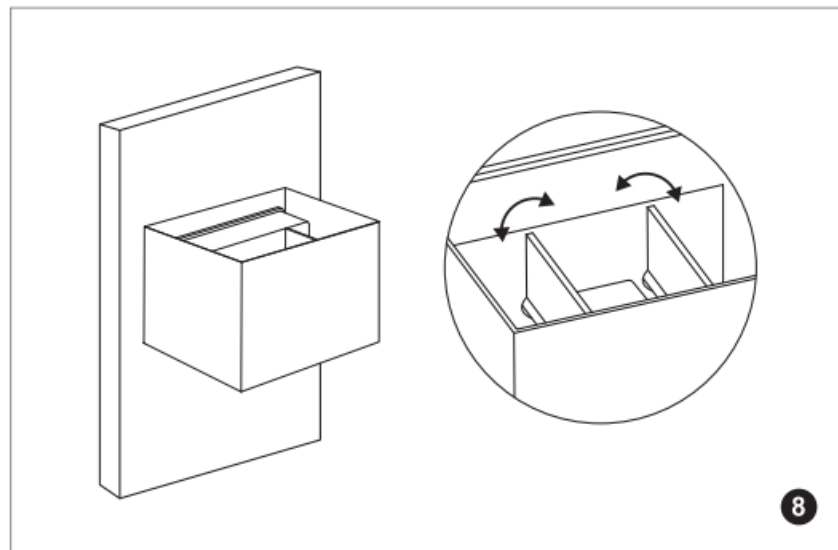
6. Connect the fixture's wiring to the mains power supply, matching the blue wire with the neutral connection and the brown wire with the live connection. Ensure all connections are secure.



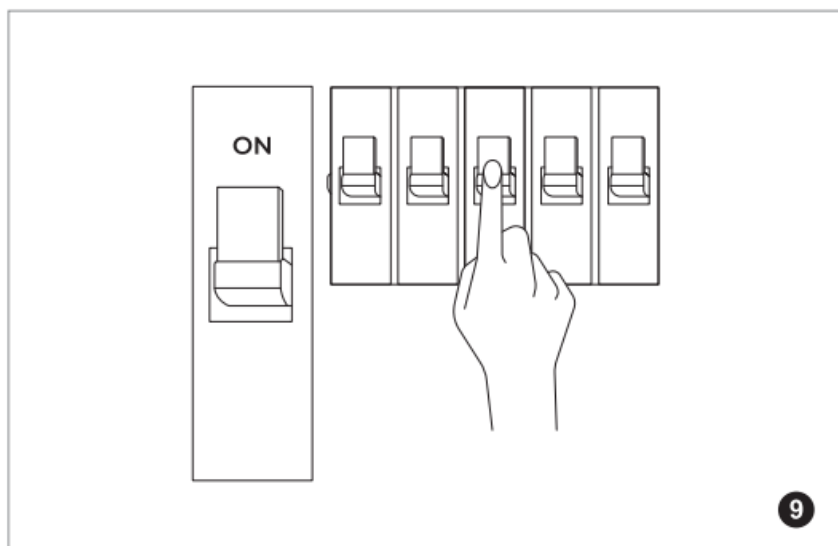
7. Place the light fixture's lid back onto the base and secure it with screws.



8. Adjust the light fixture's angle, if applicable, to the desired position.



9. Turn the power back on at the mains and switch on the light fixture to test its operation.



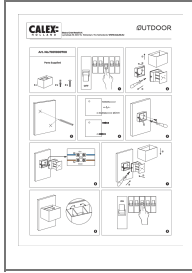
FAQs

- **What should I do before installation?**
 - Ensure the power supply is turned off at the mains before beginning the installation process.
- **How far apart should the drill holes be?**
 - The drill holes should be 66mm apart to align with the fixture's screw holes.

- **What are the colour codes for the wiring?**

- The blue wire is for the neutral connection, and the brown wire is for the live connection.

Documents / Resources



[CALEX 4611908 LED Wall Lamp Rectangle Rust Color](#) [pdf] Instruction Manual
4611908 LED Wall Lamp Rectangle Rust Color, LED Wall Lamp Rectangle Rust Color, Lamp Rectangle Rust Color, Rectangle Rust Color, Rust Color, Color

References

- [User Manual](#)

[Manuals+](#), [Privacy Policy](#)

This website is an independent publication and is neither affiliated with nor endorsed by any of the trademark owners. The "Bluetooth®" word mark and logos are registered trademarks owned by Bluetooth SIG, Inc. The "Wi-Fi®" word mark and logos are registered trademarks owned by the Wi-Fi Alliance. Any use of these marks on this website does not imply any affiliation with or endorsement.