



CAL-ROYAL N-F98CVR Concealed Vertical Rod Exit Device Installation Guide

[Home](#) » [CAL-ROYAL](#) » CAL-ROYAL N-F98CVR Concealed Vertical Rod Exit Device Installation Guide 

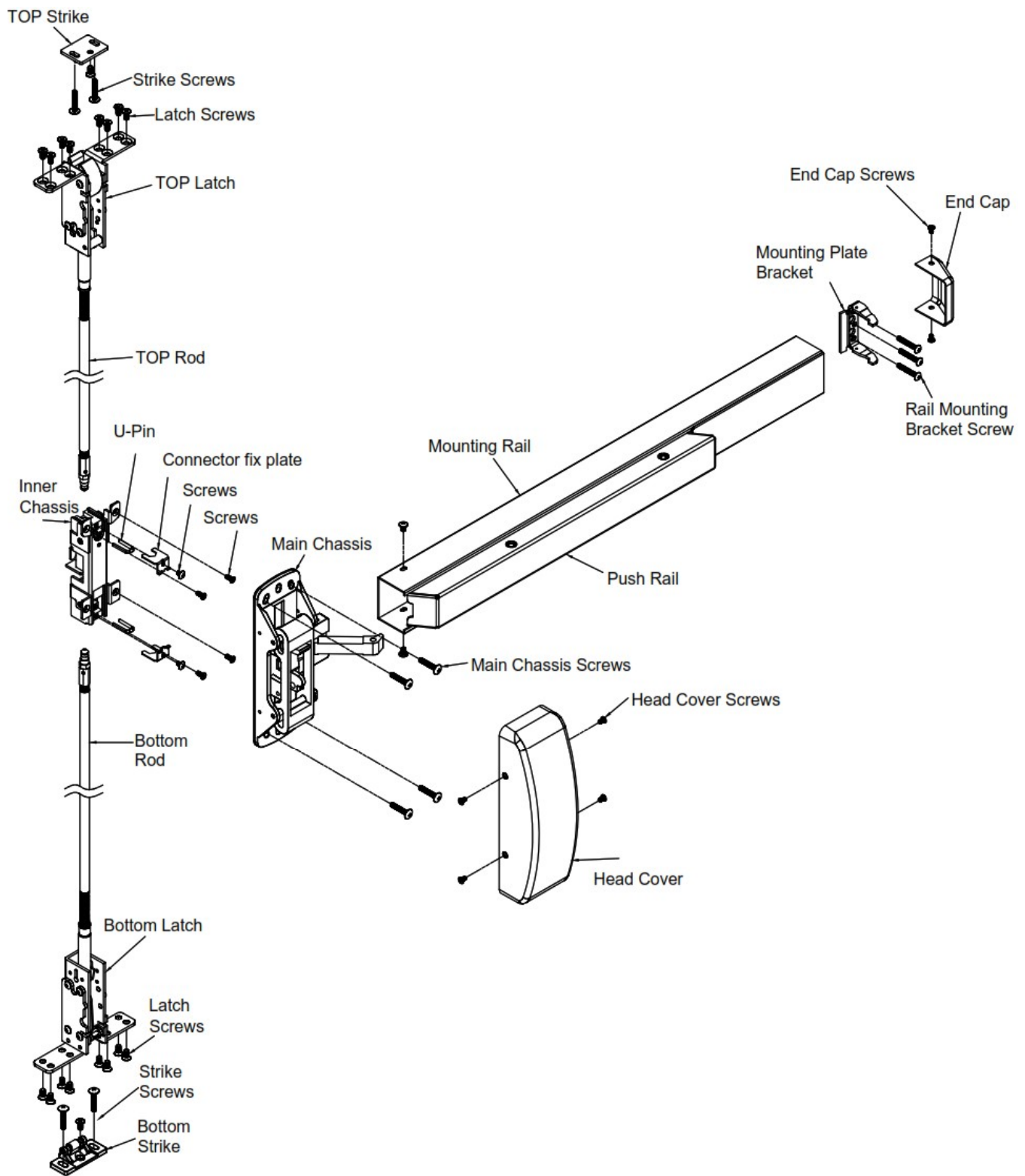


INSTALLATION INSTRUCTION N-F98CVR CONCEALED VERTICAL ROD EXIT DEVICE

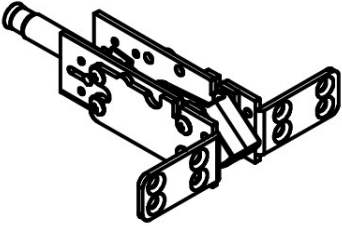
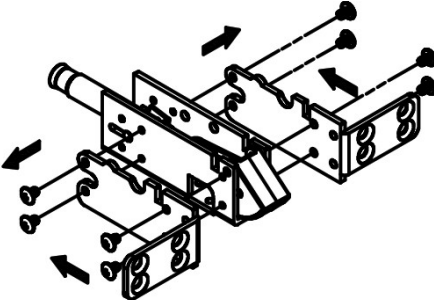
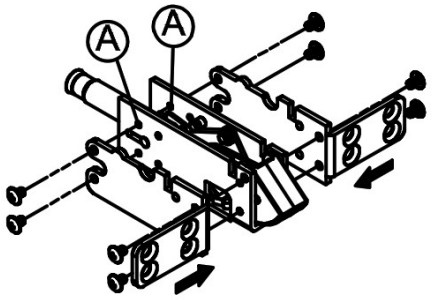

Contents

- [1 N-F98CVR Concealed Vertical Rod Exit Device](#)
- [2 TO CHANGE BOTTOM LATCH FOR BOTTOM STRIKE](#)
- [3 INSTALL INNER CHASSIS & TOP LATCH](#)
- [4 INSTALL BOTTOM LATCH \(Skip this step if less Bottom Rod\)](#)
- [5 INSTALL TOP & BOTTOM STRIKE \(Please Follow TEMPLATE\)](#)
- [6 TO CHANGE HAND OF N-F98CVR EXIT DEVICE](#)
- [7 Documents / Resources](#)
- [8 Related Posts](#)

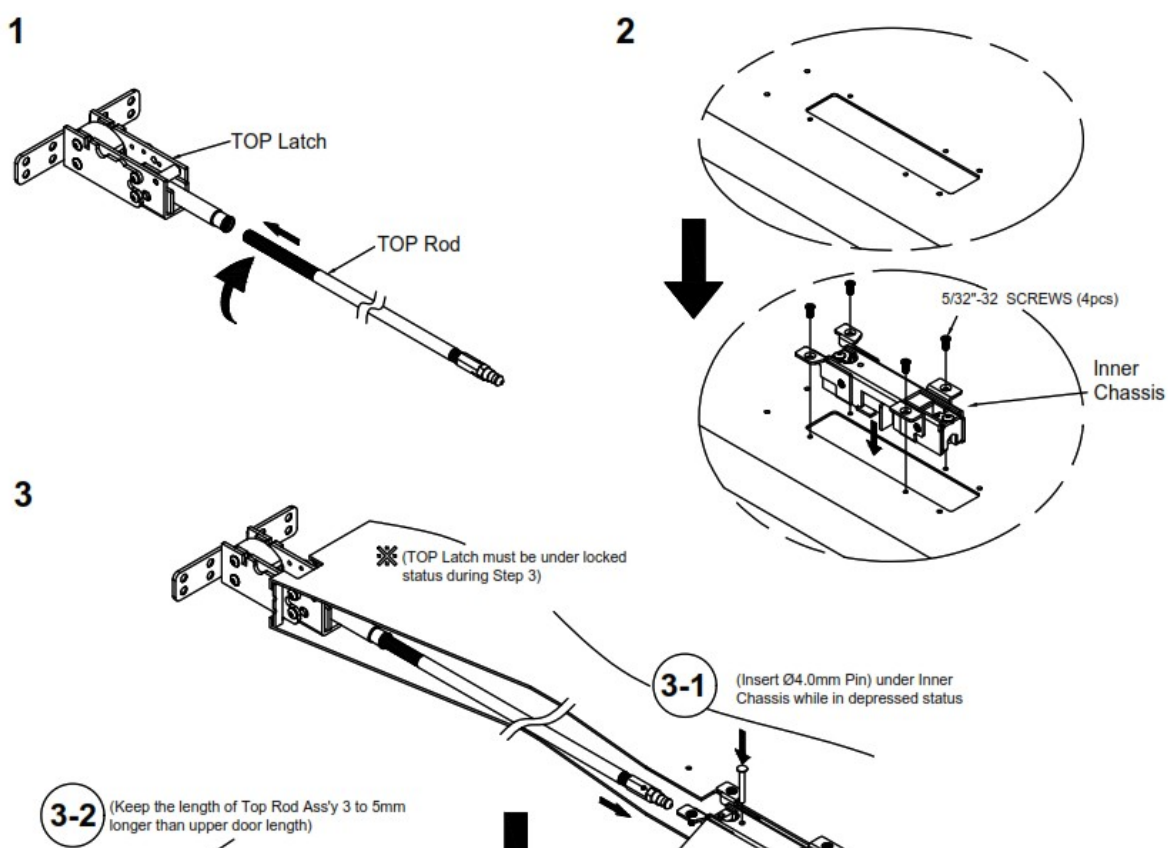
N-F98CVR Concealed Vertical Rod Exit Device



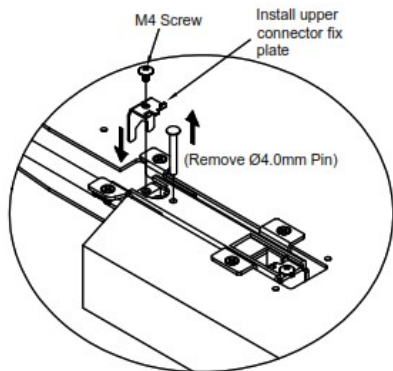
TO CHANGE BOTTOM LATCH FOR BOTTOM STRIKE

1. Device factory pre-set.	2-1. Unscrew and remove screw and L-shaped bracket. 2-2. The L-shaped bracket moves backward.	3. Move the L-shaped bracket back to the (A) screw hole and install and lock it.	4. Check it.
			

INSTALL INNER CHASSIS & TOP LATCH



4



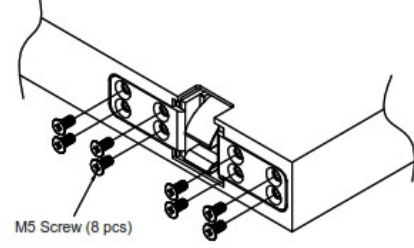
3-3

Adjust Top Rod Ass'y length

3-4

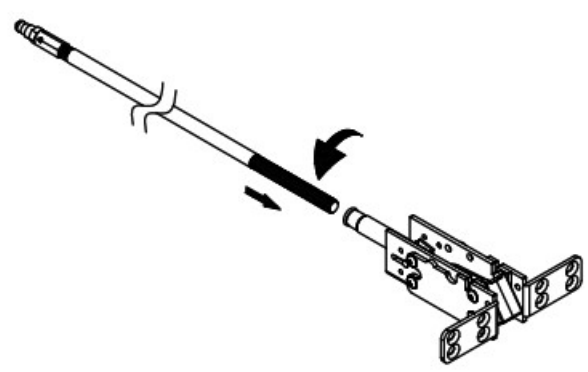
Insert U-pin

5 Install latch screws



INSTALL BOTTOM LATCH (Skip this step if less Bottom Rod)

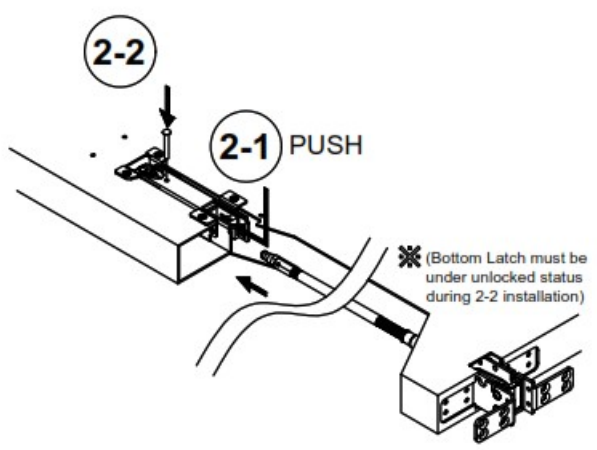
1 Attached Rod to Bottom latch



2

2-2

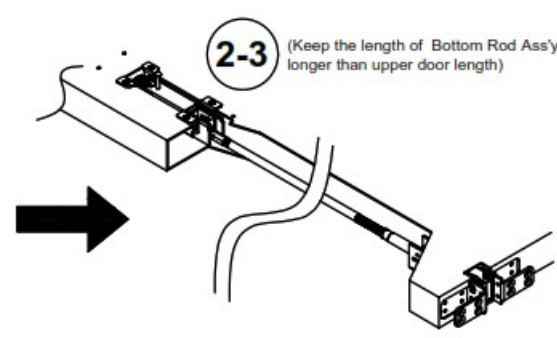
2-1 PUSH

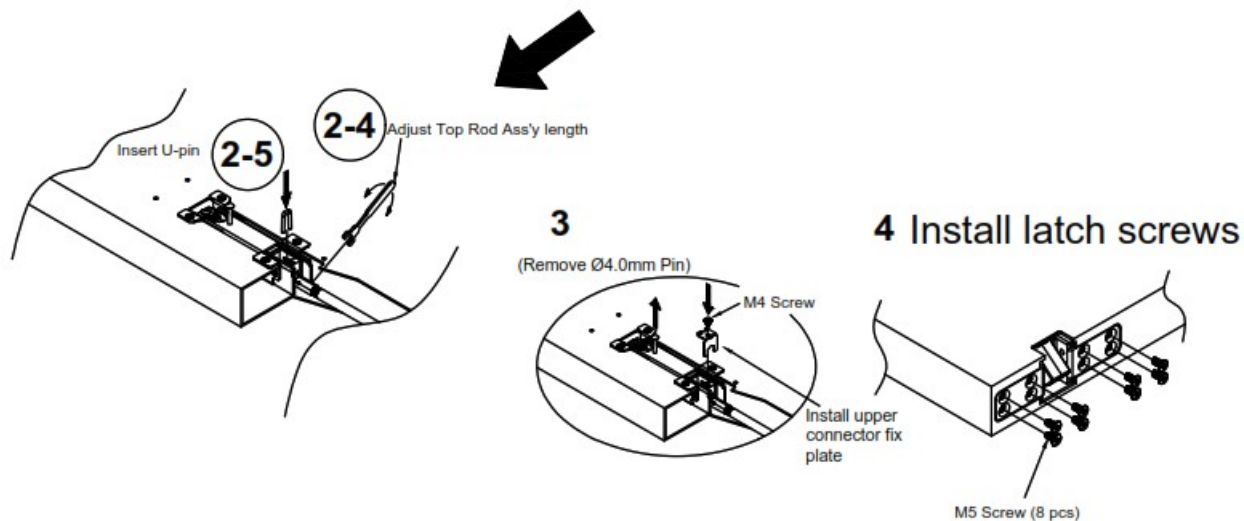


※ (Bottom Latch must be under unlocked status during 2-2 installation)

2-3

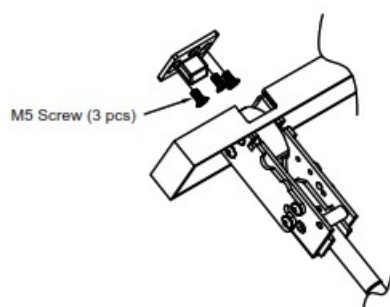
(Keep the length of Bottom Rod Ass'y 3 to 5mm longer than upper door length)



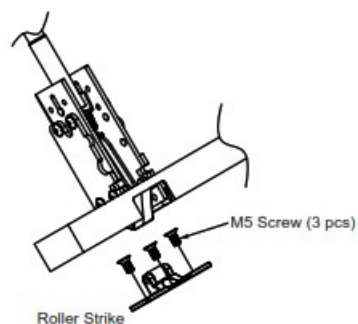


INSTALL TOP & BOTTOM STRIKE (Please Follow TEMPLATE)

1 TOP Strike

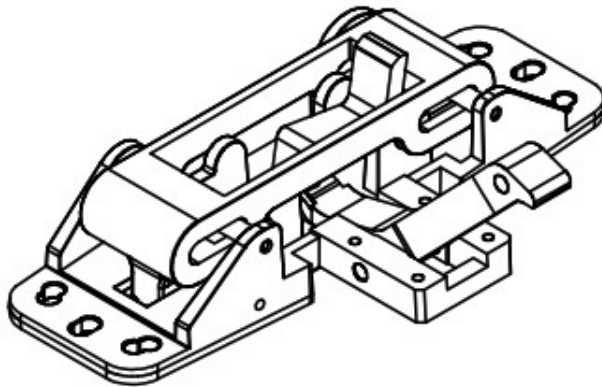


2 Bottom Strike

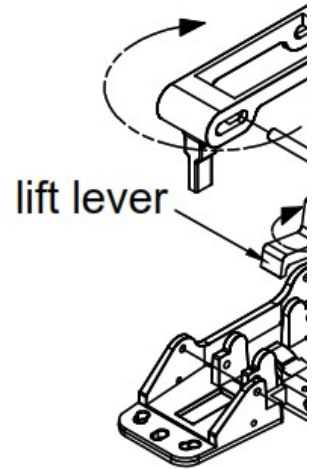


TO CHANGE HAND OF N-F98CVR EXIT DEVICE

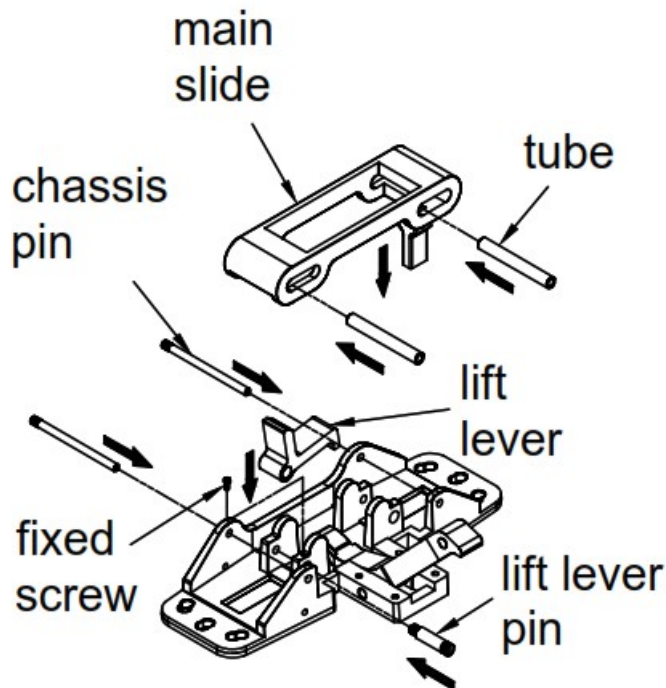
1. LHR



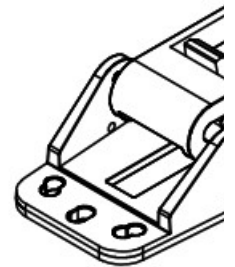
- 2-1. Remove chassis pin
- 2-2. Remove lift lever & li
- 2-3. Rotate 180° main sli



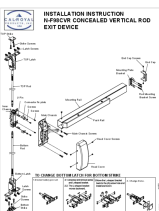
- 3-1. Reassemble lift lever at opposite side, as shown.
- 3-2. Replace main slide and chassis pin and lift lever pin. and fixed screw.



1. RHR Done.



Documents / Resources



CAL-ROYAL N-F98CVR Concealed Vertical Rod Exit Device [pdf] Installation Guide
N-98CVR, N-F98CVR, N-F98CVR Concealed Vertical Rod Exit Device, N-F98CVR Vertical Rod Exit Device, Concealed Vertical Rod Exit Device, Vertical Rod Exit Device, Vertical Exit Device, Rod Exit Device, Exit Device

