



CAL-ROYAL N-98CVR Concealed Vertical ROD Exit Device Instruction Manual

[Home](#) » [CAL-ROYAL](#) » CAL-ROYAL N-98CVR Concealed Vertical ROD Exit Device Instruction Manual 

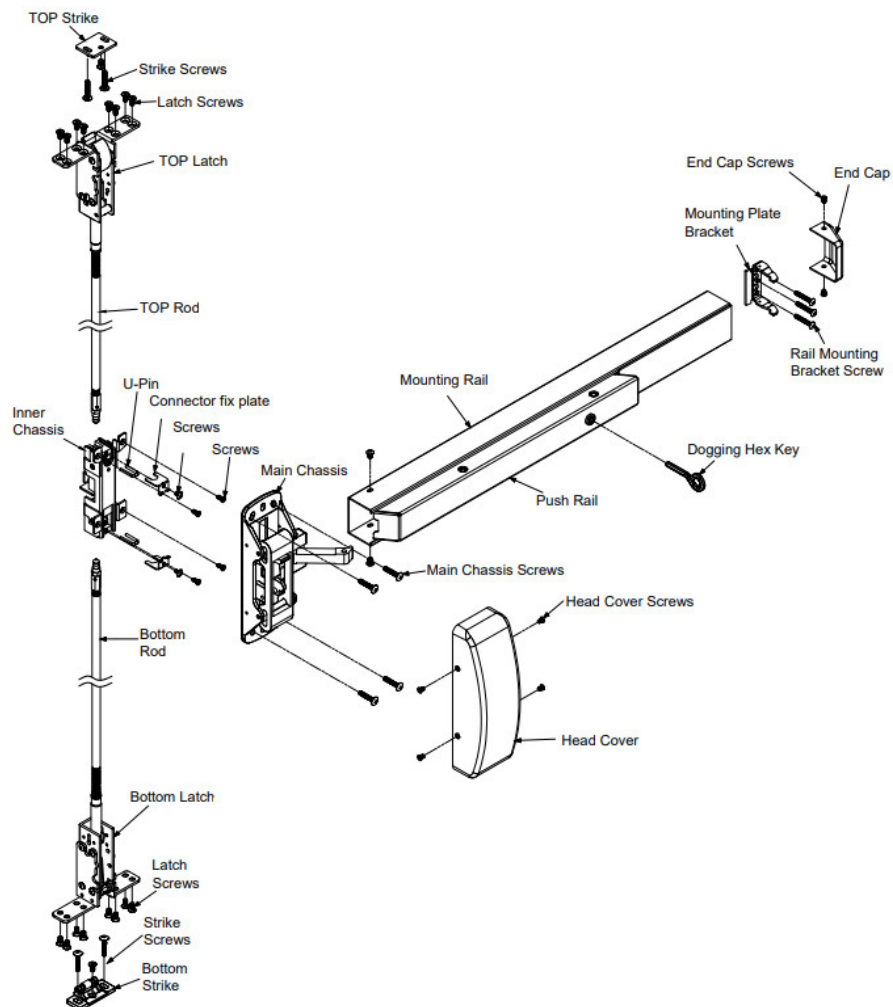


**N-98CVR Concealed Vertical ROD Exit Device
Instruction Manual**

Contents

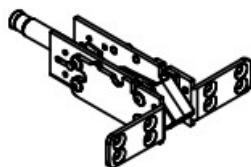
- [1 N-98CVR Concealed Vertical ROD Exit Device](#)
- [2 INSTALL INNER CHASSIS & TOP LATCH](#)
- [3 INSTALL TOP & BOTTOMSTRIKE \(Please Follow TEMPLATE\)](#)
- [4 Documents / Resources](#)
- [5 Related Posts](#)

N-98CVR Concealed Vertical ROD Exit Device

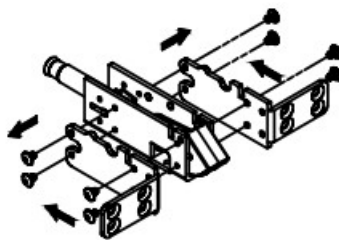


TO CHANGE BOTTOM LATCH FOR BOTTOM STRIKE

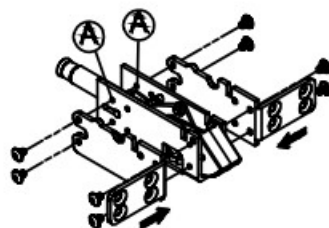
1. Device factory pre-set.



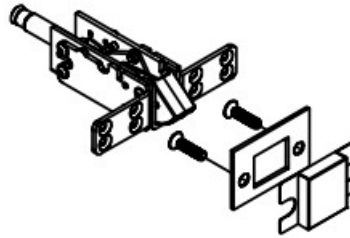
2. -1. Unscrew and remove screw and L-shaped bracket. 2-2. The L-shaped bracket moves backward.



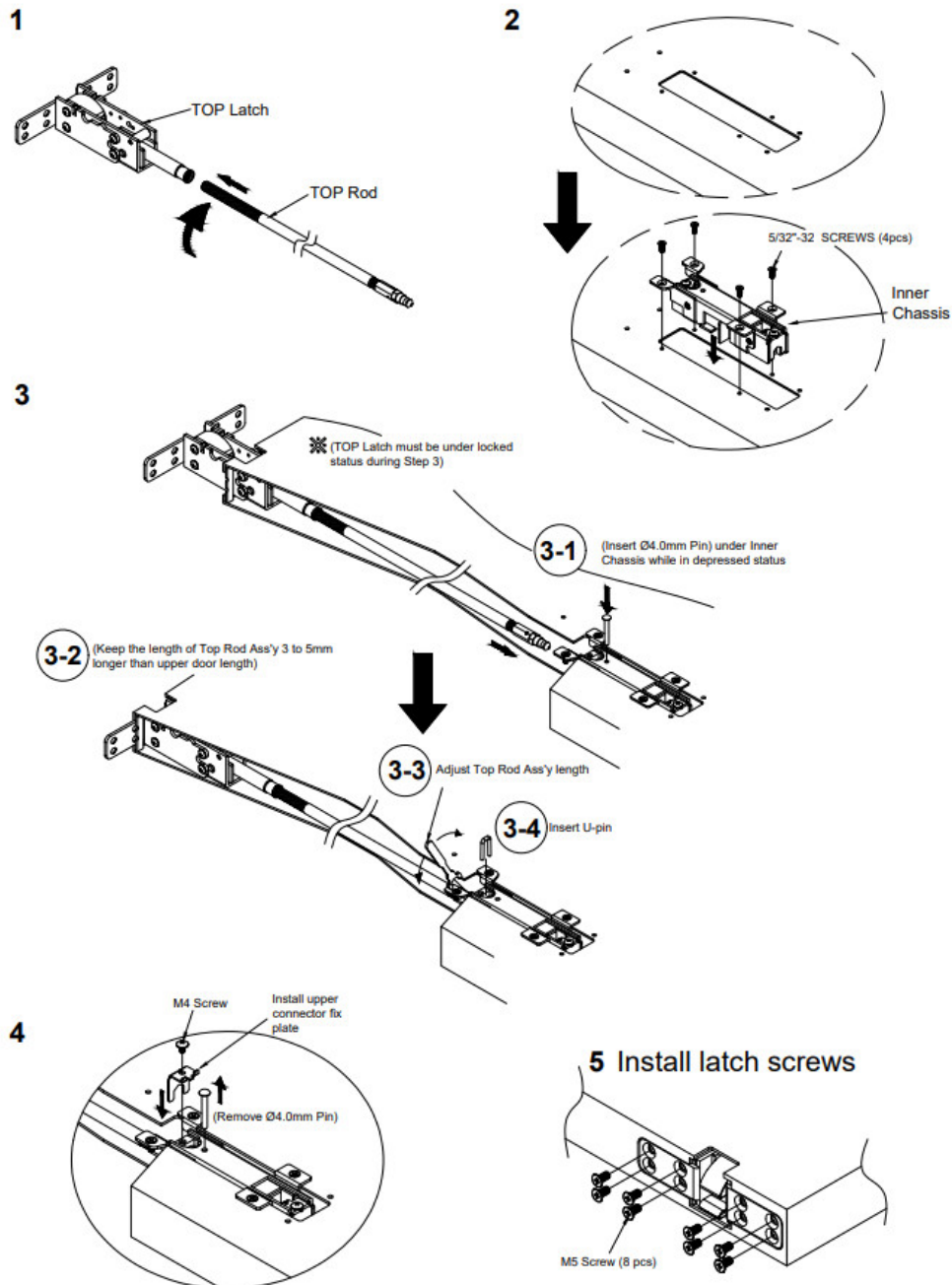
3. Move the L-shaped bracket back to the (A) screw hole and install and lock it.



4. Change Done.



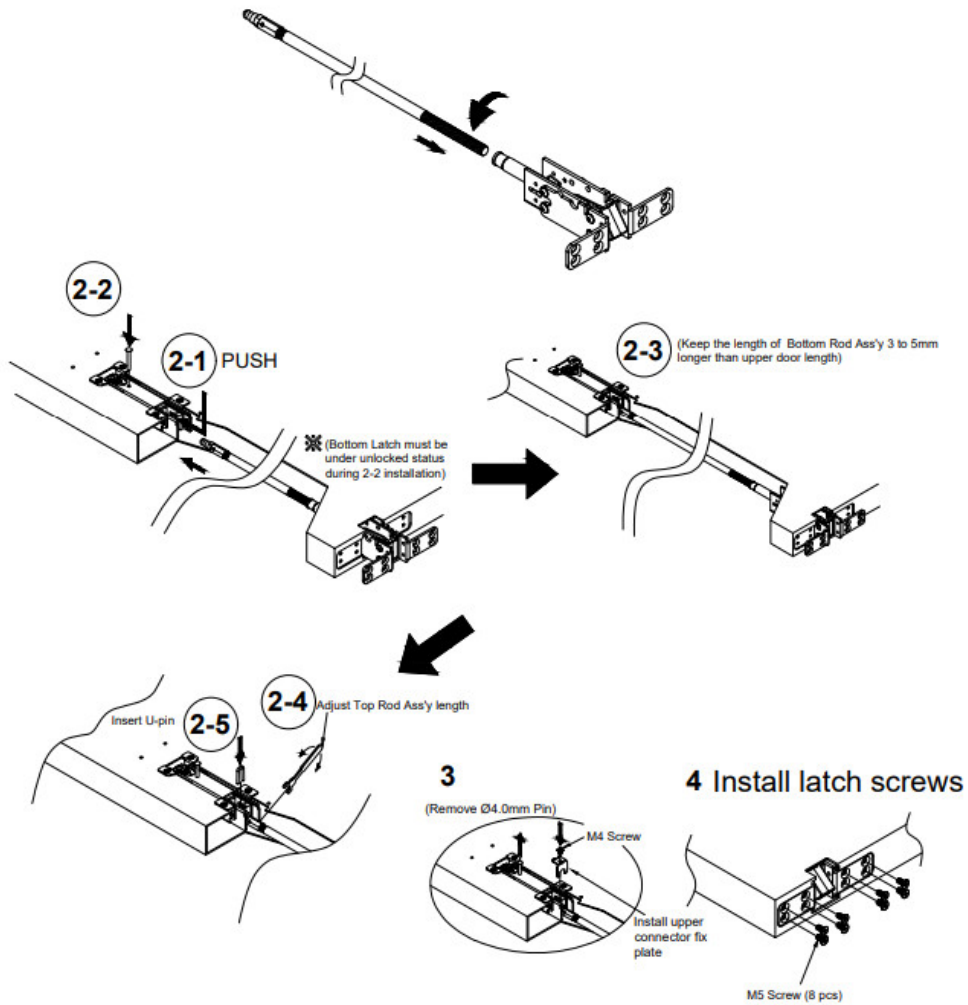
INSTALL INNER CHASSIS & TOP LATCH



INSTALL BOTTOM LATCH (Skip this step if less Bottom Rod)

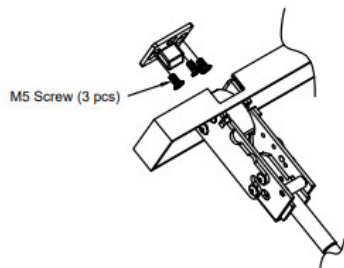
Attached Rod to Bottom latch

2

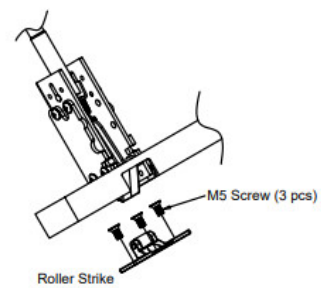


INSTALL TOP & BOTTOMSTRIKE (Please Follow TEMPLATE)

1 TOP Strike

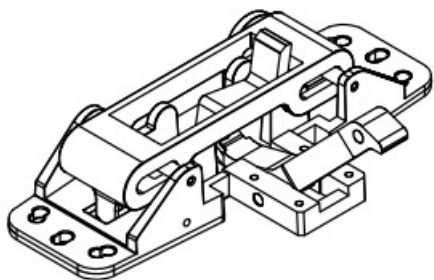


2 Bottom Strike

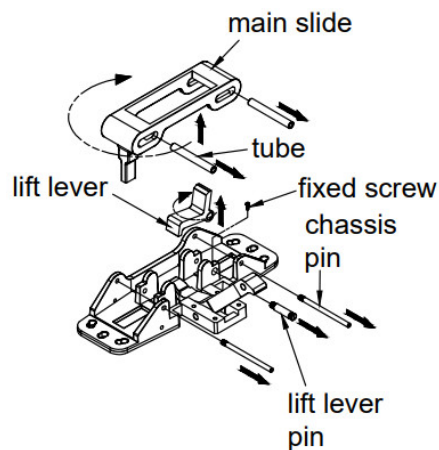


TO CHANGE HAND OF N-98CVR EXIT DEVICE

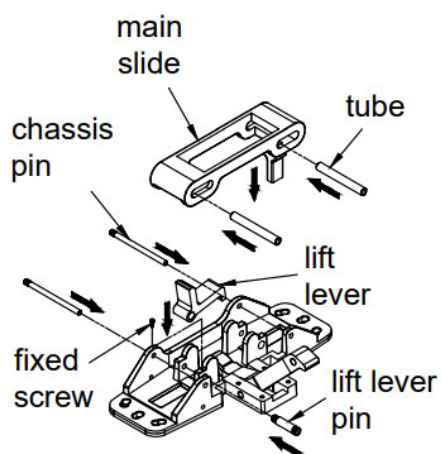
1. LHR



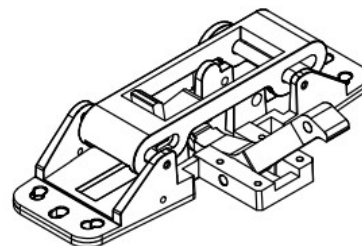
- 2-1. Remove chassis pin & main slide & tube.
- 2-2. Remove lift lever & lift lever pin.
- 2-3. Rotate 180° main slide & lift lever



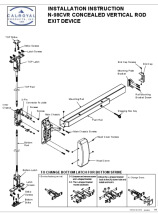
- 3-1. Reassemble lift lever at opposite side, as shown.
- 3-2. Replace main slide and chassis pin and lift lever pin. and fixed screw.



1. RHR Done.



Documents / Resources



[CAL-ROYAL N-98CVR Concealed Vertical ROD Exit Device](#) [pdf] Instruction Manual
N-98CVR, N-F98CVR, N-98CVR Concealed Vertical ROD Exit Device, N-98CVR Vertical ROD Exit Device, Concealed Vertical ROD Exit Device, Vertical ROD Exit Device, Vertical ROD, Exit Device