



CAL-ROYAL 8000V Vertical Rod Exit Device Reversible Installation Guide

[Home](#) » [CAL-ROYAL](#) » CAL-ROYAL 8000V Vertical Rod Exit Device Reversible Installation Guide 

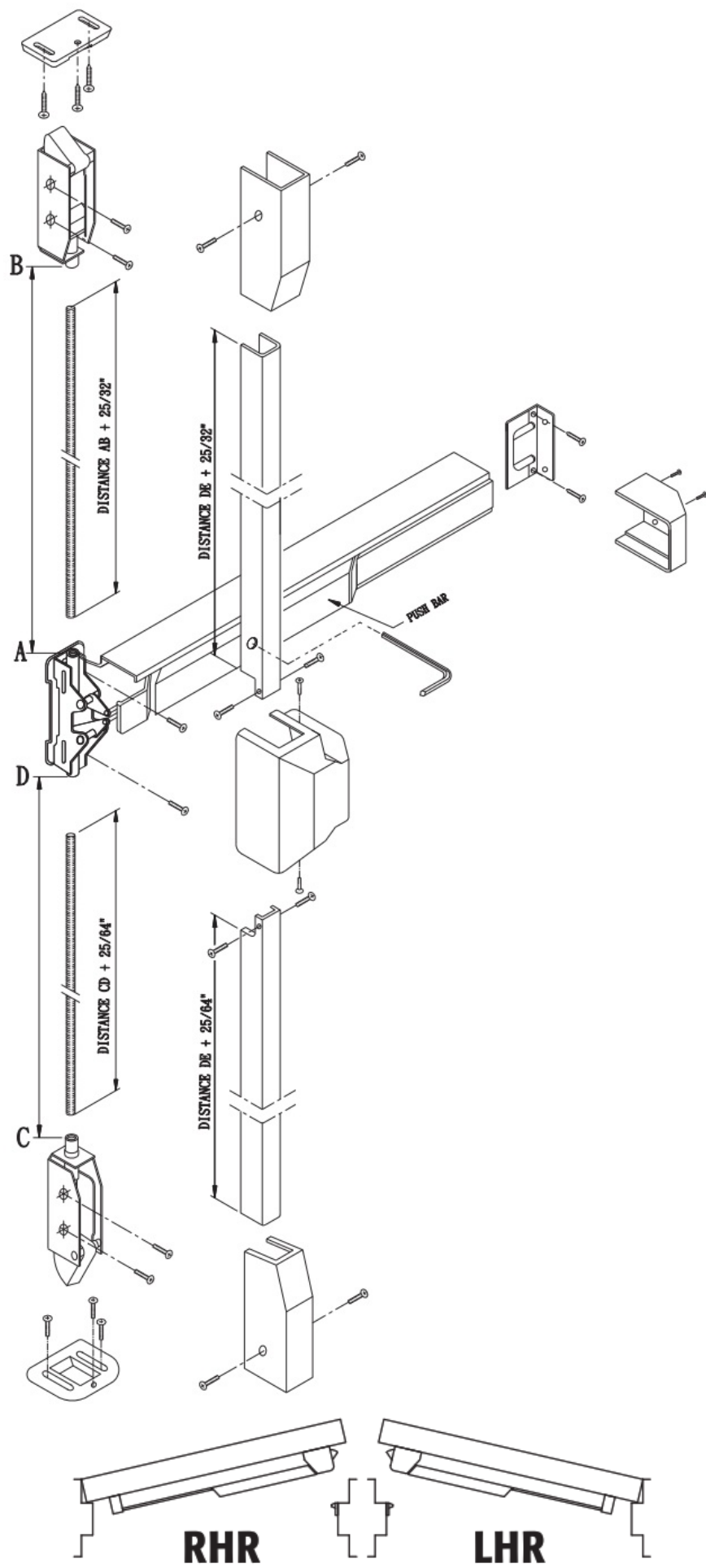


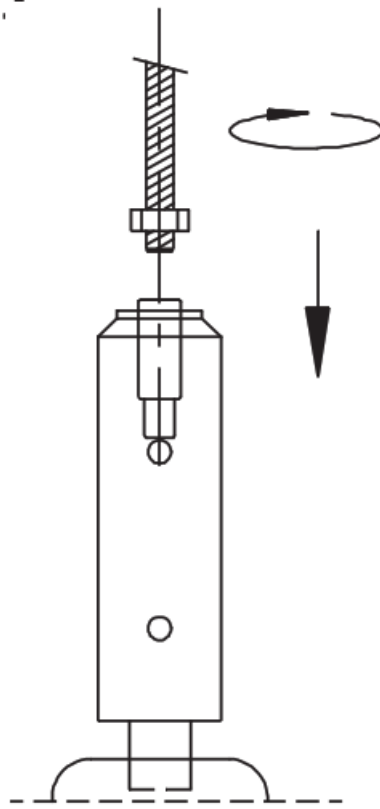
**8000V VERTICAL ROD EXIT DEVICE-REVERSIBLE
INSTALLATION INSTRUCTIONS
LHR door shown , RHR door opposite**

Contents

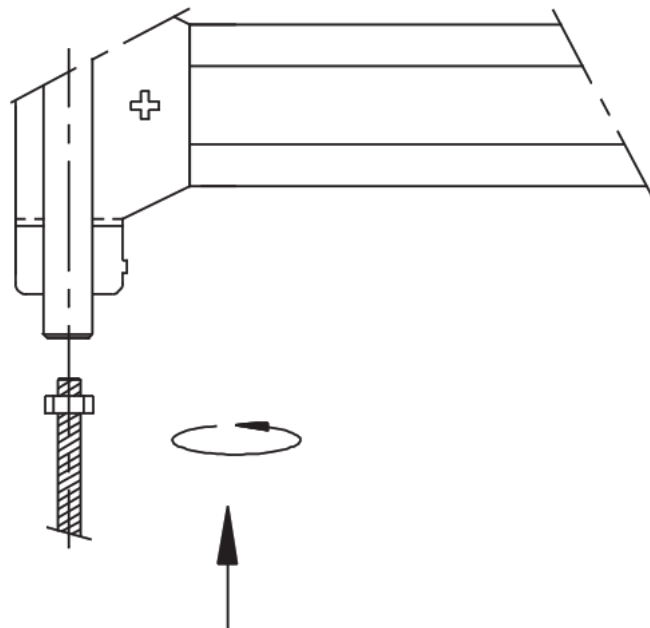
- [1 8000V Vertical Rod Exit Device Reversible](#)
- [2 Documents / Resources](#)
- [3 Related Posts](#)

8000V Vertical Rod Exit Device Reversible

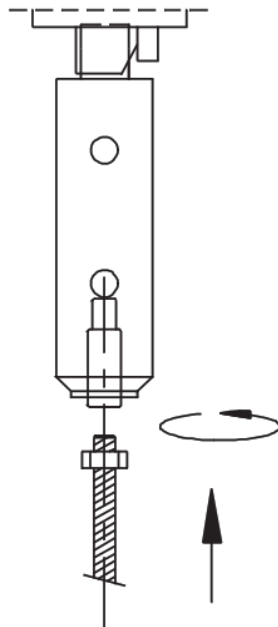




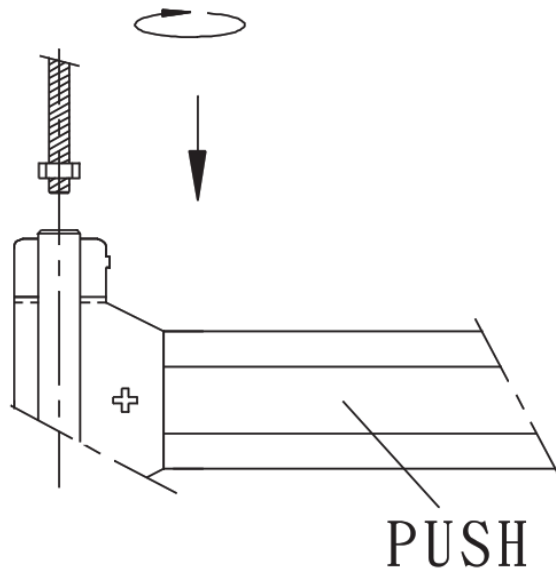
1. Turn the threaded rod clockwise about 15mm to 20mm into the bottom latch



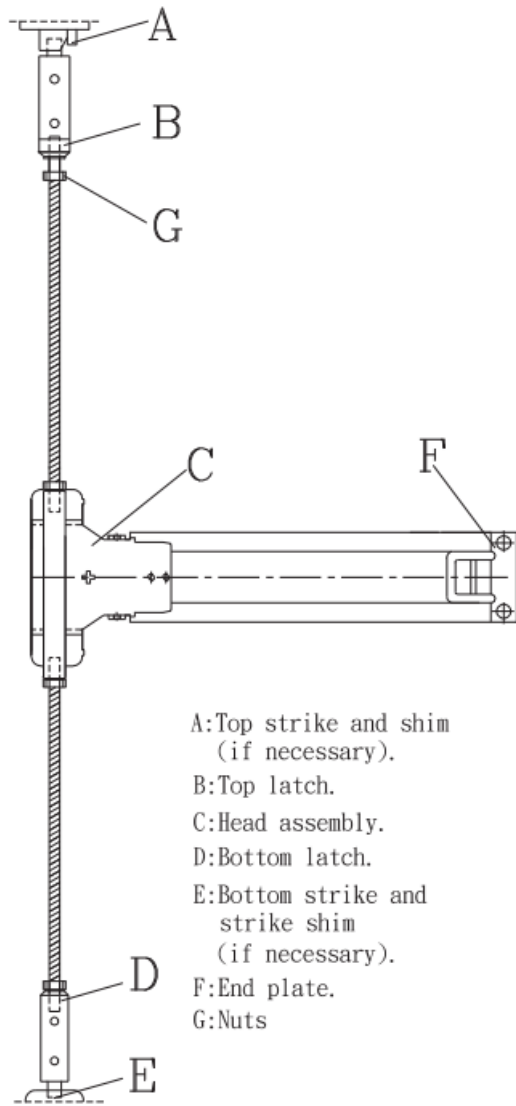
2. Push the bar first and then pull the threaded rod in order to turn it 5mm to 10mm into the connection anticlockwise



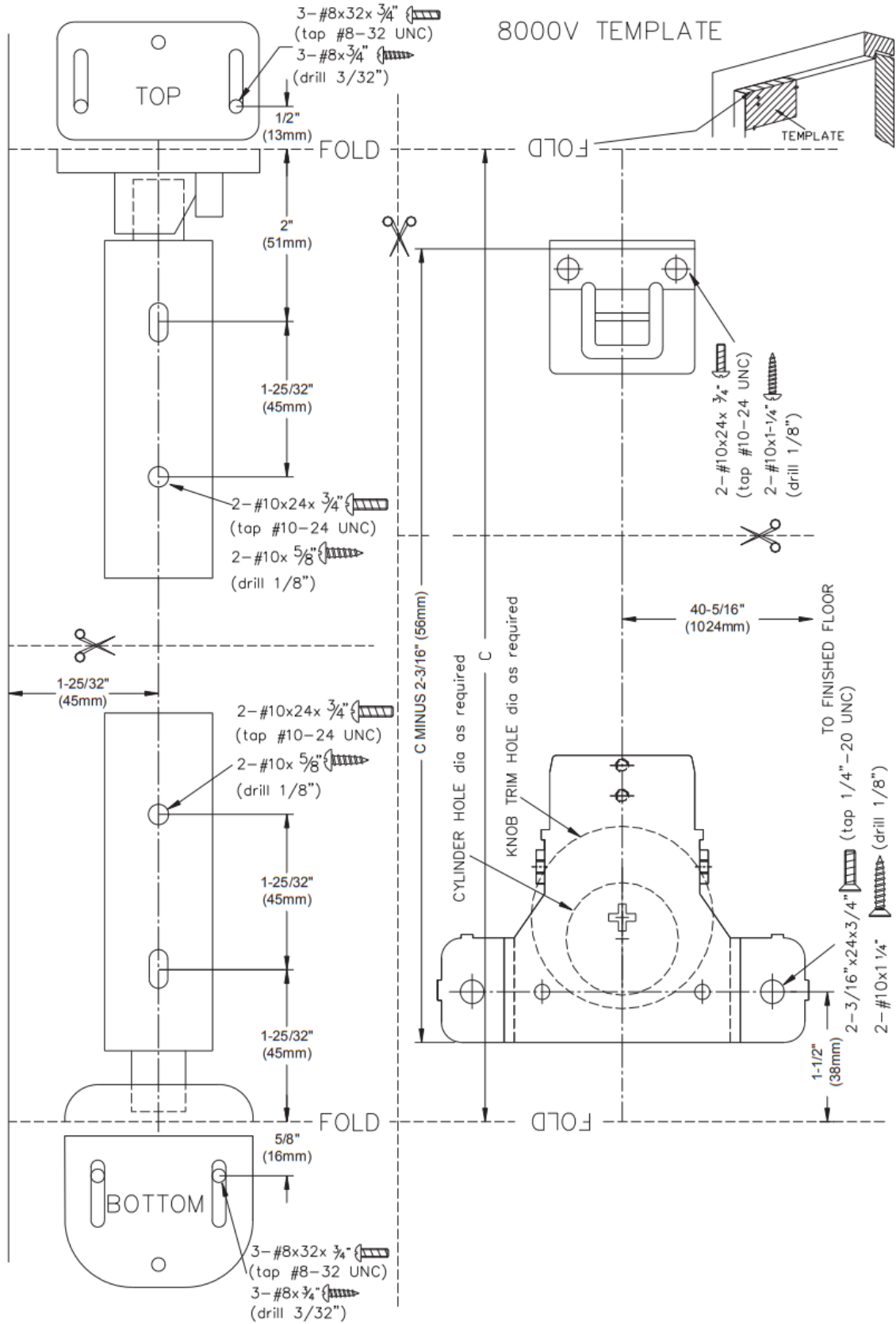
3. Push the top latch in order to turn the threaded rod anticlockwise 15 mm to 20mm into the top latch

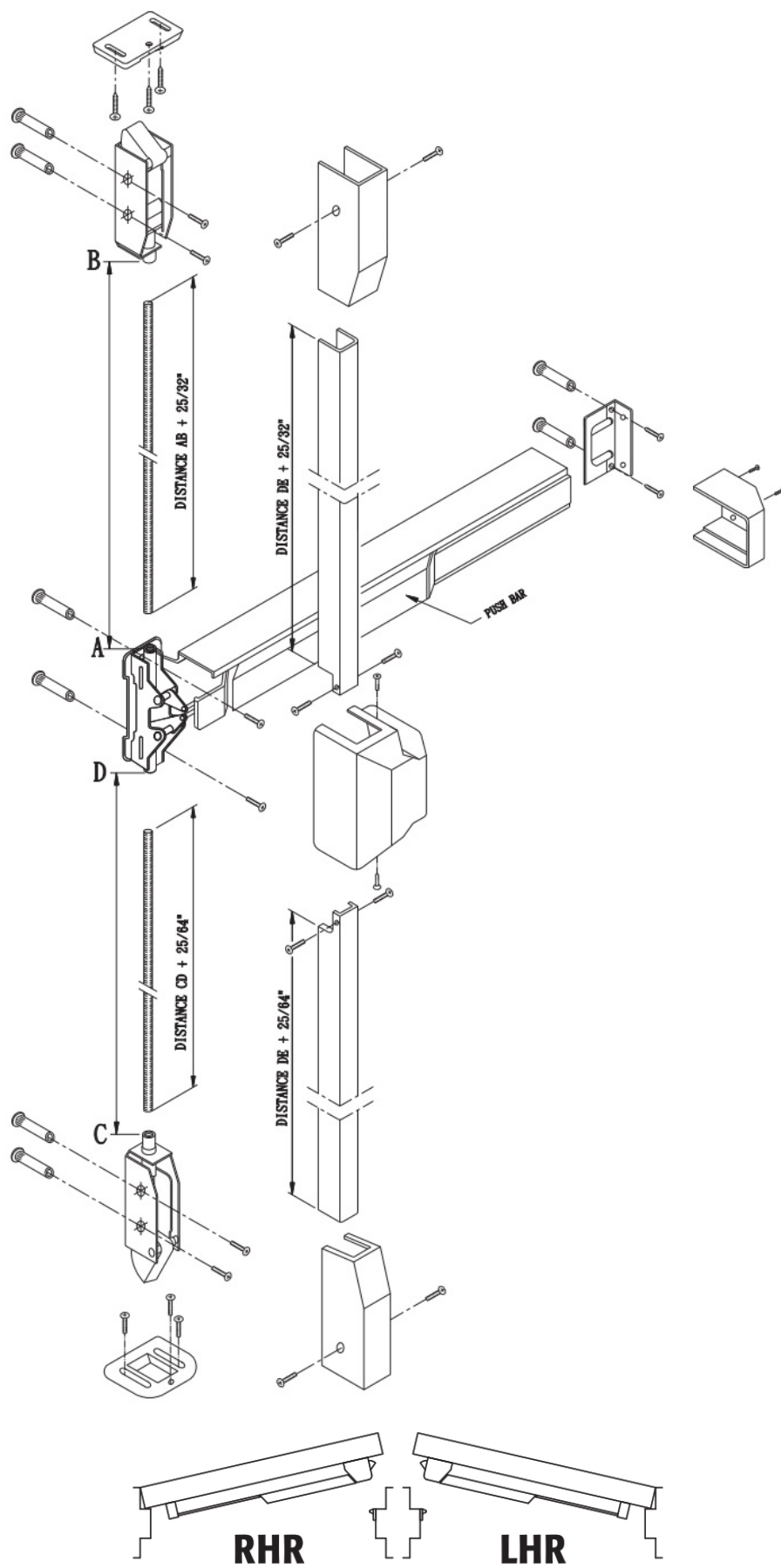


4. Push the bar again and turn the threaded rod into the connection clockwise about 5mm to 10mm
5. Test the movement, and then tighten the nut , put on all the other parts.

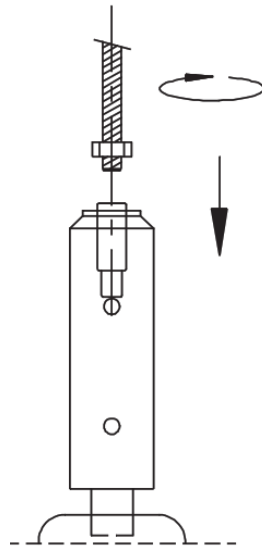


8000V TEMPLATE

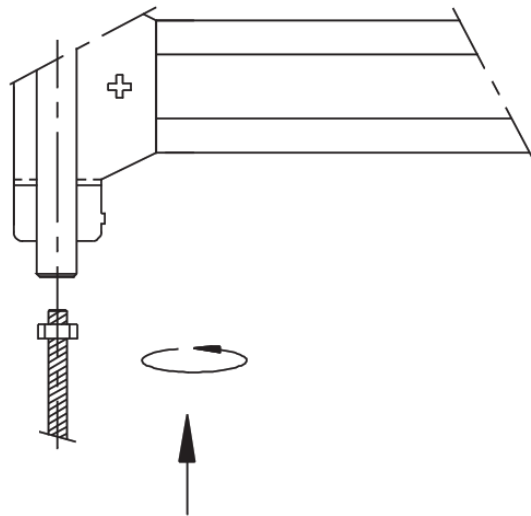




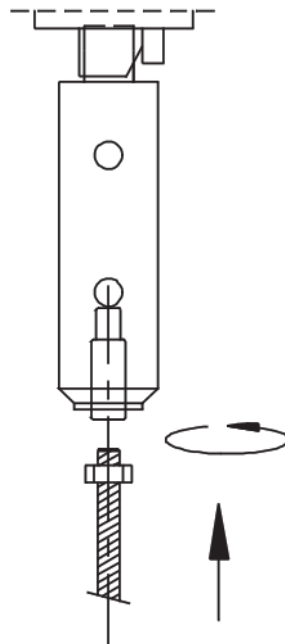
1. Turn the threaded rod clockwise about 15mm to 20mm into the bottom latch



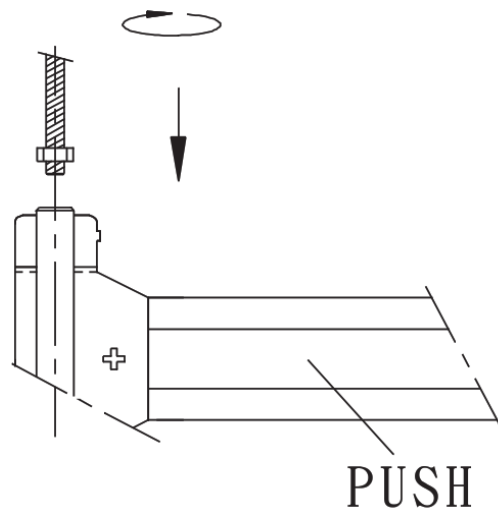
2. Push the bar first and then pull the threaded rod in order to turn it 10mm into the connection anticlockwise



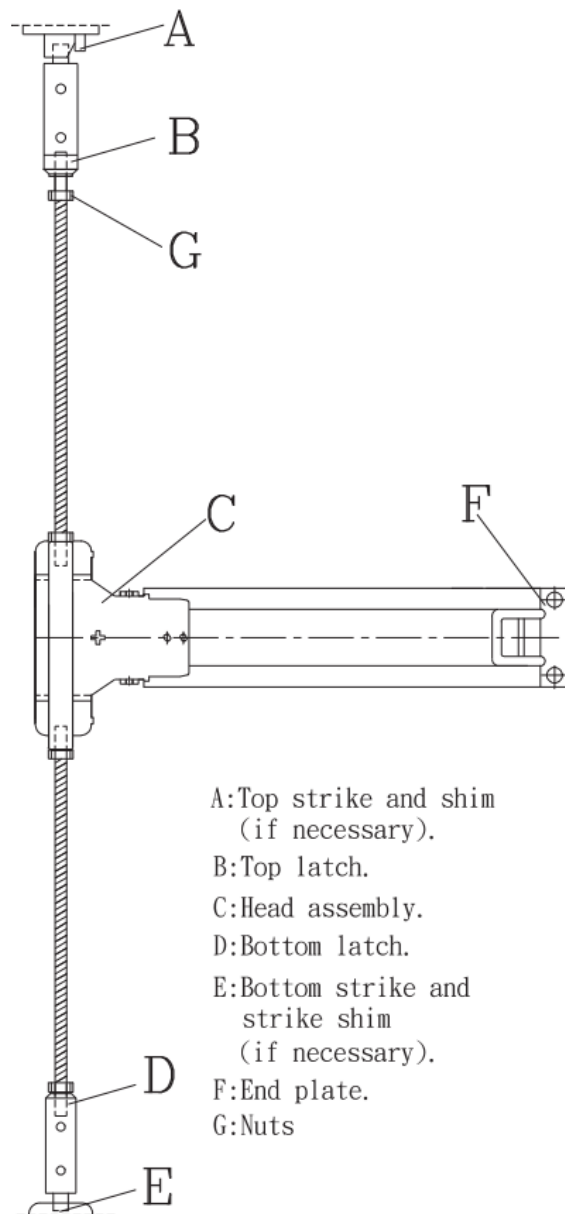
3. Push the top latch in order to turn the threaded rod counter-clockwise 15mm to 20mm into the top latch



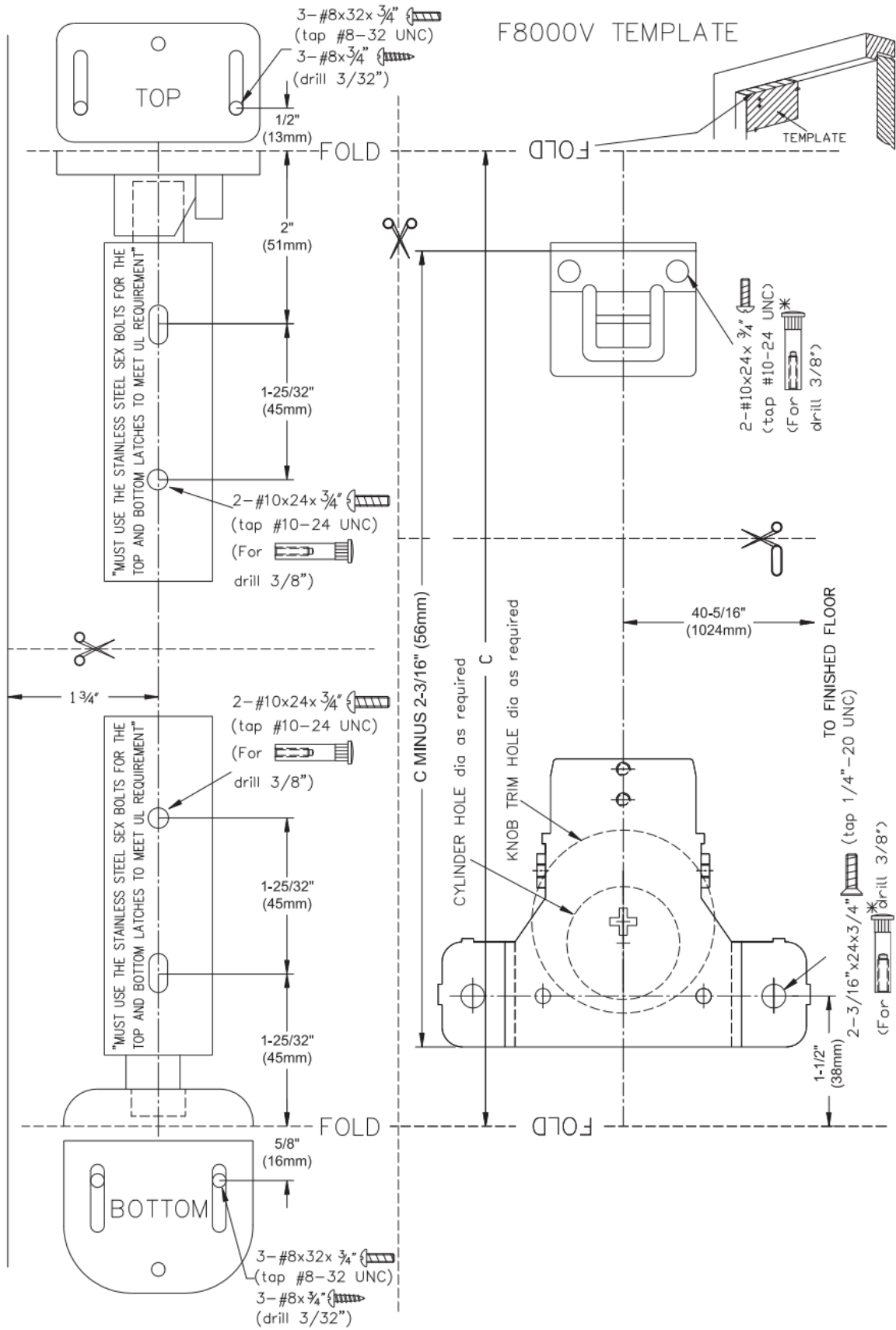
4. Push the bar again and turn the threaded rod into the connection clockwise about 5mm to 10 mm

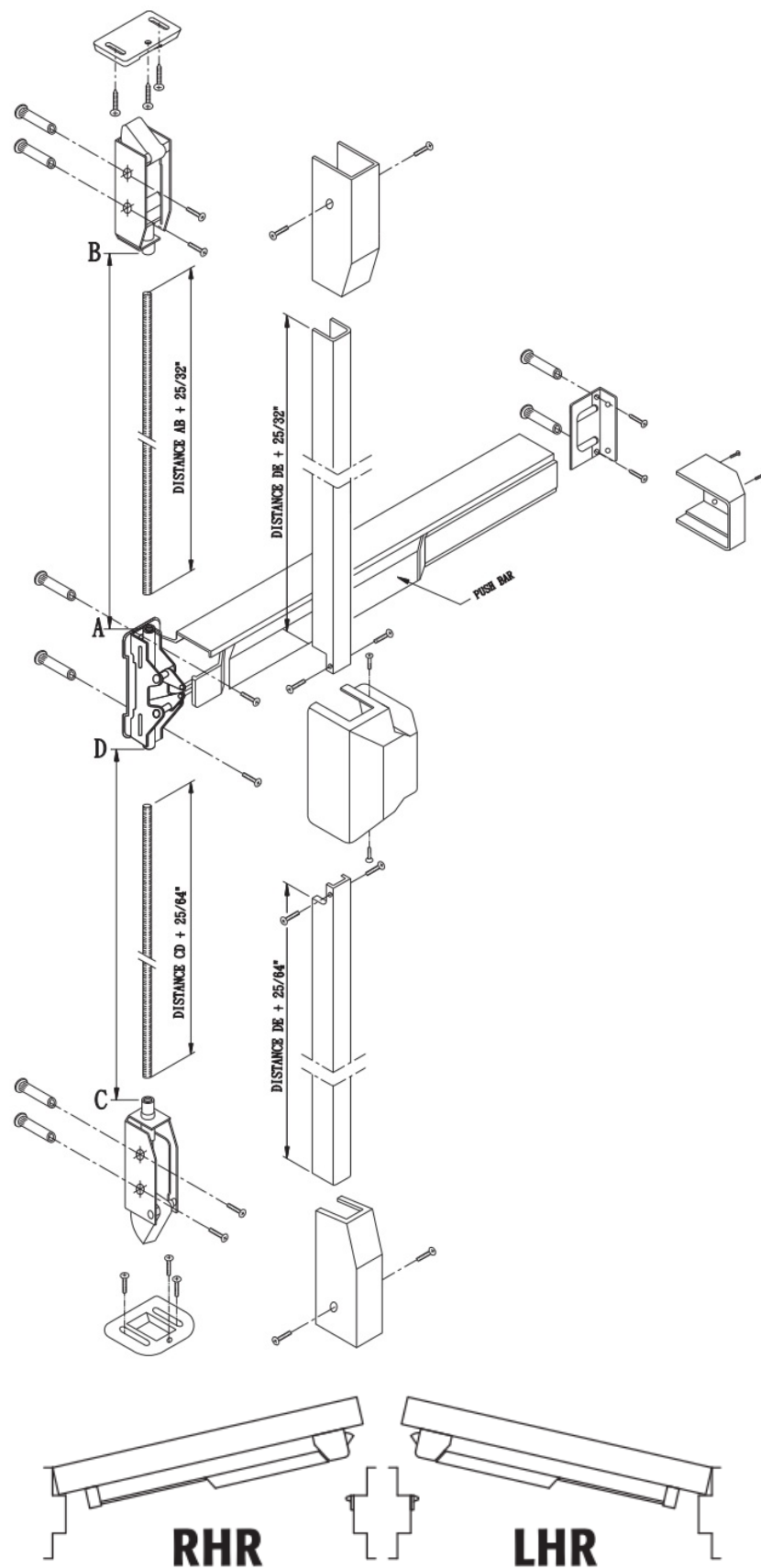


5. Test the movement, and then tighten the nut put on all the other parts.

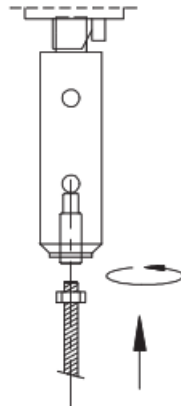


F8000V TEMPLATE

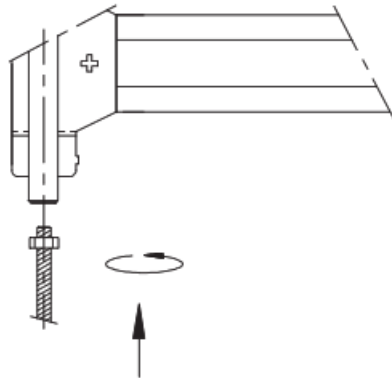




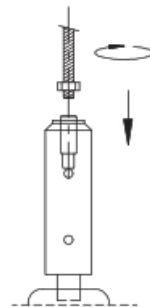
1. Turn the threaded rod clockwise about 15mm to 20mm into the bottom latch



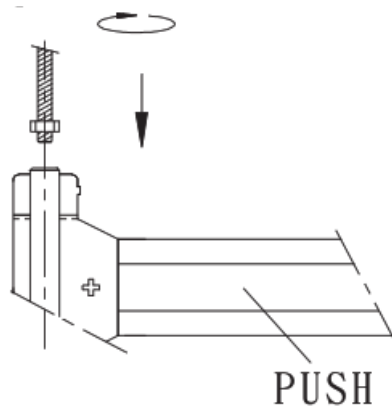
2. Push the bar first and then pull the threaded rod in order to turn it 10mm into the connection anticlockwise



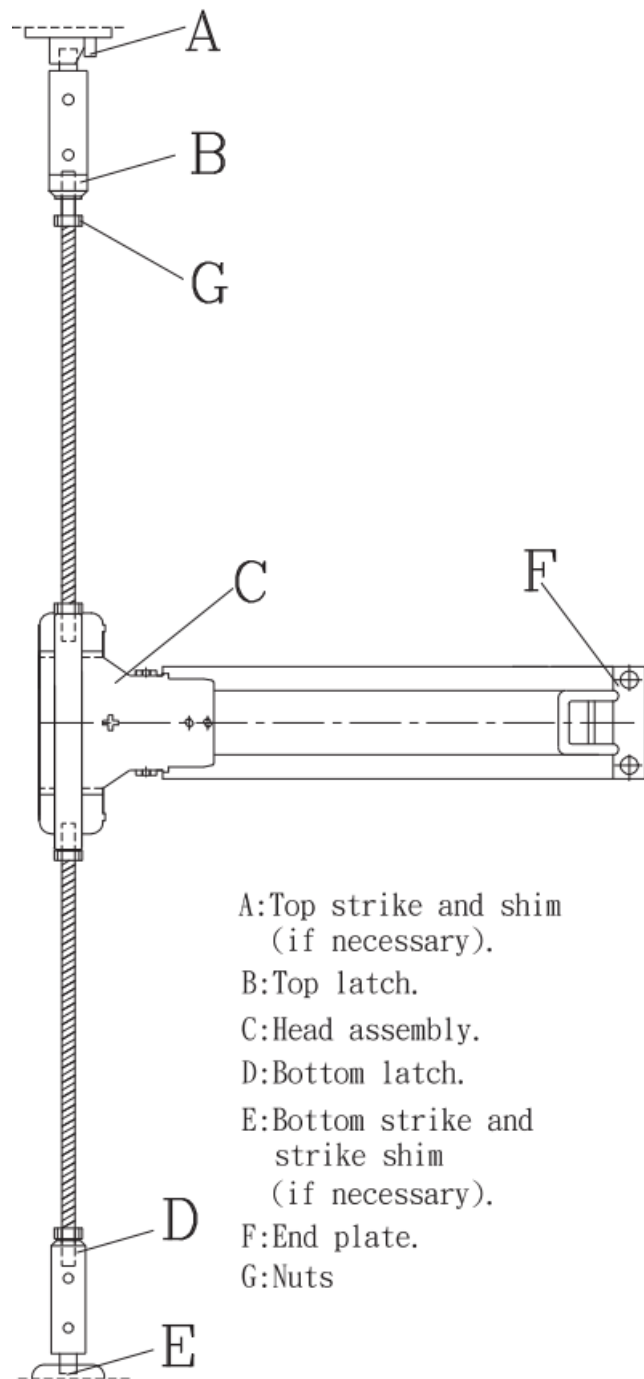
3. Push the top latch in order to turn the threaded rod anticlockwise 15mm to 20mm into the top latch



4. Push the bar again and turn the threaded rod into the connection clockwise about 5mm to 10 mm



5. Test the movement, and then tighten the nut put on all the other parts.



A:Top strike and shim
(if necessary).

B:Top latch.

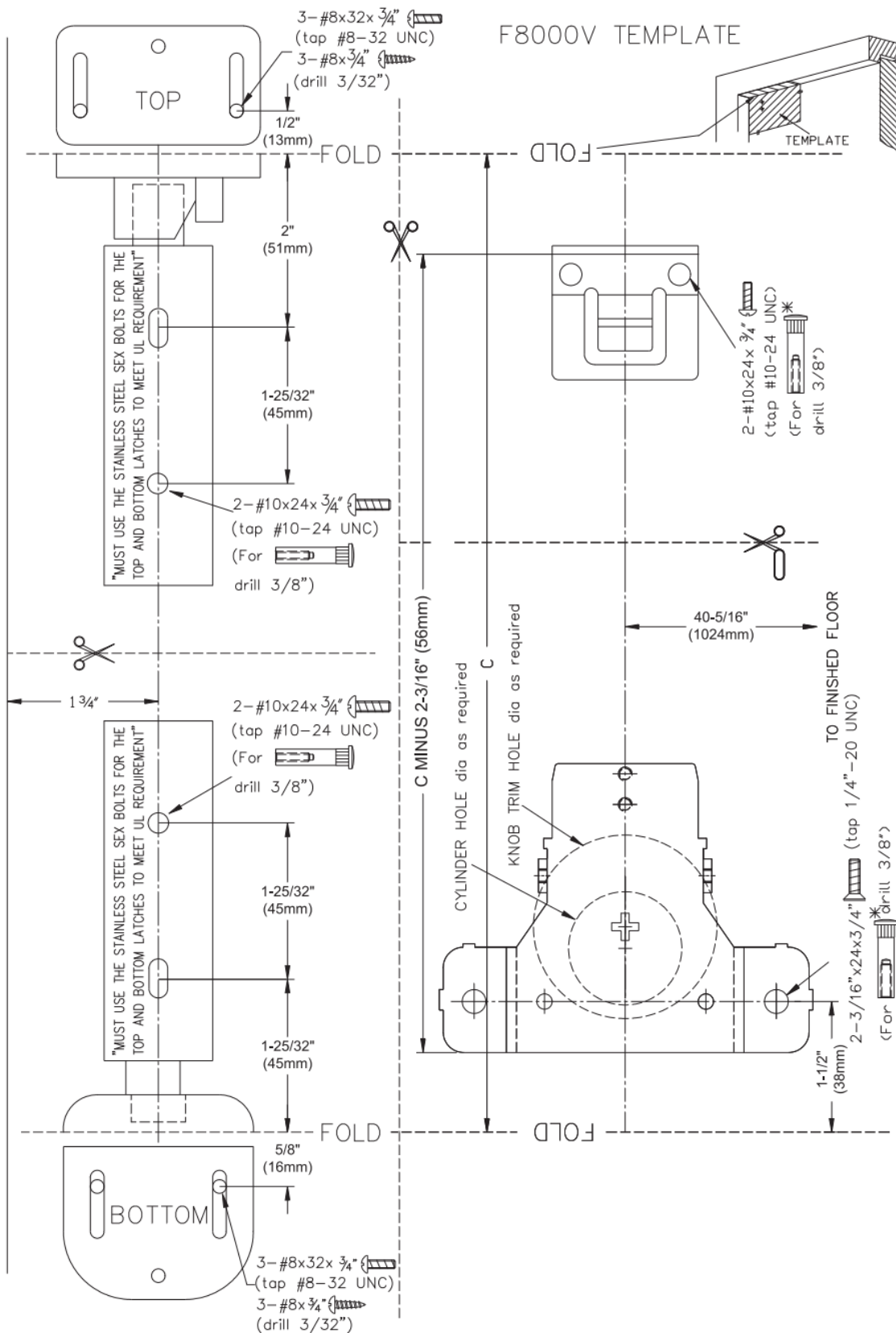
C:Head assembly.

D:Bottom latch.

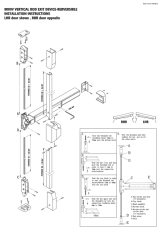
E:Bottom strike and
strike shim
(if necessary).

F:End plate.

G:Nuts



CAL-ROYAL
P R O D U C T S, I N C.



CAL-ROYAL 8000V Vertical Rod Exit Device Reversible [pdf] Installation Guide
8000V Vertical Rod Exit Device Reversible, 8000V Exit Device, Vertical Rod Exit Device Reversible, Exit Device