



CAKE Makka Front Carrier Instructions

[Home](#) » [cake](#) » CAKE Makka Front Carrier Instructions 

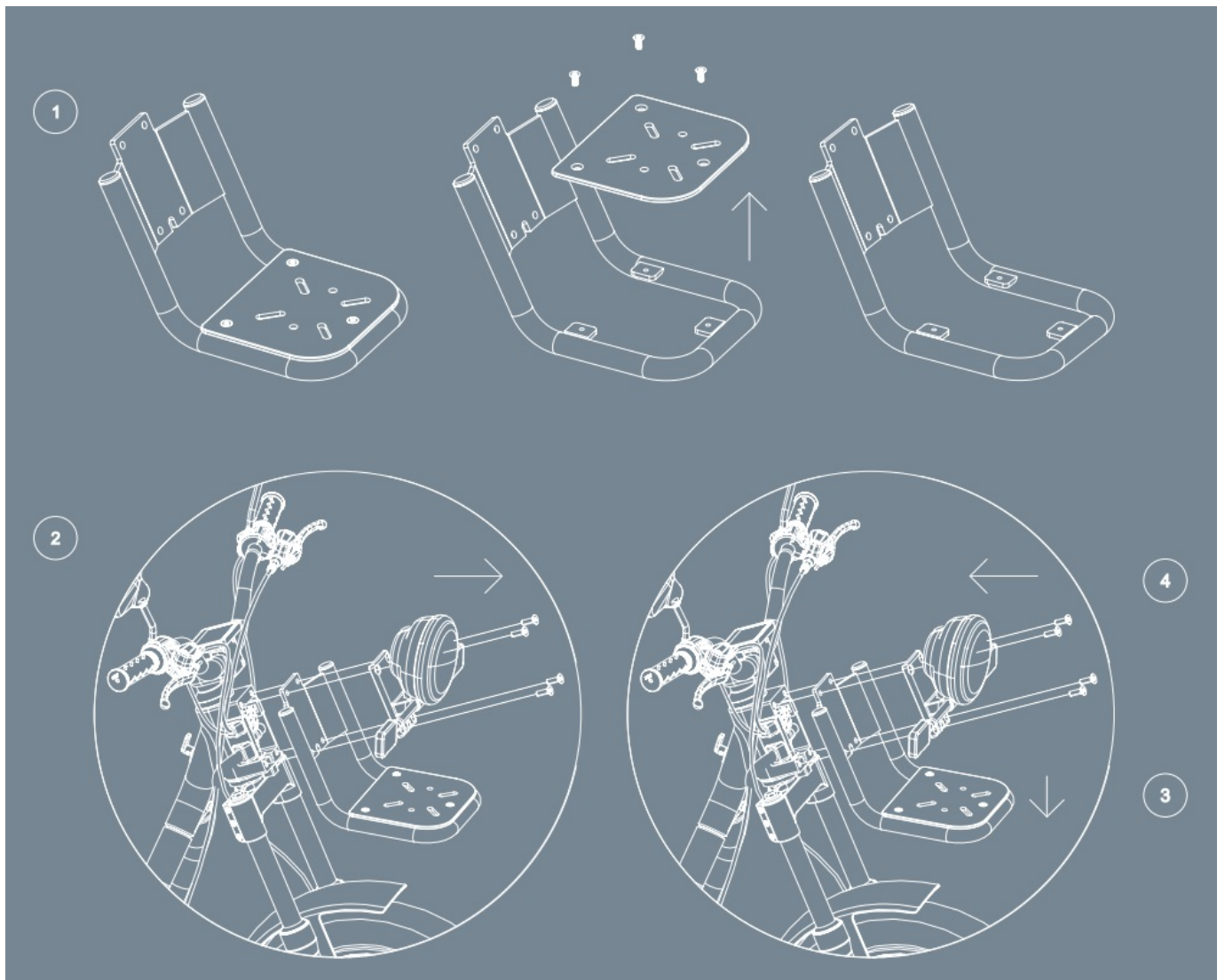
CAKE

Makka carrier / front
Instructions

Contents

- [1 Makka Front Carrier](#)
- [2 Documents / Resources](#)
- [3 Related Posts](#)

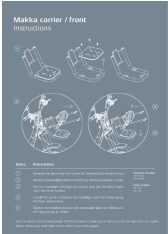
Makka Front Carrier



Items	Instructions	
1	Remove the plate from the carrier by removing the three screws	Fasteners included
2	Remove the headlight from the frame by removing the four screws	4x screws 3x screws
3	Put the headlight through the carrier and put the plate back with the three screws	Tools needed Torx 45 Torx 30
4	Install the carrier between the headlight and the frame using the four new screws	
5	Tighten the small screws on the removable plate to 10Nm and the big screws to 15Nm	

Note: be aware of the loading height with this product to make sure it does not cover the light and turn signals. Please contact your local CAKE service center if you need support

Documents / Resources



[CAKE Makka Front Carrier](#) [pdf] Instructions
Makka Front Carrier, Front Carrier, Makka Carrier, Carrier