



CAIROCK Ceiling Fans with Lights Remote and App Control User Guide

[Home](#) » [CAIROCK](#) » CAIROCK Ceiling Fans with Lights Remote and App Control User Guide 

Contents

- [1 CAIROCK Ceiling Fans with Lights Remote and App Control](#)
- [2 Installation instructions](#)
- [3 Assemble the blades](#)
- [4 Assemble the lamp tray \(10\)](#)
- [5 Assemble the hanging parts](#)
- [6 Assemble the light cover \(5\)](#)
- [7 Assemble the hanging bracket \(8\)](#)
- [8 Documents / Resources](#)
 - [8.1 References](#)
- [9 Related Posts](#)

CAIROCK

CAIROCK Ceiling Fans with Lights Remote and App Control



Installation instructions

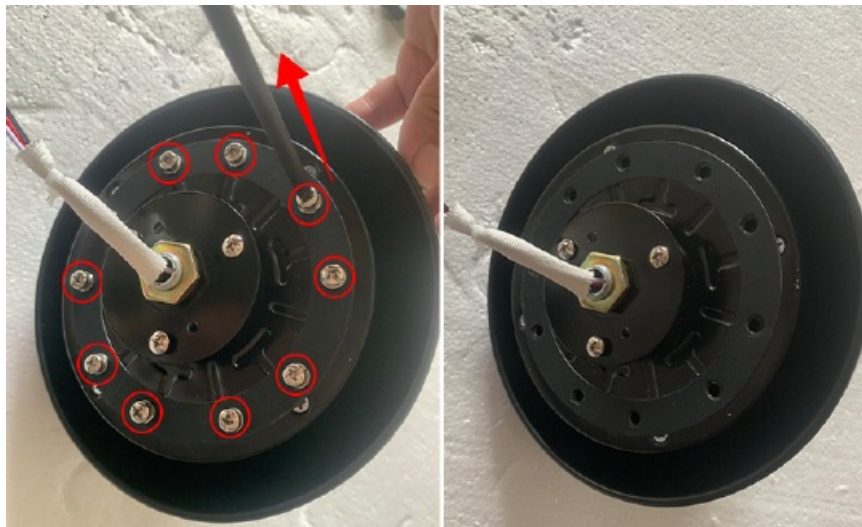
Accessories diagram

small hanging cup 2big hanging cup 3light @blades (5 pieces) Slight cover Glong hanging lever short hanging lever 8hanging bracket 9motor lamp tray I controller remote control 13 wire cap 14self-tapping screw 15 expansion screws



Assemble the blades

Remove the 10 marked screws from the motor (9) to prepare for assemble the blades



Assemble the blades (4) with the 10 screws to the motor (9)

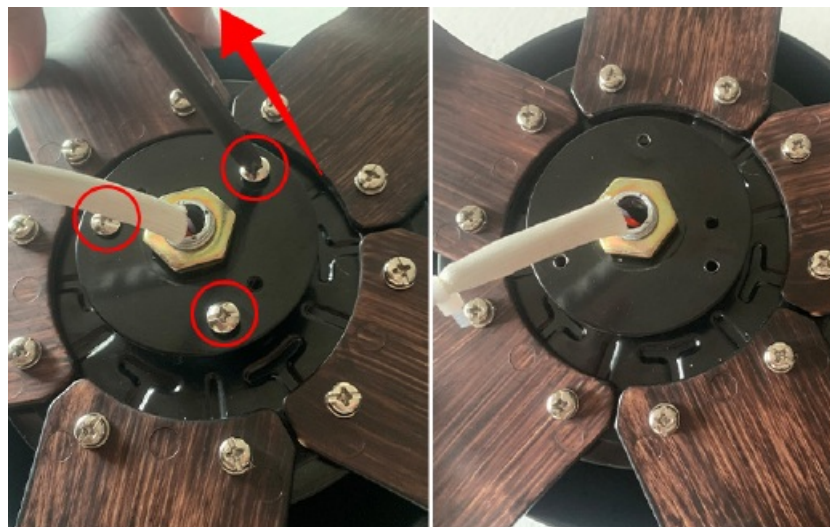


Assemble the blades with the 10 screws like this



Assemble the lamp tray (10)

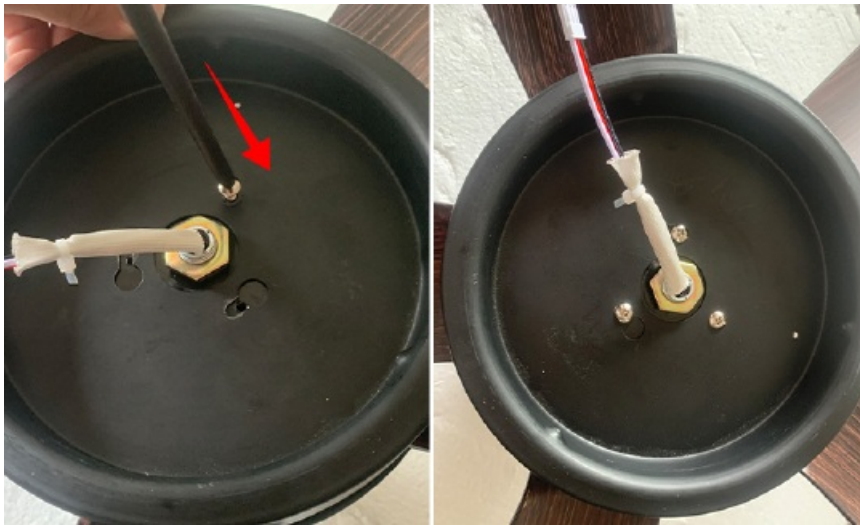
Firstly remove the marked 3 screws from the motor



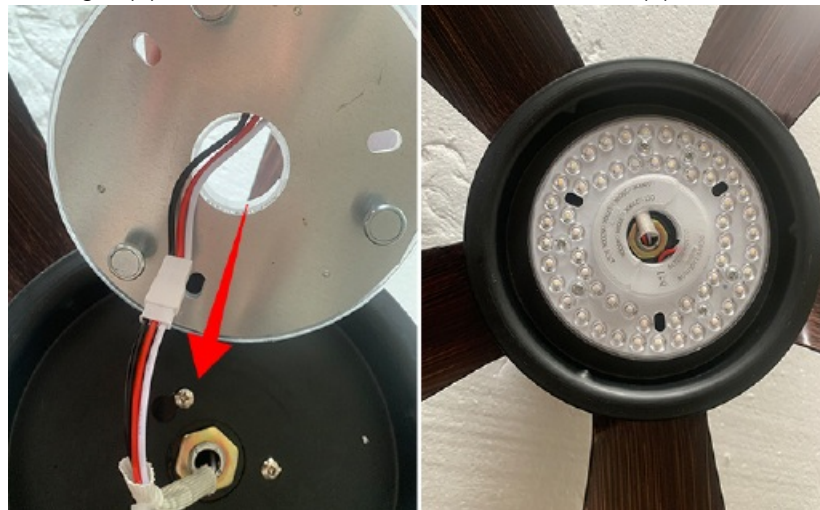
Secondly, prepare these parts



Assemble the lamp try 10) to the motor (9) with the 3 screws that just removed in last step.



Connect the wires from the light (3) to the wires on the bottom of the motor (9).



Assemble the hanging parts

the small hanging cup(O), the big honing cup (2), a hanging lever (either 6 or 0 as per your requirements)



Firstly, remove the needle at the bottom of the lever; Secondly, thread the 2 hanging cups (• & 2) into the lever from the bottom of lever to the top like the picture shows.



Make the wire on the motor go across the lever like the picture shows



Insert the lever into the motor, then insert the needle/pin, and secured with the screws



Assemble the light cover (5)

Align the light cover (5) and put it on, gently rotate the cover and tighten it securely with the lamp tray (10)



Assemble the hanging bracket (8)

on your ceiling or roof with the Expansion Screws (15).



between leach hole shing matizehe hanstance bracket.



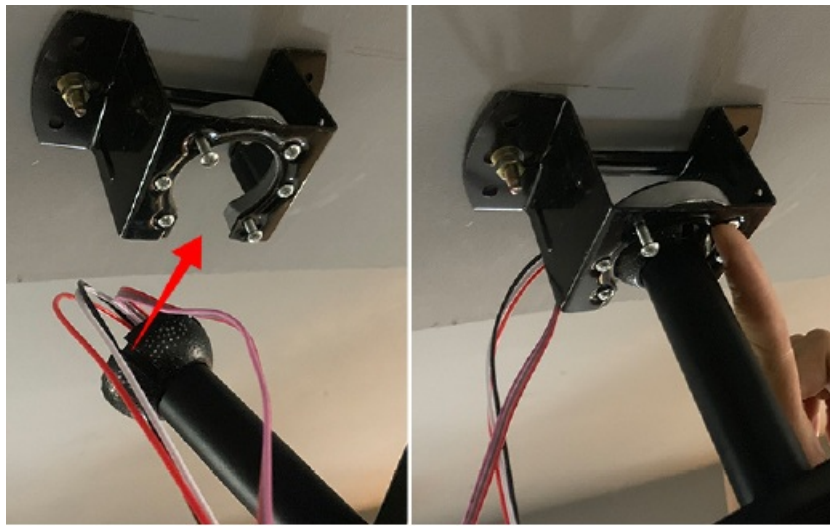
Hammer the 4 expansion screws into the holes you just drilled.



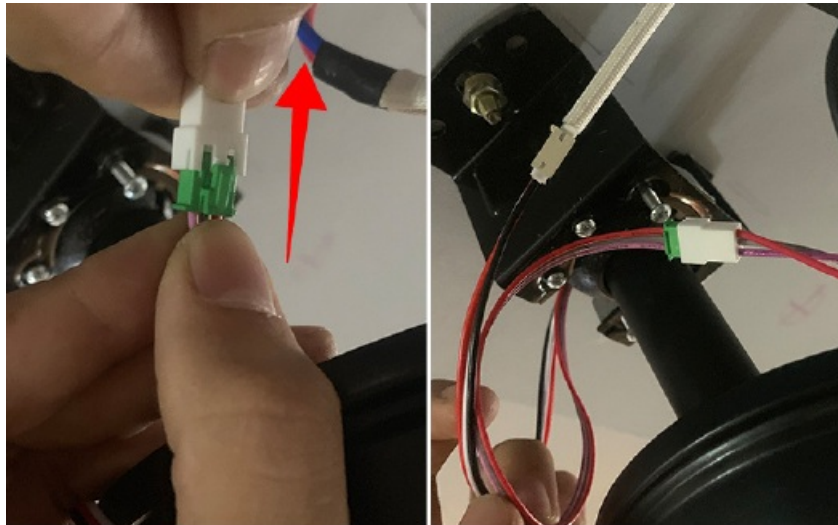
Assemble and tighten the hanging bracket.



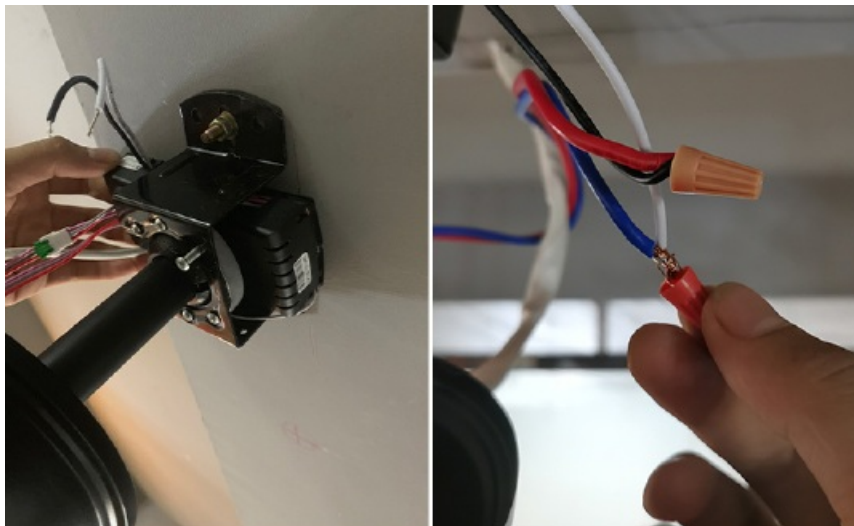
Put the ceiling fan which well assembled on the hanging bracket, gently rotate the lever to make it perfect fixed on the bracket.



Connect the wires on the controller (1) with the ceiling fan and your L & N line.



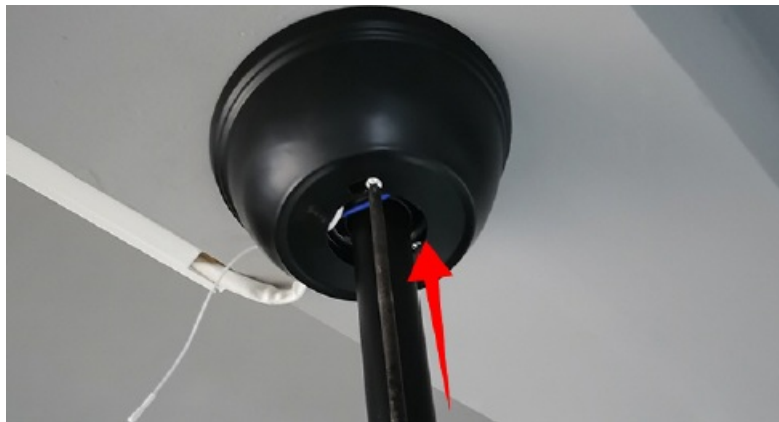
Put the controller on the bracket after all wires well connected



Sort the wires and push the big hanging cup to the top to cover all the wires and parts. Gently rotate and tighten the cup and lever.



Fix and tighten the screws outside the big hanging cup 2 to avoid it wobbling.



Documents / Resources

[illegible]



Remove the old fan's mounting bracket and screws from the ceiling.



Prepare the new fan's mounting bracket by removing the cap screw and washer.



Assemble the mounting bracket to the new fan's motor housing.



Connect the new fan's power wires to the existing ceiling wiring.



Attach the new fan's mounting bracket to the ceiling using the provided screws.



Mount the new fan's motor housing to the mounting bracket.



Attach the new fan's light fixture to the motor housing.



Turn on the power and test the fan and light operation.



Mount the new fan's light fixture to the motor housing.



Mount the new fan's light fixture to the motor housing.



Mount the new fan's light fixture to the motor housing.



Mount the new fan's light fixture to the motor housing.



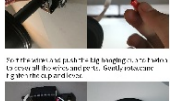
Mount the new fan's light fixture to the motor housing.



Mount the new fan's light fixture to the motor housing.



Mount the new fan's light fixture to the motor housing.



Mount the new fan's light fixture to the motor housing.

[CAIROCK Ceiling Fans with Lights Remote and App Control](#) [pdf] User Guide

Ceiling Fans with Lights Remote and App Control, Ceiling, Fans with Lights Remote and App Control, Remote and App Control, App Control



Insert the sensor outside the sensor cap. If it does not fit, it will not work.



References

- [User Manual](#)

[Manuals+](#), [Privacy Policy](#)