

**CADAC Compact 30 Gas and Regulator Summary**



# CADAC Compact 30 Gas and Regulator Summary Installation Guide

[Home](#) » [CADAC](#) » CADAC Compact 30 Gas and Regulator Summary Installation Guide 

## Contents

- [1 CADAC Compact 30 Gas and Regulator Summary](#)
- [2 Product Information](#)
- [3 POWER FOR YOUR OUTDOOR LIVING](#)
- [4 GAS SUPPLY OPTIONS FOR CADAC BARBECUES](#)
- [5 WHY CADAC REGULATORS](#)
- [6 PROPANE](#)
- [7 CAMPINGAZ](#)
- [8 BUTANE](#)
- [9 GAS LEAK SAFETY TESTING](#)
- [10 THREADED VALVE CARTRIDGE](#)
- [11 BAYONET CARTRIDGE](#)
- [12 TAILPIECE CONNECTIONS](#)
- [13 Documents / Resources](#)
  - [13.1 References](#)



**CADAC Compact 30 Gas and Regulator Summary**



## Product Information

### Specifications

- **Gas Type:** Propane or Butane
- **Regulator Pressure:** 28-30mBar (Butane), 37mBar (Propane)
- **Safety Features:** Excess Flow Valve (EFV)
- **Hose Length:** 85cm (Overflow Regulators), 2m (Standard Regulators)
- **Quick Release (QR) Fitting:** Yes

### Frequently Asked Questions

- **Q:** Can I use Campingaz bottles with CADAC barbecues?
  - **A:** Campingaz bottles require a specific screw-on regulator. Ensure the regulator is Campingaz specific for proper usage.

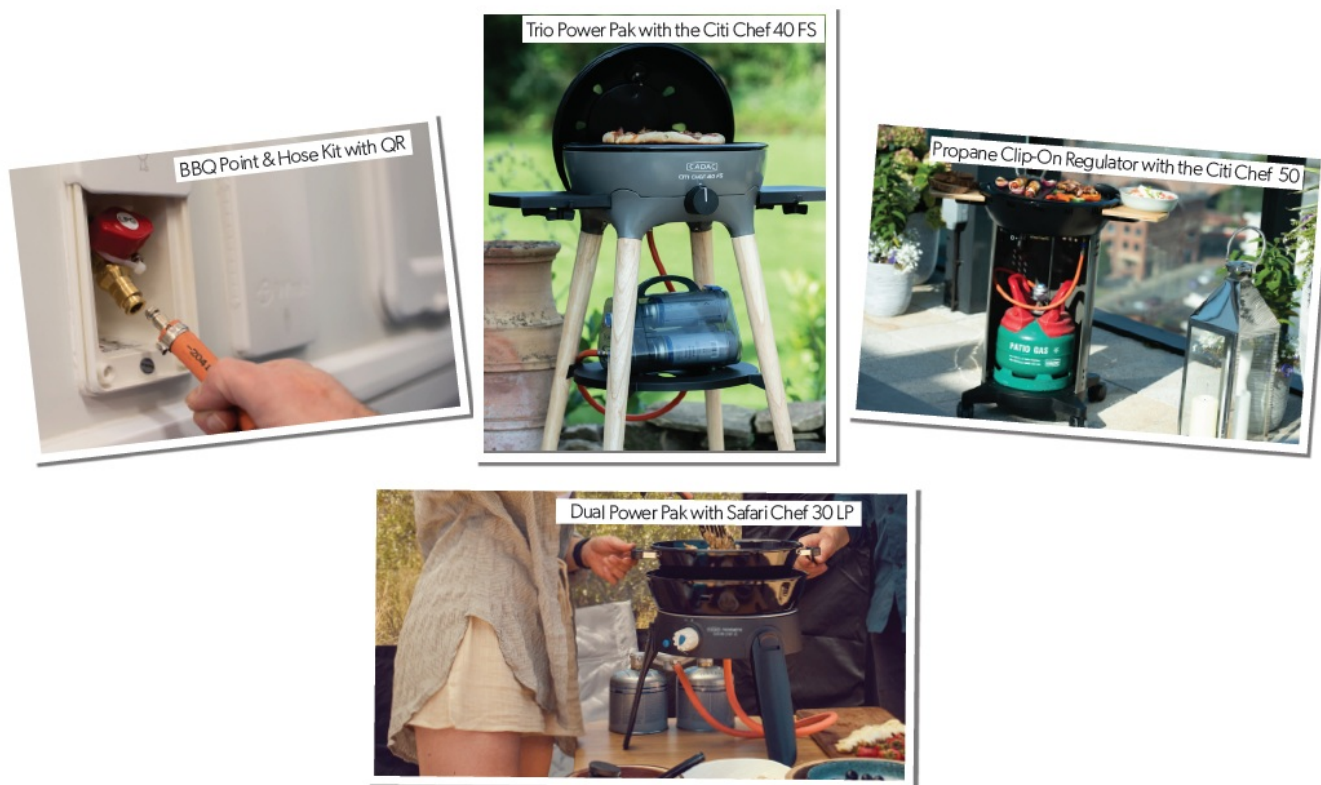
## POWER FOR YOUR OUTDOOR LIVING

Whether it's a picnic at the beach, weekend away in the camper or a party on the patio, the CADAC range offers a compact and convenient gas supply to suit every need.

All CADAC's gas barbecues are Low Pressure (LP), with the exception of the (direct) High Pressure (HP) Safari Chef 30 and the Safari Chef Compact 30.

CADAC LP barbecues will run off either Butane or Propane gas, which regulates between 28-30mBar (Butane) and 37mBar (Propane).

People are often confused by the different regulators but there is no need to be, as regulating your gas supply is as simple as buying a regulator that matches your gas bottle.



## GAS SUPPLY OPTIONS FOR CADAC BARBECUES

GAS SUPPLY OPTI ONS	CITI CHE F RANGE	SAFARI C HEF 30 L P	SAFARI C HEF 30 HP	SAFARI CH EF 30 COM PACT	GRILLO CHEF 40	CARRI CH EF 40/50	2 COOK
LPG Cylinder	•	•			•	•	•
Dual PowerPak	•	•			•	•	•
Trio PowerPak	•	•			•	•	•
Threaded Gas Cart ridge – Regulator	•	•			•	•	•
Threaded Gas Cart ridge – Direct			•				
Bayonet Gas Cartri dge – Direct				•			

## LP GAS REGULATED SUPPLY



DUAL POWER PAK



THREADED  
CARTRIDGE  
REGULATOR



TRIO POWER PAK



REFILLABLE  
GAS CYLINDERS  
- 2M HOSE &  
CLAMP



REFILLABLE  
GAS CYLINDERS -  
OVERFLOW LEVEL  
INDICATOR WITH  
QR



EXTERNAL HOOK UP ON A  
LEISURE VEHICLE  
**\*Not compatible with a  
Bullfinch hook-up**

HP (DIRECT) PRESSURE SCREWS DIRECTLY INTO UNIT



THREADED CARTRIDGE 500G  
**\*Safari Chef 30 HP**



BAYONET CARTRIDGE 227G  
**\*Safari Chef 30 Compact**

## WHY CADAC REGULATORS

- To maximise safety, all Cadac's cylinder regulators are factory fitted with a crimped hose and the added safety feature of an Excess Flow Valve (EFV) comes as standard.

- EFV is an automatic hose safety feature that cuts off 90% of gas flow if the hose is compromised.
- CADAC Overflow Regulators come with an 85cm crimped hose and QR (quick release) fitting.
- CADAC Regulators come with a 2m crimped hose and a hand tighten clamp.

## PROPANE

- Propane performs consistently well throughout the year.
- Propane Patio Gas is the most obvious, safe and popular choice when powering gas BBQ's.
- Propane Patio Gas requires a Clip-On Propane Regulator, the on/off lever makes connection to the refillable bottle clean and easy.
- Other Propane Gas Bottles (not Patio Gas) may require a Spanner Screw-On Regulator. These are generally red cylinders.

### PROPANE CLIP-ON



#### **PROPANE CLIP-ON O/F REGULATOR QR**



**8516-FL-QR**

Suitable for Calor Patio 5kg, Flo 6/11kg, Gaslight 10/10kg. Complete with 85cm hose crimped to regulator and Quick Release fitting. Overflow/level indicator allows visual gas level monitoring and convenient leak testing.



### **PROPANE CLIP-ON REGULATOR 2M**



**8516-2M**

Suitable for most butane cylinders with clip-on attachment. Complete with 2m hose crimped to regulator and hand tighten clamp.

### **PROPANE POL SCREW-ON**



### **PROPANE POL O/F REGULATOR QR**



**8518-FL-QR**

Suitable for Calor 3.9/6/13/19/47kg, Calor Lite 6kg, Flo 3.9/6/11/19kg.  
Complete with 85cm hose crimped to regulator and Quick Release fitting. Overflow/level indicator allows visual gas level monitoring and convenient leak testing.



### **PROPANE POL REGULATOR 2M**



**8518-2M**

Suitable for most butane cylinders with POL attachment.  
Complete with 2m hose crimped to regulator and hand  
tighten clamp.

## **CAMPINGGAZ**



- Intended for regular use or for extended operating time.
- Available and can be exchanged in most European countries.
- The most popular Campingaz bottle is the 907.
- The Campingaz bottles are filled with Butane however, unlike traditional blue Butane bottles, Campingaz bottles require a Campingaz specific screw on regulator. These regulators need not be Campingaz branded however they must be Campingaz specific.

### **CG OVERFLOW REGULATOR QR**



**8515-FL-QR**

Suitable for Camping Gaz 901/904/907.  
Complete with 85cm hose crimped to regulator and Quick Release fitting. Overflow/level indicator allows visual gas level monitoring and convenient leak testing.

### **CG SCREW-ON REGULATOR 2M**



**8515-2M**

Suitable for Camping Gaz 901/904/907.  
Complete with 2m hose crimped to regulator and hand tighten clamp.

## **BUTANE**



- Butane gas bottles are widely used for camping or caravanning trips, or fuelling portable gas heaters.
- Butane can struggle in cold weather as the gas itself tends to freeze more easily.
- Butane is recommended for summer use only.
- Most Butane bottles require a Clip-On Regulator, with an easy switch on and off lever.
- Simply attach the hose and secure with jubilee clips.

### **BUTANE CLIP-ON O/F REGULATOR QR**



**8517-FL-QR**

Suitable for Calor 7/12kg, Flogas 5/7/13kg.  
Complete with 85cm hose crimped to regulator and Quick Release fitting. Overflow/level indicator allows visual gas level monitoring and convenient leak testing.

### **BUTANE CLIP-ON REGULATOR 2M**



**8517-2M**

Suitable for most butane cylinders.  
Complete with 2m hose crimped to regulator and hand tighten clamp.

## GAS LEAK SAFETY TESTING

As a safety precaution, a gas leak test must be performed each time before using your CADAC BBQ. This ensures that all fittings are secure and no gas is leaking. An undetected gas leak is likely to result in a fire.

### As a safety precaution:

- Test the cylinder valve for leaks each time the cylinder is filled
- Test for leaks every time you connect a gas fitting
- Do not smoke at any time while testing
- Never test for leaks with a lit match or open flame
- Test for leaks outdoors

### The Test:

1. Extinguish any open flame or cigarettes in the area
2. Be sure that cylinder valve and appliance valves are “OFF”
3. Connect LP gas
4. Prepare a soap solution of 50% Soap and 50% water
5. Open cylinder valve slowly
6. Brush the soap solution on each connection
7. A leak is identified by the appearance of bubbles at the connection
8. If a leak is detected, close the gas cylinder Valve to OFF. Tighten the connection and retest
9. If the leak persists, contact your dealer for assistance. Do not attempt to operate the appliance if a leak is present

## THREADED VALVE CARTRIDGE



- A popular lightweight option are Threaded Valve Cartridges.
- Each individual 500g cartridge lasts for 4 hours approx on full power.

- These cartridges are favoured by many as they are a cheap and convenient option when compared with refillable cylinders which can be expensive to purchase and refill.
- These butane/propane mix cartridges are fitted with a standard EN417 threaded self-sealing safety valve.
- There are three main ways in which Threaded Cartridges can be used to power your barbecue.

#### **THREADED CARTRIDGE REGULATOR (343/343-QR)**



- The Threaded Cartridge Regulator is used most often with the Safari Chef 30 LP and 2 Cook 2 Pro Deluxe barbecues, two of our smallest appliances.
- This regulator works off 1 x 500g Threaded Valve Cartridge.
- The regulator itself simply screws into the top of the cartridge and the hose then goes to the barbecue, using either the handwheel tightening (343) or the Quick Release fitting (343-QR).

#### **DUAL POWER PAK (346-10-UK/346-10-QR-UK)**

346-10-UK  
Handwheel Tightening



346-10-QR-UK  
Quick Release Fitting



- The Dual Power Pak operates from 2 x 500g Threaded Valve Cartridges simultaneously, continuously regulating to 28 mBar.
- This therefore results in approx. 8 hours worth of gas when used on full power.
- With the gas being regulated simultaneously from both cartridges, this does not mean that one cartridge empties before the other, both are drained at the same time.

### SAFARI CHEF 30 HP (HIGH PRESSURE)



- The one exception to the CADAC range is the Safari Chef 30 High Pressure (HP).
- This barbecue runs off the threaded valve cartridges, with the cartridge simply screwing into the underside of the barbecue.
- This is favoured when the lightest weight option is desired, and to some extent the most portable option.

### BAYONET CARTRIDGE



- At just 227g, the Bayonet Cartridges are one of the most portable disposable gas options for the CADAC range.
- Each 227g cartridge lasts for approximately 2 hours on full power, and when using 3 together with the Trio Power Pak you will get approximately 7 hours of use.
- These butane cartridges are fitted with a bayonet connection (SSN-29 flange valve) and the push & turn system makes it easy to attach the cartridges.
- There are two ways in which Bayonet Cartridges can be used to power your barbecue.

#### **TRIO POWER PAK (370/370-QR)**



- The Trio Power Pak operates from 3 x 227g Bayonet Cartridges.
- It is suitable for use with the full range of CADAC LP BBQ's.
- The housing of the Trio Power Pak has a detachable back, so the cartridges can be easily inserted and clicked into place.
- You can easily (dis)connect the gas hose from the Trio Power Pak with the integrated Quick Release coupling, and the other end of the 150cm hose then goes in to the barbecue itself, using either the handwheel tightening (370) or the Quick Release fitting (370-QR).



370-QR  
Quick Release Fitting



370  
Handwheel Tightening



### SAFARI CHEF 30 COMPACT (6525L1-10)



- The Safari Chef 30 runs from a single 227g Bayonet Cartridge.
- Simply insert the cartridge directly to the unit and secure with an easy locking system.
- At less than 4kg, this table top barbecue is considered the most compact in the CADAC range, offering the ultimate convenience and portability.

### TAILPIECE CONNECTIONS

- The tailpiece is the connector between the gas supply (gas, regulator and pipe) and the barbecue itself.

### 8MM HANDWHEEL ASSEMBLY TAILPIECE



- The Handwheel Assembly comes with all CADAC LP BBQs as standard.
- No need for spanners, just use the (blue) handwheel to tighten the gas connection.
- The Handwheel Assembly must be fastened securely to the pipe with a jubilee clip.

## QUICK RELEASE TAILPIECES



338  
Quick Release




338-1  
2 Nut Quick Release



338-2  
90 ° Rotating Quick Release

- The Quick Release has a male end and a female end. The male end stays permanently on the BBQ and the female end permanently on the hose, fastened with a jubilee clip.
- This allows for a quick push on/off action, making connecting/disconnecting the gas supply easy.
- CADAC offer 3 types of QR Couplings, including a 2 Nut Quick Release which has two male couplings, allowing for ease of switching between appliances from a single gas supply.

## Documents / Resources

 <p><b>GAS &amp; REGULATOR SUMMARY</b></p> 	<p><a href="#">CADAC Compact 30 Gas and Regulator Summary</a> [pdf] Installation Guide</p> <p>Compact 30 Gas and Regulator Summary, Compact 30, Gas and Regulator Summary, Regulator Summary</p>
---	--

## References

- [User Manual](#)