



CAD CX2 Connect II USB Audio Interface User Guide

[Home](#) » [CAD](#) » CAD CX2 Connect II USB Audio Interface User Guide 

Contents

- [1 CAD CX2 Connect II USB Audio Interface](#)
- [2 Introduction](#)
- [3 Controls](#)
- [4 Specifications](#)
- [5 Applications](#)
- [6 Computer Interface](#)
- [7 Two-Year Limited Warranty](#)
- [8 Documents / Resources](#)
 - [8.1 References](#)
- [9 Related Posts](#)



CAD CX2 Connect II USB Audio Interface



Introduction

Record at home or on the go with the CAD Audio Connect II USB Audio Interface. The Connect II features 2 XLR combo inputs which can accommodate either a microphone or instrument-level audio signal, making it a perfect solution for the singer/songwriter; or a vocalist with an accompanying instrumentalist. The CX2 offers 48V phantom power and is fully USB powered, no external power source required. You'll get high-quality professional recordings with 24-bit/96kHz digital resolution, and the rugged all-metal body is built to withstand the toughest conditions.

The CX2 contains the following features:

- Value-packed 2-channel USB audio interface for home or mobile recording
- Record at professional-level 24-bit/96kHz resolution
- Includes +48V phantom power for use with studio condenser microphones
- USB bus powered
- Two preamps with combo inputs for recording either microphone or instrument-level audio
- Compatible with nearly any recording software on Windows® or Macintosh® operating systems



Controls

1. Input Channel 1 – This input accepts both XLR and 1/4" (6.35mm) style plugs. Connect microphone, instrument, or line-level signal source here. The 1/4" (6.35mm) plug may be of TRS (tip-ring-sleeve) balanced or TS (tip-sleeve) unbalanced configuration.
2. Instrument/Line switch for channel 1. Select to optimize level and impedance for 1/4" (6.5mm) signal source.
3. Input Channel 2 – This input accepts both XLR and 1/4" (6.35mm) style plugs. Connect microphone, instrument, or line-level signal source here. The 1/4" (6.35mm) plug may be of TRS (tip-ring-sleeve) balanced or TS (tip-sleeve) unbalanced configuration.
4. Instrument/Line switch for channel 2. Select to optimize level and impedance for 1/4" (6.35mm) signal source.
5. MONO/STEREO – MONO mode sums channel 1 and channel 2 inputs to record left and right (useful for pod cast interviews). STEREO mode passes channel 1 to record left and channel 2 to record right (for musical tracking or live stereo recording).
6. POWER – This light indicates that Connect II is being powered by USB.
7. PHONES – This knob controls headphone monitor volume.
8. GAIN – This knob controls the gain (amplification factor) for channel 1.
9. SIG – This light indicates that an audio signal is present on channel 1. CLIP – This light indicates that the signal may be overloading channel 1.

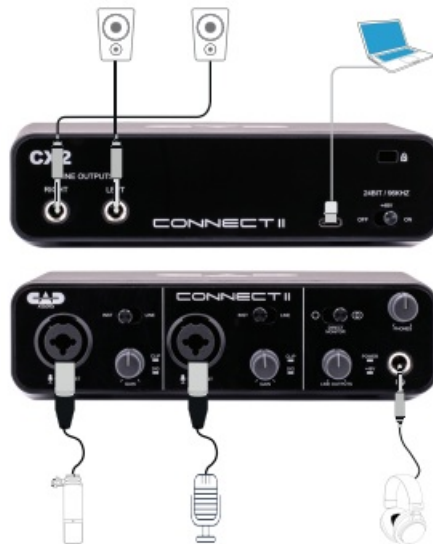
10. GAIN – This knob controls the gain (amplification factor) for channel 2.
11. SIG – This light indicates that an audio signal is present on channel 2. CLIP – This light indicates that the signal may be overloading channel 2.
12. OUTPUT – This knob controls the LINE OUTPUT signal level.
13. +48V – This light indicates that 48V phantom power is present at the XLR input connectors.
14. Headphone output – Connect your monitor headphones here. This is a 1/4" (6.35mm) TRS (tip-ring-sleeve) stereo jack.
15. Kensington® Security Slot. Connect a Kensington® compatible security device here to help protect your interface.
16. LINE OUTPUTS – These are the left and right line-level signal outputs. These jacks accept TS (tip-sleeve) and TRS (tip-ring-sleeve) 1/4" (6.35mm) plugs.
17. USB 2.0 Type-C connector. Use this to connect to your computer via USB.
18. +48V – This switch enables +48V phantom power at the XLR input connectors.

Specifications

- **Frequency Response** :20Hz-20kHz
- **Resolution/Sample Rate** :24Bit /96kHz
- **Phantom Power** .:+48V
- **Dynamic Range** : 118dB (A-weighted)
- **EIN** : -110dBu (A-weighted) Max Input Level
- **Mic.:** +8bBu
- **Instrument** : +11dBu
- **Line:** +19dBu Input Impedance
- **Mic.:** 3k ohms
- **Instrument** : 1M ohms
- **Line:** 20k ohms
- **Gain Range** : 50dB
- **Weight:** 1.1lbs (0.5kg)
- **Dims** : 7.5" x 6" x 2.1" (19cm x 15.3cm x 5.4cm)

Applications

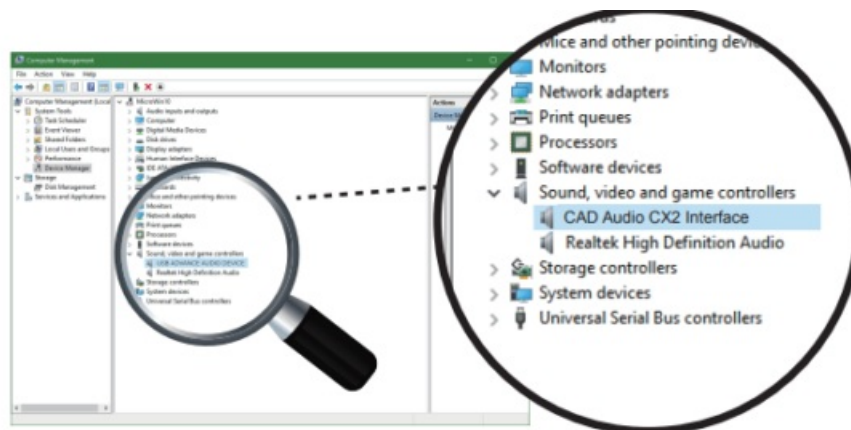




Computer Interface

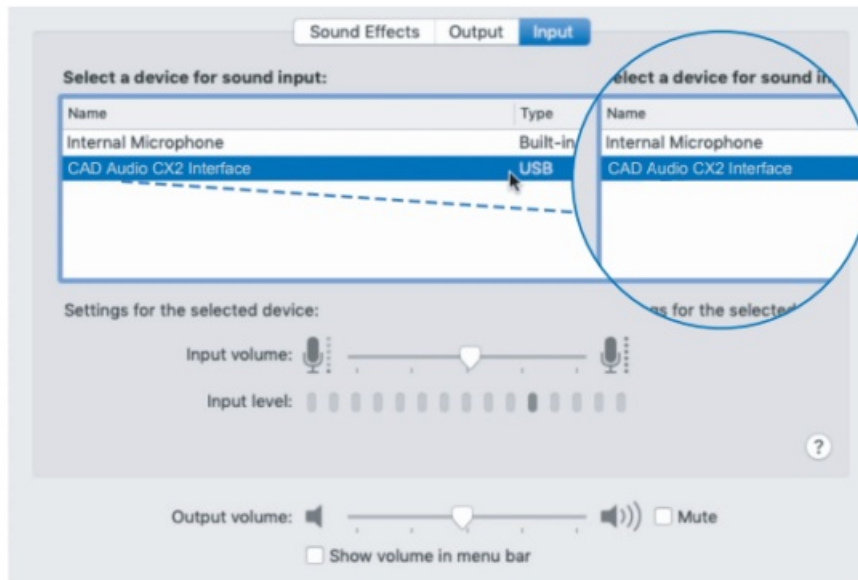
Windows®:

- Step 1: Connect this product with computer via USB cable
- Step 2: Computer open device manager
- Step 3: The selected “Sound, video and game controllers” shows the device name: “CAD Audio CX2 Interface” of the product



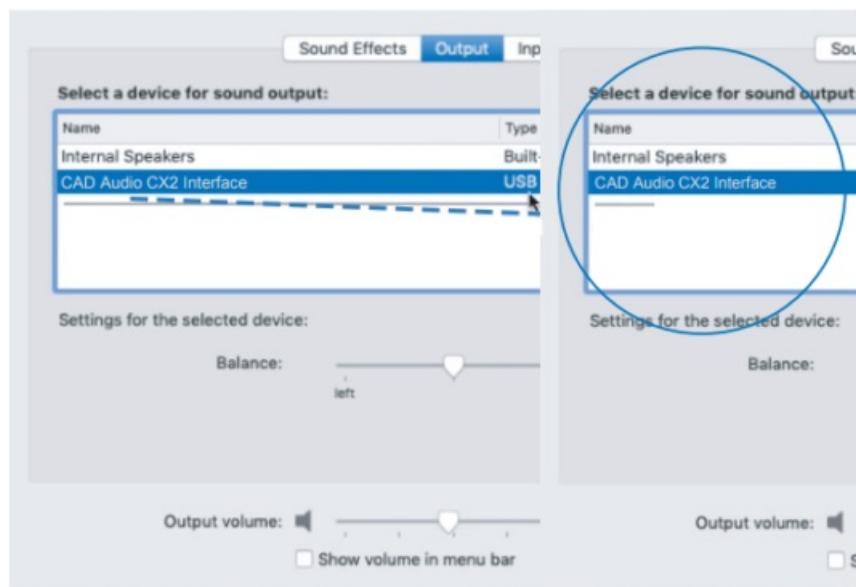
Macintosh®:

- Step 1: Open the Mac OS System Preferences.
- Step 2: Select “Sound”, then “Input”.
- Step 3: Select the device “CAD Audio CX2 Interface” for sound input.



Macintosh®:

When you need to monitor through this product, open the Mac OS System Preferences, select “Sound”, then “Output”. Select the device “CAD Audio CX2 Interface” for sound output.



Two-Year Limited Warranty

CAD Audio hereby warrants that this product will be free of defects in material and workmanship for a period of two years from the date of purchase. In the unlikely event that a defect occurs, CAD will, at its option, either repair or replace with a new unit of equal or greater value. In the event that a suitable replacement is unavailable, CAD Audio may elect to reimburse owner for the cost of local repairs or issue a refund in the amount of the original purchase price. Items must be purchased from an authorized CAD Audio dealer, and the warranty is not transferable from the original owner. Please retain proof of purchase to validate the purchase date and include it with any warranty claim.

This warranty excludes exterior finish or appearance, damage from abuse, misuse of the product, use contrary to CAD’s instructions or unauthorized repair. All implied warranties, merchantability, or fitness for a particular purpose is hereby disclaimed and CAD hereby disclaims liability for incidental, special or consequential damages resulting from the use or unavailability of this product.

This warranty gives you specific legal rights and you may have other rights that vary from state to state. Some

states do not allow the exclusion or limitation of incidental or consequential damages or limitations on how long an implied warranty lasts, so the above exclusions and limitations may not apply to you.

Note: No other warranty, written or oral is authorized by CAD Audio. To initiate a warranty claim, please contact American Music and Sound at 1-800-431-2609 to obtain a return authorization number and shipping instructions.

- A return authorization is required for all returns. RETURNS WITHOUT A PRE-APPROVED RETURN AUTHORIZATION NUMBER WILL BE REFUSED.
- Please use at least 3 inches of padding surrounding the product for protection during shipment
- Retain your tracking number until your warranty claim has been resolved
- We recommend using an insured shipping method in case of loss or damage during shipment
If outside the United States, contact your local dealer or distributor for warranty details.

CAD Audio

6573 Cochran Rd., Bldg. I Solon, OH 44139 U.S.A. **Tel:** (440) 349-4900 **Fax:** (440) 248-4904
Sales: 800-762-9266 cadaudio.com

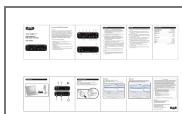
Distributed Worldwide by American Music and Sound 925 Broadbeck Drive, Suite 220

Newbury Park, CA 91320 U.S.A.

Tel: (800) 431-2609 **Fax:** (800) 431-3129

©2022 CAD Audio Rev00 1-22

Documents / Resources



[CAD CX2 Connect II USB Audio Interface](#) [pdf] User Guide

CX2, Connect II, USB Audio Interface, Connect II USB Audio Interface, CX2 USB Audio Interface, CX2 Connect II USB Audio Interface

References

- [CAD AUDIO - The Brand Used by Professionals](#)