



c4i HDMI Video Capture User Manual

[Home](#) » [C4i](#) » c4i HDMI Video Capture User Manual 



USER MANUAL

HDMI Video Capture (4K@60Hz)
Enjoy the vivid world!

Contents

- [1 INTRODUCTION](#)
- [2 Features:](#)
- [3 Specifications:](#)
- [4 Operating and Connecting](#)
- [5 Application diagrams](#)
- [6 Package includes](#)
- [7 Documents / Resources](#)
 - [7.1 References](#)
- [8 Related Posts](#)

INTRODUCTION

The HDMI video capture can capture the HD video and audio signal. It can display the HD signal to the display or projector. It supports USB storage by computer at the same time.

The HDMI video capture also can separate the HD video and audio signal. The stripped coaxial or optical fiber digital audio can connect with an amplifier. The max resolution can be up to 4K/60HZ.



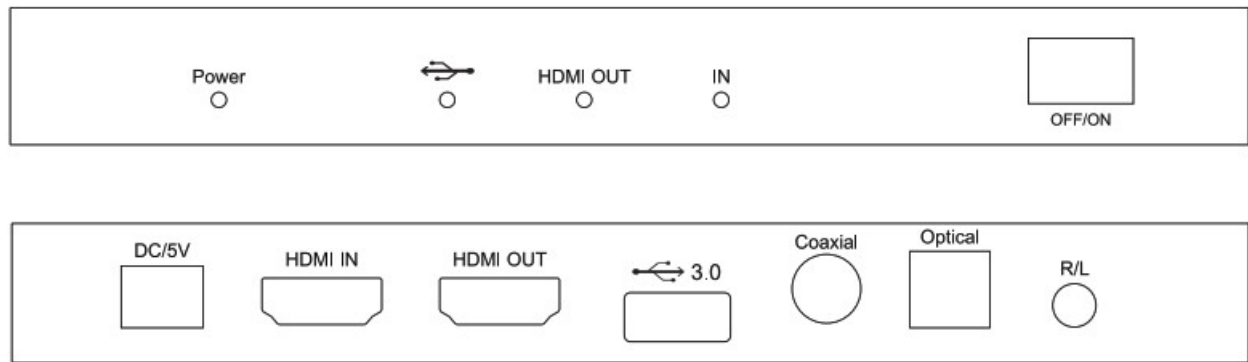
Features:

- Support max resolution 4K/60Hz
- Support the max baud rate of 6G and TMDS clock can be up to 600 MHz;
- Support deep color;
- Support AWG26 HDMI standard cable: HDMI input up to 8 meters, HDMI output up to 8 meters. (1080P and below resolution);
- Support USB 3.0 standard cable, output up to 1.5m;
- Support many capture software, such as VLC OBS Amcap;
- Conform to USB video 1.5 and audio 1.0 standards.

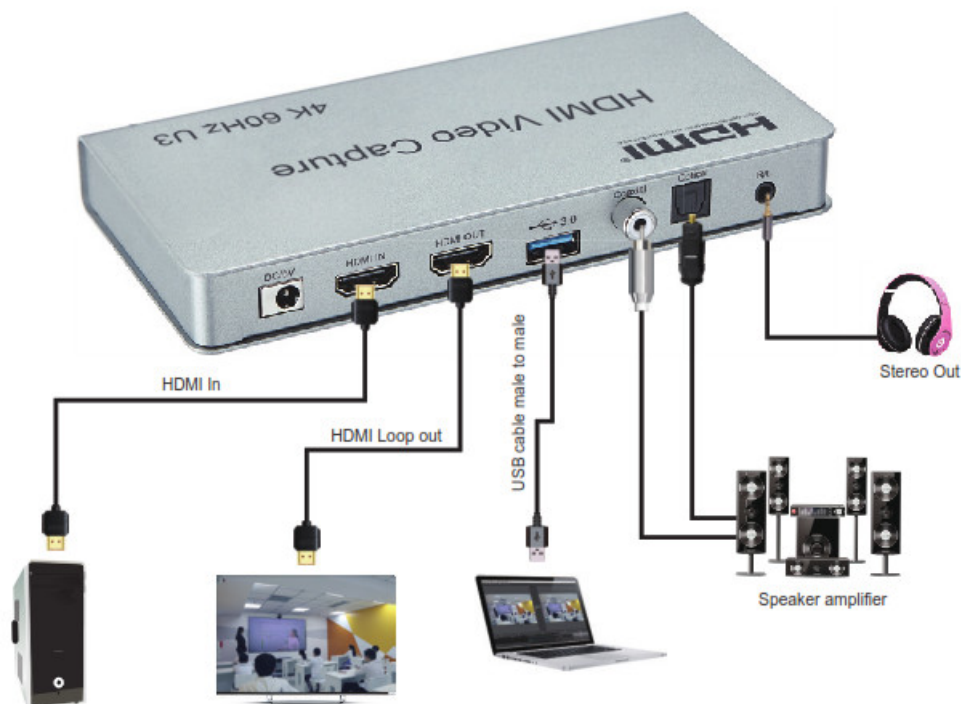
Specifications:

HDMI resolution	Up to 4K/60Hz
Support video format	MJPEG/YuY2
Support audio format.....	LPCM
Max bandwidth.....	600MHz
Max baud rate.....	6Gbps
Input cable distance.....	(1080p resolution) ≤8m AWG26 HDMI standard cable
Output cable distance.....	(1080p resolution) ≤8m AWG26 HDMI standard cable;
≤1.5m USB 3.0 standard cable	
Max working current.....	0.65A
Power adapter format	input AC (50Hz, 60Hz) 100V-240V; output: DC5V/1A
Operating temperature range.....	(-10 to +55°C)
Dimension (L x W x H).....	162x80x23 (mm)
Weight.....	420g

Operating and Connecting



Application diagrams

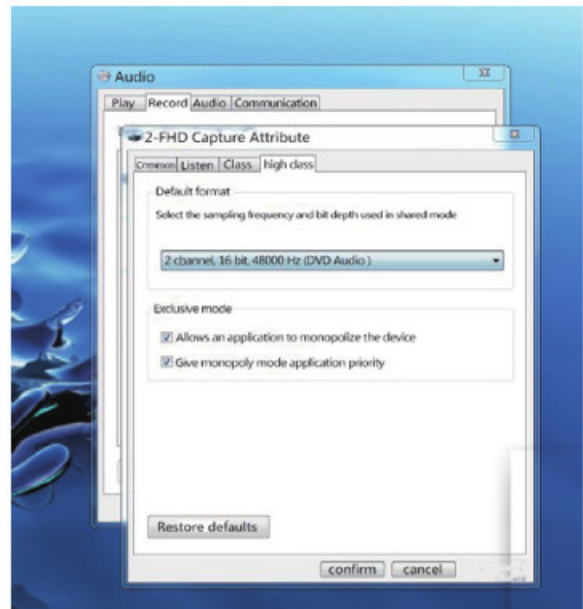
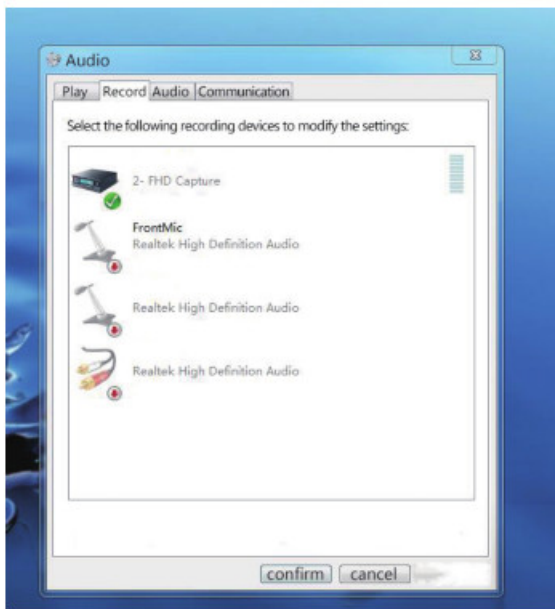


Connection and Operation

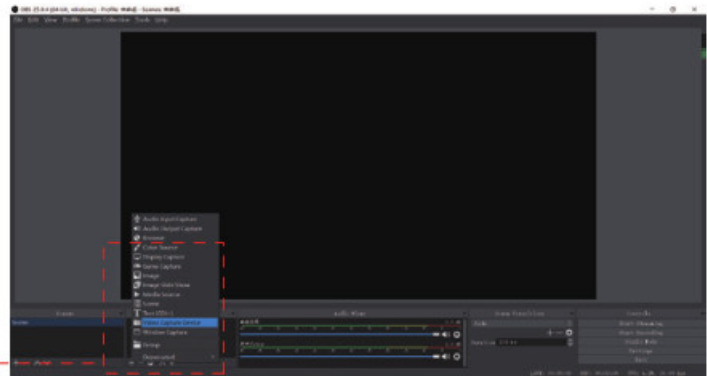
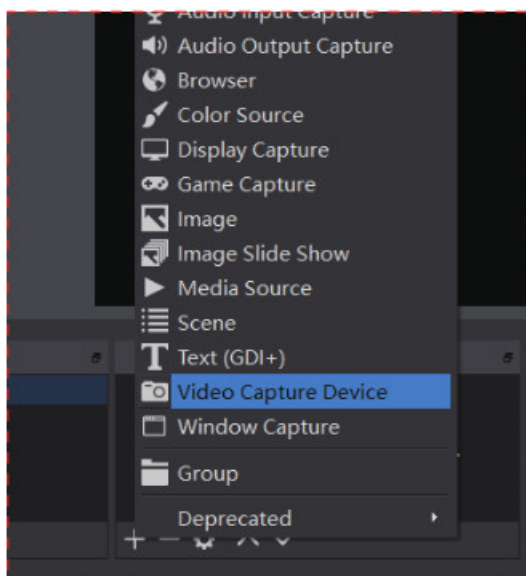
1. Connect the UHD signal source to the HDMI input of the video capture with one HDMI cable
2. Connect the display device to the HDMI output of the video capture with one HDMI cable
3. Connect the PC USB port to the USB output of the video capture with one USB 3.0 cable
4. Connect the 5V/1A power adapter to the video capture
5. Operation steps for USB video capture(OBS):

Operation Example as below:

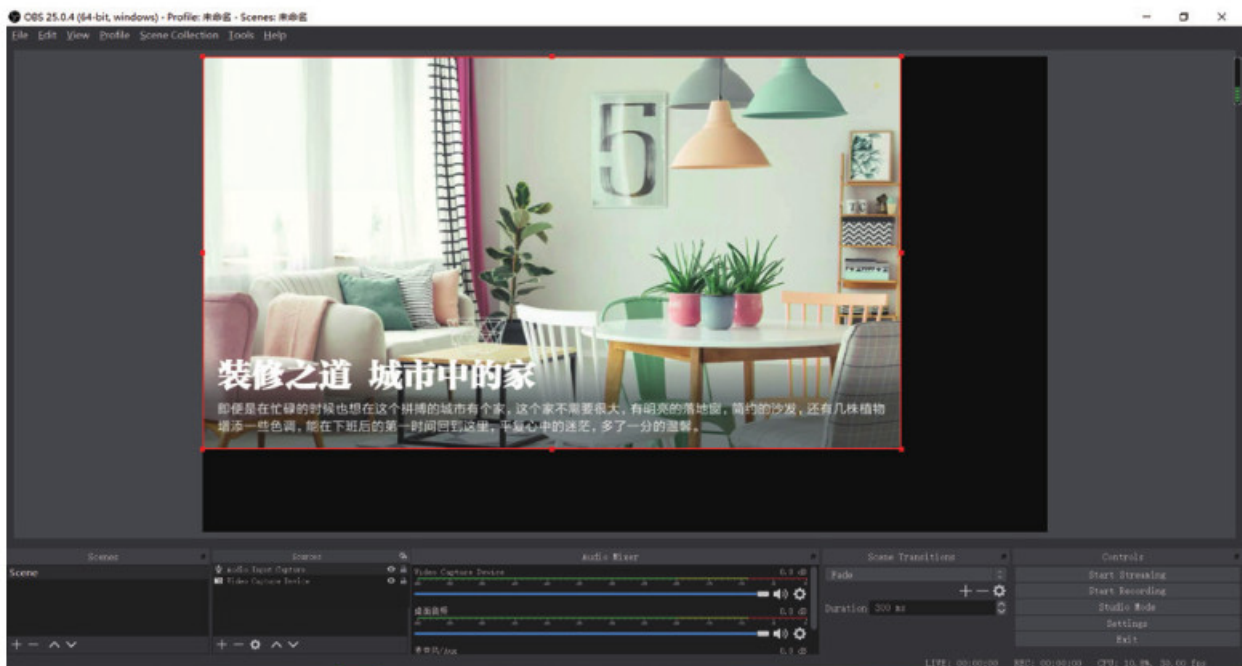
1. Choose the input audio sampling rate to be 48KHZ



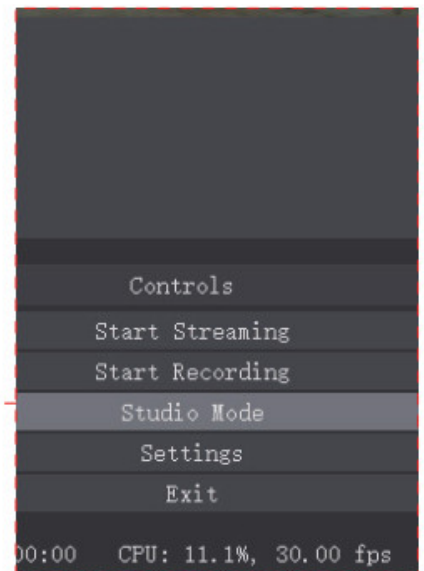
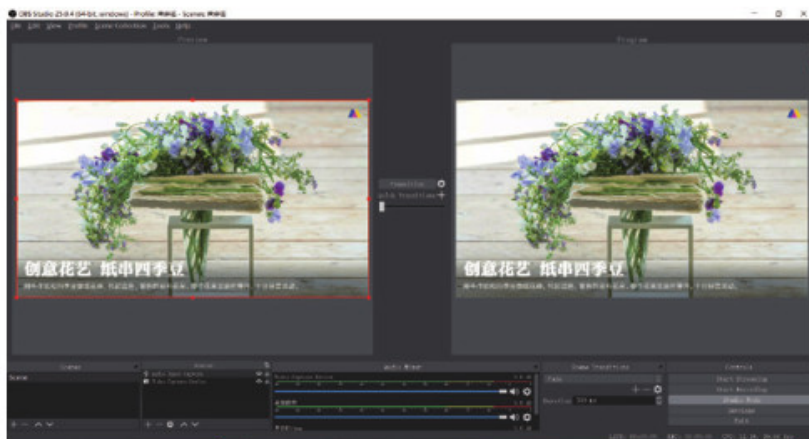
2. Add new sources, choose “ Video Capture Device ”



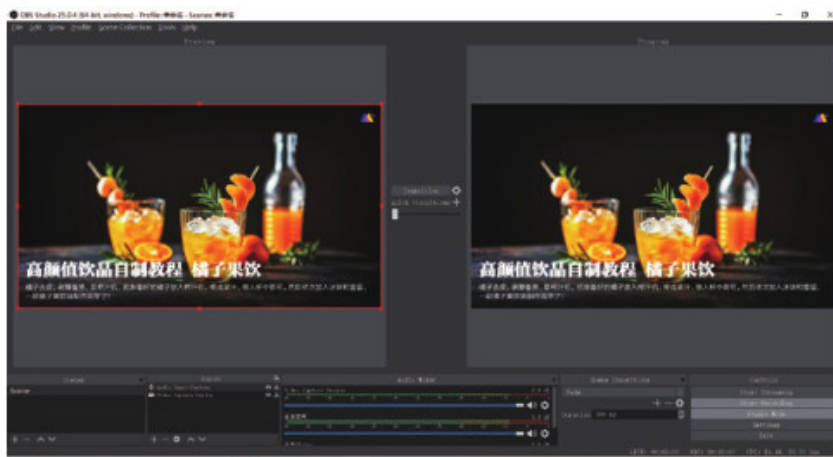
3. Set the size of the image.



4. Choose “Studio Mode”(double window).



5. Click “ Start Recording”



Note:

Computer hardware configuration requirements

CPU: PC i5-3400 or above NB i7-3537U 2.0GHZ or above


Graphics card: PC NVIDIA GT630 or above NC NVIDIA GT735M or above

Run memory: 4G RAM

Package includes

1. Video capture	1PCS
2. 5V/1A power adapter	1PCS
3. 1.5m USB3.0 cable	1PCS
4. User manual	1PCS

Documents / Resources

<div><div></div><div>USER MANUAL</div><div>HDMI Video Capture (4K@60Hz)</div><div>Enjoy the vivid world!</div></div>	<div><div>c4i HDMI Video Capture [pdf] User Manual</div><div>HDMI Video Capture</div></div>
---	---

References

[Manuals+.](#)