




C-Pen C610R-X2000 Reader Pen User Manual

[Home](#) » [C-PEN](#) » C-Pen C610R-X2000 Reader Pen User Manual 



C610R-X2000 Reader Pen
User Manual



READER2 QUICK START GUIDE

Contents

- 1 C610R-X2000 Reader Pen
- 2 Safety Precautions for Battery Usage
- 3 BATTERY maintenance and precautions
- 4 Declaration of Conformity
- 5 Documents / Resources
 - 5.1 References

C610R-X2000 Reader Pen

REGISTER your C-PEN to get notified about future updates cpen.com/contact/product-registration



<https://www.cpen.com/c-pen-product-registration/>

Congratulations to your advanced C-Pen Reader 2.

C-Pen Reader 2 is designed with the purpose of being a reading assistant, and the objective is to make you an independent reader. Whether you need to read questions in an exam, do your homework, or simply want to read your favorite novel, we hope reading becomes less challenging and more enjoyable.

C-Pen Reader 2 also supports literacy. The embedded word definition dictionaries make understanding so much easier.

The purpose of this guide is to get you started. It does not provide a complete description of all functions and settings as they change by each firmware upgrade we provide. Therefore, for latest and more complete information check our website www.cpen.com/products/reader2 and our YouTube channel cpen.com/youtube

Let's get started!

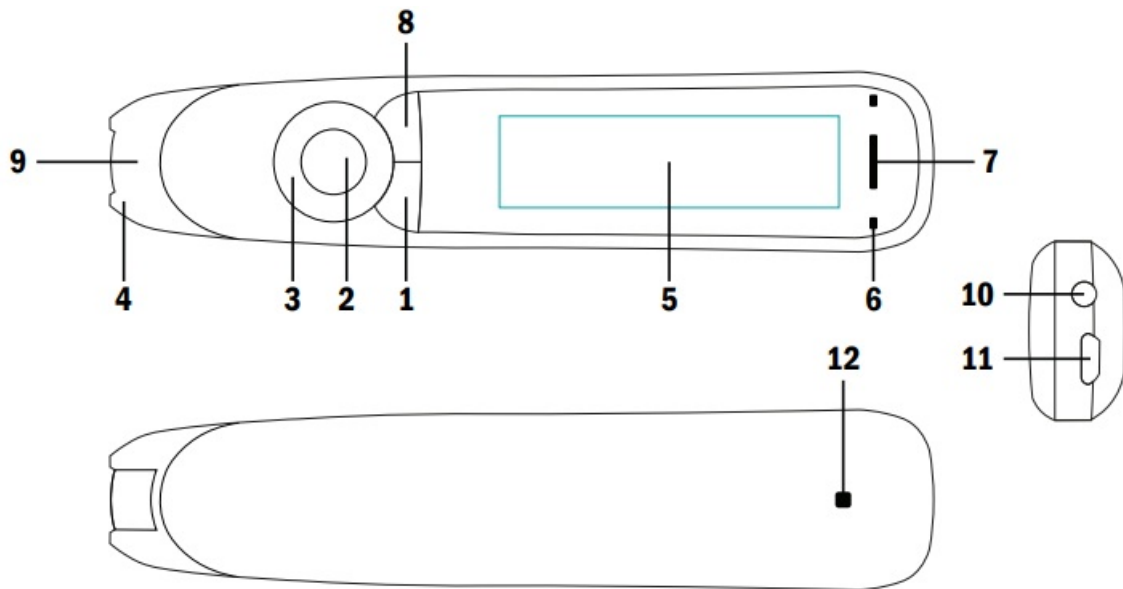
1. Press and hold the power button for 3 seconds, then release it. If the display doesn't light up, charge the battery for about 30 minutes and then give it a second try.
2. At first use, a guide will help you set up your C-Pen Reader 2. This includes settings for
 - Talking Menu (reads menu out loud)
 - Menu language (user interface language)
 - Scan language (language of text to scan)
 - Voice (as some languages support more than one accent)
 - Preferred dictionary
 - Left-/Right-handed (hand holding the pen)

After this, you reach the menu. Choose the function you want, for example C-Pen Reader 2, using the 4-way Nave button and the OK-button in the middle. Scan and listen to the text being read aloud to you. Press the OK button to listen to the text as many times as you want. Or press the MENU button to access options such as reading speed, volume, reading pauses, reading language and dictionaries. If you like, you can connect a pair of earphones so that only you can hear the C-Pen Reader 2.

How to scan

Hold the C-Pen Reader 2 almost straight up. Make sure that you do not press any buttons during a scan. The pen scans one (1) text line at a time and this text line shall be centered in between the two white nibs in the front of the pen. Scanning start and stop points are aligned with the edge of the transparent window. When the Scan Trigger is in touch with the paper, the scan light list up. Start moving the pen straight along the text line at a steady pace.

Buttons and connectors



1. Power On/Off & Back button: Press 3 seconds to power device on or off. Press briefly to use as cancel function in the user interface
2. OK button: When a dialog box or options list pops up, press this button to confirm the operation. The OK button is also used to trigger reading text out loud in Reader mode.
3. 4-way Nave button: Press buttons to move focus up, down, left, right.
4. Scan Trigger: Is automatically activated when the pen is in contact with the paper. It triggers scanning and turns on scan light.
5. Screen: The device's display screen.
6. Mic: Used to record voice memo.
7. Speaker: Used when text is read out loud. Muted when headphones are connected.
8. Menu button: Press this button to display context menu (like right mouse click on PC).
9. Scanning window: Frames the text to be scanned.
10. Headphone jack: A standard 3.5 mm headphone jack. Speaker is muted when headphones are connected.
11. Micro USB connector: Used for charging. To charge, connect to USB charger or computer USB port.
12. Reset button: Pressing this button resets the device. It is recommended to use this button only when the device cannot be turned off properly.

C-Pen Reader 2 functions

Unless otherwise stated, C-Pen Reader 2 is a standalone and self-contained product and works without being connected to any other device.

Please check out video guides (youtube.cpen.com) for more detailed description.

Talking menu

When turned on, all menu items are read aloud to support e.g., visually impaired users. Switch on or off under Settings in the main menu.

Reader function

Scan a word, line of text or paragraph and have the text read aloud to you. C-Pen Reader 2 can be set to read text automatically when scanned, or just read text on the screen when you press the OK button. When listening to the text, you can pause it by pressing the OK button, and the scanned text can be read out as many times as you like. Use the navigation buttons to select the starting point, then press the OK button and listen. When a specific word is selected, press and hold the OK button to zoom in on it and have it read aloud. You can also look the word up in a dictionary by long press OK button when a word is zoomed in.

Save scanned text

In Reader function, press MENU button and select Save to Library. The scanned text is then saved in a text file in C-Pen Reader 2's internal memory. The text file can be accessed in the Library/My Text Files and stored files can

be uploaded to a computer if C- Pen Reader 2 is connected via USB in U-disk mode. When using the Connect Desktop app (C-Pen Reader 2's companion app) on the computer, files may be shared, edited, or re-downloaded to the pen and accessed again in the Library (max. 64kB file size). A text file may also be opened, edited, and saved via the pen's user interface at any time later. It is possible to open a text file and have the content read aloud – like in Reader function. You can scan new text into the existing file, rename the file and delete words or entire sentences.

Definitions

C-Pen Reader 2 contains one or more monolingual dictionaries for the supported languages. You can enter this function and then scan one or more words. Use the navigation buttons to select the word you want to look up and the word's definition. Based on what settings you use, accessible by pressing the MENU button, the pen can read the definition aloud.

Recorder

Start recording a voice memo with the microphone 5-10 cm from your mouth. Speak with your normal voice. Use the OK button to toggle between Record/Pause. And when finished, use Back button to exit. The recording is automatically saved in the Library/My Recordings and can be retrieved and listened to at any time.

USB connectivity

When C-Pen Reader 2 is connected to a computer you get a couple of additional functions. Select one out of three options:

- **U-Disk**

In this mode C-Pen Reader 2 becomes a portable disk. You can access or download text files saved in the Library, import usage statistics to Connect Desktop app or use C-Pen Reader 2 as a portable drive.

- **Keyboard**

In this mode C-Pen Reader 2 doubles as a keyboard. Anything you scan with C-Pen Reader 2 is directly and automatically input to any text field where the text cursor is positioned. It is thus possible to scan text directly to text editors, like MS Word, Google Doc and others, and spreadsheets. In this mode it is important that the computer system keyboard (e.g., MAC OSX and Windows) is set to the same language as the C-Pen Reader 2.

- **Charge**

When Charge is selected, the C-Pen Reader 2 charges its battery. This mode has no options or settings.

For more information, please check out www.cpen.com/products/reader2.

You can also visit our YouTube Channel [youtube.cpen](https://www.youtube.com/c/cpen).

com for more details and descriptions.

Technical specification

Refer to www.cpen.com for information about supported languages, upgradability, battery, etc.

Safety Precautions for Battery Usage

THE LITHIUM BATTERY IS HAZARDOUS. ANY ATTEMPT TO DISASSEMBLE THE BATTERY IS NOT ALLOWED. IF YOU DISASSEMBLE OR REPLACE THE BATTERY, IT MAY EXPLODE. THROWING IT INTO A FIRE MAY ALSO CAUSE AN EXPLOSION. KEEP THE BATTERY AND THE DEVICE DRY, AND AWAY FROM WATER OR OTHER LIQUID TO AVOID SHORT-CIRCUIT. MAKE SURE NOT TO USE THE BATTERY WHEN IT IS DAMAGED, DEFORMED, DISCOLORED OR OVERHEATED OR EMITS AN ODOR. THIS PRODUCT SHOULD BE USED WITH CARE IN TROPICAL REGIONS. IF YOU HAVE QUESTIONS ON HOW TO USE THE PEN, PLEASE CONTACT OUR TECHNICAL SUPPORT/SERVICE FOR HELP.

BATTERY maintenance and precautions

Battery capacity deteriorates over time. To optimize battery life time:

- Charge battery prior to becoming completely empty.
- Do not expose the battery to heat longer than necessary (above 30°C is considered hot).
- Disconnect charger as soon as possible after battery becoming fully charged.
- Especially do not leave battery flat as it may harm the battery.
- EVEN IF THE DEVICE IS NOT USED FOR A LONGER PERIOD IT'S RECOMMENDED TO CHARGE THE BATTERY AT LEAST EVERY THREE MONTHS

Declaration of Conformity

Verratti AB hereby declares that the product C-Pen Reader 2 complies with requirements Electromagnetic Compatibility Directive 2014/30/EU and 93/68/EEC – CE Marking directive and with SI 2016/1091 requirements – **UKCA**.

Warning – any changes or modifications not expressly approved by the party responsible for compliance could void the user's authority to operate the equipment.

This device complies with part 15 of the FCC Rules. Operation is subject to the following two conditions: (1) This device may not cause harmful interference, and (2) this device must accept any interference received, including interference that may cause undesired operation.

Note: This equipment has been tested and found to comply with the limits for a Class B digital device, pursuant to part 15 of the FCC Rules. These limits are designed to provide reasonable protection against harmful interference in a residential installation. This equipment generates, uses, and can radiate radio frequency energy and, if not installed and used in accordance with the instructions, may cause harmful interference to radio communications. However, there is no guarantee that interference will not occur in a particular installation. If this equipment does cause harmful interference to radio or television reception, which can be determined by turning the equipment off and on, the user is encouraged to try to correct the interference by one or more of the following measures:

- Reorient or relocate the receiving antenna.
- Increase the separation between the equipment and receiver.
- Connect the equipment into an outlet on a circuit different from that to which the receiver is connected.
- Consult the dealer or an experienced radio/TV technician for help.

FCC Radiation Exposure Statement: This equipment complies with FCC radiation exposure limits set forth for an uncontrolled environment. This transmitter must not be co-located or operating in conjunction with any other antenna or transmitter. This equipment should be installed and operated with minimum distance 20cm between the radiator & your body.

RoHS Declaration

Based on information provided by our suppliers this product meets the requirements of RoHS Directive 2015/863/EU. The maximum concentration value of the prohibited six substances of "RoHS Directive" do not exceed the following:

- Cadmium and its compounds: 0.01% (100 ppm) by weight in homogeneous materials.
- Lead and its compounds, Mercury and its compounds, Hexavalent chromium and its compounds, Poly Brominated biphenyls (PBB), Poly Brominated diphenyl ethers (PBDE): 0.1% (1000 ppm) by weight in homogeneous materials.

WEEE Notice

The Directive on Waste Electrical and Electronic Equipment (WEEE) which entered into force as European law on 13th February 2003 resulted in a major change in the treatment of electrical equipment at end-of-life. The purpose of this Directive is a first priority the prevention of WEEE and in addition to promote the reuse recycling and other

forms of recovery of such wastes so as to reduce disposal. The WEEE logo on the product or on its box indicates that this product must not be disposed of or dumped with your other household waste. You are liable to dispose of all your electronic or electrical waste equipment by relocating over to the specified collection point for recycling of such hazardous waste. Isolated collection and proper recovery of your electronic and electrical waste equipment at the time of disposal will allow us to help conserving nature resources. Moreover, proper recycling of the electronic and electrical waste equipment will ensure the safety of human health and environment. For more information about electronic and electrical waste equipment disposal recovery and collection points please contact your local city center household waste disposal service shop from where you purchased the equipment or manufacturer of the equipment.




Copyright© Verratti AB

C-PEN is the trademark or registered trademark of Verratti AB

Official website: cpen.com

Documents / Resources

 A white, vertical, pen-shaped device with a small screen and buttons, labeled 'READER 2' and 'C-PEN'.	<p>C-Pen C610R-X2000 Reader Pen [pdf] User Manual C610R-X2000 Reader Pen, C610R-X2000, Reader Pen, Pen</p>
------------------------------------------------------------------------------------------------------------------------------------------------------------------------------------------	--------------------------------------------------------------------------------------------------------------------------------

References

- [☞ The original pen scanner brand for home, work and study - C-Pen](#)
- [☞ Register your product on our website and get updates - C-Pen](#)
- [☞ C-Pen Reader 2 - Supports reading and learning - C-Pen](#)
- [☞ YouTube](#)
- [☞ The original pen scanner brand for home, work and study - C-Pen](#)
- [☞ C-Pen Reader 2 - Supports reading and learning - C-Pen](#)
- [🌐 YouTube](#)