



# Byybuo SmartFrame D10 WiFi Digital Photo Frame Owner's Manual

[Home](#) » [Byybuo](#) » Byybuo SmartFrame D10 WiFi Digital Photo Frame Owner's Manual 

## Contents

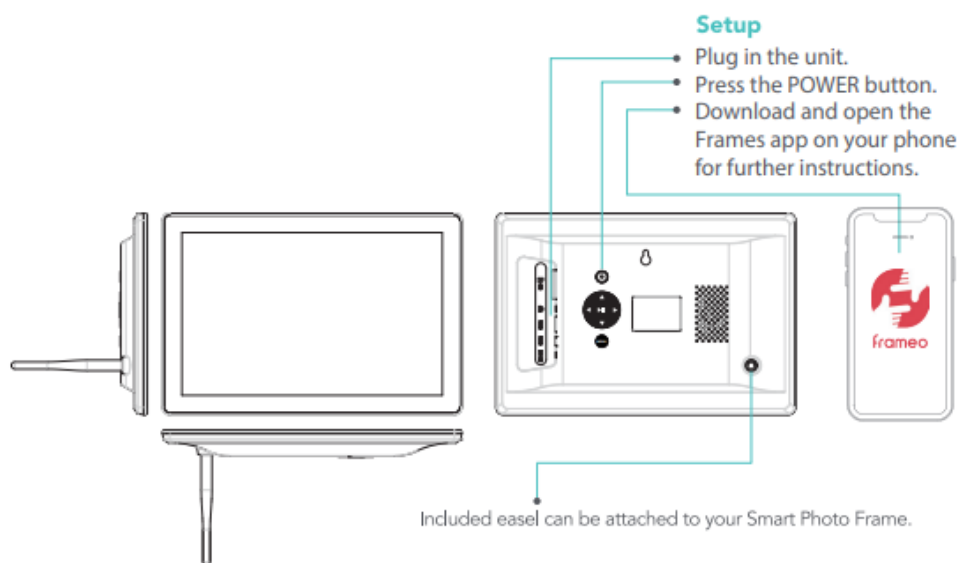
- [1 Byybuo SmartFrame D10 WiFi Digital Photo Frame](#)
- [2 Smart Photo Frame](#)
- [3 FCC Compliance Notification](#)
- [4 WARRANTY CARD](#)
- [5 Documents / Resources](#)
- [6 Related Posts](#)



**Byybuo SmartFrame D10 WiFi Digital Photo Frame**



## Smart Photo Frame



- Package Contents
- Smart photo frame
- Power adapter
- Easel
- Quick guide

## FCC Compliance Notification

### Warning:

**This device complies with Part 15 of the FCC Rules. Operation is subject to the following two conditions:**

1. This device may not cause harmful interference.
  2. This device must accept any interference received, including interference that may cause undesired operation.
- Changes or modifications not expressly approved by the party responsible for compliance could void the user's authority to operate the equipment.
- This equipment has been tested and found to comply with the limits for a Class B digital device, pursuant to Part 15 of the FCC Rules. These limits are designed to provide reasonable protection against harmful interference in a residential installation. This equipment generates, uses, and can radiate radio frequency energy and, if not installed and used in accordance with the instructions, may cause harmful interference to radio communications.
  - However, there is no guarantee that interference will not occur in a particular installation. If this equipment does cause harmful interference to radio or television reception, which can be determined by turning the equipment and on, the user is encouraged to try to correct the interference by one or more of the following measures:
    - Reorient or relocate the receiving antenna.
    - Increase the separation between the equipment and the receiver.
    - Connect the equipment to an outlet on a circuit different from that to which the receiver is connected.
    - Consult the dealer or an experienced radio/TV technician for help.
  - This equipment must be installed and operated in accordance with provided instructions and the antenna(s) used for this transmitter, and must not be co-located or operating in conjunction with any other antenna(s) or transmitter. End-users and installers must be provided with antenna(s) installation instructions and transmitter operating conditions for satisfying RF exposure compliance.

## WARRANTY CARD

Model Name D10

Product Serial No. \_\_\_\_\_

Date of purchase

--	--

dd

--	--

mm

--	--

VV

### Customer's Details

Name \_\_\_\_\_

Address in full \_\_\_\_\_

Telephone No. \_\_\_\_\_


Dealer Name & Address \_\_\_\_\_

Customer's signature & Date

Dealer's signature with rubber stamp

- Designed by BYYBUO, Assembled in PRC

## Documents / Resources

	<a href="#">Byybuo SmartFrame D10 WiFi Digital Photo Frame</a> [pdf] Owner's Manual D10, 2AXUI-D10, 2AXUID10, SmartFrame D10 WiFi Digital Photo Frame, SmartFrame D10, Wi Fi Digital Photo Frame, Digital Photo Frame, Smart Frame, D10 Photo Frame
---	--

Manuals+.