

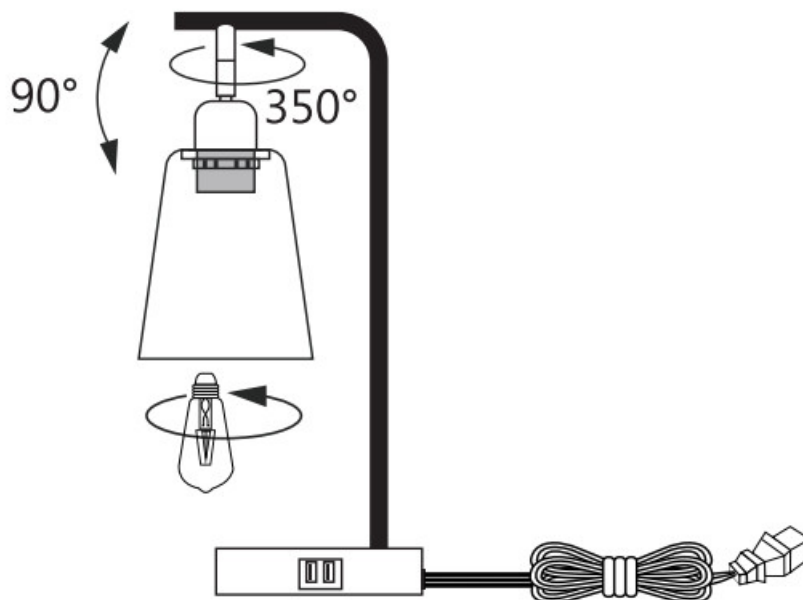


## BYBLIGHT 3-Way Dimmable Touch Control Lamp With 350 Rotatable Head User Manual

[Home](#) » [BYBLIGHT](#) » BYBLIGHT 3-Way Dimmable Touch Control Lamp With 350 Rotatable Head User Manual 

# BYBLIGHT

### 3-Way Dimmable Touch Control Lamp With 350 Rotatable Head User Manual



#### Features:

1. 350° Rotatable Lamp Head
2. 3-Way Dimmable
3. Touch Control
4. Easy Charging

## 5. Eye Protection

### Package Included:

1. Glass Shade
2. Plastic Ring
3. ST64 LED Dimmable Lamp
4. UL Plug

#### Contents

[1 Important Safety](#)

[Instructions](#)

[2 WARNING](#)

[3 Installation](#)

[4 How to use it?](#)

[5 Maintenance:](#)

[6 FCC COMPLIANCE](#)

[7 1 YEAR WARRANTY](#)

[8 Documents / Resources](#)

[9 Related Posts](#)

### Important Safety Instructions

- This portable luminaire has a polarized plug (one blade is wider than the other) as a safety feature to reduce the risk of electric shock. This plug will fit in a polarized outlet only one way. If the plug does not fit fully in the outlet, reverse the plug. If it still does not fit, contact a qualified electrician. Never use an extension cord unless plug can be fully inserted. Do not alter the plug.
- Do not attempt to defeat this safety feature.
- These instructions are provided for your safety. It is very important that they are read carefully and completely before beginning the assembly and installation of this lighting fixture.
- This fixture has been rated for up to one (1) 60-watt maximum incandescent light bulb (not included) or one 6-watt SBLED bulb (Included). To avoid the risk of fire, do not exceed the recommended wattage.
- This lamp is meant for indoor use.
- Save these instructions.

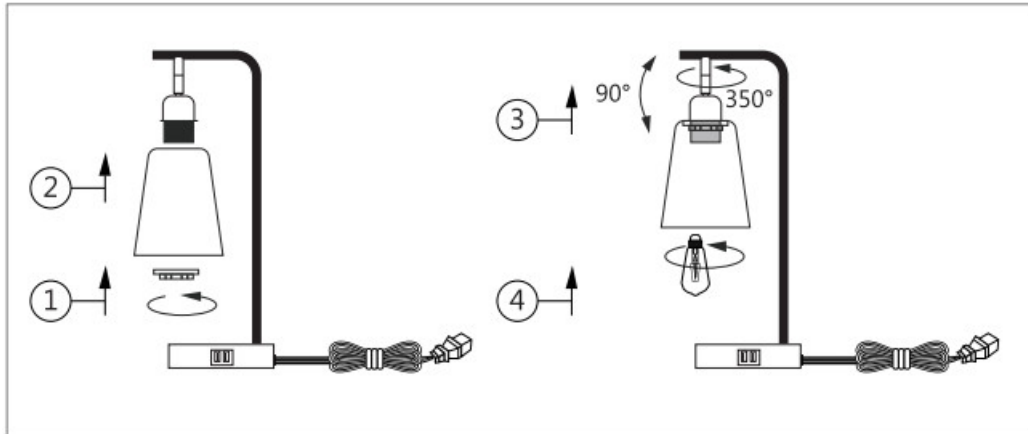
### WARNING

- To reduce the risk of fire, electrical shock or personal injury, always turn off and unplug the light fixture and allow it to cool prior to replacing the light bulb.
- Do not touch the bulb when the fixture is turned on. Do not look directly at lit bulb.
- Keep flammable materials away from lit bulbs.

### Installation

1. Unscrew the fixing ring from the lamp holder.
2. Fix the glass shade on the holder.

3. Screw the fixing ring back.
4. Install the bulb



### How to use it?

1. The shade can be gently adjusted 90 degrees vertically and rotated 350 degrees horizontally ;
2. Touch Dim Switch, touch the main metal parts of the lamp body turn on the lamp 20%-50%-100% until Off ;
3. If needed, gently and appropriately the USB devices on the side of the lamp base until secure.

### Note:

1. USB and type-c power output interface for cellphone/ tablet computer charging. The output maximum is 5V/ 2A. If charging for two devices simultaneously, the output will be 5V/ 1A.
2. There is one USB and one Type-c port on the base, which enables devices to recharge. Do not overcharge.

### Maintenance:

- Wipe clean with a soft, dry cloth or static duster.
- Always avoid the use of harsh chemicals or abrasive cleaners as they may cause damage to the fixture's finish.

### FCC COMPLIANCE

**NOTE:** This equipment has been tested and found to comply with the limits for a Class B digital device, pursuant to Part 15 of the FCC Rules. These limits are designed to provide reasonable protection against harmful interference in a residential installation. This equipment generates uses and can radiate radio frequency energy and, if not installed and used in accordance with the instructions, may cause harmful interference to radio communications. However, there is no guarantee that interference will not occur in a particular installation. If this equipment does cause harmful interference to radio or television reception, which can be determined by turning the equipment off and on, the user is encouraged to try to correct the interference by one or more of the following measures:

- Reorient or relocate the receiving antenna.
- Increase the separation between the equipment and receiver.
- Connect the equipment into an outlet on a circuit different from that to which the receiver is connected.

- Consult the dealer or an experienced radio/TV technician for help.

This device complies with Part 15 of the FCC Rules. Operation is subject to the following two conditions: (1) This device may not cause harmful interference, and (2) This device must accept any interference received, including interference that may cause undesired operation.

Caution: Changes or modifications not expressly approved by the party responsible for compliance could void the user's authority to operate the equipment.

#### IC COMPLIANCE:

This Class B digital apparatus complies with CAN ICES-3 (B)/NMB-3(B)

## 1 YEAR WARRANTY

Byblight warrants this product to be free of defects in parts, materials, and workmanship for a period of one year, from date of purchase, should any repairs Or servicing under this warranty be required, contact Customer Service by email for instructions on how to pack and ship the product to Byblight.

This warranty gives you specific legal rights and you may also have other rights which vary from state to state.



Email: [support@byblight.com](mailto:support@byblight.com)

## Documents / Resources

	<a href="#">BYBLIGHT 3-Way Dimmable Touch Control Lamp With 350 Rotatable Head</a> [pdf] User Manual 3-Way Dimmable Touch Control Lamp With 350 Rotatable Head
--	---

[Manuals+](#)