



BWT FSA1500 Pool Robot Instruction Manual

[Home](#) » [BWT](#) » BWT FSA1500 Pool Robot Instruction Manual 

Contents

- [1 BWT FSA1500 Pool Robot](#)
- [2 Product Components](#)
- [3 Product Operation](#)
- [4 Product Using the App](#)
- [5 Components](#)
- [6 Introduction](#)
- [7 Operation](#)
- [8 Using the App](#)
- [9 Troubleshooting](#)
 - [9.1 THE CLEANER DOES NOT TURN ON](#)
- [10 Warranty](#)
- [11 Documents / Resources](#)
- [12 Related Posts](#)



BWT FSA1500 Pool Robot



The FSA1500 and FSA1800 Robotic Pool Cleaners are automatic pool cleaning machines that move across the pool floor, picking up dirt and debris. These cleaners are equipped with a power cable, power supply, and robotic pool cleaner.

Product Components

- Power cable
- Power supply
- Robotic pool cleaner

Product Operation

Before using the cleaner, make sure there are no people in the pool, the filters are clean, and the pool conditions are met. To operate the cleaner:

1. Place the power supply at least 3.6 meters/11.8 feet from the pool and at least 12 cm/4.7 inches above ground.
2. Use as much cable as needed in the water.
3. Turn on the cleaner when it reaches the floor.

The cleaning cycle includes the cleaner moving across the pool floor, picking up dirt and debris, changing direction and rotating automatically according to the selected program, and climbing the pool walls every few minutes as set in its internal program. Occasionally, the robotic cleaner might stop moving for a few seconds which is part of normal operation. To stop the cleaner operation during a cleaning cycle, press the operation button once.

Pulling Cleaner Unit Out of the Water

To pull out the cleaner unit from the water:

1. Unplug the floating cable from the power supply.
2. Pull the floating cable until the unit is close enough to reach the handle.
3. Using the handle, lift the cleaner out of the pool.

Do not use the floating cable to lift the cleaner out of the water.

Product Using the App

To start the robotic cleaner using the app:

1. Download and install the application from Google Play using the QR code on the back of the manual.
2. Open the COSMY App.
3. Open the Bluetooth option on your phone.
4. The app will present the discovered robots in its range (RoboCleaner xxxxxx).
5. Tap on the robot's name. The app will connect to your power supply. The Bluetooth icon on the power supply unit will light up to indicate the correct match.
6. To activate the cleaner, tap the On/off icon on the app.

Components



Introduction

System overview

The robotic cleaner sweeps the pool floor and walls collecting dirt and debris in its filters. This user manual

explains how to operate the robotic cleaner, including cleaning, maintenance and storage procedures. Note: This manual reviews several different models with variations in components.

Robotic cleaner operation

Once the robotic cleaner is placed in the pool and activated, it operates according to its program. It moves along the floor and walls of the pool, covering the entire area of the pool floor and walls. When it has finished its program, it remains inactive on the pool floor. Power will automatically shut off. Note: It's not recommended to stop the pool cleaner prior to cycle end.

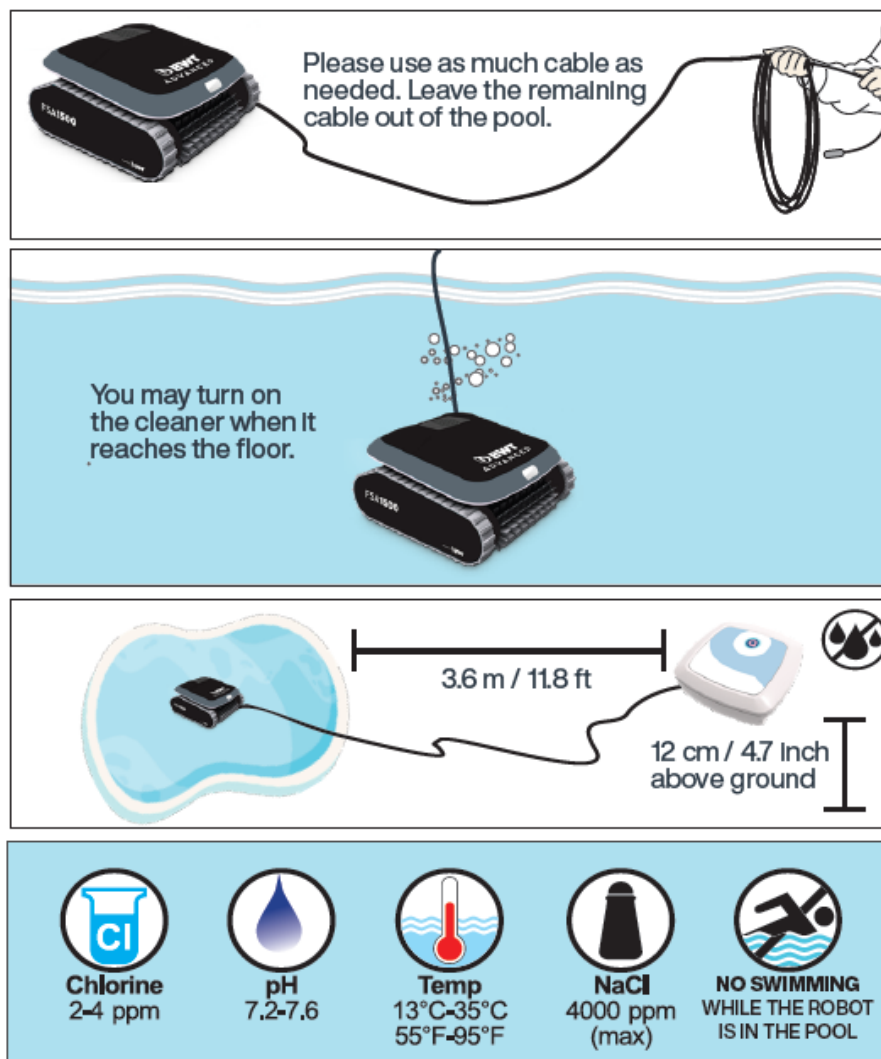
Note: Wall climbing is an optional feature. When the wall climbing feature is enabled, the robotic cleaner climbs the wall at intervals according to its internal program. Its ability to climb over stairs in the swimming pool is subject to stair geometry and material.

Operating conditions

The robotic cleaner is intended for use in residential swimming pools only and in the following conditions: (1) Recommended water temperature 22°C-32°C (72°F-90°F). (2) Water pH : 7.2 – 7.6 (3) Chlorine level: pool is maintained according to the pool manufacturer's instructions. (Recommended Chlorine level: 2-4 ppm)

Note: Failure to maintain the pool according to the recommended operating conditions could prevent the robotic cleaner from functioning properly.

Operation



Placement of the Power Supply

Place the power supply at least 3.6 meters / 11.8 feet from the pool and at least 12 cm above the ground.

CAUTION: The power supply is not water resistant; it must not be exposed to water or to direct sunlight. Press the plastic snap on the zip ties in order to release the floating cable. Use as much cable as needed in the water.

Before placing the cleaner unit in the water

Make sure there are no people in the pool. Make sure that the filters are clean. Make sure the pool conditions are met; (see "Operating Conditions").

Placing cleaner in the water

Unroll the floating cable. It is recommended to extend a length of cable that is equal to the diagonal size of the pool plus an additional two meters. Smooth out coils or twists in the cable. Connect the floating cable to the socket located on the power supply. Roll extra cable, not in the pool, near the power supply. Place the robotic cleaner in the pool. Let it sink to the bottom of the pool. Do not start the operation before the robotic cleaner is settled on the pool floor.

CAUTION: Operating the cleaner out of water may cause immediate and severe damage resulting in loss of warranty.

Starting the robotic cleaner

Connect the power supply to the wall socket. The on/off button will light up and the robotic cleaner will start its cleaning program. If the power supply is already connected to the wall socket, the on/off button will flash to indicate that the robotic cleaner is in standby mode. Press the On/Off button in order to change the above mode (On to Off – standby, or vice versa).

Note: if the full filter indication light is ON make sure to remove and clean the filter prior to putting the cleaner inside the pool water.

Cleaning cycle

During the cleaning cycle, the cleaner: moves across the pool floor picking up dirt and debris. Changes direction and rotates automatically according to the selected program. Climbs the pool walls every few minutes, as set in its internal program.

Note: The robotic cleaner might occasionally stop moving for a few seconds. This is part of normal operation, not a malfunction.

Stopping robotic cleaner operation

The robotic cleaner moves automatically to 'standby' after every cleaning cycle and the on/off button starts flashing. To stop the cleaner operation during a cleaning cycle, press the operation button once. On/off button starts flashing and the cleaner is in standby mode.

Pulling cleaner unit out of the water

1. Unplug the floating cable from the power supply.

2. Pull the floating cable until the unit is close enough to reach the handle.
3. Using the handle, lift the cleaner out of the pool.

CAUTION: Do not use the floating cable to lift the cleaner out of the water.



The power supply is connected to the robotic cleaner via the floating cable (1). The unit is powered by AC power (2) and supplies low voltage and commands to the robotic cleaner through the outlet socket.

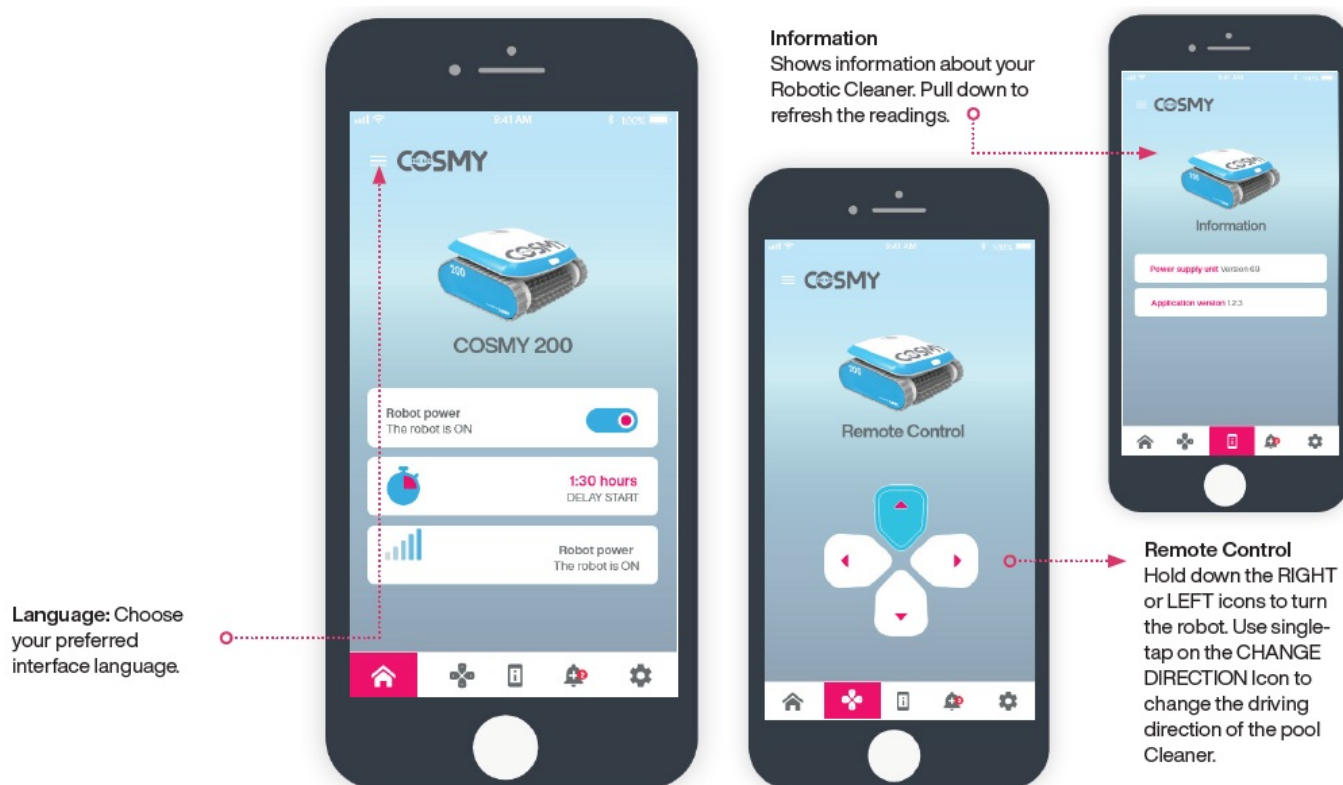
The power supplies feature a control panel with indicators:



- On/Off (all models)
- Full filter indicator (model FSA1800 only)
- Bluetooth indicator (model FSA1800 only)

Using the App

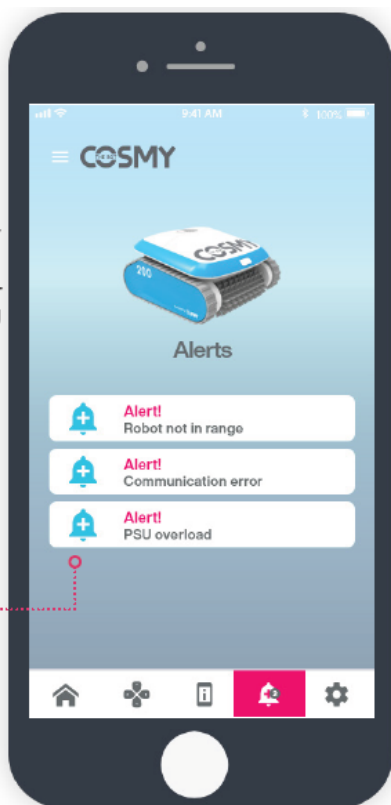
Starting the Robotic Cleaner using the App:



1. Download and install the Application from Google Play (Use the below QR code on the back of the manual)
2. Open the COSMY App.
3. Open Bluetooth option on your phone.
4. The APP will present the discovered robots in its range (RoboCleaner xxxxxx).
5. Tap on robot's name. The APP will connect to your power supply. The Bluetooth icon on the power supply unit will light up to indicate correct match.
6. To activate the cleaner, tap the On/off icon on the App.

Alerts

Shows different alerts received from the Robotic pool Cleaner or the Power Supply. For required action for each alert – see Trouble Shooting section.



Settings

Change the settings of the Pool Cleaner:

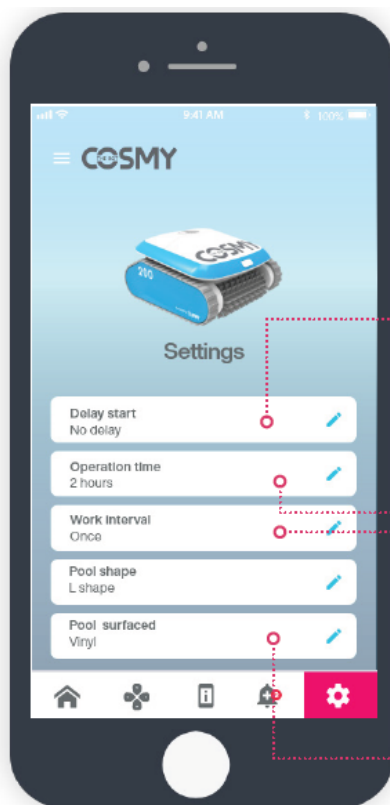
Delay Start (in hours): The Pool Cleaner will start the cleaning cycle after the chosen period of time.

Operation Time: The Pool Cleaner will clean the pool according to the chosen cycle time:

- 1.5 hours, floor only cleaning
- 2 hours, floor and wall cleaning
- 2.5 hours, floor and wall cleaning

Work Interval: The Pool Cleaner will start working automatically every 48/72/96 hours. (Choosing this option will cancel the Delay time)

Pool Properties: Choose Shape and Surface according the pool parameters.



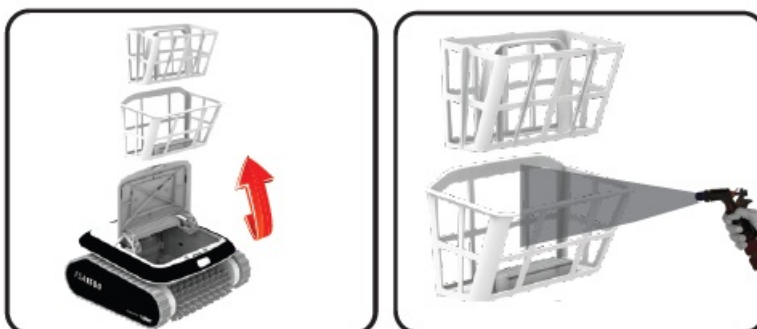
OPERATION

Cleaning the filters



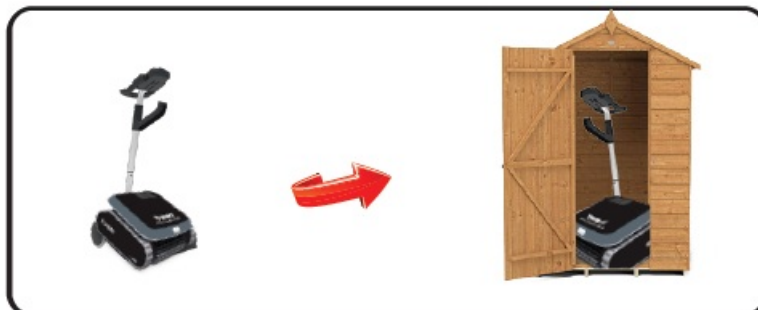
The two filters must be cleaned after each cleaning cycle. Press the button to release the filter and pull it out of the cleaner. Open the filter case. Spray water on the outer sides of the filter and then spray water towards the inner side of the filter to clean all the dirt and debris. Reinsert the filter back into its location.

Storing the robotic cleaner



Follow these instructions to store the robotic cleaner when not in use: Disconnect the power cord from the wall outlet. Disconnect the floating cable from the power supply. Make sure that the power supply is not exposed to water. Spread out the floating cable, and roll it. Wash the cleaner unit interior space with fresh water and let it dry. Roll the floating cable and place it on the cleaner unit. Caution: Do not roll the floating cable on the handle of the cleaner unit. Store the robotic cleaner components in a dry, closed location.

Checking water outlet propeller



It is recommended to periodically clean debris and hair from the propeller of the water outlet: Remove the filters. Remove the screws that hold the water outlet cover. Remove the water outlet cover. Clean any hairs, dirt, or debris. Return the cover and fasten it with the screw. Reinsert the filters.

Troubleshooting

THE CLEANER DOES NOT TURN ON

There is no electricity in the wall socket

1. Disconnect cleaner from the power supply unit.
2. Disconnect power supply from the wall socket, wait 30 seconds and reconnect.
3. Turn power on. If not activated, connect the unit to a different wall socket.

The obstacle in the drive system of the cleaner unit:

1. Turn the cleaner unit carefully to view the underside.
2. Check that the scrubbing brush is not bent/broken.
3. Clean and remove obstacles and debris if necessary.

Propeller is seized due to accumulation of hair: Check if the propeller is broken or needs to be cleaned (see “Checking Water Outlet Propeller”).

THE CLEANER MOVES BUT DOES NOT PUMP WATER

Filters are dirty

1. Remove the filters and clean them. Propeller is broken or seized due to accumulation of hair: Check if the propeller is broken or needs cleaning (see “Checking Water Outlet Propeller”).

CLEANER PUMPS WATER BUT DOES NOT MOVE

The obstacle in the drive system of the cleaner unit:

1. Turn the cleaner unit carefully to view the underside.
2. Check that the scrubbing brush is not bent/broken.
3. Clean and remove obstacles and debris if necessary.

THE CLEANER STARTS AND SHUTS OFF AFTER A SHORT TIME

Filters are dirty

1. Remove and clean the filters.
2. Restart the robot and try again.

Propeller is broken or seized due to accumulation of hair:

1. Remove the top screws on the top outlet.
2. Check if the propeller is broken or needs to be cleaned.

The obstacle in the drive system of the cleaner unit:

1. Turn the cleaner unit carefully to view the underside.
2. Check that the scrubbing brush is not bent/ broken.
3. Clean and remove obstacles and debris if necessary.

THE CLEANER DOES NOT PICK UP DIRT

- Filters are dirty or have holes.
- Clean as needed and verify that there are no holes in the filters. If there are holes in the filter it needs to be replaced.
- The propeller is broken or seized due to accumulation of hair.
- Check if the propeller is broken or needs cleaning (see “Checking Water Outlet Propeller”).

THE CLEANER UNIT DOES NOT COVER THE ENTIRE POOL

Clean the filters

1. Verify that there is enough length of the floating cable in the water to reach the far end of the pool.
2. Make sure that the floating cable is properly spread out and is not tangled.

The propeller is broken or seized due to the accumulation of hair

1. Remove the top screws on the top outlet.
2. Check if the propeller is broken or needs cleaning.

THE CLEANER DOES NOT CLIMB WALLS

1. Verify that your robotic cleaner is not a floor-only model.
2. Verify that Program 1, floor cleaning only, is selected on the App.
3. Make sure to clean the filters
4. Make sure the propeller isn't broken or seized with debris/hair.

Warning

- Do not stay in the pool and remove any and all items from the pool before operating the robotic pool cleaner. Do not leave the robot inside the pool if unused.
- The power supply must be connected through a Ground Fault Current Interrupter (GFCI USA) or a Residual Current Device (RCD Europe) not exceeding 30 mA.
- The connection to the power must meet local and national wiring rules.
- All parts must be replaced with original parts supplied by a BWT-authorized service center.
- Keep out of children's reach.

Warranty

2 YEARS WARRANTY POLICY

In application of the terms of Legislative Royal Decree 1/2007 of 16 November which approved the Revised Text of the Consumer and User Protection Act, BWT offers a two-year product warranty to consumers from the date on which they are delivered by the vendor, subject to the terms and conditions described in this warranty and without prejudice to the terms of the Royal Decree. This warranty will be valid in all Member States of the European Union, subject to the legal limitations in each country where it is enforced, in accordance with the rules for application. The legal warranty covers all components elements and accessories, including power supplies, pumps, motors, electric wires, brushes, belts, handles, wheels, bags, and other product components.

Warranty Conditions

Products may be covered under the legal and sales warranties as long as the problem is reported by the consumer within two months of becoming aware of it. In order for the warranty to apply, the consumer must contact:

1. Contact with the Authorized Technical Assistance Service referred in the attached list and they will inform you about the procedure, or
2. Call the vendor from whom the product was purchased, who will provide you with further information.
Authorized Technical Assistance Service BWT recommends (but does not require) that maintenance and repairs be performed by an Authorized Technical Assistance Service of BWT. If the products are assembled, disassembled.
3. Handled and/or repaired by anyone who is not an Authorized Technical Assistance provider, the legal or sales warranties will NOT apply. The warranty will NOT be harmed in cases of DIY repairs as detailed and recommended in the instruction manual. This warranty covers the repair or the return and replacement of the product as mandated by law.

All repairs covered under the warranty must be performed by a Technical Assistance Service authorized by BWT. The agents, representatives or distributors, DO NOT have the authority to increase or alter the obligations of the warranty in the name and on behalf of BWT.

Exclusions

Under no circumstances will the legal or sales warranty provided by BWT be applicable when the defect or malfunction of the product is due to:

1. Unauthorized modifications of the product;
2. Misuse, abuse or negligence;
3. Damages caused by force majeure or fortuitous events;
4. Use of salt water levels, higher than 5,000 ppm (0.5%)
5. The failure to perform the preventive maintenance indicated in the instruction manual;
6. Use of the product in anything other than private, residential pools.

Furthermore, BWT will not be liable under any circumstances and neither the legal warranty nor the sales warranty will apply, for any damages that may or will occur to any pool, including pool's plaster or pool's vinyl liner, by reason of the use and/or operation of the BWT pool cleaner.

Download COSMY THE BOT App for FSA1800



Documents / Resources



[BWT FSA1500 Pool Robot](#) [pdf] Instruction Manual
FSA1500, FSA1800, FSA1500 Pool Robot, FSA1500, Pool Robot, Robot, Pool