

BUTURE Beta05 Jump Starter



# BUTURE Beta05 Jump Starter User Guide

[Home](#) » [BUTURE](#) » BUTURE Beta05 Jump Starter User Guide 

## Contents

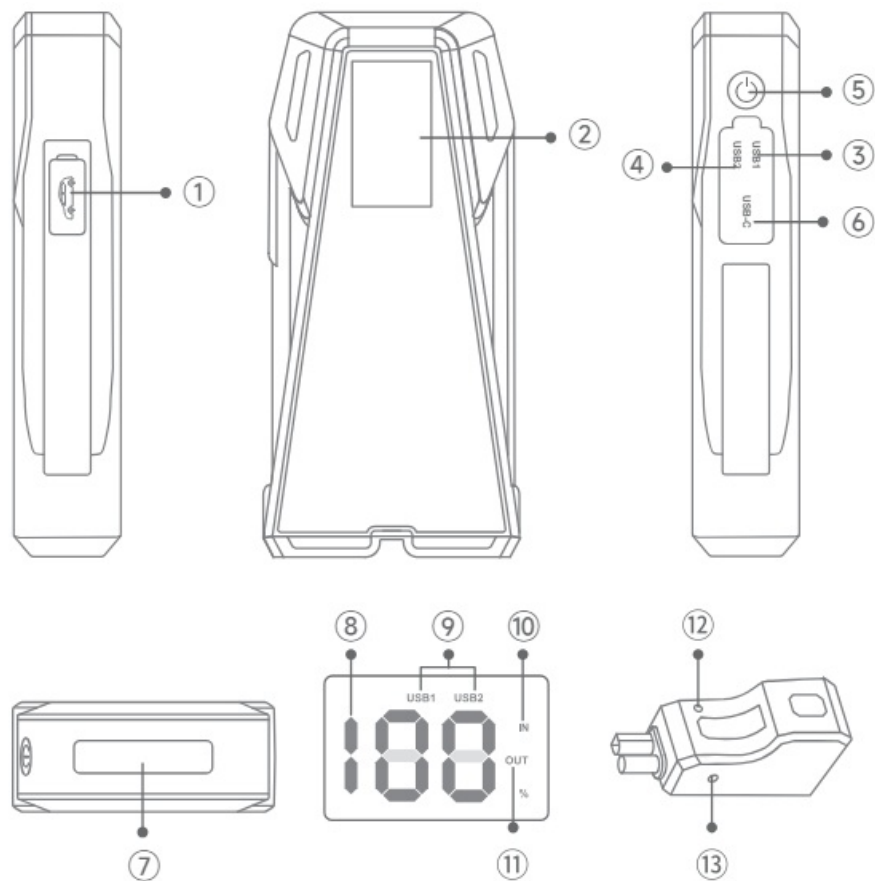
- [1 BUTURE Beta05 Jump Starter](#)
- [2 PRODUCT OVERVIEW](#)
- [3 JUMP START YOUR CAR](#)
- [4 RECHARGE](#)
- [5 CHARGE ELECTRONIC DEVIDES](#)
- [6 LED LIGHTING](#)
- [7 IMPORTANT SAFETY WARNING](#)
- [8 Documents / Resources](#)
  - [8.1 References](#)

# BUTURE

**BUTURE Beta05 Jump Starter**



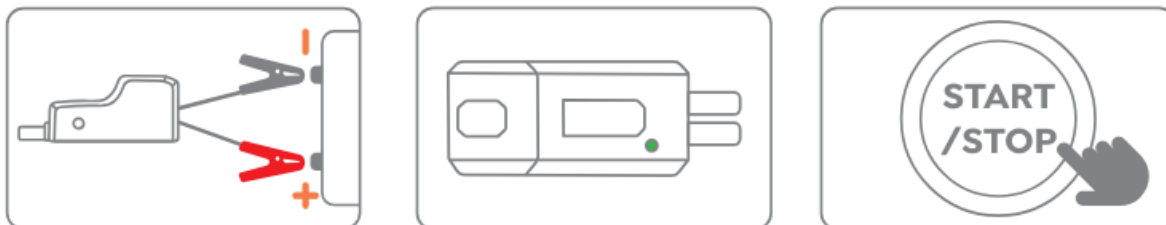
## PRODUCT OVERVIEW



1. Jumpstart Port
2. Display
3. USB Output 1
4. USB Output 2 (18W)
5. Power Button
6. USB C Input
7. LED Light
8. Power Level

- 9. Port Using
- 10. Charging
- 11. Discharging
- 12. Indicator
- 13. Force Start Button

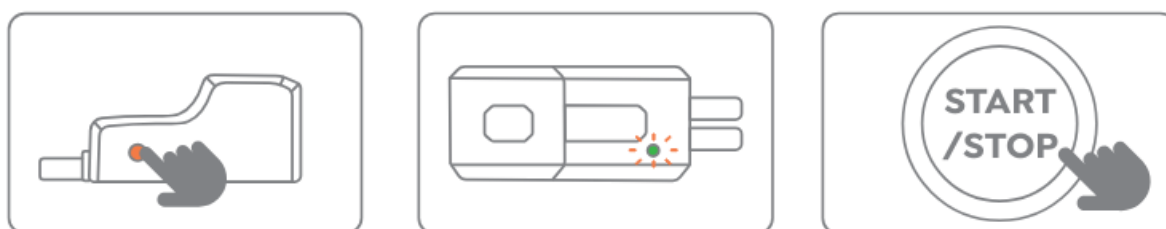
## JUMP START YOUR CAR



1. Insert the jumper cable into the jump starter and connect the clamps to car battery (red to +, black to -).
2. The indicator of jumper cable turns solid green.
3. Start your car engine.

## ABOUT THE FORCE START FUNCTION

If three attempts fail when you correctly connected the clamps to your car, you can use the Force Start Function to enter boost mode.



### 3 steps to fix the problem:

1. Press the force start button for 5 seconds.
2. The indicator of jumper cable is green.
3. Start your car engine.

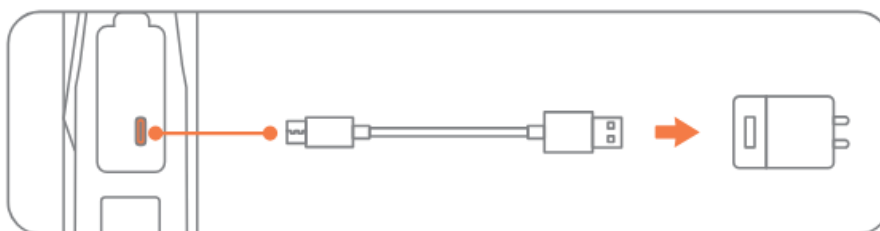
**Warning:** When using the Force Start Function, auto-detect and safety features will be disabled.

## ABOUT THE TROUBLESHOOTING

In any of the following situations, the smart clamp will turn protections on:

Indicator	Situations
Solid red light	<ul style="list-style-type: none"> <li>· Jump starter battery is low and needs to be charged</li> <li>· Startup Timeout Protection</li> </ul> <p>—Press the force start button for about 3S until the indicator turns to steady green. It means that it returns to work</p>
Solid red light with slow and brief beeps	<ul style="list-style-type: none"> <li>· Reverse Charge Protection</li> </ul> <p>—Reconnect to try again</p>
Solid red light with quick and brief beeps	<ul style="list-style-type: none"> <li>· High Temperature Protection</li> </ul> <p>—Remove the clamps to let it cool</p> <ul style="list-style-type: none"> <li>· Relay Short-circuit</li> </ul> <p>—Jumper cable failure. Contact <a href="mailto:support@ibuture.com">support@ibuture.com</a> with details</p>
Solid red light with regular long and short beeps	<ul style="list-style-type: none"> <li>· Short-circuit Protection</li> </ul> <p>— Do not connect smart clips together or to the same metal</p> <ul style="list-style-type: none"> <li>· Reverse-connection Protection</li> </ul> <p>— Reverse smart clip to ensure right connection</p> <ul style="list-style-type: none"> <li>· Over Limit Protection</li> </ul> <p>—Reconnect to try again</p>
The green light flashes 5 times, then the red light is always on	<ul style="list-style-type: none"> <li>· Five Intervals of Start-up Protection</li> </ul> <p>—Press the force start button for about 3S until the indicator turns to steady green. It means that it returns to work</p>
Other	Please contact <a href="mailto:support@ibuture.com">support@ibuture.com</a> with details

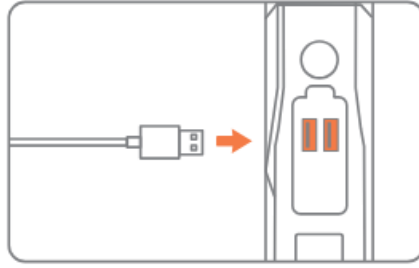
## RECHARGE



1. Insert the charging cable into USB C port.
2. Connect to corresponding adaptor (adaptor not included).

## CHARGE ELECTRONIC DEVICES

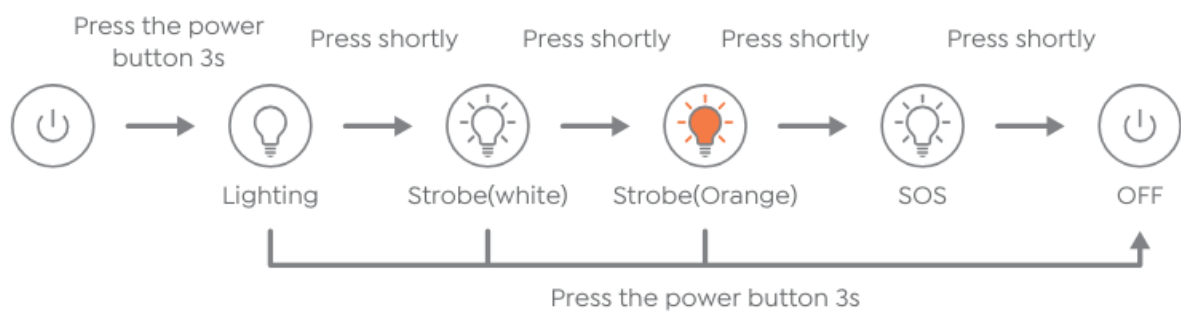
1. Plug the cable into any USB output.



2. Press the power button.



## LED LIGHTING



## PRECAUTIONS

1. The product is for 12V vehicles only.
2. Do not use the product with less than 10% power as this will damage the product.
3. Recharge every 3 months to prolong the lifespan.
4. Wait at least 30 minutes before recharging after starting the car.
5. 60s is recommended between starts, otherwise it will overheat.

## IMPORTANT SAFETY WARNING

1. Store in a cool and well-ventilated place out reach of children and pets.
2. Do not place the product in high temperature environment for a long time. The operation temperature of this product is -20~60°C. The storage temperature should not exceed 50°C/122°F.
3. Only start vehicles with the smart jumper cable supplied by the manufacturer.
4. Do not use the product if the clamp or cable is damaged.
5. Do not connect the red and black clamps together when the product is outputting.
6. Do not connect the red and black clamps to the same piece of metal.

7. Do not disassemble or modify this product.
8. Do not use detergent to clean this product.
9. Do not abuse this product and avoid heavy dropping or repeatedly hitting it.
10. Do not operate the product in explosive environments such as flammable liquids, gases or dusts.
11. Do not immerse the product in water.
12. Do not litter the product and it should be safely recycled.
13. Do not incinerate the product or exposed to high temperatures, as they may explode.
14. Only use replacement parts or accessories provided or recommended by manufacturer.



Scan And Download PDF Version Of User Manual

<https://ibuture.com/pages/user-manuals>

## WHERE TO GET MORE HELP

[Support@ibuture.com](mailto:Support@ibuture.com)

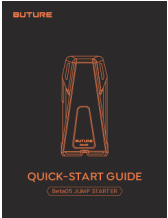
[@buture.official](#)

<https://ibuture.com>

[@buture.official](#)

---

## Documents / Resources

	<p><b><a href="#">BUTURE Beta05 Jump Starter</a></b> [pdf] User Guide Beta05 Jump Starter, Beta05, Jump Starter, Starter</p>
---	--

## References

- [User Manual](#)

This website is an independent publication and is neither affiliated with nor endorsed by any of the trademark owners. The "Bluetooth®" word mark and logos are registered trademarks owned by Bluetooth SIG, Inc. The "Wi-Fi®" word mark and logos are registered trademarks owned by the Wi-Fi Alliance. Any use of these marks on this website does not imply any affiliation with or endorsement.