

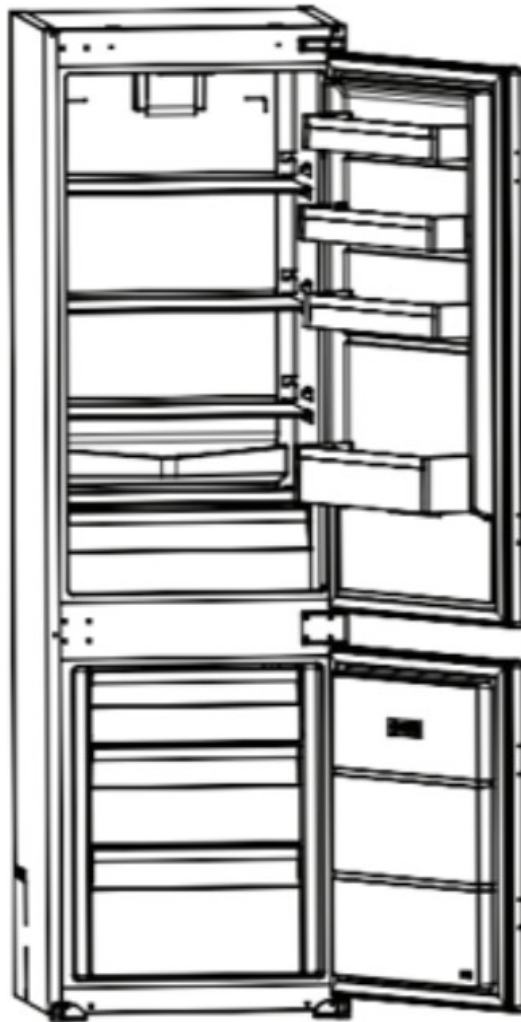


## BUSH BIE7030FF Built-In Combi Fridge Instruction Manual

[Home](#) » [BUSH](#) » BUSH BIE7030FF Built-In Combi Fridge Instruction Manual 

# BUSH

Customer service manual  
Built-In Combi Fridge Freezer  
BIE7030FF



## Contents

- [1 Precautions:](#)
- [2 SAFETY PRECAUTIONS](#)
- [3 Door](#)
- [4 Glass Shelf Change](#)
- [5 Flap Cover Change](#)
- [6 Door Shelf Change](#)
- [7 Adjustable Door Shelf Change](#)
- [8 Basket, Chiller, Crisper Change](#)
- [9 Maxifresh Change](#)
- [10 Thermostat Setting](#)
- [11 ADDITIONAL SUPPORT](#)
- [12 Documents / Resources](#)
- [13 Related Posts](#)

## Precautions:

Always follow safety advice.

Always switch off and unplug the appliance before attempting to remove any part.

Always wear appropriate protective equipment when carrying out any work.

Always use the correct tools for carrying out any work.

Some repairs may not be suitable for unqualified users to carry out. If in doubt seek the advice of a professional repairer.

## SAFETY PRECAUTIONS



Read all instructions before repairing the product.

Before any disassembly make sure appliance is unplugged.

There is electrical shock risk.

Use rated control equipment.

DO NOT attempt a product repair if you have any doubts as to your ability to complete the repair in a safe and satisfactory manner.

Make sure to check out Model name. Rated voltage. Rated current. Operation Temp. etc.

When you replace the parts, please use authentic parts to replace defective parts.

Before starting the dismantling, wear protective equipment.

Do not use multiple receptacles or extension cord.

Do not plug in damaged, torn or old plugs.

Do not allow children to play with the appliance or let them hang off the door.

Do not plug in or out the plug from the receptacle with wet hands to prevent electrocution.

Do not place glass bottles or beverage cans in the freezer department. Bottles or cans may explode.

When taking ice made in the freezer department, do not touch & ice may cause ice burns and/or

Do not cover the body or top of fridge with lace. This affects the performance of your fridge.

Fix the accessories in the fridge during transportation to prevent damage to accessories.

Leave to stand for at least 24 hours before switching on to allow compressor oil to settle if transported horizontally.

Care must be taken while cleaning/carrying the appliance not to touch the bottom of the condenser metal coils at the back of the appliance, as this could cause injury to fingers and hands.

## Door

Changing the Door Swing Direction to Right Hand

1. Unscrew the two screws fixing the top hinge (Pic-1) and remove the refrigerator door. (Pic-2)



Picture-1



Picture-2

2. Unscrew the two screws fixing the middle hinge side bracket and remove it. (Pic-3)



Picture-3

3. Unscrew the two screws fixing the middle hinge (Pic-4) and remove the freezer door. (Pic-5)



Picture-4



Picture-5

4. Remove the bottom hinge pin (Pic-6) and insert it to the left side foot. (Pic-7)



Picture-6



Pic

5. Unscrew the middle hinge side bracket on the left and remove it. (Pic-8) Remove the middle hinge screw caps (big) on the left side.



Picture-8

6. Assemble the refrigerator door. Rotate the middle hinge by 180° and screw it to the left side. (Pic-9) Then screw the middle hinge side bracket on the middle hinge. (Pic-10)



Picture-9

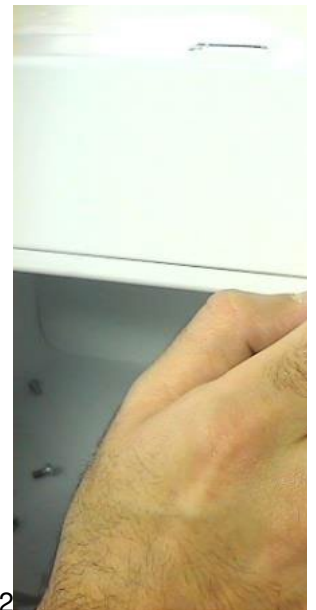


P

7. Remove the top hinge screw caps (big) on the left side (Pic-11) and insert them to the right side. (Pic-12) (You can find the new caps in the user manual bag)



Picture-11



Picture-12

8. Unscrew the pin of the hinge from Hole 1, rotate the top hinge by 180 and screw the pin to Hole 2. (Pic-13)



Picture-13

9. Assemble the freezer door and screw the top hinge to the left side. (Pic-14)



Picture-14

10. Screw the middle hinge side bracket on the right of refrigerator. (Pic-15) and insert the middle hinge screw caps (big) on the right side. (Pic-16) (You can find the new caps in the user manual bag)



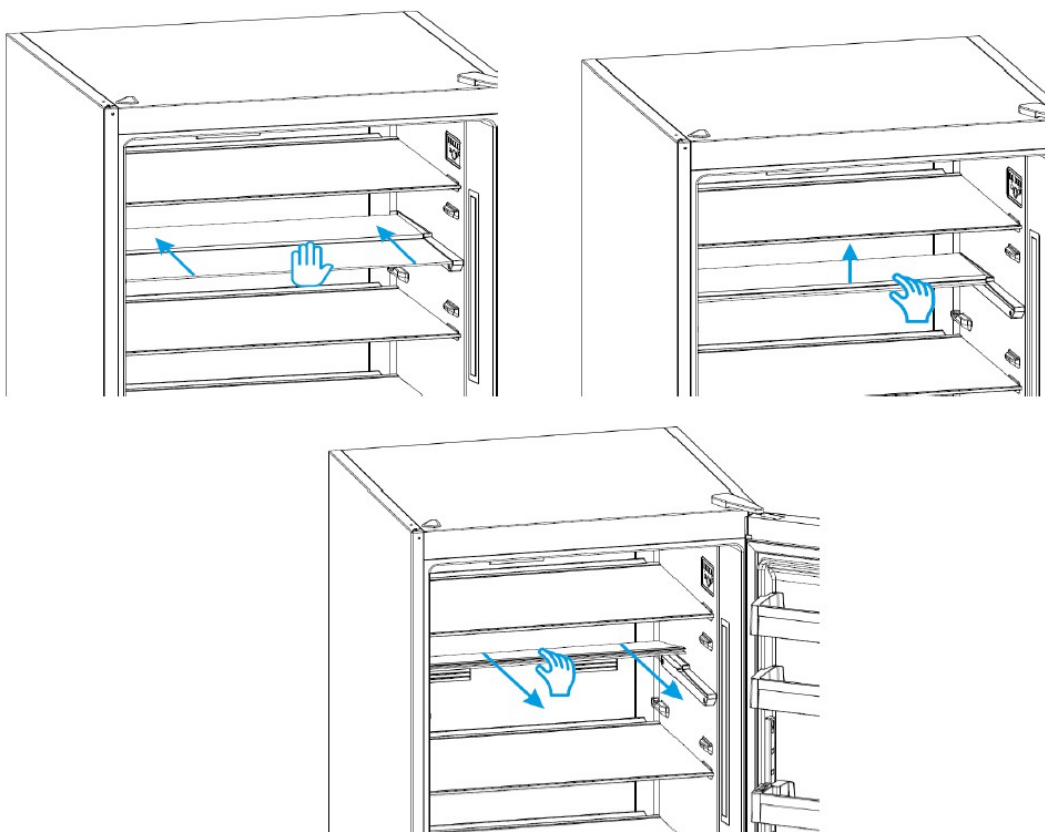
Picture-15



Picture-

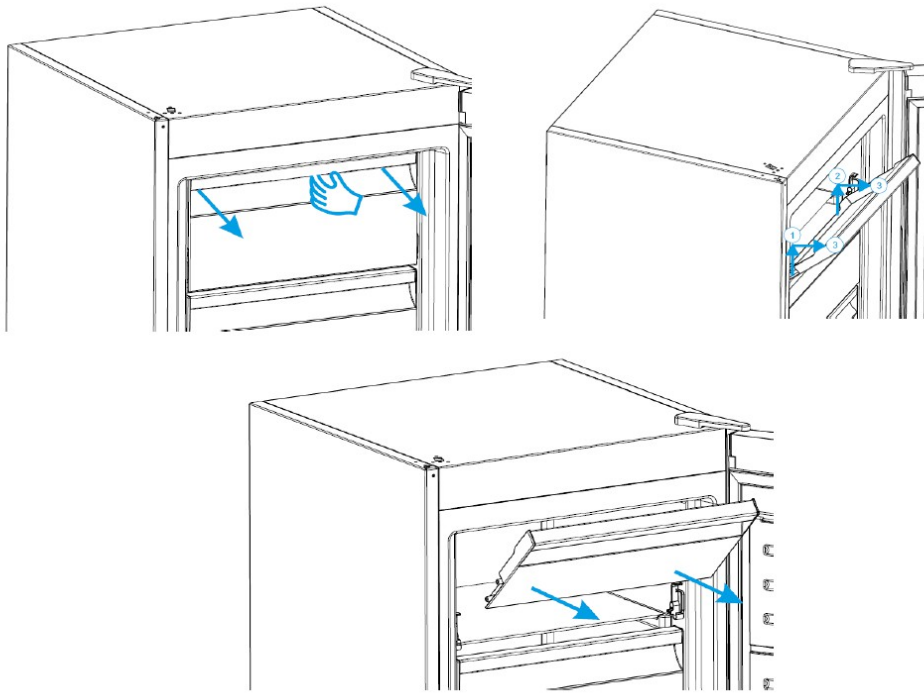
## Glass Shelf Change

First gently lift the front side of glass up. Then you can pull the glass out by directly pulling towards yourself.



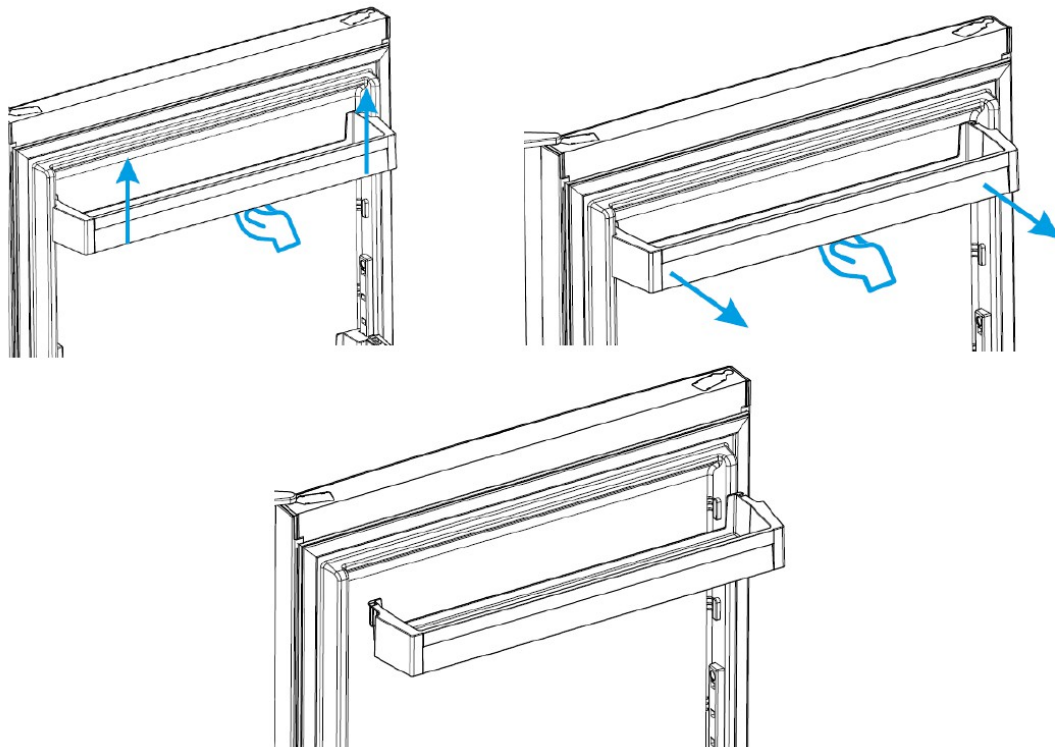
## Flap Cover Change

First open the flap slightly, now push the flap up from its bottom edge, focusing on only one side. When the flap is freed from this side, repeat same operation for the other side.



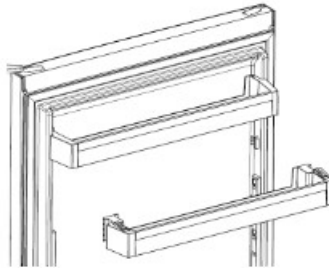
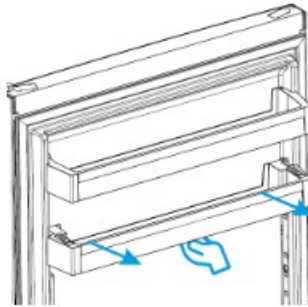
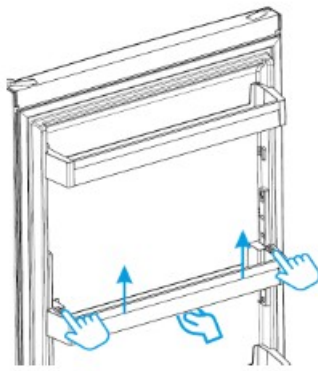
## Door Shelf Change

Gently pull the shelf up using both hands, without bending or twisting the shelf. When shelf is free from assembly details on right and left side, you can take the shelf out by pulling to yourself.



## Adjustable Door Shelf Change

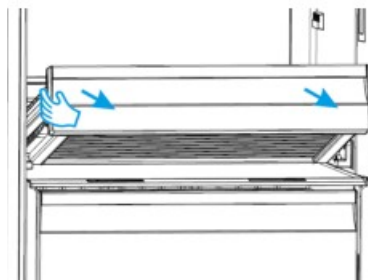
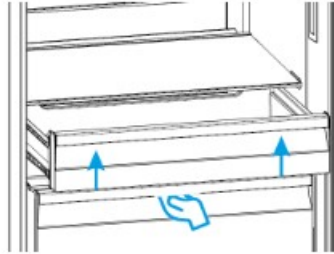
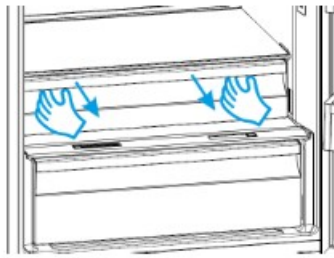
First grip the door shelf by both hands, at the same time using your thumbs, pull latches on sides towards yourself. This will unlock the mechanism, so you can lift the shelf all the way up and free the shelf from its guides on the door.



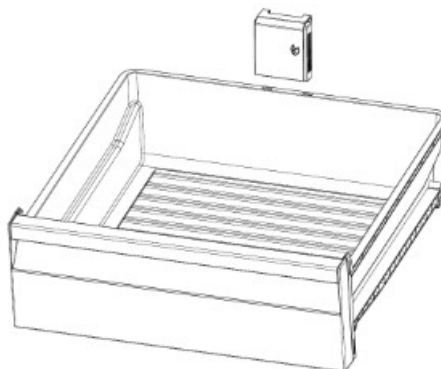
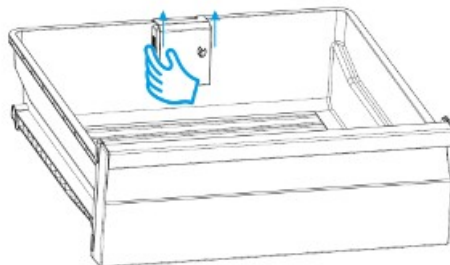
### **Basket, Chiller, Crisper Change**

First pull the basket out until it reaches end position. Then gently pull front side up until frees from its guides on the sides.

Finally continue pulling it out and remove it from place



## Maxifresh Change



## Thermostat Setting

It ensures that the temperature settings in the cooling and freezing compartments of your refrigerator are performed automatically. It may be set to any value ranging from 1 to 5. As you turn the thermostat setting knob

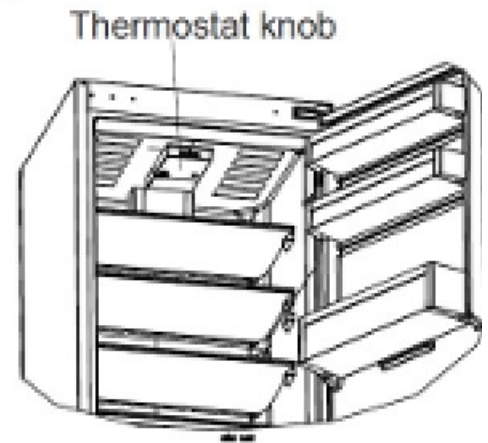
from 1 to 5, the temperature decreases. To save energy in winter months, operate your refrigerator in a lower position.

**Fridge compartment thermostat knob;**

4-5: For further cooling.

2 – 3: For normal use.

1: For less cooling.



**Warnings about Temperature Adjustments**

- It is not recommended that you operate your fridge in environments cooler than 10 °C in terms of its efficiency.
- Temperature adjustments should be made according to the frequency of doors openings and the quantity of food kept inside the fridge-freezer.
- Your fridge-freezer should be operated up to 24 hours according to the ambient temperature without interruption after being plugged in to be completely cooled. Do not open doors of your fridge-freezer frequently and do not place much food inside it in this period.
- During power cut, to prevent any compressor problem you should unplug the fridge-freezer. You should delay plugging in 5 — 10 minutes after your power supply returns. If you plug out the fridge-freezer for a reason you should wait at least 5 min to replug. It is important for avoiding damage to fridge-freezer's components.
- Your fridge-freezer is designed to operate in the ambient temperature intervals according to the climate class stated on the information label. In terms of cooling effectiveness, we do not recommend operating your fridge-freezer outside of the stated temperature values.
- This equipment is designed for use at an ambient temperature within the 16°C – 38°C range.

Climate class	Ambient temperature °C
T	Between 16 -43 °C
ST	Between 10 – 30 °C
N	Between 16 – 32 °C
SN	Between 10 – 32 °C

**ADDITIONAL SUPPORT**

The following parts are available for the customer to undertake repairs at their own risk. Please carefully follow the guidance given in this manual including all safety measures.

- Door Handles
- Door Hinges

- Trays
- Baskets
- Door Gaskets

Parts can be obtained by calling the support service listed in this section. All repairs in this manual can be achieved using commonly available tools.

If you are in any doubt of your ability to carry out a repair, please use a professional repairer, also available through the support service.

Damage sustained to the appliance or future faults arising from poorly carried out repairs **will not be covered under warranty**.

## Help and assistance

If you require any technical guidance or find that your fridge-freezer is not operating as intended, a simple solution can often be found in the Troubleshooting section of these instructions or online at [www.bush-support.com](http://www.bush-support.com)

If you still require further assistance, call one of our experts on 0345 257 7271\*. To help us give you a fast and efficient service please have the following information ready.

Model Ref.	
Serial number	

You can find these on the rating plate – a small information panel (usually a sticker or metal plate) on the rear of your appliance

Date of purchase	
------------------	--

This will be shown on your receipt

Local call rates apply\*

**Lines open 8 am-7 pm Monday to Saturday an 10 am-4 pm Sunday.**

\*Calls to Bush inquiry lines may attract a charge and set up fee residential lines depending on your call plan/tariff.

Mobile and other provider's costs may vary, see [www.bt.com/pricing](http://www.bt.com/pricing) for details

For security and training purposes, telephone calls to and from customer service centers may be recorded and monitored. Calls from Republic of Ireland will attract international call charges

## Notes on disposal :



The symbol on the product or its packaging indicates that this product may not be treated as household waste. Instead, it should be handed over to the applicable collection point for the recycling of electrical and electronic equipment. By ensuring this product is disposed of correctly, you will help prevent potential negative consequences for the environment and human health, which could otherwise be caused by inappropriate waste handling of this product. For more detailed information about recycling this product, please contact your local council office, your household waste disposal service or the shop where the product was purchased.

## Documents / Resources



[BUSH BIE7030FF Built-In Combi Fridge](#) [pdf] Instruction Manual  
BIE7030FF, Built-In Combi Fridge, BIE7030FF Built-In Combi Fridge, Combi Fridge, Fridge

Manuals+.