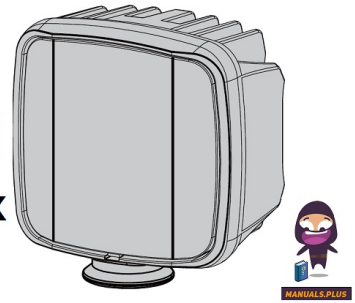


BUILT BRIGHT
BB45081
Work Pod
Task Max



BUILT BRIGHT BB45081 Work Pod Task Max Instruction Manual

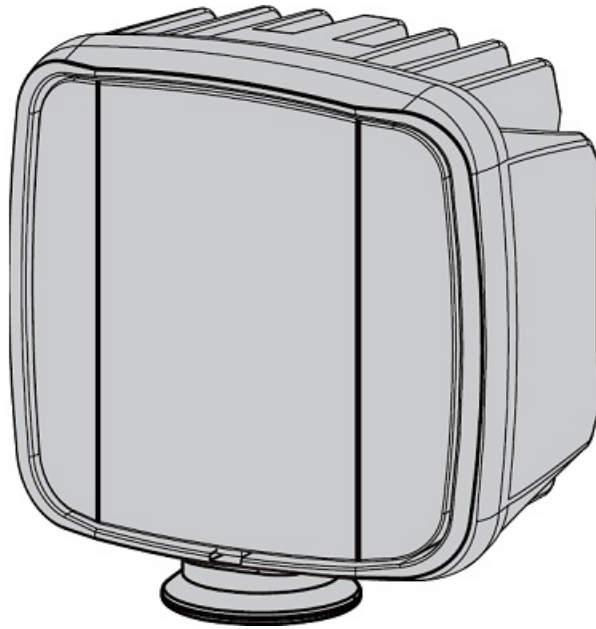
[Home](#) » [BUILT BRIGHT](#) » BUILT BRIGHT BB45081 Work Pod Task Max Instruction Manual 

Contents

- 1 BUILT BRIGHT BB45081 Work Pod Task Max
- 2 Product Usage Instructions
- 3 FAQ
- 4 INCLUDED
- 5 INSTALLATION
- 6 PARTS LIST
- 7 Angle Adjustment
- 8 WIRING
- 9 Dimensions
- 10 SPECIFICATIONS
- 11 WARRANTY
- 12 Customer Support
- 13 Documents / Resources
 - 13.1 References

BUILT BRIGHT™

BUILT BRIGHT BB45081 Work Pod Task Max



Specifications

- **Dimensions:** 4" (100mm)
- **Warranty:** 5 years against manufacturing defects

Product Usage Instructions

Installation

1. Select the installation area ensuring no interference with vehicle safety systems.
2. Assemble the U-mount bracket by inserting the spring-loaded adjusting lever and bolt.
3. Verify light operation by switching on the lights.
4. Aim the lamp, and tighten the adjusting lever and nut to secure the light in place.

Angle Adjustment

1. Place the light in the desired orientation.
2. Lock the bolt by turning the spring-loaded lever clockwise.
3. To unlock, turn the bolt counterclockwise with the lever.

Wiring

BB84002/BB84042 wiring harness (sold separately) is recommended for wiring. Refer to the diagram for proper wiring instructions.

FAQ

- **Q: What should I do if I need warranty service?**
 - **A:** Contact the authorized dealer from where you purchased the product for warranty service.
- **Q: Is the light angle adjustable?**
 - **A:** Yes, the light angle can be adjusted using the spring-loaded lever and bolt for secure positioning.

• **Q: Can I use any type of mounting bracket with this product?**

- **A:** No, specific U-mount brackets provided should be used for installation to ensure proper fit and function.

• **Q: Is the product waterproof?**

- **A:** The product is designed for commercial use and is built to withstand various weather conditions, but it is recommended to avoid direct exposure to heavy rainfall or submersion in water.

INCLUDED

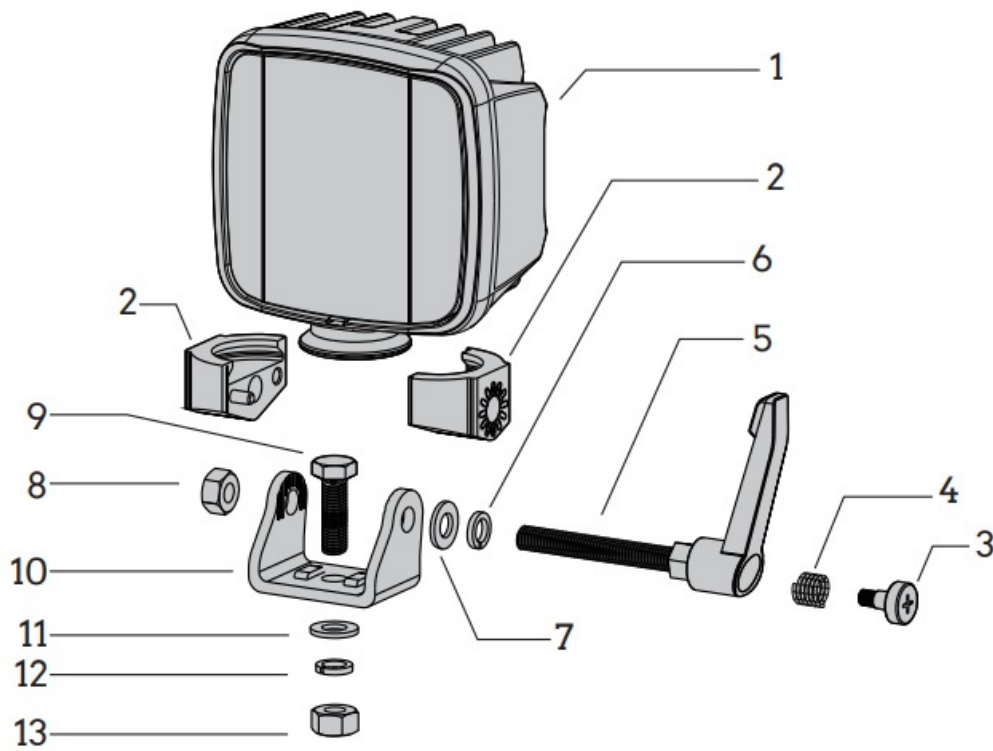
- 1x LED lamp
- 1x DT pigtail connector
- 1x 360° mount bracket
- 2x U mount brackets
- Mounting hardware

INSTALLATION

1. Select the area for installation and make sure not to interfere with any safety systems on your vehicle.
2. The U-mount bracket is not preassembled. Insert spring-loaded adjusting lever and bolt into either U mount bracket.
 - **Note:** Two different U-mount brackets are provided for your convenience.
3. Switch on the lights to verify light operation. Aim the lamp and tighten the adjusting lever (5) and nut (8).
4. Congratulations, enjoy your BUILT BRIGHT Work Pod Task.

PARTS LIST

1	Task light	8	Nut
2	Clamps	9	Mounting bolt
3	Phillips Screw	10	Mount Bracket
4	Spring	11	Flat washer
5	Adjusting Lever	12	Lock washer
6	Lock washer	13	Mounting Nut
7	Flat washer		



Angle Adjustment

- To meet the demands of commercial use, we have configured this light with a toolless, robust spring-loaded, locking lever and bolt to secure the light in place.
- To adjust the light, place the light in the final orientation you wish and lock the bolt by turning the spring-loaded lever clockwise. To unlock, turn the bolt counterclockwise with the lever.

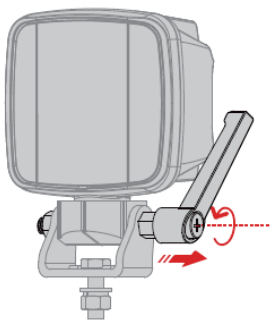


Figure 1

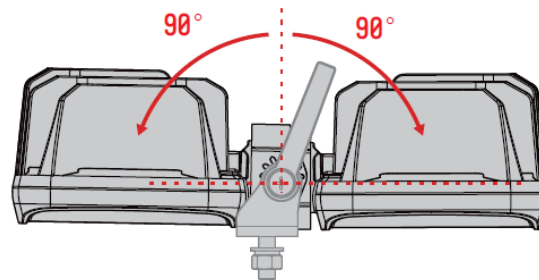


Figure 2
(With intended tall bracket)

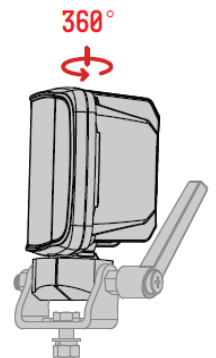
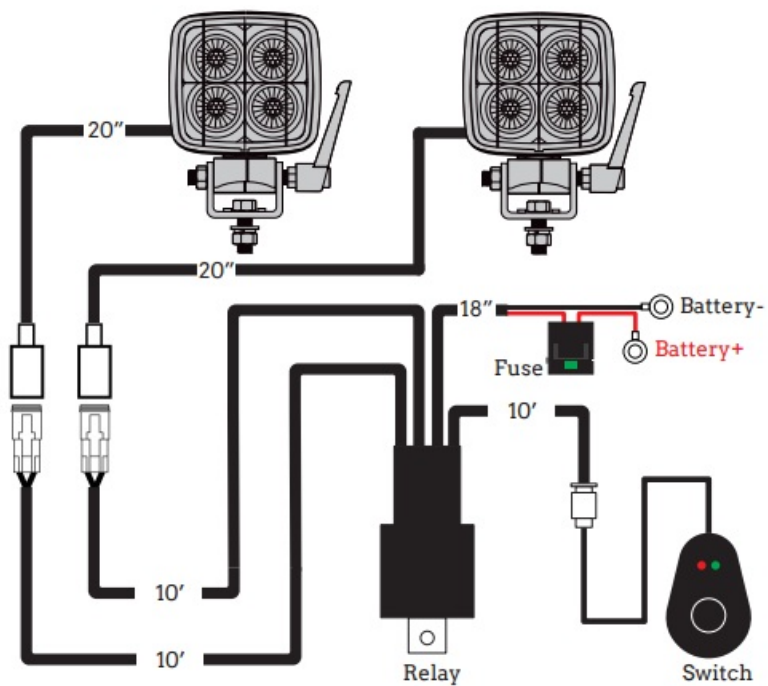


Figure 3

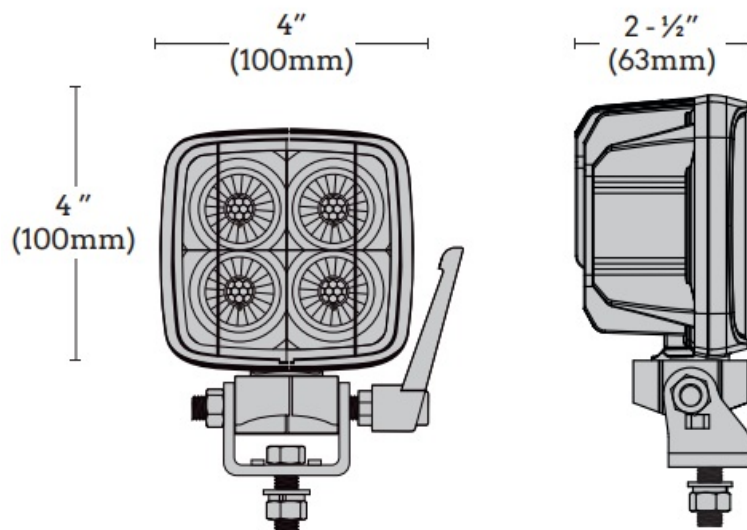
WIRING

BB45081

- Determine the appropriate mounting locations to install the LED Pods, wiring harness, and switch.
- Once all mounting locations are confirmed, connect the wires as shown above.
- Proper insulation at connections is required.
- Connect positive wire and negative wire properly. Press the switch to test if the lights are working properly.
- Adjust the light to the desired angle and then secure it by tightening all mounting screws and levers.
- BB84002/BB84042 wiring harness shown below is sold separately.



Dimensions



SPECIFICATIONS

BB45081

- **Power:** 58 Watts
- **Current draw @ 14VDC:** 4 Amps
- **Operating voltage:** 9-36V
- **16 LED chip** array
- **Ultra-strong UV stabilized polycarbonate** lens
- **EMC CISPR-25 Class 3** compliant

WARRANTY

- BUILTBRIGHT provides a (5) year warranty against manufacturing defects from the date of purchase. If

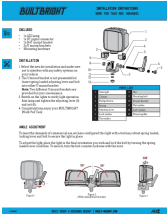
warranty service is needed, please contact the authorized dealer where your product(s) were originally purchased.

Customer Support

- Phone: 8886082220
- Email: support@built-bright.com
- Website: www.built-bright.com/pages/support
- BULTBRIGHT
- BASTROP, TEXAS 78602
- UNITED STATES OF AMERICA
- WWW.BUILT-BRIGHT.COM
- **WARNING:** CANCER AND REPRODUCTIVE HARM WWW.P65WARNINGS.CA.GOV
- BUILT RIGHT & DESIGNED BRIGHT
- BUILT-BRIGHT.COM



Documents / Resources

	BULTBRIGHT BB45081 Work Pod Task Max [pdf] Instruction Manual BB45081 Work Pod Task Max, BB45081, Work Pod Task Max, Pod Task Max, Task Max, Max
---	---

References

- [b Bright Rentals | Event Rentals for Professionals](#)
- [P65WARNINGS.CA.GOV](http://WWW.P65WARNINGS.CA.GOV)
- [User Manual](#)

[Manuals+](#), [Privacy Policy](#)

This website is an independent publication and is neither affiliated with nor endorsed by any of the trademark owners. The "Bluetooth®" word mark and logos are registered trademarks owned by Bluetooth SIG, Inc. The "Wi-Fi®" word mark and logos are registered trademarks owned by the Wi-Fi Alliance. Any use of these marks on this website does not imply any affiliation with or endorsement.