




## BUFFALO WZR2-G300N Wireless Router User Guide

[Home](#) » [BUFFALO](#) » BUFFALO WZR2-G300N Wireless Router User Guide 

### BUFFALO WZR2-G300N Wireless Router



## Contents

- [1 Package Contents](#)
- [2 Installation](#)
- [3 Connecting your AirStation](#)
- [4 AOSS](#)
- [5 Connect non-AOSS Clients](#)
- [6 Documents / Resources](#)
  - [6.1 References](#)
- [7 Related Posts](#)

## Package Contents

- WZR2-G300N AirStation
- AC Adapter
- CAT5 LAN cable
- Utility CD with Manual
- Quick Setup Guide
- Warranty Statement

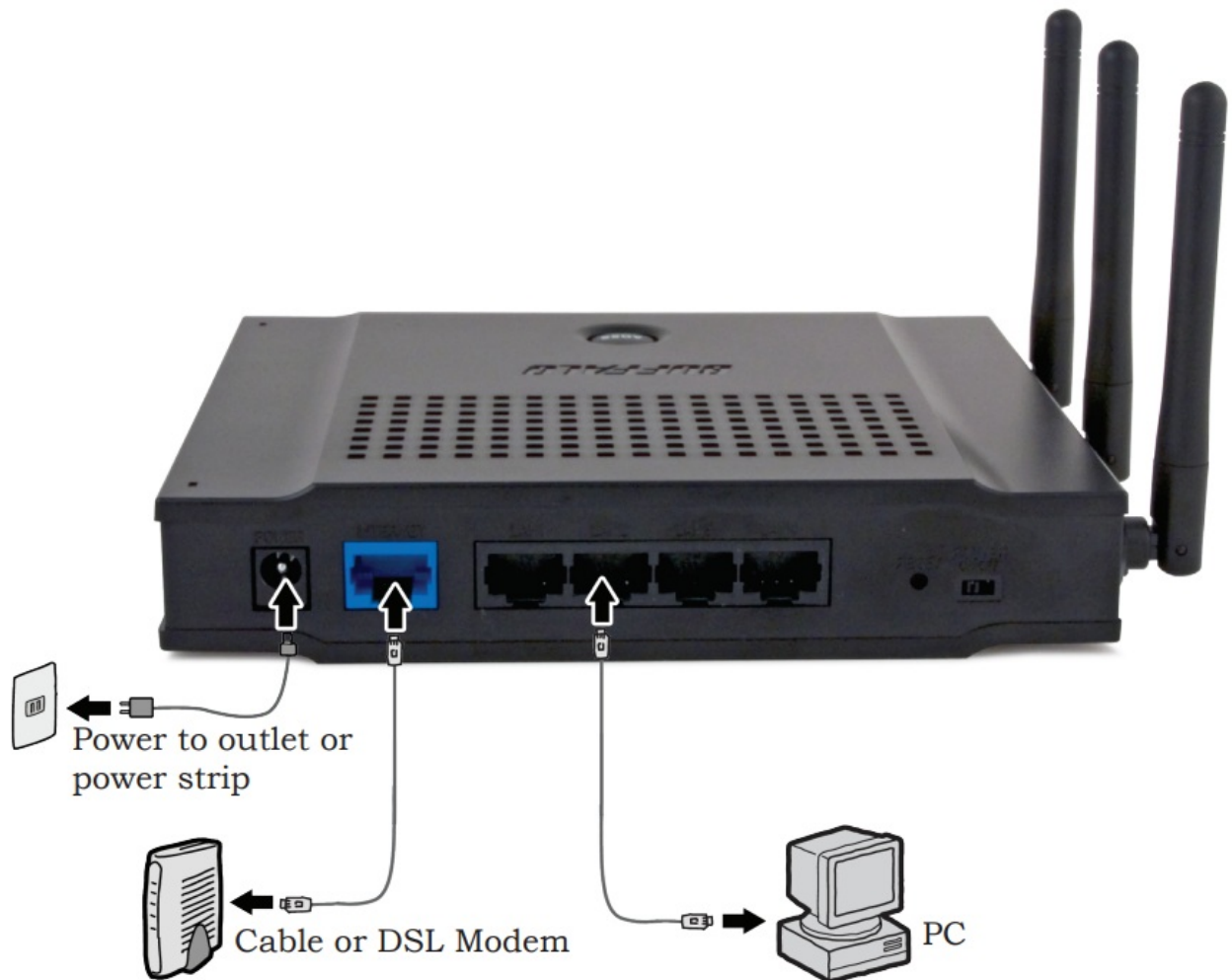
## Installation

Congratulations on your new purchase! To install the AirStation WZR-G300N Wireless Router and Access Point, insert the AirNavigator for Routers and Access Points CD in your computer and follow the steps shown. The program will step you through connecting your equipment and setting up your Internet connection.



For more detailed instructions, including directions for manual configuration, see the User Manual, located on the AirNavigator for Routers and Access Points CD.

## Connecting your AirStation



## AOSS



**AOSS** (AirStation One- Touch Secure System) is a simple system for configuring your wireless network securely. If your router and your client device are installed and both support AOSS, then making a secure wireless connection between them is simple.

A. Push the AOSS button on the top of your router and hold it in for a few seconds. The AOSS light will begin to flash amber.

B. You now have two minutes to push the AOSS button on your client device and finish the connection. If your client device is a PC card, CardBus, USB, or PCI adapter, the AOSS button will probably be in its Client Manager Software. Check your client device's AOSS setup information for instructions on where to push or click the AOSS button.

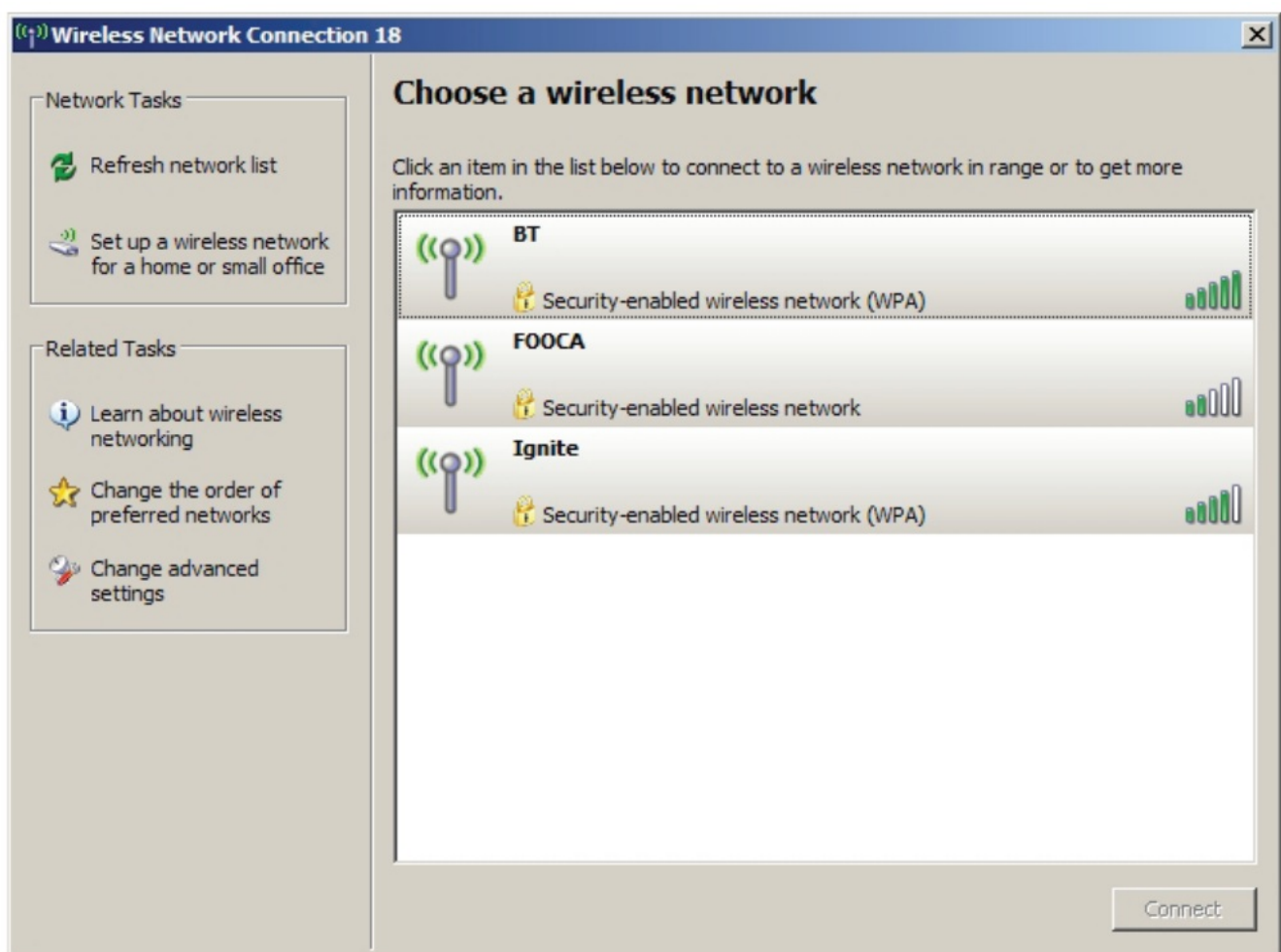
After you've pressed both buttons, it will take about 30 seconds for the connection to complete. When it's finished, the AOSS light will glow a solid amber, without blinking. You now have a secure network connection!

**Notes:** If your client devices do not support AOSS, or you don't want to use it, turn to page 5. Only one AOSS wireless client adapter can be configured with the AOSS router at a time. The buttons will need to be re-pressed to connect each additional AOSS wireless client adapter.

Additional non-AOSS wireless devices can be connected to your wireless network by connecting them manually. The encryption information is available in the AirStation Web Configuration Utility in the AOSS section. Please consult the User Manual on the AirStation CD-ROM for more information.

After you push the first AOSS button, you have 2 minutes to push the second AOSS button. If you run out of time, just push the first AOSS button again.

## Connect non-AOSS Clients



If a wireless client doesn't support AOSS, you'll have to configure it manually. Using the same SSID and encryption information that you entered during router configuration, enter the required credentials for each of your wireless clients. Consult your wireless client's documentation for instructions on configuring it to work with your new wireless network.

Congratulations! Your AirStation is installed and the basic setup has been configured. For advanced settings and more detailed information, consult the User Manual, located on your AirNavigator for Routers and Access Points

CD-ROM.

## Technical Support:

**North American** Technical Support by phone is available 24 hours a day, 7 days a week. (USA and Canada).

**Toll-free:** (866) 752-6210 | **Email:** [info@buffalotech.com](mailto:info@buffalotech.com)

European Technical Support is available between 9am-6pm (Monday-Thursday) (GMT) and 9am-4:30pm on Fridays (GMT)

**Phone (UK only):** 08712 50 12 60\*

**Phone:** +353 61 70 80 50

**Email:** [helpdesk@buffalo-technology.ie](mailto:helpdesk@buffalo-technology.ie)

\*Calls cost 8.5p per minute



---

## Documents / Resources



[BUFFALO WZR2-G300N Wireless Router](#) [pdf] User Guide  
WZR2-G300N Wireless Router, WZR2-G300N, Wireless Router, Router

## References

- [User Manual](#)

### [Manuals](#) - [Privacy Policy](#)

This website is an independent publication and is neither affiliated with nor endorsed by any of the trademark owners. The "Bluetooth®" word mark and logos are registered trademarks owned by Bluetooth SIG, Inc. The "Wi-Fi®" word mark and logos are registered trademarks owned by the Wi-Fi Alliance. Any use of these marks on this website does not imply any affiliation with or endorsement.