



BUFFALO CK164 Multi Function Food Processor Instruction Manual

[Home](#) » [BUFFALO](#) » **BUFFALO CK164 Multi Function Food Processor Instruction Manual** 

Contents

- [1 BUFFALO CK164 Multi Function Food Processor](#)
- [2 Product Information](#)
- [3 Safety Information](#)
- [4 Safety Instructions](#)
- [5 Introduction](#)
- [6 Installation](#)
- [7 Pack Contents](#)
- [8 Assembly](#)
- [9 Mounting the cutting](#)
- [10 Operation](#)
- [11 Changing the cutting blades](#)
- [12 Cleaning, Care & Maintenance](#)
- [13 Troubleshooting](#)
- [14 Technical Specifications](#)
- [15 Electrical Wiring](#)
- [16 Compliance](#)
- [17 DECLARATION OF CONFORMITY](#)
- [18 CONTACT](#)
- [19 Documents / Resources](#)
 - [19.1 References](#)
- [20 Related Posts](#)



BUFFALO CK164 Multi Function Food Processor



Product Information

This is a multi-function food processor designed for vegetable preparation in restaurants, canteens, and similar catering establishments. It is intended for commercial and indoor use only. The processor comes with various attachments, including cutting discs, an S blade, a flat lid, a lid plug, a food pusher, and a pressing plate.

Safety Information

1. Safety Instructions

- The processor is a dangerous appliance and should only be used by trained personnel in accordance with the provided instructions.
- It is important to avoid processing items that the machine is not designed for to prevent property damage or personal injury.

2. Installation

- When setting up the processor, make sure to position it on a level worktop to reduce vibration during operation.

3. Assembly

- Place the bowl onto the motor shaft and turn it anti-clockwise to lock it into place.
- Attach the cutting disc or S blade to the shaft.
- Add the slicing/grating disc with the side marked 'UP' facing upward.

- Place the feed chute lid on the bowl, using the locking tab to secure it.
- Insert the pressing plate and food pusher.
- For the S-blade attachment, secure the flat lid and insert the lid plug for adding ingredients during operation.

4. Operation

- Connect the appliance to the main power supply.
- Press the Start button (I) to turn it on.
- Use the Pulse button for short bursts of processing. Press and hold it to start and release it to stop.
- Press the Stop button (O) to turn off the processor once all food is cut.
- Disconnect the appliance from the power supply and allow the motor to cool down.
- Changing the Cutting Blades
- Turn off and disconnect the appliance from the main power supply.
- Reverse the assembly steps to remove the lid.
- Remove the current cutting disc or S blade and replace it with a new one.
- Ensure the appliance is clean and free from food debris before fitting the new blade.
- Re-mount the lid attachments.

Safety Instructions

The processor is a dangerous appliance and must only be used by trained personnel in accordance with these instructions. Intended for commercial and indoor use only! DO NOT process items that this machine is not designed for to avoid any property damage or personal injury.

- Position on a flat, stable surface.
- A service agent/qualified technician should carry out installation and any repairs if required. Do not remove any components on this product.
- Consult Local and National Standards to comply with the following:
 - Health and Safety at Work Legislation
 - BS EN Codes of Practice
 - Fire Precautions
 - IEE Wiring Regulations
 - Building Regulations
- DO NOT use jet/pressure washers to clean the appliance.
- DO NOT immerse the motor base in water.
- DO NOT bypass any safety interlocks on the appliance.
- DO NOT attempt to cut frozen food with the appliance.
- DO NOT feed food into the appliance by hand or objects (like knives). ALWAYS use the pusher supplied.
- Always switch off and disconnect the power supply to the appliance before putting on or taking off parts, when not in use, before cleaning maintenance, and storage.
- Be extremely careful when handling blades and inserts, especially when assembling/disassembling and cleaning. The blades are very sharp.
- DO NOT use with loose or damaged blades.
- Only use original BUFFALO parts and attachments with this appliance, or your guarantee will be invalidated.
- Leave at least 15mm clearance around the appliance for ventilation during use.

- ALWAYS keep hands, hair, and clothing away from the moving parts.
- NEVER leave the appliance unattended when in use.
- DO NOT move while in use. Switch off and unplug before appliance transporting.
- This appliance is not intended to be operated by means of an external timer or a separate remote-control system.
- Keep all packaging away from children. Dispose of the packaging in accordance with the regulations of local authorities.
- If the power cord is damaged, it must be replaced by a BUFFALO agent or a recommended qualified technician in order to avoid a hazard.
- This appliance is not intended for use by persons with reduced physical, sensory, or mental capabilities, or lack of experience and knowledge.
- This appliance must not be used by children under any circumstances.
- Keep the appliance and its cord out of reach of children.
- DO NOT let the cord hang over the edge of the table or counter, or touch hot surfaces.
- BUFFALO recommends that this appliance should be periodically tested (at least annually) by a Competent Person. Testing should include, but not be limited to: Visual Inspection, Polarity Test, Earth Continuity, Insulation Continuity, and Functional Testing.
- BUFFALO recommends that this product be connected to a circuit protected by an appropriate RCD (Residual Current Device).

Introduction

Please take a few moments to carefully read through this manual. Correct maintenance and operation of this machine will provide the best possible performance from your BUFFALO product. This machine is designed for vegetable preparation in restaurants, canteens, and similar catering establishments. BUFFALO will not accept liability for product failures in the event that:

- The instructions in this manual have not been followed correctly.
- Unqualified or unauthorized personnel have adjusted the appliance.
- The appliance has not been handled and cleaned correctly.
- The appliance has been used for a purpose for which it was not intended.

Installation

Remove the appliance from the packaging. While positioning on a worktop, ensure the feet are level to reduce vibration during operation.

Pack Contents

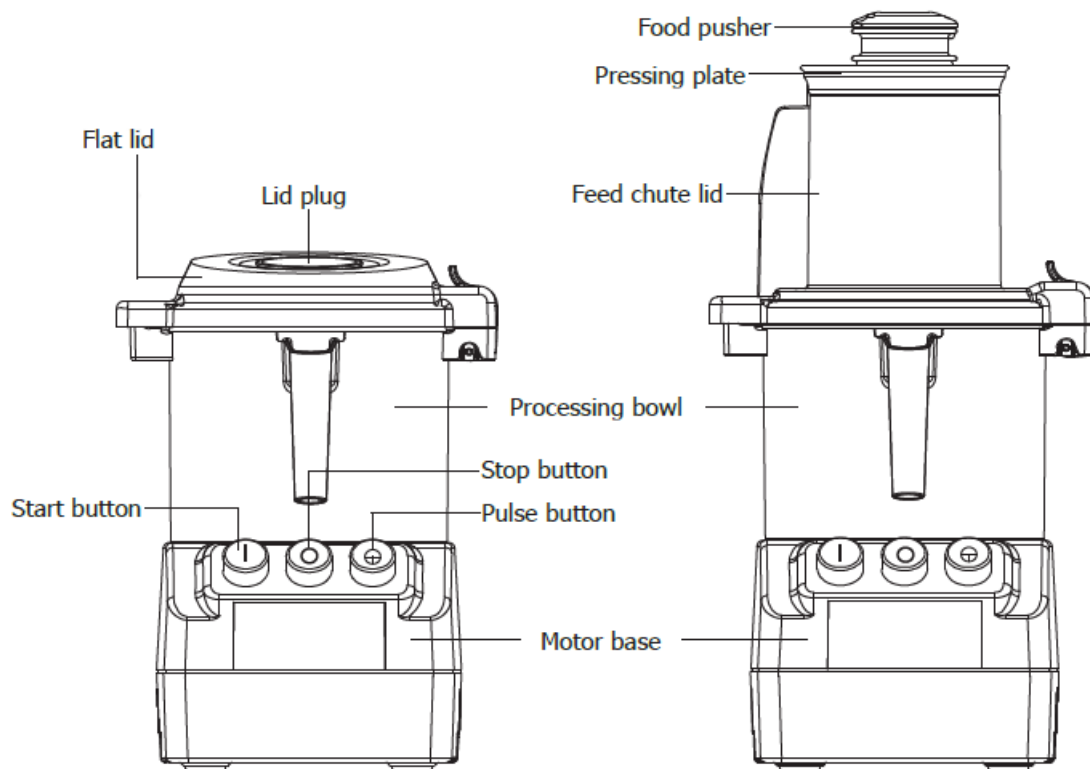
The following is included:

- Motor base with shaft pre-mounted
- Processing bowl
- Flat lid
- Lid plug

- S blade
- Food pusher
- Pressing plate
- Feed chute lid
- Disc stem
- 2mm slicing disc (x1): for thin slicing
- 4mm slicing disc (x1): for thick slicing
- 5mm grating disc (x1): not recommended for cutting onions
- Instruction manual

BUFFALO prides itself on quality and service, ensuring that at the time of unpacking the contents are supplied fully functional and free of damage. Should you find any damage as a result of transit, please contact your BUFFALO dealer immediately.

Assembly



Before assembly, ensure to:

- Switch off and disconnect the appliance from the power supply.
- Clean all cutting discs and parts that come into contact with food with warm soapy water.
- For details, refer to the section “Cleaning, care & maintenance”.
- Never immerse the motor base in water, nor rinse it under running water.

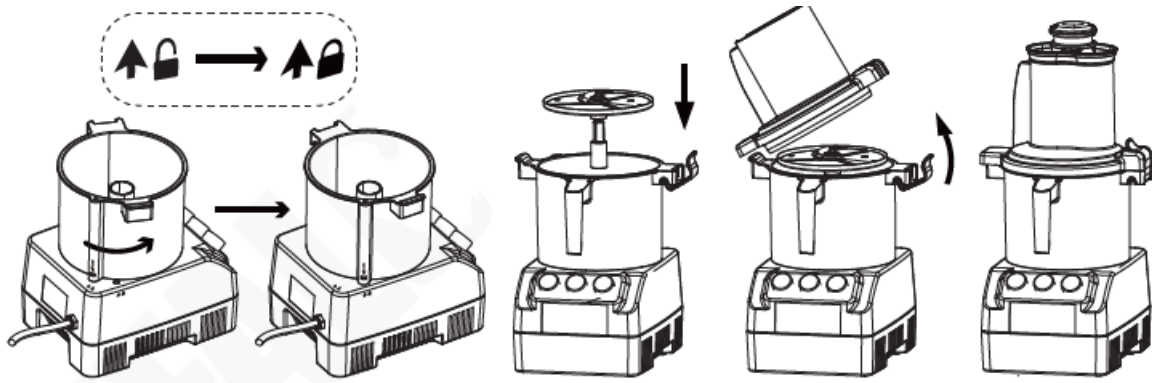
Warning:

- BUFFALO accepts no responsibility for property damage or personal injury caused by incorrect assembly/disassembly. Cutting blades are sharp! Handle with care!
- Equipped with a safety interlock system, the appliance will not start before the parts are securely mounted.

Mounting the cutting

Mounting the cutting disc and feed chute attachments

1. Place the bowl onto the motor shaft, then turn anti-clockwise to lock it into place.
2. Place the disc stem onto the shaft, then add the slicing/grating disc (side marked with 'UP' facing upward).
3. Place the feed chute lid on the bowl, resting its left end then right end using the locking tab on the bowl.
4. Insert the pressing plate and food pusher.

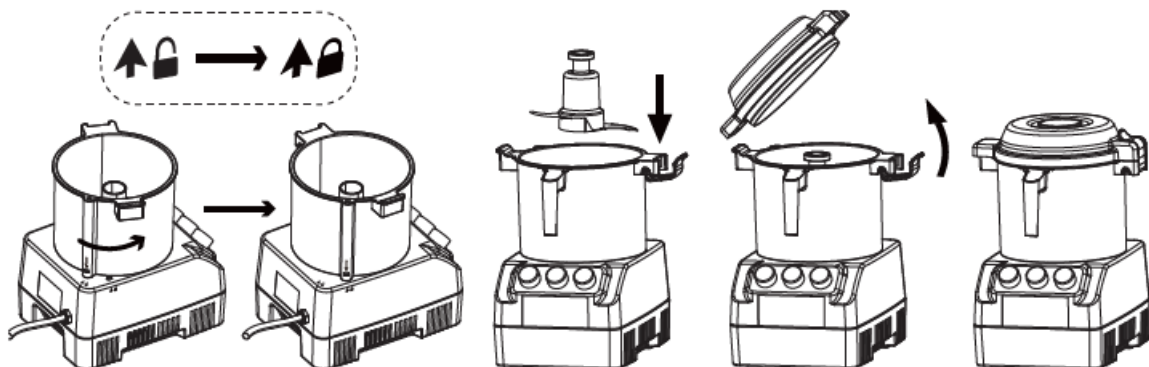


Tips:

- Choose desired cutting disc according to food type and desired food shape to achieve.
- Pre-cut food into smaller pieces according to the diameter of feed tube.
- Only use provided pusher to push food down when in use and feed gradually.
- If large quantity of food needs to process, divide into several batches.

Mounting the S blade and flat lid attachments

1. Mount the bowl as instructed above. Then locate the S blade onto the shaft (Ensure to remove the plastic protective sleeve first).
2. Put food in, then secure the flat lid.
3. Insert the lid plug, which can be used to add ingredients during operation.



Operation

1. Connect the appliance to the mains power supply.
2. Press the Start button (I) to turn on.
 - **Pulse function:** Press down and hold the pulse button to start. Release to stop.

3. Once all food are cut, press the Stop button (O) to turn Off. Disconnect from power supply and let the motor cool down.

Changing the cutting blades

Warning: Cutting blades are sharp! Handle with care!

1. Turn off and disconnect the appliance from the mains power supply.
2. Reverse the steps as stated in section “Assembly” to remove the lid.
3. Remove the cutting disc or S blade then slot a new one in place.
 - **Note:** Ensure the appliance is clean and free from food debris to ensure the cutting disc/blade can be securely fitted.
4. Re-mount the lid attachments.

Cleaning, Care & Maintenance

- Always turn off and disconnect the appliance from the power supply before cleaning.
- Allow to cool before cleaning.
- Let the motor come to a complete stop before disassembly and cleaning.
- Remove all food debris.
- Never immerse the motor base in water, nor rinse it under running water. Clean the surface using a damp cloth.
- Use warm, soapy water and a damp cloth to clean all removable parts. No parts are dishwasher safe.
- Dry all parts well and re-assemble.
- Periodically lubricate the shaft with some vegetable oil.

Troubleshooting

A qualified technician must carry out repairs if required.

Fault	Probable Cause	Solution
The unit is not working	The unit is not switched on	Check the unit is plugged in correctly and switched on
	Plug or lead is damaged	Replace plug or lead
	The fuse in the plug has blown	Replace the plug fuse
	The mains power supply fault	Check the mains power supply
The unit does not work after assembled	The safety interlock system is functioning due to improper assembling	Assemble the appliance correctly, referring to the section "Assembly"
The appliance stops working suddenly	Overheating protection is activated due to overload or short circuit	<ol style="list-style-type: none"> 1. Turn off and disconnect from the power supply 2. Empty the bowl and allow it to cool down for about 15 seconds 3. Restart the appliance

Technical Specifications

Note: Due to our continuing program of research and development, the specifications herein may be subject to change without notice.

Model	Voltage	Power	Current	Bowl capacity	Speed (RPM)	Dimensions H x W x D mm	Net Weight
CK164	220-240V~ 50Hz	600W	2.65A	3L	1500	501 x 234 x 253	8.76kg

Electrical Wiring

- This appliance is supplied with a 3-pin BS1363 plug and lead.
- The plug is to be connected to a suitable main socket.

This appliance is wired as follows:

- Live wire (colored brown) to the terminal marked L
- Neutral wire (colored blue) to the terminal marked N
- Earth wire (colored green/yellow) to the terminal marked E
- This appliance must be earthed.
- If in doubt consult a qualified electrician.
- Electrical isolation points must be kept clear of any obstructions. In the event of any emergency disconnection being required, they must be readily accessible.

Compliance

- The WEEE logo on this product or its documentation indicates that the product must not be disposed of as household waste.
- To help prevent possible harm to human health and/or the environment, the product must be disposed of in an approved and environmentally safe recycling process.
- For further information on how to dispose of this product correctly, contact the product supplier, or the local authority responsible for waste disposal in your area.
- BUFFALO parts have undergone strict product testing in order to comply with regulatory standards and specifications set by international, independent, and federal authorities.
- BUFFALO products have been approved to carry the following symbol:



All rights reserved. No part of these instructions may be produced or transmitted in any form or by any means, electronic, mechanical, photocopying, recording, or otherwise, without the prior written permission of BUFFALO. Every effort is made to ensure all details are correct at the time of going to press, however, BUFFALO reserves the right to change specifications without notice. CK164_ML_A5_v1_20230724.indb 7 2023/7/24 17:19

DECLARATION OF CONFORMITY

Equipment Type • Uitrustingstype • Type d'équipement • Gerätetyp • Tipo di apparecchiatura • Tipo de equipo		Model • Modèle • Modell • Modello • Modelo
Multi Function Food Processor		CK164 (& -E)
Application of Territory Legislation & Council Directives(s) Toepassing van Europese Richtlijn(en) • Application de la/des directive(s) du Conseil • Anwendbare EU-Richtlinie(n) • Applicazione delle Direttive • Aplicación de la(s) directiva(s) del consejo	Machinery Directive 2006/42/EC Supply of Machinery (Safety) Regulations 2008 BS EN 1678: 1998 +A1:2010 BS EN 12852: 2001 +A1:2010 BS EN ISO 12100: 2010 BS EN 60204-1: 2018 Electro-Magnetic Compatibility (EMC) Directive 2014/30/EU - recast of 2004/108/EC Electromagnetic Compatibility Regulations 2016 (S.I. 2016/1091) BS EN IEC 55014-1: 2021 BS EN IEC 55014-2: 2021 BS EN IEC 61000-3-2: 2019 +A1:2021 BS EN 61000-3-3: 2013 +A1:2019 +A2:2021 Restriction of Hazardous Substances Directive (RoHS) 2015/863 amending Annex II to Directive 2011/65/EU Restriction of the Use of Certain Hazardous Substances in Electrical and Electronic Equipment Regulations 2012 (S.I. 2012/3032)	
Producer Name • Naam fabrikant • Nom du producteur • Name des Herstellers • Nome del produttore • Nombre del fabricante		Buffalo

I, the undersigned, hereby declare that the equipment specified above conforms to the above Territory Legislation, Directive(s) and Standard(s).



Ik, de ondergetekende, verklaar hierbij dat de hierboven gespecificeerde uitrusting goedgekeurd is volgens de bovenstaande Richtlijn(en) en Standaard(en).

Je soussigné, confirme la conformité de l'équipement cité dans la présente à la / aux Directive(s) et Norme(s) ci-dessus

Ich, der/die Unterzeichnende, erkläre hiermit, dass das oben angegebene Gerät der/den oben angeführten Richtlinie(n) und Norm(en) entspricht.

Il sottoscritto dichiara che l'apparecchiatura di sopra specificata è conforme alle Direttive e agli Standard sopra riportati.

El abajo firmante declara por la presente que el equipo arriba especificado está en conformidad con la(s) directiva(s) y estándar(es) arriba mencionadas.

Date • Data • Date • Datum • Data • Fecha	12 th July 2023	
Signature • Handtekening • Signature • Unterschrift Firma • Firma	DocuSigned by:  B39382C9FD9C478...	DocuSigned by:  D352874F7FAB460...
Full Name • Volledige naam • Nom et prénom • Vollständiger Name • Nome completo • Nombre completo	Ashley Hooper	Eoghan Donnellan
Position • Functie • Fonction • Position • Qualifica • Posición	Technical & Quality Manager	Commercial Manager/ Importer
Producer Address • Adres fabrikant • Adresse du producteur • Anschrift des Herstellers • Indirizzo del produttore • Dirección del fabricante	Fourth Way, Avonmouth, Bristol, BS11 8TB United Kingdom	Unit 9003, Blarney Business Park, Blarney, Co. Cork Ireland


CONTACT

- UK/Eire +44 (0)845 146 2887
- NL 040 – 2628080
- FR 01 60 34 28 80
- BE-NL 0800-29129
- BE-FR 0800-29229
- DE 0800 – 1860806
- IT N/A
- ES 901-100 133

<http://www.buffalo-appliances.com/>.



Documents / Resources

	<p>BUFFALO CK164 Multi Function Food Processor [pdf] Instruction Manual CK164 Multi Function Food Processor, CK164, Multi Function Food Processor, Function Food Processor, Food Processor, Processor</p>
---	---

References

- [🌐 Buffalo Home Page](#)