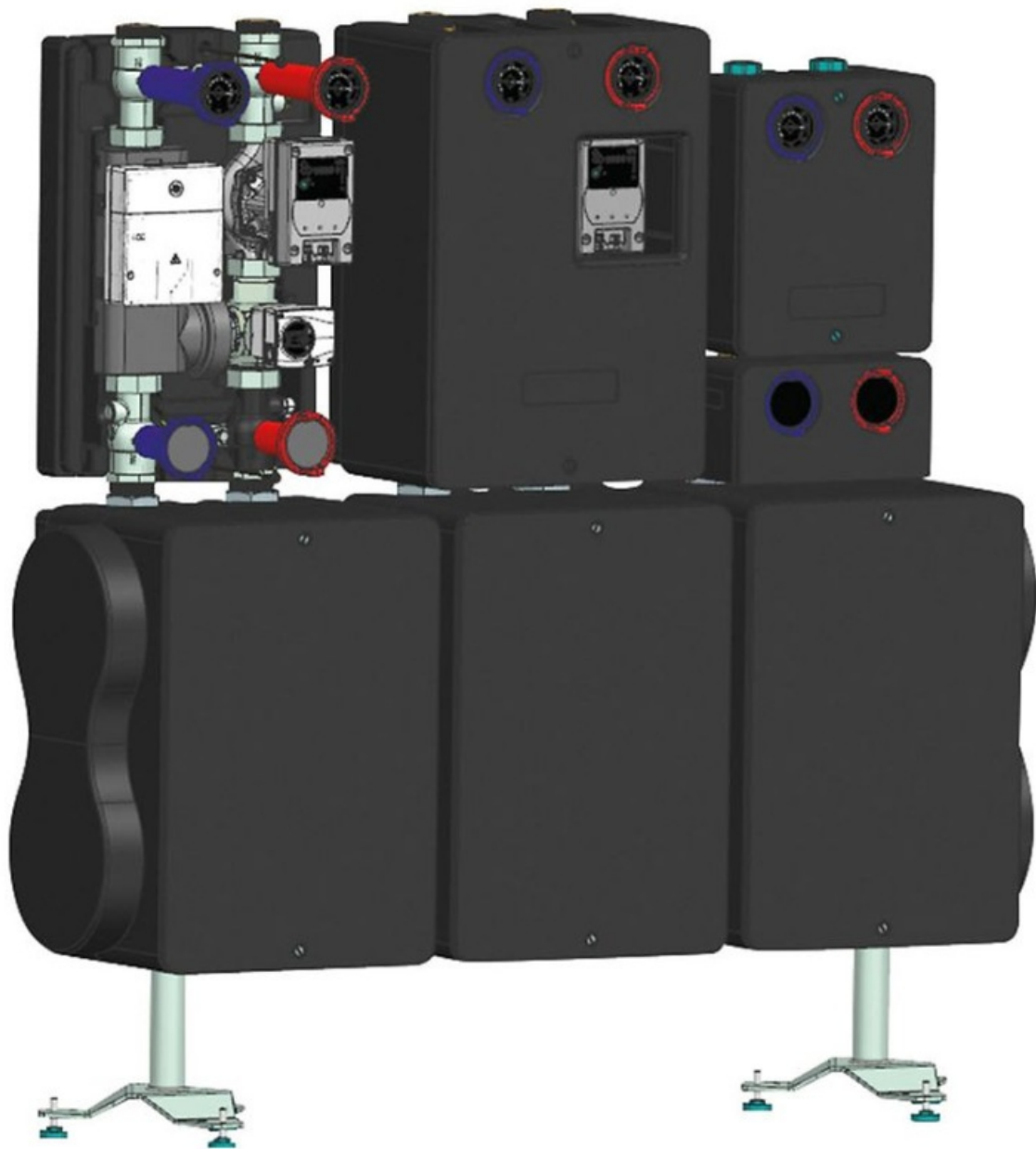


Buderus HSM 40 Heating Circuit Sets Logaflow Instructions

[Home](#) » [Buderus](#) » Buderus HSM 40 Heating Circuit Sets Logaflow Instructions 

Buderus HSM 40 Heating Circuit Sets Logaflow



Contents

- [1 New heating circuit sets](#)
- [2 Product View](#)
- [3 Search engine optimization](#)
- [4 Social media / newsletter lead](#)
- [5 Customers Support](#)
- [6 Documents / Resources](#)
 - [6.1 References](#)
- [7 Related Posts](#)

New heating circuit sets

Buderus heating circuit sets Loga flow HSM 40/50 for the medium output range save considerable time when installing heating circuit distribution systems

Buderus is introducing new heating circuit sets Loga flow HSM 40/50 for the medium output range that are designed for the nominal sizes of DN40 and DN50. They can be used up to an output of around 200 kW. The sets are based on the same modular principle as the smaller versions trade partners have been familiar with for years.

All important components for the respective heating circuit are pre assembled, which enables fast, error-free integration into the system.

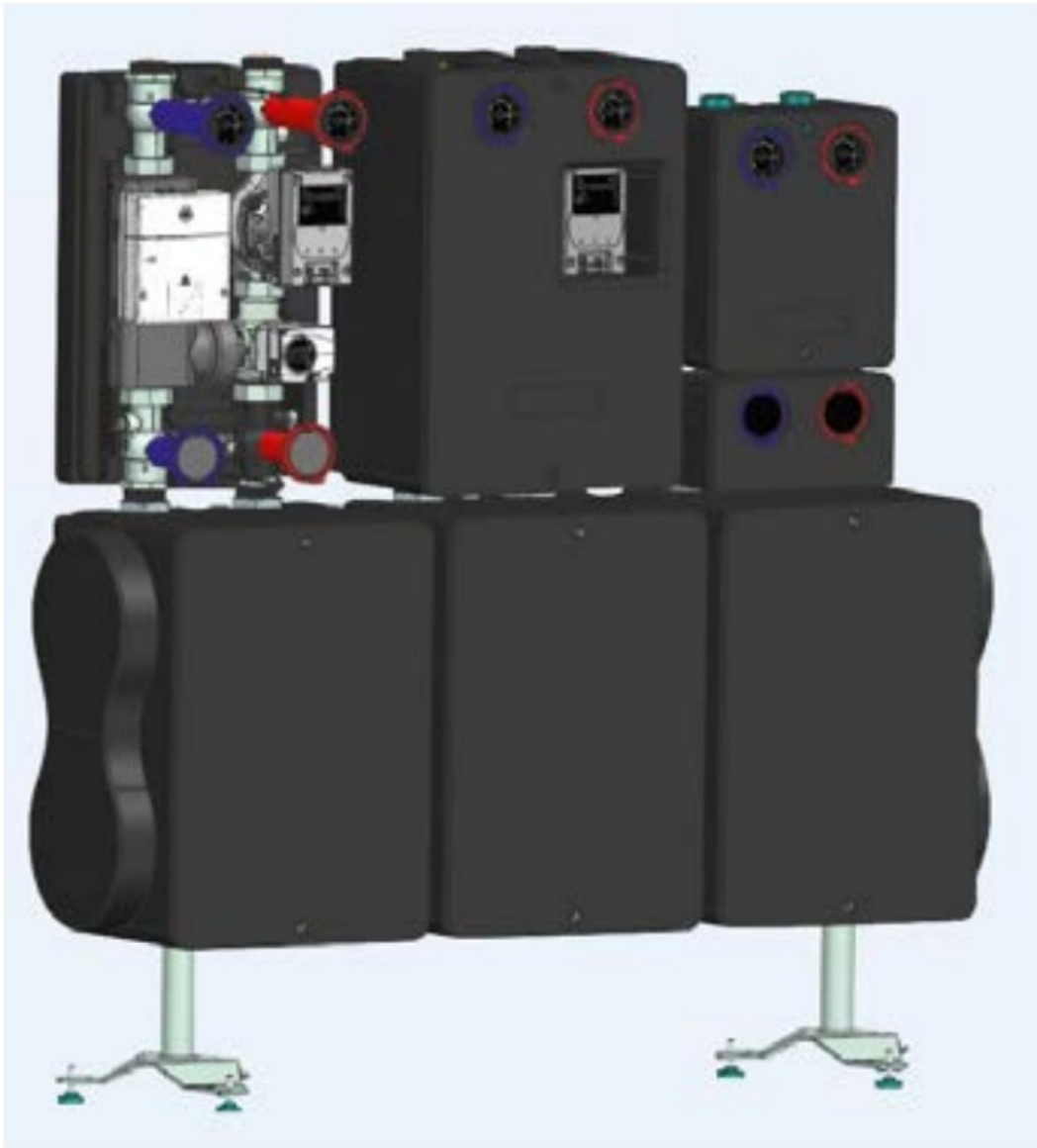
A total of eight new heating circuit sets are available. Four are adapted to the Logamatic EMS plus control system with the Logamatic MM100 module and four are designed for the Logamatic 5000 control system. The heating circuit sets also differ in terms of the pre-mounted pumps. Buderus uses the Wilo Para Maxo pumps for the Logamatic EMS plus heating circuit sets and the KSB Calio pumps for the Logamatic 5000 sets.

New are the HKV2/G2/DN125 and HKV3/G2/DN125 heating circuit manifolds for the installation of two or three HS40 or HS50 sets. A great advantage: Thanks to their flange connections, the heating circuit manifolds can be freely combined with each other. This makes it possible to cascade up to six heating circuit sets, which can transmit a maximum of 1200 kW. Buderus has tested the installation with trade partners – it took just one morning to install the cascade of six heating circuit sets, leaving only the electrical connections to be made. This is a considerable time saving compared to the conventional installation of a heating circuit distribution system.

If required, the smaller heating circuit sets such as the HS32/7,5 can be installed on the new heating circuit manifolds. An HS32 180/130 adapter set has been added to the range of accessories for this purpose.

The Buderus heating circuit sets are based on a modular principle. Sets are available with or without a mixer, with or without a Logamatic MM100 or with a Logamatic MM100 and a mixer. So far, the sets have been used in the small output range of up to 75 kW and for the nominal size of DN32.

Trade partners have several options for installation: While a single set can be installed on the wall using a wall mounting kit, the heating circuit manifolds are used to install several heating circuit sets. All sets are fitted with four ball valves for flow and return at the top and bottom. As the main components are located between the ball valves, the sets are particularly easy to service.



Caption:

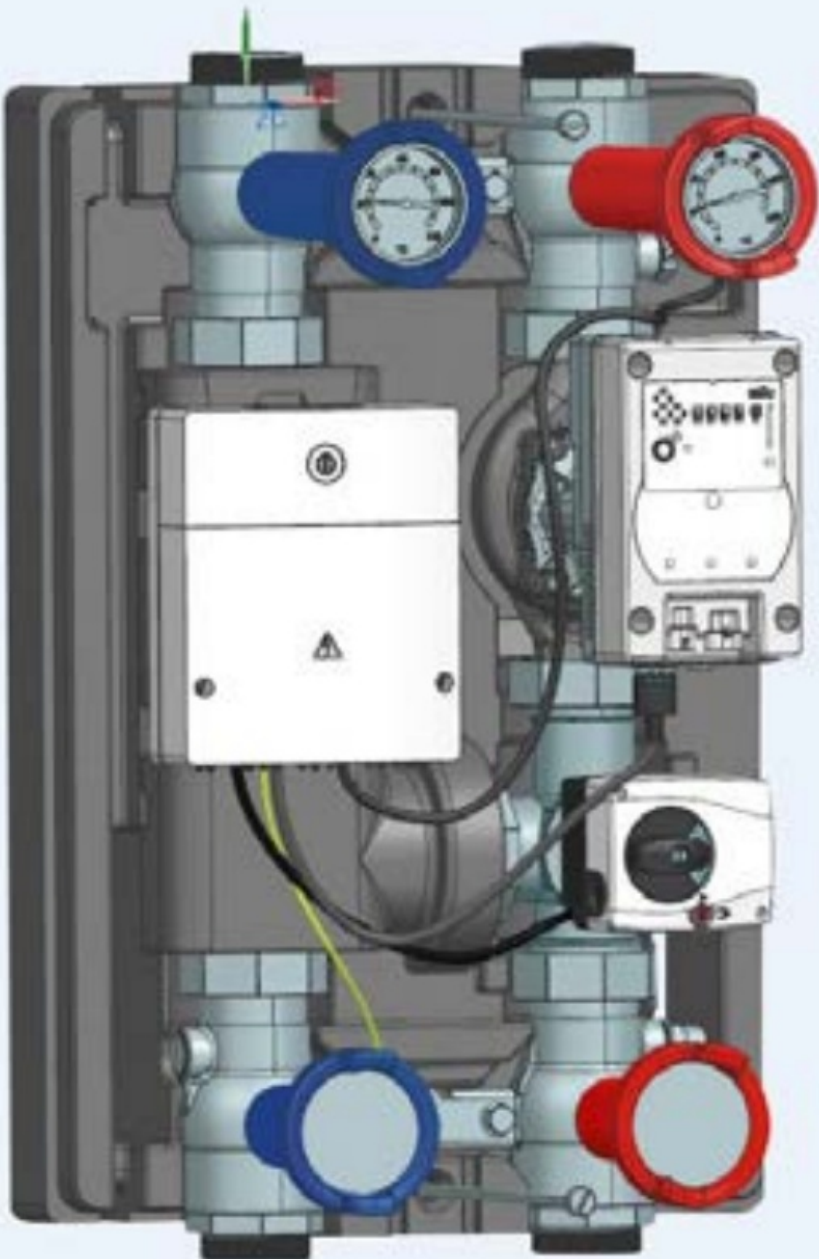
The new heating circuit sets Loga flow HSM 40/50 can be installed as a cascade and thus transmit up to 1200 kW.

Product View

Meta data for your online and social media channels

The following information makes it easier for you to publish the present press release on your online and social media channels.

Use the snippets to optimize your websites for search engines, for your email newsletters or to reach your readers via Facebook and Twitter.





Caption:

The location and accessibility of the components make the new heating circuit sets particularly easy to maintain.

Caption:

Buderus offers four new heating circuit sets each for the Logamatic EMS plus and Logamatic 5000 control systems.

Search engine optimization

- **Meta description**

The new Buderus heating circuit sets for the medium output range are designed for the nominal sizes of DN40 and DN50.

They can be used up to an output of around 200 kW. All important components for the respective heating circuit are preassemble, which enables fast, error-free integration into the system.

- **Tags/keywords**

Buderus; heating circuit sets; installation; heating systems

Social media / newsletter lead

- **Newsletter lead**

The new Buderus heating circuit sets Loga flow HSM40/50 for the medium output range are designed for the nominal sizes of DN40 and DN50. They can be used up to an output of around 200 kW. The sets are based on the same modular principle as the smaller versions trade partners have been familiar with for years. All important components for the respective heating circuit are pre-assembled, which enables fast, error-free integration into the system.

- **Facebook**

The new Buderus heating circuit sets Loga flow HSM40/50 for the medium output range are designed for the nominal sizes of DN40 and DN50. They can be used up to an output of around 200 kW. The sets are based on the same modular principle as the smaller versions trade partners have been familiar with for years. All important components for the respective heating circuit are pre-assembled, which enables fast, error-free integration into the system.

- **Twitter**

The new #Buderus #heatingcircuitsets Loga flow HSM40/50 for the medium output range are designed for the nominal sizes of DN40 and DN50. They can be used up to an output of around 200 kW. All important #components for the respective heating circuit are pre-assembled.

Buderus, one of Europe's strongest brands in the terotechnology sector, is a provider of efficient and reliable system solutions for heating, ventilation and cooling. As a systems expert for heating and installation technology, Buderus is distinguished by its consulting expertise, integrated services and perfectly matched energy-efficient and connectable heating systems from a single source. The product portfolio covers everything from heat generators for liquid and gaseous energy sources to storage tanks, controls and heating accessories to a comprehensive range of renewable energy systems such as heat pumps and solar thermal systems.

All Buderus products offer maximum system compatibility, as all components are perfectly matched.

This enables trade partners to install individual solutions quickly and efficiently, both in new and existing buildings, regardless of whether the system is large or small.

For more information, visit www.buderus.de.


For supplier lists: Buderus, Bosch Thermotechnik GmbH, Buderus Deutschland, Sophienstraße 30–32, 35576 Wetzlar, info@buderus.de, phone +49 6441 418-0, fax +49 6441 45602, www.buderus.de

Customers Support



Bosch Thermotank GmbH
Buderus Deutschland
Jörg Bonkowski
Sophienstraße 30–32
D-35576 Wetzlar
Phone: +49 (0) 6441 418-1614
Mobile: +49 (0) 160 7067935
E-mail: joerg.bonkowski@de.bosch.com
www.buderus.de



Documents / Resources

	<p>Buderus HSM 40 Heating Circuit Sets Logaflow [pdf] Instructions</p> <p>HSM 40 Heating Circuit Sets Logaflow, HSM 40, Heating Circuit Sets Logaflow, Circuit Sets Logaflow, Sets Logaflow</p>
---	---

References

-  [Invented for life | Bosch Global](#)
-  [Buderus - Systemlösungen für Heizung, Solar, Wärmepumpen](#)
- [User Manual](#)

Manuals+, Privacy Policy

This website is an independent publication and is neither affiliated with nor endorsed by any of the trademark owners. The "Bluetooth®" word mark and logos are registered trademarks owned by Bluetooth SIG, Inc. The "Wi-Fi®" word mark and logos are registered trademarks owned by the Wi-Fi Alliance. Any use of these marks on this website does not imply any affiliation with or endorsement.