

**bticino**  
**YW4574CWG**

**Series**  
**Wireless**  
**Wake-Up Sleep**  
**Scenario**  
**Controls**



## bticino YW4574CWG Series Wireless Wake Up Sleep Scenario Controls Installation Guide

[Home](#) » [bticino](#) » bticino YW4574CWG Series Wireless Wake Up Sleep Scenario Controls Installation Guide 

### Contents

- 1 [bticino YW4574CWG Series Wireless Wake-Up Sleep Scenario Controls](#)
- 2 [Product Specifications](#)
- 3 [Product Usage Instructions](#)
- 4 [FAQ](#)
- 5 [Description](#)
- 6 [Configuration](#)
- 7 [Mounting](#)
- 8 [Disassembling](#)
- 9 [Technical features](#)
- 10 [Documents / Resources](#)
  - 10.1 [References](#)

**bticino**

**bticino YW4574CWG Series Wireless Wake-Up Sleep Scenario Controls**



## Product Specifications

- Model Numbers: YW4574CWG, YD4574CWG, YG4574CWG
- Power Output: 18W
- MAC Address: 00:04:74:00:00:7A:8A:F8
- Wireless Connectivity: Radio (Wireless Mesh Networks)

## Product Usage Instructions

### Installation

1. Identify the fixing holes with a center distance of 83.5mm for mounting.
2. Use the provided cut-out to transform the frame from 3 to 2 modules if needed.
3. Secure the device using the fixing holes with a center distance of 60mm.
4. Locate and use the control pushbutton for operation.
5. Apply any necessary stickers in the designated area.

### Factory Reset

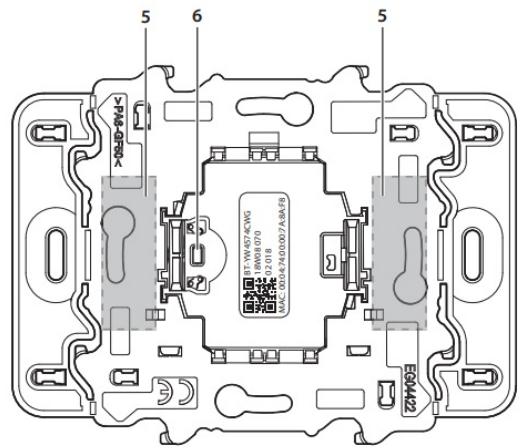
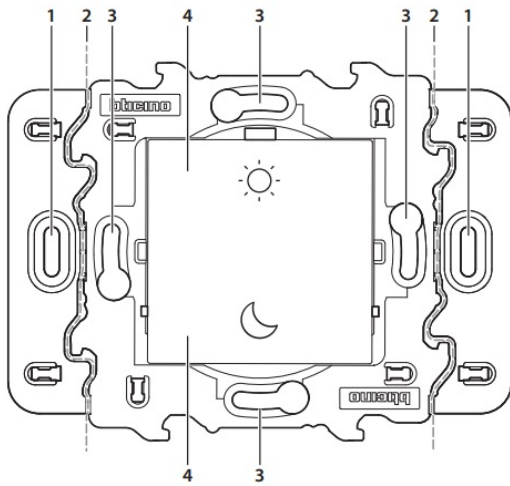
To perform a factory reset:

1. Press and hold the factory reset pushbutton for 7 seconds.

## FAQ

- **Q: How do I reset the device to factory settings?**
  - **A:** Press and hold the factory reset pushbutton for 7 seconds to initiate a factory reset.
- **Q: What is the wireless connectivity technology used by the device?**
  - **A:** The device uses Radio technology for wireless mesh networks.
- **Q: What are the different model numbers available for this product?**
  - **A:** The available model numbers are YW4574CWG, YD4574CWG, and YG4574CWG.

## Description



1. Fixing holes (centre distance 83.5 mm)
2. Cut-out for the transformation of the frame from 3 to 2 modules
3. Fixing holes (centre distance 60 mm)
4. Control pushbutton
5. Adhesive positioning area
6. Factory reset pushbutton; press for 7 seconds

## Configuration

For device configuration and installation and for any other information, refer to the App or documentation that can be downloaded from the website:



- [www.homesystems-legrandgroup.com](http://www.homesystems-legrandgroup.com)

ANDROID: requires Android 5.0 or later with access to Google Play

## ANDROID



iOS: requires an iPhone with iOS 12,0 or later

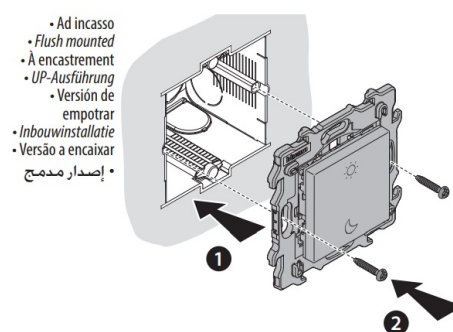
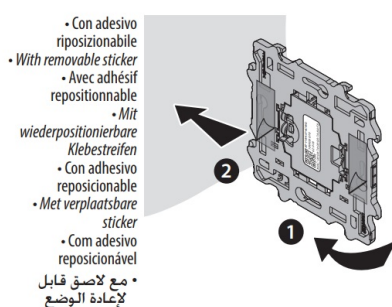
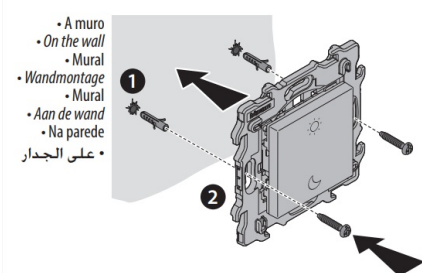
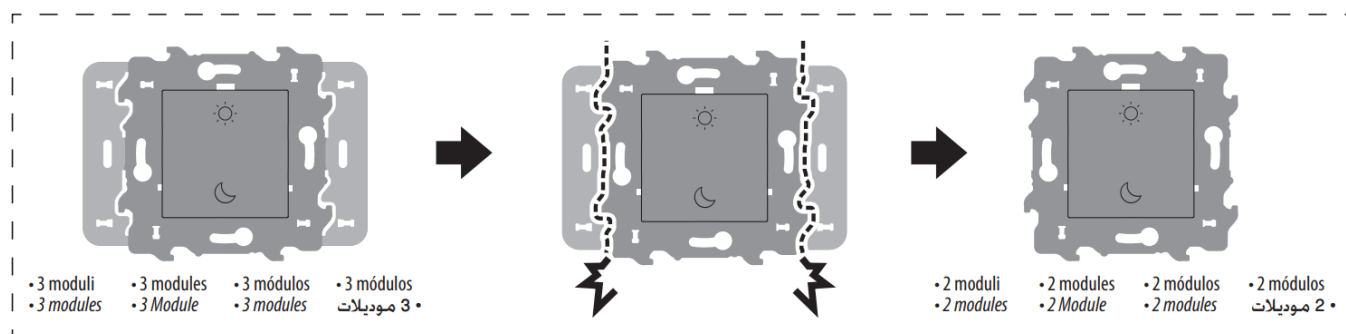


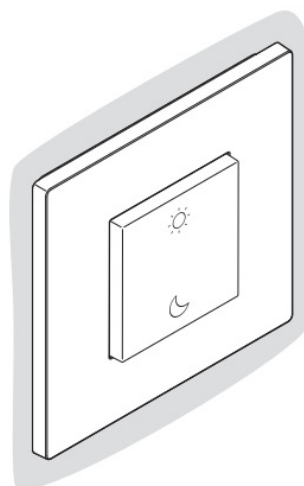
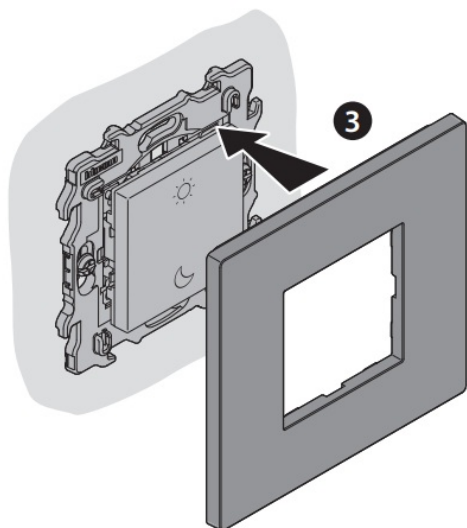
Download App



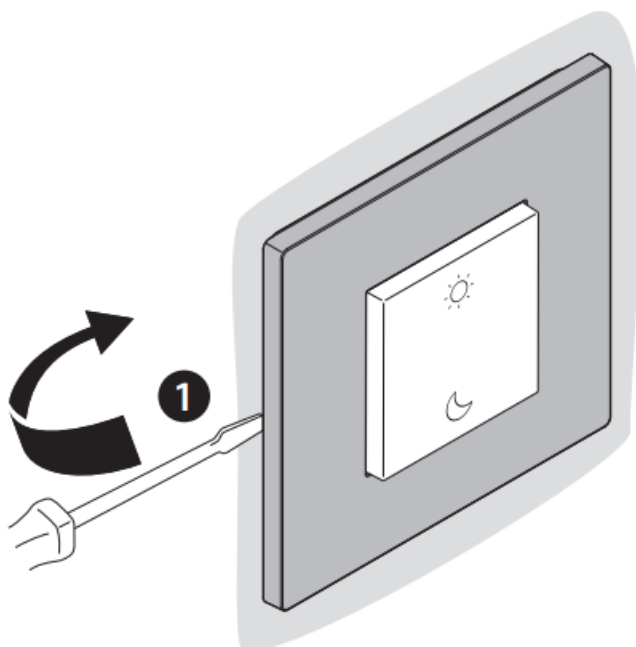
Home + Control

## Mounting

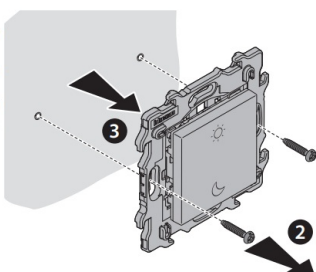




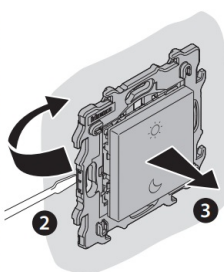
## Disassembling



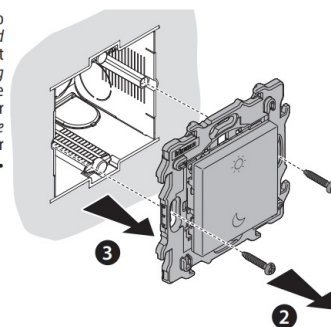
- A muro
- On the wall
- Mural
- Wandmontage
- Mural
- Aan de wand
- Na parede
- على الجدار



- Con adesivo riposizionabile
- With removable sticker
- Avec adhésif repositionnable
- Mit wiederpositionierbare Klebestreifen
- Con adhesivo reposicionable
- Met verplaatsbare sticker
- Com adesivo reposicionável
- مع لاصق قابل لإعادة الوضع



- Ad incasso
- Flush mounted
- À encastrément
- UP-Ausführung
- Versión de empotrar
- Inbouwinstallatie
- Versão a encaixar
- إصدار مدمج



## Technical features



+ 45 °C

+ 5 °C

- Technology Radio (Wireless meshed network)
- Power level <100mW
- Band frequency from 2,4 to 2,4835 GHz

### Warnings and consumer rights



Read carefully before use and keep for future reference.



Touching the units with wet hands is forbidden.

Using liquid cleaners or aerosols is forbidden.

Blocking the ventilation openings is forbidden.

Modifying the devices is forbidden.

Removing protective parts from the devices is forbidden.

Exposing the unit to water drops or splashes is forbidden.

Installing the units near heat/cold sources is forbidden.

Installing the units near harmful gases and powders is forbidden.

Fastening the units on unsuitable surfaces is forbidden.



Danger of electrical shock.



Risk of devices falling because the surface on which they are installed collapses or inappropriate installation.

Switch the power supply OFF before any work on the system.

Remote operation may cause damage to people or property.



Caution: Installation, configuration, starting-up and maintenance must be performed exclusively by qualified personnel.

Check that the wall installation has been carried out correctly according to the installation instructions.

Check that the unit installation complies with the standards in force.

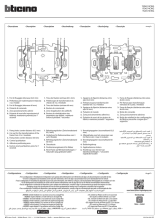
Connect the power supply wires as indicated.

Use only the items indicated in the technical specifications for any system expansions.

Hereby, BTicino S.p.A., declares that the radio equipment type WakeUp/Sleep wireless switch item YW/YD/YG4574CWG is in compliance with Directive 2014/53/EU. The full text of the EU Declaration of Conformity is available at the following internet address: [www.legrand.com/ecatalogue](http://www.legrand.com/ecatalogue)

BTicino SpA – Viale Borri, 231 – 21100 Varese – Italy – [www.bticino.com](http://www.bticino.com)

## Documents / Resources

	<p><a href="#">bticino YW4574CWG Series Wireless Wake Up Sleep Scenario Controls</a> [pdf] Installation Guide</p> <p>YW4574CWG, YD4574CWG, YG4574CWG, YW4574CWG Series Wireless Wake Up Sleep Scenario Controls, YW4574CWG Series, Wireless Wake Up Sleep Scenario Controls, Up Sleep Scenario Controls, Sleep Scenario Controls, Scenario Controls, Controls</p>
---	---

## References

- [Home - HS](#)
- [Legrand E-catalog International | Electrical Ranges of products & Connected Solutions](#)
- [User Manual](#)

[Manuals+](#), [Privacy Policy](#)

This website is an independent publication and is neither affiliated with nor endorsed by any of the trademark owners. The "Bluetooth®" word mark and logos are registered trademarks owned by Bluetooth SIG, Inc. The "Wi-Fi®" word mark and logos are registered trademarks owned by the Wi-Fi Alliance. Any use of these marks on this website does not imply any affiliation with or endorsement.