

bticino
YW4574CW
Series Wireless
Wake Up Sleep
Scenario
Controls



bticino YW4574CW Series Wireless Wake Up Sleep Scenario Controls Installation Guide

[Home](#) » [bticino](#) » bticino YW4574CW Series Wireless Wake Up Sleep Scenario Controls Installation Guide 

Contents

- [1 bticino YW4574CW Series Wireless Wake Up Sleep Scenario Controls](#)
- [2 Product Specifications](#)
- [3 Product Usage Instructions](#)
- [4 Frequently Asked Questions \(FAQ\)](#)
- [5 Description](#)
- [6 Configuration](#)
- [7 Mounting](#)
- [8 Disassembling](#)
- [9 Battery replacement](#)
- [10 Technical features](#)
- [11 Documents / Resources](#)
 - [11.1 References](#)
- [12 Related Posts](#)

bticino

bticino YW4574CW Series Wireless Wake Up Sleep Scenario Controls



Product Specifications

- **Model:** YW4574CW
- **Power:** 18W
- **MAC Address:** 00:04:74:00:00:7A:8A:F8
- **Wireless Network:** Radio (Wireless Mesh)

Product Usage Instructions

Installation

1. Identify the fixing holes with center distances of 83.5mm and 60mm.
2. Use the cut-out for transforming the frame from 3 to 2 modules if needed.
3. Mount the device using the fixing holes.

Operation

Once installed, follow these steps to operate the product:

1. Press the control pushbutton to activate the device.
2. Observe the notification LED for status indications.
3. To reset to factory settings, press and hold the factory reset pushbutton until the red LED turns on.

Maintenance

For maintenance purposes:

- Keep the adhesive positioning area clean for repositioning stickers if needed.
- If repositioning stickers, ensure to remove any existing ones using the provided tab or tools.

Frequently Asked Questions (FAQ)

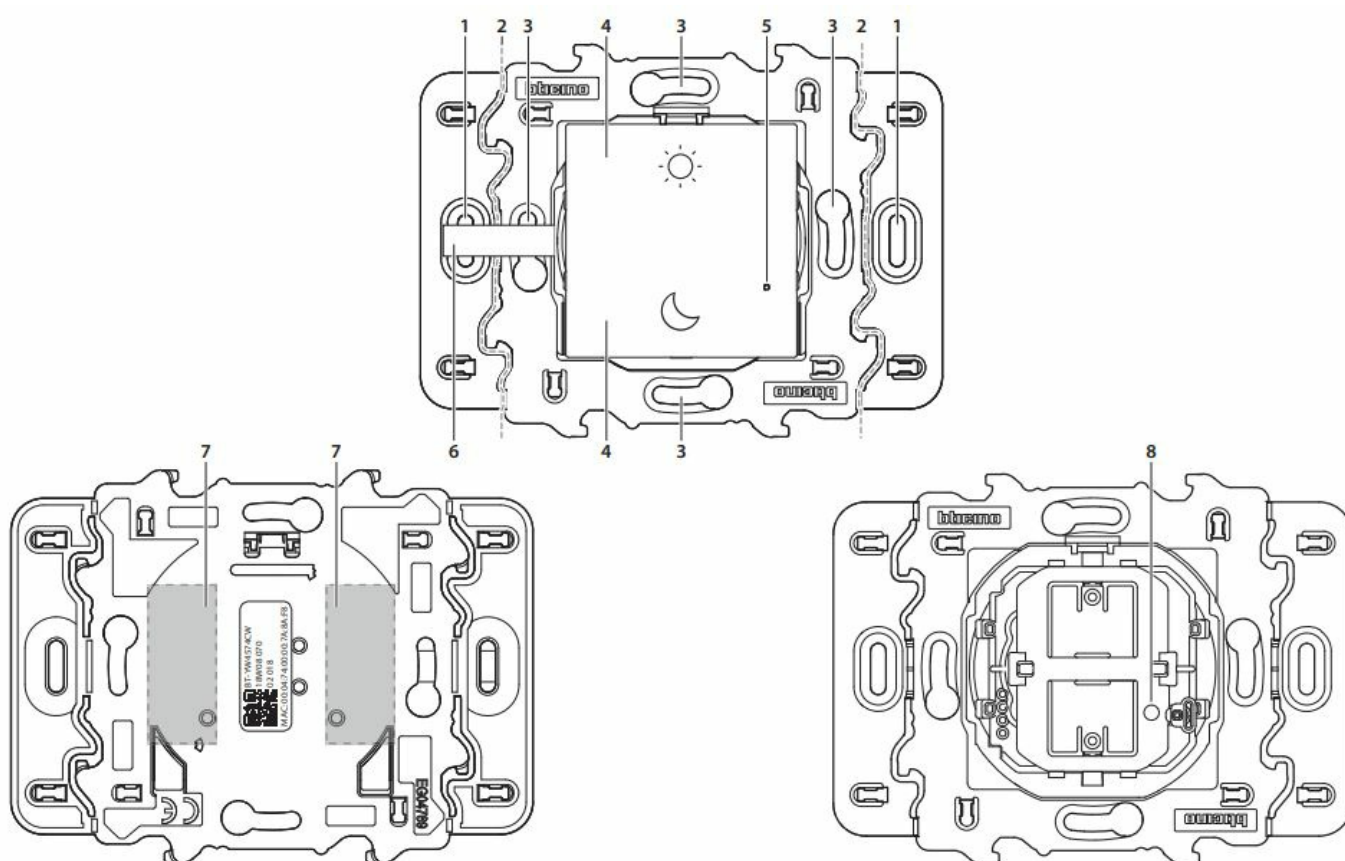
- **How do I reset the device to factory settings?**

Press and hold the factory reset pushbutton until the red LED turns on.

- **What is the wireless network type supported by the device?**

The device supports a Radio (Wireless Mesh) network.

Description



1. Fixing holes (centre distance 83.5 mm)
2. Cut-out for the transformation of the frame from 3 to 2 modules
3. Fixing holes (centre distance 60 mm)
4. Control pushbutton
5. Notification LED
6. Tab to be removed
7. Adhesive positioning area
8. Factory reset pushbutton: press and hold down until the red LED turns on

Configuration

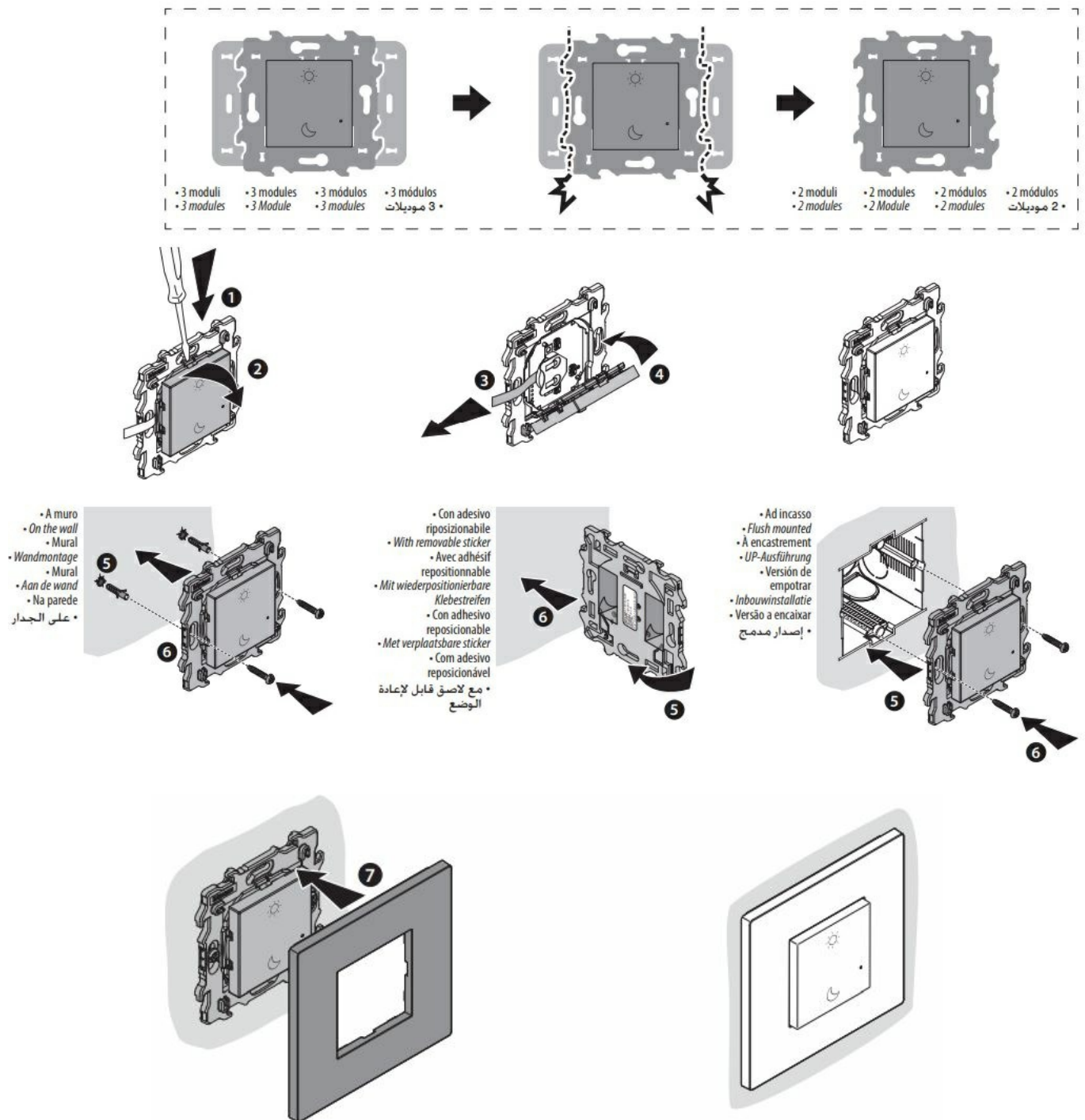
- For device configuration and installation and for any other information, refer to the App or documentation that can be downloaded from the website: www.homesystems-legrandgroup.com



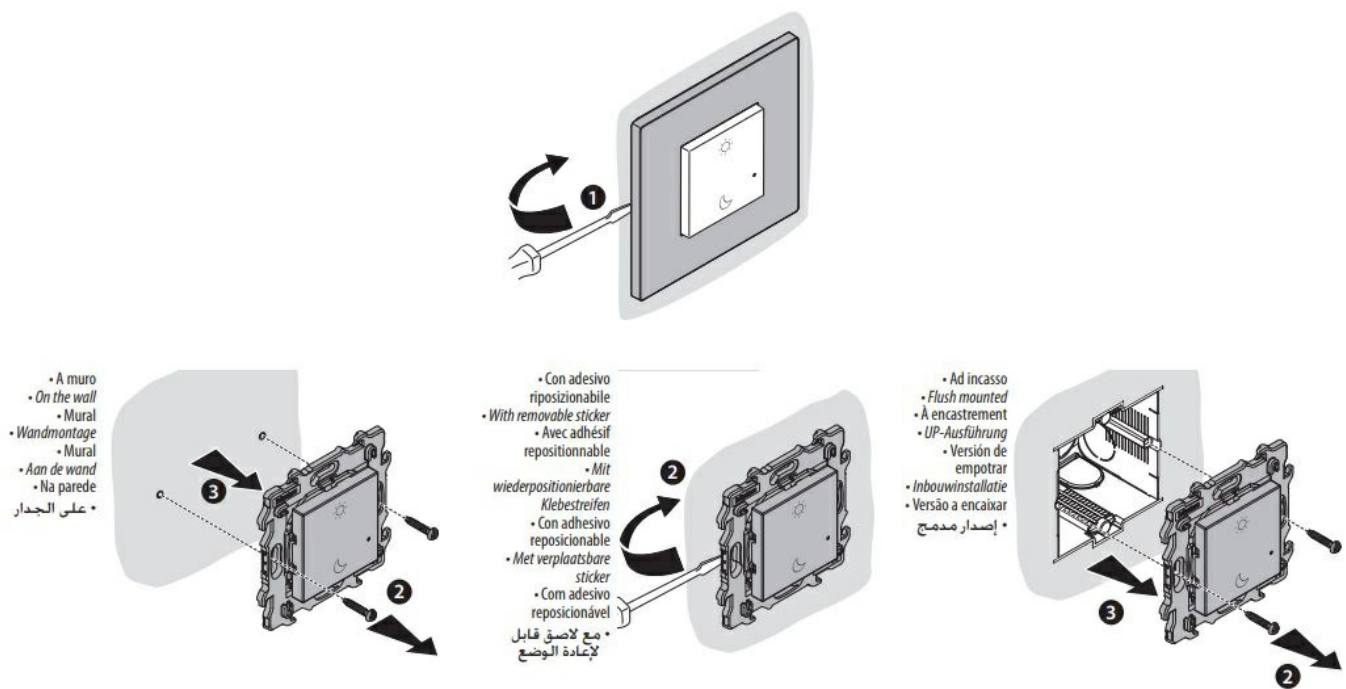
- **ANDROID:** requires Android 5.0 or later with access to Google Play

- **iOS:** requires an iPhone with iOS 12,0 or later

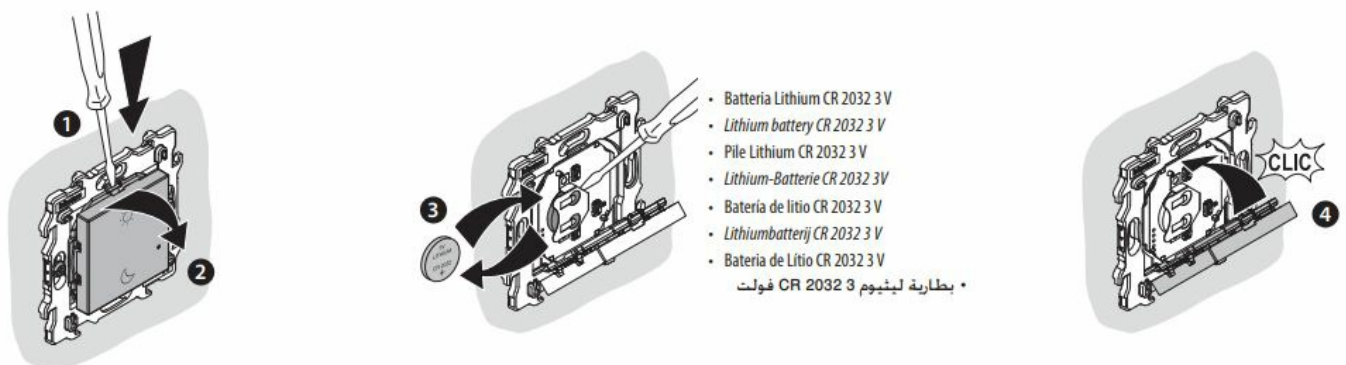
Mounting



Disassembling



Battery replacement



Flat batteries must be disposed of respecting the laws in force.

Technical features

- **Technology Radio** (Wireless meshed network)
- **Power level** <100mW
- **Band frequency** from 2,4 to 2,4835 GHz

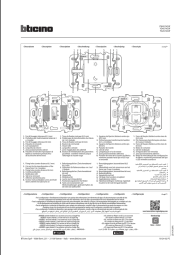
Warnings and consumer rights

- Read carefully before use and keep for future reference.
- Touching the units with wet hands is forbidden.
- Using liquid cleaners or aerosols is forbidden.
- Blocking the ventilation openings is forbidden.
- Modifying the devices is forbidden.
- Removing protective parts from the devices is forbidden.
- Exposing the unit to water drops or splashes is forbidden.
- Installing the units near heat/cold sources is forbidden.

- Installing the units near harmful gases and powders is forbidden.
- Fastening the units on unsuitable surfaces is forbidden.
- Danger of electrical shock.
- Risk of devices falling because the surface on which they are installed collapses or inappropriate installation.
- Switch the power supply OFF before any work on the system.
- Remote operation may cause damage to people or property.
- Caution: Installation, configuration, starting-up and maintenance must be performed exclusively by qualified personnel.
- Check that the wall installation has been carried out correctly according to the installation instructions.
- Check that the unit installation complies with the standards in force.
- Connect the power supply wires as indicated.
- Use only the items indicated in the technical specifications for any system expansions.

Hereby, BTicino S.p.A., declares that the radio equipment type WakeUp/Sleep wireless switch item YW/YD/YG4574CW is in compliance with Directive 2014/53/EU. The full text of the EU declaration of conformity is available at the following internet address: www.legrand.com/ecatalogue

Documents / Resources

	<p>bticino YW4574CW Series Wireless Wake Up Sleep Scenario Controls [pdf] Installation Guide</p> <p>YW4574CW, YD4574CW, YG4574CW, YW4574CW Series Wireless Wake Up Sleep Scenario Controls, YW4574CW Series, Wireless Wake Up Sleep Scenario Controls, Wake Up Sleep Scenario Controls, Sleep Scenario Controls, Scenario Controls, Controls</p>
--	--

References

- [🏠 Home - HS](#)
- [🏠 Legrand E-catalog International | Electrical Ranges of products & Connected Solutions](#)
- [User Manual](#)

[Manuals+](#), [Privacy Policy](#)

This website is an independent publication and is neither affiliated with nor endorsed by any of the trademark owners. The "Bluetooth®" word mark and logos are registered trademarks owned by Bluetooth SIG, Inc. The "Wi-Fi®" word mark and logos are registered trademarks owned by the Wi-Fi Alliance. Any use of these marks on this website does not imply any affiliation with or endorsement.