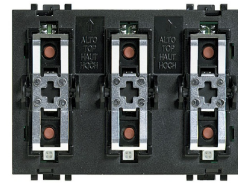


bticino

Y4652M3 Control
Device With Key Covers



bticino Y4652M3 Control Device With Key Covers Instruction Manual

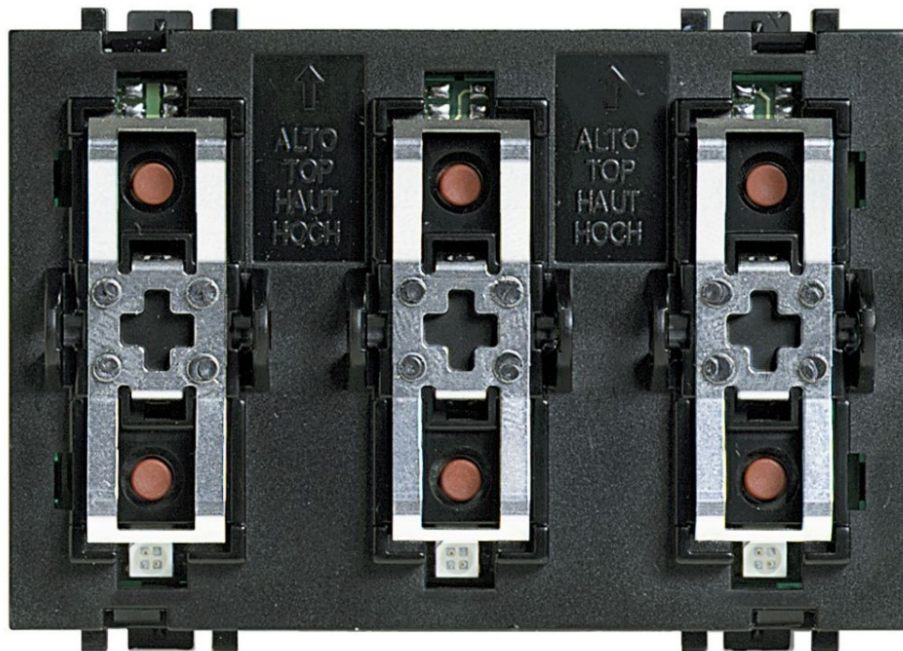
[Home](#) » [bticino](#) » bticino Y4652M3 Control Device With Key Covers Instruction Manual 

Contents

- [1 bticino Y4652M3 Control Device With Key Covers](#)
- [2 Description](#)
- [3 Configuration](#)
- [4 Montage](#)
- [5 Technical data](#)
- [6 Warnings and consumer rights](#)
- [7 Documents / Resources](#)
 - [7.1 References](#)

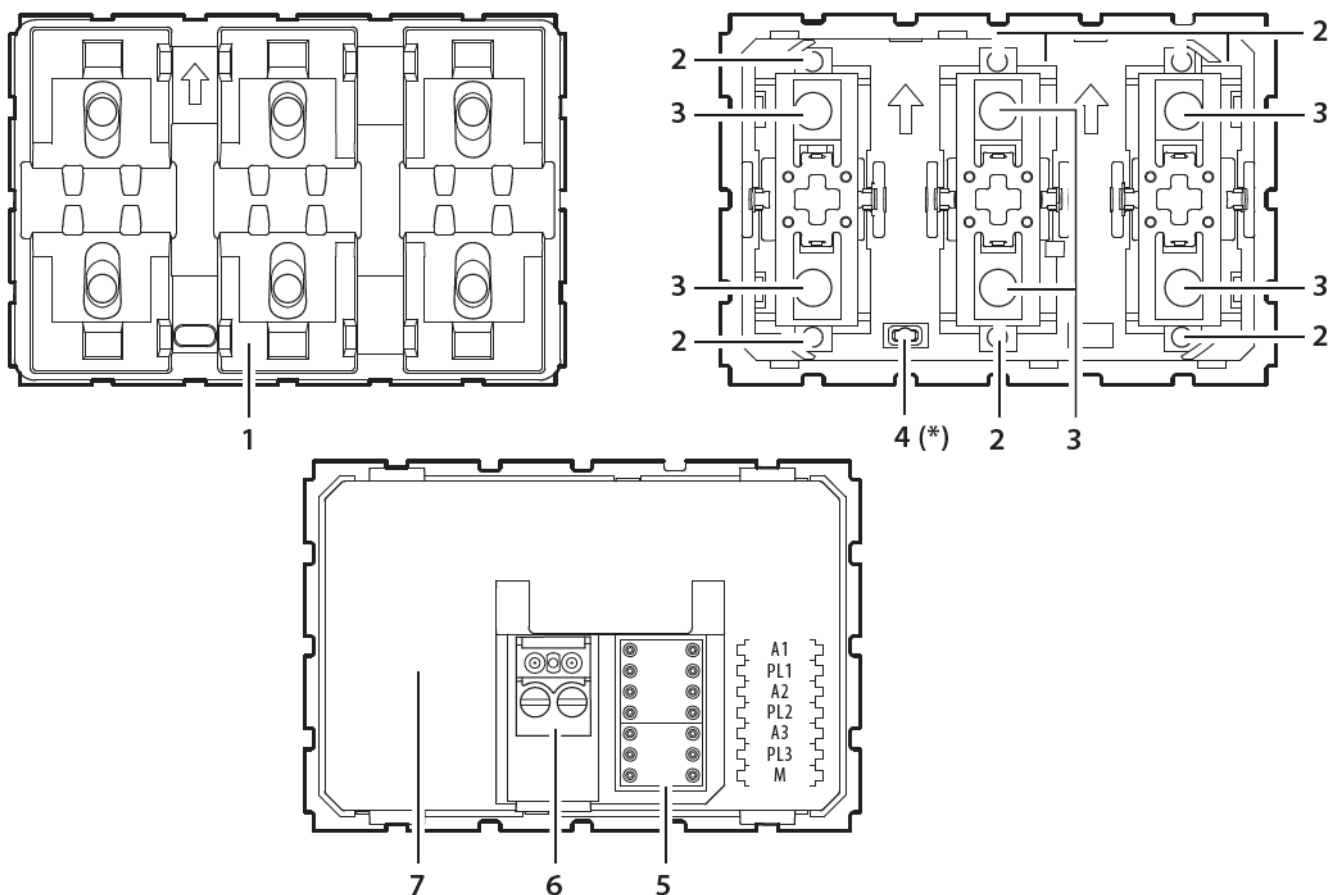
bticino

bticino Y4652M3 Control Device With Key Covers

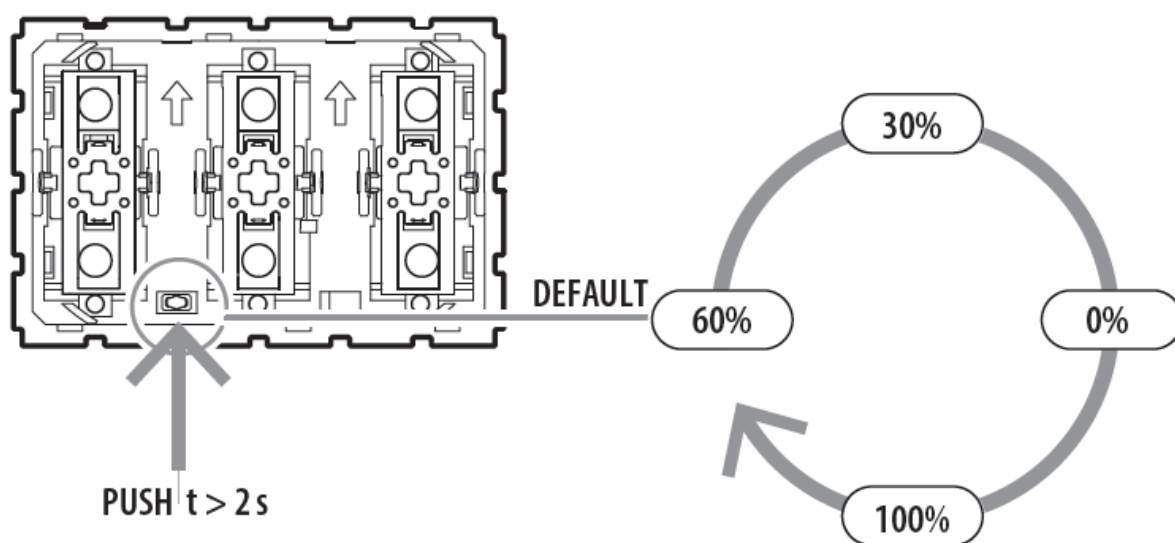


Description

1. Protective shell
2. Status notification LED
 - Blue steady: load ON
 - White steady: load OFF
 - Blue flashing: object not configured
3. Control pushbutton
4. LED pushbutton *
5. Configurator socket
6. BUS clamp
7. Safety and sealing clear cap
 - Caution:** do not delete



(*)



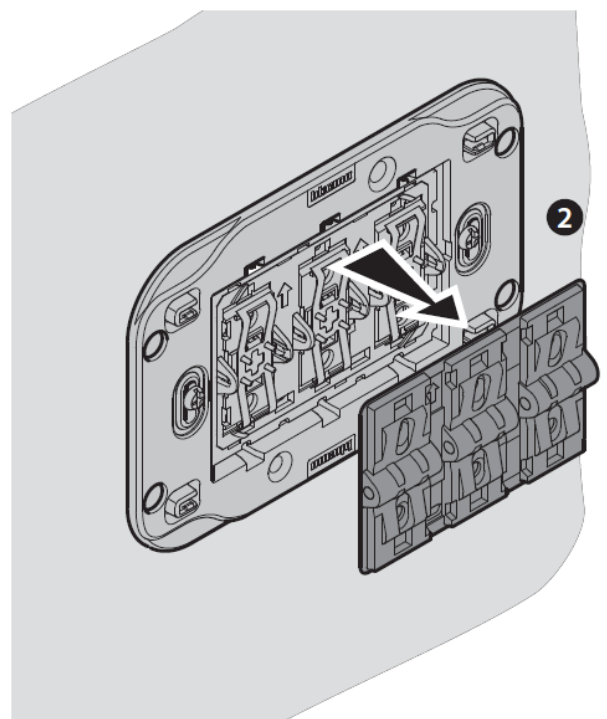
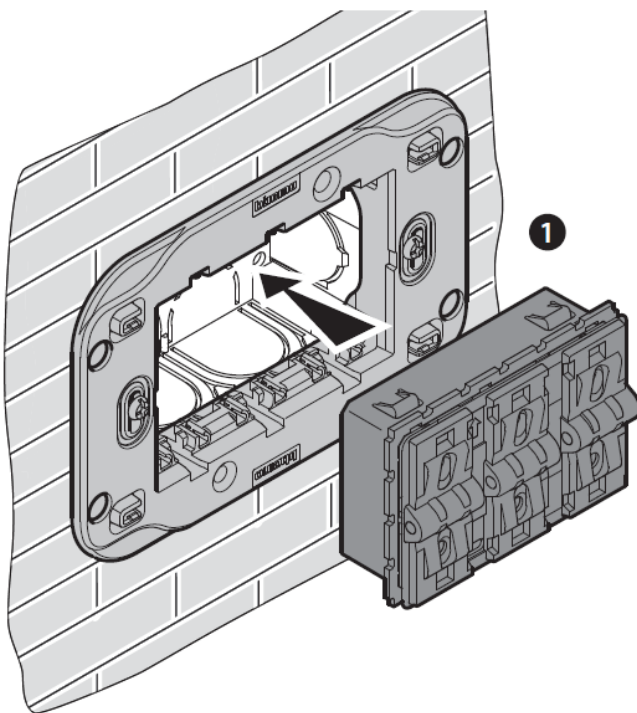
Configuration

For device configuration and installation and for any other information, refer to the App or documentation that can be downloaded from the website: www.homesystems-legrandgroup.com

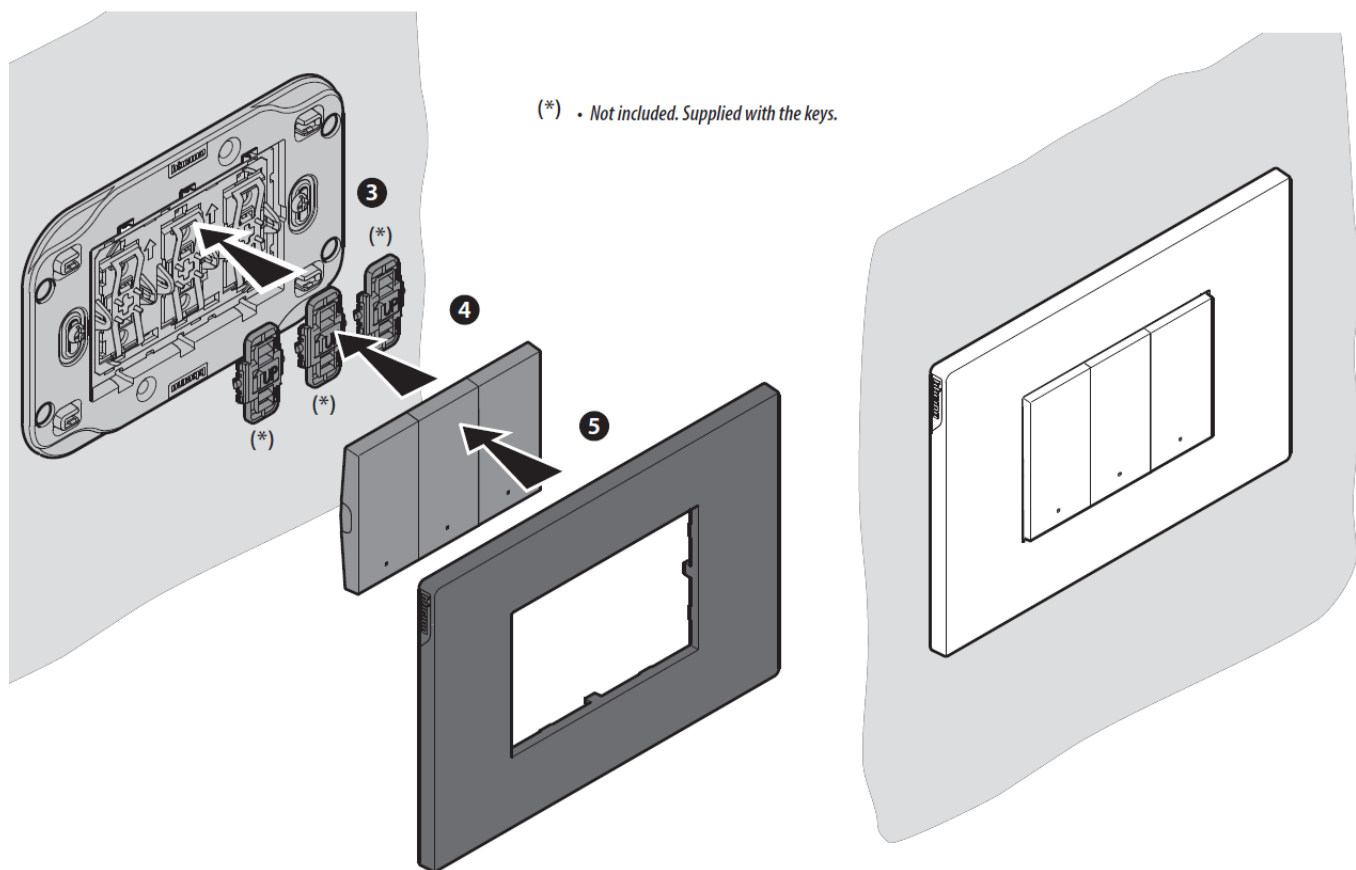


- ANDROID: requires Android 5.0 or later with access to Google Play
- iOS: requires an iPhone with iOS 12,0 or later

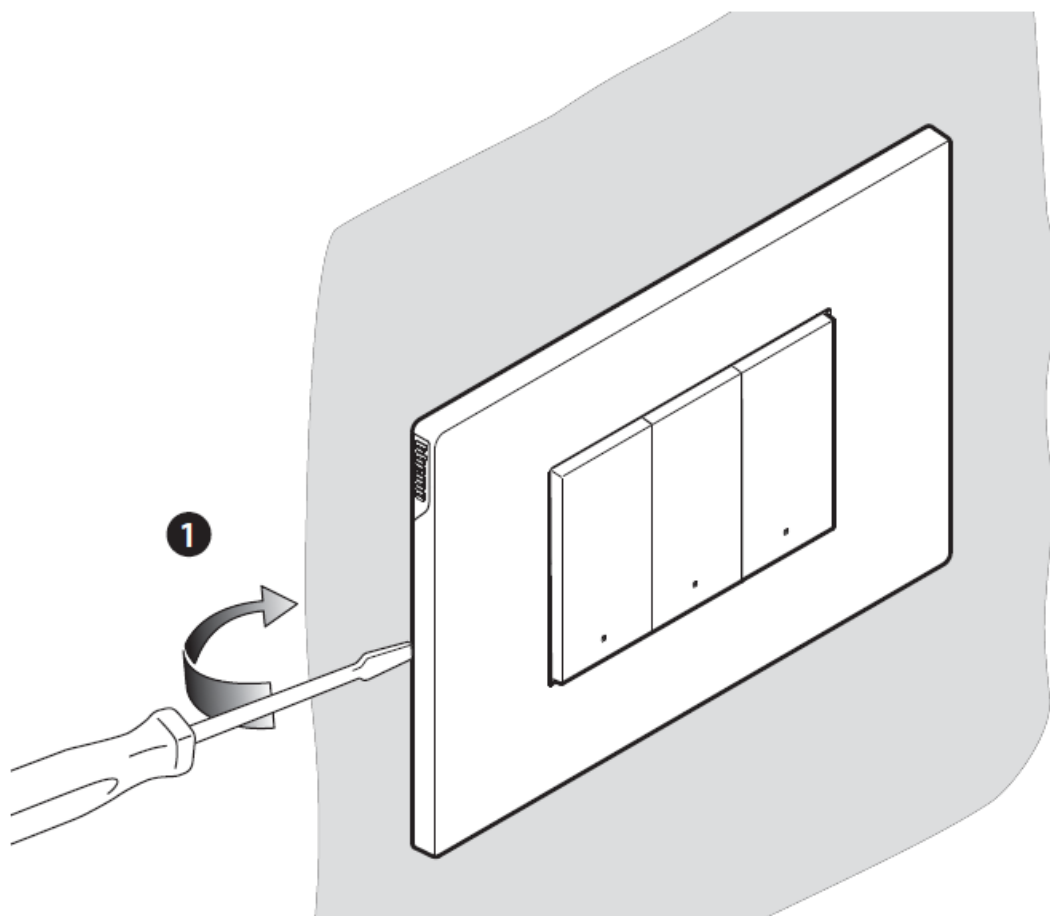
Montage

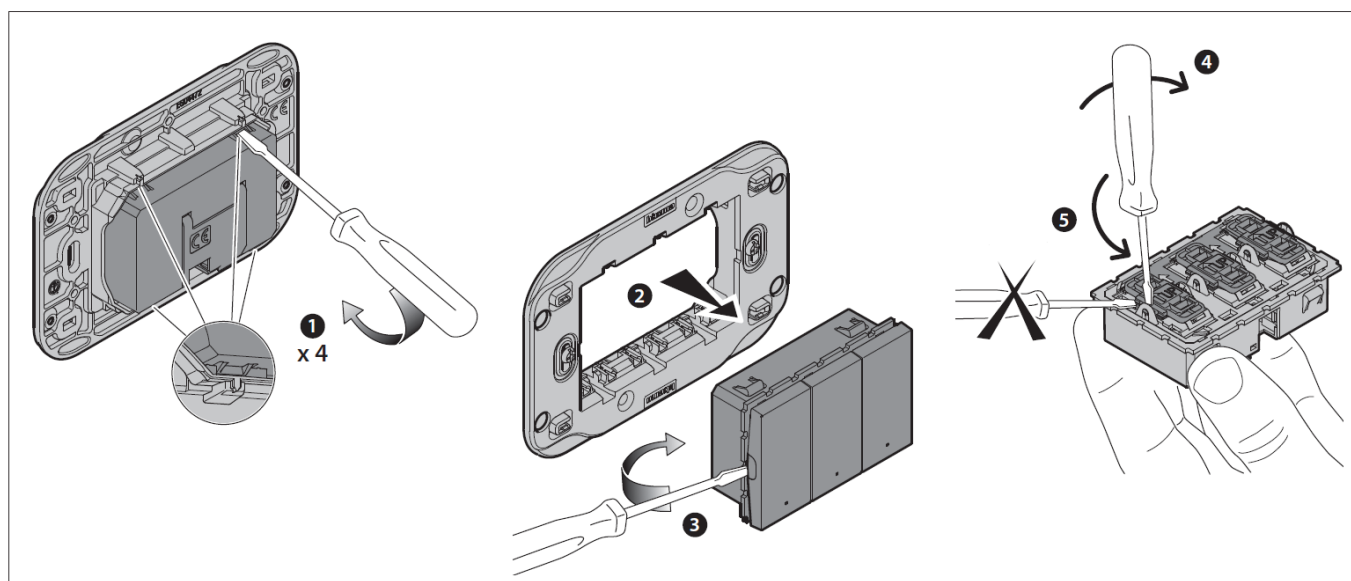
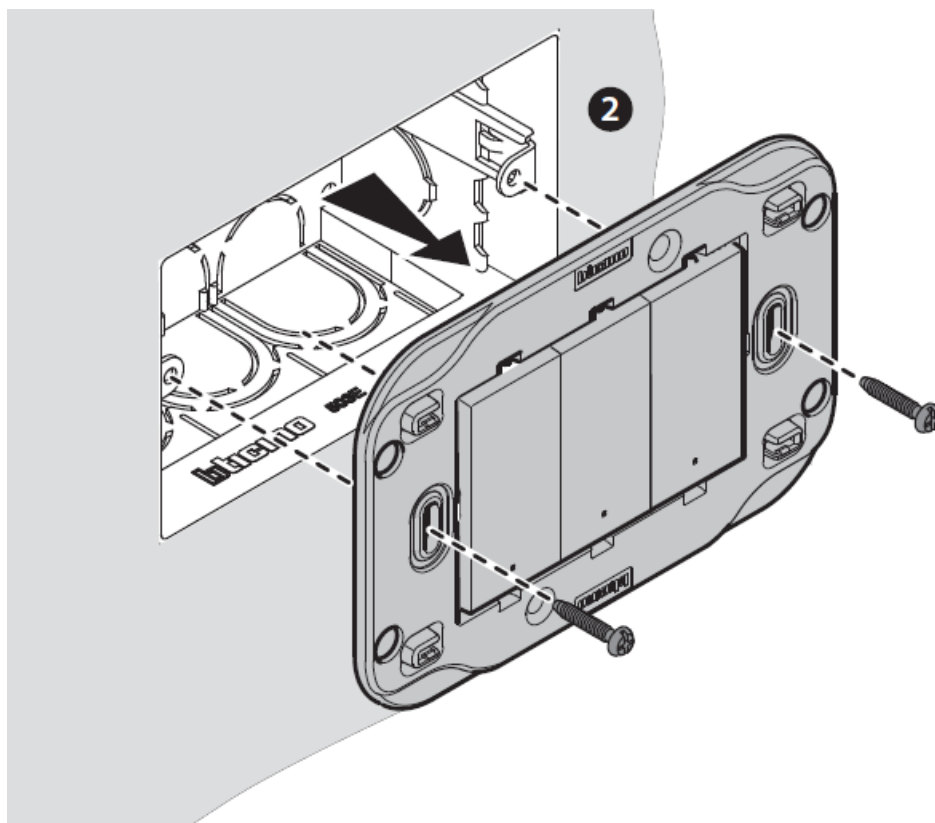


Caution: leave the protective shell on until the keys are mounted.



Disassembling





Technical data

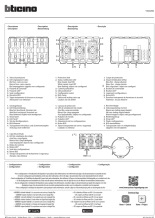
Power supply from SCS Bus	18 – 27 Vdc
Standby absorption	6 mA
Max. absorption	7 mA
Operating temperature	0 – 40 °C

Warnings and consumer rights

- Read carefully before use and keep for future reference.
- Touching the units with wet hands is forbidden.

- Using liquid cleaners or aerosols is forbidden.
- Blocking the ventilation openings is forbidden.
- Modifying the devices is forbidden.
- Removing protective parts from the devices is forbidden.
- Exposing the unit to water drops or splashes is x.
- Installing the units near heat/cold sources is forbidden.
- Installing the units near harmful gases and powders is forbidden.
- Fastening the units on unsuitable surfaces is forbidden.
- Danger of electrical shock.
- Risk of devices falling because the surface on which they are installed collapses or inappropriate installation.
- Switch the power supply OFF before any work on the system.
- Remote operation may cause damage to people or property.
- **Caution:** Installation, configuration, starting-up and maintenance must be performed exclusively by qualified personnel.
- Check that the wall installation has been carried out correctly according to the installation instructions.
- Check that the unit installation complies with the standards in force.
- Connect the power supply wires as indicated.
- Use only the items indicated in the technical specifications for any system expansions.

Documents / Resources

	<p>bticino Y4652M3 Control Device With Key Covers [pdf] Instruction Manual Y4652M3 Control Device With Key Covers, Y4652M3, Control Device With Key Covers, Device With Key Covers, With Key Covers, Key Covers</p>
---	---

References

- [🏠 Home - HS](#)
- [User Manual](#)

[Manuals+](#), [Privacy Policy](#)

This website is an independent publication and is neither affiliated with nor endorsed by any of the trademark owners. The "Bluetooth®" word mark and logos are registered trademarks owned by Bluetooth SIG, Inc. The "Wi-Fi®" word mark and logos are registered trademarks owned by the Wi-Fi Alliance. Any use of these marks on this website does not imply any affiliation with or endorsement.