



BTF-LIGHTING WB5 WiFi 5-in-1 Smart LED Strip Controller Instruction Manual

[Home](#) » [BTF-LIGHTING](#) » **BTF-LIGHTING WB5 WiFi 5-in-1 Smart LED Strip Controller Instruction Manual**

BTF-LIGHTING WB5 WiFi 5-in-1 Smart LED Strip Controller Instruction Manual



Please read the instructions carefully before using the controller.

Contents [[hide](#)

- [1 Features](#)
- [2 Parameters](#)
- [3 Connect to LED strip](#)
- [4 Intelligent control](#)
- [5 APP Control](#)
- [6 Documents / Resources](#)
- [7 Related Posts](#)

Features

The controller is adopted by the most advanced PWM control technology, and has memory function (The light status will keep same as the status before you turn off the light) ; Wireless and 4G controlled by Tuya Smart Life APP.



16 Millions of colors to choose



WiFi wireless control



Color temperature
2700K~6500K



Smartphone APP control



Dim brightness / saturation



Support third party voice control



Support music rhythm



Device sharing



Support scene customization



Group control



Timing setting / countdown
turn on / off LED light



Auto-transmitting & Synchronization



Bluetooth wireless control



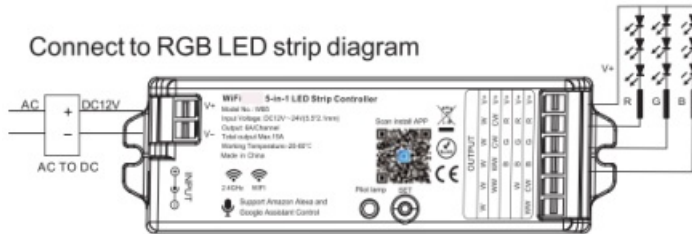
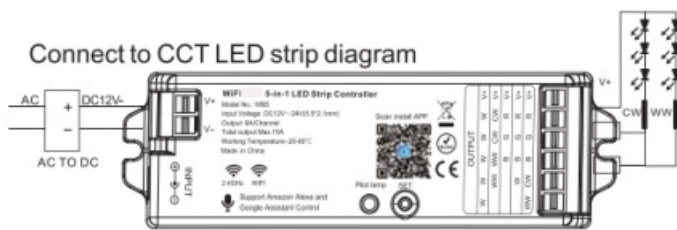
Tap-to-Run & automation



Free screw when
connecting to LED strip



Link/Unlink/Reset
Button on the
controller



Parameters

Model No.: WB5

Input Voltage: DC12V-24V (5. 5*2. 1mm)

Output: 6A/Channel (Total Output Max. 15A)

Working Temperature: -20-60°C

Communication Mode: WiFi-IEEE 802. 11 b/g/n 2. 4GHz

RF: 2. 4GHz Weight: 65g



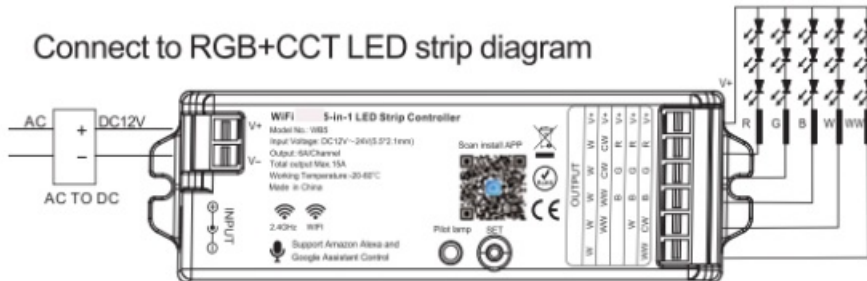
Smart Link&Unlink: We have 3 methods to Link and Unlink to APP.

1. Long press "SET" 3 seconds,the purple will blink 3 times,the device go into Smart Link/Unlink mode.
2. Switch ON and OFF 3 times(ON-OFF-ON-OFF-ON) within 10 seconds,the purple light will blink 3 time, the device go into Smart Link and Unlink Mode.

Note: Pilot lamp red light always ON means device not link to APP, need to do above steps to link. green light always ON means device linked to APP;device is controllable.

Switching Output Mode: Short press "SET" button to switch the output mode; The indicating lamp flickering means switching successfully; Different colors flickering correspond to different output mode; Details see below sheet.

| | | | | |
|------------------------|-------------------------|----------------------|------------------------|-----------------------------|
| White Light Flickering | Yellow Light Flickering | Red Light Flickering | Green Light Flickering | Blue Light Flickering |
| Single Color Mode | Dual White Mode | RGB Mode | RGBW Mode | RGB+CCT Mode (Default Mode) |



Switching Bluetooth control steps:

1. Complete the network distribution of the equipment.
2. Power off the router used for network configuration, turn off WiFi on the mobile phone, turn on Bluetooth, and wait for about 3-5 minutes to control.

Suggestion: Complete the network distribution of the equipment first, then adjust the output mode Pilot lamp.

Indicating light instruction:

| | | | |
|---------------------------|-------------------------|------------------------|---|
| Red light always-on | Green light always-on | Red light blinking | Blue light always-on |
| Disconnected from network | Networking successfully | Waiting for smart link | WiFi router disconnected but still controllable |

Connect to LED strip



Controller input voltage must be in accordance with the required voltage of LED Strips.
Input voltage=Output Voltage



Tuya Smart Life APP wifi Control Instruction:

Download and install [Tuya Smart] APP or [Smart Life] APP

Search for [Smart Life] in Apple or Google store or scan following QR code to download and install the app.

Please click " Register" button to create account while using it in the first time. Log in directly if you already had account.

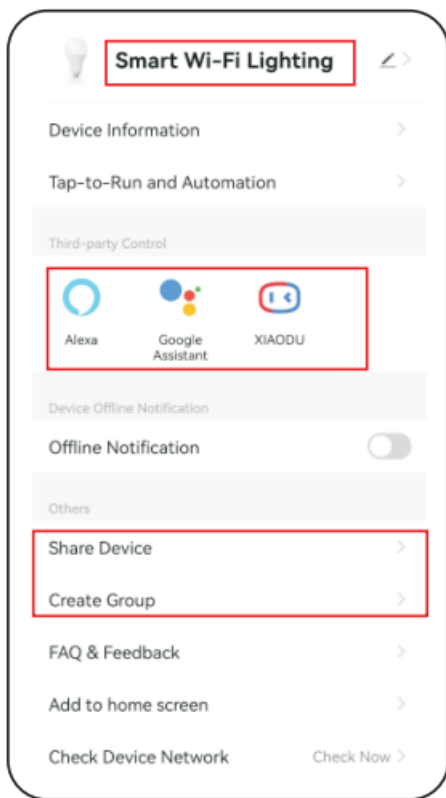


Connect to Smartphone

1. Connect controller with power supply.
2. Confirm Pilot lamp is flashing quickly (2 flashes per second) If Pilot lamp isn't in fast flashing state. there are two ways to enter:
 - Long press " SET " key until Pilot lamp flashing quickly.
 - Power OFF and ON once, long press Zone ON button of linked remote until the LED strip blinking 3 times.(available remote model: LM091)
3. Connect phone with home WiFi network in the 2.4GHz frequency.
4. Open homepage of APP and click "+" button at the upper right corner of page.If the pilot lamp is flashing red, it will find the new device automatically.

Device name editing, third-party control, device sharing Thoup control.

1. Click' " on the upper right corner of control page to enter edit page, where you can modify device name, icon, etc.
2. Click icon under third-party control to view detailed description of third-party control.
3. Click Share Device to share device with family and friends.
4. Click' Create Group "and follow APP prompt after setting is completed. the device can be controlled by group.

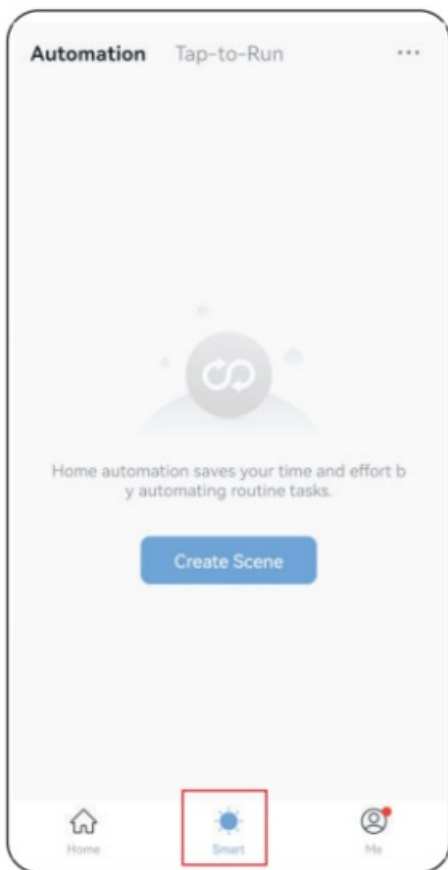


5. Added devices will be displayed on home page after network configuration is successful.
6. Click device you want to control to enter the control interface.



Intelligent control

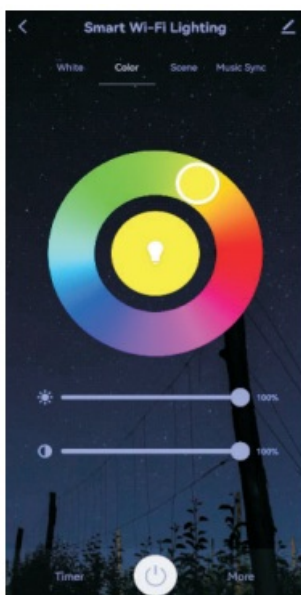
1. Click Smart " at the bottom.
2. Click + in the upper right corner to create intelligent control.



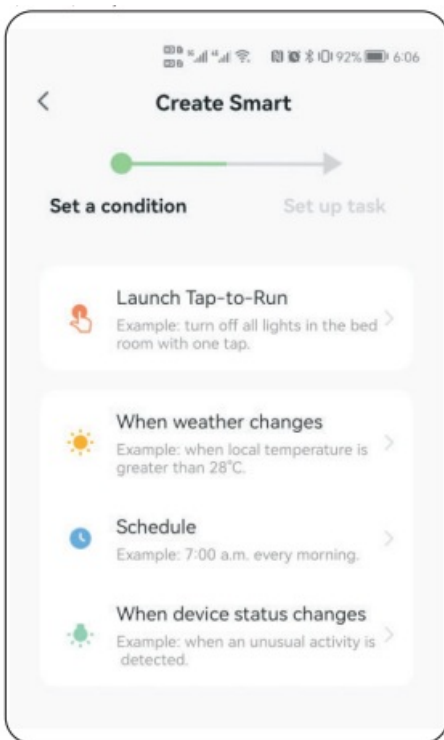
APP Control

1. Click "device" or "group" you want to control on homepage to enter control page, where you can control color, saturation, brightness, color temperature, and scene.
2. Click music sync to enter music rhythm mode, light will change with rhythm of music.

Note: Music rhythm mode requires phone keep on this page



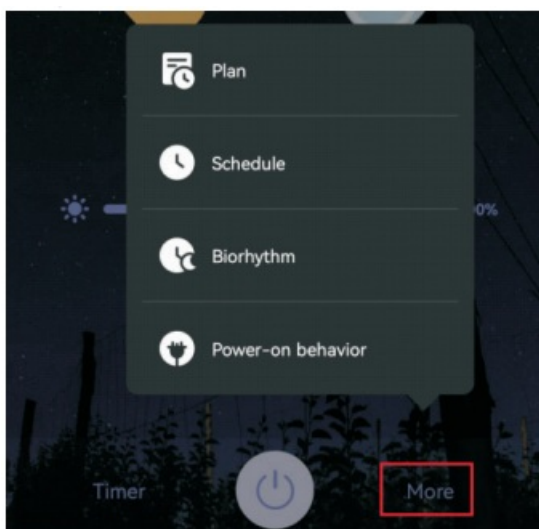
3. In the page of creating smart. you can set command to be executed under the specified conditions (such as: turn on or turn off light, color, brightness, mode, etc.)



4. Click More on the right bottom, you can choose more settings, including Plan, Schedule, Biorhythm and Power-on behavior.

Detailed setting, please read the below links: [https://developer.tuya.com/en/docs/iot/product-panel-configuration?id=](https://developer.tuya.com/en/docs/iot/product-panel-configuration?id=K9s9rhj4i7z8b#title-11)

K9s9rhj4i7z8b#title-11-



Attention

1. Please check whether the input voltage of the constant voltage power supply is in accordance with the controller, and please check the connection of both the cathode and anode.
2. The working Voltage is DC 12~24V, the controller will be broken if the voltage is higher than 24V.
3. Non-professional user cannot dismantle the controller directly, otherwise, it may cause fire and electric shock.
4. The working temperature is -20~60°C ; Do not use the device to direct sunlight, moist and other high temperature area.
5. Please do not use controller around the mental area and high magnetic field, otherwise, it will badly affect the

control distance.

6. When the device load to 15A, wire diameter must be over 1.5mm'



Controller can not
use in humid area



Made in China

This device complies with Part 15 of the FCC Rules. Operation is subject to the following two conditions: (1) this device may not cause harmful interference, and (2) this device must accept any interference received, including interference that may cause undesired operation

NOTE: This equipment has been tested and found to comply with the limits for a Class B digital device, pursuant to Part 15 of the FCC Rules. These limits are designed to provide reasonable protection against harmful interference in a residential installation. This equipment generates, uses and can radiate radio frequency energy and, if not installed and used in accordance with the instructions, may cause harmful interference to radio communications. However, there is no guarantee that interference will not occur in a particular installation.

If this equipment does cause harmful interference to radio or television reception, which can be determined by turning the equipment off and on, the user is encouraged to try to correct the interference by one or more of the following measures:

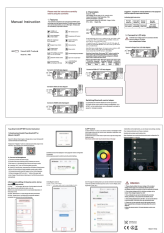
- Reorient or relocate the receiving antenna.
- Increase the separation between the equipment and receiver.
- Connect the equipment into an outlet on a circuit different from that to which the receiver is connected.
- Consult the dealer or an experienced radio/TV technician for help.

Warning: changes or modifications not expressly approved by the party responsible for compliance could void the user's authority to operate the equipment.

Radiation Exposure Statement

This equipment complies with FCC radiation exposure limits set forth for an uncontrolled environment. This equipment should be installed and operated with minimum distance 20cm between the radiator and your body.

Documents / Resources

| | |
|---|--|
|  | <p>BTF-LIGHTING WB5 WiFi 5-in-1 Smart LED Strip Controller [pdf] Instruction Manual WB5, 2A5UL-WB5, 2A5ULWB5, WB5 WiFi 5-in-1 Smart LED Strip Controller, WiFi 5-in-1 Smart LED Strip Controller</p> |
|---|--|

