



## BRYSTON BDP WiFi Adapter Owner's Manual

[Home](#) » [BRYSTON](#) » **BRYSTON BDP WiFi Adapter Owner's Manual** 



### **BDP WiFi Adapter** Owner's Manual

Thank you for purchasing a Bryston BDP Wifi Adapter. This adapter is compatible with all hardware versions of the BDP when they are running firmware version S2.36 or greater.

The adapter is compatible with most wifi networks based on the 802.11n standard. Naturally, performance and speed are largely dependent on distance from the wifi access point and interference from physical obstructions and competing wifi traffic from other nearby devices and networks. The theoretical maximum throughput is 130mbps which is far beyond what is needed to stream high resolution audio from an NAS or TIDAL.

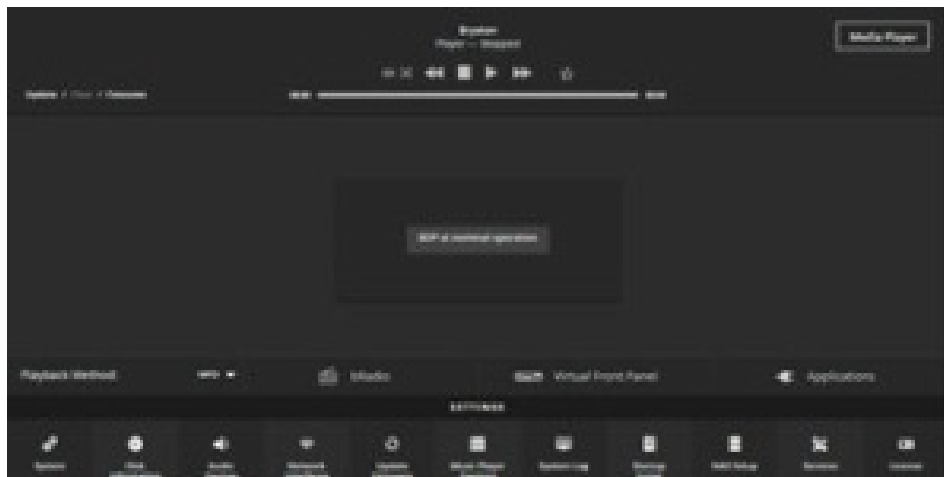
The adapter kit includes a short USB extension cable which allows some flexibility in placing the wifi adapter in order to obtain the best wifi reception. If you experience audio dropouts or difficulty controlling the BDP from your network connected device, experiment with using the extension cable and placing the adapter away from your audio equipment to try and get better signal.

To install the wifi adapter, simply remove the white protective cap, and insert the adapter into any free USB port on your BDP. Disconnect any other network cable. Reboot the BDP and follow the instructions on the reverse side of this page.

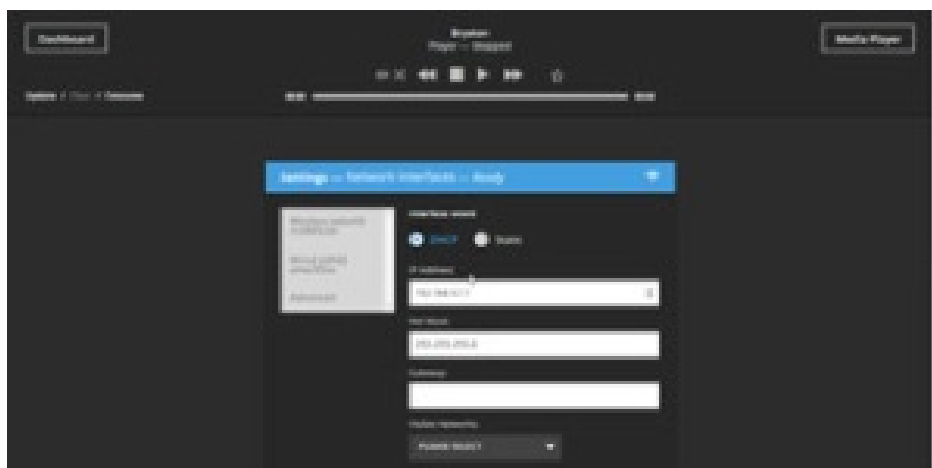
Questions or requests for help can be directed to our service department at <http://bryston.com/pages/contact.html> or by phone **+1-705-742-5325**



1. Connect your Bryston Wifi Dongle to any free USB port on your BDP. Reboot the BDP. The BDP will create its own wireless network called Bryston Digital Player. Connect to that network with the password bryston1 . Once connected, a web browser will automatically open with the Dashboard of your BDP.



2. Click or tap on "Network Interfaces" in the settings area. Then select "Wireless (wlan0)". Using the Visible Networks menu, select your desired network, or if your network has a hidden name, enter the BSSID.



3. Choose the security type associated with the network, and enter your password. Click or tap the Apply button. Your BDP will save the settings and join the new network. Depending on which model BDP you have, this will take between 30 and 120 seconds.

IP Address:

Subnet Mask:

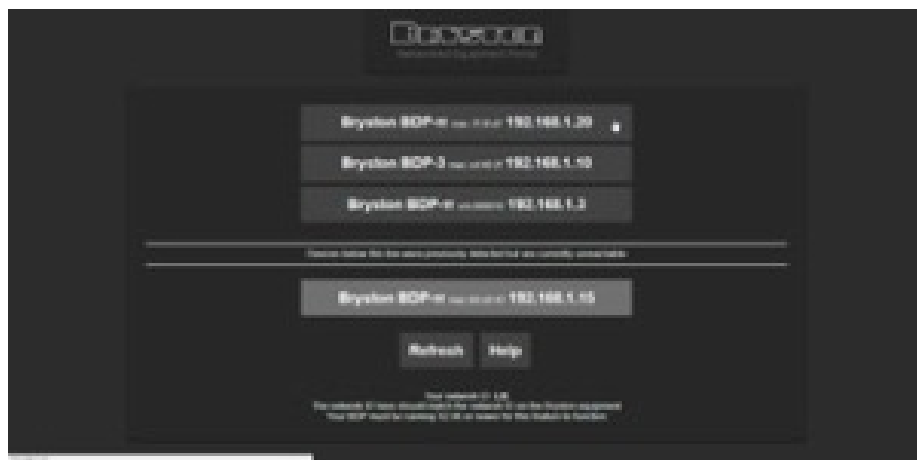
Gateway:

Static IP address:

DNS:

Save


- If your device (computer, tablet, mobile) does not automatically rejoin the network you configured the BDP to connect to, instruct it to do so. Then, from a web browser, navigate to <http://my.bryston.com>. Click your BDP, and use as normal.



## Contents

- 1 Documents / Resources
- 2 Related Posts

## Documents / Resources

	<p><b><a href="#">BRYSTON BDP WiFi Adapter</a></b> [pdf] Owner's Manual BDP, WiFi Adapter, BDP WiFi Adapter</p>
---	---