



# BRYDGE BRY801K Bluetooth Wireless keyboard User Manual

[Home](#) » [Brydge](#) » BRYDGE BRY801K Bluetooth Wireless keyboard User Manual 

## Contents

- 1 BRYDGE BRY801K Bluetooth Wireless keyboard
- 2 POWER
- 3 PAIR
- 4 UPDATE FIRMWARE
- 5 ATTACH PROTECTIVE CASE
- 6 INSERT/REMOVE KEYBOARD
- 7 CHARGE
- 8 KEYBOARD SHORTCUTS
- 9 WARRANTY
- 10 Documents / Resources
  - 10.1 References
- 11 Related Posts

B R Y D G E

**BRYDGE BRY801K Bluetooth Wireless keyboard**



**POWER**

- **TO TURN ON:** Press the power key for one second until the LED flashes green.
- **TO TURN OFF:** Press and hold the power key for three seconds until the LED flashes red.



- **NOTE:** To conserve battery, your Brydge will enter sleep mode after 20 minutes of non-use. Press any key to turn back on. Your Brydge will enter sleep mode when both devices are closed like a laptop.

## PAIR

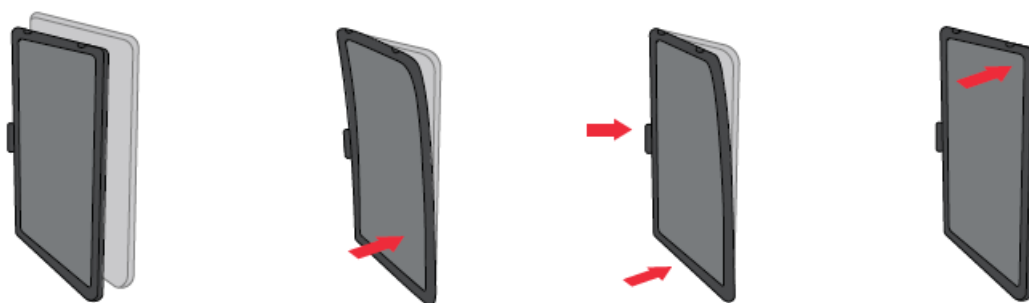
TO PAIR: Press and hold the Bluetooth™ key for three seconds until the LED flashes blue. On your iPad, under Settings > Bluetooth™ select Brydge 10.2 MAX+. When successfully paired, the blue LED will turn off and your keyboard and trackpad will be active.



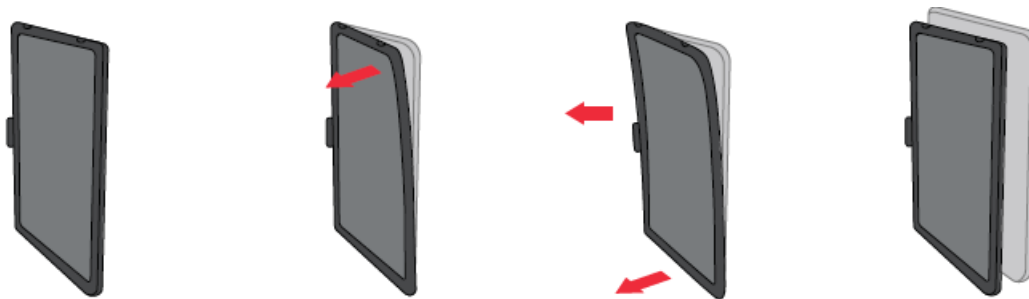
## UPDATE FIRMWARE

Download Brydge Connect from the App Store for the latest firmware updates.

## ATTACH PROTECTIVE CASE

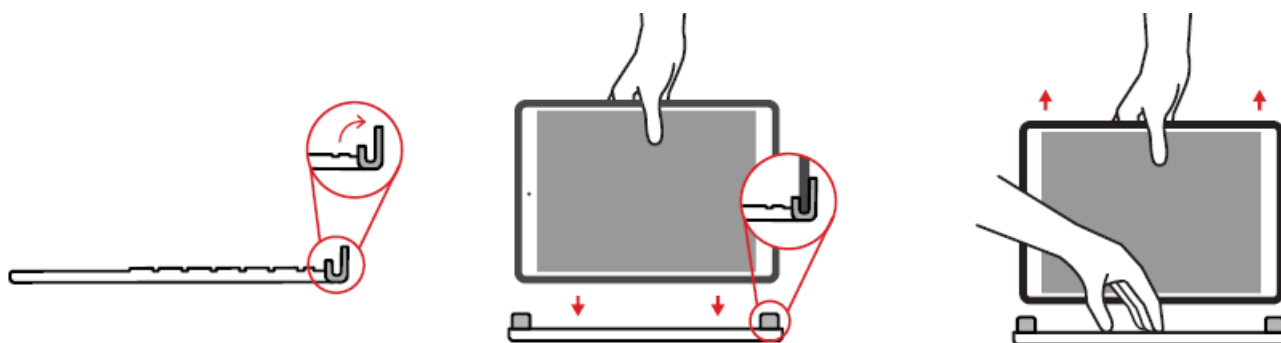


## REMOVE PROTECTIVE CASE



## INSERT/REMOVE KEYBOARD

- **IMPORTANT:** Before attaching your keyboard, ensure your iPad is inserted into the supplied protective case.
- **BEFORE INSERTING:** Place your Brydge on a flat surface and set the hinges upright to 90 degrees.
- **TO INSERT:** Insert your iPad (in protective case) into the hinges with the home button on the left.
- **TO REMOVE:** Place your Brydge on a flat surface. Place your hand towards the back of the keyboard and pull up.



## CHARGE

**TO CHECK BATTERY LIFE:** In Today View, go to the BATTERIES section to check battery life. If not available, swipe left on your Home Screen to show Today View, scroll to the bottom and click edit. Scroll down to Batteries, and click the green '+' icon to add.

**NOTE:** If battery life is below 15%, backlit key functionality will be disabled to conserve battery.

**TO CHARGE:** Insert the charging cable into the keyboard and plug the other end into a power source. A solid red LED indicates the Brydge is charging.

When the keyboard is fully charged, the red LED will turn off. A full charge can take up to three hours.



## KEYBOARD SHORTCUTS

- **Copy:** Command + C
- **Paste:** Command + V

- **Home Screen:** Command + H
- **Switch App:** Command + Tab
- **Cut:** Command + X
- **Show Dock:** Command + Option + D
- **Underline:** Command + U
- **Search:** Command + Space
- **Italic:** Command + I
- **Undo:** Command + Z
- **Switch Language:** Ctrl + Shift + Spacebar (Spacebar allows you to toggle through available languages)

## WARRANTY


Thank you for purchasing a Brydge product. This product comes with a 1-year limited hardware warranty on the terms and conditions set out in this document and at [www.brydge.com/warranty](http://www.brydge.com/warranty). All Brydge warranties are non-transferrable and are only available to the original end-user of the product. Warranties do not apply to products purchased from online vendors unauthorized to sell Brydge-branded product. If a defect arises during the warranty period, cease using the product and contact Brydge. To obtain warranty service, visit [www.brydge.com/support](http://www.brydge.com/support) or call +1 (435) 604-0481. Brydge, at its sole discretion and option, will (1) repair the product at no charge using new parts or parts that are equivalent to new in performance and reliability, or (2) replace or exchange the product with a product of equivalent functionality and value. Brydge offers free return shipping on any approved warranty claims. A shipping label will be provided to you if you are within the United States. If you are outside the United States, Brydge will reimburse your return shipping to a maximum of US\$15.00 after providing a copy of the shipping receipt.

**Australia Only:** Our goods come with guarantees that cannot be excluded under the Australian Consumer Law. You are entitled to a replacement or refund for a major failure and compensation for any other reasonably foreseeable loss or damage. You are also entitled to have the goods repaired or replaced if the goods fail to be of acceptable quality and the failure does not amount to a major failure.

Brydge Technologies LLC | 1912 Sidewinder Dr., Suite 104, Park City, UT 84060 USA

HAVE A QUESTION? Visit [www.brydge.com/support](http://www.brydge.com/support)

## Documents / Resources

	<p><a href="#">BRYDGE BRY801K Bluetooth Wireless keyboard</a> [pdf] User Manual</p> <p>BRY801K, 2ADRG-BRY801K, 2ADRGBRY801K, BRY801K Bluetooth Wireless keyboard, BRY801K, Bluetooth Wireless keyboard, 10.2 MAX</p>
---	--

## References

- [brydge.com/102-max-plus-instructions](http://www.brydge.com/102-max-plus-instructions)
- [Brydge Customer Support - How can we help?](#)
- [Product Registration - Brydge Technologies](#)
- [System Maintenance | Federal Communications Commission](#)