



BRYDGE Air Max+ Keyboard with Trackpad for iPad User Manual

[Home](#) » [Brydge](#) » BRYDGE Air Max+ Keyboard with Trackpad for iPad User Manual 

Contents

- [1 BRYDGE Air Max+ Keyboard with Trackpad for iPad](#)
- [2 POWER](#)
- [3 PAIR](#)
- [4 SETTING](#)
- [5 TRACKPAD GESTURES](#)
- [6 KEYBOARD SHORTCUTS](#)
- [7 INSERT /REMOVE](#)
- [8 Documents / Resources](#)
- [9 Related Posts](#)

B R Y D G E

BRYDGE Air Max+ Keyboard with Trackpad for iPad



POWER

- TO TURN ON: Press the power key for one second until the LED flashes green.
- TO TURN OFF: Press and hold the power key for three seconds until the LED flashes red.

NOTE: The Brydge Air MAX+ includes Instant-On, which means that reconnecting no longer takes seconds. Once paired, your keyboard will instantly connect to your iPad for up to 4 hours before entering sleep mode without impacting power consumption.

PAIR

TO PAIR: Press and hold the Bluetooth™ key for three seconds until the LED flashes blue. On your iPad, under Settings> Bluetooth™ select Brydge Air MAX+.

When successfully paired, the blue LED will turn off and your keyboard and trackpad will be active

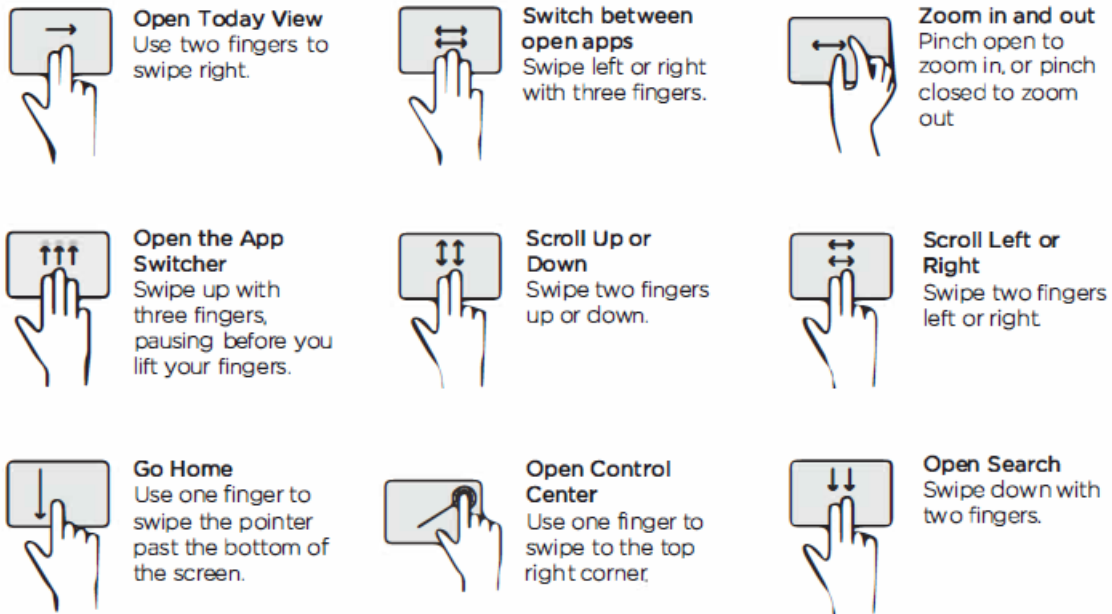
UPDATE FIRMWARE

Download Brydge Connect from the App Store for the latest firmware updates.

SETTING

Assistive Touch settings must be off for gestures to work properly. To do this, go to iPad Settings> Accessibility> Touch> AssistiveTouch > OFF

TRACKPAD GESTURES



KEYBOARD SHORTCUTS

Copy
Command + C

Paste
Command + V

Cut
Command + X

Underline
Command + U

Italic
Command + I

Home Screen
Command + H

Switch App
Command + Tab

Show Dock
Command + Option + D

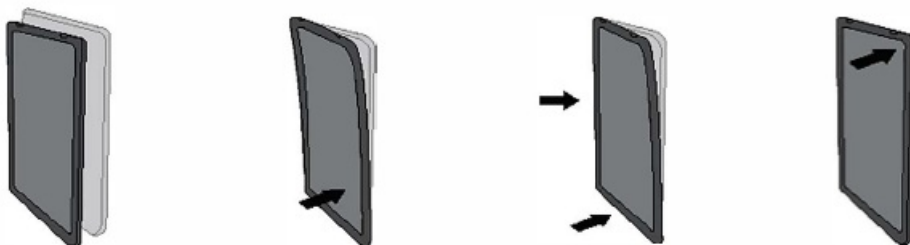
Search
Command + Space

Undo
Command + Z

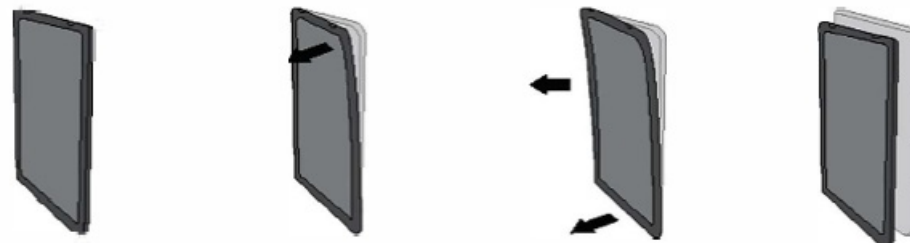
Switch Language

Ctrl + Shift + Spacebar (Spacebar allows you to toggle through available languages)

ATTACH PROTECTIVE CASE



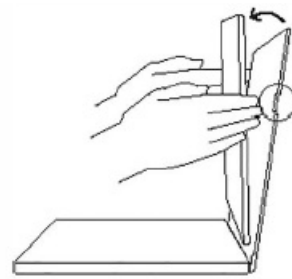
REMOVE PROTECTIVE CASE




INSERT /REMOVE

TO INSERT Place your Brydge on a flat surface and open the case. Place your iPad in the bottom of the case and lean it towards the back. The magnets will snap it into place.

TO REMOVE: Place your Brydge on a flat surface. Use the tab on the right side of the case to release the iPad.



CHARGE

TO CHECK BATTERY LIFE: In Today View, go to the BATTERIES section to check battery life. If not available, swipe left on your Home Screen to show Today View, scroll to the bottom and click edit. Scroll down to Batteries, and click the green  icon to add.

NOTE: If battery life is below 1596, backlit key functionality will be disabled to conserve battery.

TO CHARGE Insert the charging cable into the keyboard and plug the other end into a power source. A solid red LED indicates the Brydge is charging.

When the keyboard is fully charged, the red LED will turn off. A full charge can take up to three hours.

WARRANTY:

Thank you for purchase Brydge product. This product comes with a 1-year Limited hardware warranty on the terms and conditions set out in this document and at www.brydge.com/warranty. All Brydge warranties are non-transferrable and are only available to the original end-user of the product. Warranties do not apply to products purchased from on line vendors unauthorized to sell Brydge-branded product. If a defect arises during the warranty period, cease using the product and contact Brydge.


To obtain warranty service, visit www.brydge.com/support or call +1 (435) 604-0481. Brydge, at its sole discretion and option, will (1) repair the product at no charge using new parts or parts that are equivalent to new in performance and reliability, or (2) replace or exchange the product with a product of equivalent functionality and value. Brydge offers free return shipping on any approved warranty claims. A shipping label will be provided to you if you are within the United States. If you are outside the United States, Brydge will reimburse your return shipping to a maximum of US\$15.00 after providing a copy of the shipping receipt.

Australia Only: Our goods come with guarantees that cannot be excluded under the Australian Consumer Law. You are entitled to a replacement or refund for a major failure and compensation for any other reasonably foreseeable loss or damage. You are also entitled to have the goods repaired or replaced if the goods fail to be of acceptable quality and the failure does not amount to a major failure.

Brydge Technologies LLC | 1912 Sidewinder Dr., Suite 104, Park City, UT 84060 USA

HAVE A QUESTION? Visit www.brydge.com/support

Documents / Resources

	BRYDGE Air Max+ Keyboard with Trackpad for iPad [pdf] User Manual Air Max, Keyboard with Trackpad for iPad, Air Max Keyboard with Trackpad for iPad
---	--