



## BRYDGE 10.5 Keyboard for iPad Pro User Manual

[Home](#) » [Brydge](#) » BRYDGE 10.5 Keyboard for iPad Pro User Manual 

### Contents

- [1 BRYDGE 10.5 Keyboard for iPad Pro](#)
- [2 Product Information](#)
- [3 Product Usage Instructions](#)
- [4 INSERT/REMOVE](#)
- [5 POWER](#)
- [6 PAIR](#)
- [7 KEYBOARD SHORTCUTS](#)
- [8 Documents / Resources](#)

## B R Y D G E

### BRYDGE 10.5 Keyboard for iPad Pro



## Product Information

The product is a keyboard designed specifically for the iPad Pro 10.5. It is manufactured by Brydge and can be found at [www.brydgekeyboards.com](http://www.brydgekeyboards.com). The keyboard has various features including a hinge grip, power button, Bluetooth pairing, battery indicator, charging port, backlit keys, keyboard shortcuts, on-screen keyboard toggle, screen brightness adjustment, quick lock, home and control center buttons, Siri button, player controls, volume adjustment, and a battery life indicator.

## Product Usage Instructions

### 1. Insert/Remove

- Lift your iPad to test the hinge grip. Ensure that your iPad and Brydge are held firmly together.
- If the iPad is loose, remove it and gently squeeze the hinges. Repeat this process until your iPad is held firmly.
- To remove the iPad, hold it and pull it straight up while firmly holding your Brydge against a hard surface with the other hand.

### 2. Power

- To manually power on, press and hold the power key. The light will turn green for 3 seconds to indicate power.
- Once paired, the Brydge will automatically wake upon opening. The power key will turn green for three seconds to indicate that the Brydge is awake.
- To manually power off, press and hold the power key for 3 seconds. The light will turn red momentarily to indicate that it's powered off.
- The Brydge will enter sleep mode after 20 minutes of non-use to conserve battery. Press any key to turn it back on. Sleep mode is activated when both devices are closed, similar to a laptop.

### 3. Pair

- Once the keyboard is on, press and hold the Bluetooth key for 3 seconds. The power key will flash blue until the keyboard is successfully paired.
- On your iPad, go to Settings > Bluetooth and select "Brydge 10.5". The light on the power key will shut off to indicate that the Brydge has paired, and the iPad Settings will show that it's connected.

### 4. Charge

- To check battery life, press and hold the battery key for four seconds. The power key will flash three times: Green (75-100% battery), Yellow (25-74% battery), Red (10-24% battery).
- When the battery is 9% or lower, the backlit keys will be disabled and the light will flash continuously.
- To charge your Brydge, insert the supplied MICRO USB cable into the charging port on the front right corner. Charging may take up to 3 hours.
- The battery is charging when the light on the power key is red. The Bridge is fully charged when the light turns off.
- Once charging is complete, you can remove the cable. The battery should last 12 months or more based on use.

### 5. Keyboard Shortcuts

- Various keyboard shortcuts are available for functions such as Undo, Copy, Underline, Cut, Paste, Italic, Switch Language, Show Dock, Home Screen, Switch App, and Search. Refer to the manual for the specific key combinations.

### 6. On-Screen Keyboard

- You can easily toggle between using the Brydge keyboard and the on-screen keyboard.

#### 7. Screen Brightness

- You can adjust the screen brightness up and down using the keyboard.

#### 8. Backlit Keys

- You can adjust the brightness of the keyboard backlight.

#### 9. Quick Lock

- You can lock your iPad with a single touch using the Quick Lock feature.

#### 10. Home & Control Center

- Press the corresponding button once for the home screen and twice for the control center.

#### 11. Siri

- There is a dedicated Siri button for easy access to the Siri voice assistant.

#### 12. Player Controls

- You can control media playback with the rewind, play/pause, and fast-forward buttons.

#### 13. Volume

- You can adjust the volume up, down, or mute it using the volume buttons.

#### 14. Battery

- Press the battery key to see how much battery life is left.

#### 15. Bluetooth

- Press the Bluetooth key to pair your Brydge with your iPad.

#### 16. Power

- Use the power button to turn your Brydge on or off.

If you have any questions, you can contact Brydge directly at [support@brydgekeyboards.com](mailto:support@brydgekeyboards.com).

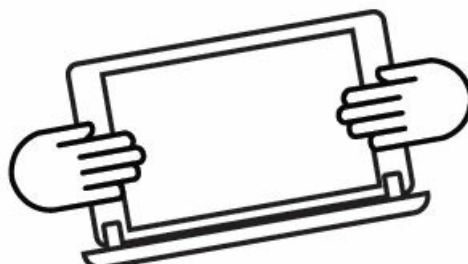
For more information, visit [www.brydgekeyboards.com](http://www.brydgekeyboards.com).

### INSERT/REMOVE

- Place your Brydge on a flat surface, rotate the hinges upright to 90°, and insert your iPad into the hinges with the home button on the right.

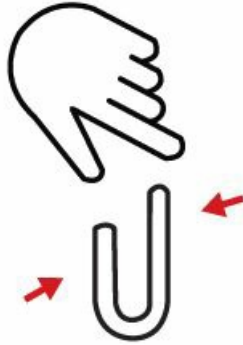


- Lift your iPad to test the hinge grip. Your iPad and Brydge should be held firmly together.

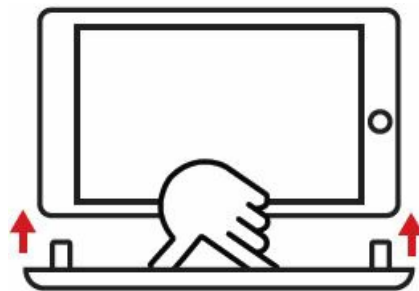


- If the iPad is loose, remove it and give the hinges a gentle squeeze. Repeat this process until your iPad is held

firmly.



- To remove, hold your iPad and pull straight up, with one hand firmly holding your Brydge against a hard surface.



## POWER

- To manually power on, press and hold the power key; the light will turn green for 3 seconds to indicate power
- **NOTE:** Once paired, your Brydge will automatically wake upon opening.
- The power key will turn green for three seconds to let you know your Brydge is awake.



- To manually power off, press and hold the power key for 3 seconds; the light will turn red momentarily to indicate it's powered off
- **NOTE:** To conserve battery, your Brydge will enter sleep mode after 20 minutes of non-use. Press any key to turn it back on. Your Brydge will enter sleep mode when both devices are closed like a laptop

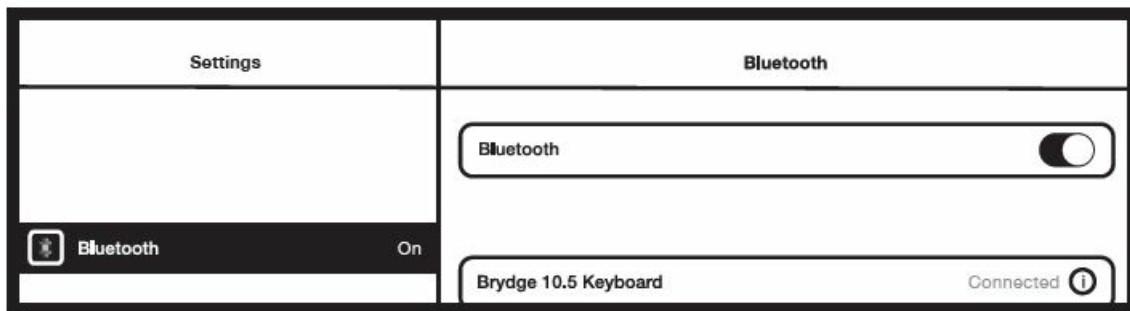


## PAIR

- Once the keyboard is on, press and hold the Bluetooth™ key for 3 seconds. The power key will flash blue until the keyboard is successfully paired.



- On your iPad, under Settings > Bluetooth select Brydge 10.5



- The light on the power key will shut off to let you know the Brydge has paired and the iPad Settings will say connected



## CHARGE

- To check battery life, press and hold the battery key for four seconds Power key will flash three times:
- Green = 75-100%
- Yellow = 25-74%
- Red = 10-24%

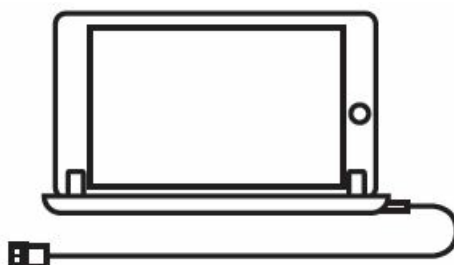


- When the battery is 9% or lower, backlit keys will be disabled and the light will flash continuously



- To charge your Brydge insert the supplied MICRO USB cable into the charging port on the front right corner

**NOTE:** Charging can take up to 3 hours



- The battery is charging when the light on the power key is red; your Brydge is fully charged when the light turns off Once done charging you can remove the cable (battery should last 12 months or more based on use)



## **KEYBOARD SHORTCUTS**

### **Undo**

- Command + Z

### **Copy**

- Command + C

### **Underline**

- Command + U

### **Show Dock**

- Command + Option + D

### **Home Screen**

- Command + H

### **Cut**

- Command + X

### **Paste**

- Command + V

### **Italic**

- Command + I

### **Switch App**

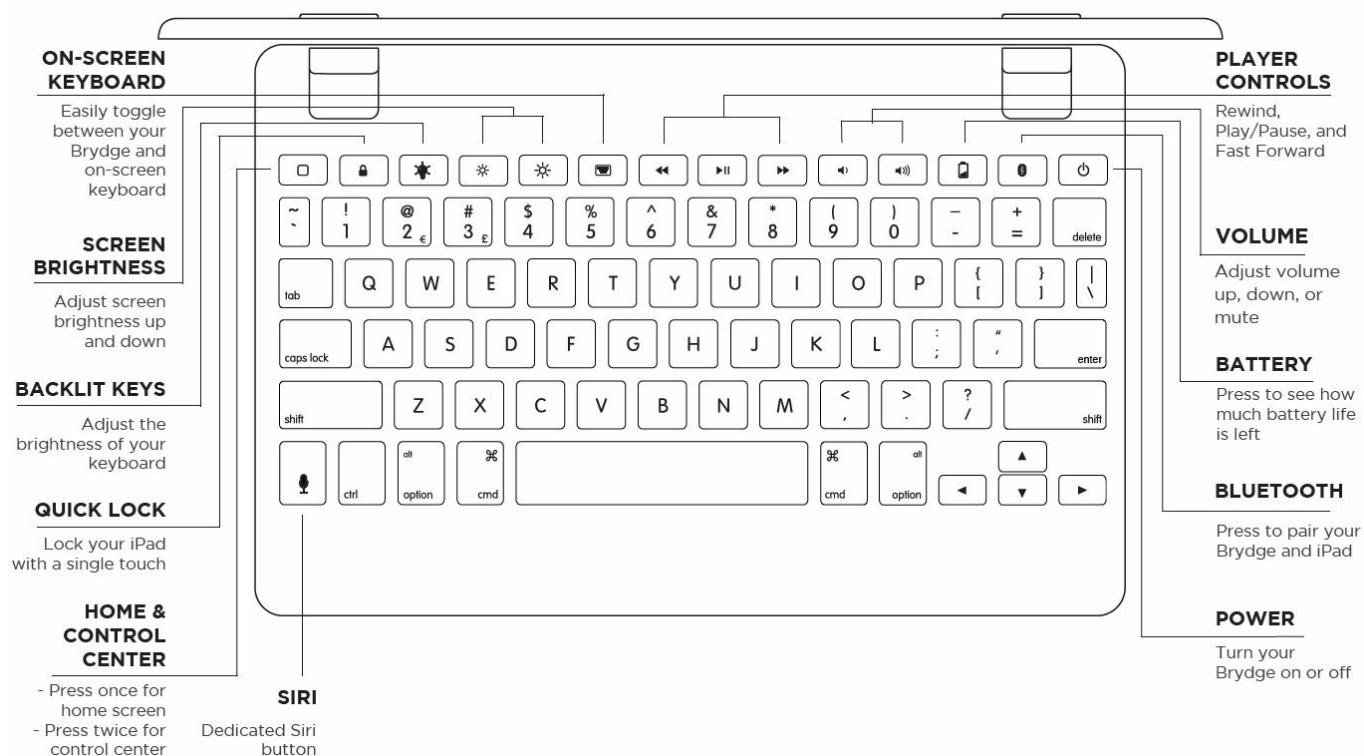
- Command + Tab

### **Search**

- Command + Space

## Switch Language


- ctrl + shift + Spacebar (Spacebar allows you to toggle through available languages)



- Have a question? Contact Brydge directly at [support@brydgekeyboards.com](mailto:support@brydgekeyboards.com).
- Find more information at [www.brydgekeyboards.com](http://www.brydgekeyboards.com).

© 2017 Brydge. All Rights Reserved. Surface®, Microsoft®, Windows®, and Cortana® are registered trademarks of Microsoft Corporation. The Bluetooth word, mark, and logos are owned by Bluetooth SIG, Inc. Use of such marks by Brydge is under license. Brydge is a trademark of Brydge Global Pte. Ltd. Other trademarks and tradenames are those of their respective owners. <https://manual-hub.com/>.

## Documents / Resources

	<p><b>BRYDGE 10.5 Keyboard for iPad Pro</b> [pdf] User Manual 10.5 Keyboard for iPad Pro, 10.5, Keyboard for iPad Pro, iPad Pro</p>
---	---

