



Brydge 10.2 MAX+ iPad Keyboard User Manual

[Home](#) » [Brydge](#) » Brydge 10.2 MAX+ iPad Keyboard User Manual



10.2 MAX+ User Manual



Brydge 10.2 MAX+ User Manual

Contents [[hide](#)]

- 1 POWER
- 2 PAIR
- 3 CUSTOMIZE THE TRACKPAD
- 4 ATTACH PROTECTIVE CASE
- 5 REMOVE PROTECTIVE CASE
- 6 INSERT/REMOVE KEYBOARD
- 7 CHARGE
- 8 KEYBOARD SHORTCUTS
- 9 WARRANTY
- 10 Documents / Resources
 - 10.1 References
- 11 Related Posts

POWER

TO TURN ON: Press the power key for one second until the LED flashes green.

TO TURN OFF: Press and hold the power key for three seconds until the LED flashes red.

NOTE: To conserve battery, your Brydge will enter sleep mode after 20 minutes of non-use. Press any key to turn it back on. Your Brydge will enter sleep mode when both devices are closed like a laptop.



PAIR

TO PAIR: Press and hold the Bluetooth™ key for three seconds until the LED flashes blue. On your iPad, under Settings > Bluetooth TM select Brydge 10.2 MAX+. When successfully paired, the blue LED will turn off and your keyboard and trackpad will be active.



CUSTOMIZE THE TRACKPAD

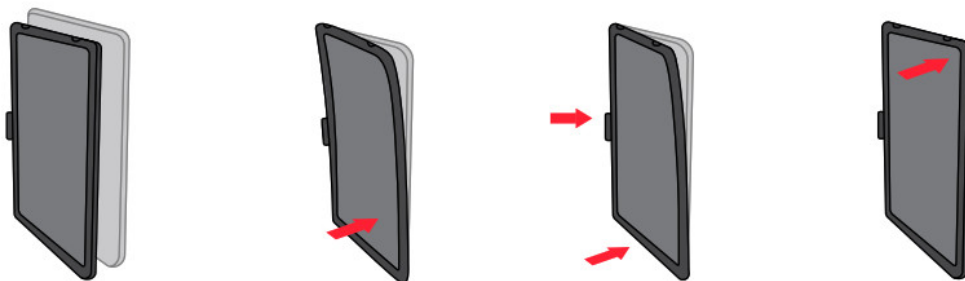
For up-to-date settings and video instructions, visit: [Brydge 10.2 MAX Plus User Manual_INT](#) [PDF]

UPDATE FIRMWARE

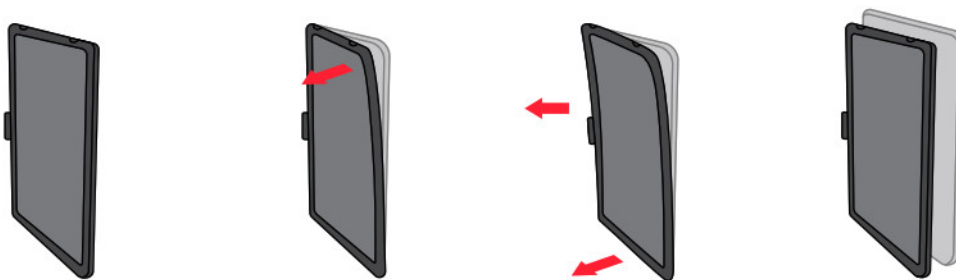


Download Brydge Connect from the App Store for the latest firmware updates.

ATTACH PROTECTIVE CASE



REMOVE PROTECTIVE CASE

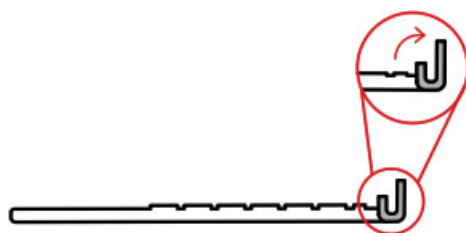


INSERT/REMOVE KEYBOARD

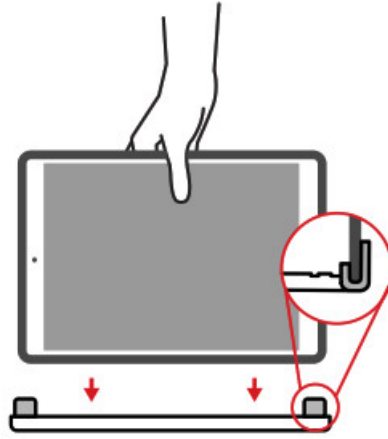
IMPORTANT

Before attaching your keyboard, ensure your iPad is inserted into the supplied protective case.

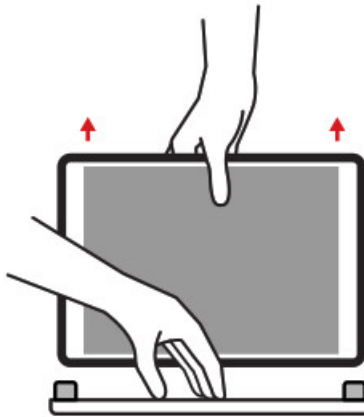
BEFORE INSERTING: Place your Brydge on a flat surface and set the hinges upright to 90 degrees.



TO INSERT: Insert your iPad (in a protective case) into the hinges with the home button on the left.



TO REMOVE: Place your Brydge on a flat surface. Place your hand towards the back of the keyboard and pull up.

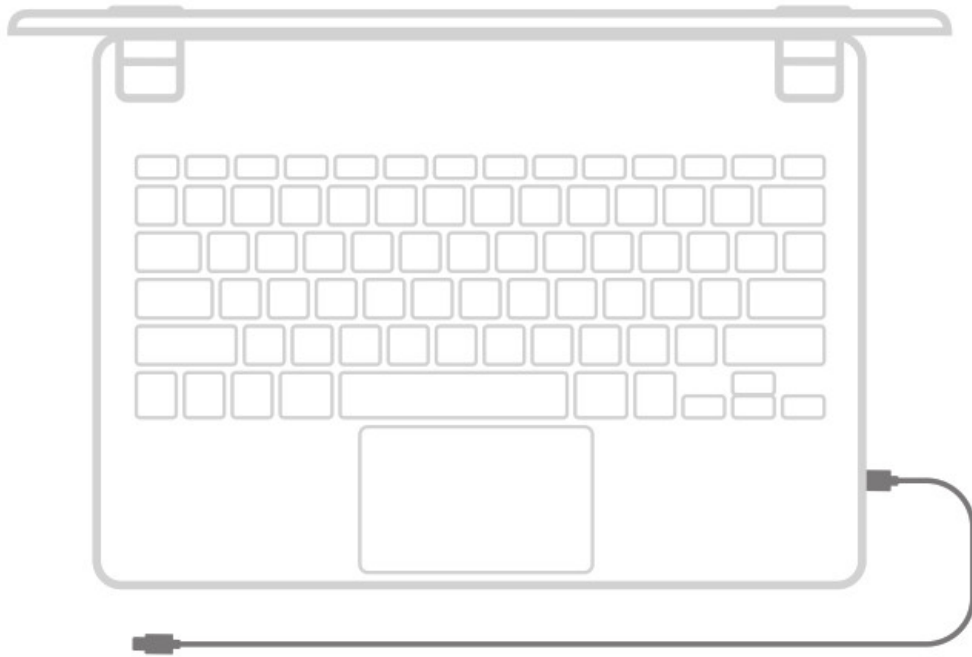


CHARGE

TO CHECK BATTERY LIFE: In Today View, go to the BATTERIES section to check battery life. If not available, swipe left on your Home Screen to show Today View, scroll to the bottom and click edit. Scroll down to Batteries, and click the green '+' icon to add.

NOTE: If battery life is below 15%, backlit key functionality will be disabled to conserve battery.

TO CHARGE: Insert the charging cable into the keyboard and plug the other end into a power source. A solid red LED indicates the Brydge is charging. When the keyboard is fully charged, the red LED will turn off. A full charge can take up to three hours.



KEYBOARD SHORTCUTS

Copy Command + C	Paste Command + V	Cut Command + X	Underline Command + U	Italic Command + I
Home Screen Command + H	Switch App Command + Tab	Show Dock Command + Option + D	Search Command + Space	Undo Command + Z
Switch Language Ctrl + Shift + Spacebar (Spacebar allows you to toggle through available languages)				

WARRANTY

Thank you for purchasing a Brydge product. This product comes with a 1-year limited hardware warranty on the terms and conditions set out in this document and at www.brydge.com/warranty. All Brydge warranties are nontransferrable and are only available to the original end-user of the product. Warranties do not apply to products purchased from online vendors unauthorized to sell Brydge-branded products. If a defect arises during the warranty period, cease using the product and contact Brydge. To obtain warranty service, visit www.brydge.com/support or call +1 (435) 604-0481. Brydge, at its sole discretion and option, will (1) repair the product at no charge using new parts or parts that are equivalent to new in performance and reliability, or (2) replace or exchange the product with a product of equivalent functionality and value. Brydge offers free return shipping on any approved warranty claims. A shipping label will be provided to you if you are within the United States. If you are outside the United States, Brydge will reimburse your return shipping to a maximum of US\$15.00 after providing a copy of the shipping receipt.

Australia Only: Our goods come with guarantees that cannot be excluded under the Australian Consumer Law. You are entitled to a replacement or refund for a major failure and compensation for any other reasonably foreseeable loss or damage. You are also entitled to have the goods repaired or replaced if the goods fail to be of acceptable quality and the failure does not amount to a major failure.

Brydge Technologies LLC | 1912 Sidewinder Dr., Suite 104, Park City, UT 84060 USA

HAVE A QUESTION? Visit www.brydge.com/support



MODEL: BRY801
SKU: BRY8012
Complies with IMDA Standards
DA105282

Documents / Resources



[Brydge 10.2 MAX+ iPad Keyboard](#) [pdf] User Manual
10.2 MAX iPad Keyboard

References

- brydge.com/102-max-plus-instructions
- [Brydge Customer Support - How can we help?](#)
- [Product Registration - Brydge Technologies](#)