



BROWAN TBSL100 Sound Level Sensor User Manual

[Home](#) » [BROWAN](#) » BROWAN TBSL100 Sound Level Sensor User Manual 

Contents

- [1 BROWAN TBSL100 Sound Level Sensor](#)
- [2 Specifications](#)
- [3 Operation](#)
- [4 Messages](#)
- [5 Battery](#)
- [6 Label format information](#)
- [7 Important Product & Safety Instructions](#)
- [8 Warnings](#)
- [9 Notices](#)
- [10 Cautions](#)
- [11 Regulatory](#)
- [12 Documents / Resources](#)
- [13 Related Posts](#)



BROWAN

BROWAN TBSL100 Sound Level Sensor



Description

The Sound Level Sensor utilizes LoRaWAN connectivity to provide to easily measure and investigate sound levels in decibels (dBA) in a variety of building environments.

Specifications

Mechanical

Sensor

Length x Width x Height	50mm x 20mm x 50mm
Weight	30g without battery 40g with battery
Sensor	<ul style="list-style-type: none">• MEMS microphone• Measuring range: 40~100dB(A)• Frequency Response: 100~10,000 Hz• Resolution: 1 dB

Environmental

Temperature	0°C to +50°C
IP Rating	IP 40 equivalent

Radio

Frequency	<ul style="list-style-type: none"> • 863–870MHz for EU • 902–928MHz for North America
Tx Power	US: +19dBm EU: +17dBm
Rx Sensitivity	-135dBm
Antenna Gain	-2dBi Peak, -5dBi Avg

Certifications and Conformity

- FCC ID: pending IC:
- CE
- ROHS REACH

Power

Source	3.6V 1/2 AA Li-SOCl ₂ 1200mAh battery
Maximum Voltage	3.6V
Minimum Voltage	3.1V
Current	135mA maximum/ 100uA minimum

User Interface

LEDs One blue LED

Additional Features

- PCB Temperature
- Battery Monitoring

Operation

Transport Mode

They are shipped with a plastic battery isolation tab that must be removed to enable operation.

Default Operation

While in default operation the device will send a join request message after booting. After joining successfully, the device will detect the decibel value every 5 minutes. If the decibel value over the threshold, the sensor will send a status message.

Messages

LoRaWAN Packets for this device use port 105.

Status

Triggers

Packet Triggers: detect decibel value per 5 minutes or the decibel value is more than the threshold.

Payload

Port	105
Payload Length	4 bytes

Bytes	0	1	2	3
Field	Status	Battery	Temp	Decibel

Payload

Status	Sensors status
	Bit [0] 0 -> keep alive, 1 -> trigger threshold event. Bit [7:1] RFU
Battery	Battery level
	Bits [3:0] unsigned value v, range 1 – 14; battery voltage in $V = (25 + v) \div 10$.
	Bits [7:4] RFU
Temp	Temperature as measured by on-board NTC
	Bits [6:0] unsigned value T, range 0 – 127; temperature in $^{\circ}\text{C} = T - 32$.
	Bit [7] RFU measurement range -32 to 95°C
Decibel	Decibel value
	Bits [7:0] unsigned value T, range 40 ~ 100 (dBA). 255(0xFF) => Sensor could not measure decibel value.

Battery

Replacement

Use ER14250 or equivalent.

Remove the upper cap and replace the battery.



Cautions

CAUTION: Disposal of a battery (or battery pack) into a fire or a hot oven, or mechanically crushing or cutting of a battery (or battery pack) can result in an EXPLOSION!

Leaving a battery (or battery pack) in an extremely high temperature surrounding environment that can result in an EXPLOSION or leakage of flammable liquid or gas.

A battery (or battery pack) subjected to extremely low air pressure may also result in an EXPLOSION or leakage of flammable liquid or gas.

Discard used batteries according to the manufacturer's instructions.

CAUTION: The unit is provided with a battery-powered circuit.

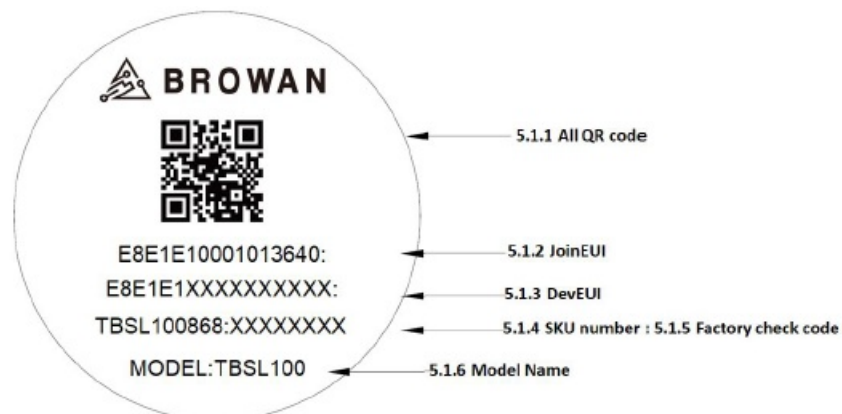
There is a danger of explosion if the battery is incorrectly replaced.

Replace only with the same or equivalent type recommended by the manufacturer. Discard used batteries according to the manufacturer's instructions.

Risk of Explosion if Battery is replaced by an Incorrect Type. Dispose of Used Batteries According to the Instructions.

Label format information

Round label



All QR code

URN:LWDP:E8E1E10001013641:E8E1E1000XXXXXXXX:TBSL100915:XXXXXXXX.

The total maximum resulting character sentence is 72 alphanumeric characters long.

JoinEUI

900MHz: E8E1E10001013641. (US/AU/AS923/BR)

800MHz: E8E1E10001013642. (EU/IN/RU)

Uses a hexadecimal representation resulting in 16 characters.

DevEUI

E8E1E1000XXXXXX.

Uses a hexadecimal representation resulting in 16 characters

Model number

TBSL100915

Sensor's model name

915 for US/AU/AS923/BR
868 for EU/IN/RU

Non-reserved characters(except “:” and space) with a maximum length of 20 characters.

Factory check code

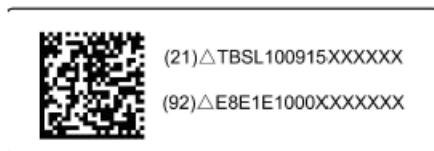
XXXXXXXX.

Checksum of the factory production line.

Model Name

MODEL:TBSL100.

Fixed code, not including in QR code.



PE Bag Label



Back Label

Definition of Back Label and PE Bag Barcode Label: GS1 DataMatrix

- The GS1 Application Identifier (21) indicates that the GS1 Application Identifier data field contains a serial number.
- The GS1 Application Identifier (92) assigned to the company's internal information is DevEUI.

Caution! For more information please refer to chapter 5.2 and chapter 10.

Important Product & Safety Instructions

For the most current and more detailed information about Tabs features and settings as well as safety instructions, please download the user manual for the products online at www.browan.com before the use of any Tabs products or services.

Certain sensors contain magnets. Keep away from ALL Children! Do not put in nose or mouth. Swallowed magnets can stick to intestines causing serious injury or death. Seek immediate medical attention if magnets are swallowed.

These products are not toys and contain small parts that can be dangerous to children under 3 years old. Do not allow children or pets to play with products.

Observe proper precautions when handling batteries. Batteries may leak or explode if improperly handled.

Observe the following precautions to avoid a sensor explosion or fire:

- Do not drop, disassemble, open, crush, bend, deform, puncture, shred, microwave, incinerate or paint the

sensors, Hub or other hardware.

- Do not insert foreign objects into any opening on the sensors or Hub, such as the USB port.
- Do not use the hardware if it has been damaged—for example, if cracked, punctured or harmed by water. Disassembling or puncturing the battery(whether integrated or removable) can cause an explosion or fire.
- Do not dry the sensors or battery with an external heat source such as a microwave oven or hairdryer.

Warnings

- Do not place naked flame sources, such as lighted candles, on or near the equipment.
- The battery shall not be exposed to excessive heat such as sunshine, fire or the like.
- Do not dismantle, open or shred battery pack or cells.
- Do not expose batteries to heat or fire. Avoid storage in direct sunlight.
- Do not short-circuit the battery. Do not store batteries in a box or drawer where they may short-circuit each other or be short-circuited by other metal objects.
- Do not remove a battery from its original packaging until required for use.
- Do not subject batteries to mechanical shock.
- In the event of a battery leaking, do not allow the liquid to come in contact with the skin or eyes. If contact has been made, wash the affected area with copious amounts of water and seek medical advice.
- Do not use any charger other than that specifically provided for use with the equipment.
- Observe the plus (+) and minus (-) marks on the battery and equipment and ensure correct use.
- Do not use any which is not designed for use with the product.
- Do not mix cells of different manufacture, capacity, size or type within a device.
- Keep batteries out of the reach of children.
- Seek medical advice immediately if a battery has been swallowed.
- Always purchase the correct battery for the equipment.
- Keep batteries clean and dry.
- Wipe the battery terminals with a clean dry cloth if they become dirty.

Notices

- Avoid exposing your sensors or batteries to very cold or very hot temperatures. Low or high temperature conditions may temporarily shorten the battery life or cause the sensors to temporarily stop working.
- Take care in setting up the Hub Gateway and other hardware. Follow all installation instructions in the User Guide. Failure to do so may result in injury.
- Do not install hardware equipment while standing in water or with wet hands. Failure to do so can result in electric shock or death. Use caution when setting up all electronic equipment.
- When charging the sensors, do not handle the sensors with wet hands. Failure to observe this precaution could result in electric shock. PROP 65 WARNING: This product contains chemicals known to the State of California to cause cancer and birth defects or other reproductive harm
- Cleaning Tabs Products: Use a clean dry cloth or wipe to clean Tabs products. Do not use detergent or abrasive materials to clean the Tabs products, as this may damage the sensors.

Cautions

CAUTION: Disposal of a battery (or battery pack) into a fire or a hot oven, or mechanically crushing or cutting of a battery (or battery pack) can result in an EXPLOSION!

Leaving a battery (or battery pack) in an extremely high temperature surrounding environment that can result in an EXPLOSION or leakage of flammable liquid or gas.

A battery (or battery pack) subjected to extremely low air pressure may also result in an EXPLOSION or leakage of flammable liquid or gas.

Discard used batteries according to the manufacturer's instructions.

CAUTION: The unit is provided with a battery-powered circuit.

There is a danger of EXPLOSION if the battery is incorrectly replaced.

Replace only with the same or equivalent type recommended by the manufacturer. Discard used batteries according to the manufacturer's instructions.

Risk of EXPLOSION if Battery is replaced by an Incorrect Type. Dispose of Used Batteries According to the Instructions.

Regulatory

Hereby, Browan Communications Inc. declares that the radio equipment for Tabs products is in compliance with Directive 2014/53/EU.

This device complies with Part 15 of the FCC Rules and RSS Standards of Industry Canada. Operation is subject to the following two conditions: (1) this device may not cause harmful interference, and (2) this device must accept any interference received, including interference that may cause undesired operation.

Federal Communication Commission Interference Statement

This equipment has been tested and found to comply with the limits for a Class B digital device, pursuant to Part 15 of the FCC Rules. These limits are designed to provide reasonable protection against harmful interference in a residential installation. This equipment generates, uses and can radiate radio frequency energy and, if not installed and used in accordance with the instructions, may cause harmful interference to radio communications.

However, there is no guarantee that interference will not occur in a particular installation. If this equipment does cause harmful interference to radio or television reception, which can be determined by turning the equipment off and on, the user is encouraged to try to correct the interference by one of the following measures:

- Reorient or relocate the receiving antenna.
- Increase the separation between the equipment and receiver.
- Connect the equipment into an outlet on a circuit different from that to which the receiver is connected.
- Consult the dealer or an experienced radio/TV technician for help.

FCC Caution: Any changes or modifications not expressly approved by the party responsible for compliance could void the user's authority to operate this equipment.

This device complies with Part 15 of the FCC Rules. Operation is subject to the following two conditions: (1) This device may not cause harmful interference, and (2) this device must accept any interference received, including interference that may cause undesired operation.

IMPORTANT NOTE:

Radiation Exposure Statement:

The product complies with the US portable RF exposure limit set forth for an uncontrolled environment and is safe for intended operation as described in this manual. The further RF exposure reduction can be achieved if the product can be kept as far as possible from the user body or set the device to lower output power if such a function is available.

This transmitter must not be co-located or operating in conjunction with any other antenna or transmitter.

Industry Canada statement:

This device contains license-exempt transmitter(s)/receiver(s) that comply with Innovation, Science and Economic

Development Canada’s license-exempt RSS(s). Operation is subject to the following two conditions :

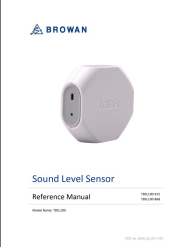
1. This device may not cause interference
2. This device must accept any interference, including interference that may cause undesired operation of the device

The product complies with the Canada portable RF exposure limit set forth for an uncontrolled environment and are safe for intended operation as described in this manual. The further RF exposure reduction can be achieved if the product can be kept as far as possible from the user body or set the device to lower output power if such a function is available.

This equipment should be installed and operated with minimum distance 0cm between the radiator & your body.

© 2020 Browan Communications Inc. All rights reserved.

Documents / Resources

	<p>BROWAN TBSL100 Sound Level Sensor [pdf] User Manual TBSP100, 2AAS9TBSP100, TBSL100-915, TBSL100-868, Sound Level Sensor</p>
--	--

Manuals+.