



## brother MFC-T4500DW Inkjet Multi Function Printer Installation Guide

[Home](#) » [Brother](#) » **brother MFC-T4500DW Inkjet Multi Function Printer Installation Guide** 

*brother MFC-T4500DW Inkjet Multi Function  
Printer Installation Guide*



**MFC-T4500DW**

# Quick Setup Guide

Read the *Product Safety Guide* first, then read this *Quick Setup Guide* for the correct installation procedure.

The latest manuals are available at the Brother Solutions Center: [support.brother.com/manuals](https://support.brother.com/manuals)

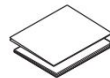
D01UE7001-00 ASA Version B

## Contents

- 1 1 Unpack the machine and check the components
- 2 2 Load plain A4 paper
- 3 3 Connect the power cord
- 4 4 Select your country or language (Initial setup only)
- 5 5 Set the date and time
- 6 6 Fill the ink tanks with the inbox ink
- 7 7 Machine settings
- 8 8 Select your language (if needed and only for certain models)
- 9 9 Connect the telephone line cord
- 10 10 Select a device to connect to your machine
- 11 11 Connect your computer
- 12 12 Alternative wireless setup
- 13 13 Print or scan using your mobile device
- 14 Documents / Resources
- 15 Related Posts

## 1 Unpack the machine and check the components

The components included in the box may differ depending on your country. Remove the protective tape or film covering the machine.



Watch our FAQ videos for help with setting up your Brother machine.  
[support.brother.com/videos](http://support.brother.com/videos)

**Inbox Ink Bottles**  
• [BTD60BK] Black  
• [BT5000Y] Yellow  
• [BT5000C] Cyan  
• [BT5000M] Magenta

**Quick Setup Guide  
Product Safety Guide**

**Power Cord**

**USB Interface Cable  
(For some countries)**



**Maintenance Sheet**



**Brother Installation Disc**



**Telephone Line Cord**



**Cleaning Kit for Paper  
Pick-up Rollers  
(For some countries)**

[support.brother.com/videos](http://support.brother.com/videos)

## NOTE

- The Reference Guide for this model is available on the enclosed installation disc.
- Save all packing materials and the box in case you must ship your machine.
- You must purchase the correct interface cable for the interface you want to use. A USB cable is included in some countries.

### USB cable

Use a USB 2.0 cable (Type A/B) that is no more than 5 metres long.

### Ethernet (Network) cable

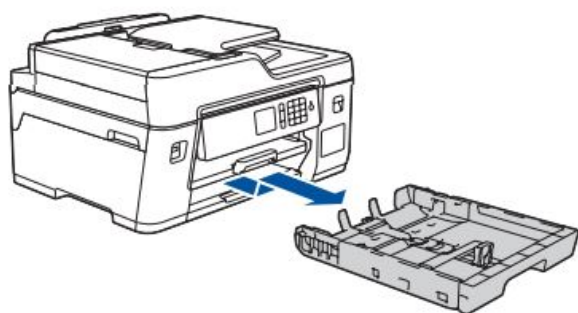
Use a straight-through Category 5 (or greater) twisted-pair cable for 10BASE-T or 100BASE-TX Fast Ethernet Network.

## Secure Network Access

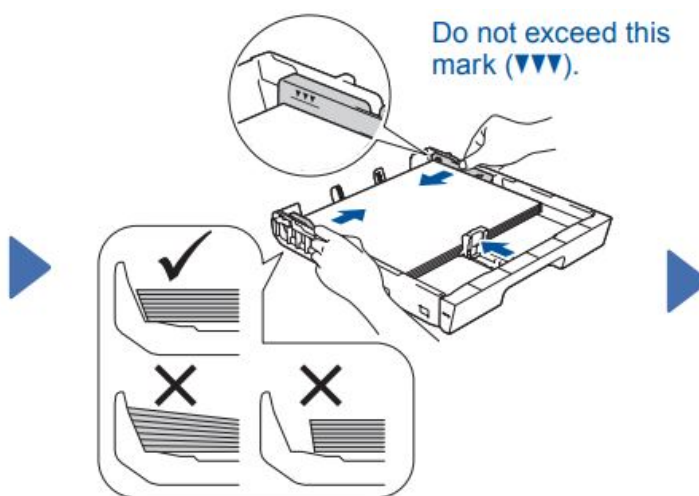
Your machine's default password is on the label on the back of the machine (preceded by "Pwd"). We strongly recommend you change it to protect your machine from unauthorised access.

## 2 Load plain A4 paper

For more information about paper handling and sizes, see the Reference Guide.



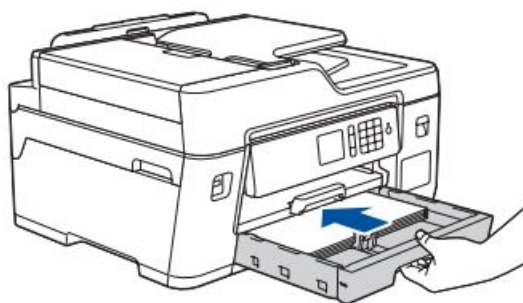
Pull the paper tray completely out of the machine as shown by the arrow.



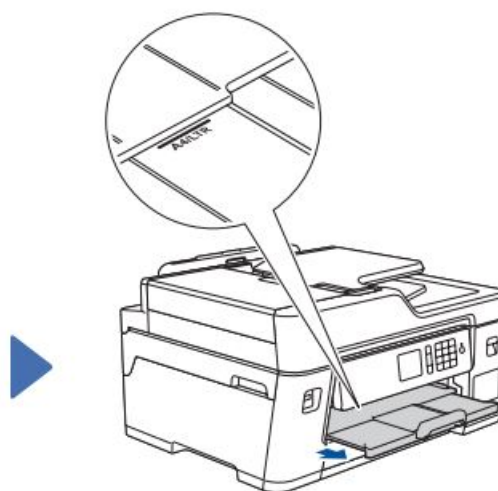
Do not exceed this mark (▼▼▼).

Adjust the paper guides.

Fan the paper well and load it in the tray.



Slowly push the paper tray completely into the machine.



Pull out the paper support until it locks into place.

## 3 Connect the power cord

Adjust the control panel angle to read the touchscreen more easily.



Connect the power cord. The machine will power on automatically.

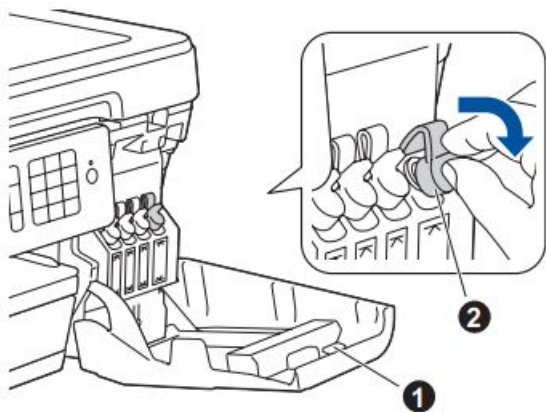
#### 4 Select your country or language (Initial setup only)

After turning the machine on, you may need to set your country or language (depending on your machine). If required, follow the touchscreen instructions.

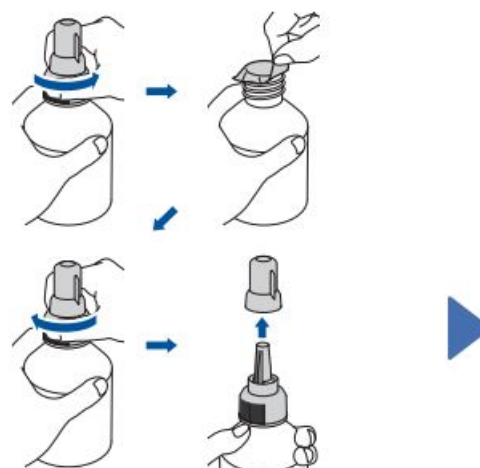
#### 5 Set the date and time

Follow the touchscreen instructions to set the date and time.

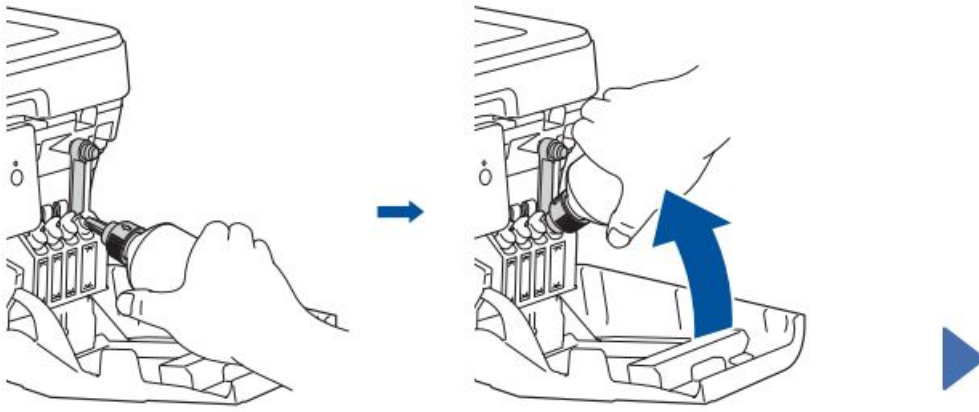
#### 6 Fill the ink tanks with the inbox ink



Open the ink tank cover ❶ and pull the tab ❷ downwards to open the cap of the ink tank.

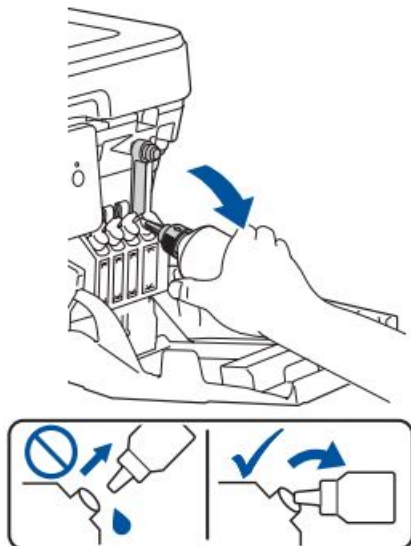


Remove the film and tighten the cap firmly.

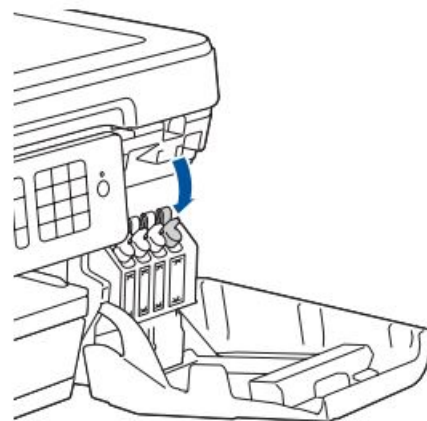


Remove the nozzle cap and insert the bottle nozzle firmly into the ink tank so that the ink does not spill.

The bottle is self-standing and the ink fills automatically until the bottle is empty. To fill the ink tank faster, squeeze the bottle on both sides.



When finished, remove the bottle, pointing the nozzle upward so the ink does not spill.



Push down on the cap of the ink tank to close it tightly. Repeat step **6** for the three other ink tanks.

Close the ink tank cover. The machine will prepare the ink tube system for printing.

## 7 Machine settings



When the machine has finished the initial cleaning process, follow the touchscreen instructions to configure the machine settings.

- Check print quality
- Configure the tray or paper size settings
- Set Firmware Update Notice



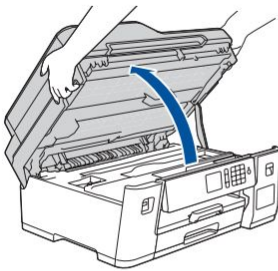
- Print the installation sheet

## 8 Select your language (if needed and only for certain models)

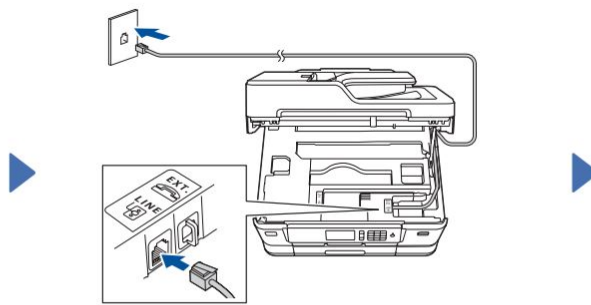
1. Press  [Settings] > [All Settings] > [Initial Setup] > [Local Language].
2. Press your language.
3. Press .

## 9 Connect the telephone line cord

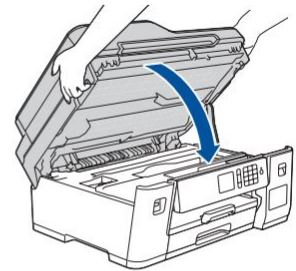
If you are not using your machine as a fax, go to (10) .  
For more information on using the fax feature, see the Online User's Guide.



Lift the scanner cover.



Connect the telephone line cord.  
Use the socket marked **LINE** and guide  
the cord out the back of the machine.



Close the scanner cover.

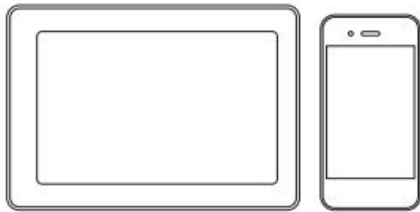
## 10 Select a device to connect to your machine

### Computer



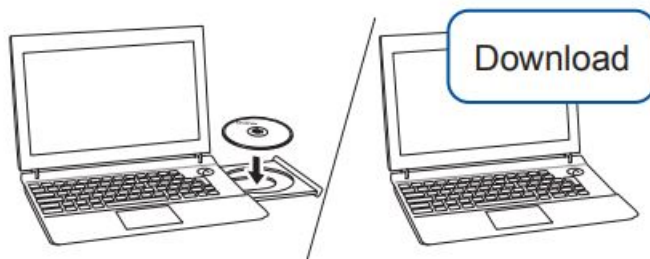
Go to **11** and follow the instructions.

# Mobile Device



Go to **12** and follow the instructions.

## 11 Connect your computer



Put the installation disc into your CD/DVD drive, or download the Full Driver & Software Package at:

For Windows®: [support.brother.com/windows](http://support.brother.com/windows)

For Mac: [support.brother.com/mac](http://support.brother.com/mac)

If you are using a recently released operating system on your computer, visit the above websites for updated driver and software information.

[support.brother.com/windows](http://support.brother.com/windows)

[support.brother.com/mac](http://support.brother.com/mac)

Follow the on-screen instructions and prompts.

For Windows®:

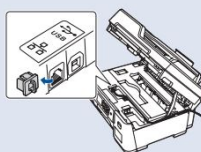
If the Brother screen does not appear automatically, go to **Computer (My Computer/This PC)**. Double-click the CD/DVD-ROM icon, and then double-click **start.exe**.

For Mac:

For full driver functionality, we recommend choosing the **CUPS driver** when adding a printer.

For Wired Network Connection and USB Connection:

Locate the correct port (based on the cable you are using) inside the machine as shown.

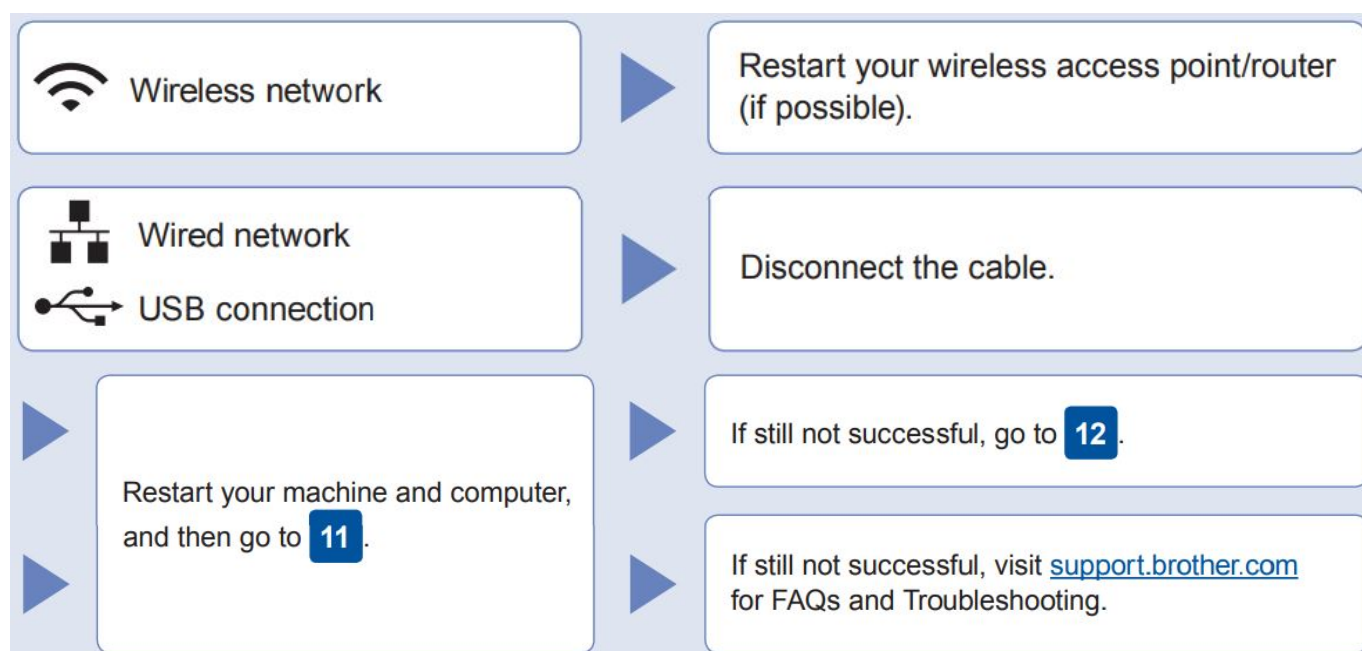


Finished

Brother regularly updates firmware to add features and apply bug fixes. To check for the latest firmware, visit [support.brother.com/up7](http://support.brother.com/up7).

Follow the on-screen instructions and prompts.

### Can't Connect? Check the following:

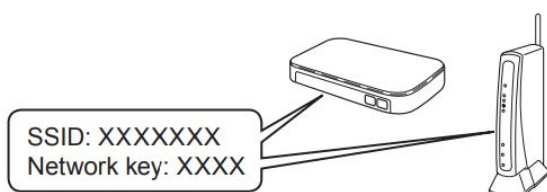


[support.brother.com](http://support.brother.com)

## 12 Alternative wireless setup

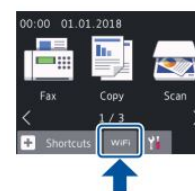
Find your SSID (Network Name) and Network Key (Password) on your wireless access point/router and write them in the table provided below.

SSID (Network Name)	
Network Key (Password)	



If you cannot find this information, ask your network administrator or wireless access point/router manufacturer.

Go to your machine, and press **WiFi** > [Setup Wizard] > [Yes].





Select the SSID (Network Name) for your access point/router and enter the Network Key (Password).

When the wireless setup is successful, the touchscreen displays [Connected].

If setup is not successful, restart your Brother machine and your wireless access point/router, and repeat **12**.

## For Computer

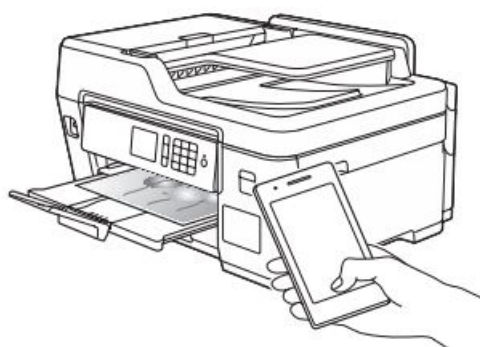
Go to **11** to install software.

## For Mobile Device

Go to **13** to install apps.

Even if you do not have a wireless access point/router, you can connect your device and your machine directly. For additional wireless network support, go to [support.brother.com/wireless-support](http://support.brother.com/wireless-support).

### 13 Print or scan using your mobile device



Your mobile device must be connected to the same wireless network as your Brother machine. AirPrint is available for all supported iOS devices including iPhone, iPad, and iPod touch. You do not need to download any software to use AirPrint. For more information, see the Online User's Guide.

Download and install the Mopria® Print Service app from [Google Play™](https://play.google.com/store/apps/details?id=com.mopria.print) using your Android™ device.



Download and install our free application Brother print & Scan from a mobile application store, such as the App Store, Google Play™, or Microsoft® Store using your mobile device.

Brother Support Center is a mobile app that provides the latest support information for your Brother product. Visit

the App Store or Google Play™ to download.

### Optional apps

You can print from or scan to your mobile device using various apps. For instructions, see the Online User's Guide.



<http://support.brother.com/wireless-support>

Additional Wireless Support: [support.brother.com/wireless-support](http://support.brother.com/wireless-support)

For FAQs, Troubleshooting, and to download software and manuals, visit [support.brother.com](http://support.brother.com). For product specifications, see the Online User's Guide.

© 2018 Brother Industries, Ltd. All rights reserved.

## Documents / Resources

	<p><a href="#">brother MFC-T4500DW Inkjet Multi Function Printer</a> [pdf] Installation Guide MFC-T4500DW, Inkjet Multi Function Printer</p>
---	--

[Manuals+](#)