



## brother MFC-L8610CDW All in One Color Printer User Guide

[Home](#) » [Brother](#) » brother MFC-L8610CDW All in One Color Printer User Guide 

### Contents

- [1 brother MFC-L8610CDW All in One Color Printer](#)
- [2 Unpack the machine and check the components](#)
- [3 Quick Setup Guide](#)
- [4 Documents / Resources](#)
- [5 Related Posts](#)



**brother MFC-L8610CDW All in One Color Printer**



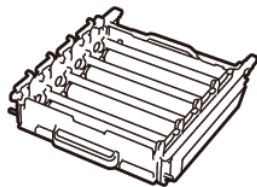
Read the Product Safety Guide first, then read this Quick Setup Guide for the correct installation procedure. Not all models are available in all countries.

The latest manuals are available at the Brother Solutions Center: [solutions.brother.com/manuals](https://solutions.brother.com/manuals)

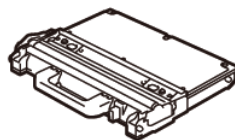
Watch our Video FAQs for help with setting up your Brother machine: [solutions.brother.com/videos](https://solutions.brother.com/videos)

## Unpack the machine and check the components

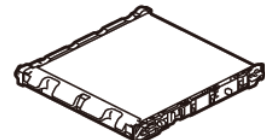
\* Already installed in the machine



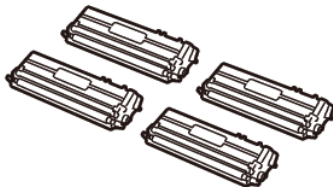
**Drum Unit\***



**Waste Toner Box\***



**Belt Unit\***



**Toner Cartridges\***  
(Black, Cyan, Magenta and Yellow)



**Telephone Line Cord**



**AC Power Cord**



**Brother Installation Disc**



**Quick Setup Guide**



**Product Safety Guide**



**Reference Guide**  
(only for certain models)

### NOTE:

- Manuals in Spanish for this model are available on the Brother Solutions Center. (USA only):

- The components included in the box may differ depending on your country.
- The available connection interfaces vary depending on the model.
- Interface cables are not included. You must purchase the correct interface cable if you require one.

#### USB cable

We recommend using a USB 2.0 cable (Type A/B) that is no more than 6 feet (2 meters) long.

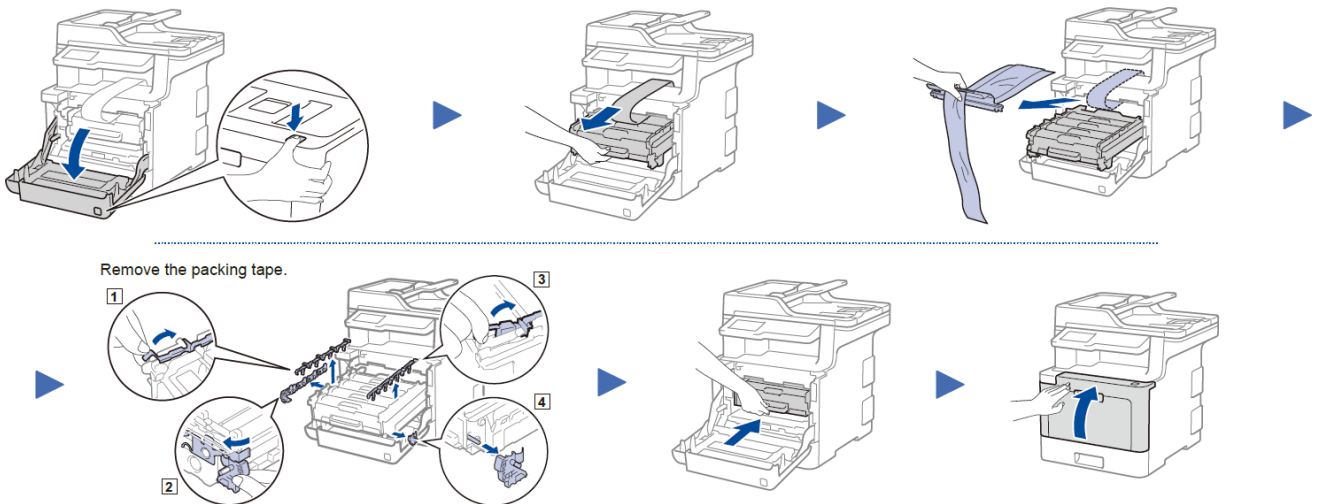
#### Network cable

Use a straight-through Category 5e (or greater) twistedpair cable.

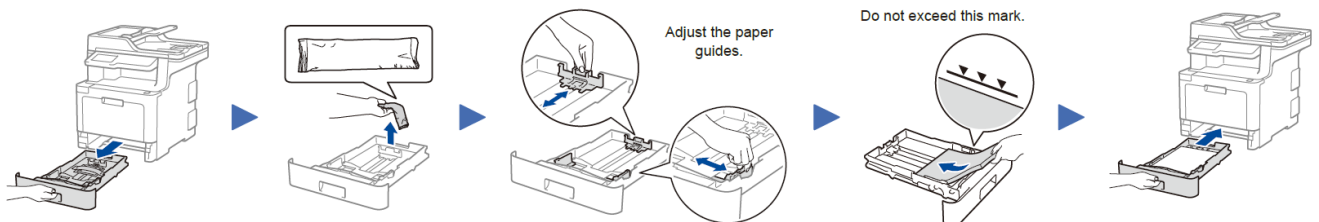
- The illustrations in this Quick Setup Guide show the MFC-L8900CDW.

## Quick Setup Guide

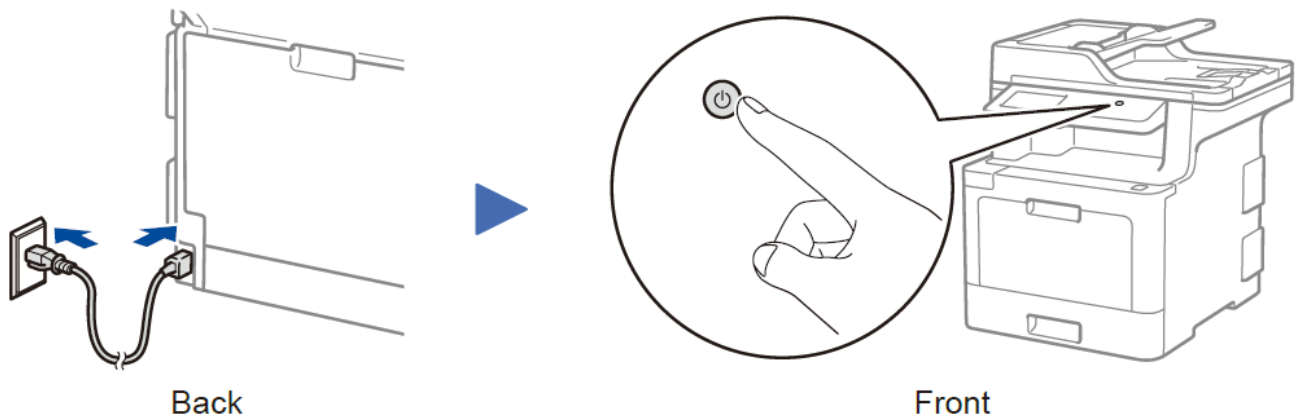
1. Remove the packing materials and install the drum unit and toner cartridge assembly



2. Load paper in the paper tray

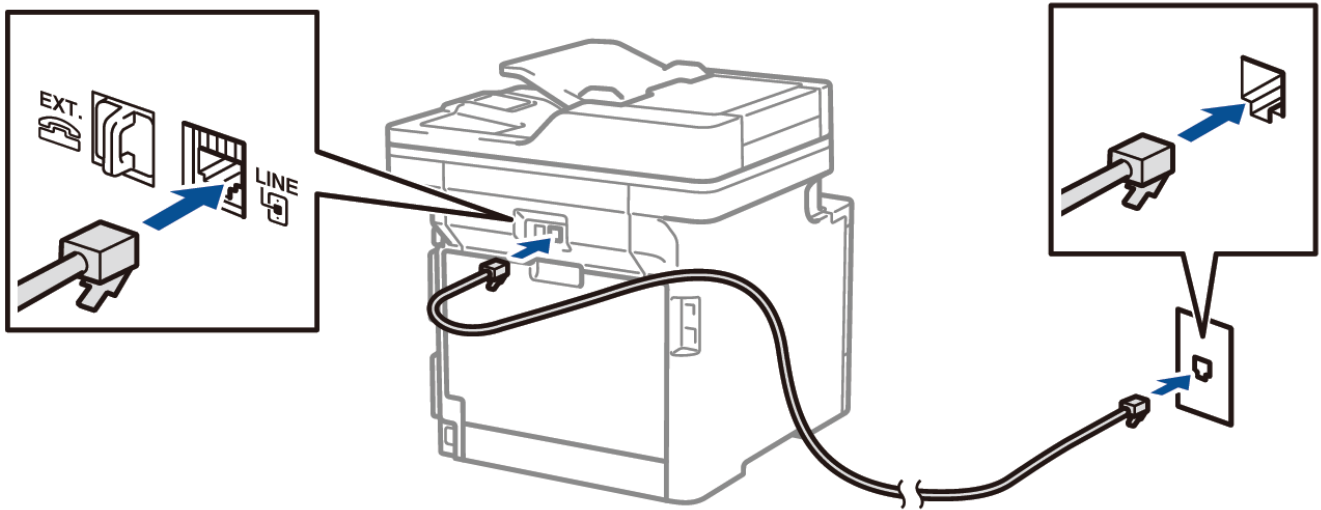


3. Connect the power cord and turn on the machine



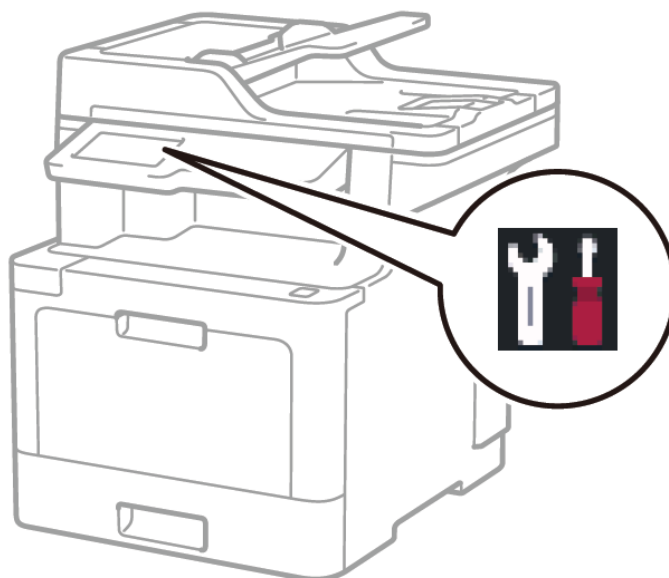
4. Connect the telephone line cord

If you do not plan to use the fax feature on this machine, go to step 5.



5. Select your language (if needed)

1. On the machine's Touchscreen, press [Settings]\* > [All Settings] > [Initial Setup] > [Local Language].
2. Press your language.
3. Press .



\* [Settings] menu is MFC-L8610CDW only.

6. Configure the machine for faxing

If you do not plan to use the fax feature on this machine, go to step 7.

**NOTE:**

- For more information on using the fax feature, see the Online User's Guide.
- Your machine is programmed to automatically receive faxes. To change this default mode, see the Online User's Guide.

**A. Set the date and time**

Press [Settings]\* > [All Settings] > [Initial Setup] > [Date & Time], and then set the date and time you want.

**B. Set the Station ID**

Press [Settings]\* > [All Settings] > [Initial Setup] > [Station ID], and then set your fax or telephone number and your name.

7. Select a device to connect to your machine

## Computer



Go to **8** and follow the instructions.

## Mobile Device



Go to **9** and follow the instructions.

### 8. Connect your computer

Brother regularly updates firmware to add features and apply bug fixes. To check for the latest firmware, visit [solutions.brother.com/up3](http://solutions.brother.com/up3)



Put the installation disc into your CD/DVD drive, or download the Full Driver & Software Package at:

For Windows®: [solutions.brother.com/windows](http://solutions.brother.com/windows)  
For Macintosh: [solutions.brother.com/mac](http://solutions.brother.com/mac)

If you are using a recently released operating system on your computer, visit the above websites for updated driver and software information.

▶ Follow the on-screen instructions and prompts.

For Windows®:  
If the Brother screen does not appear automatically, go to **Computer (This PC)**. Double-click the CD/DVD-ROM icon, and then double-click **start.exe**.

▶ Finished

**For Network Users: Important Notice for Network Security**  
The default Web Based Management password is located on the back of the machine and marked "Pwd". We recommend immediately changing the default password to use network tools/utilities securely and to protect your machine from unauthorized access.

#### Can't Connect? Check the following:



Wireless network



Wired network



USB connection

▶ Restart your wireless access point/router (if possible).

▶ Disconnect the cable.

▶ Restart your machine and computer, and then go to **8**.

▶ If still not successful, go to **9**.

▶ If still not successful, visit [support.brother.com](http://support.brother.com) for FAQs & Troubleshooting.

If still not successful, visit [support.brother.com](http://support.brother.com) for FAQs & Troubleshooting.

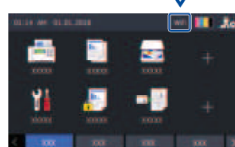
### 9. Alternative wireless setup

Even if you do not have a wireless access point/router, you can connect your device and your machine directly.

For additional wireless network support, go to [solutions.brother.com/wireless-support](http://solutions.brother.com/wireless-support)

SSID (Network Name)	
Network Key (Password)	

Press **Wi-Fi** > [Setup Wizard] > [Yes].



Select the SSID (Network Name) for your access point/router and enter the Network Key (Password).

When the wireless setup is successful, the Touchscreen displays [Connected].

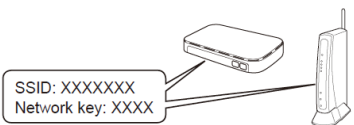
If setup is not successful, restart your Brother machine and your wireless access point/router, and repeat **9**.

#### For Computer

Go to **8** to install software.

#### For Mobile Device

Go to **10** to install apps.



If you cannot find this information, ask your network administrator or wireless access point/router manufacturer.

### 10. Print or scan using your mobile device

Your mobile device must be connected to the same wireless network as your Brother machine.

Brother SupportCenter is a mobile app that provides the latest support information for your Brother product.

Visit the App Store or Google Play™ to download.



AirPrint is available for Apple device users. You do not need to download any software to use AirPrint. For more information, see the *Online User's Guide*.



Download and install our free application **Brother iPrint&Scan** from a mobile application store, such as the App Store, Google Play™ or Microsoft® Store using your mobile device.

#### Optional apps

You can print from and scan to your mobile device using various apps.  
(USA only) For more information on apps, visit [www.brother-usa.com/connect](http://www.brother-usa.com/connect).  
For instructions, see the *Online User's Guide*.

### Optional apps

You can print from and scan to your mobile device using various apps.

(USA only) For more information on apps, visit [www.brother-usa.com/connect](http://www.brother-usa.com/connect)

For instructions, see the *Online User's Guide*.

Additional Wireless Support: [solutions.brother.com/wireless-support](https://solutions.brother.com/wireless-support)  
For FAQs, Troubleshooting, and to download software and manuals, visit [support.brother.com](https://support.brother.com)

## Documents / Resources

	<p><a href="#">brother MFC-L8610CDW All in One Color Printer</a> [pdf] User Guide MFC-L8610CDW, MFC-L8895CDW, MFC-L8900CDW, MFC-L8905CDW, All in One Color Printer</p>
---	--

[Manuals+](#).