



brother MFC-L2700D MonoChrome Laser Multi Function Printer Installation Guide

[Home](#) » [Brother](#) » brother MFC-L2700D MonoChrome Laser Multi Function Printer Installation Guide 

Contents

- [1 brother MFC-L2700D MonoChrome Laser Multi Function Printer](#)
- [2 Models](#)
- [3 Unpack the machine and check the components](#)
- [4 Remove the packing materials and install the toner cartridge](#)
- [5 Load paper in the paper tray](#)
- [6 Connect the power cord and turn on the machine](#)
- [7 Connect the machine to your computer/mobile device](#)
 - [7.1 Configuration using the CD-ROM \(Windows®\)](#)
 - [7.2 Connection Type](#)
 - [7.3 Wireless Network Connection](#)
 - [7.4 Configuration without using the CD-ROM \(Windows® without CD-ROM drive or Macintosh\)](#)
- [8 Documents / Resources](#)
- [9 Related Posts](#)



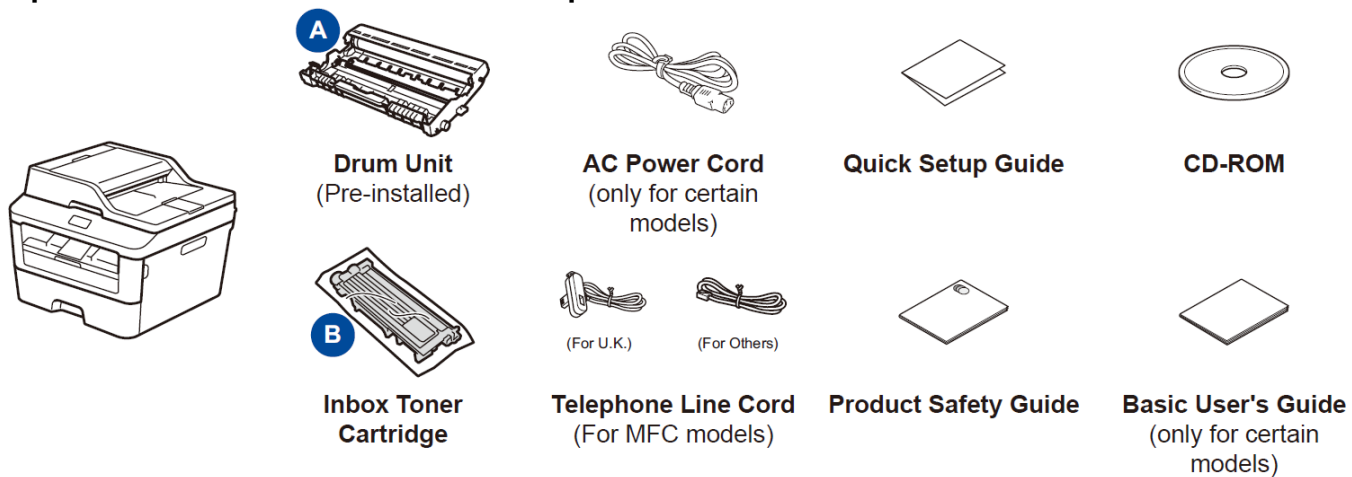
brother MFC-L2700D MonoChrome Laser Multi Function Printer



Models

- DCP-L2500D
- DCP-L2520D
- DCP-L2520DW
- DCP-L2540DN
- DCP-L2540DW
- DCP-L2541DW
- MFC-L2700D
- MFC-L2700DN
- MFC-L2700DW
- MFC-L2701D
- MFC-L2701DW
- MFC-L2703DW

Unpack the machine and check the components



Read the Product Safety Guide first, then read this Quick Setup Guide for the correct installation procedure.

NOTE:

- The components included in the box and the AC power plug may differ depending on your country.
- The illustrations in this Quick Setup Guide are based on the MFC-L2700DW.
- You must purchase the correct interface cable for the interface you want to use.

USB cable

We recommend using a USB 2.0 cable (Type A/B) that is no more than 2 metres long.

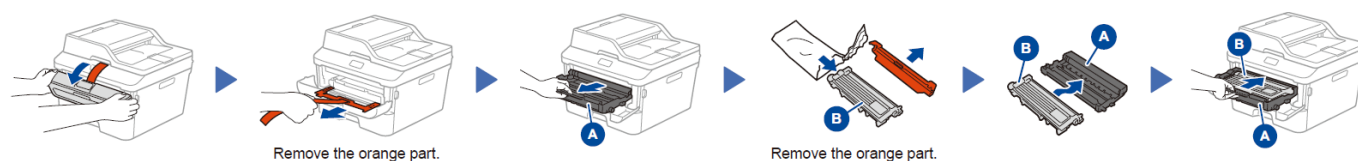
Network cable

Use a straight-through Category 5 (or greater) twisted-pair cable for 10BASE-T or 100BASE-TX Fast Ethernet Network.

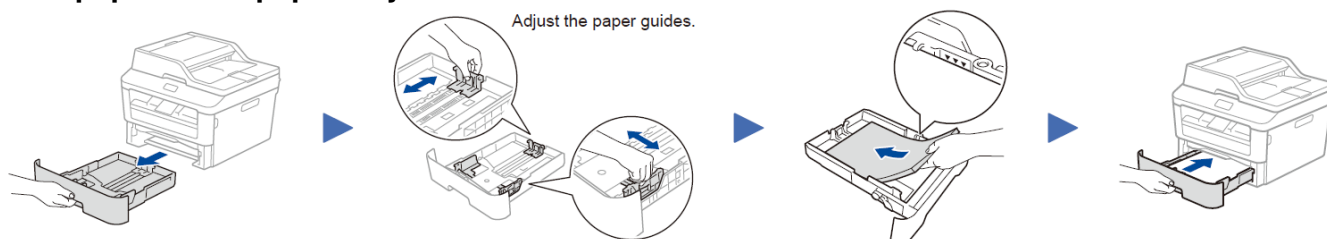
Secure Network Access

Your machine's default password is on the label on the back of the machine (preceded by "Pwd"). We strongly recommend you change it to protect your machine from unauthorised access.

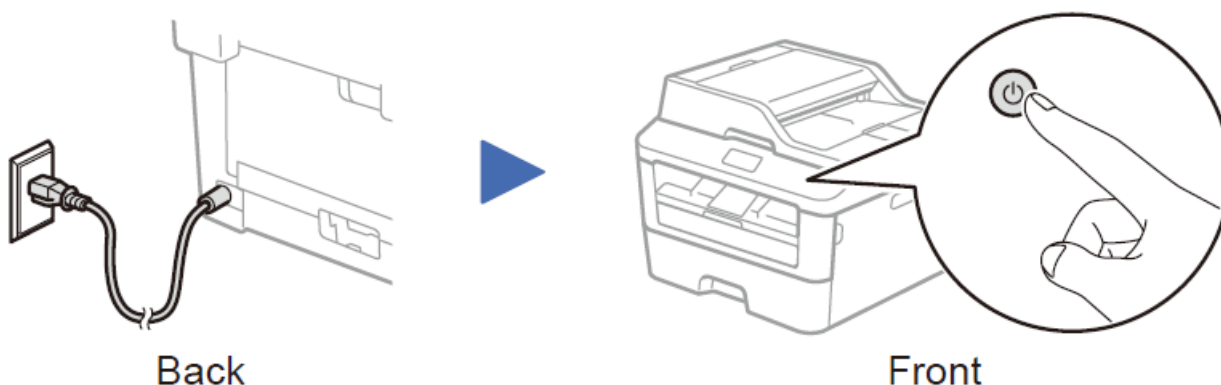
Remove the packing materials and install the toner cartridge



Load paper in the paper tray



Connect the power cord and turn on the machine



Select your country/language

(Initial setup only)

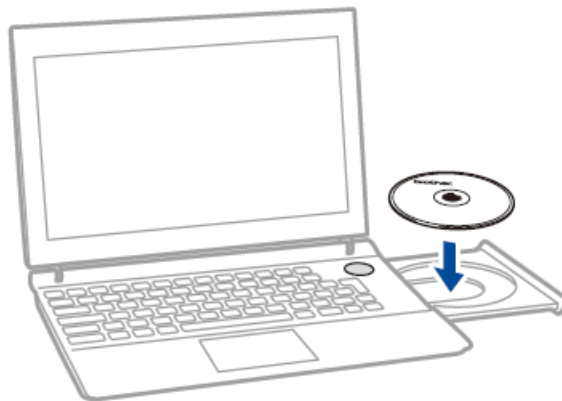
After turning on the machine, you may be required to set your country or language (depending on your machine). If required, follow the on-screen instructions.

Select your language (If needed) (Only for certain models)

1. (DCP model)
 - a. Press Menu.
 - b. Press ▲ or ▼ to display General Setup, and then press OK.
 - c. Press ▲ or ▼ to display Local Language, and then press OK. (MFC model) Press Menu, 0, 0.
2. Press ▲ or ▼ to select your language, and then press OK.
3. Press Stop/Exit.

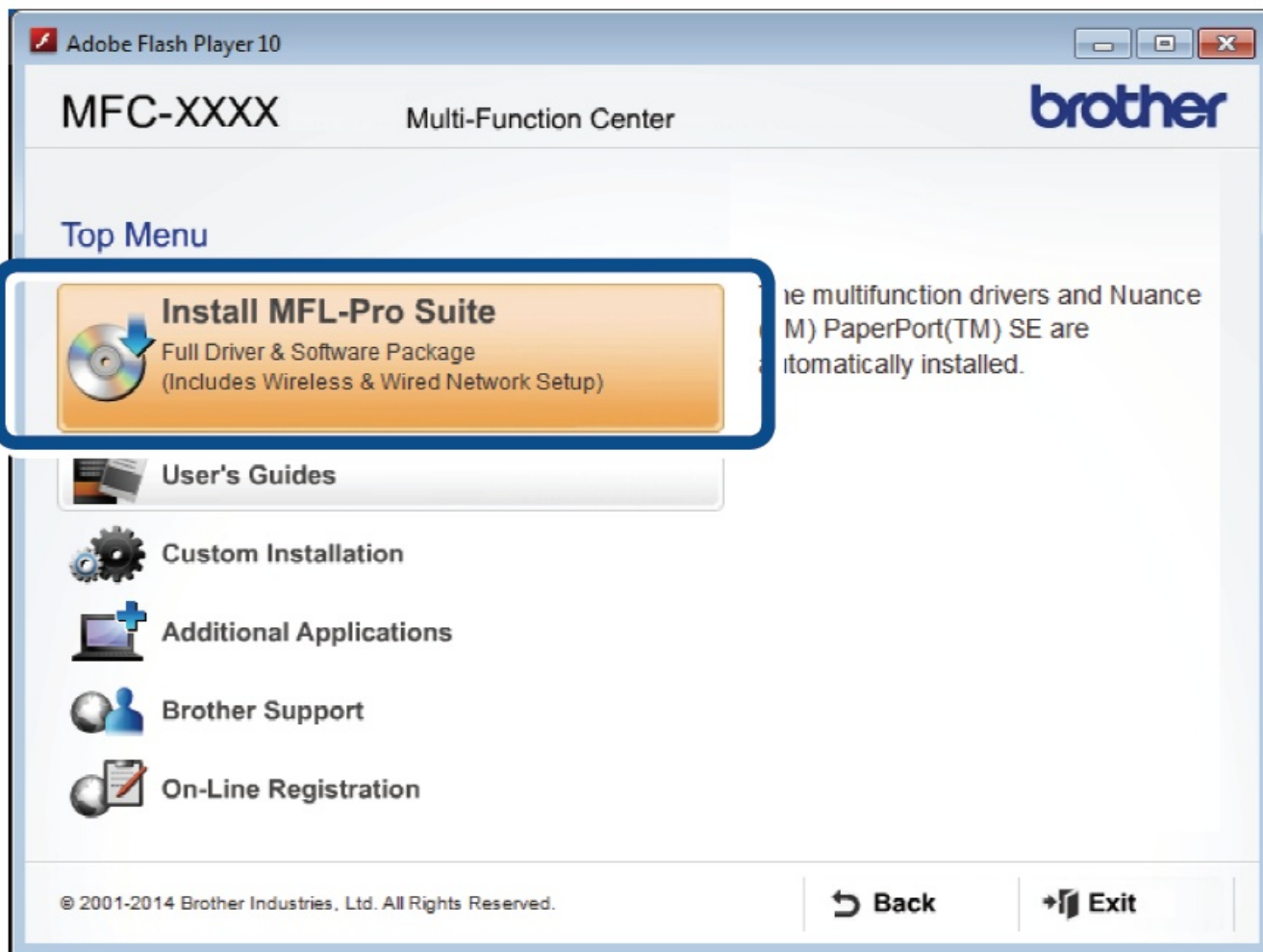
Connect the machine to your computer/mobile device

- Windows® PC with a CD-ROM drive, go to step 6A
- Windows® PC without a CD-ROM drive, go to step 6B
- Macintosh, go to step 6B
- Mobile device users with a WPS/AOSS™-supported access point/router, go to step 6C

Configuration using the CD-ROM (Windows®)

NOTE: If the Brother screen does not appear automatically, go to Computer (My Computer). (For Windows® 8: click the (File Explorer) icon on the taskbar, and then go to Computer.) Double-click the CD-ROM icon, and then double-click start.exe.

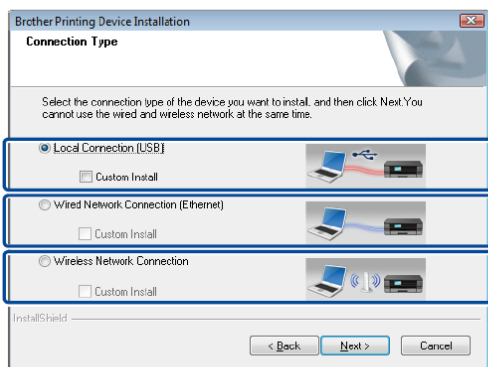
Follow the on-screen instructions to continue installation until either the Connect the machine or the Connection Type screen appears.



- Connect the machine: Follow the on-screen instructions to continue the installation.
- Connection Type:

Connection Type

Connection Type



For USB Connection

For Wired Network Connection
Connect a network cable first.

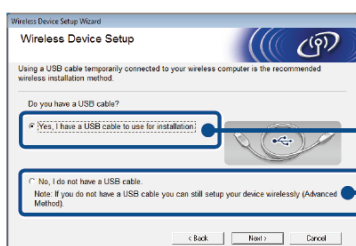
For Wireless Network Connection
We recommend preparing a USB cable to use temporarily during the wireless setup.

Follow the on-screen instructions to continue installation.

Finish

NOTE:
If connection is unsuccessful, repeat this step.

Wireless Network Connection



[Recommended]

Select this option if you have a USB cable to use temporarily for wireless setup.

Select this option if you do not have a USB cable.

Follow the on-screen instructions to continue installation.

Finish

NOTE:
If connection is unsuccessful, repeat this step.

Configuration without using the CD-ROM (Windows® without CD-ROM drive or Macintosh)

Download the full driver and software package from the Brother Solutions Center.

(For Windows®) solutions.brother.com/windows

(For Macintosh) solutions.brother.com/mac

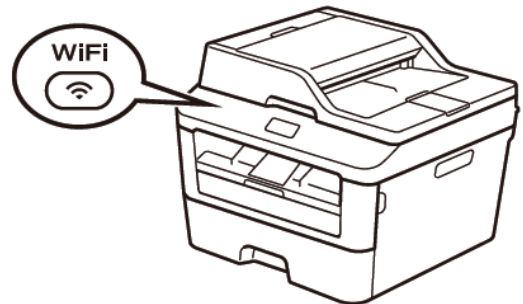
After you download the driver and software package, follow the on-screen instructions until the Connection Type screen appears. Refer to 6A Configuration using the CD-ROM (Windows®).

One-push wireless setup for mobile devices (Wireless models only)

If your wireless LAN access point/router supports automatic wireless (one-push) setup (WPS/AOSS™), you can set up your machine without using a computer.



Press the WPS or AOSS™ button on your wireless LAN access point/router.



Press the **WiFi** button on your machine.

Wireless setup is now complete.

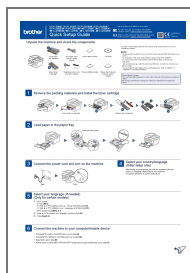
NOTE: Before you can use your machine with your mobile device, download “Brother iPrint&Scan.”

Print and scan using your mobile device

Download “Brother iPrint&Scan” to start using your machine with mobile devices.

solutions.brother.com/ips

Documents / Resources



[brother MFC-L2700D MonoChrome Laser Multi Function Printer](#) [pdf] Installation Guide
DCP-L2500D, DCP-L2520D, DCP-L2520DW, DCP-L2540DN, DCP-L2540DW, DCP-L2541 DW,
MFC-L2700D, MFC-L2700DN, MFC-L2700DW, MFC-L2701 D, MFC-L2701 DW, MFC-L2703D
W, MFC-L2700D MonoChrome Laser Multi Function, MonoChrome Laser Multi Function