

brother MFC J6935DW Multi Function Printer



brother MFC-J6935DW Multi Function Printer User Guide

[Home](#) » [Brother](#) » brother MFC-J6935DW Multi Function Printer User Guide 

Contents

- [1 Brother MFC-J6935DW Multi Function Printer](#)
- [2 Product Information](#)
- [3 Specifications](#)
- [4 WHAT IN THE BOX](#)
- [5 Connect the power cord](#)
- [6 Install the inbox ink cartridges](#)
- [7 Machine settings](#)
- [8 Connect the telephone line cord](#)
- [9 Alternative wireless setup](#)
- [10 Print or scan using your mobile device](#)
- [11 FAQ](#)
- [12 Documents / Resources](#)
 - [12.1 References](#)
- [13 Related Posts](#)

brother®

Brother MFC-J6935DW Multi Function Printer



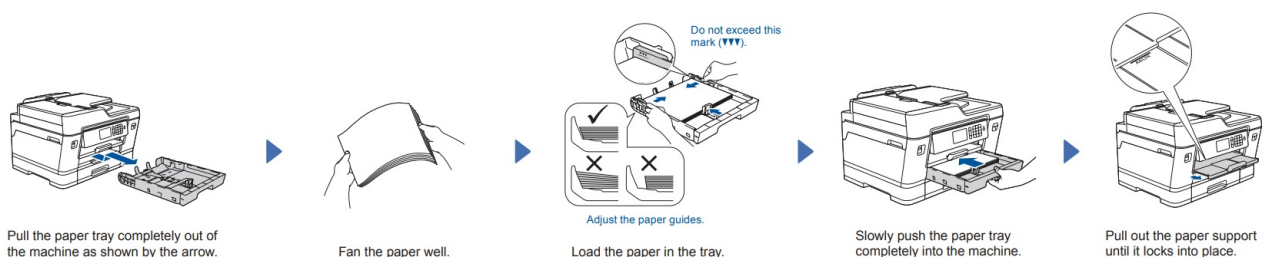
Product Information

The MFC-J3930DW, MFC-J6930DW, and MFC-J6935DW are multi-function printers manufactured by Brother. These printers offer a range of features including printing, copying, scanning, and faxing capabilities. They are designed to be user-friendly and provide high-quality results for both home and office use.

Specifications

- **Model:** MFC-J3930DW / MFC-J6930DW / MFC-J6935DW
- **Printing Technology:** Inkjet print, Copy, Scan, Fax
- **Max Print Resolution:** Up to 4800 x 1200 dpi
- **Print Speed:** Up to 22 pages per minute (black and color)
- **Paper Sizes:** A4, Letter, Legal, Executive, A5, A6
- **Connectivity:** USB, Ethernet, Wi-Fi
- **Display:** Touchscreen
- **Ink Cartridges:** Compatible with Brother ink cartridges

WHAT IN THE BOX



Unpack the machine and check the components

The components included in the box may differ depending on your country

NOTE

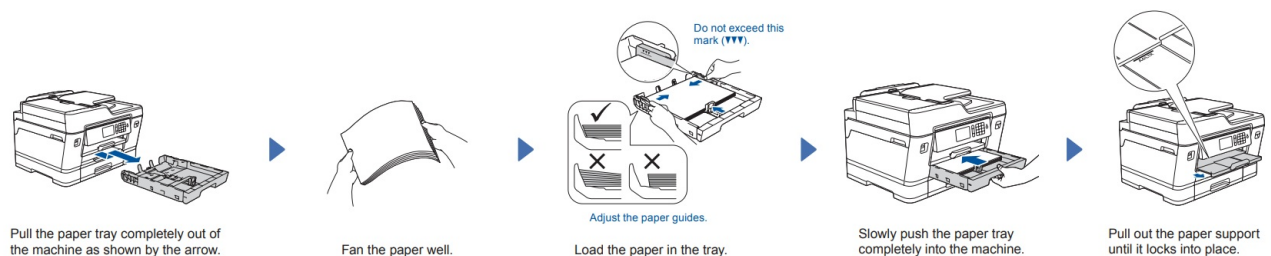
- Most of the illustrations in this Quick Setup Guide show the MFC-J6930DW.
- Save all packing materials and the box in case for any reason you must ship your machine.
- You must purchase the correct interface cable for the interface you want to use.

USB cable

- We recommend using a USB 2.0 cable (Type A/B) that is no more than 2 meters long.
- Ethernet (Network) cable
- Use a straight-through Category 5 (or greater) twisted-pair cable for a 10BASE-T or 100BASE-TX Fast Ethernet Network.

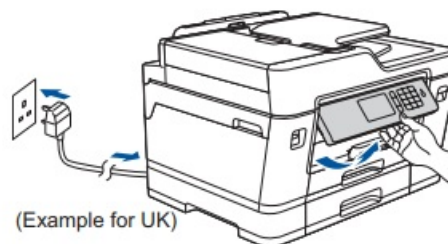
Load plain A4 paper

For loading other sizes of paper, see Paper Handling in the Reference Guide.



Connect the power cord

Connect the power cord. The machine will power on automatically.



NOTE

You can adjust the control panel angle to read the Touchscreen more easily.
Select your country or language (Initial setup only)

After turning the machine on, you may need to set your country or language (depending on your machine).
If required, follow the Touchscreen instructions.

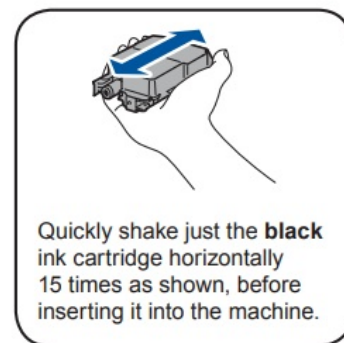
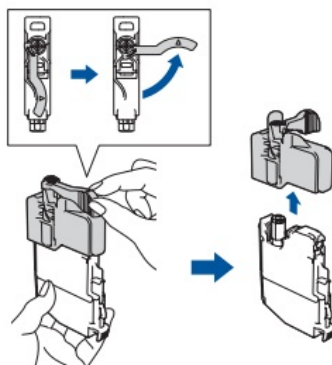
Set the date and time

Follow the Touchscreen instructions to set the date and time.

Install the inbox ink cartridges



Open the ink cartridge cover, and then remove the orange protective part from the machine.



Quickly shake just the **black** ink cartridge horizontally 15 times as shown, before inserting it into the machine.

Follow the Touchscreen instructions to unpack and install the ink cartridges
The machine will prepare the ink tube system for printing

NOTE



- Follow the Touchscreen instructions to store the orange protective part inside the machine.
- If you must transport the machine, remove the ink cartridges and replace this part.

Machine settings

When the machine has finished the initial cleaning process, follow the Touchscreen instructions to configure the machine's settings.

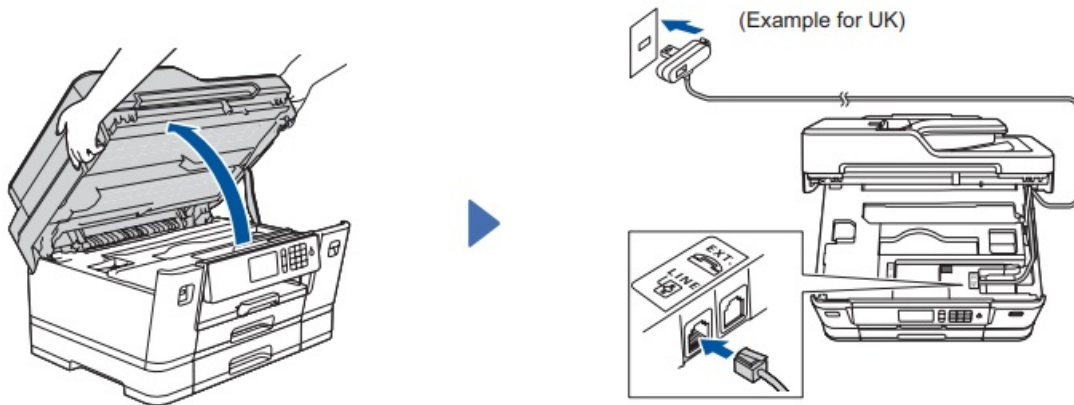
- Check print quality
- Configure the tray settings
- View operation tips
- Set Brother LCD Message defaults
- Print the installation sheet

Select your language (if needed and only for certain models)

- Press  [Settings] > [All Settings] > [Initial Setup] > [Local Language].
- Press your language.
- Press .

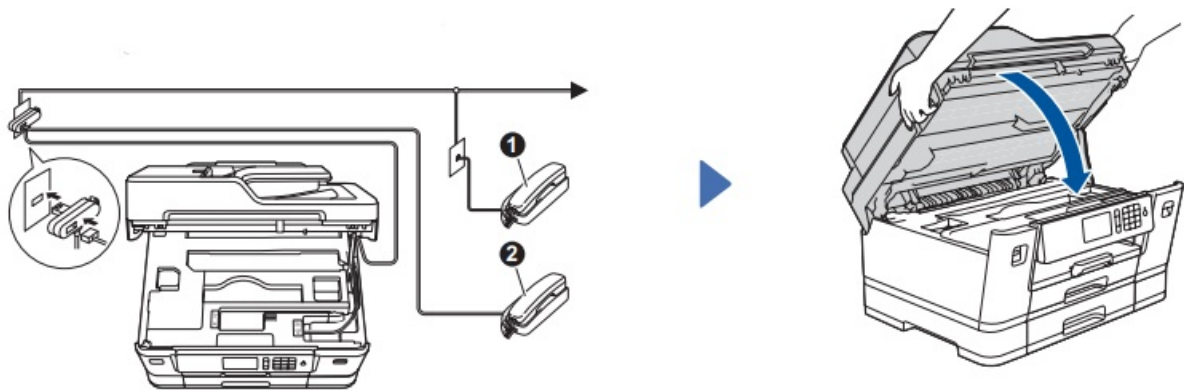
Connect the telephone line cord

If you are not using your machine as a fax, go to



- Lift the scanner cover.
- Connect the telephone line cord.
- Use the socket marked LINE and guide the cord out the back of the machine

NOTE: If you are sharing one telephone line with an external telephone, connect it as shown below.



- Extension telephone
- External telephone
- Close the scanner cover.

Connect your computer



Put the installation disc into your CD/DVD drive, or download the Full Driver & Software Package at:

For Windows®: solutions.brother.com/windows

For Macintosh: solutions.brother.com/mac

If you are using a recently released operating system on your computer, visit the above websites for updated driver and software information.

Follow the on-screen instructions and prompts.

For Windows®:

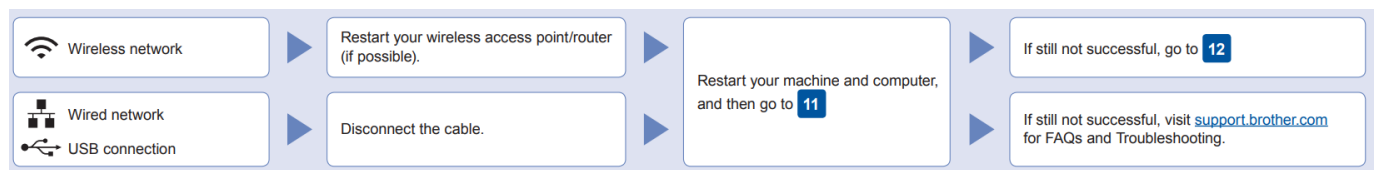
- If the Brother screen does not appear automatically, go to Computer (My Computer/This PC).
- Double-click the CD/DVD-ROM icon, and then double-click start.exe.

For Macintosh

- For full driver functionality, we recommend choosing the CUPS driver when adding a printer.
- Brother regularly updates firmware to add features and apply bug fixes.

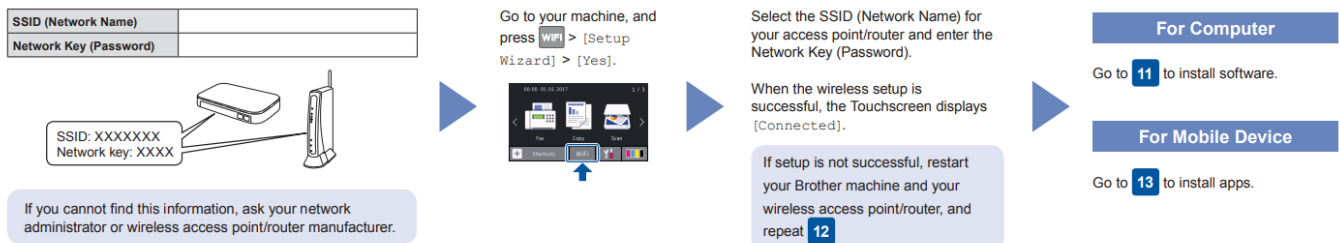
To check for the latest firmware, visit solutions.brother.com/up2.

Can't Connect? Check the following



Alternative wireless setup

Find your SSID (Network Name) and Network Key (Password) on your wireless access point/router and write them in the table provided below.



If you cannot find this information, ask your network administrator or wireless access point/router manufacturer. Even if you do not have a wireless access point/router, you can connect your device and your machine directly. For additional wireless network support, go to solutions.brother.com/wireless-support.

Print or scan using your mobile device

Download and install our free application “Brother iPrint&Scan” from a mobile application store, such as the App Store, Google Play™ or Windows Phone® Store using your mobile device.



NOTE: Your mobile device and machine must be connected to the same wireless network.



Brother SupportCenter is a mobile app that provides the latest support information for your Brother product. Visit the App Store or Google Play™ to download.

Finished

Optional apps

- You can print from and scan to your mobile device using various apps.
- For instructions, see the Online User's Guide.

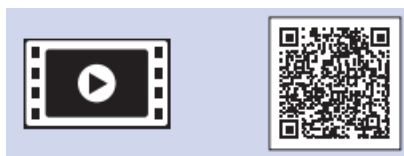
Additional Wireless Support: solutions.brother.com/wireless-support



For FAQs, Troubleshooting, and to download software and manuals, visit support.brother.com.

Watch our FAQ videos for help with setting up your Brother machine.

solutions.brother.com/videos











FAQ

- **Q: Where can I find the latest manuals for my Brother printer?**
 - A: The latest manuals for your Brother printer can be found on the Brother Solutions Center website at solutions.brother.com/manuals.
- **Q: What type of cable should I use for connecting the printer to my computer?**
 - A: We recommend using a USB 2.0 cable (Type A/B) that is no more than 2 meters long.
- **Q: How should I connect my printer to a network?**
 - A: To connect your printer to a network, use a straight-through Category 5 (or greater) twisted-pair Ethernet cable for 10BASE-T or 100BASE-TX Fast Ethernet Network.

Documents / Resources

	<p>brother MFC-J6935DW Multi Function Printer [pdf] User Guide MFC-J6935DW Multi Function Printer, MFC-J6935DW, Multi Function Printer, Function Printer, Printer</p>
---	---

References

-  [Brother Solutions Center](#)
-  [Brother Solutions Center](#)
-  [Brother Solutions Center](#)
-  [Brother Solutions Center](#)
-  [Brother Solutions Center](#)
-  [Brother Solutions Center](#)
-  [Australia | Brother support website](#)
-  [Manual-Hub.com - Free PDF manuals!](#)
- [User Manual](#)

Manuals+, Privacy Policy

This website is an independent publication and is neither affiliated with nor endorsed by any of the trademark owners. The "Bluetooth®" word mark and logos are registered trademarks owned by Bluetooth SIG, Inc. The "Wi-Fi®" word mark and logos are registered trademarks owned by the Wi-Fi Alliance. Any use of these marks on this website does not imply any affiliation with or endorsement.