



brother MFC-J6555DWXL Multifunction Printer User Guide

[Home](#) » [Brother](#) » brother MFC-J6555DWXL Multifunction Printer User Guide 

Contents

- 1 brother MFC-J6555DWXL Multifunction Printer
- 2 Unpack the machine and check the components
- 3 Load plain A4 paper
- 4 Connect the power cord
- 5 Select your country or language
- 6 Install the inbox ink cartridges
- 7 Set the date and time
- 8 Check the print quality
- 9 Adjust the print alignment (recommended)
- 10 Machine settings
- 11 Select your language (if needed)
- 12 Connect the telephone line cord
- 13 Connect your computer or mobile device to your machine
- 14 Setup Finished
- 15 Manual wireless setup
- 16 Documents / Resources
 - 16.1 References
- 17 Related Posts



brother MFC-J6555DWXL Multifunction Printer



Unpack the machine and check the components

Remove the protective tape or film covering the machine and the supplies. The components included in the box may differ depending on your country.

- Most of the machine illustrations in this Quick Setup Guide show the MFC-J6940DW.
- The images in this guide are for illustration purposes only and may differ from the actual products.

- **NOTE**

Save all packing materials and the box in case you must ship your machine.

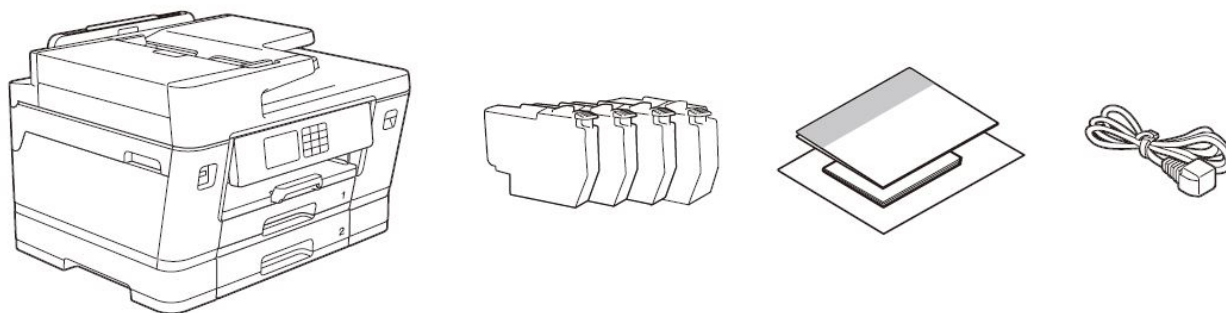
- You must purchase the correct interface cable for the interface you want to use.

USB cable

Use a USB 2.0 cable (Type A/B) that is no more than 5 meters long.

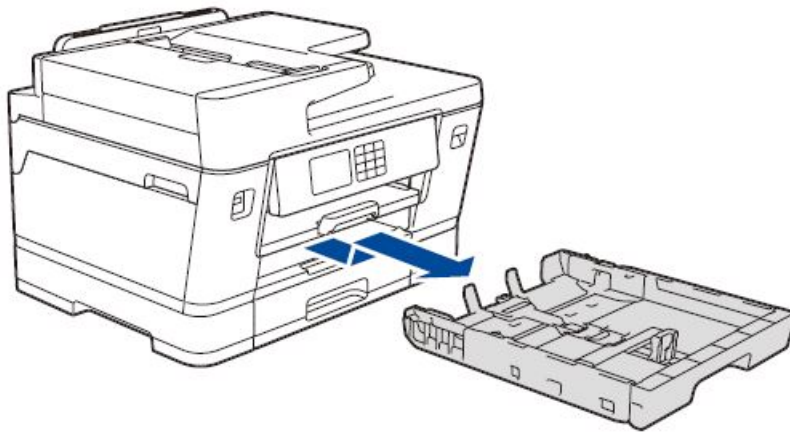
Ethernet (Network) cable

Use a straight-through Category 5 (or greater) twisted-pair cable for a 10BASE-T or 100BASE-TX Fast Ethernet Network.

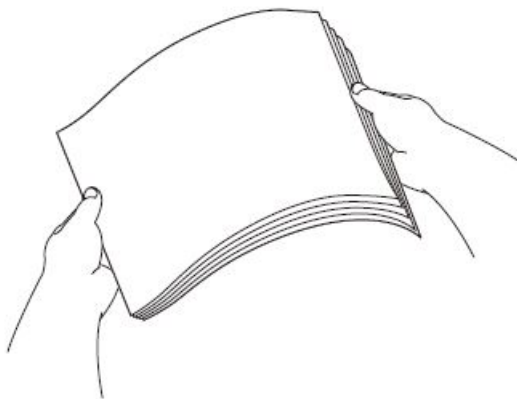


Load plain A4 paper

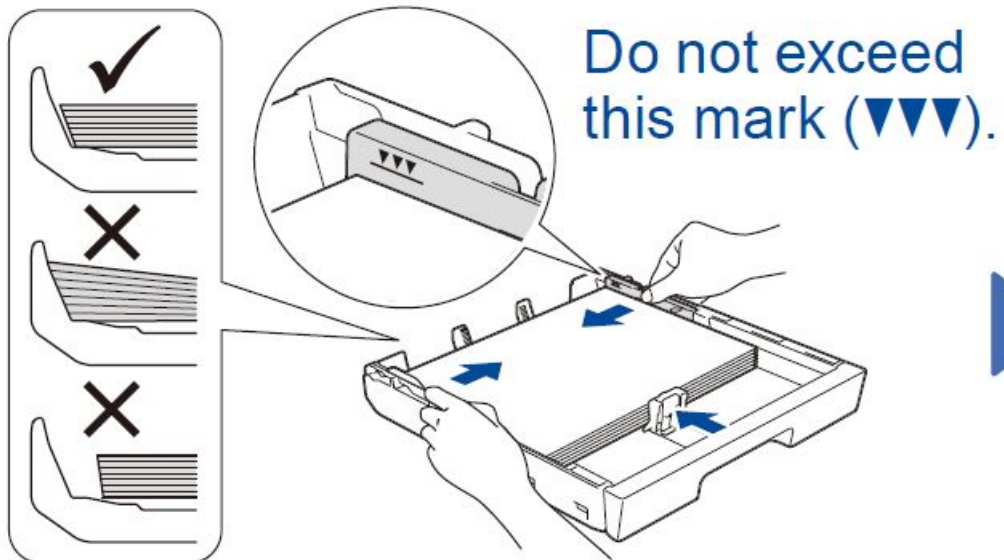
After finishing the machine setup, you can change the paper type or size. For more information about paper handling, see the Online User's Guide at support.brother.com/manuals.



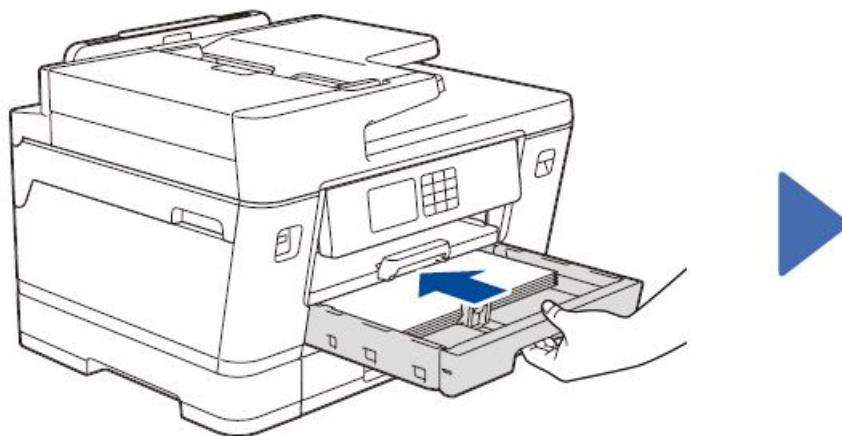
Pull the paper tray completely out of the machine as shown by the arrow.



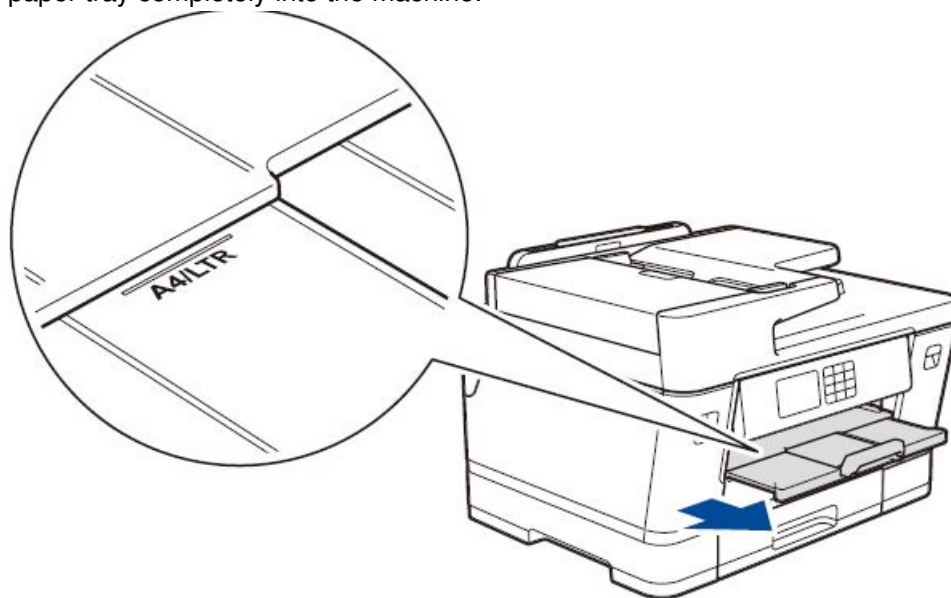
Fan the paper well.



Load the paper in the tray and adjust the paper guides.



Slowly push the paper tray completely into the machine.

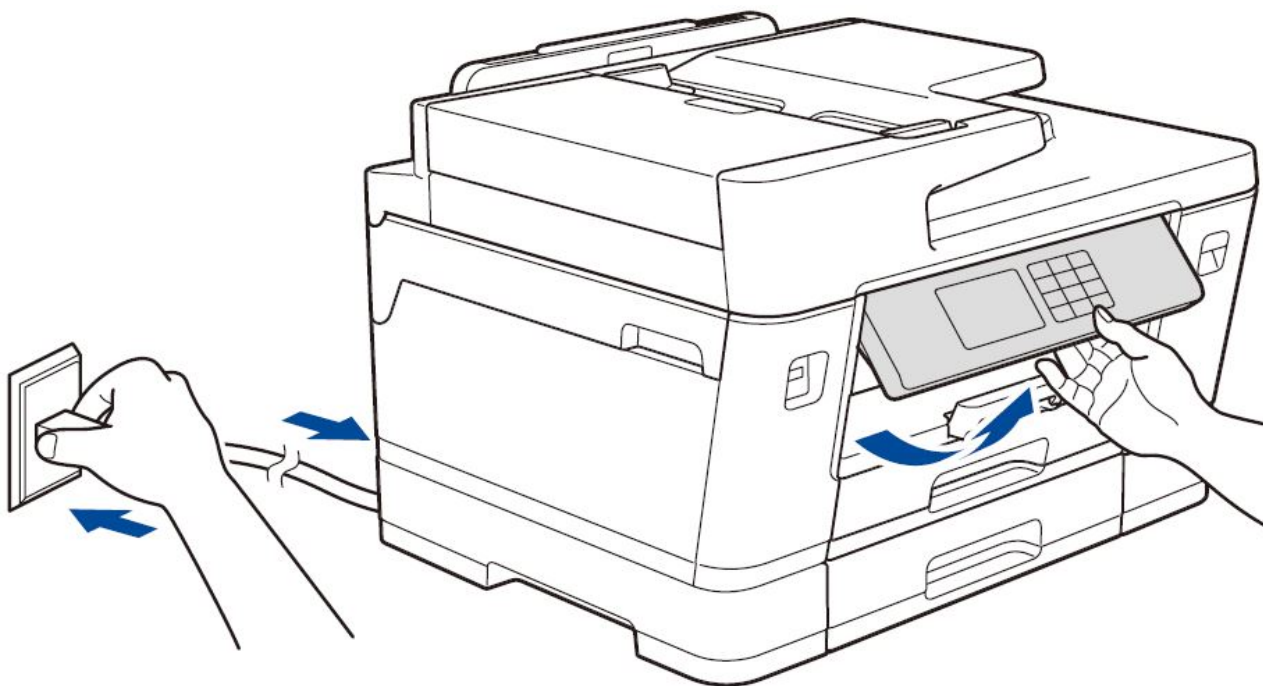


Pull out the paper support until it locks into place.

Connect the power cord

NOTE

You can adjust the control panel angle to read the LCD more easily.



Select your country or language

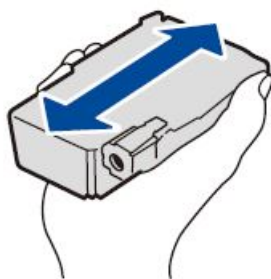
After turning the machine on, you may need to set your country or language (depending on your machine). If required, follow the LCD instructions.

Install the inbox ink cartridges

Open the ink cartridge cover.

MFC-J3540DW / MFC-J3940DW / MFC-J6540DW / MFC-J6740DW / MFC-J6940DW:

Remove the orange protective part from the machine. Follow the LCD instructions to store the orange protective part inside the machine. If you must transport the machine, remove the ink cartridges and replace this part.



Quickly shake just the **black** ink cartridge horizontally 15 times as shown, before inserting it into the machine.

Follow the LCD instructions to install the ink cartridges. Close the ink cartridge cover. The machine will prepare the ink tube system for printing.

NOTE

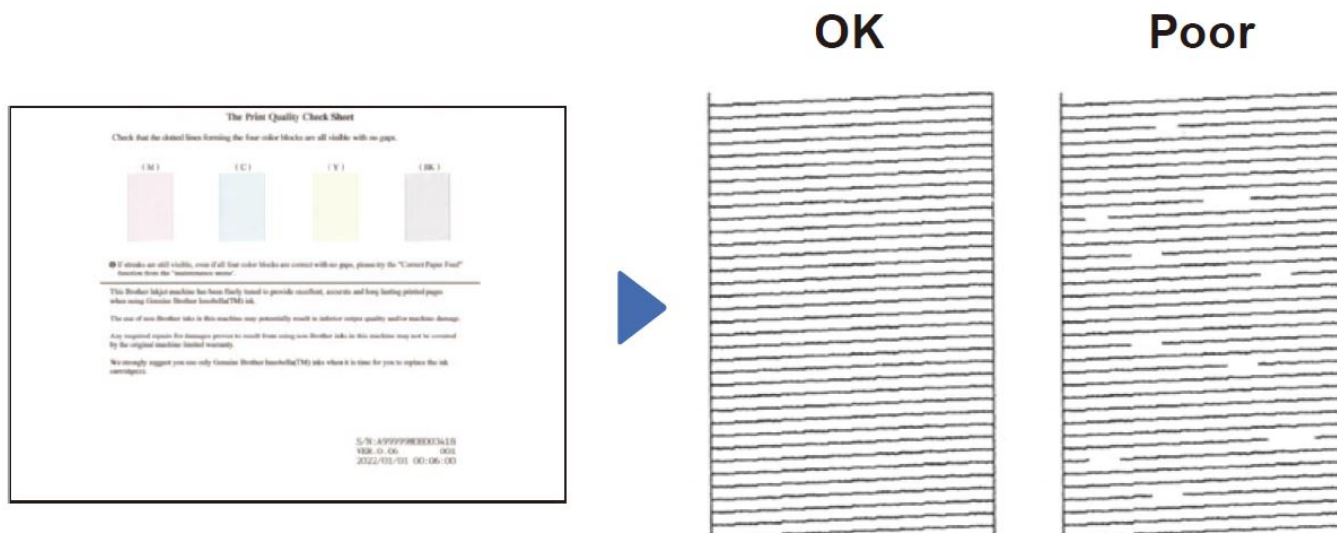
The first time you install a set of ink cartridges the machine will use an amount of ink to fill the ink delivery tubes for high quality printouts. This process will only happen once.

Set the date and time

Follow the LCD instructions to set the date and time. After setting the date and time, you can set the Brother LCD Message defaults.

Check the print quality

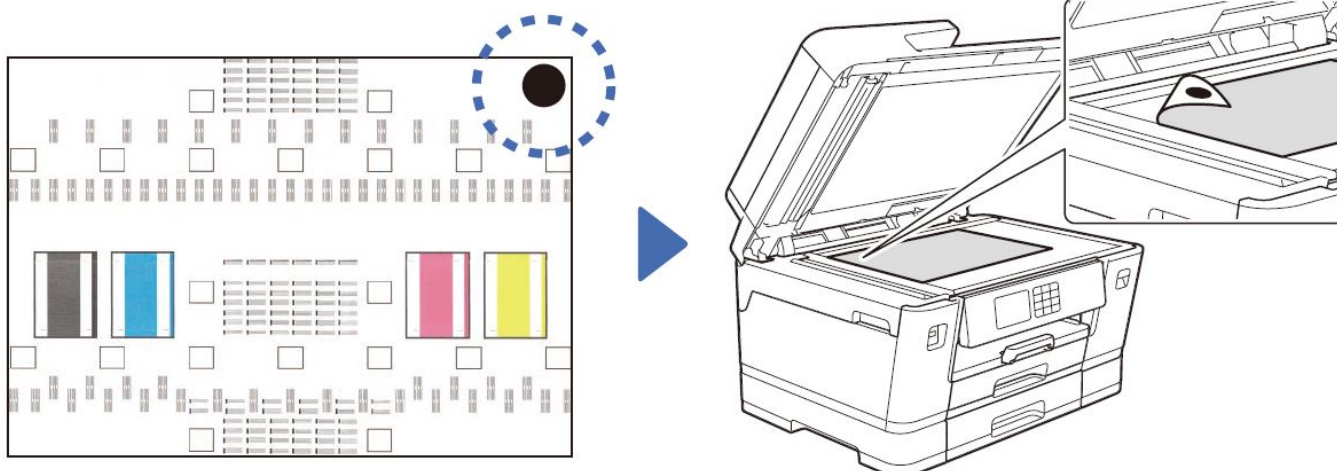
Follow the LCD instructions, and then press [Start]. The machine prints the Print Quality Check Sheet.



Follow the LCD instructions and check the quality of the four colour blocks on the sheet, and then start the cleaning procedure if required.

Adjust the print alignment (recommended)

To adjust the print alignment before using your machine, press [Start].



Follow the LCD instructions to print the Adjustment Sheet. The black circle mark is located in the upper right corner of the sheet. Place the Adjustment Sheet face down on the scanner glass. Make sure the black circle is in the upper left corner of the scanner glass.

Follow the LCD instructions and complete adjusting the alignment. When finished, remove the Adjustment Sheet from the scanner glass.





Machine settings

Follow the LCD instructions to configure the machine settings.

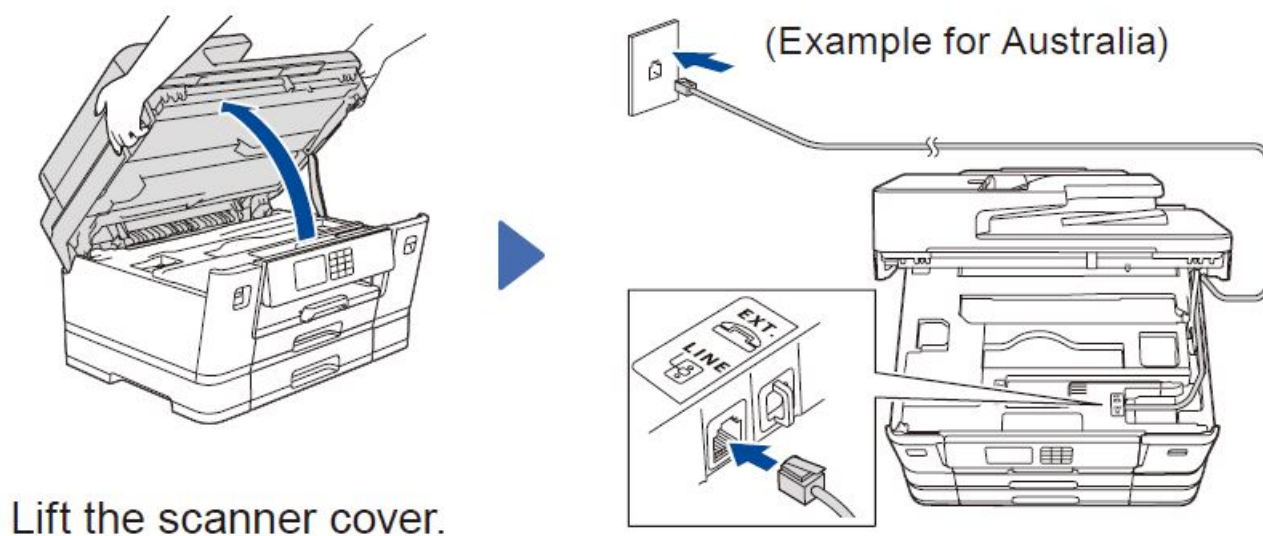
- Configure the tray settings and check the paper orientation information (not available on all models).
- Check the software installation information.

Select your language (if needed)

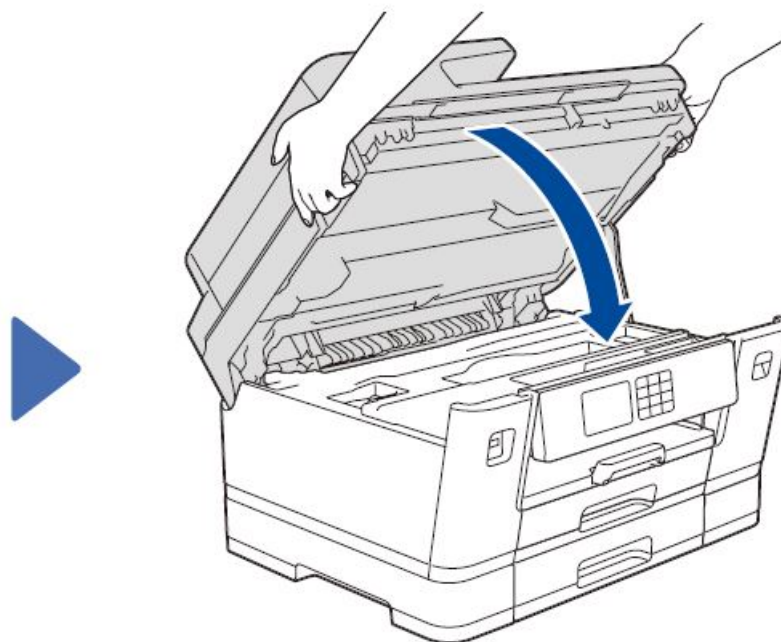
1. Press  [Settings] > [All Settings] > [Initial Setup] [Local Language].
2. Press your language.
3. Press .

Connect the telephone line cord

If you are not using your machine as a fax, go to 12 . For more information on using the fax feature, see the Online User's Guide.



Connect the telephone line cord. Use the socket marked LINE and guide the cord out the back of the machine.



Close the scanner cover.

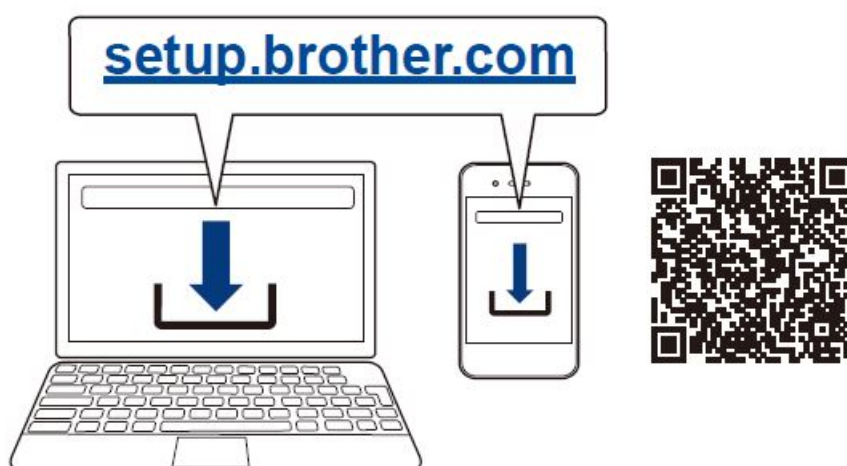
Connect your computer or mobile device to your machine

Follow these steps to complete the setup using one of the connection types available on your machine.

Visit setup.brother.com to download and install Brother software.

NOTE

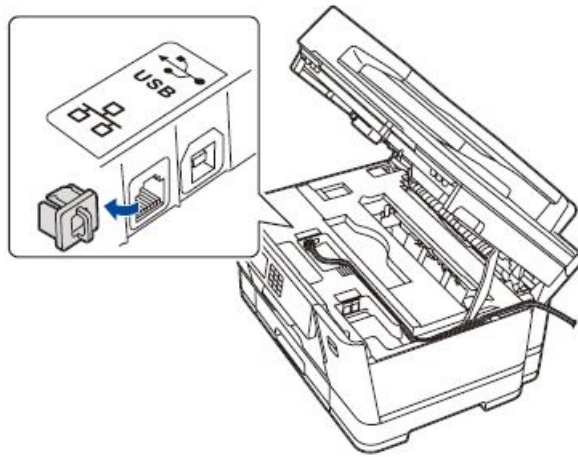
For Windows only, CD installation is also available (for some countries).



Follow the on-screen instructions and prompts.

NOTE

For Wired Network Connection and USB Connection, locate the correct port (based on the cable you are using) inside the machine as shown.



Setup Finished

You can now print and scan using your machine. To check for the latest firmware, visit support.brother.com/up7.

Important Notice for Network Security:

The default password to manage this machine's settings is located on the back of the machine and marked "Pwd". We recommend immediately changing the default password to protect your machine from unauthorised access.

Can't Connect? Check the following:



Wireless network



Restart your wireless access point/
router (if possible).



Restart your machine and
computer, and then go to **12**.



If still not successful, go to **13**.



Wired network



Disconnect the cable.



Restart your machine and
computer, and then go to **12**.



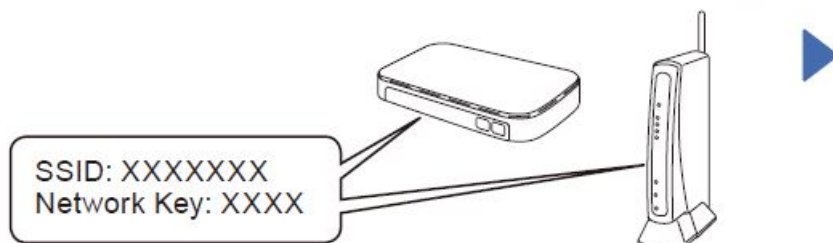
If still not successful, visit support.brother.com
for FAQs and Troubleshooting.

Manual wireless setup

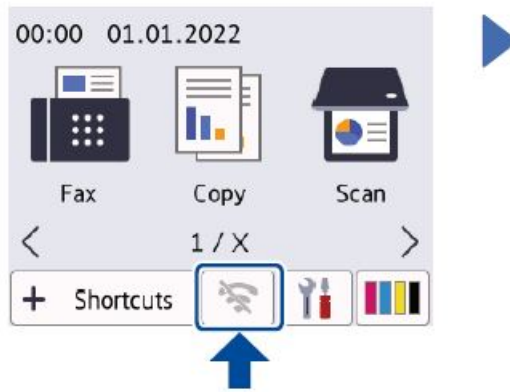
If the wireless setup is not successful, try to set up the connection manually.

Find your SSID (Network Name) and Network Key (Password) on your wireless access point/router and write them in the table provided below.

SSID (Network Name)	
Network Key (Password)	



If you cannot find this information, ask your network administrator or wireless access point/router manufacturer.



Select the SSID (Network Name) for your wireless access point/router and enter the Network Key (Password). When the wireless setup is successful, the LCD displays **[Connected]**. If the setup is not successful, restart your Brother machine and your wireless access point/router, and repeat 13.

▶ Go to **12** to install software.

For detailed machine information and product specifications, see the Online User's Guide at support.brother.com/manuals.

© 2021 Brother Industries, Ltd.
All rights reserved.

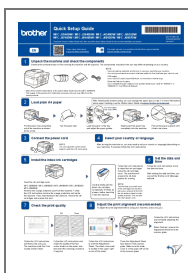


Video setup instructions: support.brother.com/videos








The latest manuals are available at the Brother support website:
support.brother.com/manuals

Documents / Resources



brother MFC-J6555DWXL Multifunction Printer [pdf] User Guide
MFC-J6555DWXL Multifunction Printer, MFC-J6555DWXL, Multifunction Printer, Printer

References

-  setup.brother.com | [Official Machine setup site](#) | [Brother](#)
-  [United States](#) | [Brother support website](#)
-  [Brother Solutions Center](#)
-  [Brother Solutions Center](#)
-  [Brother Solutions Center](#)