



brother DCPL1630W Multi Function Printer User Guide

[Home](#) » [Brother](#) » brother DCPL1630W Multi Function Printer User Guide 

brother



D036JX00
UK
Version 0
Quick Setup Guide
DCP-L1630W/DCP-L1632W

Contents

- 1 DCPL1630W Multi Function Printer
- 2 Unpack the machine and check the components
- 3 Remove the packing materials and install the toner cartridge
- 4 Load paper in the paper tray
- 5 Connect the power cord and turn the machine on
- 6 Select your country/language (Initial setup only)
- 7 Select your language (if needed)
- 8 Connect your computer or mobile device to your machine
- 9 Manual wireless setup (Wireless models)
- 10 Documents / Resources
 - 10.1 References

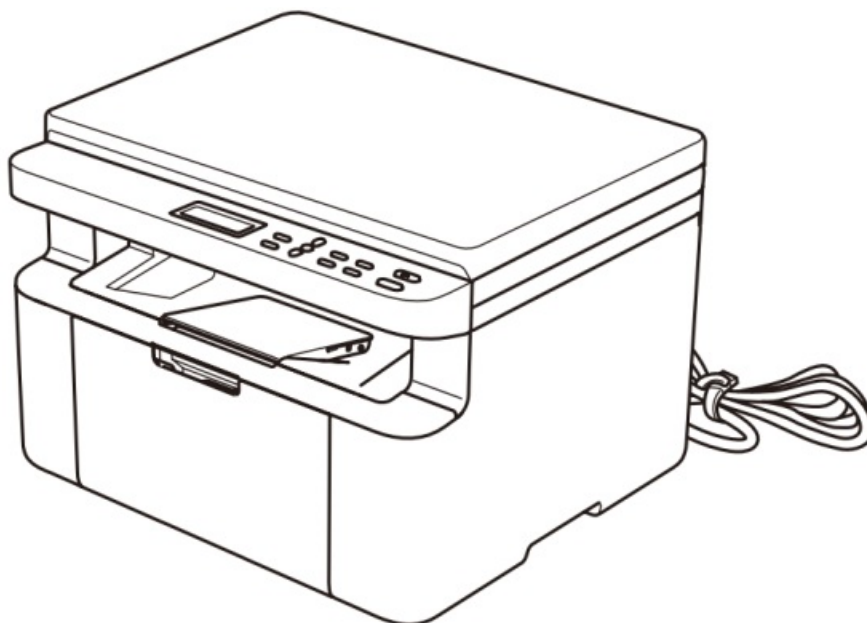
DCPL1630W Multi Function Printer

Read the Product Safety Guide first, then read this Quick Setup Guide for the correct installation procedure. Not all models are available in all countries.

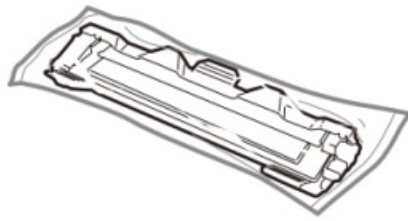


The latest manuals are available on the Brother support website: support.brother.com/manuals

Unpack the machine and check the components



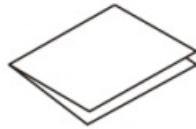
Remove the protective tape or film covering the machine and the supplies.



Toner Cartridge



A5 Paper Long Edge Support



Quick Setup Guide



Product Safety Guide

NOTE:

- The components included in the box may differ depending on your country.
- The available connection interfaces vary depending on the model.
- If you use a wired connection, you must purchase the correct cable for the interface you want to use.

• **USB cable**

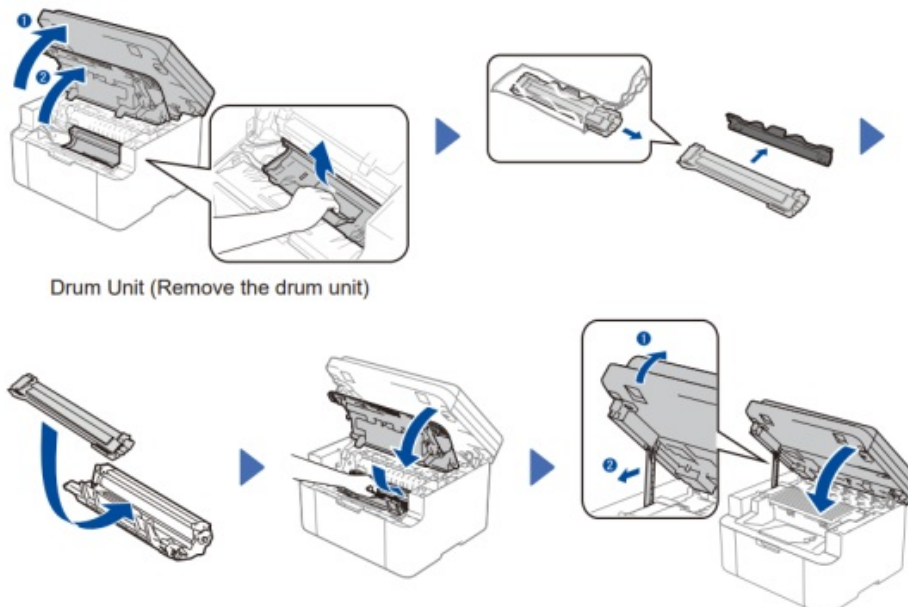
We recommend using a USB 2.0 cable (Type A/B) that is no more than 2 metres long.

• **Network cable**

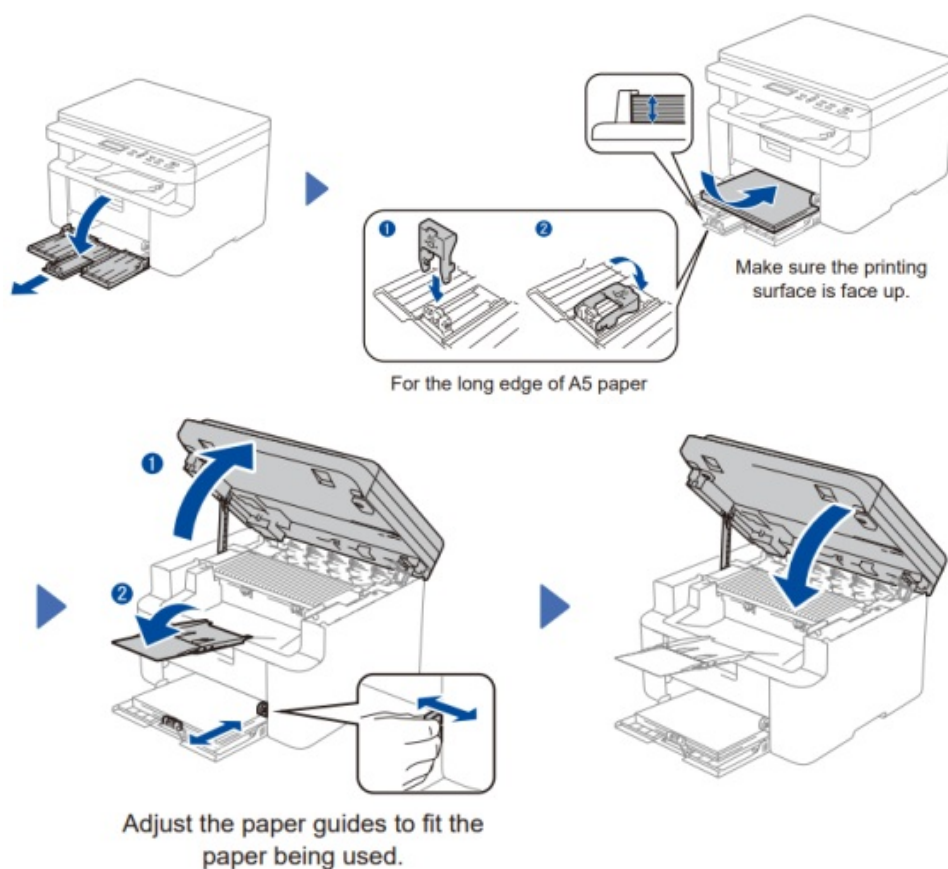
Use a straight-through Category 5 (or greater) twisted-pair cable.

- The screens and images in this Quick Setup Guide show the DCP-L1632W.
- Brother aims to reduce waste and save both raw materials and the energy required to produce them.
- Read more about our environmental work at www.brotherearth.com.
- Save all packing materials and the box in case you need to ship your machine.

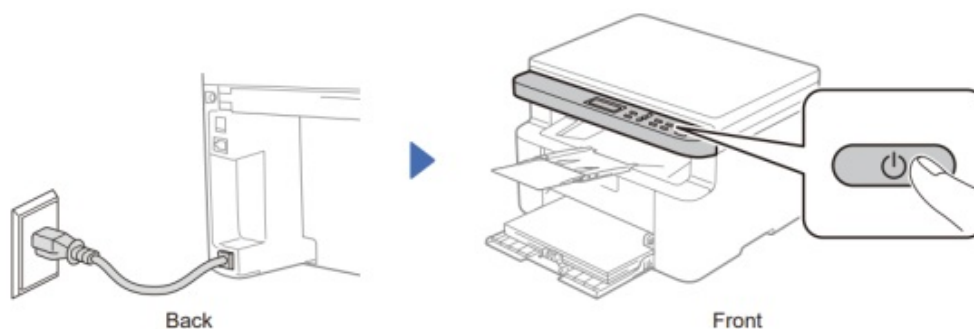
Remove the packing materials and install the toner cartridge



Load paper in the paper tray



Connect the power cord and turn the machine on



Select your country/language (Initial setup only)

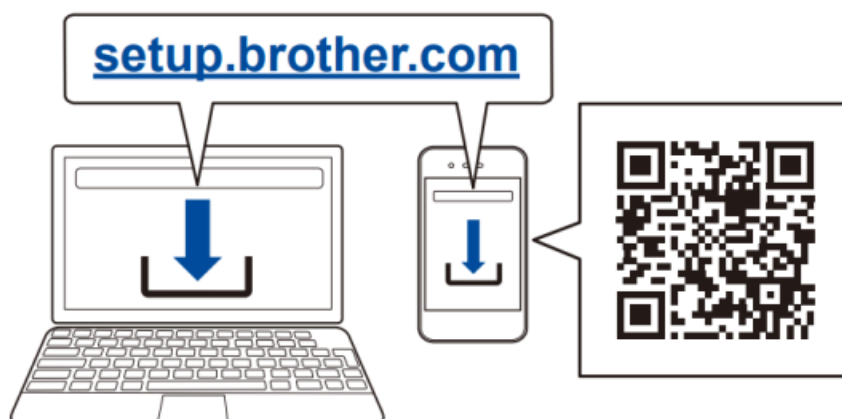
After turning the machine on, you may be required to set your country or language (depending on your machine). If required, follow the on-screen instructions.

Select your language (if needed)

- Press Menu.
- Press ▲ or ▼ to display [Initial Setup], and then press OK.
- Press ▲ or ▼ to display [Local Language], and then press OK.
- Press ▲ or ▼ to select your language, and then press OK.
- Press Stop/Exit.

Connect your computer or mobile device to your machine

Follow these steps to complete the setup using one of the connection types available on your machine.
Visit setup.brother.com to download and install Brother software.



Follow the on-screen instructions and prompts.

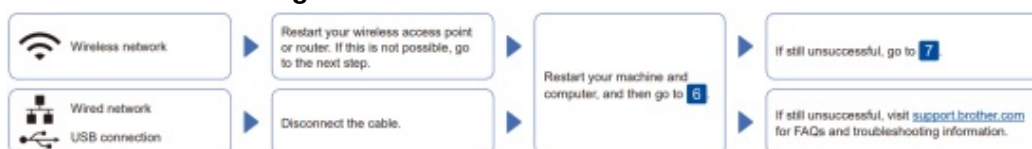
Setup Finished

You can now print and scan using your machine.

Important Notice for Network Security:

The default password to manage this machine's settings is located on the back of the machine and marked "Pwd".
We recommend immediately changing the default password to protect your machine from unauthorised access.

Can't Connect? Check the following:



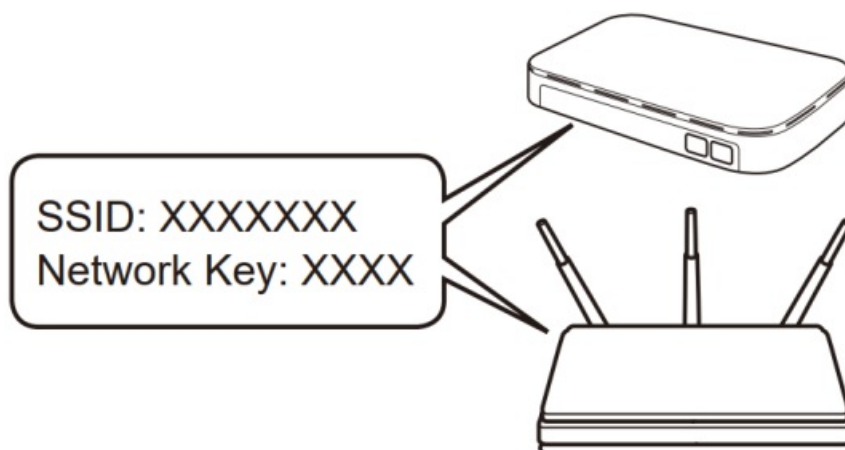
Manual wireless setup (Wireless models)

If the wireless setup is unsuccessful, set up the connection manually.

Find your SSID (Network Name) and Network

Key (Password) on your wireless access point or router and write them in the table provided below.

SSID (Network Name)	
Network Key (Password)	



Press Menu, and then select
[Network] >
[WLAN (Wi-Fi)] >
[Find Network].
Follow the LCD instructions

If you cannot find this information, ask your network administrator or wireless access point or router manufacturer. Select the SSID (Network Name) for your access point or router and enter the Network Key (Password).

Press and hold (or press repeatedly)  or  to select one of the following characters:

0123456789abcdefghijklmnopqrstuvwxyz

ABCDEFGHIJKLMNOPQRSTUVWXYZ

(space)"'#8%8'()*+.-./;<=>?@N"_{|}~

Go to 6 to install software.

When the wireless setup is successful, the LCD displays [Connected].

If the setup is unsuccessful, restart your Brother machine and your wireless access point or router, and repeat 7.

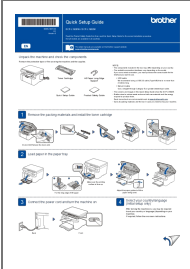
If still unsuccessful, visit support.brother.com.

For detailed machine information and prod the Online User's Guide a support brother manuals.

© 2024 Brother Industries, Ltd. All rights reserved.



Documents / Resources

	<p>brother DCPL1630W Multi Function Printer [pdf] User Guide</p> <p>DCPL1630W Multi Function Printer, DCPL1630W, Multi Function Printer, Function Printer, Printe r</p>
--	---

References

- [User Manual](#)

[Manuals+.](#) [Privacy Policy](#)

This website is an independent publication and is neither affiliated with nor endorsed by any of the trademark owners. The "Bluetooth®" word mark and logos are registered trademarks owned by Bluetooth SIG, Inc. The "Wi-Fi®" word mark and logos are registered trademarks owned by the Wi-Fi Alliance. Any use of these marks on this website does not imply any affiliation with or endorsement.