

**brother**  
**DCP-T536DW**  
**Series Continuous**  
**Color Inkjet**



# brother DCP-T536DW Series Continuous Color Inkjet User Guide

[Home](#) » [Brother](#) » brother DCP-T536DW Series Continuous Color Inkjet User Guide 

## Contents

- [1 brother DCP-T536DW Series Continuous Color Inkjet](#)
- [2 Product Usage Instructions](#)
- [3 FAQ](#)
- [4 Unpack the machine and check the components](#)
- [5 Connect](#)
- [6 Recommended](#)
- [7 Check the print quality](#)
- [8 Setup Finished](#)
- [9 Manual wireless setup](#)
- [10 Documents / Resources](#)
  - [10.1 References](#)

**brother**®

**brother DCP-T536DW Series Continuous Color Inkjet**



## Product Usage Instructions

- Unpack the machine and check the components included in the box:
- Remove the protective tape and film covering the machine.
- Load plain A4 paper into the paper tray according to your model.
- If using the machine as a fax machine, connect the telephone line cord to the LINE socket.
- Connect the power cord to power the machine.
- Choose your setup method either using a mobile app or computer software:

## FAQ

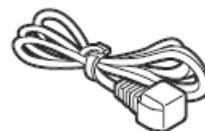
- **Q:** Where can I find more information on using the fax feature?
- **A:** Refer to the Online User's Guide for detailed instructions on using the fax feature.
- **Q:** What should I do if ink flow does not start automatically when filling the ink tanks?
- **A:** If the ink flow does not start automatically or fills very slowly, carefully remove and reinsert the ink bottle.

Read the Product Safety Guide first, then read this Quick Setup Guide for the correct installation procedure. If you selected [[5-B] Set up from the control panel on the machine] in the printed Quick Setup Guide included with the machine, go to [5-B].

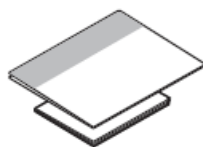
## Unpack the machine and check the components



**Inbox Ink  
Bottles\*4**



**Power Cord**



**User's  
Guide**



**USB Cable**

- Remove the protective tape and the film covering the machine.

#### **NOTE**

- The illustrations in this guide may not match your model exactly, but the steps are the same for each model. The above illustration is MFC-T930DW.
- Save all packing materials and the box in case you need to ship your machine.
- We recommend using a USB 2.0 cable (Type A/B) that is no more than 2 meters long.
- Use a straight-through Category 5 (or greater) twisted-pair cable for a 10BASE-T or 100BASE-TX Fast Ethernet Network (not included). (DCP-T830DW / DCP-T835DW / MFC-T930DW)

#### **Load plain A4 paper in the paper tray**

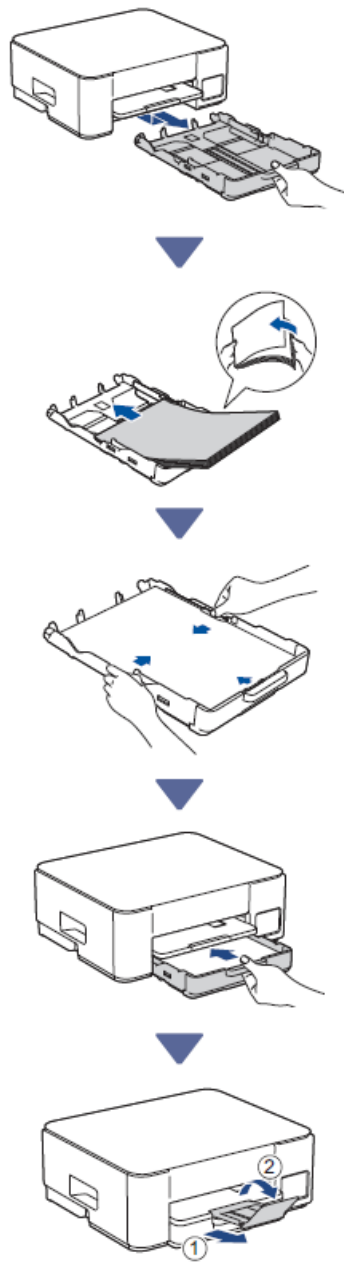


- Proceed to the next step according to your model. The model name can be found on the front of the machine.

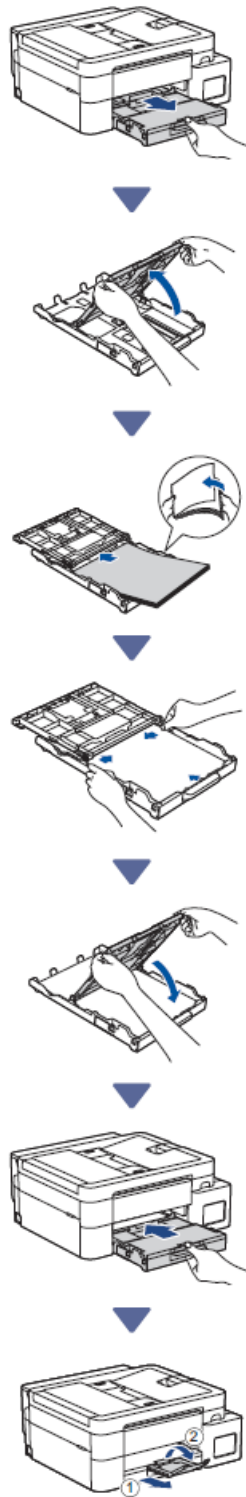
DCP-T536DW / DCP-T730DW  
DCP-T735DW



2-A



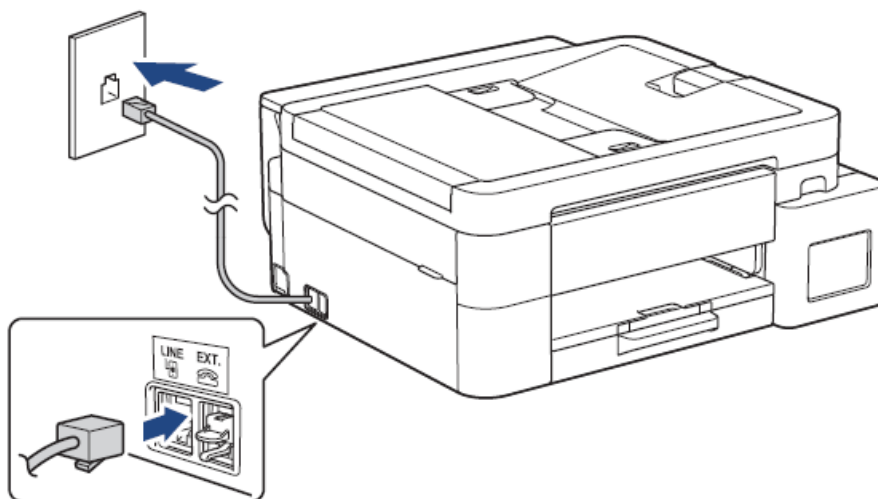
2-B



## Connect

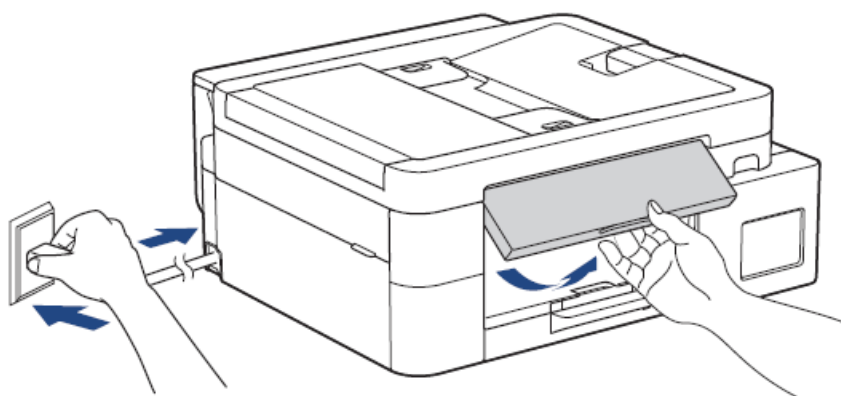
### Connect the telephone line cord (MFC-T930DW)

- Follow this step only for models
- MFC-T930DW and if you are using this machine as a fax machine.
- The telephone line cord is not included in the box.



- Insert the telephone line cord into the socket marked LINE.
- For more information on using the fax feature, see the Online User's Guide.

### Connect the power cord



- The machine powers on automatically.

### Choose your setup method

Choose your setup method below.

- To complete both the setup and the connection settings with your device at the same time, follow the instructions in [5-A].
- To set up your machine using a Mac, follow the instructions in section [5-B].

Set up using mobile app or computer software (recommended) → **5-A**

---

Set up from the control panel on the machine → **5-B**

### Recommended

#### Set up using the mobile app or computer software

- (To set up your machine using a Mac, follow the instructions in section [5-B].)
- Go to the website applicable to your setup method:

### Set up with your mobile device

- The mobile device must be connected to Wi-Fi®.
- [setup.brother.com](http://setup.brother.com)



### Set up with your computer

- [setup.brother.com](http://setup.brother.com)




### NOTE



Even after the setup is complete, you can also use your machine on another device by installing the software on that device.

### Set up from the control panel on the machine

Follow the steps below according to your model.

DCP-T536DW / DCP-T730DW / DCP-T735DW  
DCP-T830DW / DCP-T835DW


1. When [Set up?] is displayed, press .

2. Press  or  to select [Set up using LCD], and then press OK.

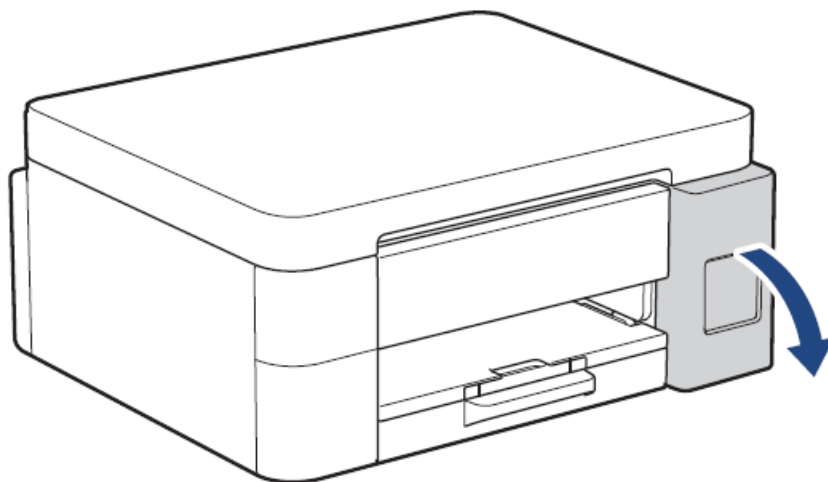
3. When the message appears on the LCD, press .

### MFC-T930DW

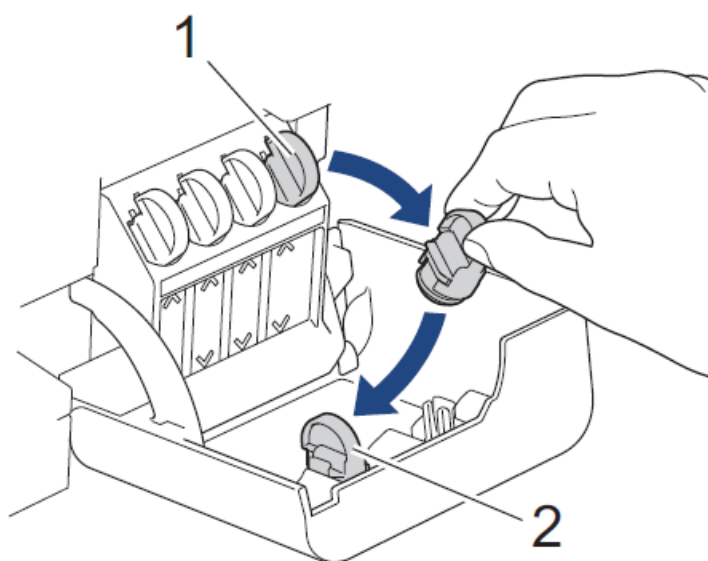
1. Press  when the QR Code screen appears.

2. Press  when the [Set up from machine] screen appears to confirm the change of mode.

### Fill the ink tanks with inbox ink

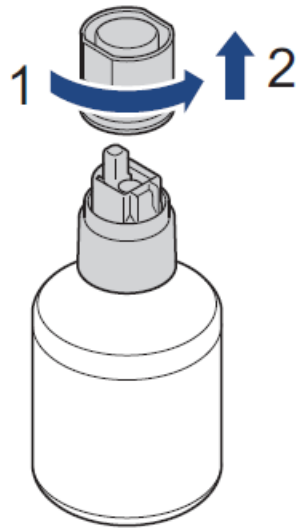


- Open the ink tank cover.
- (The illustrations in this guide may not match your model exactly, but the steps are the same for each model.)

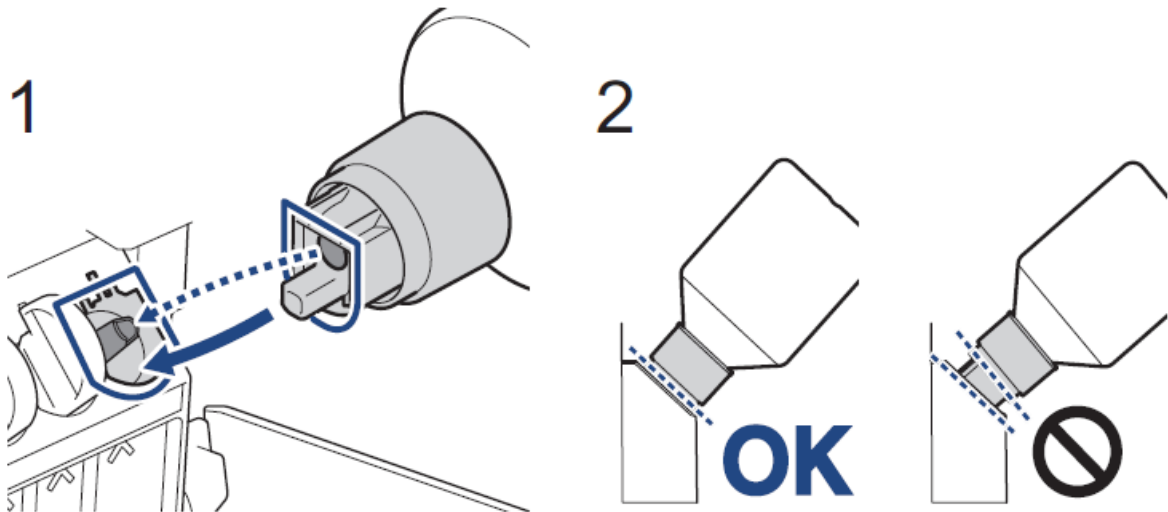


- Remove the cap (1) and place it inside the back of the cover (2).

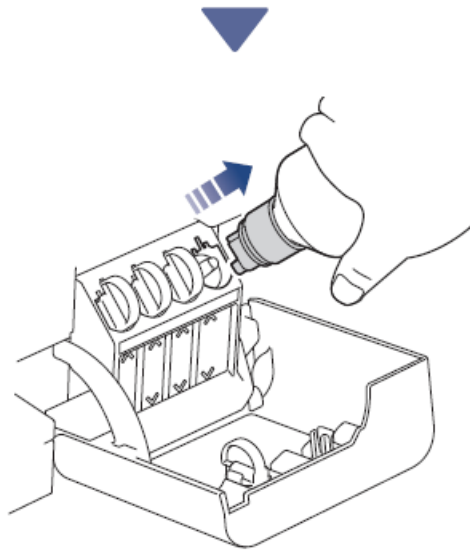




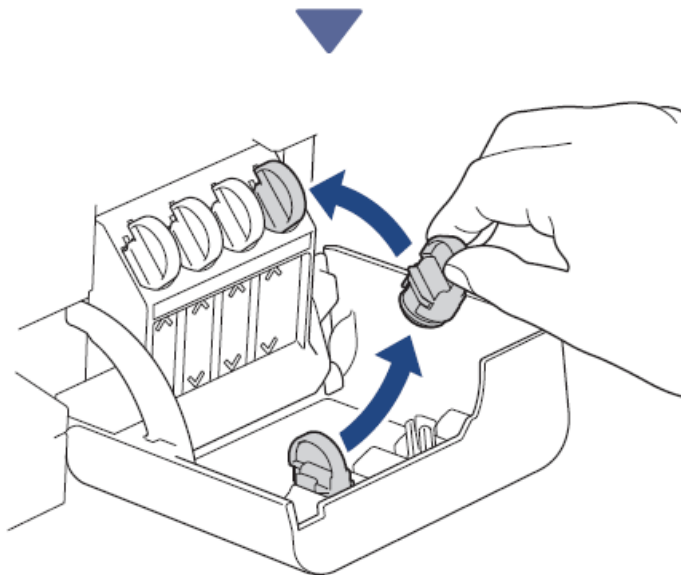
- Remove the ink bottle cap.



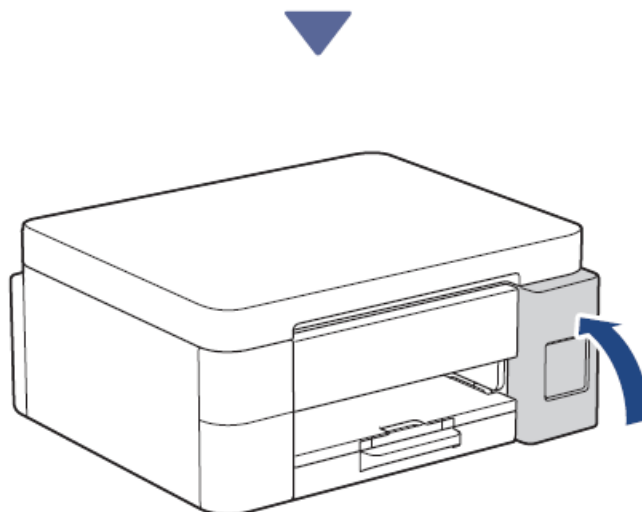
- Align the bottle so that the pin on the ink tank can be inserted into the hole in the bottle, as shown in (1).
- Slide the bottle onto the pin at the angle shown in (2) until the cap is flush with the ink tank surface.
- (You will hear a click when you insert it for the first time.)
- The bottle will support itself when in the correct position and the ink will fill the tank automatically.
- If ink flow does not start automatically or if it fills very slowly, carefully remove and reinsert the bottle.



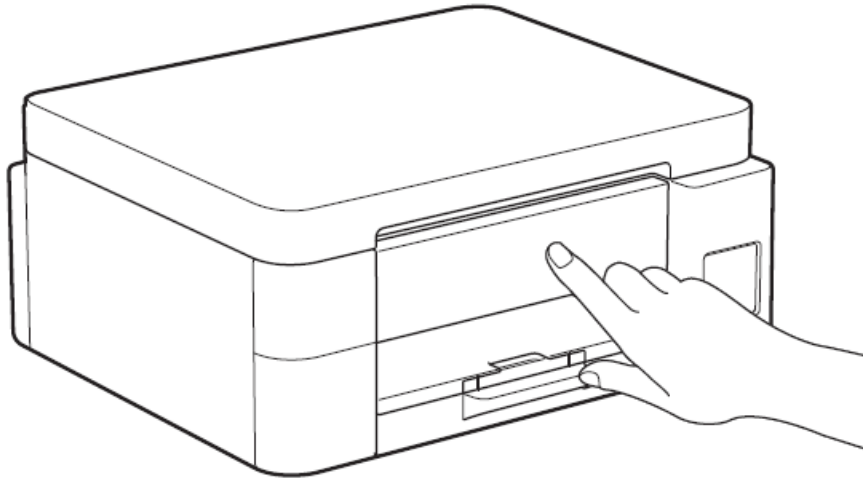
- When finished, remove the bottle, pulling the nozzle slowly so the ink does not spill.



- Remove the cap from inside the ink tank cover and seal the ink tank.



- After filling all of the ink tanks, close the ink tank cover.



- Check the LCD messages to continue setup.
- When the message preparing ink appears, follow the LCD instructions to perform the initial ink system cleaning.
- Cleaning can take a few minutes, and you can perform the next step during this time.

### **Set the date and time**

Follow the steps on the LCD to set the date and time.

DCP-T536DW / DCP-T730DW / DCP-T735DW  
DCP-T830DW / DCP-T835DW

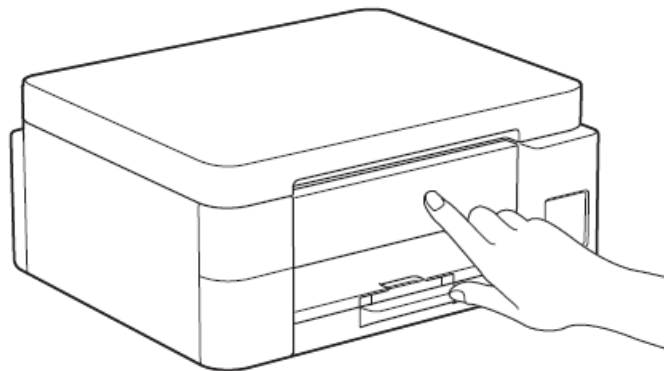
1. Press OK to set the date and time.
2. Press or to select the number, and then press OK to set the date and time.

### **MFC-T930DW**

- Follow the LCD instructions to set the date and time.

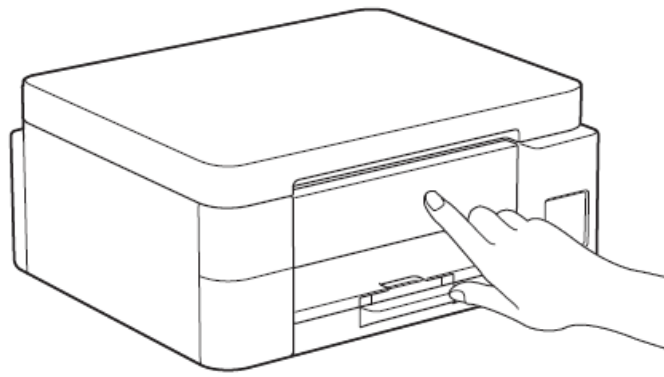
### **Set firmware update notifications**

- Follow this step for models MFC-T930DW only.



- When the firmware update information screen appears, configure your firmware settings.


## Check the print quality



When the initial ink system cleaning has finished, print the Print Quality Check Sheet:

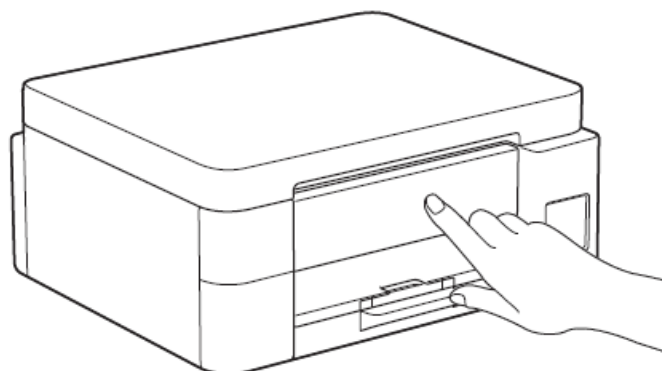
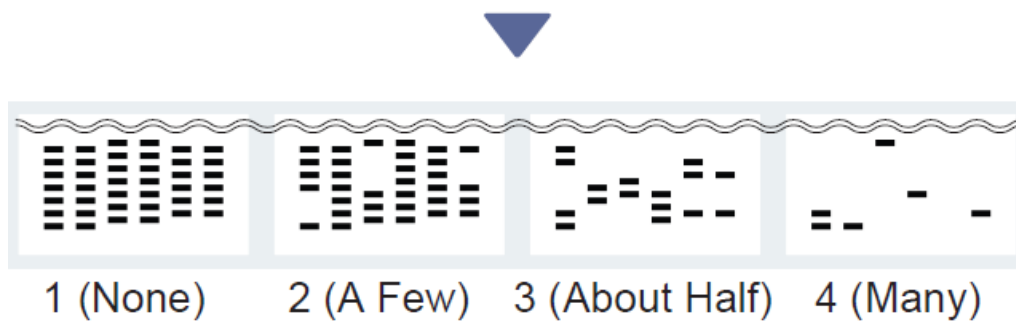
- DCP-T536DW / DCP-T730DW / DCP-T735DW
- DCP-T830DW / DCP-T835DW

### Press Start

- MFC-T930DW
- Press .

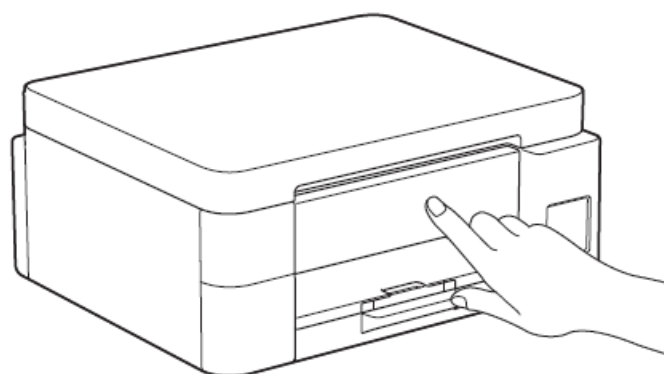


- The machine prints the Print Quality Check Sheet.




- On the machine's LCD, select the images that closely match the image for each color on the Print Quality Check Sheet, and then restart the cleaning procedure, if required.

#### **Adjust the print alignment (recommended)**




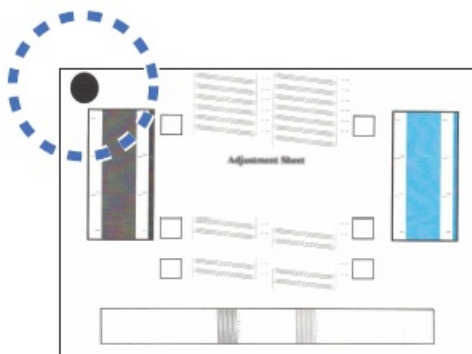
To adjust the print alignment before using your machine, print the Adjustment Sheet:

- DCP-T536DW / DCP-T730DW / DCP-T735DW
- DCP-T830DW / DCP-T835DW

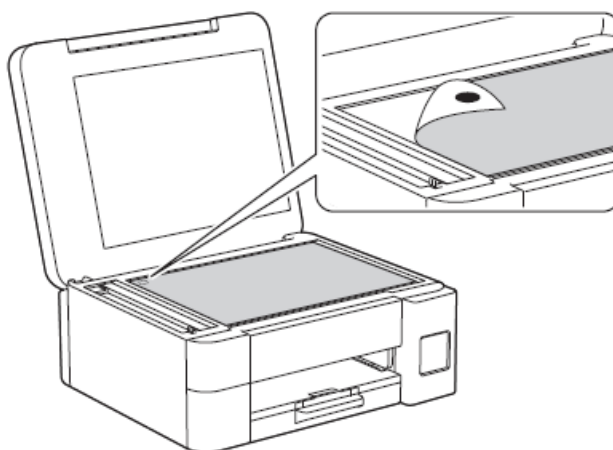
When the alignment check message appears, press  and follow the LCD instructions.

**MFC-T930DW**

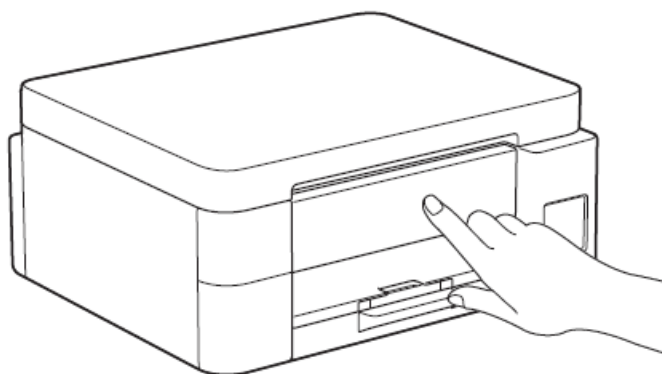
- When the paper adjustment message appears, press  and follow the LCD instructions.



- There is a black circle located in the upper left corner of the sheet.



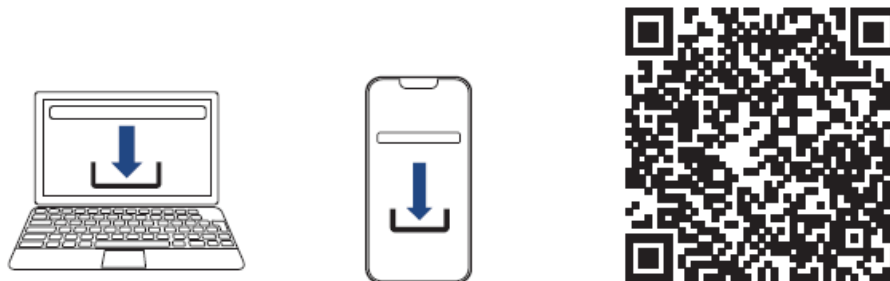
- Place the Adjustment Sheet face down on the scanner glass, making sure the black circle is in the upper left corner of the scanner glass, as shown.



- Follow the LCD instructions to adjust the alignment.
- When finished, remove the Adjustment Sheet from the scanner glass.

## Connect your computer or mobile device to your machine (if needed)

- Visit the following website from your computer or mobile device or scan the code below to install the software.
- [setup.brother.com](http://setup.brother.com)

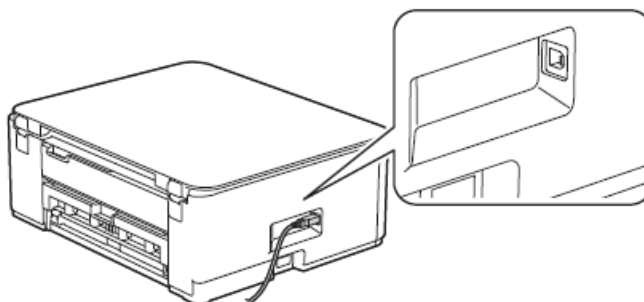


- Make sure your machine and mobile device are connected to the same network.

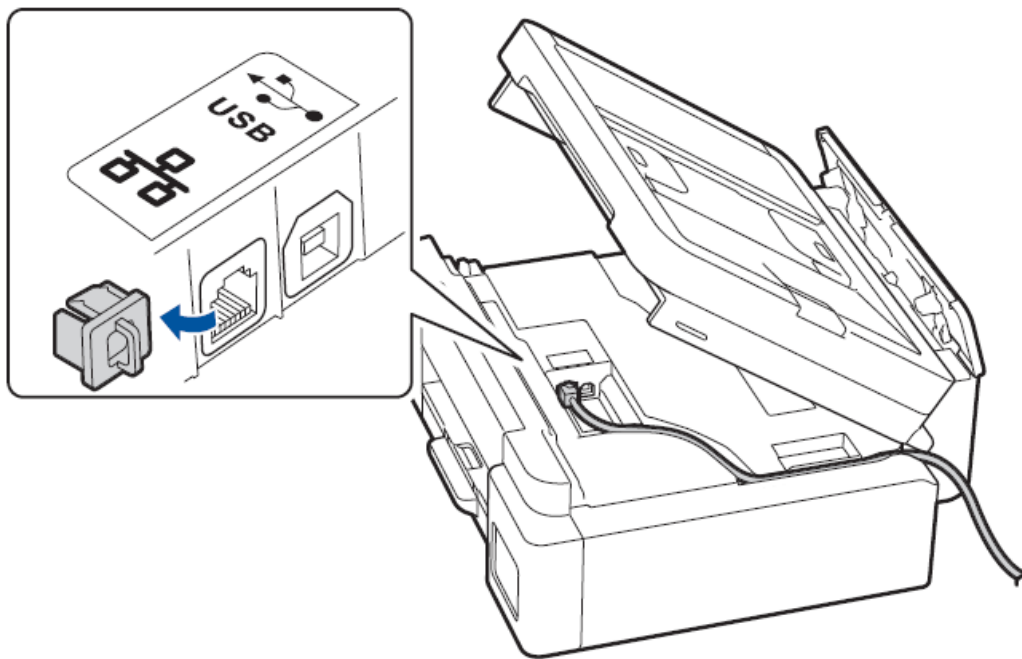
### NOTE

DCP-T536DW / DCP-T730DW / DCP-T735DW

- For USB connection, locate the correct port on the side of the machine, as shown.



- DCP-T830DW / DCP-T835DW / MFC-T930DW



- For wired network connection and USB connection, locate the correct port (based on the cable you are using) inside the machine, as shown.

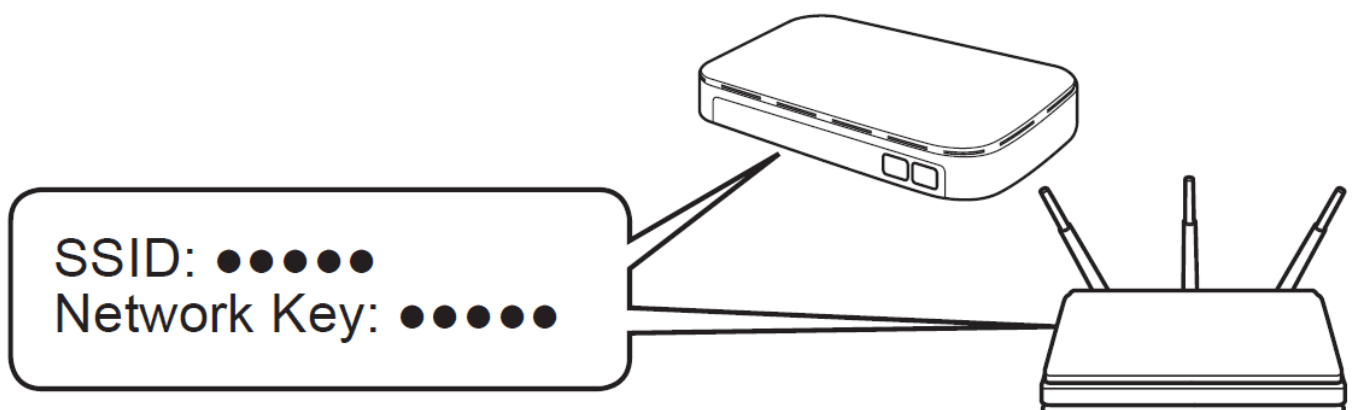
## Setup Finished

- Now you are ready to print or scan from this machine.
- Perform the following steps as necessary.

### Important Notice for Network Security

The default password to manage this machine's settings is located on the back of the machine and marked "Pwd". We recommend immediately changing the default password to protect your machine from unauthorized access.

## Manual wireless setup



- Find the SSID (Network Name) and Network Key (Password) on your wireless access point/router.


DCP-T536DW / DCP-T730DW / DCP-T735DW  
DCP-T830DW / DCP-T835DW

1. Go to your machine and press Wi-Fi.





2. Press OK to select [Find Network].

The [WLAN Enable?] message appears on the LCD.


3. Press  to select [On].
4. Select the SSID (Network Name) for your access point/router and enter the Network Key (Password).


If you cannot find this information, ask your network administrator or wireless access point/router manufacturer.

- To enter the Network Key (Password), hold down or repeatedly press  or  to select a character from the list below:

aAbBcCdDeEfFgGhHiIjJkKlLmMnNoOpPqQrRsStT  
uUvVwWxXyYzZ!?\$&%#'\`'^|{}[] () ;:,.~<>=+-\*/  
\_1234567890

## MFC-T930DW

1. Go to your machine, and press  on the panel.
2. Press OK to select [Find Wi-Fi Network].  
The [Enable WLAN?] message appears on the LCD.

3. Press  to select Yes.
4. Select the SSID (Network Name) for your access point/router and enter the Network Key (Password).

If you cannot find this information, ask your network administrator or wireless access point/router manufacturer.

For more information, see Enter Text on Your Brother Machine in the Online User's Guide.  
When the wireless setup is successful, the LCDs [Connected].

For detailed machine information and product specifications, see the Online User's Guide at [www.95105369.com](http://www.95105369.com).



## Documents / Resources



[brother DCP-T536DW Series Continuous Color Inkjet](#) [pdf] User Guide  
DCP-T536DW Series Continuous Color Inkjet, DCP-T536DW Series, Continuous Color Inkjet, C  
olor Inkjet, Inkjet

References

- [User Manual](#)

Manuals+, Privacy Policy

This website is an independent publication and is neither affiliated with nor endorsed by any of the trademark owners. The "Bluetooth®" word mark and logos are registered trademarks owned by Bluetooth SIG, Inc. The "Wi-Fi®" word mark and logos are registered trademarks owned by the Wi-Fi Alliance. Any use of these marks on this website does not imply any affiliation with or endorsement.