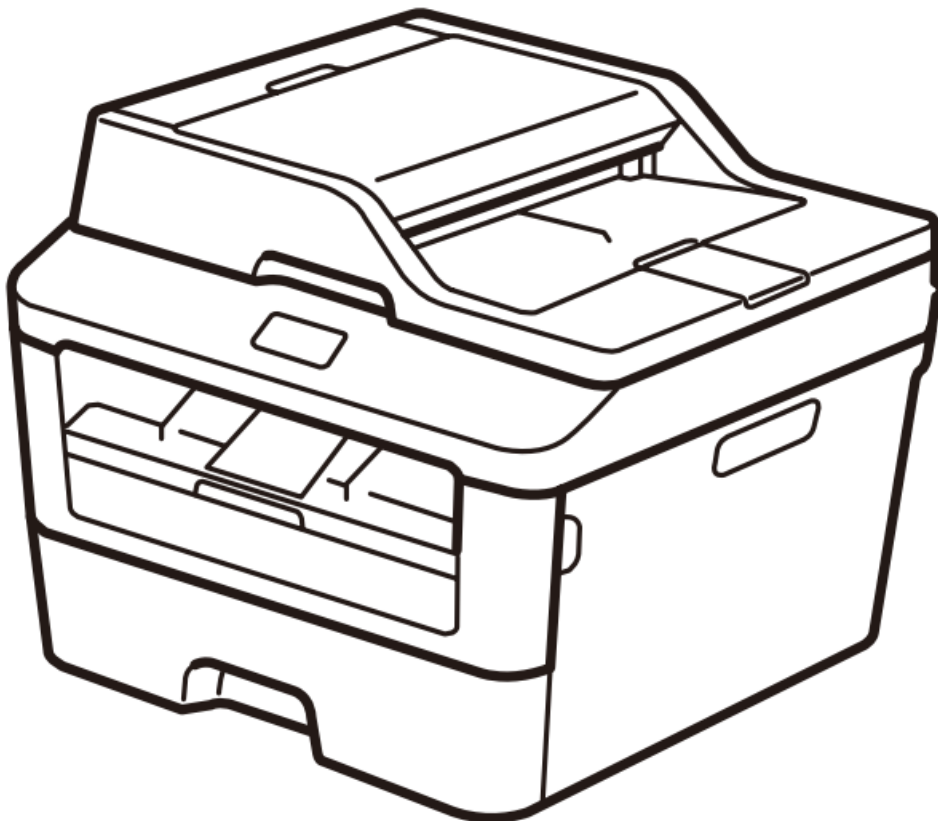




brother DCP-L2540DW Monochrome Laser Multi Function Center User Guide

[Home](#) » [Brother](#) » brother DCP-L2540DW Monochrome Laser Multi Function Center User Guide 

brother DCP-L2540DW Monochrome Laser Multi Function Center



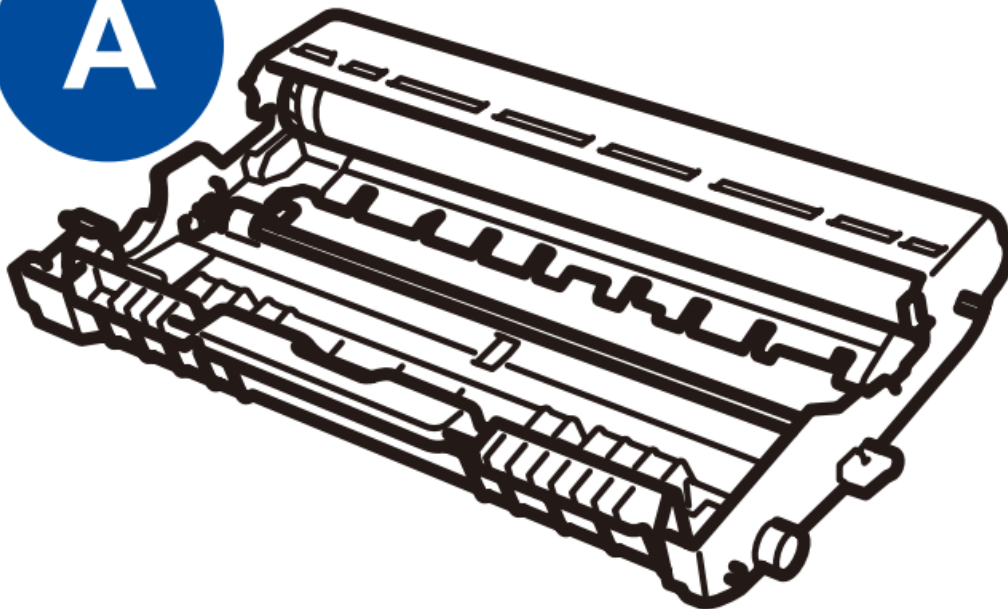
Contents

- [1 Unpack the machine and check the components](#)
- [2 Instruction for use](#)
- [3 Print and scan using your mobile device](#)
- [4 Customer Support](#)
- [5 Documents / Resources](#)
 - [5.1 References](#)
- [6 Related Posts](#)

Unpack the machine and check the components

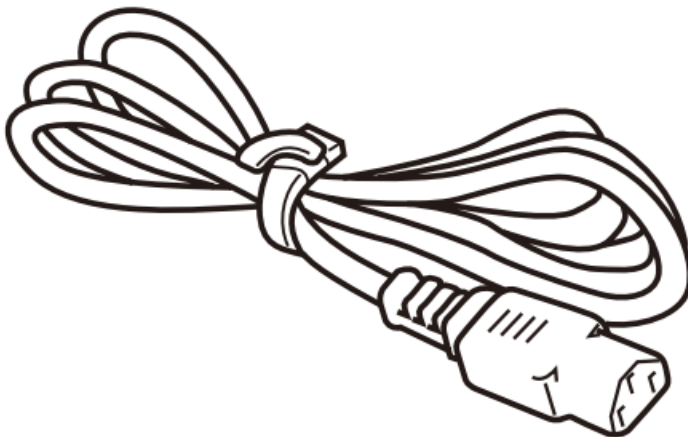
- **Drum Unit**

(Pre-installed)

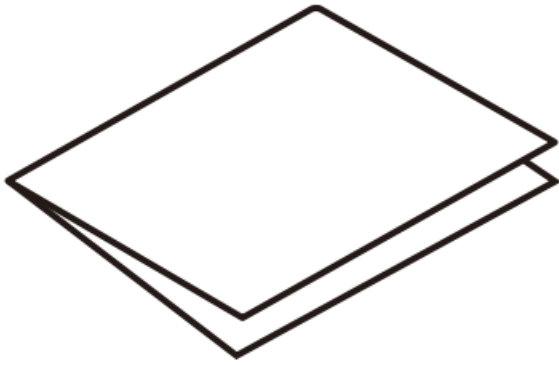


- **AC Power Cord**

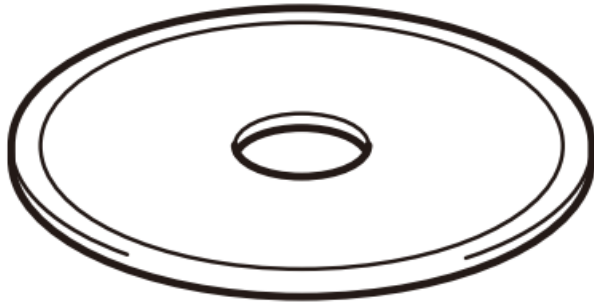
(only for certain models)



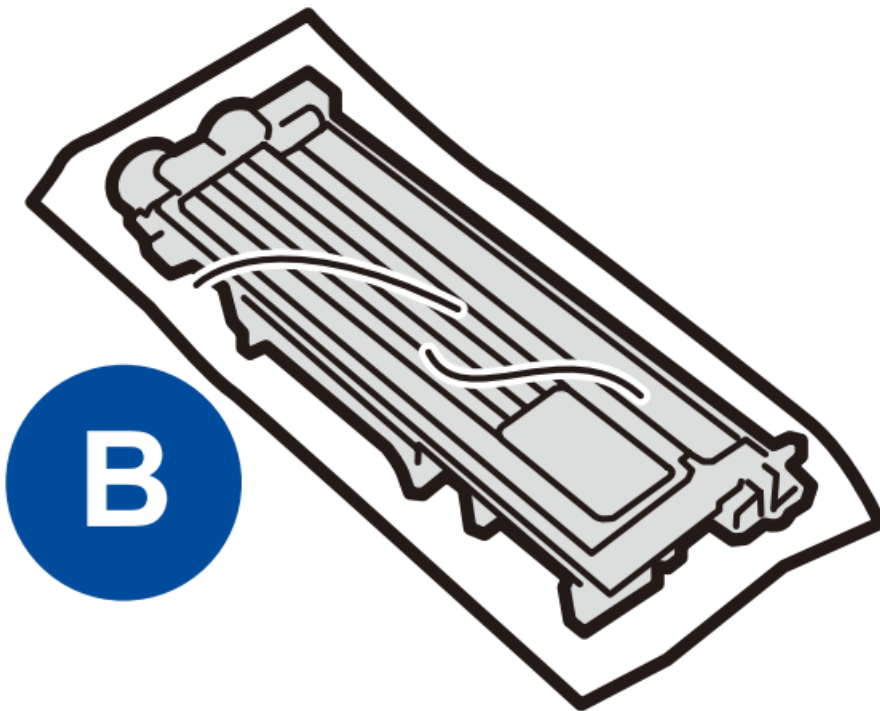
- **Quick Setup Guide**



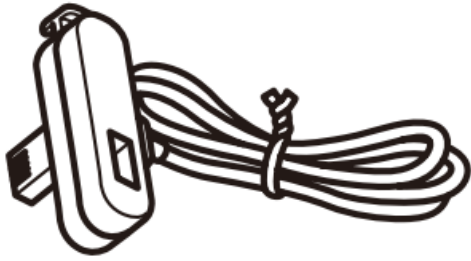
- **CD-ROM**



- **Inbox Toner Cartridge**



- **Telephone Line Cord**
(For MFC models)

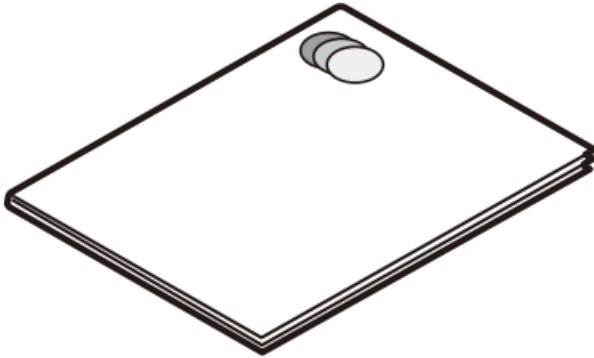


(For U.K.)



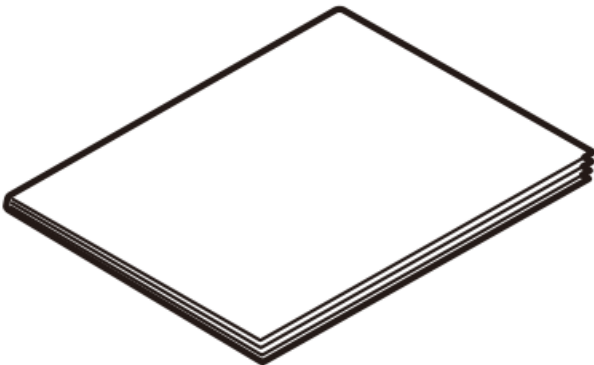
(For Others)

- **Product Safety Guide**



- **Basic User's Guide**

(only for certain models)



Read the Product Safety Guide first, then read this Quick Setup Guide for the correct installation procedure.

NOTE:

- The components included in the box and the AC power plug may differ depending on your country.
- The illustrations in this Quick Setup Guide are based on the MFC-L2700DW.
- You must purchase the correct interface cable for the interface you want to use.

USB cable

We recommend using a USB 2.0 cable (Type A/B) that is no more than 2 metres long.

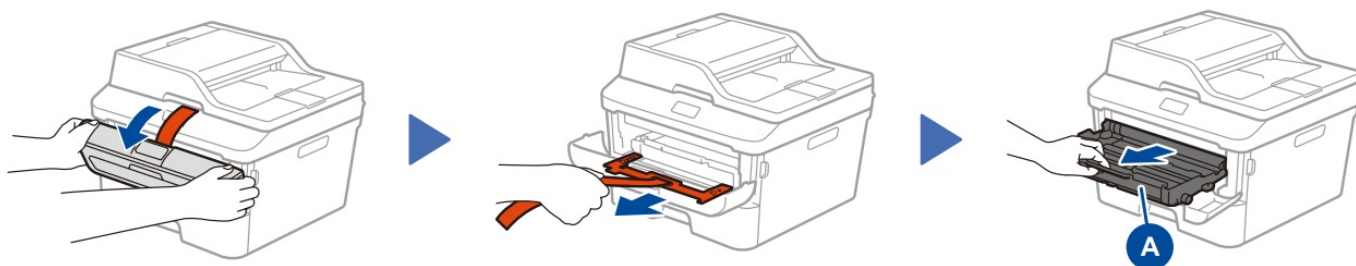
Network cable

Use a straight-through Category 5 (or greater) twisted-pair cable for 10BASE-T or 100BASE-TX Fast Ethernet Network.

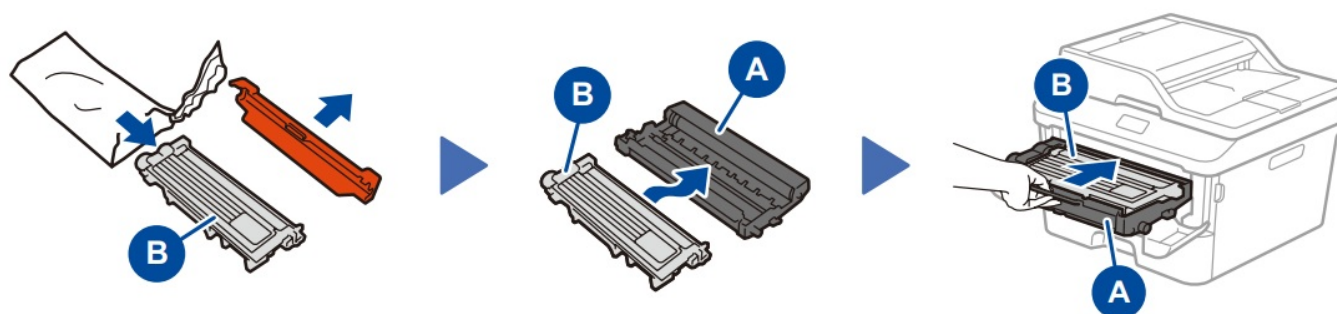
Instruction for use

Remove the packing materials and install the toner cartridge

Remove the orange part.

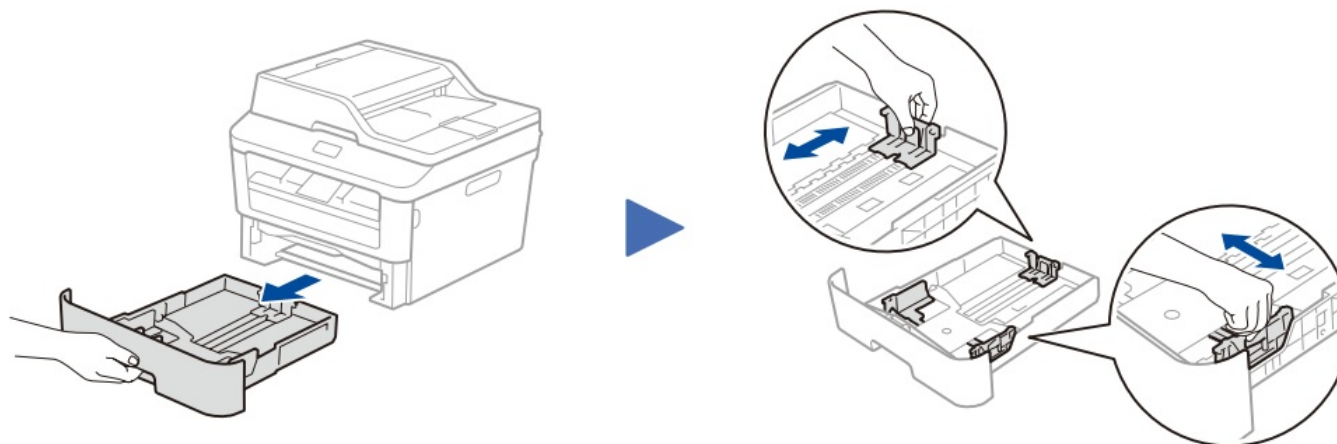


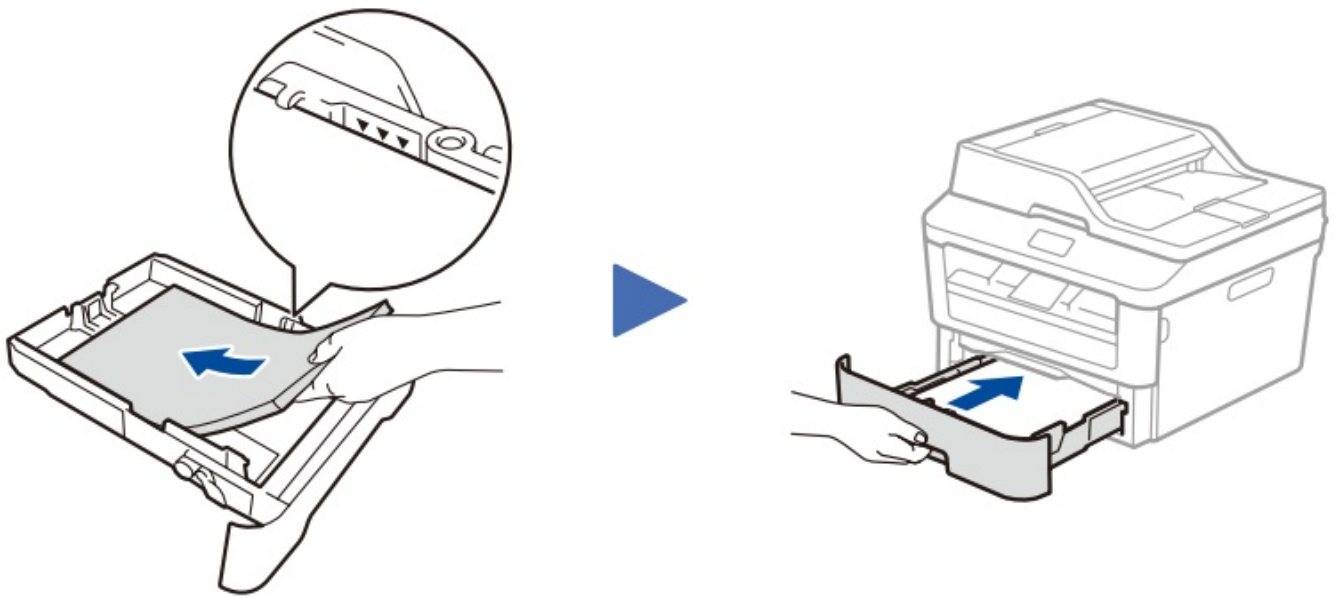
Remove the orange part.



Load paper in the paper tray

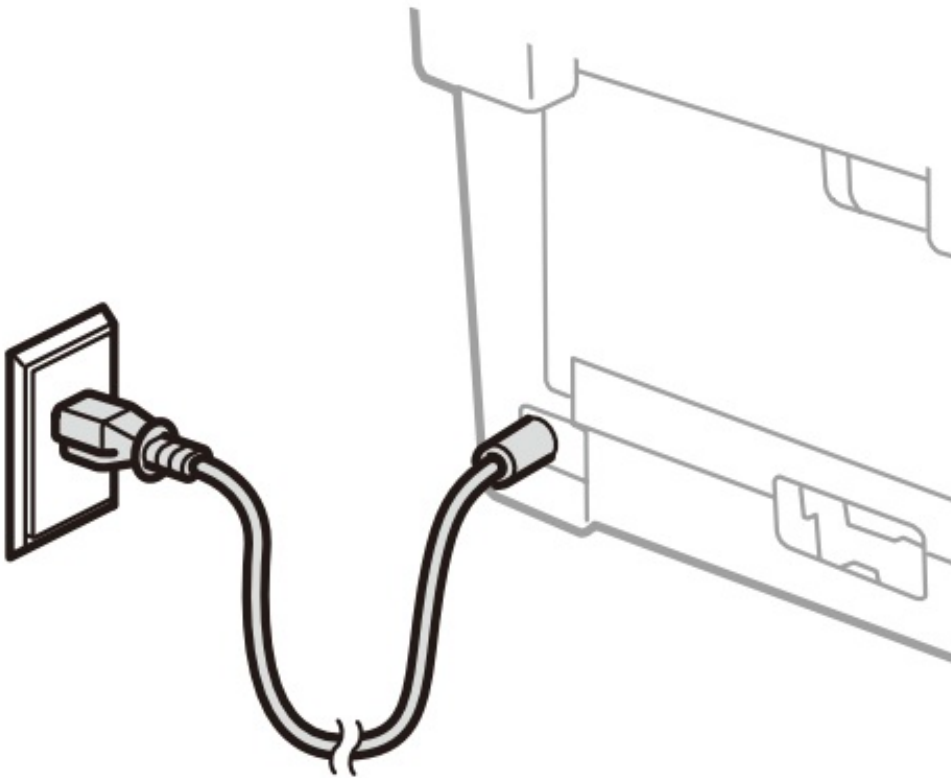
Adjust the paper guides.



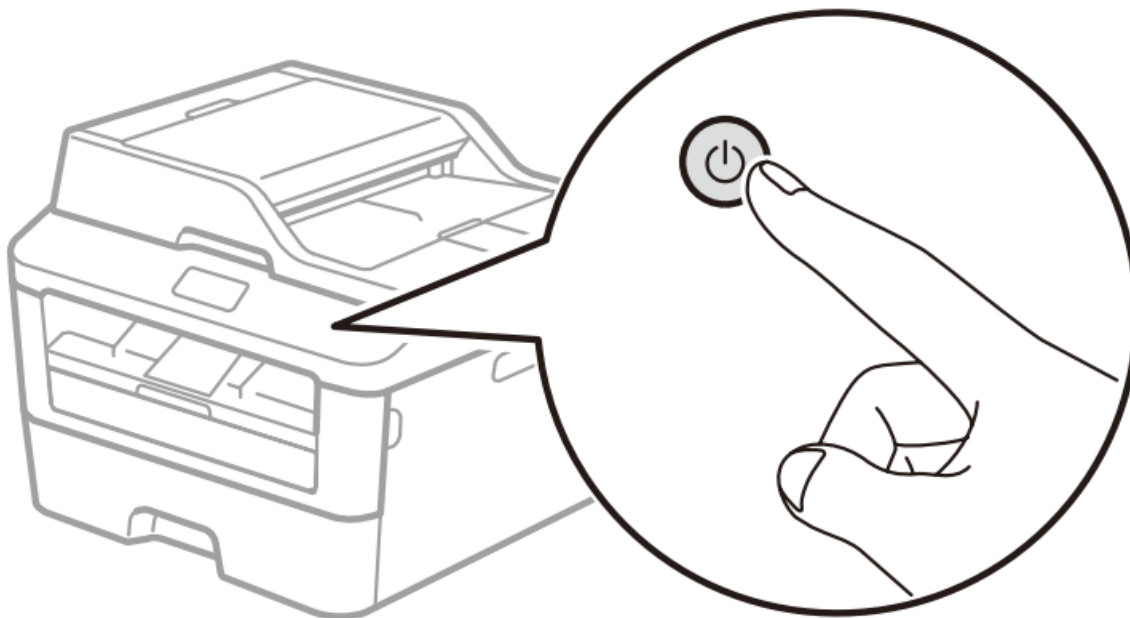


Connect the power cord and turn on the machine

- Back



- Front



Select your country/language (Initial setup only)

After turning on the machine, you may be required to set your country or language (depending on your machine). If required, follow the on-screen instructions.

Select your language (If needed) (Only for certain models)

1. (DCP model)
 - a. Press Menu.
 - b. Press ▲ or ▼ to display General Setup, and then press OK.
2. Press ▲ or ▼ to display Local Language, and then press OK. (MFC model) Press **Menu, 0, 0**.
3. Press ▲ or ▼ to select your language, and then press OK.
4. Press Stop/Exit.

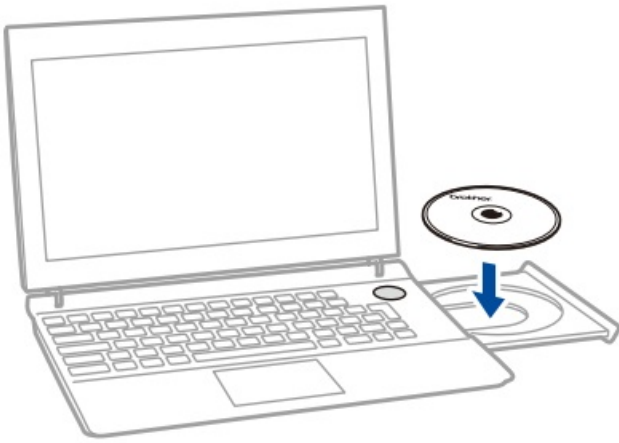
Connect the machine to your computer/mobile device

- Windows® PC with a CD-ROM drive, go to step 6A
- Windows® PC without a CD-ROM drive, go to step 6B
- Macintosh, go to step 6B
- Mobile device users with a WPS/AOSS™-supported access point/router, go to step 6C


Step 6A

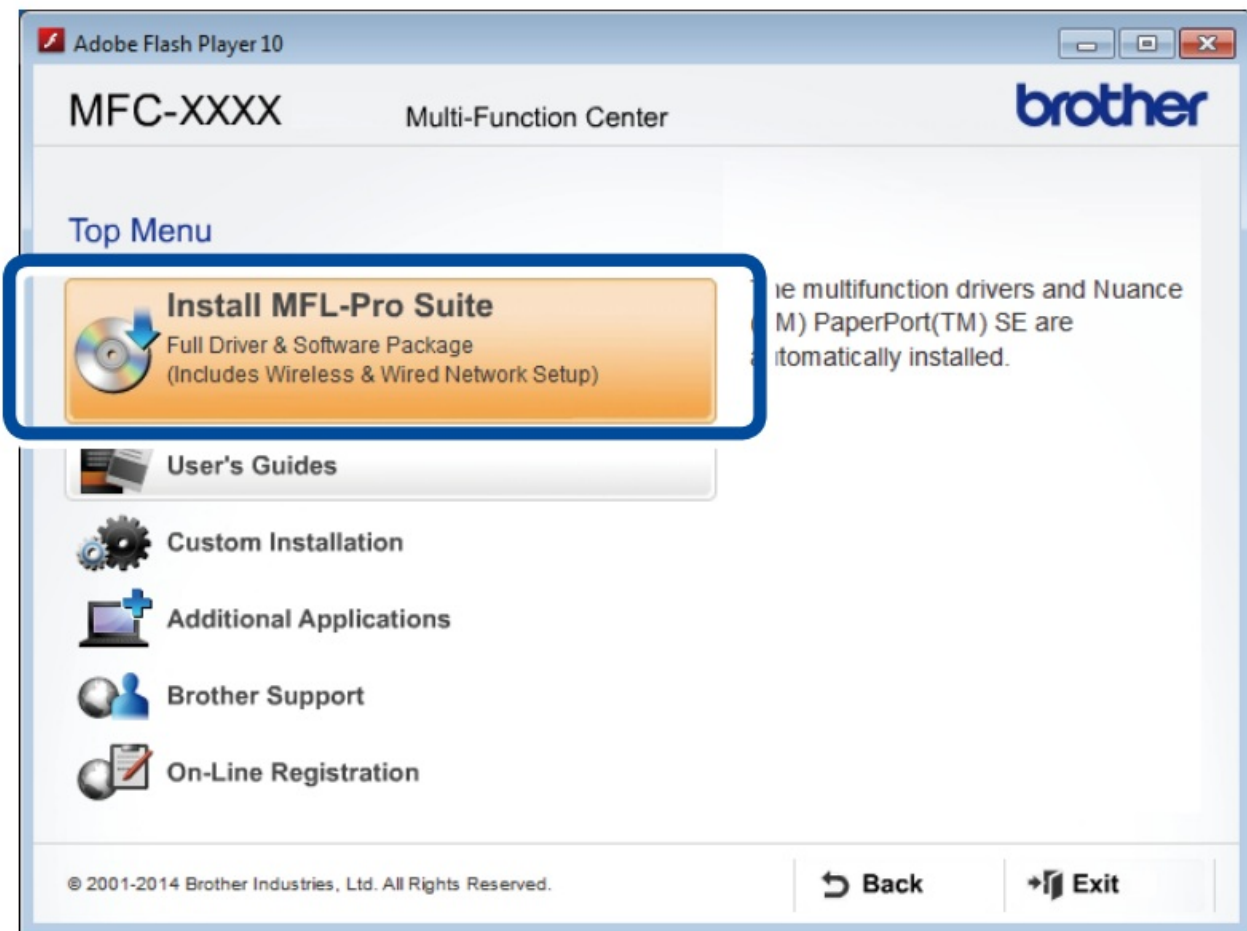


Configuration using the CD-ROM (Windows®)



NOTE:

If the Brother screen does not appear automatically, go to Computer (**My Computer**). (For Windows® 8: click the  (**File Explorer**) icon on the taskbar, and then go to Computer.) Double-click the CD-ROM icon, and then double-click **start.exe**.



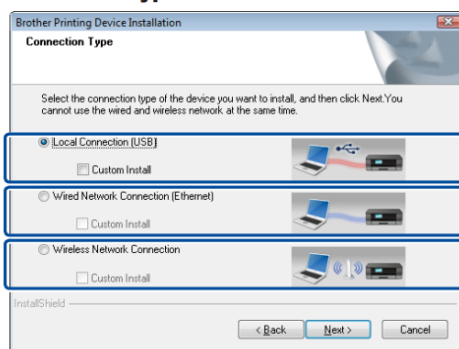
Follow the on-screen instructions to continue installation until either the Connect the machine or the Connection Type screen appears.

■ **Connect the machine:** Follow the on-screen instructions to continue installation.

Finish

■ **Connection Type:**

Connection Type



For USB Connection

For Wired Network Connection
Connect a network cable first.

For Wireless Network Connection
We recommend preparing a USB cable to use temporarily during the wireless setup.

Follow the on-screen instructions to continue installation.

Finish

NOTE:
If connection is unsuccessful, repeat this step.



Wireless Network Connection



[Recommended]

Select this option if you have a USB cable to use temporarily for wireless setup.

Select this option if you do not have a USB cable.

Follow the on-screen instructions to continue installation.

Finish

NOTE:

If connection is unsuccessful, repeat this step.

Step 6B



Configuration without using the CD-ROM (Windows® without CD-ROM drive or Macintosh)

Download the full driver and software package from the Brother Solutions Center.

(For Windows®) solutions.brother.com/windows

(For Macintosh) solutions.brother.com/mac

After you download the driver and software package, follow the on-screen instructions until the Connection Type screen appears. Refer to 6A Configuration using the CD-ROM (Windows®).

Step 6C

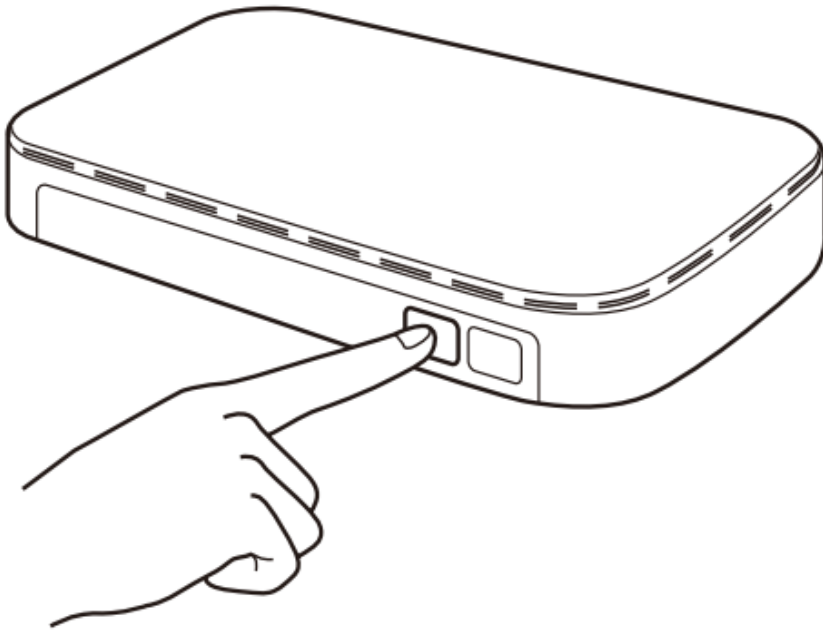
WiFi



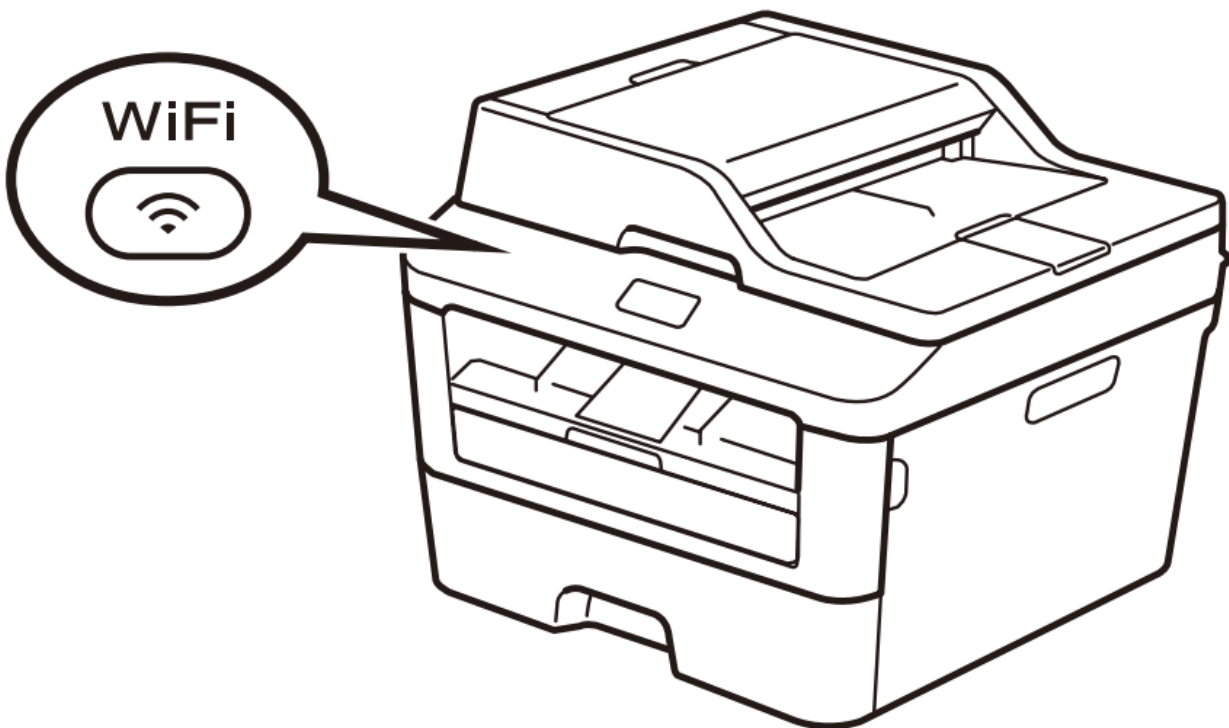
One-push wireless setup for mobile devices (Wireless models only)

If your wireless LAN access point/router supports automatic wireless (one-push) setup (WPS/AOSS™), you can set up your machine without using a computer.

- Press the WPS or AOSS™ button on your wireless LAN access point/router.



- Press the WiFi button on your machine



- Wireless setup is now complete.

NOTE:

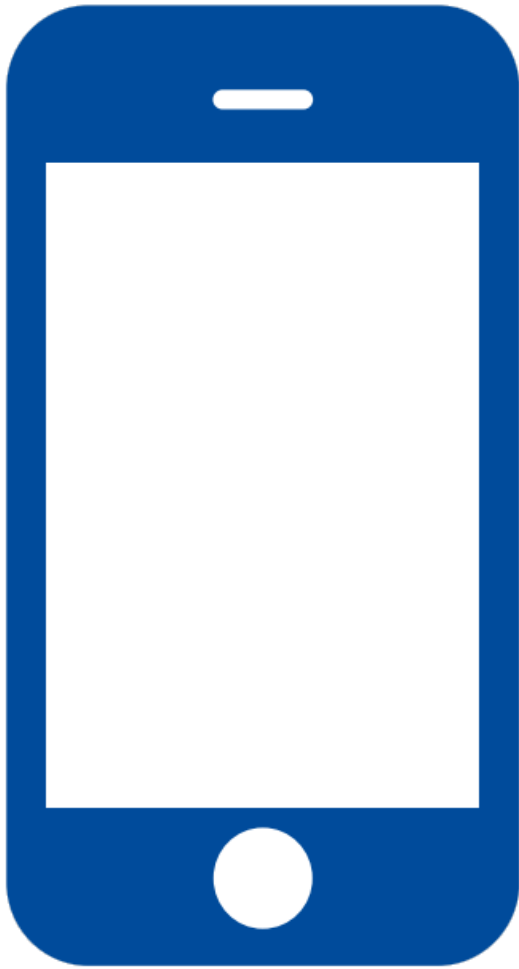
Before you can use your machine with your mobile device, download “Brother iPrint & Scan.”

Print and scan using your mobile device

Download “Brother iPrint & Scan” to start using your machine with mobile devices.



solutions.brother.com/ips



Customer Support

Not all models are available in all countries.



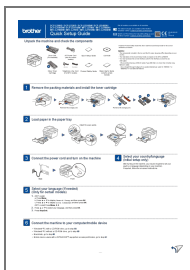
The latest manuals are available at the Brother Solutions Center: solutions.brother.com/manuals.



Watch our FAQ Videos for help with setting up your Brother machine: solutions.brother.com/videos.






Documents / Resources



[brother DCP-L2540DW Monochrome Laser Multi Function Center](#) [pdf] User Guide
DCP-L2540DW Monochrome Laser Multi Function Center, DCP-L2540DW, Monochrome Laser
Multi Function Center, Laser Multi Function Center, Multi Function Center, Function Center, Cent
er

References

- [Brother Solutions Center](#)
- [Brother Solutions Center](#)
- [Brother Solutions Center](#)

-  [Brother Solutions Center](#)
-  [Brother Solutions Center](#)
-  [Manual-Hub.com - Free PDF manuals!](#)
- [User Manual](#)

[Manuals+](#), [Privacy Policy](#)

This website is an independent publication and is neither affiliated with nor endorsed by any of the trademark owners. The "Bluetooth®" word mark and logos are registered trademarks owned by Bluetooth SIG, Inc. The "Wi-Fi®" word mark and logos are registered trademarks owned by the Wi-Fi Alliance. Any use of these marks on this website does not imply any affiliation with or endorsement.