



brother DCP-B7530DN Scanner Driver and Software Printer User Guide

[Home](#) » [Brother](#) » brother DCP-B7530DN Scanner Driver and Software Printer User Guide 



MFC-B7720DN / MFC-B7700D / DCP-B7530DN / DCP-B7500D
Quick Setup Guide

Contents

- [1 DCP-B7530DN Scanner Driver and Software Printer](#)
- [2 Remove the packing materials and install the drum unit and toner cartridge assembly](#)
- [3 Load paper in the paper tray](#)
- [4 Connect the power cord and turn the machine on](#)
- [5 Select a device to connect to your machine](#)
- [6 Connect your computer](#)
- [7 Print or scan using your mobile device](#)
- [8 Documents / Resources](#)
 - [8.1 References](#)

DCP-B7530DN Scanner Driver and Software Printer

Read the Product Safety Guide first, then read this Quick Setup Guide for the correct installation procedure.

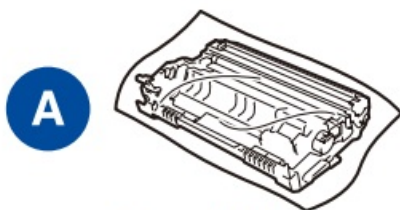


Operation Videos
www.95105369.com

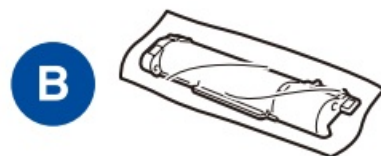


Installation
& Using
Videos

Unpack the machine and check the components



Drum Unit



Inbox Toner Cartridge



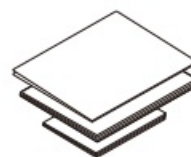
Telephone Line Cord
(For MFC-B7720DN/MFC-B7700D)



USB Interface Cable



Brother Installation Disc



Quick Setup Guide
Reference Guide
Product Safety Guide

NOTE:

- The available connection interfaces vary depending on the model.
- Use the appropriate interface cable for the connection you want to use. (Network cable is not a standard accessory.)

USB cable

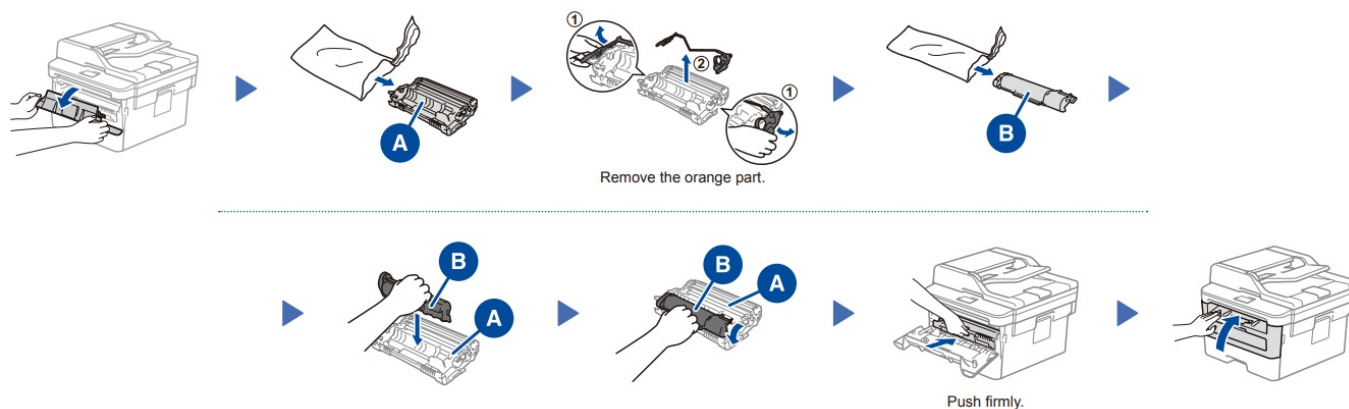
We recommend using a USB 2.0 cable (Type A/B) that is no more than 2 metres long.

Network cable

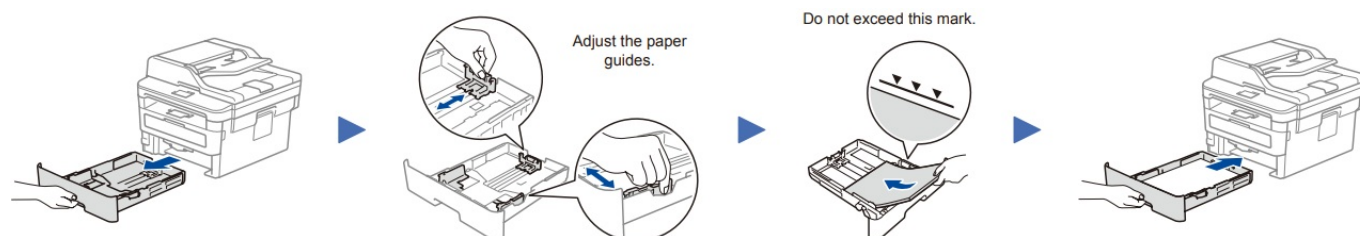
Use a straight-through Category 5 (or greater) twisted-pair cable.

- The illustrations in this Quick Setup Guide show the MFC-B7720DN.

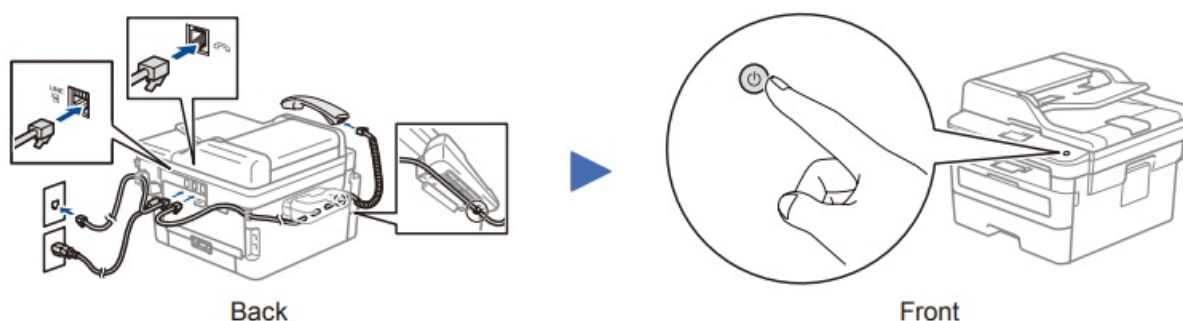
Remove the packing materials and install the drum unit and toner cartridge assembly



Load paper in the paper tray



Connect the power cord and turn the machine on



Select a device to connect to your machine

Computer

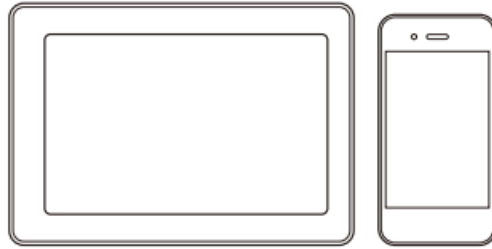


Go to 5 and follow the instructions.

NOTE:

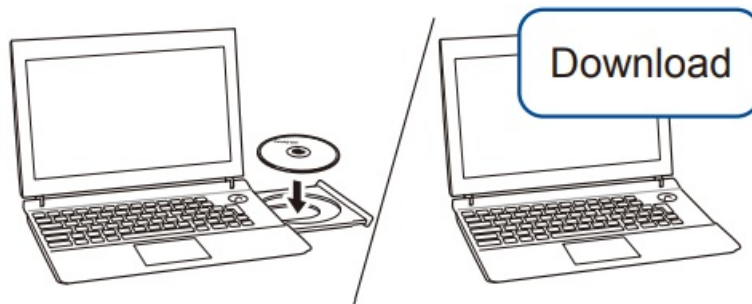
We recommend configuring wireless settings from your computer.

Mobile Device (MFC-B7720DN/DCP-B7530DN)



Go to 6 and follow the instructions.

Connect your computer



Put the installation disc into your CD/DVD drive, or download the Full Driver & Software Package at:

www.95105369.com

If you are using a recently released operating system on your computer, visit the above websites for updated driver and software information.

Brother regularly updates firmware to add features and apply bug fixes. To check for the latest firmware, visit support.brother.com/up5.

Follow the on-screen instructions and prompts.

Finished



For Windows:®

If the Brother screen does not appear automatically, go to Computer (This PC). Double-click the CD/DVD-ROM icon, and then double-click start.exe.

For Mac:

For full driver functionality, we recommend choosing the CUPS driver when adding a printer.

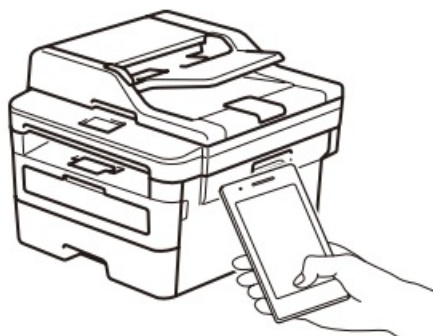
Can't Connect? Check the following:

 Wired network  USB connection	Disconnect the cable.	Restart your machine and computer then go to 5.
--	-----------------------	---

Print or scan using your mobile device

(MFC-B7720DN/DCP-B7530DN)

Your mobile device must be connected to the same wireless network as your Brother machine.



AirPrint AirPrint is available for all supported iOS devices including iPhone, iPad and iPod touch. You do not need to download any software to use AirPrint. For more information, see the Online User's Guide.



Search Mopria from the search engine you use, then download and install the Mopria® Print Service app using your Android™ device.



Download and install our free application Brother iPrint&Scan.



Read the two-dimensional code (or visit www.95105369.com), click iPrint&Scan from the mobile application menu on the right-lower corner to enter the download page.

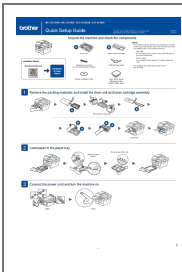
Optional apps

You can print from and scan to your mobile device using various apps. For instructions, see the Online User's Guide.

For other operation Videos, FAQs, and to download drivers, softwares and manuals, visit www.95105369.com.

For product specifications, see the Online User's Guide.

© 2017 Brother Industries, Ltd. All rights reserved.



[brother DCP-B7530DN Scanner Driver and Software Printer](#) [pdf] User Guide
DCP-B7530DN Scanner Driver and Software Printer, DCP-B7530DN, Scanner Driver and Softw
are Printer, Driver and Software Printer, Software Printer, Printer

References

- [Brother Solutions Center](#)
- [\(\)](#)
- [User Manual](#)

[Manuals+](#), [Privacy Policy](#)

This website is an independent publication and is neither affiliated with nor endorsed by any of the trademark owners. The "Bluetooth®" word mark and logos are registered trademarks owned by Bluetooth SIG, Inc. The "Wi-Fi®" word mark and logos are registered trademarks owned by the Wi-Fi Alliance. Any use of these marks on this website does not imply any affiliation with or endorsement.