




brother DCP-1200W Compact 3-In-1 Mobile Managed Color Inject Printer User Guide

[Home](#) » [Brother](#) » brother DCP-1200W Compact 3-In-1 Mobile Managed Color Inject Printer User Guide 

Contents

- [1 brother DCP-1200W Compact 3-In-1 Mobile Managed Color Inject Printer](#)
- [2 Unpack the machine and check the components](#)
- [3 Quick Setup Guide](#)
- [4 Documents / Resources](#)
- [5 Related Posts](#)



brother DCP-1200W Compact 3-In-1 Mobile Managed Color Inject Printer

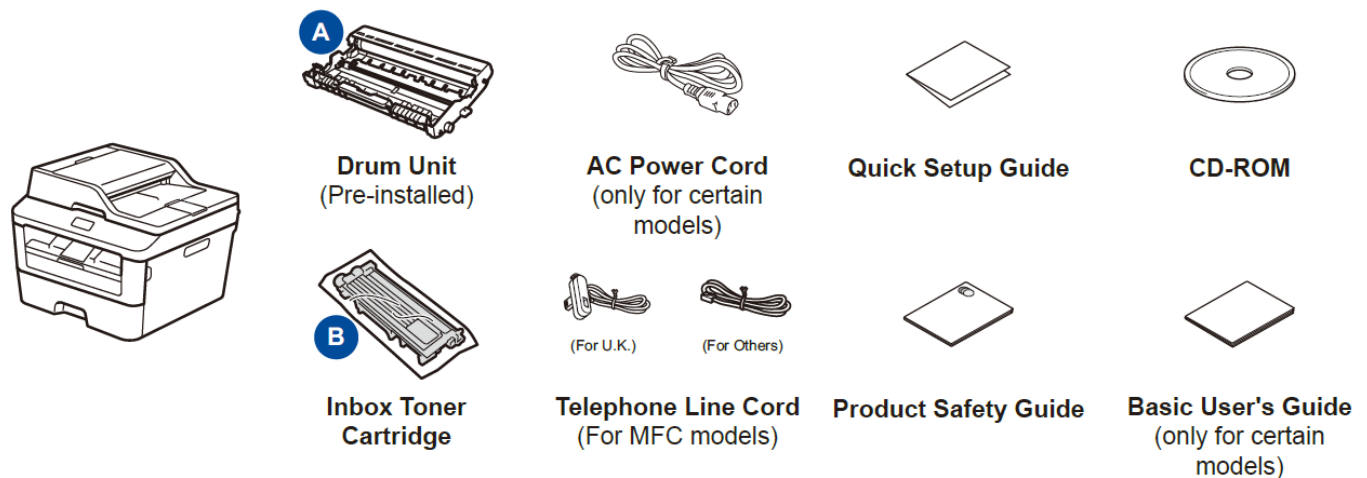


Not all models are available in all countries.

The latest manuals are available at the Brother Solutions Center: solutions.brother.com/manuals

Watch our FAQ Videos for help with setting up your Brother machine: solutions.brother.com/videos

Unpack the machine and check the components



Read the Product Safety Guide first, then read this Quick Setup Guide for the correct installation procedure.

NOTE:

- The components included in the box and the AC power plug may differ depending on your country.
- The illustrations in this Quick Setup Guide are based on the MFC-L2740DW.
- You must purchase the correct interface cable for the interface you want to use.

USB cable

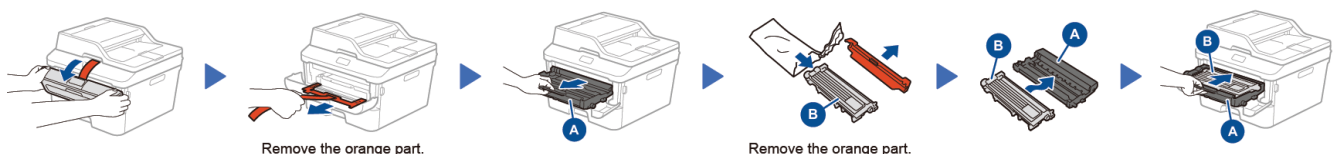
Use a straight-through Category 5 (or greater) twisted-pair cable for 10BASE-T or 100BASE-TX Fast Ethernet Network.

Secure Network Access

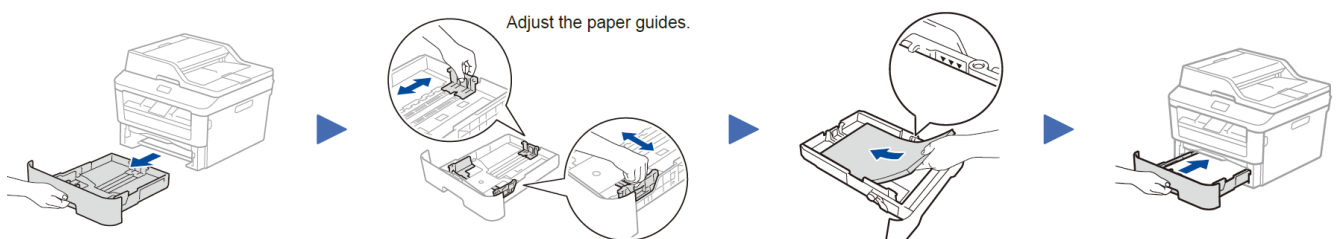
Your machine's default password is on the label on the back of the machine (preceded by "Pwd"). We strongly recommend you change it to protect your machine from unauthorised access.

Quick Setup Guide

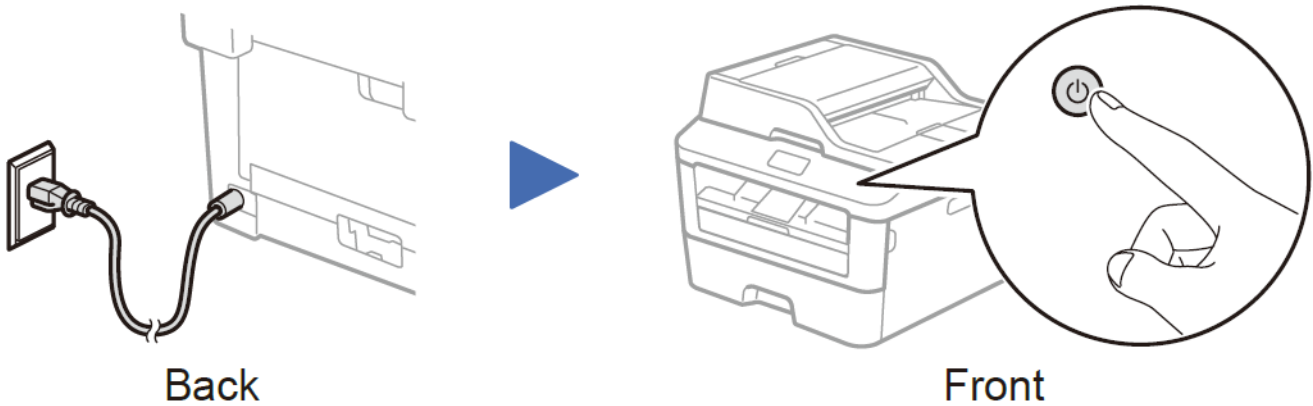
1. Remove the packing materials and install the toner cartridge



2. Load paper in the paper tray



3. Connect the power cord and turn on the machine



4. Select your country/language (Initial setup only)

After turning on the machine, you may be required to set your country or language (depending on your machine).

If required, follow the on-screen instructions.

5. Select your language (If needed) (Only for certain models)

1. On the machine's Touchscreen, press (Settings) > All Settings > Initial Setup > Local Language.
2. Press your language.
3. Press .

6. Connect the machine to your computer/mobile device

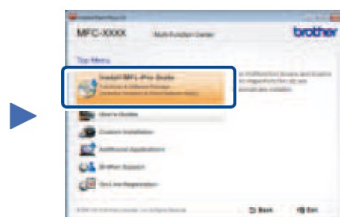
- Windows® PC with a CD-ROM drive, go to step 6A
- Windows® PC without a CD-ROM drive, go to step 6B
- Macintosh, go to step 6B
- Mobile device users, go to step 6C

Configuration using the CD-ROM (Windows®)



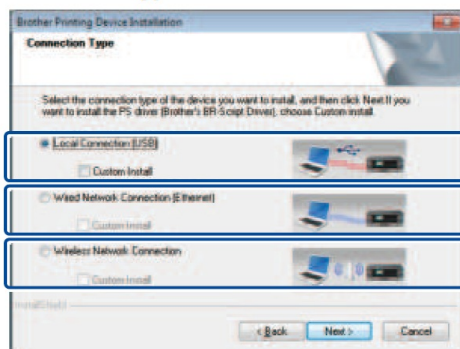
NOTE:

If the Brother screen does not appear automatically, go to **Computer (My Computer)**.
(For Windows® 8: click the (File Explorer) icon on the taskbar, and then go to **Computer**.)
Double-click the CD-ROM icon, and then double-click **start.exe**.



Follow the on-screen instructions until the **Connection Type** screen appears.

Connection Type



For USB Connection

For Wired Network Connection
Connect a network cable first.

For Wireless Network Connection
We recommend preparing a USB cable to use temporarily during the wireless setup.

Follow the on-screen instructions to continue installation.

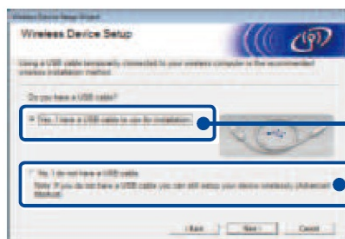
Finish

NOTE:

If connection is unsuccessful, repeat this step.



Wireless Network Connection



[Recommended]

Select this option if you have a USB cable to use temporarily for wireless setup.

Select this option if you do not have a USB cable.

Follow the on-screen instructions to continue installation.

Finish

NOTE:

If connection is unsuccessful, repeat this step.

Configuration without using the CD-ROM (Windows® without CD-ROM drive or Macintosh)

Download the full driver and software package from the Brother Solutions Center.

(For Windows®) solutions.brother.com/windows

(For Macintosh) solutions.brother.com/mac

After you download the driver and software package, follow the on-screen instructions until the Connection Type screen appears. Refer to 6A Configuration using the CD-ROM (Windows®).

Wireless setup for mobile devices

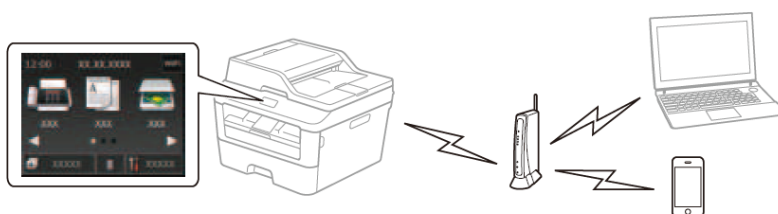
Connect the machine and wireless LAN access point/router from the machine's control panel.

Connect the machine and wireless LAN access point/router from the machine's control panel.

On the machine's control panel, press
Setup > Setup Wizard > Yes.

Select the specified SSID, and then enter the Network key.

Wireless setup is now complete.



NOTE:

Before you can use your machine with your mobile device, download "Brother iPrint&Scan."

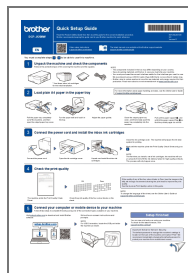
NOTE: Before you can use your machine with your mobile device, download "Brother iPrint&Scan."

Print and scan using your mobile device

Download "Brother iPrint&Scan" to start using your machine with mobile devices.

solutions.brother.com/ips

Documents / Resources



[brother DCP-1200W Compact 3-In-1 Mobile Managed Color Inject Printer](#) [pdf] User Guide
DCP-1200W, Compact 3-In-1 Mobile Managed Color Inject Printer