

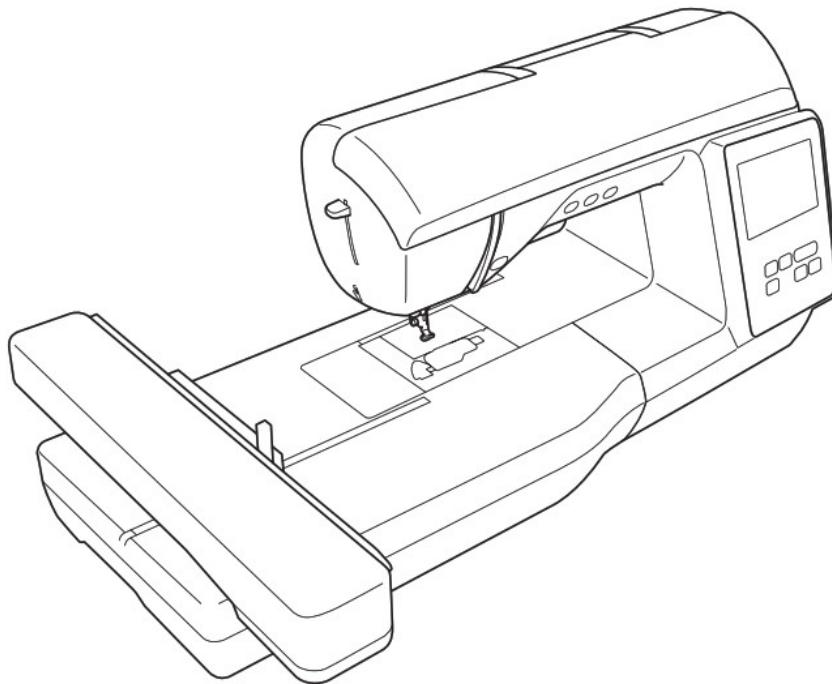


brother Automatic Bobbin Winding Sewing Machine User Guide

[Home](#) » [Brother](#) » brother Automatic Bobbin Winding Sewing Machine User Guide 

brother

QUICK Reference Guide



Be sure to read this document before using the machine. We recommend that you keep this document nearby for future reference.

Before using your machine for the first time please read the “IMPORTANT SAFETY INSTRUCTIONS” in the Operation Manual.

Refer to the Operation Manual for detailed instructions.

In this guide, English screens are used for basic explanations.

For details on the built-in embroidery patterns, refer to the Embroidery Design Guide.

Contents

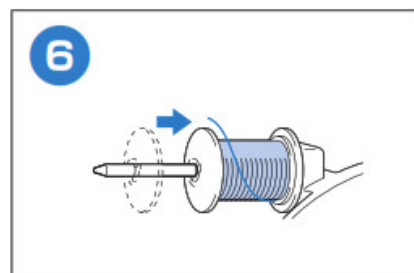
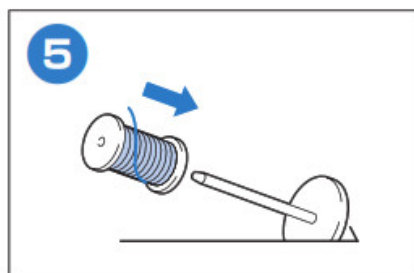
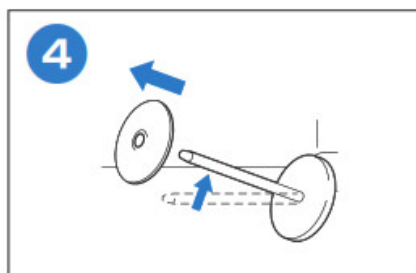
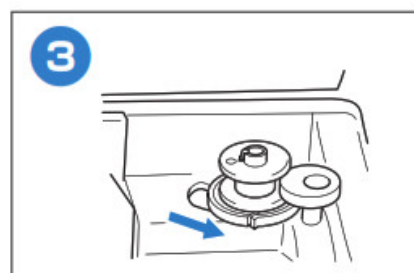
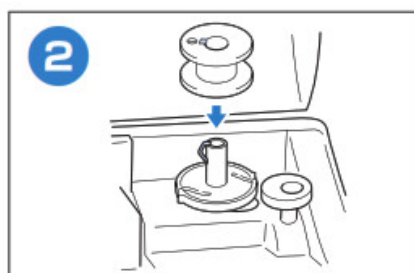
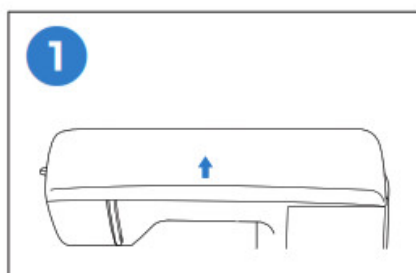
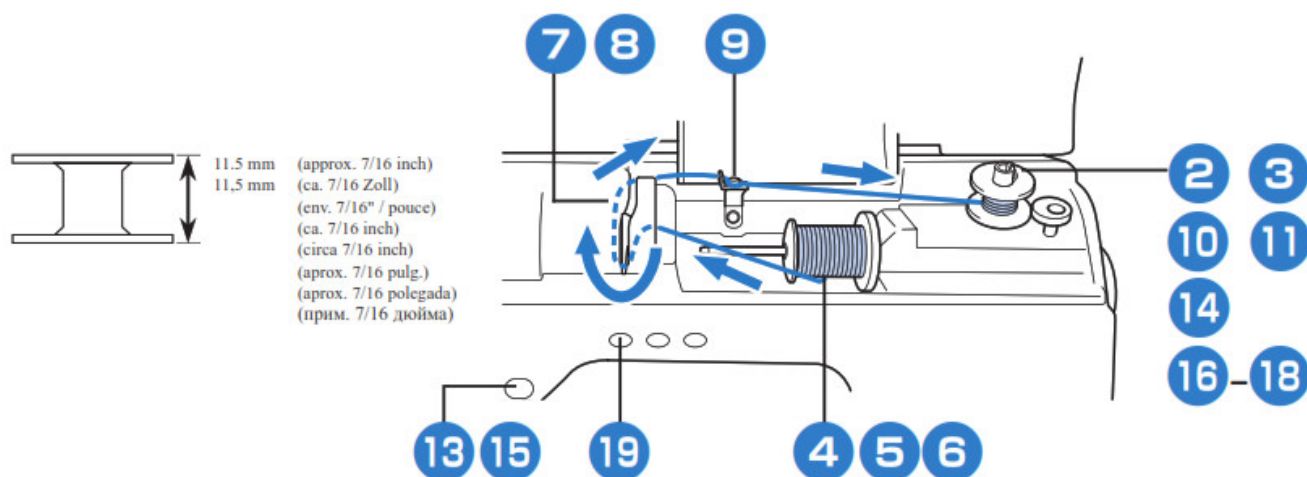
- 1 Bobbin Winding and Setting
- 2 Upper Threading
- 3 Preparing to Embroider
- 4 Selecting Embroidery Patterns
- 5 Documents / Resources
- 6 Related Posts

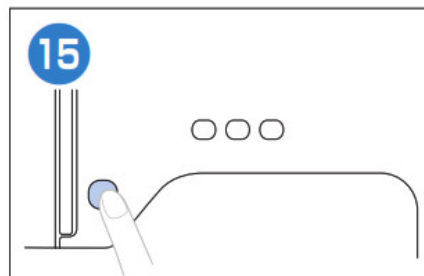
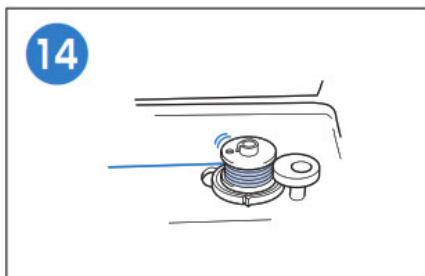
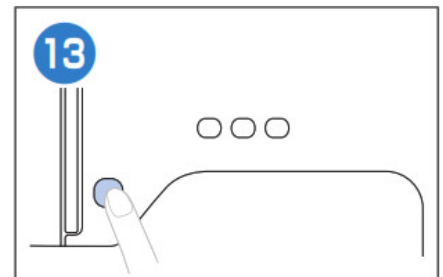
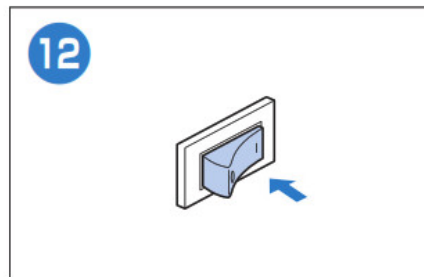
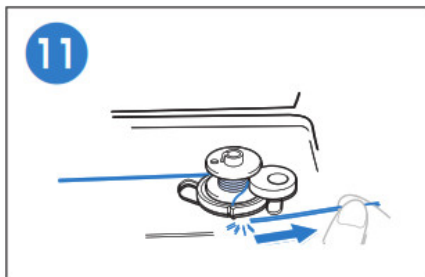
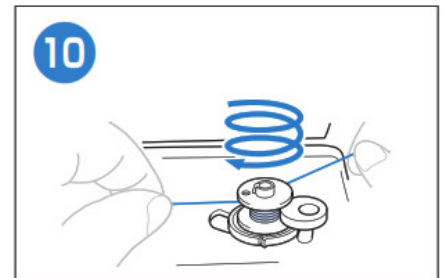
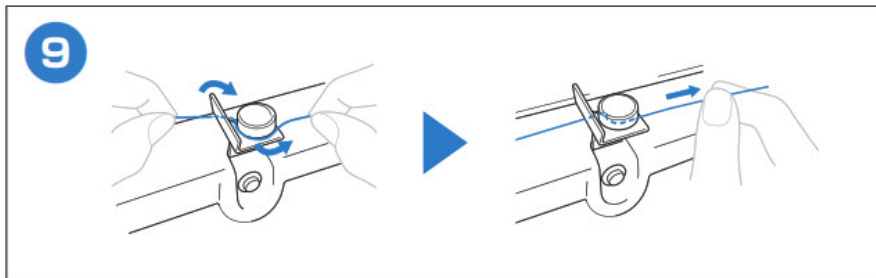
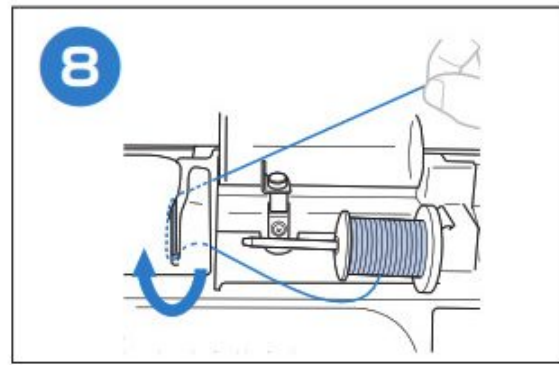
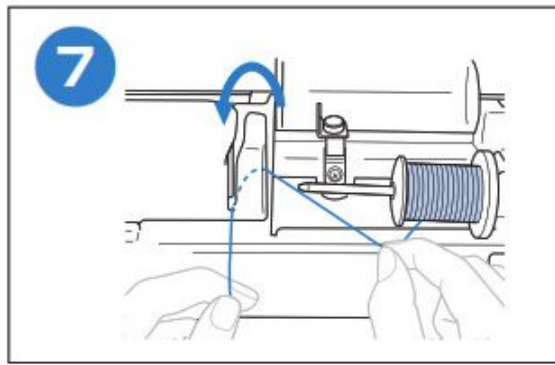


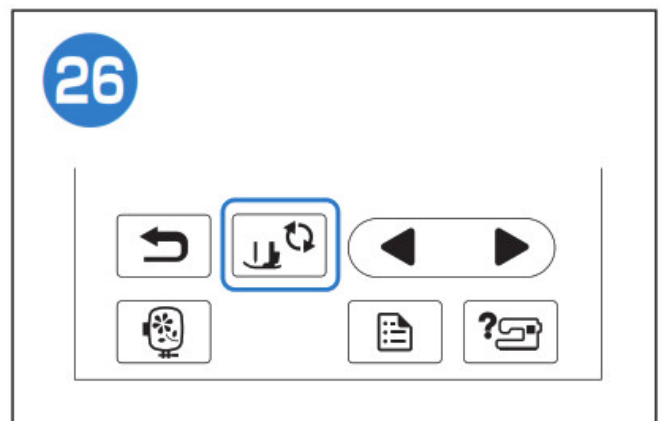
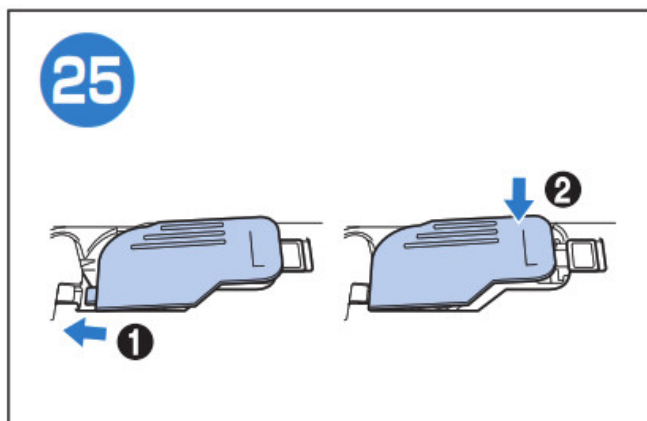
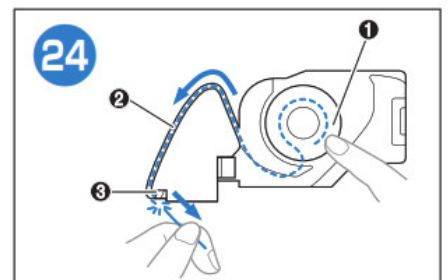
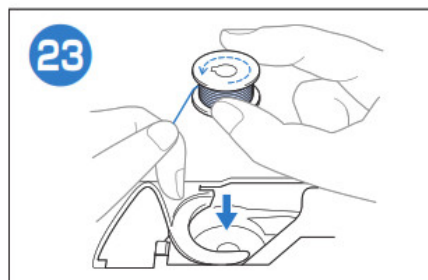
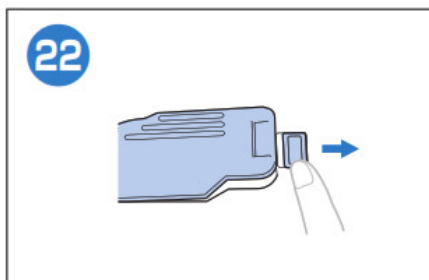
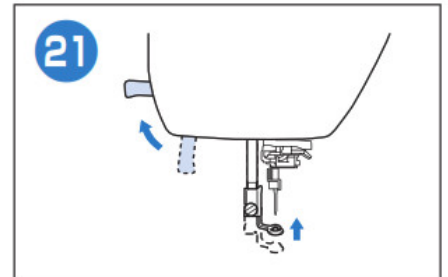
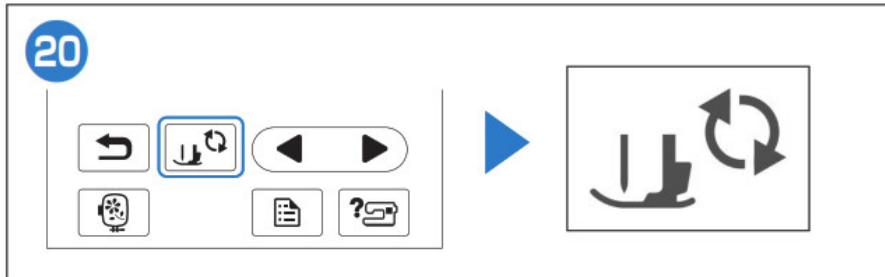
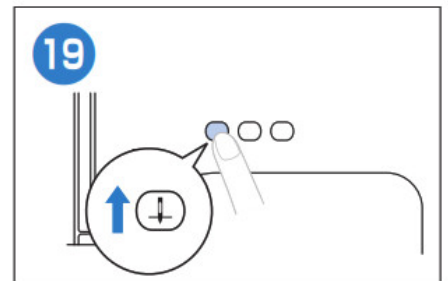
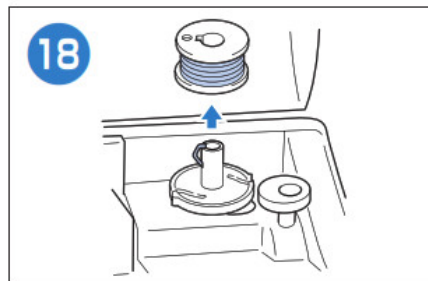
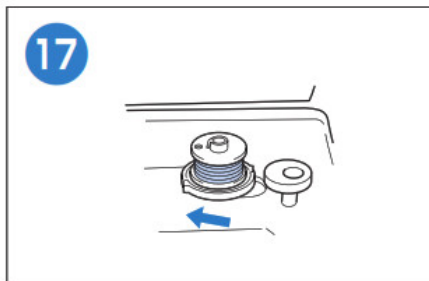
Bobbin Winding and Setting

Follow the steps below in numerical order. Refer to the Operation Manual for detailed instructions.

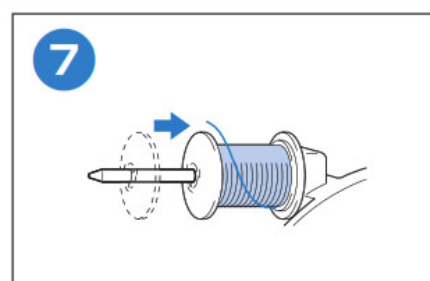
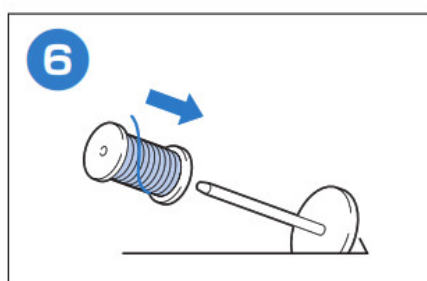
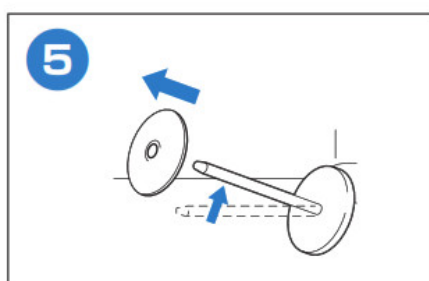
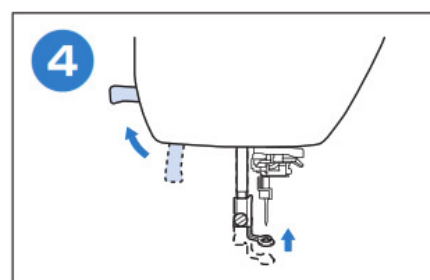
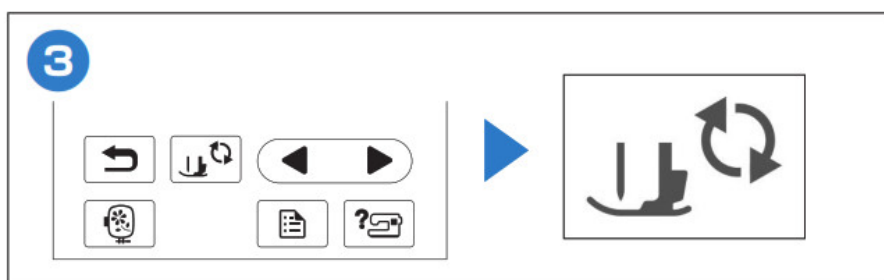
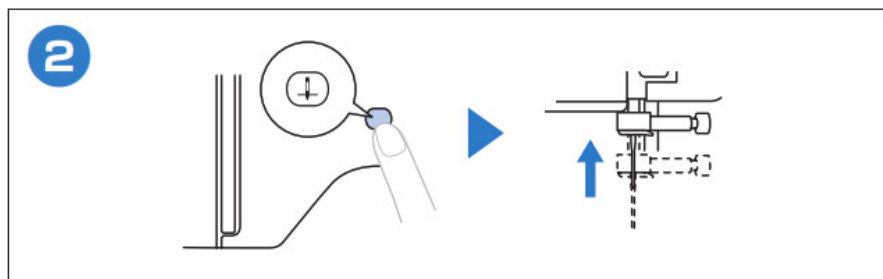
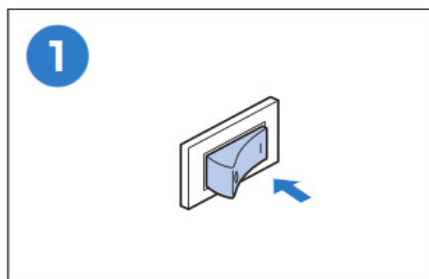
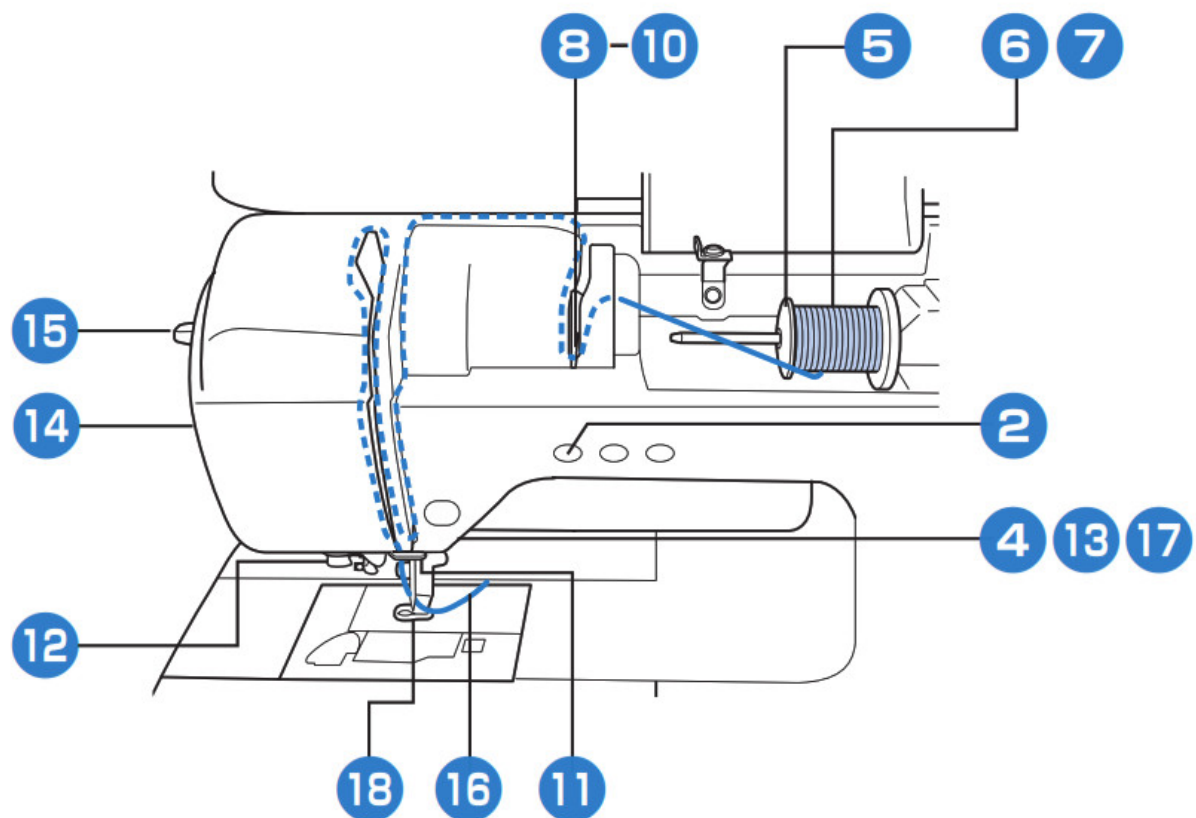
Use only the included bobbin of the same type

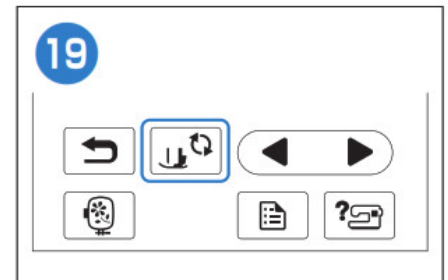
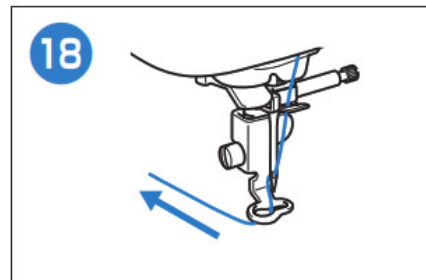
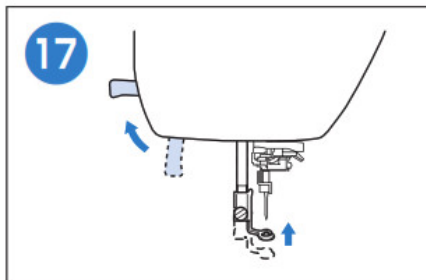
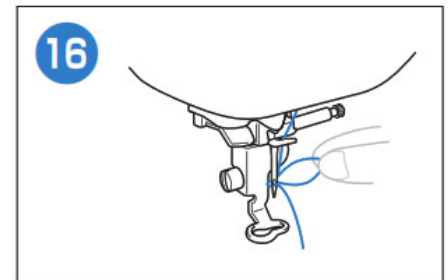
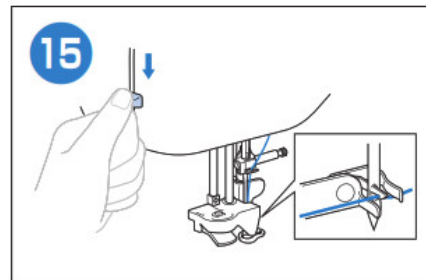
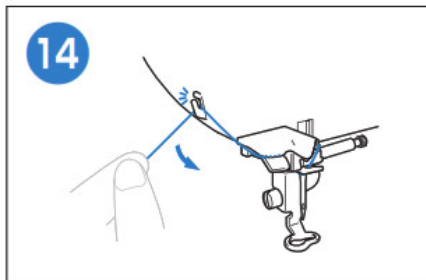
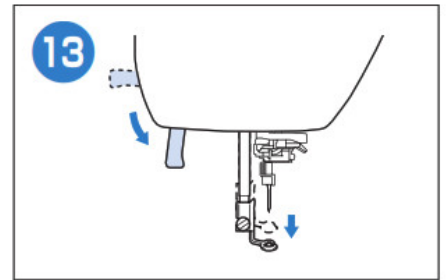
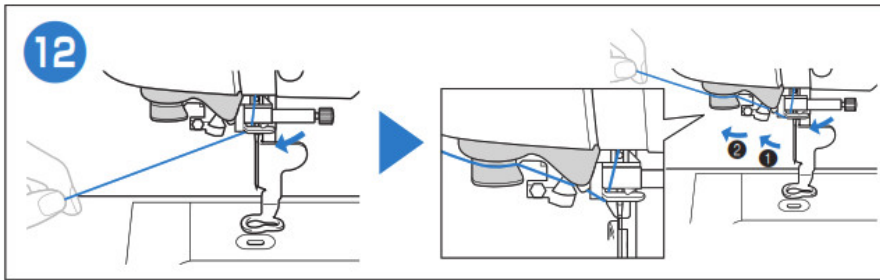
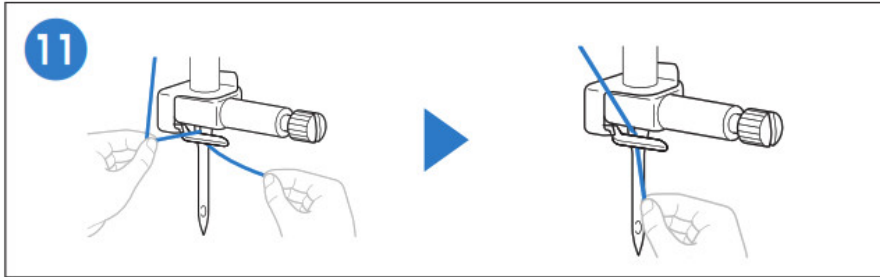
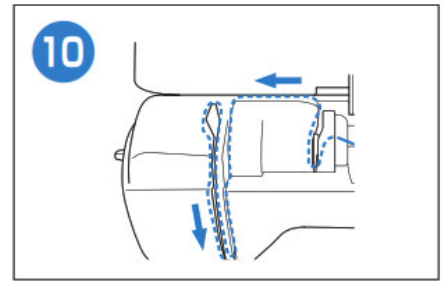
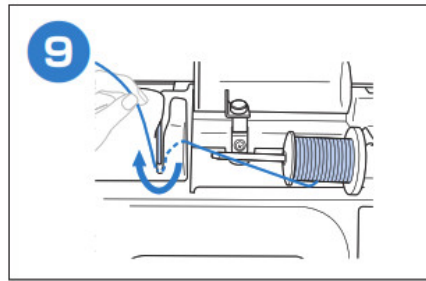
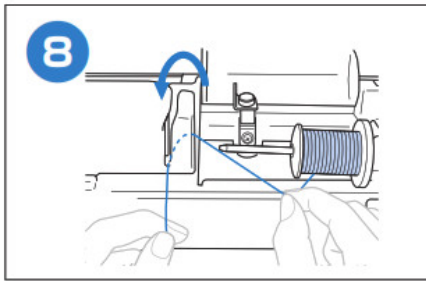




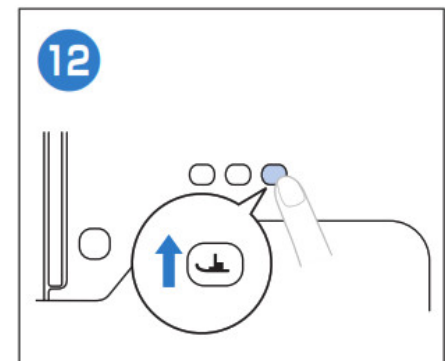
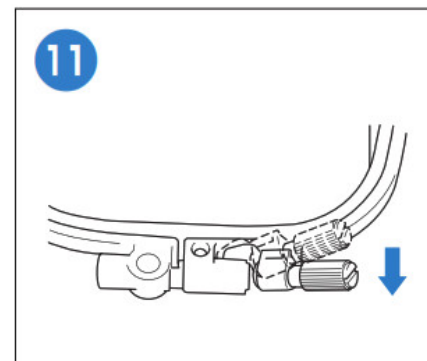
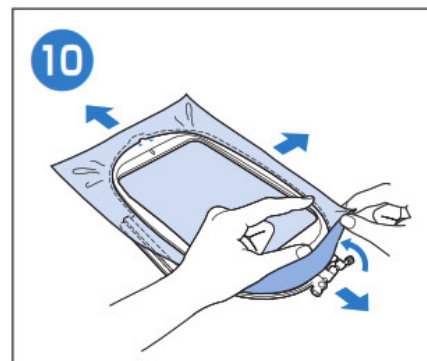
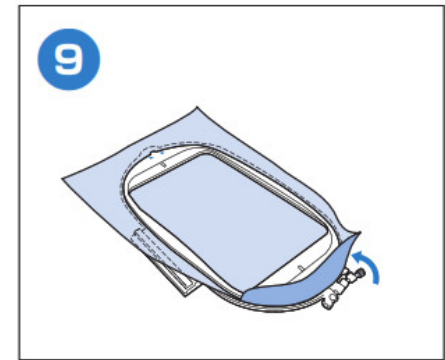
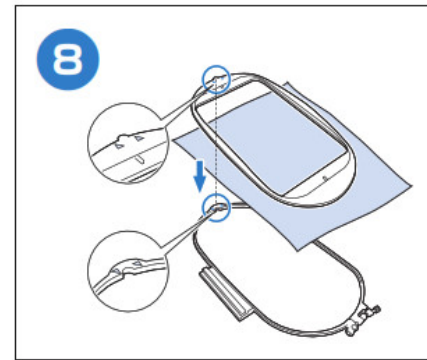
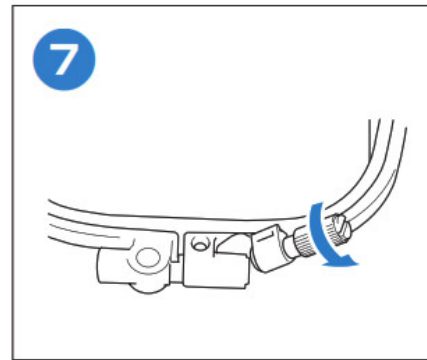
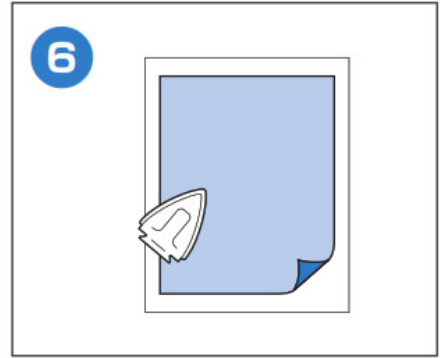
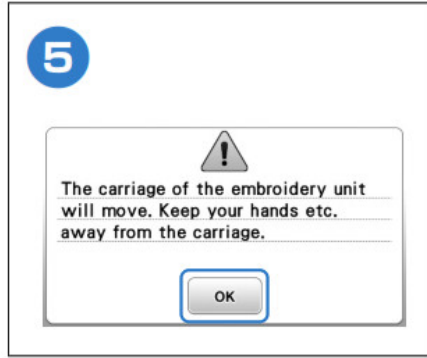
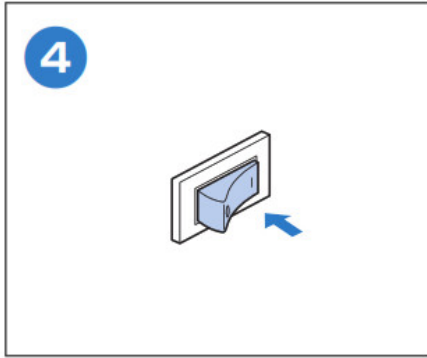
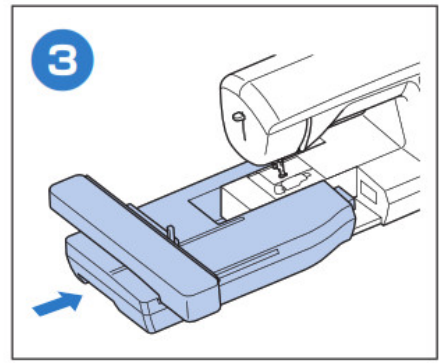
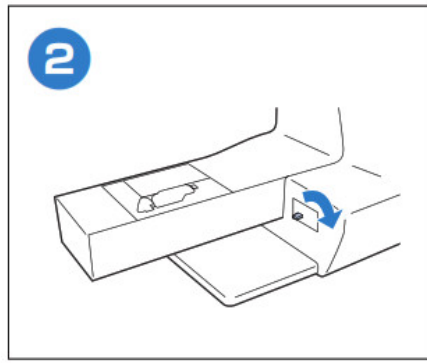
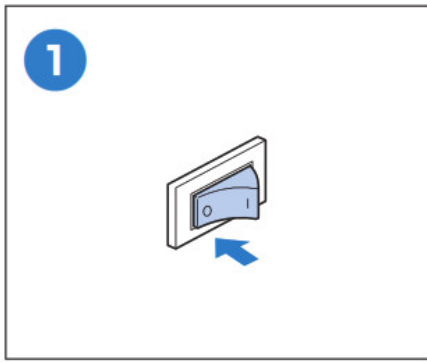


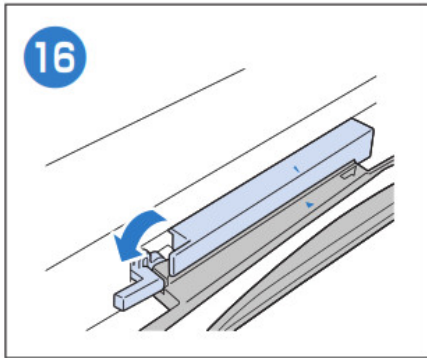
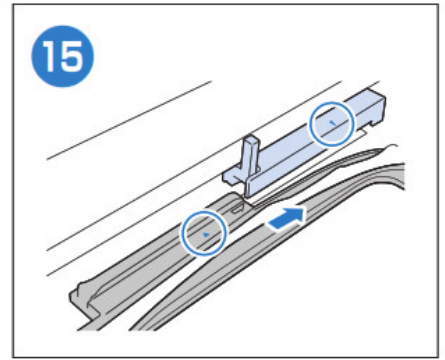
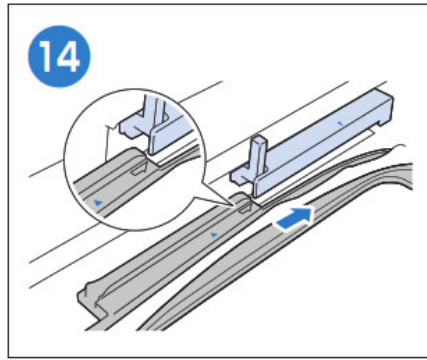
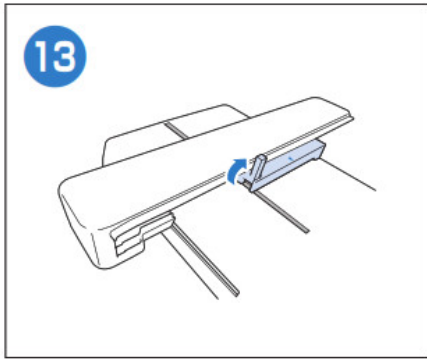
Upper Threading





Preparing to Embroider





Selecting Embroidery Patterns

