



## Brookstone BKWIFICAMWL1 WiFi Hidden Security Camera User Manual

[Home](#) » [Brookstone](#) » Brookstone BKWIFICAMWL1 WiFi Hidden Security Camera User Manual 

# Brookstone®

WiFi Hidden Security Camera  
USER MANUAL



### FCC Statement:

1. This device complies with Part 15 of the FCC Rules. Operation is subject to the following two conditions: (1) this device may not cause harmful interference, and (2) this device must accept any interference received, including interference that may cause undesired operation.

**Caution:** The user is cautioned that changes or modifications not expressly approved by the party responsible for compliance could void the user's authority to operate the equipment.

**Note:** This equipment has been tested and found to comply with the limits for a Class B digital device, pursuant to part 15 of the FCC Rules. These limits are designed to provide reasonable protection against harmful interference in a residential installation. This equipment generates uses and can radiate radio frequency energy and, if not installed and used in accordance with the instructions, may cause harmful interference to radio communications. However, there is no guarantee that interference will not occur in a particular installation. If this equipment does cause harmful interference to radio or television reception, which can be determined by turning the equipment off and on, the user is encouraged to try to correct the interference by one or more of the following measures:

- Reorient or relocate the receiving antenna.
- Increase the separation between the equipment and receiver.
- Connect the equipment into an outlet on a circuit different from that to which the receiver is connected.
- Consult the dealer or an experienced radio/TV technician for help.

2. This equipment complies with FCC radiation exposure limits set forth for an uncontrolled environment. This equipment should be installed and operated with a minimum distance of 20cm between the radiator and any part of your body.

For more products please visit [www.brookstone.com](http://www.brookstone.com)

## Contents

- 1 WARRANTY INFORMATION
- 2 SPECIFICATIONS
- 3 FEATURES
- 4 PRODUCT CONFIGURATION
- 5 DOWNLOAD APP
- 6 REGISTRATION AND LOGIN
- 7 PUSH NOTIFICATIONS
- 8 REMOVE A DEVICE
- 9 ADD THE DEVICE
- 10 APP FUNCTIONS
- 11 Documents / Resources
  - 11.1 References
- 12 Related Posts

## WARRANTY INFORMATION

One Year Limited Warranty.

Customer Service: 732-994-2301; email: [help@smartpointco.com](mailto:help@smartpointco.com)

The BROOKSTONE trademark, names, and logos are owned by BKST Brand Holdings LLC ©2021. All rights reserved Manufactured, marketed, and distributed by Smartpoint LLC, under license Google, Android, and Google Play are trademarks of Google LLC. App Store® is a registered trademark of Apple, Inc All trademarks and Registered trademarks are property of their respective owners Made in China

## SPECIFICATIONS

Model: BkWIFICAMWL1

Resolution: 1920×1080

Alarm: Motion detection

Viewing Angle: 70°

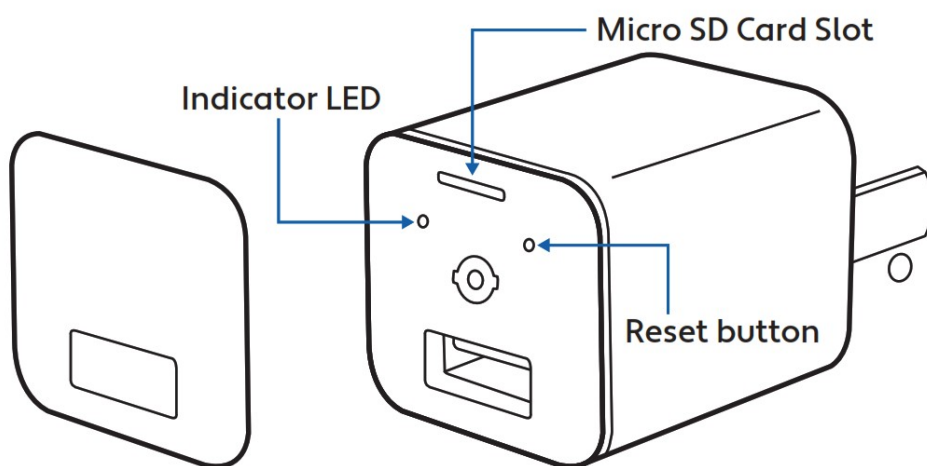
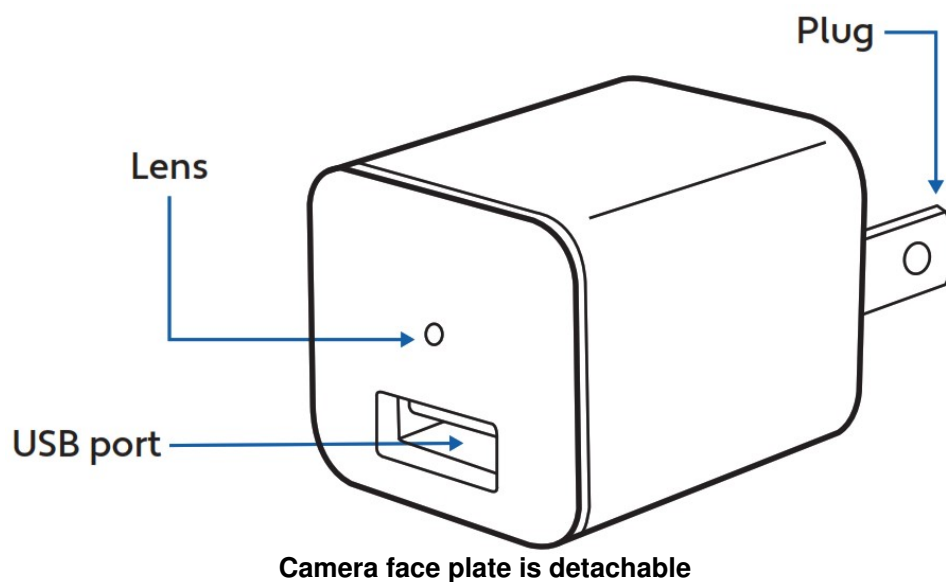
Audio: Microphone built-in

Micro SD Card Storage: Up to 128GB  
Power Supply: AC100-240V  
Power Output: DC5V / 1A  
Wireless Type: Wi-Fi 2.4GHz  
Operating System:  
Android™ 8.0 or higher, iOS 7.0 or higher

## FEATURES

- Wi-Fi remote controlled through App
- Hidden appearance(looks like USB block)
- Cordless, plugs directly into outlet
- Motion detection · Live video
- Video recording
- Takes still photos
- Cloud storage or Micro SD Card storage

## PRODUCT CONFIGURATION



### Items included in package:

Hidden Security Camera, 2 Detachable Face Plates, and User Manual.

## DOWNLOAD APP

1. Android: download “Brookstone Smart” app on Google Play.
2. iPhone: download “Brookstone Smart” app from the App Store.



Brookstone Smart



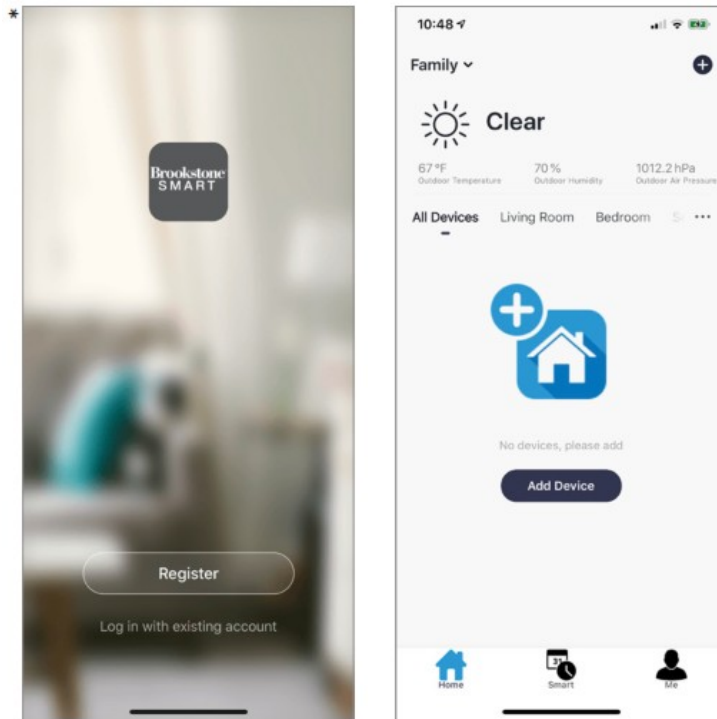
<https://itunes.apple.com/cn/app/brookstone-smart/id1456388657?l=en&mt=8>



<https://play.google.com/store/apps/details?id=com.brookstone.smart>

## REGISTRATION AND LOGIN

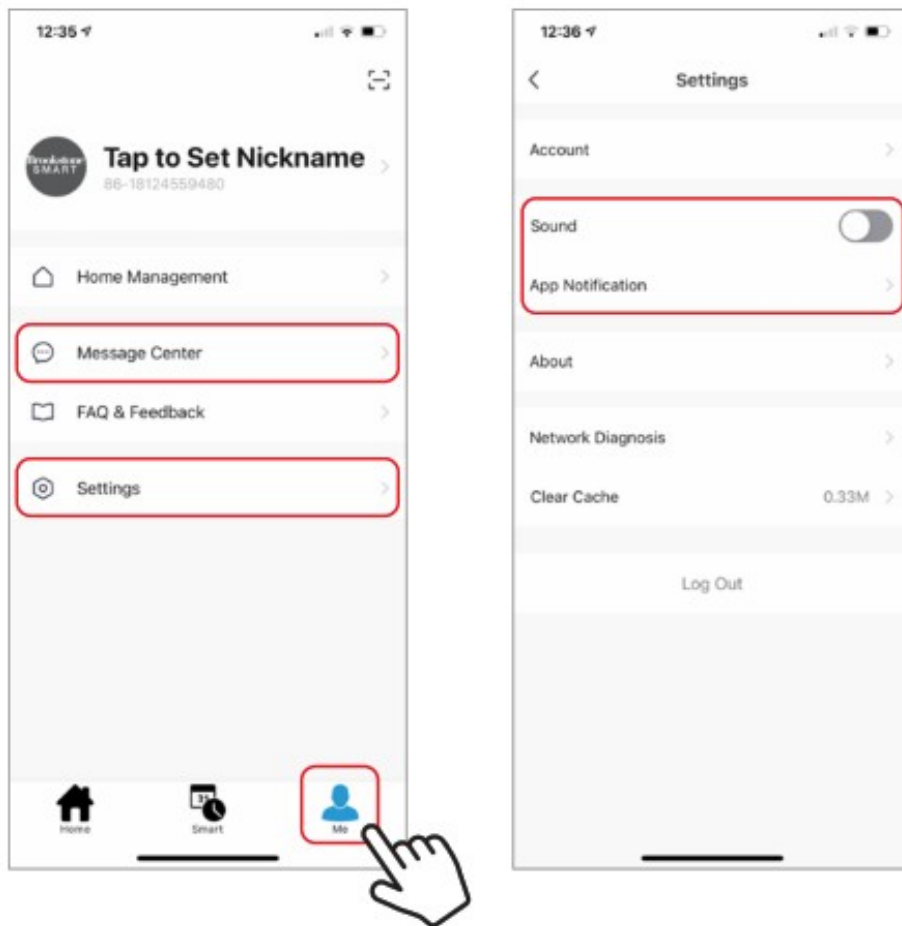
1. Run the “Brookstone Smart” app from your smart phone.
2. Register and login.



\*Screenshots may slightly differ from actual app.

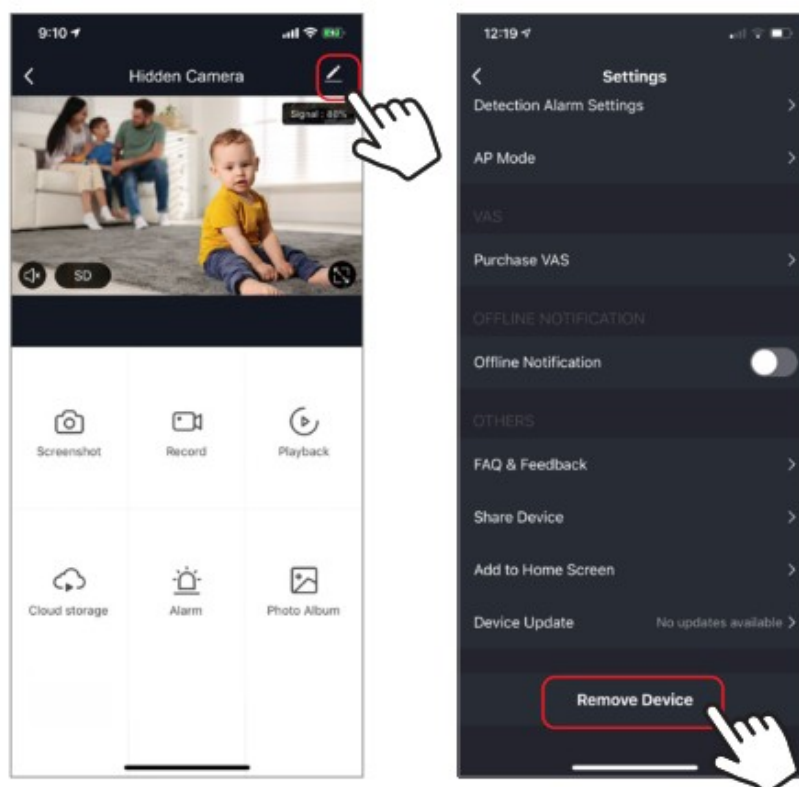
## PUSH NOTIFICATIONS

1. You can turn on/off notifications for all devices connected to app by clicking on the “Me” button at the bottom right of the screen.
2. Then click on “Settings” button. From there you can turn on/off all notifications.
3. To view notifications in the app, click on “message center” on the “me” tab on the bottom.
4. To turn on/off notifications for just the camera



## REMOVE A DEVICE

1. From the home screen, click on the device you would like to remove.
2. Then click on the edit symbol on the top right of the screen.
3. From there you would then click the “Remove Device” button at the bottom of the screen.

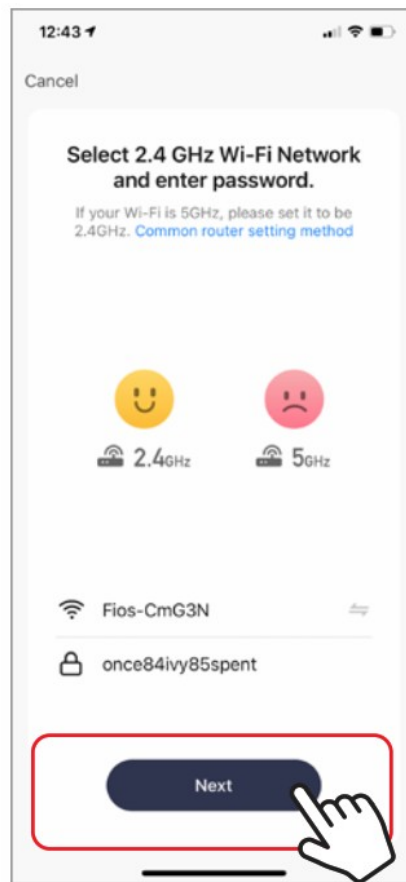
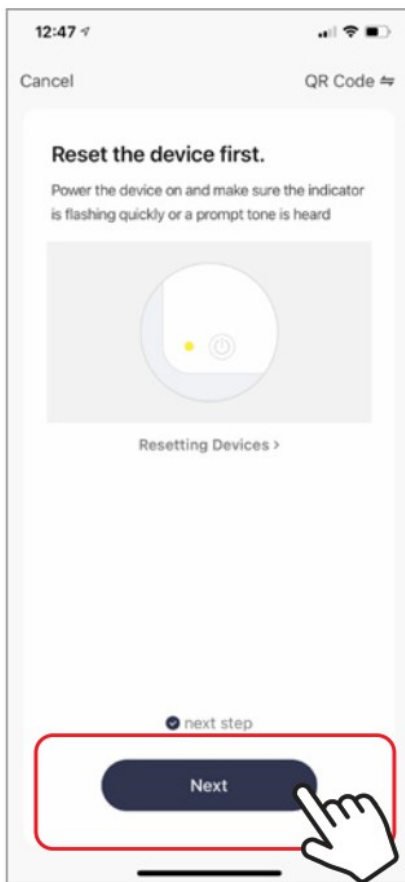


## ADD THE DEVICE

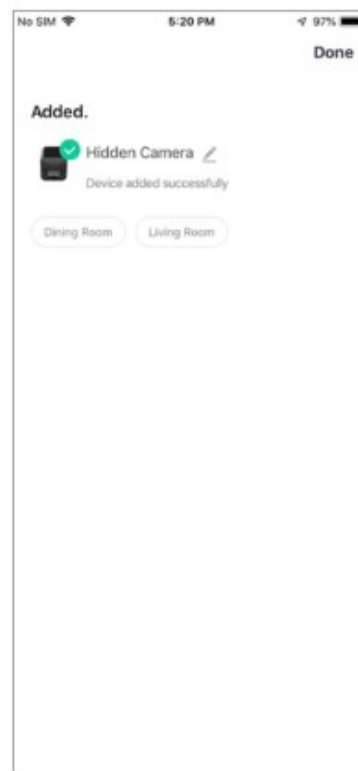
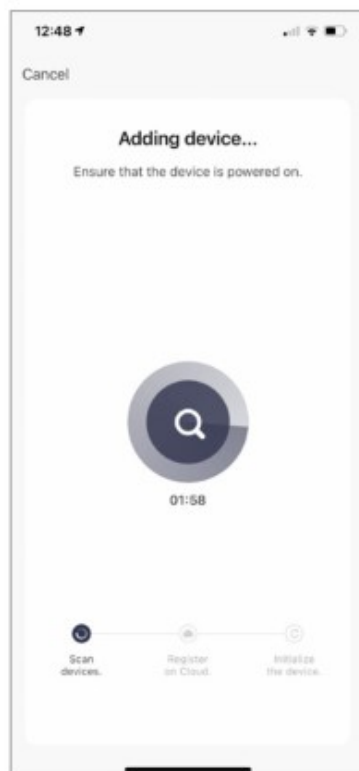
1. Make sure phone is connected to your Wi-Fi network and that it is a 2.4GHz network.
2. Remove face plate and plug Hidden Camera into the wall and wait about 75-90 seconds for blue light to flash rapidly to begin set up process. If light is not, press and hold reset button for 5 seconds and then release and wait about 75-90 seconds for light to start blinking rapidly. Camera is now ready to be set up. (Replace faceplate after set up process is complete)
3. Press the (+) symbol in the top right corner of the app and select the Smart Camera from the list of devices to add.



4. Press the “next step” button
5. Make sure phone is connected to the Wi-Fi network that the device will be connected to. Enter your password for the Wi-Fi network.
6. Follow the directions in the app and hold the QR code on the screen in front of the view of the camera.  
**SINCE THE CAMERA DOES NOT HAVE A SPEAKER YOU WILL NOT HEAR A PROMPT.** When the camera successfully reads the QR code on your screen, the blue light will stop blinking fast and start blinking slow. Then you can press “I Heard a Prompt” to continue.



7. Connecting process will begin. Do not turn off Hidden Camera or phone while connecting. Wait for connection process to complete.
8. Once device has been successfully added, name the device what you would like it to be called in the app. The Hidden Camera is ready for use.



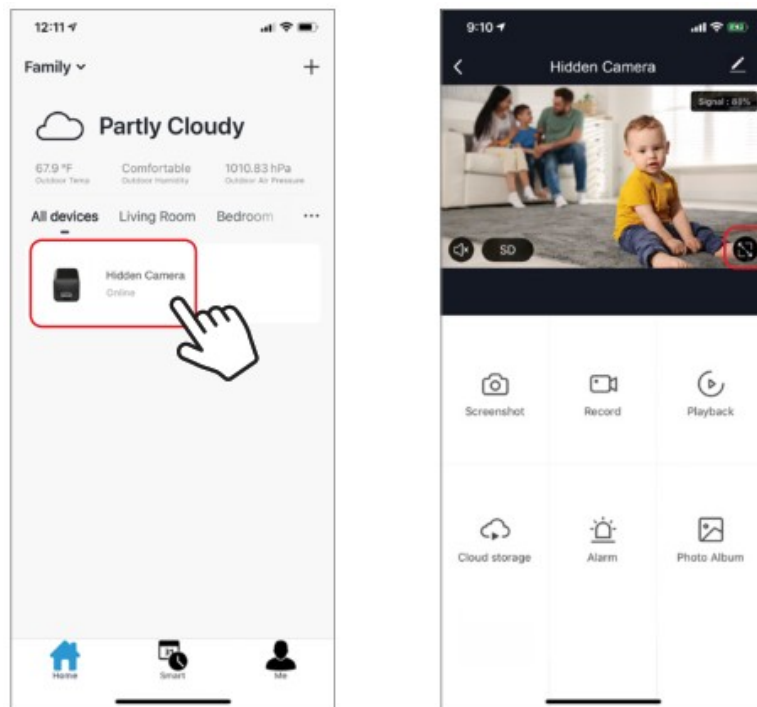
## APP FUNCTIONS

### Live Video

To view live video simply click on the device under "All devices" and you will see your live video at the top

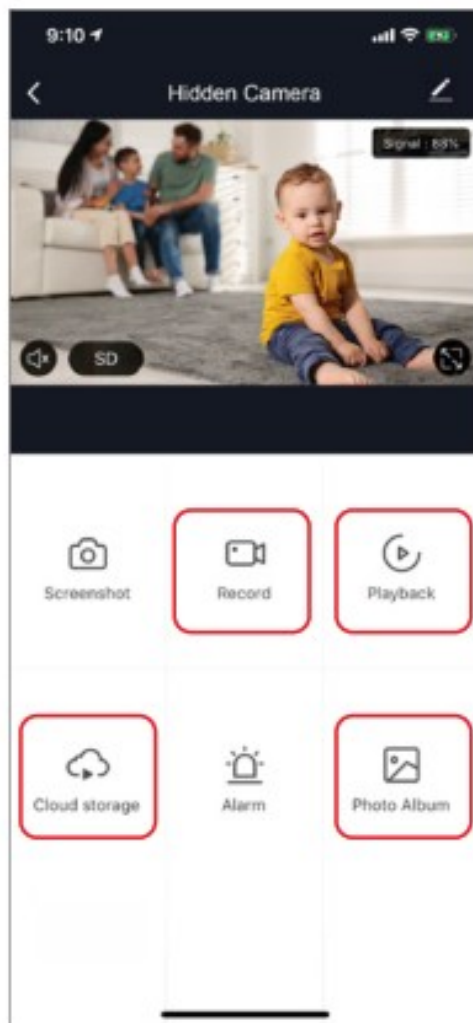


immediately. Hit the full screen button in the bottom right corner of the live video to see your live footage at full screen on your phone.



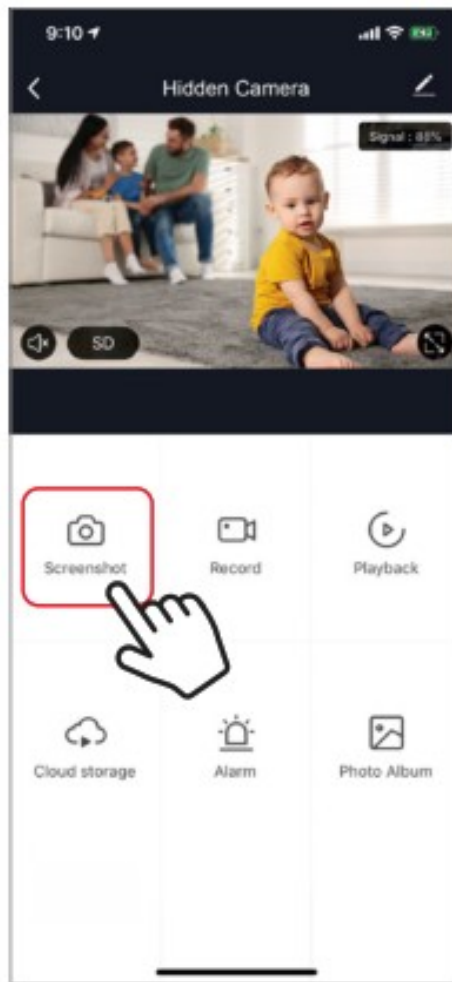
### Video Recording

To manually record video clips press the “record” button one the main camera screen. To end recording, press “record” button again. To view recordings, press the “Photo Album” button. All of the video recordings and photos you take will be here in the photo album. To view all footage that your camera has recorded, press “Playback” in you have a micro SD card in the camera. You can also purchase optional cloud storage by clicking on “Cloud Storage” if you do not have a micro SD card inserted in your camera.



### **Taking a Photo**

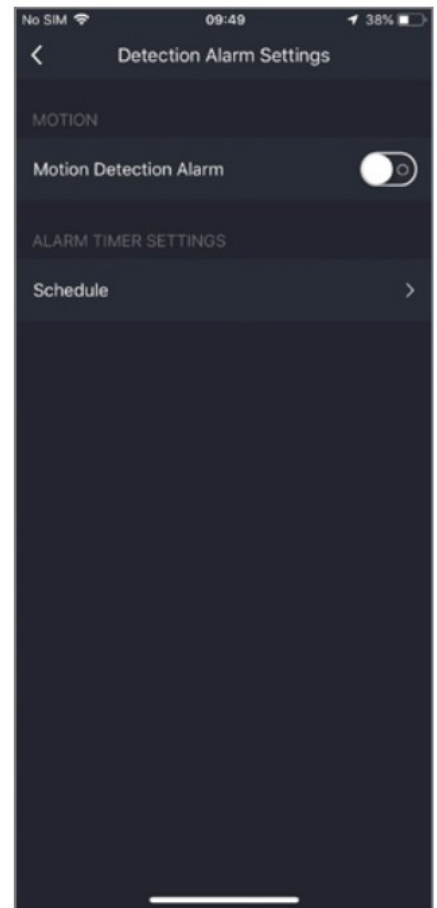
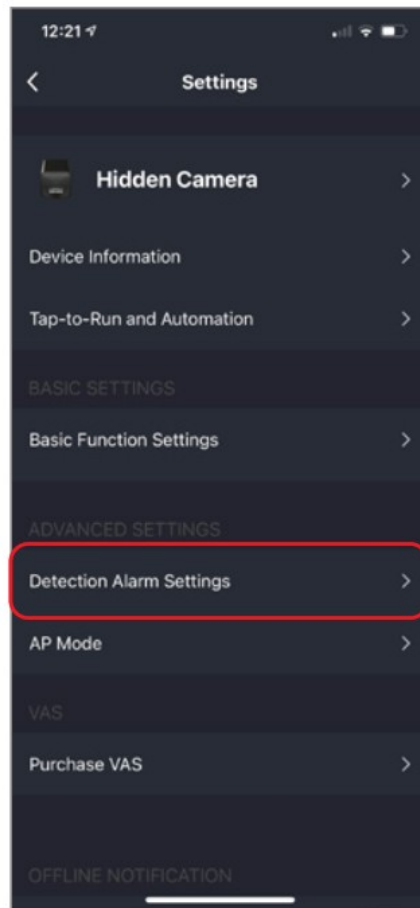
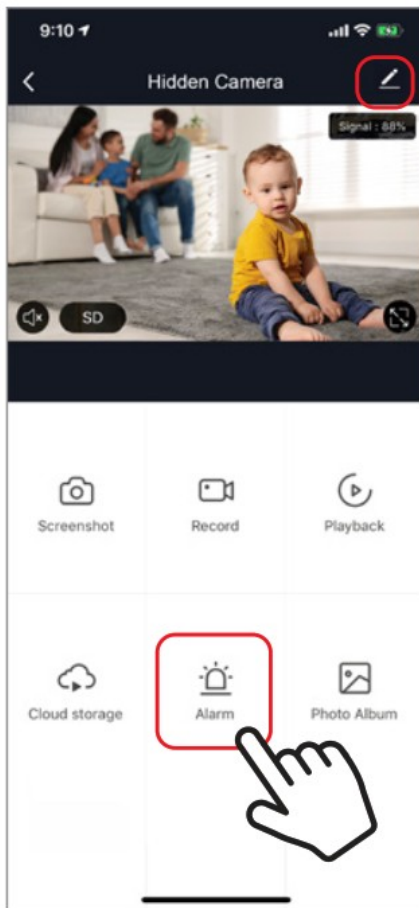
To take a photo, press "screenshot" and the photo will be saved to your phone in the photos and video section.



### **Motion Detection**

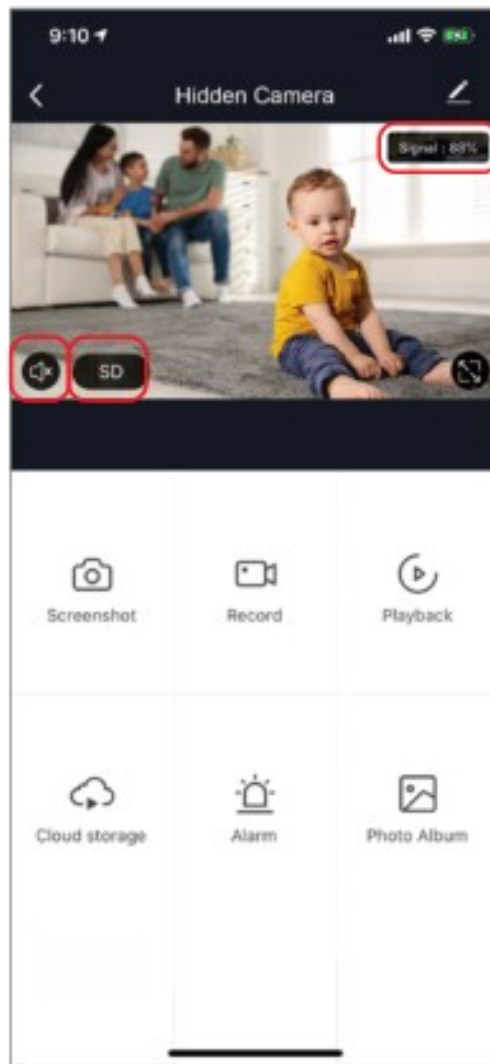
The camera uses infrared sensors when someone/something appears within its detection area. Push notifications will be sent your phone once motion is detected.

To access control of motion detection press the camera setting button at the top right. On the next page you can select "motion detection". From there you can turn it on/off and set the sensitivity setting. You can also get to this from hitting the "alarm" button on the main camera page.



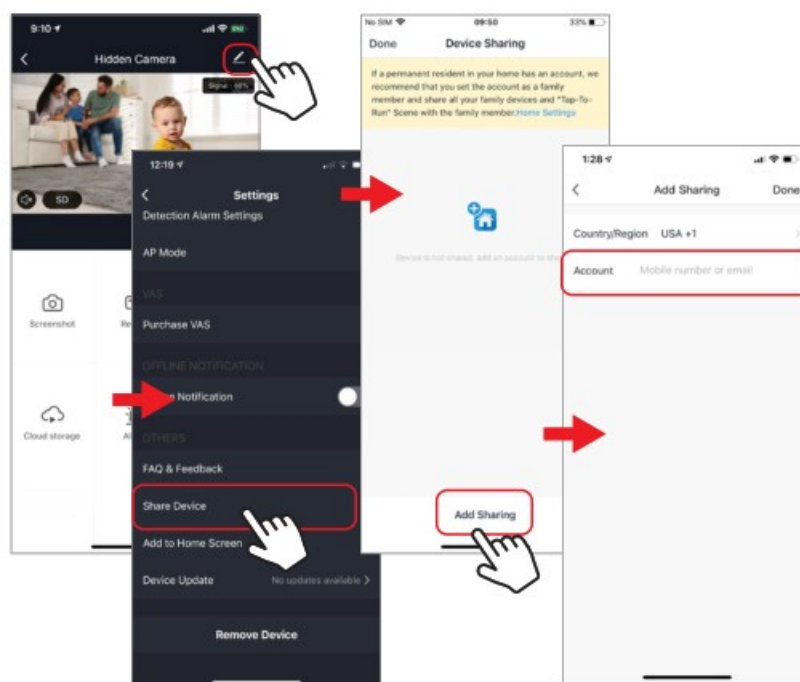
### Hub controls (sound, video quality, signal strength)

You can control features from the live video feed. There is a volume button that is used to mute and unmute the live feed(This must be set to unmute in order to record sound on manually recorded video clips). Next to that button is the video quality button and it can be used to switch between standard and high definition video. In the top right, the signal strength of the camera is shown.



### Sharing the Device

To share access to your camera with someone else's Brookstone Smart account, press the camera settings button at the top right of the main camera screen. Then hit "Share Device". On the next page press "Add Sharing" at the bottom. After that, enter the email on the person's Brookstone Smart account that you would like to share the camera with. They will get a notification to accept and after that the other person will have access to view your camera through the Brookstone Smart app on their phone.




FCC ID: 2AYUS-K231



For more products please visit [www.brookstone.com](http://www.brookstone.com)

## Documents / Resources

	<p><a href="#">Brookstone BKWIFICAMWL1 WiFi Hidden Security Camera</a> [pdf] User Manual BKWIFICAMWL1, WiFi Hidden Security Camera</p>
	<p><a href="#">Brookstone BKWIFICAMWL1 WiFi Hidden Security Camera</a> [pdf] User Manual BKWIFICAMWL1, WiFi Hidden Security Camera, Security Camera, WiFi Hidden Camera, Camera</p>

## References

- [B Message, Personal Care & Home Essentials | Brookstone](#)