



# Brookstone BKWIFICAM3 WiFi Plug-In Security Camera User Manual

[Home](#) » [Brookstone](#) » Brookstone BKWIFICAM3 WiFi Plug-In Security Camera User Manual 

## Contents

- [1 Brookstone BKWIFICAM3 WiFi Plug-In Security Camera](#)
- [2 WARRANTY INFORMATION](#)
- [3 SPECIFICATIONS](#)
- [4 FEATURES](#)
- [5 PRODUCT CONFIGURATION](#)
- [6 DOWNLOAD APP](#)
- [7 REGISTRATION AND LOGIN](#)
- [8 ADD DEVICE](#)
- [9 PUSH NOTIFICATIONS](#)
- [10 REMOVE A DEVICE](#)
- [11 APP FUNCTIONS](#)
- [12 FCC Statement](#)
- [13 Documents / Resources](#)
  - [13.1 References](#)
- [14 Related Posts](#)

# Brookstone

## Brookstone BKWIFICAM3 WiFi Plug-In Security Camera



### WARRANTY INFORMATION

**One Year Limited Warranty.**

**Customer Service:** [help@smartpointco.com](mailto:help@smartpointco.com)

The BROOKSTONE trademark, names and logos are owned by BKST Brand Holdings LLC ©2020. All rights reserved Manufactured, marketed and distributed by Smartpoint LLC, under license Alexa® is a registered trademark of Amazon, Inc Android and Google Play are trademarks of Google LLC. App Store® is a registered trademark of Apple, Inc All trademarks and registered trademarks are property of their respective owners. Made in China ©Smartpoint LLC, 250 Liberty Street Metuchen NJ, Suite 1A

### SPECIFICATIONS

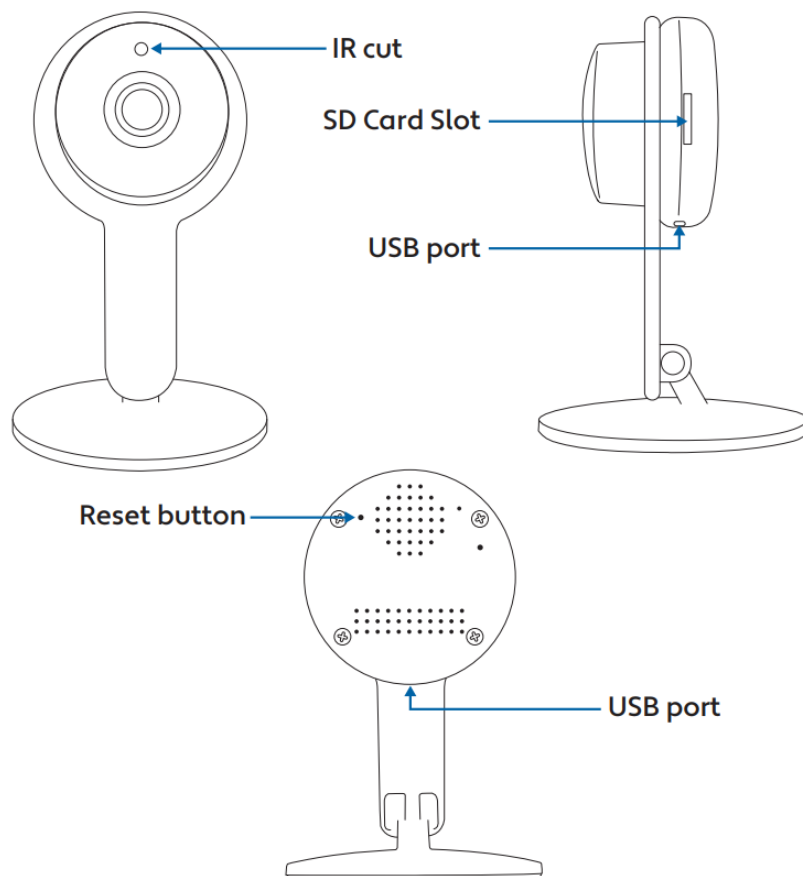
- **Model:** BKWIFICAM3
- **Resolution:** 1280×720
- **Alarm:** Motion detection
- **Night Vision:** 8-10m
- **Frame rate:** Up to 20 fps
- **Audio:** Microphone & Speaker built-in
- **TF Card Storage:** Up to 128GB
- **Effective pixels:** 1
- **megapixels Compression:** H.264
- **Power:** 5V/1A (DC)

- **Operating System:** Android 8.0 or higher, iOS 8.0 or higher

## FEATURES

- Wi-Fi remote controlled through App
- Night vision
- Motion detection
- Two-way audio
- Live video
- Video recording
- Takes still photos

## PRODUCT CONFIGURATION



### Items included in the package:

Camera, Adapter, USB Cable, Mounting Kit, and User Manual.

## DOWNLOAD APP

1. **Android:** download the “Brookstone Smart” app on Google Play.
2. **iPhone:** download the “Brookstone Smart” app from the App Store.

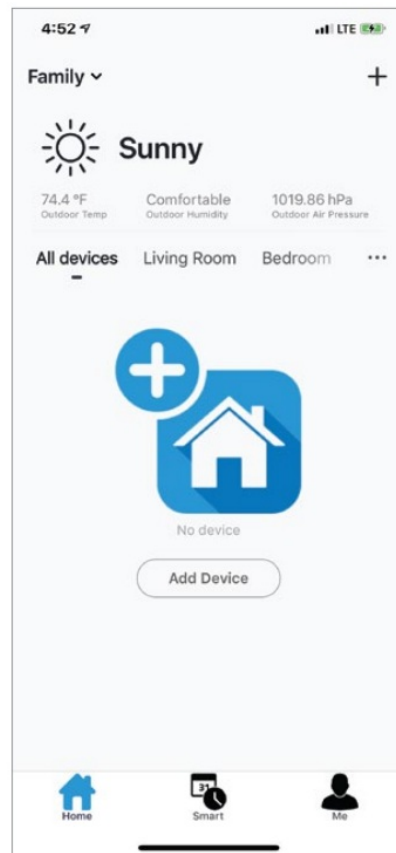
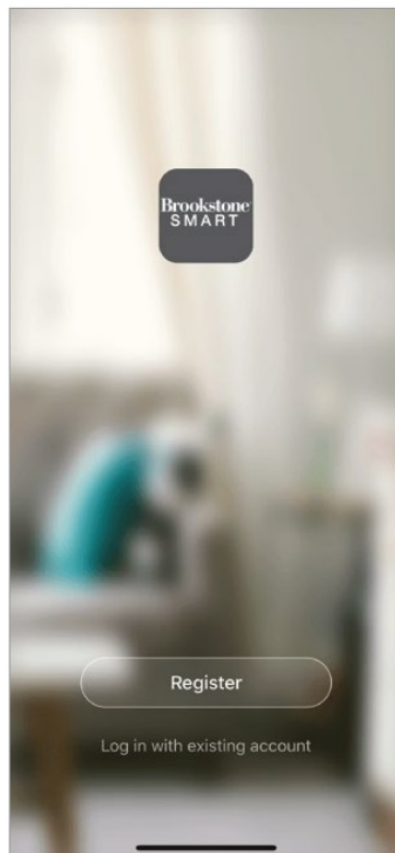


Brookstone Smart



## REGISTRATION AND LOGIN

1. Run the “Brookstone Smart” app from your smartphone.
2. Register and login.



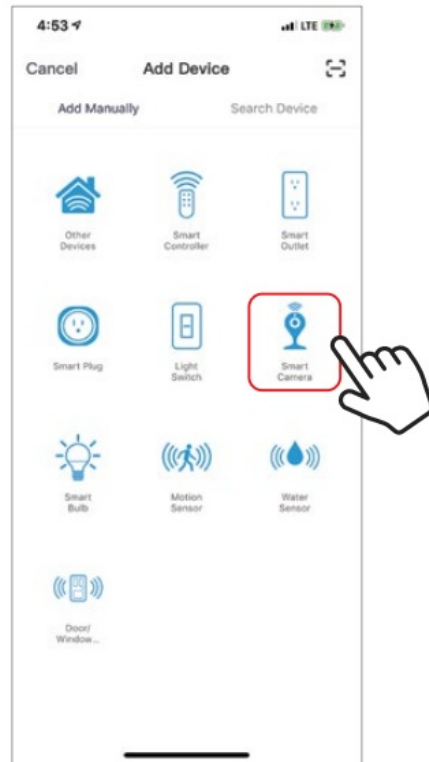
\*Screenshots may slightly differ from the actual app.

## ADD DEVICE

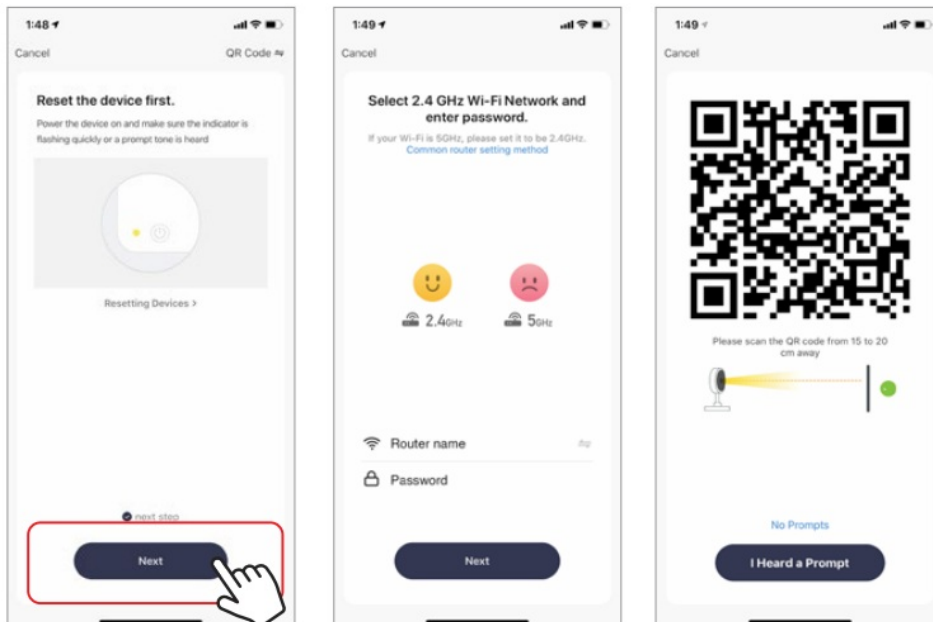
1. Plug-in Wi-Fi Camera into the wall. Press the reset button for 6 seconds, then release and wait 15- 25 seconds.

Light will start blinking and you will then hear a chime sound. The camera is now ready to be set up.

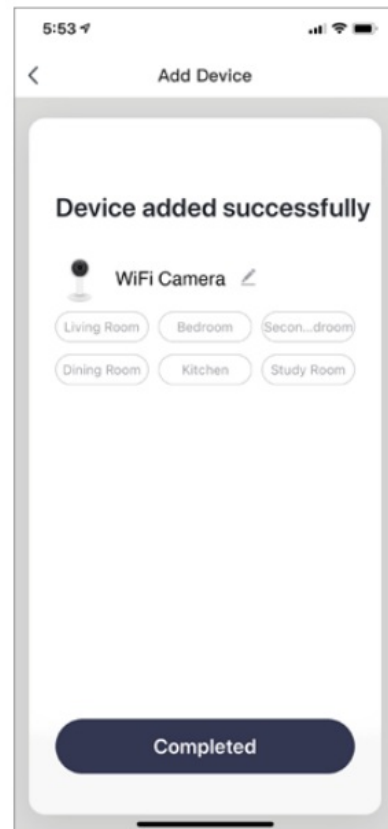
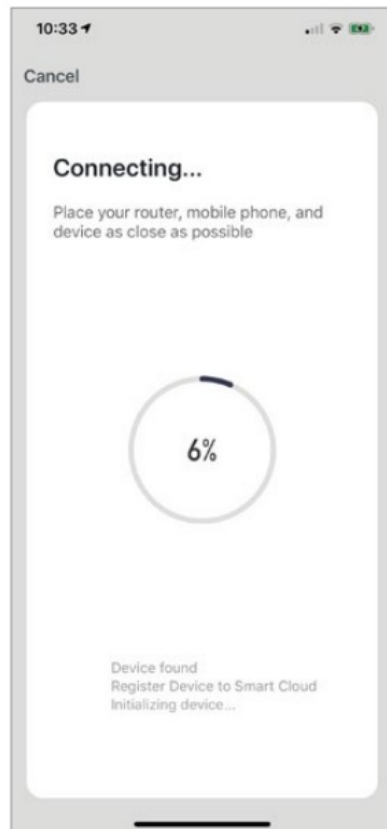
2. Make sure your phone is connected to your Wi-Fi network and that it is a 2.4GHz network.
3. Press the (+) symbol in the top right corner of the app and select the Smart Camera from the list of devices to add.



4. Press the “next step” button
5. Make sure the phone is connected to the Wi-Fi network that the device will be connected to. Enter your password for the Wi-Fi network.
6. Follow the directions in the app and hold the QR code on the screen in front of the view of the camera.

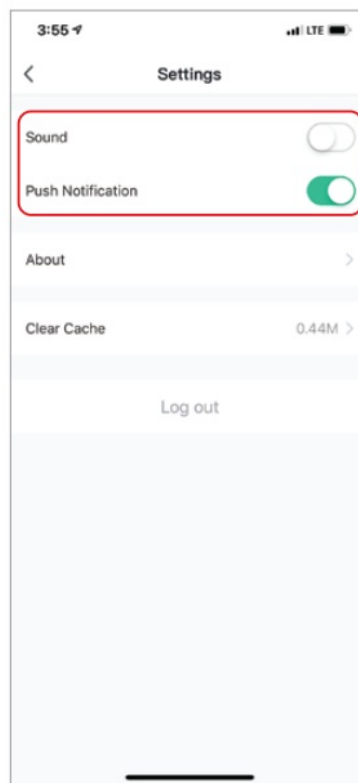
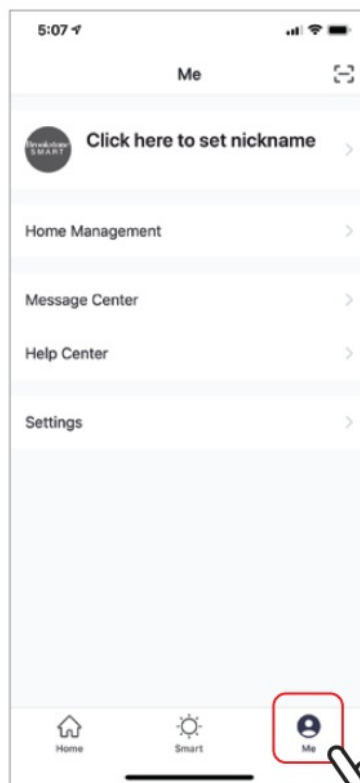


7. The connecting process will begin. Do not turn off the Wi-Fi Camera or phone while connecting. Wait for the connection process to complete.
8. Once the device has been successfully added, name the device that you would like it to be called in the app. The Wi-Fi Camera is ready for use.



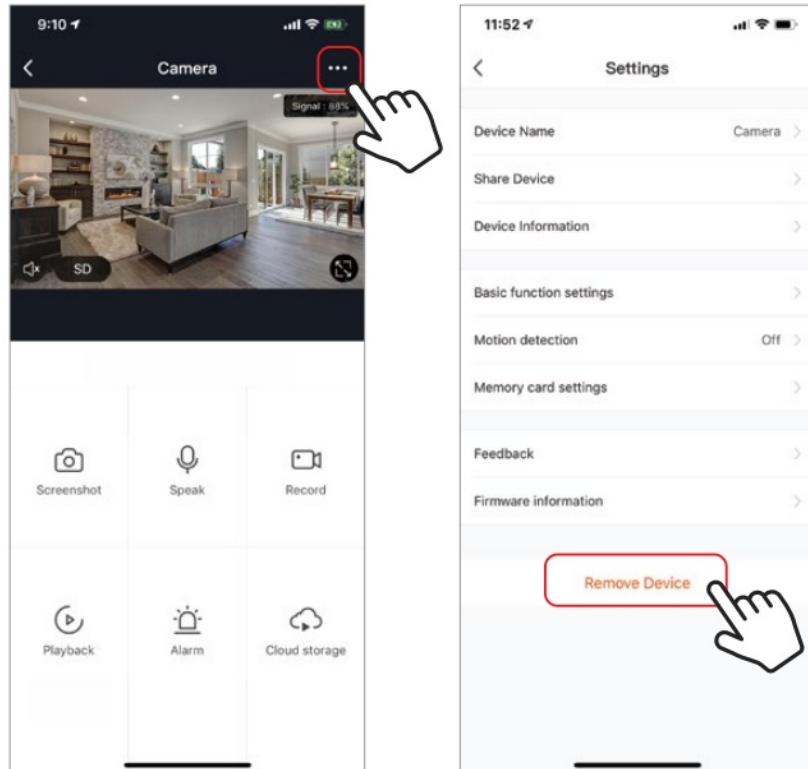
## PUSH NOTIFICATIONS

1. You can turn on/off notifications for all devices connected to app by clicking on the “Me” button at the bottom right of the screen.
2. Then click on the “Settings” button. From there you can turn on/off all notifications.



## REMOVE A DEVICE

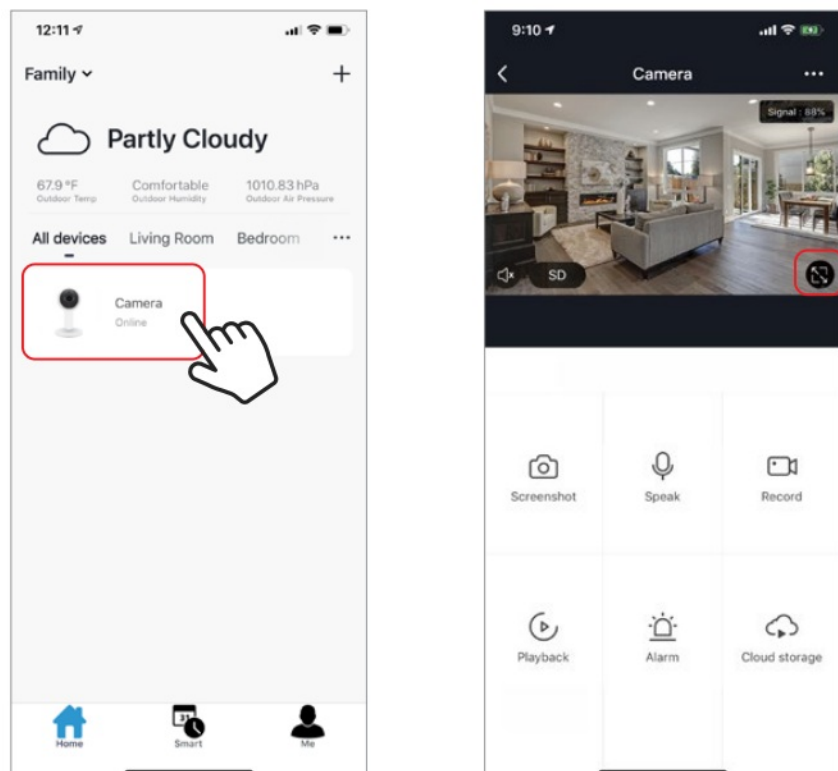
1. From the home screen, click on the device you would like to remove.
2. Then click on the edit symbol on the top right of the screen.
3. From there you would then click the “Remove Device” button at the bottom of the screen.



## APP FUNCTIONS

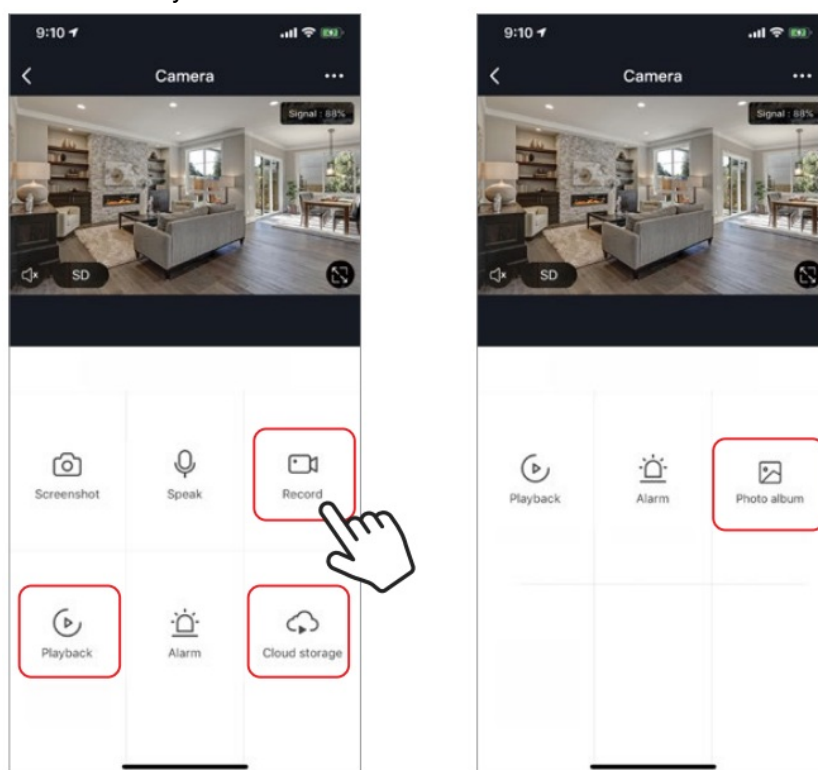
### Live Video

To view live video simply click on the device under “All devices” and you will see your live video at the top immediately. Tilt your phone sideways or hit the full-screen button in the bottom right corner of the live video to see your live footage at full screen on your phone.



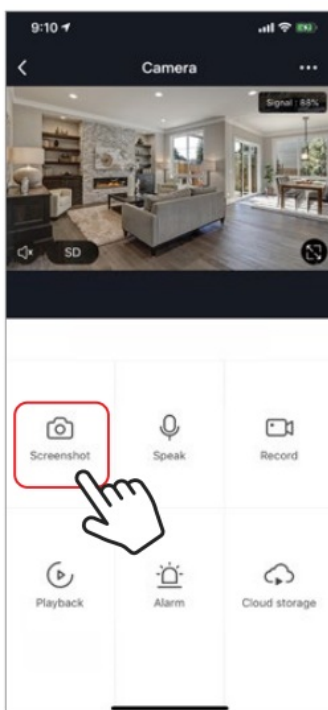
### Video Recording

To record video press the “record” button on the main camera screen. To end the recording, press the “record” button again. To view recordings, scroll down on the main camera page and press the “Photo Album” button. All of the video recordings and photos you take will be here in the photo album. To view all footage that your camera has recorded, press “Playback”. You can also purchase optional cloud storage by clicking on “Cloud Storage” if you do not have a micro SD card inserted in your camera.



### Taking a Photo

To take a photo, press “Screenshot” and the photo will be saved to your phone in the photos and video section.



### Infrared Night Vision

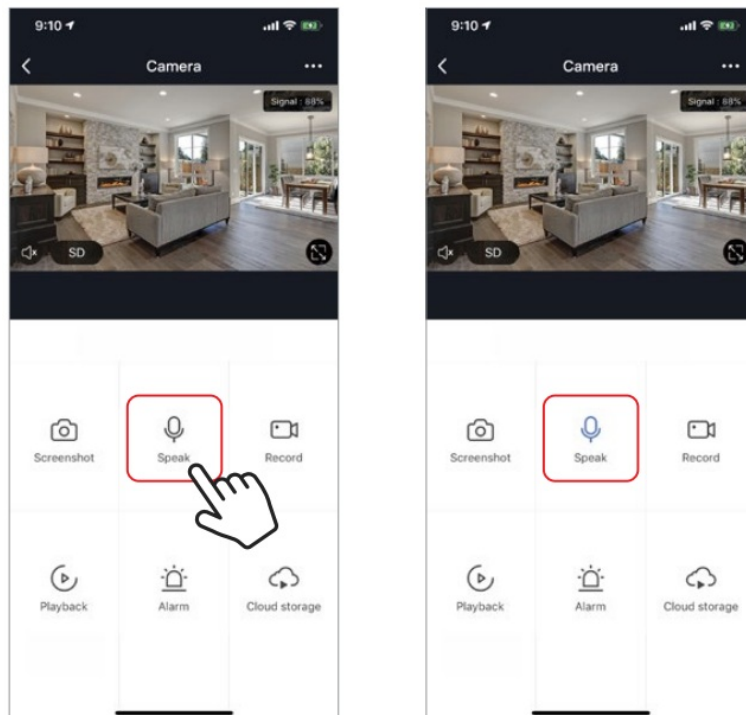
Infrared night vision is controlled by camera automatically. When the area around the camera becomes too dark, the infrared night vision will activate automatically. When the area around the camera is bright again, the night vision will deactivate automatically.

### Two Way Audio

To activate two way audio, press the “Speak” button. When the button is blue, whatever you say into your phone will come out of the speaker on the camera. You can also hear at the same time any sounds from the live video on

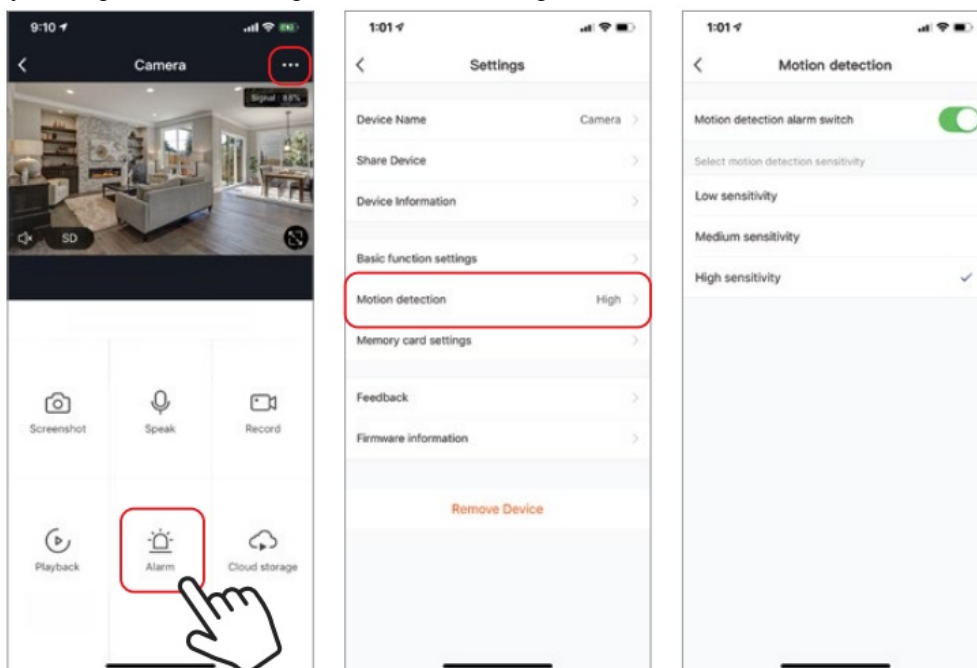


the camera.



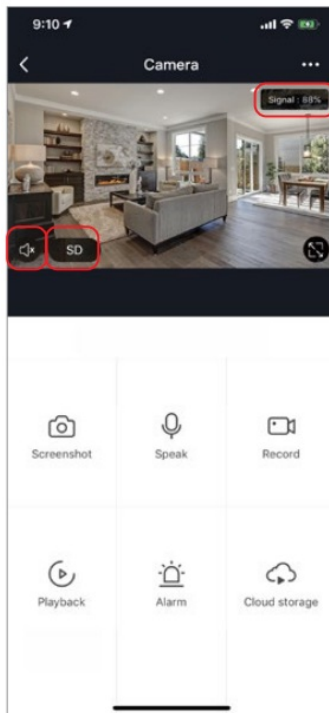
### Motion Detection

The camera uses infrared sensors when someone/something appears within its detection area. Push notifications will be sent your phone once motion is detected. To access control of motion detection press the camera setting button at the top right. On the next page you can select “motion detection”. From there you can turn it on/off and set the sensitivity setting. You can also get to this from hitting the “alarm” button on the main camera page.



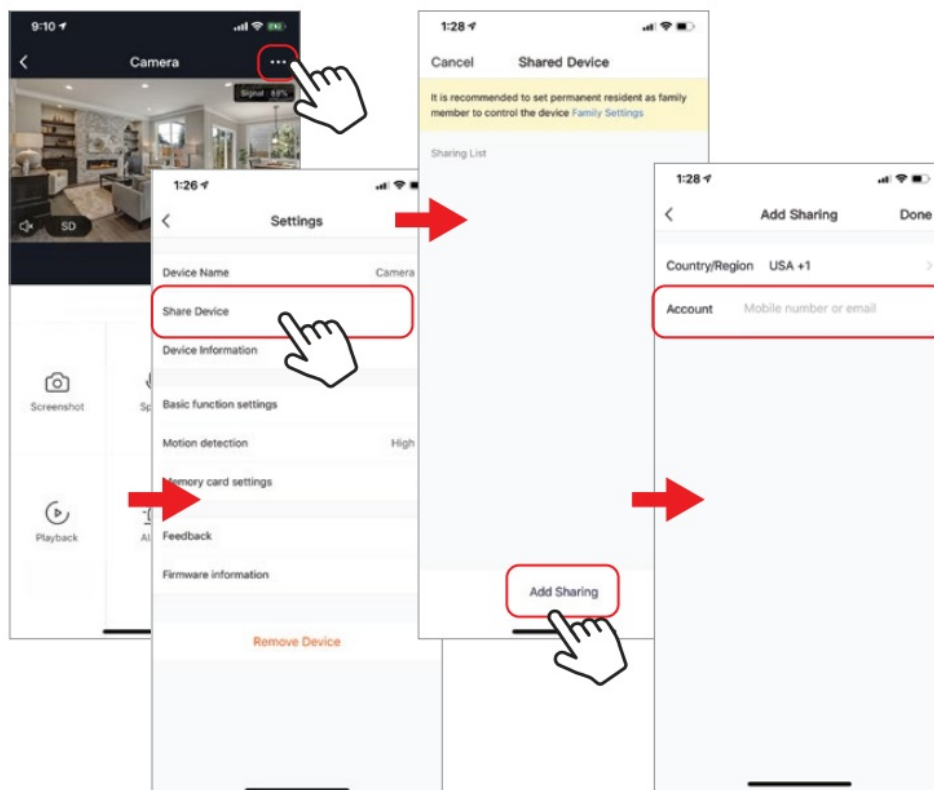
### Hub controls (sound, video quality, signal strength)

You can control features from the live video feed. There is a volume button that is used to mute and unmute the live feed. Next to that button is the video quality button and it can be used to switch between standard and high definition video. In the top right, the signal strength of the camera is shown.



## Sharing the Device

To share access to your camera with someone else's Brookstone Smart account, press the camera options button at the top right of the main camera screen. Then hit "Share Device". On the next page press "Add Sharing" at the bottom. After that, enter the email on the person's Brookstone Smart account that you would like to share the camera. They will get a notification to accept and after that the other person will have access to view your camera through the Brookstone Smart app on their phone.



## FCC Statement

This device complies with Part 15 of the FCC Rules. Operation is subject to the following two conditions:

1. this device may not cause harmful interference, and

2. this device must accept any interference received, including interference that may cause undesired operation.


**Caution:** The user is cautioned that changes or modifications not expressly approved by the party responsible for compliance could void the user's authority to operate the equipment.

**Note:** This equipment has been tested and found to comply with the limits for a Class B digital device, pursuant to part 15 of the FCC Rules. These limits are designed to provide reasonable protection against harmful interference in a residential installation. This equipment generates uses and can radiate radio frequency energy and, if not installed and used in accordance with the instructions, may cause harmful interference to radio communications. However, there is no guarantee that interference will not occur in a particular installation. If this equipment does cause harmful interference to radio or television reception, which can be determined by turning the equipment off and on, the user is encouraged to try to correct the interference by one or more of the following measures:

- Reorient or relocate the receiving antenna.
- Increase the separation between the equipment and receiver.
- Connect the equipment into an outlet on a circuit different from that to which the receiver is connected.
- Consult the dealer or an experienced radio/TV technician for help.

This equipment complies with FCC radiation exposure limits set forth for an uncontrolled environment. This equipment should be installed and operated with a minimum distance of 20cm between the radiator and any part of your body. For more products please visit [www.brookstone.com](http://www.brookstone.com)

## Documents / Resources

	<p><a href="#">Brookstone BKWIFICAM3 WiFi Plug-In Security Camera</a> [pdf] User Manual BKWIFICAM3, WiFi Plug-In Security Camera, Security Camera, BKWIFICAM3, Camera</p>
---	---

## References

- [B Massage, Personal Care & Home Essentials | Brookstone](#)